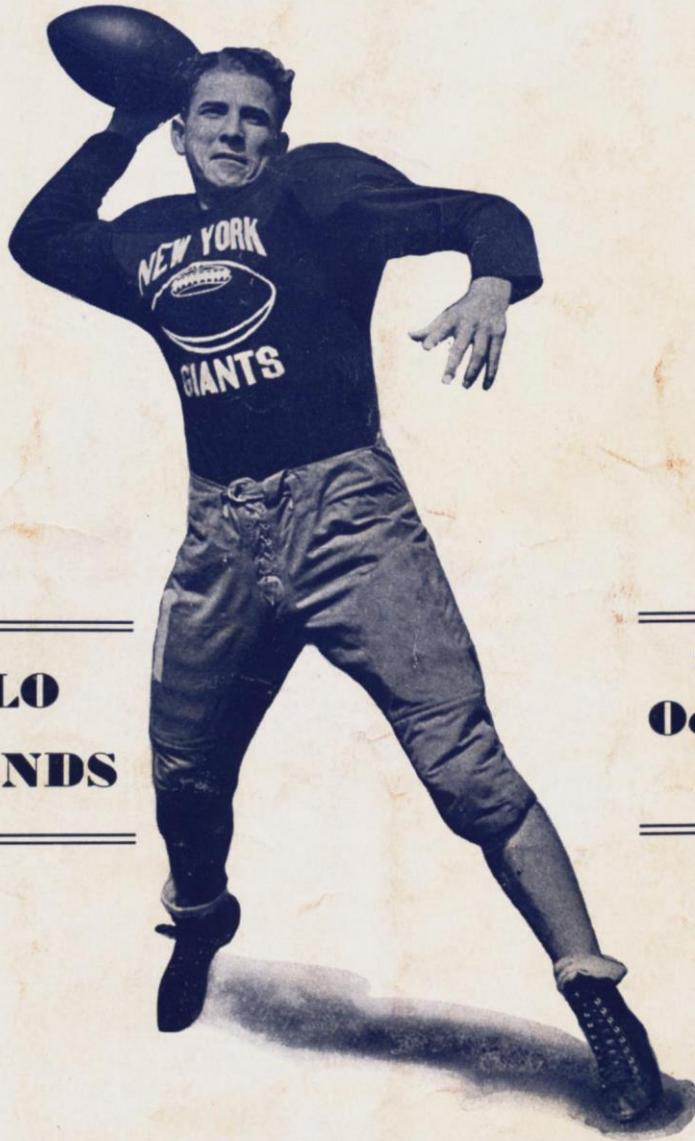


Price 10 Cents

NEW YORK GIANTS
vs.
CHICAGO BEARS



**POLO
GROUNDS**

**Sunday
October 27
1940**

EDDIE MILLER, GIANTS' SPARKPLUG

NEXT HOME GAME
SUNDAY, NOVEMBER 10, at 2:05 P.M.
CLEVELAND RAMS vs. NEW YORK GIANTS



With men who know tobacco best—it's **LUCKIES 2 to 1**

ESTABLISHED 1853

CORN EXCHANGE BANK TRUST COMPANY

HEAD OFFICE

William and Beaver Streets
NEW YORK



74 BRANCHES CONVENIENTLY LOCATED IN
GREATER NEW YORK

Member Federal Deposit Insurance Corporation

Cleveland Rams Are Next

THE New York Giants will be away from the Polo Grounds next Sunday but return to the home field on the following Sunday, November 10, to meet the resurgent Cleveland Rams, who tumbled the Green Bay Packers out of their berth at the top of the western division race last week.

The Giants next Sunday will meet the powerful Brooklyn Dodgers at Ebbets Field in the first clash with Dr. John Bain Sutherland's charges since the former Pitt mentor took over the coaching reins of the team across the river. This Ebbets Field trip has always been a tough one on the Giants and it looks especially tough this season since the Dodgers have won both their starts on the home field.

And you can bet that the Dodgers are all set for our Giants too since it has been ten lean years since the Brooklyn eleven last registered a victory over a New York eleven although there have been several deadlocks in the interborough series.

Unfortunately the Giants must also look ahead to the clash with the Rams the following week and after that in quick succession the invasion by the Green Bay Packers, Washington Redskins and the concluding tussle with the Dodgers.

It is a tough schedule facing the Giant array and the Rams look to be as tough as any team in the list right now. Coached by Dutch Clark, one of the National League's greatest quarterbacks when he played for Portsmouth and Detroit, the Rams have a high scoring array that is always dangerous.

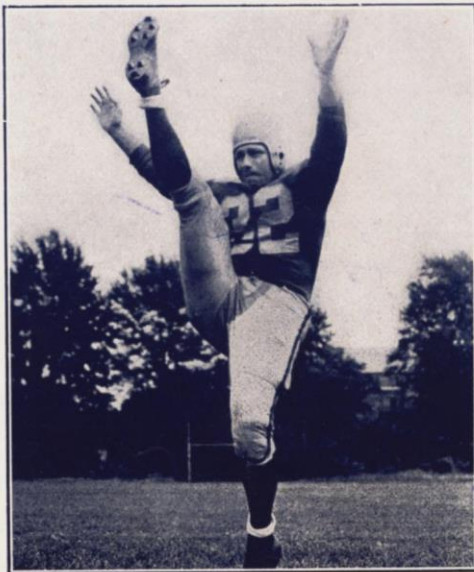
Heading the threatening Ram backfield is Parker Hall, former Mississippi All-America ace, who last fall was voted the outstanding player of professional football. Hall is showing

no signs of a letdown in the sensational play which saw him set three new national league passing records last fall when the Rams wound up the season winning five of the last six games on the schedule. It was Hall who tossed two scoring passes to defeat Green Bay last Sunday and so far this season he has completed 35 aeri-als to gain 558 yards and is right among the aerial leaders.

In addition the former Mississippi ace is within eight yards of topping Whizzer White of Detroit, Banks McFadden of Brooklyn and Tuffy Lee-

mans as the leading ground gainer of the league. Hall has picked up 238 yards, averaged 4.4 yards per try and so is just about the most dangerous triple threat the Giants have yet faced this season. Back Hall up with the sensational powerhouse Johnny Drake, former Purdue star, who is also among the top ground gainers and you have enough to know why Coach Steve Owen is really worried about the Cleveland Rams.

If you have not secured your season reserved seats and want to secure a seat for this game there will be tickets on sale today in the Exchange window at the rear of Section 16 in the lower stand. You can secure tickets for next Sunday's game at Ebbets Field from the Dodgers office, 215 Montague Street, or without extra charge at any Western Union office in greater New York.



PARKER HALL

NEW YORK GIANTS vs. CLEVELAND RAMS

Here Sunday, November 10

Tickets now on sale at Exchange window, Section 16, Lower Stand

This Book Published by HARRY M. STEVENS, Inc.
Offices: 320 Fifth Avenue
New York City

This Year . . . COME TO
SOUTHERN CALIFORNIA

For the Great

PRO-BOWL GAME

[NATIONAL LEAGUE CHAMPIONS vs. ALL STARS]

PROFESSIONAL FOOTBALL'S
ANNUAL CLASSIC

to Be Played in

LOS ANGELES

December 29, 1940

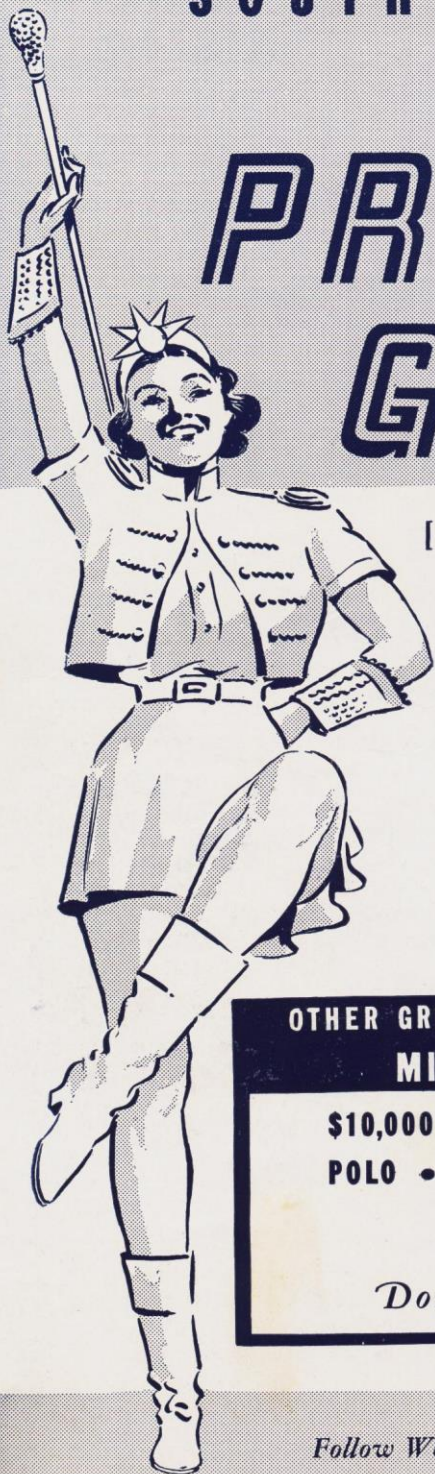
OTHER GREAT SOUTHERN CALIFORNIA
MIDWINTER EVENTS

\$10,000 OPEN GOLF TOURNAMENT
POLO • SNOW SPORTS • TENNIS
ROSE BOWL GAME

Don't Miss Them!

Follow Western Sports in . . .

LOS ANGELES TIMES
SPORTS AUTHORITY OF PACIFIC COAST



REDSKINS STILL SET PACE

Scoring in the National Football League has reached an average of 31 points a game, the highest in history, according to team statistics for the first half season released today. In five games Sunday there were 166 points tallied, an average of 37 a game, bringing the season's total in 28 contests to 868 points. Washington and Green Bay and the Chicago Bears are leading the circuit with 147, and 113. Last year the major pro leaguers tallied an average of 30 points a game for the fifty-five game schedule to set a new all-time high. A survey of 205 college teams in the country last season showed the college average to be 13 points a game.

Washington now has a clean sweep in offensive play. In addition to leading in scoring, the Redskins overtook Green Bay in ground gaining and remained the best forward passing unit. They have gained 1687 yards to 1630 for the Packers. The Bears are third with 1419 yards and Brooklyn fourth with 1341.

Sammy Baugh and Frank Filchock have completed 73 passes out of 116 thrown for a 62% efficiency average—three per cent better than a week ago. They are only two completions away from Philadelphia's 75 out of 176 tosses. Green Bay took third place in passing with 65 completions in 148 throws.

New York and Detroit share defensive honors. Detroit has allowed only 45 points in six games while the Giants are tied with the Cardinals in pass defense (only 36% completed against them) and have allowed opponents only 829 yards.

Team statistics, sixth week of play:—

| Team | EASTERN DIVISION | | | | P.C. | Pts. | Opp. Pts. |
|--------------|------------------|------|--------|------|------|------|-----------|
| | Games | Y.G. | O.Y.G. | F.P. | | | |
| Washington | (5) | 1687 | 1223 | 116 | 73 | 147 | 72 |
| New York | (5) | 1277 | 829 | 75 | 36 | 66 | 52 |
| Brooklyn | (5) | 1341 | 1339 | 82 | 35 | 85 | 60 |
| Pittsburgh | (7) | 1294 | 1806 | 137 | 40 | 40 | 107 |
| Philadelphia | (6) | 1176 | 1607 | 176 | 75 | 88 | 149 |

| Team | WESTERN DIVISION | | | | P.C. | Pts. | Opp. Pts. |
|-------------------|------------------|------|--------|------|------|------|-----------|
| | Games | Y.G. | O.Y.G. | F.P. | | | |
| Chicago Bears | (5) | 1419 | 1264 | 76 | 25 | 92 | 52 |
| Green Bay | (5) | 1630 | 1352 | 148 | 65 | 113 | 104 |
| Detroit | (6) | 1144 | 1052 | 76 | 30 | 79 | 45 |
| Cleveland | (5) | 1302 | 1372 | 123 | 50 | 75 | 85 |
| Chicago Cardinals | (7) | 1285 | 1711 | 118 | 42 | 83 | 142 |

Teams in order of league standing. (Detroit and Green Bay tied for second in Western Division). Y.G.—Yards Gained. O.Y.G.—Opponents' Yards Gained. F.P.—Forward Passes. P.C.—Passes Completed. Pts.—Points. Opp. Pts.—Opponents' Points.

NEW YORK GIANTS 1940 LEAGUE SCHEDULE

GAMES REMAINING

Sunday, Nov. 3, At Brooklyn
 Sunday, Nov. 10, Cleveland
 Sunday, Nov. 17, Green Bay
 Sunday, Nov. 24, Washington
 Sunday, Dec. 1, Brooklyn

GAMES PLAYED

Giants 10, Pittsburgh 10
 Giants 7, Washington 21
 Giants 20, Philadelphia 14
 Giants 17, Philadelphia 7
 Giants 12, Pittsburgh 0

NATIONAL FOOTBALL LEAGUE

STANDING OF THE CLUBS EASTERN DIVISION

| | W. | L. | T. | Pct. |
|---------------|----|----|----|-------|
| Washington | 5 | 0 | 0 | 1.000 |
| New York | 3 | 1 | 1 | .750 |
| *Brooklyn | 3 | 2 | 0 | .600 |
| Pittsburgh | 1 | 4 | 2 | .200 |
| *Philadelphia | 0 | 6 | 0 | .000 |

WESTERN DIVISION

| | W. | L. | T. | Pct. |
|---------------|----|----|----|------|
| Chicago Bears | 4 | 1 | 0 | .800 |
| Green Bay | 3 | 2 | 0 | .600 |
| Detroit | 3 | 2 | 1 | .600 |
| Cleveland | 2 | 3 | 0 | .400 |
| Chicago Cards | 1 | 4 | 2 | .200 |

* Not including last night's game.

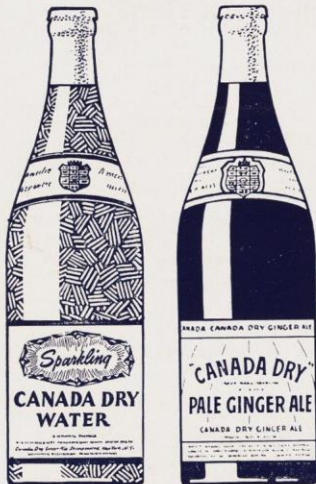
OTHER GAMES TODAY

Washington at Detroit
 Cleveland at Cardinals
 Pittsburgh-Green Bay at Milwaukee

GAMES NEXT SUNDAY

New York at Brooklyn
 Detroit at Cleveland
 Green Bay at Bears
 Pittsburgh at Washington

**"THAT'S THEIR CAPTAIN—
HE'S HOLDING OUT
FOR CANADA DRY!"**



P.S. For those long-lasting tall drinks after the game, ask for Sparkling Canada Dry Water!



The captain of this team is a smart apple.

He knows there's nothing under the sun that quenches thirst...cools...refreshes...and picks you up more pleasantly than Canada Dry—"the Champagne of Ginger Ales."

Is there any reason why you shouldn't have some, too?

Why wait till you get home? Call the vendor...or head for a refreshment stand, and enjoy this "gingervating" treat right now!

CANADA DRY "THE CHAMPAGNE OF GINGER ALES!"

**"Yep — I switched brands.
Raleighs not only taste better,
but I go for those premiums!"**



THERE'S a lad who gets his *full* money's worth out of smoking. How about you? When you switch to Raleighs you get an expert blend of not just six or a dozen kinds of tobacco, but thirty-one choice grades of the finest Turkish, Virginia and Burley crops. Each tobacco plays an important part in the flavor, body or smoothness of the final blend. Yet Raleighs cost no more than any other popular-priced brand, and come with plain ends or cork tips.

And here's the second "money's worth" feature. There's a golden coupon on the back of the pack good in the United States for cash, or even greater value in luxury premiums. Write for the premium booklet that describes all the things to save for. Brown & Williamson Tobacco Corporation, P.O. Box 599, Louisville, Kentucky.

SAVE B & W COUPONS FOR HANDSOME NEW PREMIUMS



SPORT JACKET of special lightweight poplin. Zipper front. Wind and shower proof. Small (34-36), medium (38-40), large (42-44) . . . 475 coupons



POKER SET. Solid walnut case with hand-rubbed finish. 300 quality chips (white, red, blue and yellow), two decks of Bicycle cards. 800 coupons.



NEW DELUXE DETECTO SCALE. Easy-to-read dial. Extra-large platform. Non-slip rubber mat. Dependably accurate 375 coupons.



NEW SODA-KING SIPHON. Carafe shaped. All metal. Black enamel and chrome. Quart size. 450 coupons. Box of 10 refills: 75 coup.



FREE . . . NEW CATALOG. Illustrations and descriptions of more than 70 useful and practical premiums. Write for your copy today. Edition #18.

Cuff Tops in Two Specialties

Ward Cuff, leading field goal kicker of the National Football League for the past two seasons, is back at the top of the heap in his specialty again tied for the leadership with Clarke Hinkle, Green Bay veteran, each with four three-pointers along with Armand Niccolai, Pittsburgh tackle and kicking specialist.

Cuff in addition to his field goal exploits is tied for point getting honors with three other players, all of them at 30 points. Don Looney, rookie end of the Philadelphia Eagles; Carl Mulleneaux, husky end of the Green Bay Packers; and Dick Todd, flashy running back of the Washington Redskins, have all scored 30 points. Cuff has led the Giants in scoring for the past three seasons and seems well on his way to repeat. As a matter of fact Cuff has now scored 149 points for the Giants in league competition and needs but five more to pass Dale Burnett, to take second place in the all-time scoring list.

The four field goals booted by Cuff this sea-

son have enabled the stellar wing back to pass Ken Strong as the best field goal kicker the Giants have had in sixteen years of National League competition. Cuff has booted 19 in all, or one more than Strong scored.

The race for ground gaining honors in the league is the closest in its history. There are four players within nine yards of each other at the top headed by Whizzer White of Detroit. Banks McFadden has fallen to second place with 240 yards, seven behind White. Tuffy Leemans is just a yard behind McFadden while Parker Hall of Cleveland is just another yard shy of Leemans' mark of 239 yards.

Sammy Baugh is setting an unprecedented pace in the struggle for aerial honors averaging .716 on his passes and gaining 814 yards. The Washington Redskin flinger has completed 58 of 81 passes, eight of them for touchdowns, and only had two intercepted. Davey O'Brien of Philadelphia has completed 62 but thrown 143 and gained only 629 yards.

LEADING GROUND GAINERS

| Player — Team | Yards Gained | Attempts | Average |
|----------------------------------|--------------|----------|---------|
| Whizzer White, Detroit..... | 247 | 83 | 3.0 |
| Banks McFadden, Brooklyn..... | 240 | 53 | 4.5 |
| Tuffy Leemans, New York..... | 239 | 73 | 3.2 |
| Parker Hall, Cleveland..... | 238 | 53 | 4.4 |
| Marshall Goldberg, Cards..... | 212 | 45 | 4.7 |
| Pug Manders, Brooklyn..... | 206 | 43 | 4.7 |
| Gary Famiglietti, Bears..... | 176 | 40 | 4.4 |
| Joe Maniaci, Bears..... | 167 | 39 | 4.2 |
| Clarke Hinkle, Green Bay..... | 165 | 49 | 3.3 |
| Billy Patterson, Pittsburgh..... | 165 | 63 | 2.6 |
| Howie Weiss, Detroit..... | 153 | 54 | 2.8 |
| George McAfee, Bears..... | 152 | 23 | 6.6 |
| Merlyn Condit, Pittsburgh..... | 148 | 34 | 4.3 |
| Walter Nielson, New York..... | 147 | 35 | 4.2 |
| Eddie Miller, New York..... | 147 | 46 | 3.1 |
| Johnny Drake, Cleveland..... | 145 | 44 | 3.2 |
| Hugh McCullough, Cardinals..... | 141 | 25 | 5.6 |
| Harry Clark, Bears..... | 133 | 25 | 5.3 |
| Dick Riffe, Philadelphia..... | 133 | 52 | 2.5 |
| Ray Nolting, Bears..... | 131 | 39 | 3.3 |
| Lloyd Madden, Cardinals..... | 129 | 15 | 8.6 |
| Lloyd Cardwell, Detroit..... | 125 | 30 | 4.1 |
| Dick Todd, Washington..... | 123 | 26 | 4.7 |
| Jimmy Johnston, Washington..... | 121 | 41 | 2.9 |
| George Kick, Pittsburgh..... | 120 | 38 | 3.1 |
| Lou Tomasetti, Pittsburgh..... | 119 | 32 | 3.7 |
| Mario Tonelli, Cardinals..... | 116 | 45 | 2.5 |
| Cecil Isbell, Green Bay..... | 112 | 44 | 2.5 |
| Dwight Sloan, Detroit..... | 106 | 34 | 3.1 |

LEADING FORWARD PASSERS

| Player—Team | Standing | Passes Complete | Yards | Inter-cepted | Efficiency Average |
|------------------------------|----------|-----------------|-------|--------------|--------------------|
| Sammy Baugh, Wash..... | 1 | 81 | 58 | 814 | 2 .716 |
| Cecil Isbell, Green Bay..... | 2 | 80 | 38 | 629 | 7 .475 |
| Davey O'Brien, Phil..... | 3 | 143 | 62 | 733 | 14 .433 |
| Arnie Herber, Green Bay..... | 4 | 44 | 20 | 365 | 6 .454 |
| Ace Parker, Brooklyn..... | 5 | 42 | 19 | 330 | 3 .452 |
| Parker Hall, Cleveland..... | 6 | 94 | 35 | 558 | 8 .372 |
| Frank Filechoc, Wash..... | 7 | 33 | 15 | 253 | 5 .454 |
| Whizzer White, Detroit..... | 8 | 46 | 17 | 199 | 5 .425 |
| Billy Patterson, Pitt..... | 9 | 89 | 25 | 342 | 12 .280 |
| Beryl Clark, Cards..... | 10 | 42 | 17 | 243 | 4 .404 |
| Hugh McCullough, Cards..... | 11 | 53 | 19 | 241 | 10 .358 |
| Sid Luckman, Bears..... | 12 | 42 | 16 | 331 | 6 .380 |

League standing figured by taking position by completions and position by efficiency and adding them. Baugh is first with 3 points (2 completions, 1 efficiency); Isbell 5 points (3 completions, 2 efficiency); O'Brien 7 points (1 completion, 6 efficiency).

Touchdown Passes: Baugh, 8; Isbell, 6; Herber, O'Brien, Parker, 4; Filechoc, Hall, 3; Clark, McCullough, Patterson, 2.

LEADING PASS RECEIVERS

| Player—Team | Number Caught | Yards Gained | Touch-downs |
|---------------------------------|---------------|--------------|-------------|
| Don Looney, Philadelphia..... | 29 | 419 | 4 |
| Don Huston, Green Bay..... | 22 | 369 | 3 |
| Gaynall Tinsley, Cardinals..... | 16 | 165 | 1 |
| Jimmy Johnston, Washington..... | 15 | 178 | 1 |
| Wayne Millner, Washington..... | 12 | 178 | 3 |
| Jim Benton, Cleveland..... | 12 | 203 | 1 |
| Charlie Malone, Washington..... | 11 | 130 | 0 |
| Vic Spadaccini, Cleveland..... | 10 | 110 | 1 |
| Carl Mulleneaux, Green Bay..... | 10 | 212 | 5 |

FIELD GOALS

| Player—Team | Attempted | Made | Total Yards | Longest |
|-------------------------------|-----------|------|-------------|---------|
| Clarke Hinkle, Green Bay..... | 5 | 4 | 157 | 45 |
| Ward Cuff, New York..... | 7 | 4 | 112 | 35 |
| Armand Niccolai, Pitt..... | 10 | 4 | 151 | 48 |
| Ralph Kercheval, Brook..... | 5 | 3 | 97 | 36 |

SCORING

| Player—Team | Touch. | P.A.T. | F.G. | Points |
|----------------------------------|--------|--------|------|--------|
| Ward Cuff, New York..... | 2 | 6 | 4 | 30 |
| Don Looney, Philadelphia..... | 5 | 0 | 0 | 30 |
| Carl Mulleneaux, Green Bay..... | 5 | 0 | 0 | 30 |
| Dick Todd, Washington..... | 5 | 0 | 0 | 30 |
| Don Huston, Green Bay..... | 3 | 7 | 0 | 25 |
| John Hall, Cardinals..... | 4 | 0 | 0 | 24 |
| Jimmy Johnston, Washington..... | 4 | 0 | 0 | 24 |
| Jim Masterson, Washington..... | 2 | 9 | 0 | 21 |
| Ace Parker, Brooklyn..... | 2 | 8 | 0 | 20 |
| John Drake, Cleveland..... | 3 | 1 | 0 | 19 |
| Cecil Isbell, Green Bay..... | 3 | 0 | 0 | 18 |
| Pug Manders, Brooklyn..... | 3 | 0 | 9 | 18 |
| George McAfee, Bears..... | 3 | 0 | 0 | 18 |
| Wayne Millner, Washington..... | 3 | 0 | 0 | 18 |
| Dick Riffe, Philadelphia..... | 3 | 0 | 0 | 18 |
| Bob Seymour, Washington..... | 3 | 0 | 0 | 18 |
| Howie Weiss, Detroit..... | 0 | 4 | 4 | 16 |
| Armand Niccolai, Pittsburgh..... | 0 | 3 | 4 | 15 |
| Clarke Hinkle, Green Bay..... | 0 | 3 | 0 | 15 |
| Charles Price, Detroit..... | 2 | 3 | 0 | 15 |
| Whizzer White, Detroit..... | 2 | 2 | 0 | 14 |

PROBABLE CHICAGO BEARS LINE-UP

| | | | | | | |
|------------------------------|-------------------------------|--------------------------------|------------------------|---------------------------------|-----------------------------|---------------------------|
| Plasman 14 Left End | Stydahar 13 Left Tackle | Fortmann 21 Left Guard | Turner 66 Center | Forte 23 Right Guard | Artoe 35 Right Tackle | Wilson 30 Right End |
| Luckman 42 Quarterback | | Manders 10 Left Halfback | | Nolting 25 Right Halfback | | Maniaci 11 Fullback |

T
2:30

CHICAGO BEARS FOOTBALL ROSTER

| No. | Name | Position | Weight | Height | Age | College | Yrs. Pro |
|-----|------------------|----------|--------|--------|-----|----------------------------------|-------------|
| 2 | Gary Famiglietti | H.B. | 214 | 6:00 | 25 | Boston | 3 |
| 4 | Harry Clark | H.B. | 180 | 6:00 | 22 | West Virginia | 1 |
| 5 | George McAfee | H.B. | 182 | 5:11 | 21 | Duke | 1 |
| 6 | John Siegal | E. | 205 | 6:01 | 21 | Columbia | 2 |
| 7 | Edgar Manske | E. | 185 | 6:01 | 27 | Northwestern | 4 |
| 9 | Bill Osmanski | F.B. | 197 | 5:11 | 24 | Holy Cross | 2 |
| 10 | John Manders | H.B. | 200 | 6:01 | 30 | Minnesota | 8 |
| 11 | Joseph Maniaci | F.B. | 210 | 6:01 | 26 | Fordham | 3 |
| 13 | Joseph Stydahar | T. | 230 | 6:04 | 26 | West Virginia | 5 |
| 14 | Richard Plasman | E. | 210 | 6:03 | 25 | Vanderbilt | 4 |
| 16 | George Musso | G. | 270 | 6:02 | 29 | Millikin (Decatur, Ill.) | 8 |
| 17 | Robert Snyder | Q.B. | 205 | 6:00 | 27 | Ohio U. | 2 |
| 20 | Robert Nowaskey | E. | 195 | 5:11 | 22 | George Washington | 1 |
| 21 | Daniel Fortmann | G. | 210 | 6:00 | 24 | Colgate | 5 |
| 22 | Saul Sherman | Q.B. | 190 | 6:01 | 22 | Chicago | 2 |
| 23 | Aldo Forte | G. | 212 | 6:01 | 22 | Montana | 2 |
| 24 | Frank Bausch | C. | 225 | 6:03 | 32 | Kansas | 4 |
| 25 | Ray Nolting | H.B. | 185 | 5:11 | 27 | Cincinnati | 5 |
| 26 | Albert Baisi | G. | 215 | 6:00 | 23 | West Virginia | 1 |
| 27 | Joseph Mihal | T. | 230 | 6:03 | 22 | Purdue | 1 |
| 28 | Chester Chesney | C. | 227 | 6:02 | 23 | DePaul (Chicago) | 2 |
| 29 | Edward Kolman | T. | 233 | 6:03 | 23 | Temple | 1 |
| 30 | George Wilson | E. | 190 | 6:01 | 25 | Northwestern | 4 |
| 33 | Bernie Masterson | Q.B. | 195 | 6:03 | 27 | Nebraska | 7 |
| 34 | John Torrance | T. | 285 | 6:03 | 26 | Louisiana State | 2 |
| 35 | Lee Artoe | T. | 218 | 6:02 | 22 | California | 1 |
| 42 | Sidney Luckman | Q.B. | 197 | 6:00 | 24 | Columbia | 2 |
| 48 | Robert Swisher | H.B. | 165 | 5:11 | 26 | Northwestern | 3 |
| 51 | Ken Kavanaugh | E. | 205 | 6:03 | 23 | Louisiana State | 1 |
| 57 | Ray McLean | H.B. | 168 | 5:10 | 24 | St. Anselm's (Man., N. H.) | 1 |
| 66 | Clyde Turner | C. | 235 | 6:01 | 20 | Harlin-Simmons | 1 |
| 76 | Hampton Pool | E. | 215 | 6:03 | 23 | Stanford | 1 |
| 82 | Ray Bray | G. | 224 | 6:00 | 23 | W. State Teachers (Kalamazoo) | 2 |

Auto 52 yd kick

Tickets for CLEVELAND RAMS Game

Here Sunday, November 10

Can be secured today at Exchange Window, Section 16, Lower Stand

THANKS TO PROTECTIVE BLENDING



PROBABLE NEW YORK GIANTS LINE-UP

me
P.M.

| | | | | | | |
|------------------|--------------------|------------------|----------------------|------------------|--------------------|-----------------|
| 23 Left End | 36 Left Tackle | 42 Left Guard | 7 Center | 2 Right Guard | 33 Right Tackle | 21 Right End |
| 9 Quarterback | 8 Left Halfback | 28 Fullback | 14 Right Halfback | | | |

NEW YORK GIANTS FOOTBALL ROSTER

| No. | Name | Position | Weight | Height | Age | College | Yrs. Giants | Yrs. Pro |
|------|--------------------|----------|--------|--------|-----|--------------------|-------------|----------|
| 2 | *John Dell Isola | Guard | 199 | 5:11 | 28 | Fordham | 7 | 7 |
| 4 | *Tuffy Leemans | Back | 195 | 6:00 | 27 | Geo. Washington | 5 | 5 |
| 5 | Kayo Lunday | Center | 215 | 6:03 | 27 | Arkansas | 4 | 4 |
| 6 | Al Owen | Back | 188 | 6:01 | 25 | Mercer | 2 | 3 |
| 7*** | Mel Hein (c) | Center | 223 | 6:03 | 31 | Washington State | 10 | 10 |
| 8 | Walt Nielsen | Back | 219 | 6:03 | 23 | Arizona | 2 | 1 |
| 9 | Eddie Miller | Back | 165 | 5:10 | 23 | New Mexico State | 2 | 2 |
| 10 | Len Barnum | Back | 198 | 6:01 | 27 | West Virginia Wes. | 3 | 3 |
| 12 | Kay Eakin | Back | 183 | 6:00 | 23 | Arkansas | 1 | 1 |
| 14 | Ward Cuff | Back | 185 | 6:01 | 26 | Marquette | 4 | 4 |
| 15 | Hank Soar | Back | 207 | 6:02 | 25 | Providence | 4 | 4 |
| 17 | John McLaughry | Back | 205 | 6:01 | 23 | Brown | 1 | 1 |
| 20 | Leland Shaffer | Back | 202 | 6:02 | 28 | Kansas State | 6 | 6 |
| 21 | Jim Lee Howell | End | 201 | 6:05 | 25 | Arkansas | 4 | 4 |
| 22 | Grenny Lansdell | Back | 190 | 6:00 | 22 | So. California | 1 | 1 |
| 23 | *Jim Poole | End | 217 | 6:02 | 25 | Mississippi | 4 | 4 |
| 24 | Bolo Perdue | End | 207 | 5:11 | 23 | Duke | 1 | 1 |
| 25 | Dominic Principe | Back | 198 | 6:00 | 23 | Fordham | 1 | 1 |
| 27 | Jiggs Kline | Back | 195 | 6:00 | 26 | Emporia | 2 | 3 |
| 28 | Nello Falaschi | Back | 195 | 6:00 | 26 | Santa Clara | 3 | 3 |
| 29 | Chuck Gelatka | End | 182 | 6:00 | 27 | Mississippi State | 4 | 4 |
| 31 | Max Harrison | End | 208 | 6:01 | 24 | Auburn | 1 | 2 |
| 35 | John Mellus | Tackle | 223 | 6:00 | 25 | Villanova | 3 | 3 |
| 35 | Ken Moore | Guard | 212 | 5:11 | 22 | W. Va. Wesleyan | 1 | 2 |
| 36 | Frank Cope | Tackle | 218 | 6:02 | 24 | Santa Clara | 3 | 3 |
| 39 | Doug Oldershaw | Guard | 195 | 6:01 | 25 | Santa Barbara | 2 | 2 |
| 42** | Orville Tuttle | Guard | 205 | 5:09 | 27 | Oklahoma City | 4 | 4 |
| 44 | Ed McGee | Guard | 210 | 6:02 | 24 | Temple | 1 | 1 |
| 50** | Ed Widseth | Tackle | 220 | 6:01 | 27 | Minnesota | 4 | 4 |
| 55 | Pete Cole | Guard | 223 | 5:11 | 24 | Trinity (Tex.) | 4 | 4 |
| 60 | Bill Edwards | Tackle | 218 | 6:03 | 21 | Baylor | 1 | 1 |
| 66 | Jerry Dennerlein | Tackle | 245 | 6:02 | 25 | St. Mary's | 3 | 4 |
| 69 | Cactus Face Duggan | Tackle | 235 | 6:03 | 23 | Oklahoma | 1 | 1 |

*All-League 1939
**Second All-League 1939
***All-League last seven years

Coach—Steve Owen, Phillips U.
Asst. Coach—Bo Molenda, Michigan

Average age—25
Average weight line—212
Average weight backs—196

OFFICIALS

Referee—William Halloran
Umpire—Tom Thorp

Head Linesman—Larry Conover
Field Judge—E. E. Miller

Here Sunday, November 10

NEW YORK GANTS vs. CLEVELAND RAMS

Tickets now on sale—New York Giants, 11 West 42nd Street

It TASTES BETTER ALL-WAYS

BLENDED WHISKEY—90 PROOF—65% GRAIN NEUTRAL SPIRITS CALVERT DISTILLERS CORP., N. Y.

GOOD COMPANY ALONE
—AND A MIGHTY
GOOD MIXER!

DRINK

Vanti
SPARKLING!

Reg. U. S. Pat. Off.

PA·PI·A

Contains **NATURAL** Vitamin A
and a **NATURAL** Digestive Aid

**ON SALE
HERE!**



NATIONAL'S
EAGLE

BLENDED WHISKEY

scores in every
drink you serve!



If you want a perfect, mild, gentle whiskey, we ask you to try National's EAGLE. And we ask you to compare its price, its body, its aroma, and its taste with *any* blend at *any* price.

90 Proof. 60%
grain neutral
spirits. National
Distillers Products
Corp., New York.

Miller and Nielsen Climbing

Eddie Miller and Walt "Horse" Nielsen, tailbacks of the starting New York Giants backfield, have been setting a fast pace in their recent games and strangely enough have each gained exactly the same yardage in rushing the ball. Miller and Nielsen with 147 yards are second to Tuffy Leemans among the Giants ground gainers.

Miller is top passer for the Giants with a 50% average completing 14 in 28 attempted aeriels for 246 yards, two of them for touchdowns. Eddie also has credit for two of the eleven passes the giants have intercepted this season.

Ward Cuff tops several departments. The stellar wingback has caught seven passes to gain 116 yards tops in that specialty. His four field goals make him the best place kicker of the squad and his 30 points is best point-getting effort among the Giants.

| BALL CARRYING | | | |
|---------------|-------|----------|--|
| Player | Yards | Attempts | |
| Leemans | 239 | 73 | |
| Miller | 147 | 46 | |
| Nielsen | 147 | 35 | |
| Cuff | 68 | 9 | |
| Barnum | 54 | 18 | |
| Soar | 20 | 8 | |
| Eakin | 18 | 8 | |
| Shaffer | 16 | 5 | |
| Owen | 10 | 2 | |
| Lansdell | 9 | 7 | |
| Principe | 8 | 9 | |
| Total | 736 | 220 | |

| FORWARD PASSING | | | | |
|-----------------|--------|----------|-------|-------------|
| Player | Passes | Complete | Yards | Intercepted |
| Miller | 28 | 14 | 246 | 2 |
| Leemans | 25 | 13 | 145 | 2 |
| Eakin | 12 | 4 | 94 | 1 |
| Barnum | 7 | 2 | 33 | 0 |
| Lansdell | 3 | 2 | 23 | 0 |
| | 75 | 35 | 541 | 5 |

Touchdown Passes: Leemans to Shaffer (1), to Poole (1), Miller to Poole (1), to Cuff (1).

| PASS RECEIVING | | | | | |
|----------------|--------|-------|-----------|--------|-------|
| Player | Caught | Yards | Player | Caught | Yards |
| Cuff | 7 | 116 | Nielsen | 1 | 18 |
| Shaffer | 7 | 58 | Barnum | 1 | 15 |
| Gelatka | 5 | 54 | Soar | 1 | 7 |
| Harrison | 3 | 90 | Owen | 1 | 5 |
| Howell | 3 | 81 | McLaughry | 1 | 1 |
| Poole | 3 | 70 | | | |
| Perdue | 2 | 28 | Total | 35 | 541 |

| PASSES INTERCEPTED BY | | | | | |
|-----------------------|------|-------|----------|------|-------|
| Player | Int. | Yards | Player | Int. | Yards |
| Oldershaw | 3 | 30 | Cuff | 1 | 15 |
| Shaffer | 2 | 14 | Principe | 1 | 12 |
| Miller | 2 | 5 | | | |
| Soar | 1 | 22 | Total | 11 | 114 |
| Dell Isola | 1 | 16 | | | |

| PUNTING | | | |
|---------|-------|---------|---------|
| Player | Kicks | Average | Longest |
| Miller | 9 | 39 | 52 |
| Barnum | 8 | 41 | 60 |
| Eakin | 8 | 40 | 52 |
| Nielsen | 1 | 42 | 42 |
| Total | 26 | 40 | 60 |

| FIELD GOALS | | |
|-------------|-----------------|----------------------|
| Player | Attempts | Yards |
| Cuff | 4 in 7 attempts | 30, 24, 35, 23 yards |
| Barnum | 1 in 1 attempt | 32 yards |
| Soar | 0 in 1 attempt | |

5 in 9 attempts—Longest 35 yards

| SCORING | | | | |
|--------------------------------|--------|--------|------|--------|
| Player | Touch. | P.A.T. | F.G. | Points |
| Cuff | 2 | 6 | 4 | 30 |
| Poole | 2 | 0 | 0 | 12 |
| Shaffer | 2 | 0 | 0 | 12 |
| Barnum | 0 | 1 | 1 | 4 |
| Miller | 1 | 0 | 0 | 6 |
| Safety vs. Pittsburgh, Oct. 20 | | | | 2 |
| Total | 7 | 7 | 5 | 66 |

Bears in Close Race

Five Chicago Bears backs are over the 100-yard mark in ground gaining and all are within striking distance of the top in the league race. There are only 24 yards separating the top three, Gary Famiglietti, Joe Maniaci and George McAfee, all over the 150-yard mark in five games.

Sid Luckman, former Columbia ace, is the best passer so far with 16 completed in 42 attempts for 331 yards. Ken Kavanaugh, former L.S.U. pass snatcher, tops the receivers with six catches good for 126 yards.

George McAfee, sensational rookie from Duke, has an exceptional punting average, having punted ten times for an average of 65 yards from the line of scrimmage, even better than Luckman's average of 53 yards. McAfee is also the top scorer of the visiting team today with three touchdowns for 18 points. Nine Bear players have scored touchdowns so far this season, showing the balance and versatility of the Bear attack.

| BALL CARRYING | | | |
|---------------|-------|----------|--|
| Player | Yards | Attempts | |
| Famiglietti | 176 | 40 | |
| Maniaci | 167 | 39 | |
| McAfee | 152 | 23 | |
| Clark | 133 | 25 | |
| Nolting | 131 | 22 | |
| Osmanski | 98 | 29 | |
| Sherman | 24 | 5 | |
| Swisler | 19 | 6 | |
| Manders | 14 | 5 | |
| Masterson | 3 | 8 | |
| Luckman | 3 | 8 | |
| Snyder | 2 | 1 | |
| McLean | 1 | 3 | |
| Totals | 923 | 214 | |

| FORWARD PASSING | | | | |
|-----------------|--------|----------|-------|-------------|
| Player | Passes | Complete | Yards | Intercepted |
| Luckman | 42 | 16 | 331 | 6 |
| Masterson | 13 | 4 | 52 | 2 |
| Snyder | 9 | 2 | 52 | 0 |
| McAfee | 5 | 1 | 8 | 0 |
| Sherman | 3 | 1 | 15 | 0 |
| Nolting | 1 | 1 | 38 | 0 |
| Clark | 3 | 0 | 0 | 2 |
| Totals | 76 | 25 | 496 | 10 |

Touchdown Passes: McAfee to Kavanaugh (1), Snyder to Kavanaugh (1), Sherman to Wilson (1).

| PASS RECEIVING | | | | | |
|----------------|--------|-------|----------|--------|-------|
| Player | Caught | Yards | Player | Caught | Yards |
| Kavanaugh | 6 | 126 | Nolting | 2 | 30 |
| Manse | 4 | 63 | Wilson | 1 | 15 |
| Plasman | 3 | 62 | Osmanski | 1 | 13 |
| McAfee | 3 | 39 | Maniaci | 1 | 5 |
| Swisler | 2 | 106 | | | |
| Clark | 2 | 47 | Totals | 25 | 496 |

| FIELD GOALS | | |
|-------------|-----------------|--------------------------|
| Player | Attempts | Yards |
| Snyder | 1 in 2 attempts | 47 yards |
| Manders | 0 in 1 attempt | |
| | | 1 in 3 attempts—47 yards |

| PASSES INTERCEPTED BY | | | | | |
|-----------------------|------|-------|----------|------|-------|
| Player | Int. | Yards | Player | Int. | Yards |
| Clark | 3 | 37 | Fortmann | 1 | 7 |
| Maniaci | 2 | 38 | McLean | 1 | 5 |
| Luckman | 2 | 15 | Sherman | 1 | 0 |
| Nolting | 1 | 15 | | | |
| McAfee | 1 | 12 | Totals | 13 | 138 |
| Turner | 1 | 9 | | | |

| PUNTING | | | |
|---------|-------|---------|---------|
| Player | Kicks | Average | Longest |
| McAfee | 10 | 45 | 65 |
| Luckman | 9 | 43 | 53 |
| Nolting | 2 | 34 | 38 |
| Clark | 1 | 30 | 30 |
| Totals | 22 | 38 | 65 |

| SCORING | | | | |
|-------------|--------|--------|------|--------|
| Player | Touch. | P.A.T. | F.G. | Points |
| McAfee | 3 | 0 | 0 | 18 |
| Kavanaugh | 2 | 0 | 0 | 12 |
| Osmanski | 2 | 0 | 0 | 12 |
| Clark | 1 | 0 | 0 | 6 |
| Famiglietti | 1 | 0 | 0 | 6 |
| Manders | 0 | 6 | 0 | 6 |
| Maniaci | 1 | 0 | 0 | 6 |
| Masterson | 1 | 0 | 0 | 6 |
| Nolting | 1 | 0 | 0 | 6 |
| Wilson | 1 | 0 | 0 | 6 |
| Snyder | 0 | 2 | 1 | 5 |
| Plasman | 0 | 2 | 0 | 2 |
| Artoe | 0 | 1 | 0 | 1 |
| Total | 13 | 11 | 1 | 92 |

Missed points after touchdowns—Maniaci, Manders.

THE GIANTS ON PARADE

The New York Giants band of 50 pieces under the direction of Russell Wooding will parade between the halves today to the music of a special swing march written by its director.

The words for this march dedicated to the Giants football team are printed here so that you can join with the band in singing.

Giants on Parade

Words by Russell Wooding,
Director New York Giants band.

Football on parade—
The GIANTS—the GIANTS
The NEW YORK GIANTS
History they've made—
The GIANTS—the GIANTS,
The NEW YORK GIANTS:
They've got a winning spirit
They play the game for all that's in it
Never be dismayed,
Whene'er the GIANTS are on parade.

Cheers with Music

Rah rah—rah rah rah
Rah rah—sis boom bah
Pass deep
Kick high
Run hard
Tackle low—rah rah rah rah rah.

The Official Watch

for the
**NATIONAL PROFESSIONAL
FOOTBALL LEAGUE**

Longines

THE WORLD'S MOST HONORED WATCH

All games of the National Professional Football League are officially timed with Longines Watches. Longines is also official football timing watch for 120 leading colleges. As official watch for 104 national and international sports and contest associations Longines Watches timed the major amateur and professional sports events and contests of 1940. Longines jewelers show fully-jeweled Longines Watches from \$40 upward; also Wittnauer Watches from \$24.75—products of Longines-Wittnauer Watch Co., Inc., 580 Fifth Avenue, New York, N. Y.

NEXT GAME HERE

Sunday, November 10

Kickoff at 2:05 P.M.

NEW YORK GIANTS

vs.

CLEVELAND RAMS

*Secure Reserved Seats Today — Exchange
Window — Section 16, Lower Stand*

*New York Football Giants Box Office
Room 1740, 11 West 42nd Street*

Difference in Rules Between Professional and Collegiate Football

The National Football League Rules Committee has made several changes in the rules for 1940, the most important of which reduces the penalty for clipping from 25 yards to 15 yards. Another important change prevents a team, incurring a penalty, from being penalized more than half the distance to the goal when the penalty is enforced in the field of play.

In professional football, the goal posts are on the goal lines; in collegiate, ten yards back of the goals on the end lines.

In professional football, passes may be thrown from any point behind the line of scrimmage. In collegiate football, they must be thrown from any point at least five yards behind the line of scrimmage.

Professional football does not recognize the "dead ball" rule. In collegiate football if any portion of the ball-carrier's body, excepting his hands or feet, touches the ground the ball is dead at that point. This is not so in professional football.

In professional football the defensive team may recover and advance the ball on fumbles, except where a backward pass has been attempted, or a punt is being received.

Flying blocks and flying tackles are permitted in the professional game.

Professional substitute players may communicate with their team mates immediately upon entering the game. College players must wait one play before communicating.

In professional football no penalty can be more than half the distance to the goal, instead of to the one-yard line.

In professional football defensive players are permitted wider latitude in the use of open hands on opposing players' necks and head without penalty. This rule prohibits striking but does allow the use of hands to force offensive blockers off balance.

In professional football a team is allowed to substitute in the fourth quarter only at the most three players who have previously played in the same quarter. This is not allowed under college rules.

The THORP "Duke"

Official

NATIONAL LEAGUE FOOTBALL

•

*** THORP
SPORTING GOODS, Inc.**

452 Fifth Ave., New York

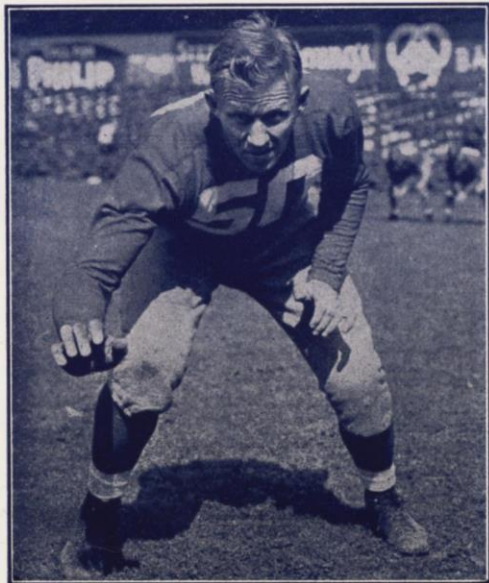
•

**This famous name in Football is now a famous name in
FOOTBALL EQUIPMENT!*

STALWART GIANT TACKLES



FRANK COPE



ED WIDSETH

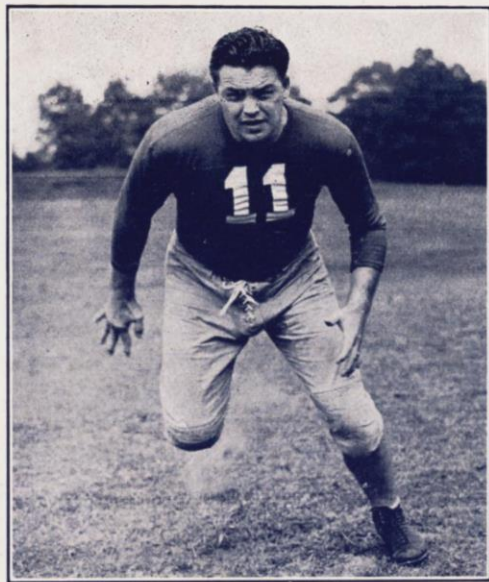
HERE SUNDAY, NOVEMBER 10

CLEVELAND RAMS vs. NEW YORK GIANTS

Tickets now on sale at Giants Office, 11 West 42nd Street



JOHN MELLUS



JERRY DENNERLEIN

*Here's
how...*

1940 FOOTBALL LOOKS TO Ted Husing...



The coach who fails to develop wide open football this year will wonder why he gets the bumps. The fans, the players, and the game demand it wide open.

Georgia Tech revealed the success of hocus-pocus spins and reverses. Harvard spotlighted faking from the fullback position. Minnesota has an amazing single wing with a jackrabbit wingback. Southern California pulverizes from cutbacks and delayed bucks. The Rockne basic shift and drive have been converted into lightning thrusts at the line, short swift passes and thrilling cuts-in-and-out.

Keep your eyes open. Watch for "basketball" football in 1940 and more thrills than the game has ever packed!



Thank you, Ted Husing! You know the game as few men know it because you live with it. But we who get our joy from watching it know our whiskey! We know Seagram's 5 Crown. It's our after-the-game favorite every time! **HERE'S HOW!**



*Here's
how...*

**TO BE SURE OF
YOUR WHISKEY**



BE SURE it's milder and more flavorful... a blend of quality with authority.



Be sure **OF THE BLEND** that gives you smoothness straight and in every drink, bar none.



Be sure of the blend **THAT BLENDS** with your own good taste and your own good ideas.



SAY: "HERE'S HOW!" before every drink and have just cause to mean it.



Say **SEAGRAM'S 5 CROWN** and be sure of satisfaction every time!

*Here's
how...*

**SAY
SEAGRAM'S
AND BE
SURE**

Seagram's 5 Crown

THE BLENDED WHISKEY FOR EVERY DRINK

72½% neutral spirits distilled from grain. 90 proof. Seagram-Distillers Corp., N. Y.

EXTRA MILDNESS



EXTRA FLAVOR



EXTRA COOLNESS



Copyright, 1940, R. J. Reynolds Tobacco Company, Winston-Salem, North Carolina

WITH

SLOWER-BURNING

Camels



In recent laboratory tests, CAMELS burned 25% *slower* than the average of the 15 other of the largest-selling brands tested—*slower* than *any* of them. That means, on the average, a smoking *plus* equal to

FAST BURNING
— creates hot flat taste in smoke... ruins delicate flavor, aroma...

SLOW BURNING— protects natural qualities that mean *mildness, thrilling taste, fragrance...* a cooler smoke...



5 EXTRA SMOKES PER PACK!