

Price 10 cents

BROOKLYN DODGERS
• VS •
BOSTON REDSKINS



JOHN SIMMS "Shipwreck" KELLY
Brooklyn Dodgers

EBBETS FIELD
Sunday, September 30, 1934

FOOTBALL

EBBETS FIELD

SUNDAY, OCTOBER 7TH

BROOKLYN DODGERS

vs.

CHICAGO BEARS

WORLD CHAMPIONS

Secure Desirable Seats in Advance

at

BROOKLYN DODGERS OFFICE

Brooklyn Eagle Building ∴ 305 Washington Street, Brooklyn, N. Y.



Canada Dry presents for your enjoyment of good living:

•• CANADA DRY GINGER ALE

CANADA DRY'S SPARKLING WATER

CANADA DRY'S LEMON-LIME RICKEY

•• HUPFEL'S BEER ••

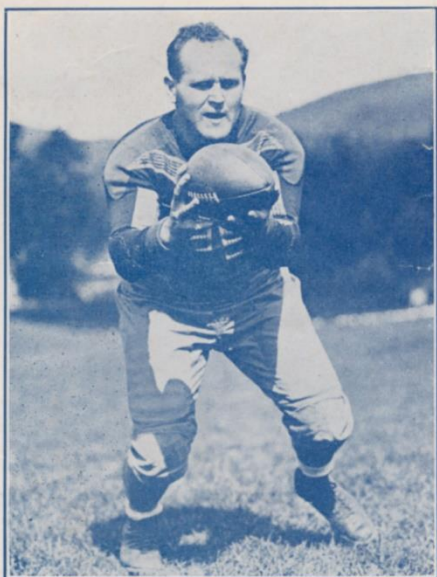
OFFICIAL PROGRAM



STUART WORDEN
Brooklyn Dodgers



BRUCE JONES
Brooklyn Dodgers



JOHN KARCIO
Brooklyn Dodgers



HERMAN HICKMAN
Brooklyn Dodgers

PROBABLE STARTING LINE-UP BROOKLYN DODGERS

TIME OF GAME 2:15 P. M.

Left End Stramiello 30	Left Tackle Engebretson 15	Left Guard Worden 4	Center Morrison 3	Right Guard Hickman 1	Right Tackle Ely 2	Right End Riblett 20
Quarter Back Montgomery 33						
Left Halfback Kelly 44		Fullback Karcis 66			Right Halfback Kercheval 22	

BROOKLYN FOOTBALL DODGERS

Player Roster—1934

No.	Name	Position	Weight	Height	College
1	HICKMAN, HERMAN	Guard	250	5:10	Tennessee
2	ELY, HAROLD	Tackle	260	6:02	Iowa
3	MORRISON, MAYNARD (DOC)	Center	210	5:10	Michigan
4	WORDEN, STEWART	Guard	210	6:01	Hampton Sydney
5	BOWDOIN, JAMES	Guard	215	6:01½	Alabama
6	*FLECKENSTEIN, WILLIAM	Tackle	225	6:02	Iowa
7	LUBRATOVICH, MILO	Tackle	208	6:02	Wisconsin
8	JONES, BRUCE	Guard	215	6:02	Alabama
9	*SCHEUER, ABRAHAM (BABE)	Tackle	240	6:03	N. Y. U.
12	CAGLE, CHRIS (RED)	Back	177	5:11	West Point
15	*ENGEBRETSON, PAUL (TINY)	Tackle	230	6:11	North Western
20	RIBLETT, PAUL	End	182	5:11	Pennsylvania
22	*KERCHEVAL, RALPH	Back	195	6:01¾	Kentucky
30	*STRAMIELLO, MIKE	End	207	6:01	Colgate
33	*MONTGOMERY, CLIFF	Back	164	5:09	Columbia
40	NASH, TOM	End	195	6:03	Georgia
44	KELLY, JOHN (SHIPWRECK)	Back	195	6:02	Kentucky
50	*HUGRET, JOE (SUGAR)	End	195	6:02	N. Y. U.
55	THOMASON, STUMPY	Back	195	5:07	Georgia Tech.
66	KARCIS, JOHN	Back	235	5:10	Carnegie Tech.
77	SANSEN, OLIVER (OLLIE)	Back	195	6:01	Iowa
99	FISHEL, DICK	Back	195	5:10	Syracuse
..	*PETERSON, PHIL	End	195	5:11
..	*ROVINSKY, ANTHONY (TONY)	Back	190	5:09	Holy Cross
..	*SIANO, TONY	Center	172	5:08	Fordham
88	*GROSSMAN, JACK	Back	195	6:02	Rutgers

*Denotes new players with Dodgers.

Coach—Capt. John J. McEwan, West Point.

Trainer—Phil Rafferty.

1933 Record—Won, 5; Lost, 4; Tied, 1.

Runner-up in Eastern Division.

THE OFFICIALS

Referee—TOM THORP

Umpire—JOHN HENNESSEY

Head Linesman—JOHN REARDON

Field Judge—FRANK "BUCK" O'NEILL



who said SPALDING only majored in Athletic Goods?

If you've only thought of Spalding for Athletic Equipment . . . stop in and look over one of the most interesting shops for men you've ever seen. Leather Jackets, shirts, suits, topcoats and all the other necessary accessories.

A. G. Spalding & Bros.

105 NASSAU STREET
518 FIFTH AVENUE

PROBABLE STARTING LINE-UP BOSTON REDSKINS

Left End Malone 19	Left Tackle Edwards 17	Left Guard Walton 29	Center Bausch 24	Right Guard Olsson 21	Right Tackle Boswell 33	Right End Collins 32
Quarter Back Hokuf 26						
Left Halfback Battles 20		Fullback Wycoff 25			Right Halfback Pinckert 11	

BOSTON REDSKINS ROSTER—1934

No.	Name	Position	Weight	Height	College
11	PINCKERT, ERNY	Back	210	6:00	So. California
13	WRIGHT, TED	Back	185	6:00	Denton Teachers
15	ELLSTROM, MARVIN	Back	215	6:00	Oklahoma City
16	JOHNSON, LARRY	Center	220	6:04	Haskell
17	EDWARDS, GLEN	Tackle	260	6:02	Washington State
19	MALONE, CHARLIE	End	200	6:04	Texas
20	BATTLES, CLIFF	Back	190	6:01	W. Va. Wesleyan
21	OLSSON, LESTER	Guard	220	6:00	Mercer
22	O'BRIEN, GAIL	Tackle	218	6:00	Nebraska
23	CROW, ORIEN	Center	225	6:02	Haskell
24	BAUSCH, FRANK	Center	218	6:02½	Kansas
25	WYCOFF, DOUG	Back	215	6:00	Georgia Tech.
26	HOKUF, STEVE	End	200	6:00	Nebraska
28	CONCANNON, ERNIE	Guard	210	6:00	N. Y. U.
35	ARENZ, ARNIE	Back	215	6:02	St. Louis
31	RENTNER, PUG	Back	190	6:01	Northwestern
32	COLLINS, PAUL	End	200	6:00	Univ. of Pitt
33	BOSWELL, BEN	Tackle	235	6:00	Texas Christian
34	SINKO, STEVE	Tackle	230	6:02½	Duquesne
29	WALTON, FRANK	Guard	220	5:11	Univ. of Pitt
37	INTRIERI, MARNE	Guard	215	5:08½	Loyola
..	McPHAIL, HAROLD	Back	220	6:01	West Point
30	TOSI, FLAVIO	End	185	6:00	Boston College
..	SORBOE, PHIL	Back	175	5:11	Washington State
..	McNAMARA, BOB	End	190	6:00	N. Y. U.

Veterans—Edwards, Crow, Battles, Pinckert, Johnson, Hokuf, Collins, Intrieri.

SPALDING has some bright additions for your tie holder

If you can't find any neckties you like . . . before you start growing a long beard, stop into Spalding's. You'll find ties for every occasion. Gay ones, sober ones, striped, solid colors and in a variety of materials.

105 NASSAU STREET
518 FIFTH AVENUE

A. G. Spalding & Bros.



Summary of the More Important Penalties

1	Offside, both sides.....	No penalty
2	Offside.....	5 yards
3	Holding, etc., by defensive side.....	5 yards
4	Man in motion—no shift.....	5 yards
5	Crawling.....	5 yards
6	Taking out time more than three times during half.....	5 yards
7	Running into kicker.....	5 yards
8	Substitute failing to report.....	5 yards
9	Unreasonable delay in putting ball in play.....	5 yards
10	Starting forward before ball.....	5 yards
11	Fair catch, taking more than two steps.....	5 yards
12	Attempt to draw opponents offside.....	5 yards
13	Interference with opponents before ball in play.....	5 yards
14	Using flying block or flying tackle.....	5 yards
15	Neutral zone, encroachment on.....	5 yards
16	Player out of bounds.....	5 yards
17	Illegal use of hands and arms by offense.....	15 yards
18	Interference with fair catch, etc.....	15 yards
19	Roughing kickers.....	15 yards
20	Substitute communicating before first play.....	15 yards
21	Unnecessary roughness.....	15 yards
22	Pushing, pulling, interlocked interference, etc.....	15 yards
23	Intentional throwing forward pass to ground.....	15 yards
24	Leaving field during one minute intermission.....	15 yards
25	Man going on field without permission.....	15 yards
26	More than one non-playing man going on field.....	15 yards
27	Coaching from sidelines.....	15 yards
28	Hurdling, tripping, piling up.....	15 yards
29	Unsportsmanlike conduct.....	15 yards
30	Defense striking on head, neck or face with palm of hand.....	15 yards
31	Man in motion on shift.....	15 yards
32	Interference on forward by passing team.....	15 yards
33	Illegal striking with hands, kneeling or kicking.....	Disqualification and loss of one-half distance to goal
34	Illegal substitution.....	25 yards and suspension
35	Clipping from behind.....	25 yards
36	Delay in starting game or second half.....	25 yards
37	Interference on forward by defense.....	1st down at spot of foul
38	Forward pass touched by ineligible player.....	Loss of ball
39	Kicking team illegally touch ball.....	Loss of ball
40	Slugging.....	Half distance to goal and disqualification
41	Forward pass from less than 5 yards back.....	Loss of down
42	Penalty declined.....	

The National Football League Revised Rules Season 1934

In all instances other than in the exceptions noted herein the rules of the National Intercollegiate Athletic Association, including changes made for 1934, are to be followed:

KICK-OFF AND FREE KICK

1. The receiving team may line in any position beyond the ten yard restraining line.

2. It is permissible for the kicking team to use a natural tee made from the soil in the immediate vicinity of the point of kick-off.

OFF-SIDE PLAYS

On all off-side plays committed within the ten yard line by the defensive team, the penalty shall be one-half the distance to the goal instead of five yards.

PLAYER ENTERING THE GAME

A player entering the game shall be permitted to communicate with his teammates immediately, instead of waiting until one play has been completed.

FLYING BLOCK AND TACKLE

The flying block and flying tackle are permitted.

FORWARD PASS

1. The passer may pass the ball from any point behind the line of scrimmage.

2. A forward pass made hand-to-hand back of the line of scrimmage, which becomes incomplete, is to be ruled a fumble.

TIME OUT

Officials must notify the COACH of each team when time has been out three (3) times—and no penalty is to be imposed for additional time out unless such notice has been given.

DEAD BALL

In Rule 7—Section 7—Article (1a) of the Intercollegiate rules omit the words "when any portion of his person except his hands or feet touches the ground."

PERSONAL FOULS

Use of hands—In Rule 10—Section 2—Article 1—Item 2 of the Intercollegiate Rules, omit the words "players on defense may not strike the opponent on the head, neck, or face with the palms of their hands".

CLIPPING

The penalty for clipping shall be 25 yards—officials shall enforce this rule to the letter.

GOAL POSTS

The goal posts shall be placed on the goal-line instead of ten yards beyond.

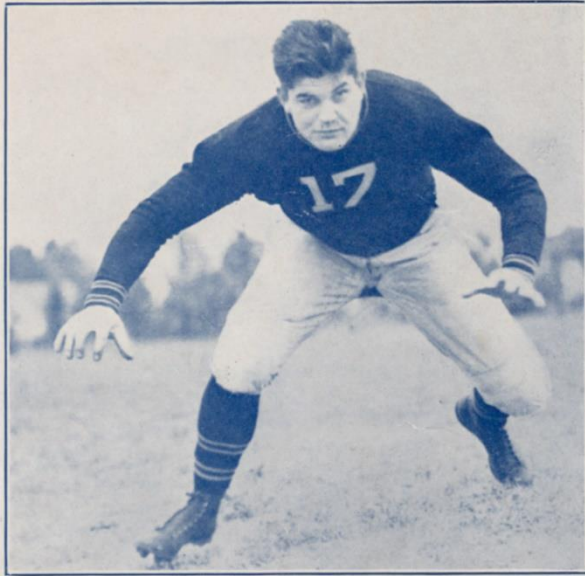
Because of the goal posts being placed on the goal-line the following rules become effective:

1. A ball kicked from the field of play, except one scoring a goal, which strikes the goal posts or cross-bar before being touched by a player of either side, shall become a dead ball and is to be ruled a touchback.

2. A ball kicked from behind the goal-line which strikes the goal posts or cross-bar and is recovered by the opponents in the end zone shall be ruled a touchdown. In the event it is recovered by a player of the kicking team, or rolls outside the side line extended, or beyond the end line in the end zone, it shall be ruled a safety. Should the ball strike the goal posts or cross-bar and continue into the field of play it shall be played as if it did not hit the goal posts.

3. A forward pass thrown from the field of play which strikes the goal posts or cross-bar before or after it has been touched by an eligible player and before it has touched the ground shall be declared incomplete and ruled a touchback.

4. A forward pass thrown from behind the goal-line which strikes the goal posts or cross-bar shall be subject to recovery by the opposing team or any eligible player of the passing team before it strikes the ground. (The passer is included among the eligible men.) Should the ball be recovered by an opposing player within the end zone before it strikes the ground it shall be ruled a touchdown. If it is recovered by a member of the passer's team and not advanced into the field of play, or bounds beyond the side line extended, or beyond the end line, it shall be ruled a safety. Should the ball strike the goal posts or cross-bar and continue into the field of play it shall remain in play as though it had not touched any obstruction.



TURK EDWARDS
Boston Redskins

BROOKLYN DODGERS SONG and CHEERS

RAH! RE! RAH! RE! RAH! RE!
BROOKLYN! BROOKLYN! BROOKLYN!
 heh! HEH!

Whistle, BOOM! Whistle, BOOM! Whistle, BOOM!
BROOKLYN! BROOKLYN! Let's GO!

(YALE'S—DOWN THE FIELD) Please sing with the Band

March, march on down the field
FIGHT for our Brooklyn
Break through the Boston's line
Their strength to defy;
We'll give a cheer for Brooklyn's men.
We're here to win again.
Boston's team may fight to the end
But we will WIN! RAH! RAH! RAH! (repeat song)

BROOKLYN DODGERS FOOTBALL CLUB (National Football League)

1934—SCHEDULE OF HOME GAMES—1934

- Sept. 30—BOSTON REDSKINS, at Ebbets Field
- Oct. 7—CHICAGO BEARS, at Ebbets Field
- Oct. 14—N. Y. GIANTS, at Polo Grounds
- Oct. 28—PITTSBURGH PIRATES, at Ebbets Field
- Nov. 4—CHICAGO CARDINALS, at Ebbets Field
- Nov. 25—PHILADELPHIA EAGLES, at Ebbets Field
- Nov. 29—(Thanksgiving Day)—N. Y. GIANTS, at Ebbets Field

Buy choice tickets in advance at
Dodger Office, 305 Washington St.
(Brooklyn Eagle Bldg.)

Telephone: MAin 4-6837

FOLLOW THE DODGERS

Camels

WAKE UP
YOUR
ENERGY!



Smokers everywhere are turning to Camels for their delightful "energizing effect." You'll enjoy them, too! And remember—the finer, MORE EXPENSIVE TOBACCOS—Turkish and Domestic—used in the manufacture of Camels never get on your nerves . . . never fire your taste.



COSTLIER TOBACCOS