

OFFICIAL PROGRAM

15<sup>c</sup>

NEW YORK

*Giants*



OCTOBER 22

**STEELERS-CARDINALS**

1 9 4 4



DEFEND THE CONSTITUTION



"Yes, sir, *that's fine tobacco-*"

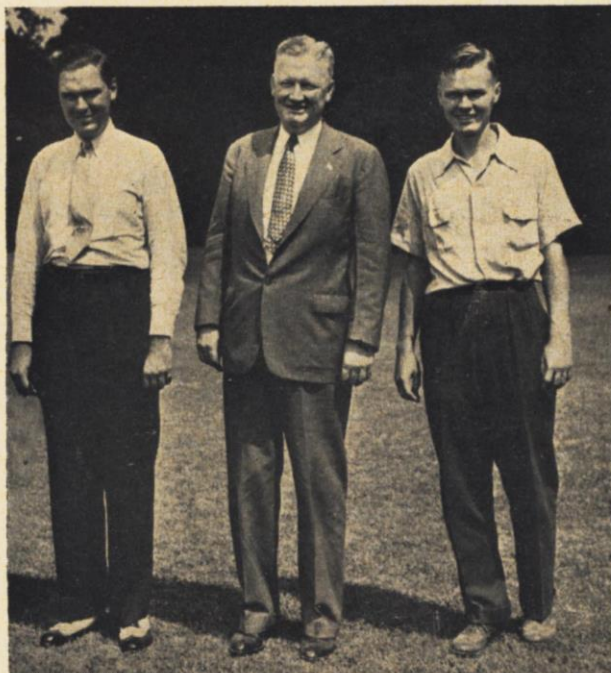
**LUCKY STRIKE**  
means fine tobacco

*Yes, sir! L.S./M.F.T.*





# Twenty Years of Giant Football Stress Progress



## THE MARA FAMILY

From left to right—John V., Tim and Wellington, who is in the service of his country.

**T**HE New York Giants football organization bids you welcome to the Polo Grounds, and to another big season of professional football thrills. It would be futile to say that 1944 football is up to the standard of the big years before the war. The vast list of National League players in the various branches of our national service, the big roster of men who, after having distinguished themselves on the professional gridiron, went into the war, would deny the existence of a pre-war standard.

However, the calibre of football which the National League has developed with the restricted material at its command has been truly phenomenal. The circuit has seen more spectacular games than ever. The public has been thrilled as never before. The men have played up to all the possibilities of the rules for clean, hard, close competition, and the sportsmanship has been up to the highest traditions of our most ancient intercollegiate circles.

In fact, our Eastern and Far Western colleges have flattered the National Football League by adopting standout provisions of its rules, notably that which permits forward passing from any point behind the line of scrimmage.

The Giants go into this afternoon's contest with two victories already to their credit. They enter another season of Polo Grounds play under the strong coaching of Steve Owen, and the liberal administration of John V. Mara. Behind John stands the stanch Tim, his father, to whom New York owes the accolade for the perspicacity which brought professional football into this city in that pioneer day when supposedly wise men insisted that pro play could not hope to cope with the powerful attractions of the colleges.

However, the pros as a group, and the Giants in particular, have done a grand job. The National League now celebrates its twenty-fourth season, and the Giants revel on their twentieth birthday.



*Designed for Your  
PLEASURE*



## Where Skill really Counts . . .

It takes more than a football suit to make a star half-back . . . and it takes more than a distilling plant to make a truly great whiskey like Seagram's 7 Crown.

Yes . . . and it takes even more than treasured reserves of many different fine whiskeys . . . even more than ample stocks of genuine neutral grain spirits. *Most of all, it takes skill, and craftsmanship, and experience, to achieve the exquisite flavor and*

bouquet and mellow *lightness* of Seagram's 7 Crown to keep its rare excellence unchanged in wartime.

Today, as always, Seagram's 7 Crown is one of the world's great whiskeys . . . every drop 100% pre-war quality. True, it's scarcer now than usual . . . but there's still enough for you to enjoy in moderation. Sip it slowly . . . savor its excellence . . . and be thankful that Seagram's 7 Crown is still to be had!

*MOST PLEASING  
TODAY, TOMORROW  
AND ALWAYS*

*Say Seagram's  
and be Sure of  
Pre-War Quality*



Seagram's *Seven* **7** *Crown*

*Seagram's 7 Crown Blended Whiskey. 65% grain neutral spirits. 86.8 Proof. Seagram-Distillers Corporation, Chrysler Building, New York*



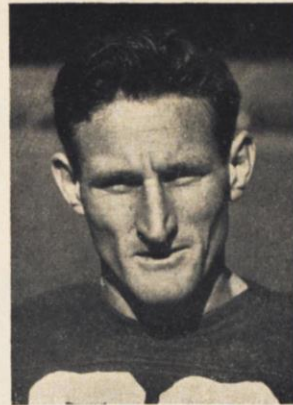
# NEW YORK



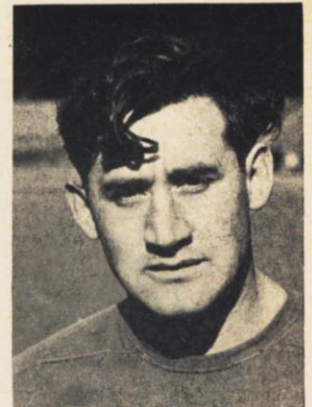
MEL HEIN



LEN CALLIGARO



O'NEALE ADAMS



FRANK LIEBEL

# GIANTS

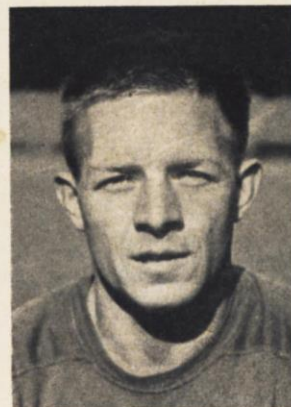
1944



WARD CUFF



ARNIE HERBER



LEN YOUNCE



BILL PETRILAS





HERE'S JUST WHAT  
YOU'VE BEEN  
LOOKING FOR!



Been looking for a cigarette that hasn't let down on flavor? Then Raleigh is your answer! For Raleighs are still made from *fully aged*, golden domestic leaf, blended with rich, aromatic Turkish tobaccos from ample stocks of vintages that are now irreplaceable.

Yes, and Raleighs are double-fresh too. They're kept that way by the best known moistening ingredient, and by an exclusive laminated inner wrap. Get fresher Raleighs today—they taste better *naturally!* Quality is never rationed in a Raleigh.

# Raleighs



PLAIN OR TIPPED

UNION MADE

If your cigarette tastes "different"... smoke Raleigh

TUNE IN: Hildegarde Tuesdays, Henny Youngman Show Wednesdays, "People Are Funny" Fridays, NBC Network.



# Paschal, Cuff, Soar and Hein

## Back with Giants



Steve Owen, Tuffy Leemans and Red Smith, the Boss of the Giants, and two assistant coaches.

**T**HERE are a lot of new faces among the Giants. And there are a lot of old ones, as well. Steve Owen, the Old Master, once again has developed a fine combination of older and younger talent. Once more Stout Steve has held strong to the basic tenets of sound football. Again you will find the Giants as powerful a defensive club as there is in this country. But with that strength in protecting the goal line, there also is a flair for attack which will maintain the 1944 Polo Grounders as contenders for the title.

The coaching staff of the Giants is strong. Steve has with him Tuffy Leemans and Red Smith.

This is Steve's fourteenth season as boss of the Giants. With George Halas in the service, there is only one coach in the National League who shows a longer record of service—Curly Lambeau of Green Bay. Curly dates back to 1921, and the first season of the pro circuit.

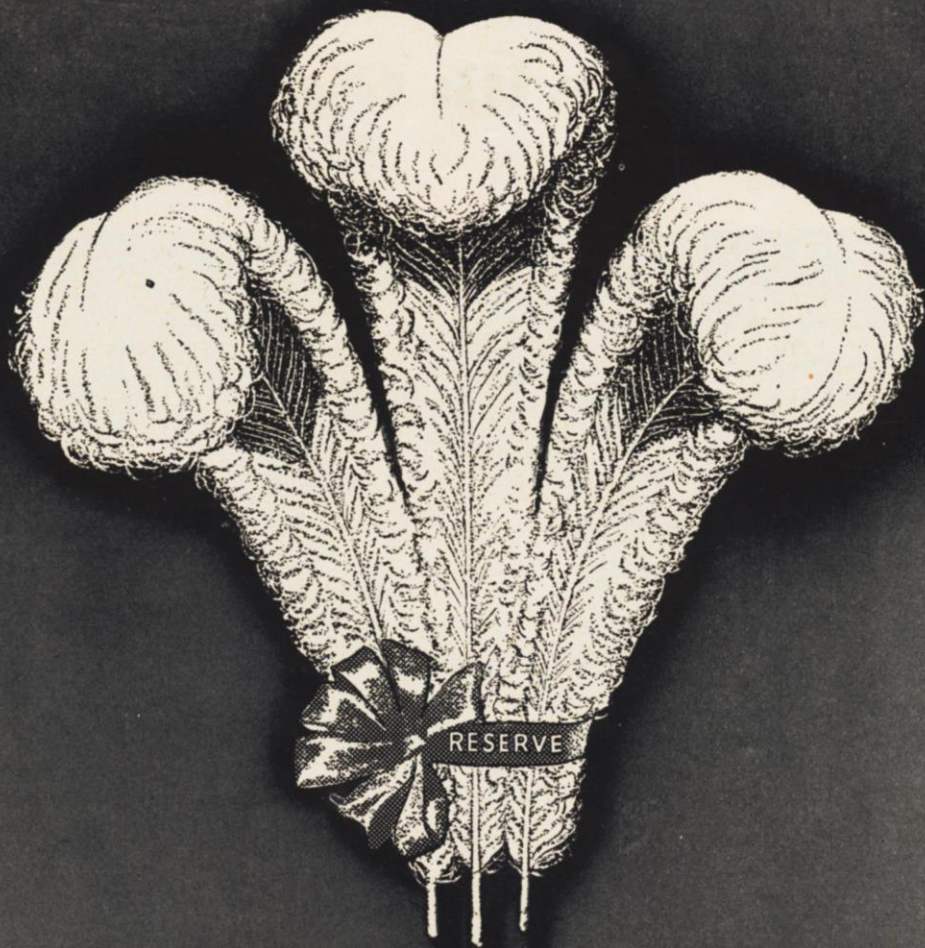
It was in 1931 that Owen first appeared as the coach at the Polo Grounds. In midseason Leroy Andrews resigned and Tim Mara promoted Stout Steve.

When the Giants came into the league in 1925, Bob Folwell, who had coached at the University of Pennsylvania, was the pilot. In 1926, Dr. Joe Alexander took over. The 1927 season found Earl Pottinger at the helm, and in 1929, Andrews got the job.

Season after season the Giants muddled around trying to find the right coach, the proper spot in the football sun. But once Owen had taken over, Mara's problems were solved. The coaching system stabilized itself, the Giants became tremendous powers in the National League.

In that first season of 1931, Owen finished with a .500 record. In 1932, he fell to .400. But in 1933, the New York club topped the East with 11 won and only 3 lost, and the reign of Stout Steve got straightened away to big things.





*First among fine whiskies*

# THREE FEATHERS

*Reserve*

*Yours to enjoy*  
**AT ITS PRE-WAR BEST**

With its rare basic whiskies\* drawn from precious pre-war stocks, Three Feathers is skillfully blended with the choicest of American grain neutral spirits. Three Feathers, at its pre-war best, is deservedly termed "First Among Fine Whiskies"!



FEATHER YOUR NEST...HOLD THE WAR BONDS YOU BUY!... Three Feathers Distributors, Inc., New York. Blended Whiskey, 86 proof. \*The straight whiskies in this product are 5 years or more old. 40% straight whiskey, 60% grain neutral spirits. 12½% straight whiskey 5 years old, 12½% straight whiskey 6 years old, 15% straight whiskey 7 years old.



# Here Are Some Figures on Today's Opponents

## CARD-PITT

	Atts.	Yds. G.	Long G.	Ave.
Grigas	40	130	22	3.3
Thurbon	20	76	25	3.8
Magulick	1	49	49	49.0
Butler	20	48	14	2.4
McDonough	3	7	4	2.3
Semes	1	3	3	3.0
Rankin	1	2	2	2.0
Masters	1	-14	0	
McCarthy	4	-42		

## BALL CARRYING

Cuff	9	28	7	3.1
Kinscherf	6	15	4	2.5
Soar	6	5	2	.8
Beebe	3	5	2	1.7
Petrilas	3	3	4	1.0
Galligaro	1	3	3	3.0
Herber	2	-23		

## NEW YORK

	Atts.	Yds. G.	Long G.	Ave.
Cuff	9	28	7	3.1
Kinscherf	6	15	4	2.5
Soar	6	5	2	.8
Beebe	3	5	2	1.7
Petrilas	3	3	4	1.0
Galligaro	1	3	3	3.0
Herber	2	-23		

## PASSING

### CARD-PITT

	Atts.	Com.	Yds. Gained	Td. Passes	Pct.	L.P.	Interc.
McCarthy	36	8	106	0	.222	38	5
McDonough	16	8	182	2	.500	67	3
Grigas	3	2	38	1	.667	22	0
Masters	7	1	13	0	.143	13	2

### NEW YORK

	Atts.	Com.	Yds. Gained	Td. Passes	Pct.	L.P.	Interc.
Soar	5	4	113	2	.800	35	1
Herber	16	3	23	0	.187	13	2

## PASS RECEIVING

### CARD-PITT

	No.	Yds. G.	Long	Tds.
Rucinski	7	104	40	1
Butler	3	109	67	2
Thurbon	2	15	8	0
Bova	2	17	5	0
Grigas	2	33	36	0
Wager	1	38	38	0
Kichefski	1	10	10	0
Magulick	1	13	13	0

### NEW YORK

	No.	Yds. G.	Long	Tds.
Liebel	3	64	28	1
Adams	2	62	35	1
Cuff	1	6	6	0
Barker	1	4	4	0

## PASS INTERCEPTANCE

### CARD-PITT

	No.	Yds. Ret.	Tds. Ret.
Butler	2	16	0
Thurbon	2	14	0
Semes	1	0	0

Livingston	3	10	0
Hein	2	14	0
Soar	1	18	0
Piccolo	1	3	0
Kinscherf	1	3	0

### NEW YORK

	No.	Yds. Ret.	Tds. Ret.
Livingston	3	10	0
Hein	2	14	0
Soar	1	18	0
Piccolo	1	3	0
Kinscherf	1	3	0

## PUNTING

### CARD-PITT

	No.	Ave.	Long.
McCarthy	12	34.2	48
Martin	6	30.0	43
Masters	2	45.5	52

Younce	13	42.3	72
Beebe	4	40.0	45

### NEW YORK

	No.	Ave.	Long.
Younce	13	42.3	72
Beebe	4	40.0	45

## PUNT RETURNS

### CARD-PITT

	No.	Ave.	Long.	Tds.
Butler	3	7.4	16	0
Grigas	2	8.0	9	0

Petrilas	3	11.3	18	0
Soar	3	6.6	12	0
Carroll	1	28.0	28	1
Paschal	1	15.0	15	0

### NEW YORK

	No.	Ave.	Long.	Tds.
Petrilas	3	11.3	18	0
Soar	3	6.6	12	0
Carroll	1	28.0	28	1
Paschal	1	15.0	15	0

## KICK-OFF RETURNS

### CARD-PITT

	No.	Ave.	Long.	Tds.
Grigas	9	17.6	35	0
Thurbon	3	31.3	55	0
Butler	3	24.0	29	0
Magulick	1	21.0	21	0
Perko	1	3.0	3	0
Bulger	1	5.0	5	0

Paschal	5	23.6	31	0
---------	---	------	----	---

### NEW YORK

	No.	Ave.	Long.	Tds.
Paschal	5	23.6	31	0



## PROBABLE STEELER-CARDS LINEUP

GAME  
2:30

<b>RUCINSKI</b> 75 Left End	<b>SCHULTZ</b> 48 Left Tackle	<b>BAKER</b> 22 Left Guard	<b>WUKITS</b> 50 Center	<b>PERKO</b> 39 Right Guard	<b>BULGER</b> 73 Right Tackle	<b>KICHEFSKI</b> 45 Right End
<b>GRIGAS</b> 66 Quarterback						
<b>BUTLER</b> 23 Left Halfback		<b>MASTERS</b> 40 Fullback			<b>MAGULICK</b> 53 Right Halfback	

## STEELER-CARDS 1944 FOOTBALL ROSTER

No.	Player	Position	Weight	Height	College
17	Merkovsky, Al	Tackle	235	6:2	Pittsburgh
21	Robnett, Marshal	Guard	208	6:00	Texas A. & M.
22	Baker, Conway	Tackle	230	5:00	Centenary
23	Butler, John	Back	185	5:11	Tennessee
24	McCarthy, John	Back	155	5:8	St. Francis
28	Rankin, Walt	Back	200	6:00	Texas Tech
29	Doyle, Ted	Tackle	230	6:2	Nebraska
33	Semes, Bernie	Back	192	5:7	Duquesne
39	Perko, John	Guard	210	6:00	Duquesne
40	Masters, Walter	Back	185	5:11	Pennsylvania
41	Bova, Anthony	End	190	6:1	St. Francis
43	Booth, Clarence	Tackle	230	6:00	So. Methodist
45	Kichefski, Walt	End	212	6:1	Miami Uni.
48	Schultz, Eberle	Tackle	250	6:4	Oregon State
49	Thurbon, Robert	Back	172	5:10	Pittsburgh
50	Wukits, Albert	Center	220	6:3	Duquesne
53	Magulick, George	Back	154	5:9	St. Francis
54	Marko, Stephen	Back	200	6:00	
60	Duggan, Cliff	Tackle	225	6:3	Oklahoma
63	Currivan, Donald	End	195	6:00	Boston
64	Marotti, Louis	Guard	220	5:11	Toledo
66	Grigas, John	Back	205	6:00	Holy Cross
69	Wager, Clinton	End	220	6:6	St. Mary's
73	Bulger, Chester	Tackle	235	6:2	Auburn
75	Rucinski, Edward	End	196	6:2	Indiana

Co-Coaches: Walter Kiesling and Phil Handler  
 Assistant Coaches: James Leonard and Buddy Parker



WHEN THE GOAL  
IS ENJOYMENT

BLENDED WHISKEY: 86.8 PROOF—CALVERT "RESERVE"—65% GRAIN NEUTRAL



## PROBABLE NEW YORK GIANTS LINEUP

	<b>ADAMS, O.</b> 30 Left End	<b>COPE</b> 36 Left Tackle	<b>YOUNCE</b> 60 Left Guard	<b>HEIN</b> 7 Center	<b>AVEDISIAN</b> 55 Right Guard	<b>CARROLL</b> 26 Right Tackle	<b>LIEBEL</b> 22 Right End
				<b>BARKER</b> 42 Quarterback			
	<b>HERBER</b> 20 Left Halfback			<b>PASCHAL</b> 8 Fullback		<b>CUFF</b> 14 Right Halfback	

## NEW YORK GIANTS 1944 FOOTBALL ROSTER

No.	Player	Pos.	Wgt.	Hgt.	Age	College	Yrs. Giants
2	Calligaro, Len	B	190	5:11	22	Wisconsin	First
5	Petrilas, William	B	195	6:	27	_____	First
7	Hein, Mel	C	232	6:4	35	Wash. St.	Fourteenth
8	Paschal, Bill	B	198	6:	23	Georgia Tech.	Second
11	Weiss, John	E	195	6:3	23	_____	First
14	Cuff, Ward	B	198	6:1	30	Marquette	Eighth
15	Soar, Hank	B	216	6:	29	Providence	Eighth
20	Herber, Arnie	B	210	6:	33	Regis	First
22	Liebel, Frank	E	205	6:2	25	Norwich U.	Third
24	Livingstone, Howard	B	190	6:1	22	Fullerton	First
25	Kinscherf, Carl	B	185	6:	24	Colgate	Second
26	Carroll, Vic	T	230	6:4	30	Nevada	Second
28	Adams, Verlin	E	205	6:1	26	Morris-Harvey	Second
29	Piccolo, Bill	C	186	5:11	23	Canisius	Second
30	Adams, O'Neale	E	195	6:3	25	Arkansas	Third
31	Visnic, Larry	G	195	5:11	24	Kansas	Second
33	Sivell, James (Happy)	G	215	5:8	25	Auburn	First
36	Cope, Frank	T	232	6:3	28	Santa Clara	Seventh
37	Sulaitis, Joe	B	210	6:2	23	_____	Second
39	Kane, Herbert	T	220	6:	22	E. C. Teachers	First
42	Barker, Hubeth	B	195	5:11	24	Arkansas	Third
44	Beebe, Keith	B	180	5:9	22	Occidental	First
49	Damiani, Frank	T	225	6:1	22	Manhattan	First
50	Strong, Ken	B	210	6:1	37	N. Y. U.	Fifth
55	Avedisian, Charley	G	205	5:9	28	Providence	Third
60	Younce, Len	G	210	6:1	25	Oregon	Third
69	Umont, Frank	G	220	5:11	26	_____	Second
70	Caranci, Roland	T	214	6:	21	Colorado	First

Head Coach: Steve Owen, Phillips U.  
 Backfield Coach: Tuffy Leemans, George Washington  
 Backfield Coach: Leland Shaffer, Kansas State

Line Coach: Richard (Red) Smith, Notre Dame  
 Trainers: Gus Mauch, Charley Porter  
 Physician: Francis J. Sweeny, M. D.

# Clear Heads Choose

# Calvert



ALL SPIRITS. CALVERT "SPECIAL" 72 1/2% GRAIN NEUTRAL SPIRITS. CALVERT DISTILLERS CORP., N. Y. C.





By Peter Arno

"She says she likes you 'cause you don't have '5 o'clock Shadow'."

"Gee, I guess underneath it all she's just like the girls back home, huh?"



AVOID '5 O'CLOCK SHADOW' WITH



**GEM**

© 1944, American Safety Razor Corp. **RAZORS and BLADES**

TICKETS ON SALE NOW  
FOR NEXT SUNDAY

In Lower Grand Stand Back of Section 16

*Also on Sale at*

NEW YORK FOOTBALL GIANTS

11 West 42nd Street

For all Home Games

*and at*

NEW YORK BASEBALL GIANTS

104 West 42nd Street

---

GIANTS' SCHEDULE

*at home*

OCTOBER 29.....Philadelphia

NOVEMBER 5 .....Boston

NOVEMBER 9 .....Green Bay

NOVEMBER 26 .....Brooklyn

DECEMBER 3 .....Washington

AWAY

NOVEMBER 12 .....Giants in Philadelphia

DECEMBER 10.....Giants in Washington

---

Giants' Next Game at Polo Grounds

**SUNDAY, OCTOBER 29th**

**PHILADELPHIA**

Reorganized—Refurbished—A Fine Team  
which has not been Beaten this Season

---

1944 Record of

NEW YORK GIANTS

Giants, 22; Boston, 10

Giants, 14; Brooklyn, 7



## THESE MEN OFFICIATE IN NATIONAL LEAGUE

The National League makes it a practice not to announce, in advance, the identity of the men who have been assigned to officiate in any contest. The list of officials, however, is static. Note their numbers, and identify them from this roster:

### Referees

Samuel A. Weiss . . . . . 2	Ronald J. Gibbs . . . . . 5
Tom Dowd . . . . . 4	E. F. Tommy Hughitt 7
Carl K. Rebele . . . . . 8	

### Umpires

John J. Schommer . . . . . 12	Harry D. Robb . . . . . 15
C. H. Brubaker . . . . . 14	Fay Vincent . . . . . 17
John B. Kelly . . . . . 18	

### Field Judges

Charles J. Sweeney . . . . . 22	Wm. E. Downes . . . . . 25
Lloyd Brazill . . . . . 23	Eugene E. Miller . . . . . 26
Eddie Tryon . . . . . 29	

### Head Linesmen

Earl Cavanaugh . . . . . 30	Irv Kupcinet . . . . . 32
Charlie F. Berry . . . . . 31	Larry Conover . . . . . 34
Louis James Gordon . . . . . 35	

## NATIONAL LEAGUE STANDINGS

### Last Sunday's Results

New York 14, Brooklyn 7.  
Washington 21, Boston 14.  
Chicago Bears 34, Car.-Pitts. 7.  
Cleveland 20, Detroit 17.

### EASTERN DIVISION

New York . . . . . 2	0	0	1.000	36	17
Philadelphia . . . . . 1	0	1	1.000	59	38
Washington . . . . . 1	0	1	1.000	52	45
Brooklyn . . . . . 0	3	0	.000	28	47
Boston . . . . . 0	3	0	.000	31	71

### WESTERN DIVISION

Green Bay . . . . . 4	0	0	1.000	117	48
Cleveland . . . . . 3	0	0	1.000	69	52
Detroit . . . . . 1	2	0	.333	42	61
Chicago . . . . . 1	2	0	.333	69	68
Car.-Pitts. . . . . 0	3	0	.000	42	98

### TO-DAYS SCHEDULE

Car.-Pitts. at New York (Polo Grounds). Brooklyn at Washington, Boston at Philadelphia, Detroit at Chicago Bears, Cleveland at Green Bay.

## IMPORTANT PENALTIES

1 Offside, both sides . . . . .	No penalty
2 Offside . . . . .	5 yards
3 Holding, etc., by defensive side . . . . .	5 yards
4 Man in motion—no shift . . . . .	5 yards
5 Crawling . . . . .	5 yards
6 Taking out time more than three times during half . . . . .	5 yards
7 Running into kicker . . . . .	5 yards
8 Substitute failing to report . . . . .	5 yards
9 Unreasonable delay in putting ball into play . . . . .	5 yards
10 Starting forward before ball . . . . .	5 yards
11 Illegal use of hands and arms by offense . . . . .	15 yards
12 Roughing kicker . . . . .	15 yards
13 Unnecessary roughness . . . . .	15 yards
14 Intentional throwing of forward pass to ground . . . . .	15 yards
15 Unsportsmanlike conduct . . . . .	15 yards
16 Man in motion on shift . . . . .	15 yards
17 Interference on forward by passing team . . . . .	15 yards
18 Clipping from behind . . . . .	15 yards
19 Interference on forward by defense . . . . .	1st down at point of foul
20 Penalty declined . . . . .	

== Rogers Peet...Makers of Fine Clothes ==



## Important Jobs!

"I'm here," said a customer the other day, "because I understand that Rogers Peet tailoring confers that quiet distinction required by men who move in important circles".

We invite you too, to "get to know the modern Rogers Peet".

Our roster of important names reads like a Blue Book of Success.

Styles for young men, and men who never grow old.

The correct accessories, too.

*Rogers Peet*  
*Company*

"Service... with a smile."

In New York:  
Fifth Avenue  
at 41st Street

13th Street  
at Broadway

Warren Street  
at Broadway

And in Boston:  
Tremont St.  
at Bromfield St.



I predict a long and sparkling life!



JUST LISTEN TO THE LIFE in a drink mixed with Canada Dry Water. "PIN-POINT CARBONATION"...millions of tinier bubbles...keeps high-balls full of sparkle and zest, to the last sip.

Canada Dry Water—the world's most popular club soda—is preferred in the finest bars, hotels and clubs. Its special formula points up the flavor of tall drinks. Serve sparkling Canada Dry Water in your home...it costs no more than ordinary mixers.

BIG BOTTLE  
**15¢**  
Plus deposit



**CANADA** WORLD FAMOUS **DRY WATER**

The Life of the Drink

**THE STEVENS METAL PRODUCTS COMPANY**

NILES

OHIO

\* \* \* \*

Makers Of All Types

STEEL DRUMS

STEEL BARRELS

To LOOK YOUR BEST..  
**BUY THE BEST**  
**BUY DOUGLAS!**

The Clipper  
No. 4665

**\$6.50**



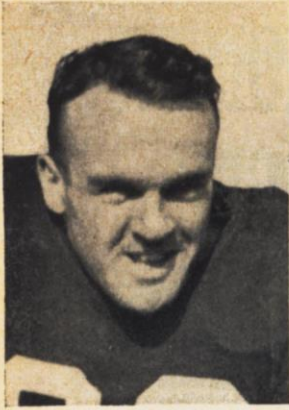
Other Styles  
\$6.50 to \$8.50



W. L. **Douglas Shoes**  
W. L. DOUGLAS SHOE CO., BROCKTON 15, MASS.

17 Stores in Greater New York and New Jersey  
3 Stores in Philadelphia—4 Stores in Boston.  
Also Stores in Principal Cities. Good Dealers Everywhere.



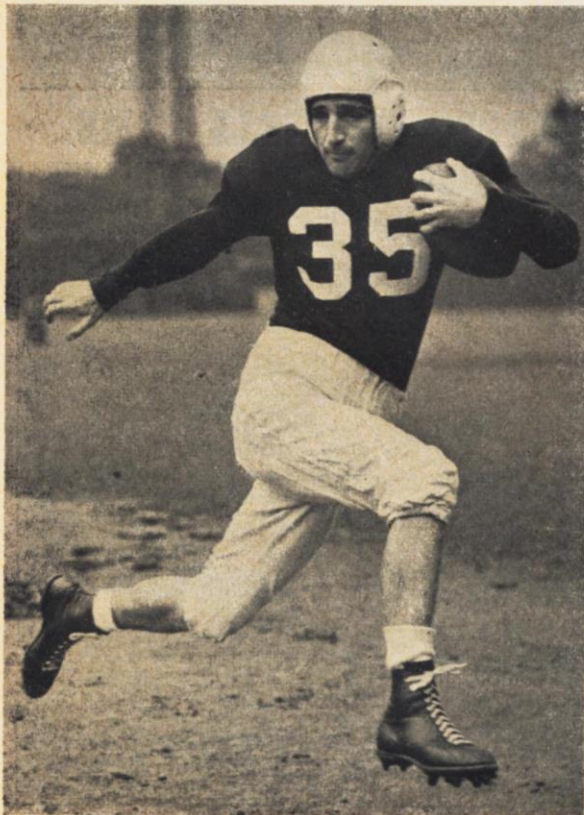


# STEELER- CARDINALS

JOHN GRIGAS



JOHN BUTLER



JOHN McCARTHY

# pm for Pleasant Moments

AT THE FINAL GUN,  
*Pour-ward March to PM! Losers*  
win . . . winners double their  
pleasure . . . by enjoying that  
Perfectly Marvelous PM flavor  
in a Highball, Old-Fashioned  
or PManhattan!



*If it isn't PM  
it isn't an Evening*

National Distillers Products Corporation, New York. 86.8 Proof.  
Blended Whiskey. • 49% Grain Neutral Spirits.



The FRESHER  
The BETTER!



APPLE "HONEY"  
HELPS KEEP  
OLD GOLDS  
FRESH!



*Official Timing Watch*

**NEW YORK GIANTS vs. STEELER-CARDS FOOTBALL GAME**

*Longines*

*the World's Most Honored Watch*

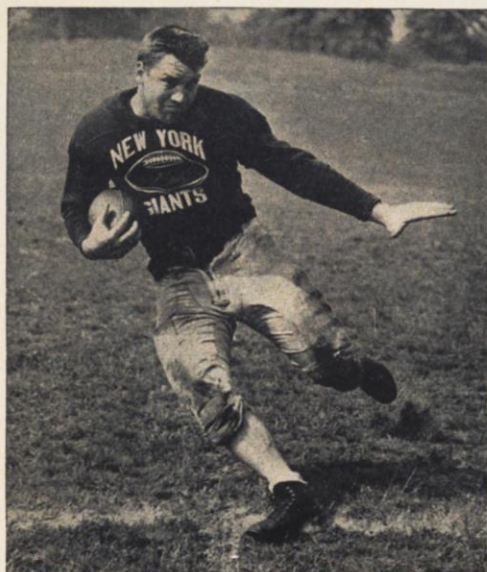
*winner of 10 world's fair grand prizes and 28 gold medal awards*



*Product of Longines-Wittnauer Watch Co.*



# Steelers-Cardinals Wartime Combination with Power



HANK SOAR

**I**N the Steelers-Cardinals, the Giants today encounter a new combination, born of the war. When peace comes again, and manpower problems are solved in the greatest football boom in the history of this or any other country, the National League map doubtless will be changed a bit.

In the meantime, Pittsburgh and the Chicago Cardinals have joined forces and placed on the field a far more powerful outfit than would have been possible had the two cities attempted to get out their own representations.

Last year Pittsburgh and Philadelphia entered into a combine, and this team split a pair of games with the Giants.

When Pittsburgh had a team all to itself, it won only four, with one tie, in 19 games with New York.

When the Cardinals were a club unto themselves, they met the Giants a dozen times and won only twice. Here are the Giants' records

against the various teams represented in the Pittsburgh-Cardinal outfit:

## NEW YORK vs. PITTSBURGH (New York won 14; Pittsburgh won 4; 1 Tied)

1933—New York, 23; Pittsburgh, 2
New York, 27; Pittsburgh, 3
1934—New York, 14; Pittsburgh, 12
New York, 17; Pittsburgh, 7
1935—New York, 42; Pittsburgh, 7
New York, 13; Pittsburgh, 0
1936—Pittsburgh, 10; New York, 7
1937—New York, 10; Pittsburgh, 7
New York, 17; Pittsburgh, 0
1938—New York, 27; Pittsburgh, 14
Pittsburgh, 13; New York, 10
1939—New York, 14; Pittsburgh, 7
New York, 23; Pittsburgh, 7
1940—Pittsburgh, 10; New York, 10
New York, 17; Pittsburgh, 7
1941—New York, 37; Pittsburgh, 10
New York, 28; Pittsburgh, 7
1942—Pittsburgh, 13; New York, 10
Pittsburgh, 17; New York, 9
(Points—New York, 355; Pittsburgh, 153)

## NEW YORK vs. PHIL.-PITT. (New York won 1; Phil.-Pitt won 1)

1943—Phil.-Pitt., 28; New York, 14
1943—New York, 42; Phil.-Pitt., 14
(Points, New York, 56; Phil.-Pitt., 42)

## CHICAGO CARDINALS vs. NEW YORK (New York won 10; Chicago Cardinals won 2; None tied)

1926—New York, 20; Cardinals, 0
1927—New York, 28; Cardinals, 7
1929—New York, 24; Cardinals, 21
1930—New York, 25; Cardinals, 12
New York, 13; Cardinals, 7
1935—Cardinals, 14; New York, 13
1936—New York, 14; Cardinals, 6
1938—New York, 6; Cardinals, 0
1939—New York, 17; Cardinals, 7
1941—Cardinals, 10; New York, 7
1942—New York, 21; Cardinals, 7
1943—New York, 24; Cardinals, 13
(Points—New York, 212; Chicago Cardinals, 104.)



# Strong Schedule, Strong Teams, As Pro League Rolls On

THE National Professional Football League rolls on. The field shows strong teams, the schedule shows strong dates, powerful combinations, attractive bracketings. To make things all the more interesting, most of the standout players of 1943 have come back. Even the dazzling, reliable, terrific Don Hutson, who at the close of last season insisted he had had enough and wanted to retire to his business in Green Bay. Since 1940, Don has been starring, and there he is again, big as life.

The National League this season celebrates its twenty-fourth year. It was born in 1921, with a membership made up of Chicago Staleys, now the Bears, Buffalo, Akron, Green Bay, Canton, Dayton, Rock Island, Chicago Cardinals, Cleveland, Rochester, Detroit, and Columbus-Cincinnati.

There had been professional football long before 1921. It had been played in Canton and Massillon, it had been played in Franklin, Pa. But not until 1921 did the National League begin to function.

It wasn't until 1925 that New York came into the league. The Giants won eight and lost four in that pioneer

season. Money they did not make. Scoffers said the idea might go in the West, but in the East, especially in New York, it would prove futile.

However, Tim Mara persisted, and now the National Professional Football League is a tremendous force in the gridiron game in this country.

Going over the list of players in the National League we find that of the standout twenty ball carriers of last year, 15 ounce again are available.

Back in harness are Bill Paschal, Andy Farkas, Ward Cuff, Jack Hinkle, Frankie Sinkwich, Gary Famiglietti, Ray Nolting, Johnny Grigas, Johnny Butler, Pug Manders, and many others.

Of the 10 standout pass receivers of 1943, nine are back—Hutson, Joe Aguirre, Harry Jancunski, Ray McLean, Grigas, Farkas, Ed Rucinski, George Wilson and W. Moore.

Back again is Slinging Sam Baugh, whom you will see at the Polo Grounds on December 3. Arnie Herber, once of the Packers, is back on the job, with the Giants. Frankie Filchock has returned to the Redskins.

## National League Dates for 1944

Sunday, October 29

Boston at Brooklyn  
Cleveland at Chicago Bears  
Card-Pitt at Washington  
Green Bay at Detroit  
Philadelphia at New York

Sunday, November 5

Green Bay at Chicago Bears  
Boston at New York  
Philadelphia at Brooklyn  
Detroit vs. Card-Pitt at Pittsburgh  
Cleveland at Washington

Sunday, November 12

Boston at Chicago Bears  
Washington at Brooklyn  
Card-Pitt at Detroit  
Green Bay at Cleveland  
New York at Philadelphia

Sunday, November 19

Brooklyn at Boston  
Chicago Bears at Detroit  
Cleveland vs. Card-Pitt at Chicago  
Green Bay at New York  
Philadelphia at Washington

Sunday, November 26

Boston at Washington  
Brooklyn at New York  
Chicago Bears at Philadelphia  
Green Bay vs. Card-Pitt at Chicago  
Detroit at Cleveland

Sunday, December 3

Boston at Detroit  
Brooklyn at Philadelphia  
Chicago Bears vs. Card-Pitt at Pittsburgh  
Washington at New York

Sunday, Dec. 10

Cleveland at Philadelphia  
New York at Washington



*Broadway  
Cocktail Lounge*

RON PERRY  
and his Orchestra

for dancing at cocktail  
time, dinner and supper,  
except Monday

*Columbia  
Room*

JOSE MORAND  
and his Orchestra

at dinner and supper,  
excepting Sunday

**HOTEL ASTOR**

TIMES SQUARE  
R. K. CHRISTENBERRY, PRES.

ESTABLISHED 1853

**CORN EXCHANGE BANK  
TRUST COMPANY**

HEAD OFFICE

WILLIAM AND BEAVER STREETS  
NEW YORK

74 BRANCHES CONVENIENTLY LOCATED IN GREATER NEW YORK

MEMBER FEDERAL DEPOSIT INSURANCE CORPORATION





**MILDER  
BETTER TASTING  
COOLER**

# **CHESTERFIELD IS ALL THREE**

**EVERYTHING A GOOD CIGARETTE SHOULD BE  
MILDER · COOLER · BETTER-TASTING  
YOU CAN ENJOY THEM WITH EVERY CONFIDENCE  
BECAUSE OF THEIR**

**RIGHT COMBINATION · WORLD'S BEST TOBACCOS**  
*They Satisfy*

Copyright 1944, LIGGETT & MYERS TOBACCO CO.



★ "KEEP EM FLYING" ★

SEASON 1944  
OCTOBER 22

PROGRAM NAMES AND NUMBERS

# FOOTBALL

---

NEW YORK  
GIANTS

VS

CARD  
PITTS

---

BUY



BONDS

POLO GROUNDS  
NEW YORK



# GIANTS

POSITION	NAME	NO.
L. E.	ADAMS	30
L. T.	COPE	36
L. G.	YOUNCE	60
C	HEIN	7
R. G.	AVEDISIAN	55
R. T.	CARROLL	26
R. E.	LIEBEL	22
Q. B.	BARKER	42
L. H. B.	HERBER	20
R. H. B.	PETRILAS	5
F. B.	PASCHAL	8

*SUB: Calligaro 2, Weiss II, Cuff 14, Soar 15, Livingstone 24, Kinscherf 25 U. Adams 28, Piccolo 29 Visnic 31, Sivell 33, Cope 36, Sulaitts 37, Kane 39, Beebe 44. Damiaui 49, Strong 50, Umont 69,*



# CARD-PITTS

POSITION	NAME	NO.
L. E.	CURRIVAN	63
L. T.	SCHULTZ	48
L. G.	BAKER	22
C	WUKITS	50
R. G.	PERKO	39
R. T.	BULZER	73
R. E.	KICHEFSKI	45
Q. B.	McCARTHY	24
L. H. B.	RUCINSKI	75
R. H. B.	THURBON	49
F. B.	GRIGAS	66

*SUB: Merkovsky 17, Robnett 21, Rankin 28, Doyle 29, Semcs 33, Masters 40, Bova 41, Booth 43, Magulich 53, Matko 54, Duggan, 60, Marolli 64, Wager 69,*



# GIANTS

QUARTERS

1            2            3            4

TOUCHDOWN

GOAL

Goals from FIELD

SAFETY

TOTAL



# CARD-PITTS

QUARTERS

1            2            3            4

TOUCHDOWN

GOAL

Goals from FIELD

SAFETY

TOTAL

Goal after Touchdown 1

TOUCHDOWN 6

Goal from Field 3

SAFETY 2

Time of Period 15 Minutes