

# OFFICIAL PROGRAM



SUNDAY  
SEPT. 16  
1934

Philadelphia  
vs Green Bay

KICKOFF  
2 P. M.

PROGRAM  
No. 6707

PRICE 10 CENTS

SAVE YOUR PROGRAM—FOR IMPORTANT INFORMATION SEE PAGE 12.



“Say  
It  
With  
Votes”



“Say  
It  
With  
Votes”

# Geo. A. Arends

— FOR —

# SHERIFF

DEMOCRATIC TICKET

Your Support Respectfully Solicited

A RESIDENT OF BROWN COUNTY FOR 52 YEARS

Prepared and paid for by Geo. A. Arends, 330 S. Jefferson St., Green Bay, Wis.



# RED TOP CABS

CLEAN - SAFE - EFFICIENT

PHONE HOWARD 50

Beaumont  
Coffee  
Shop  
Before  
the Game

FOOTBALL  
LUNCHEON

Quick Service

YOUR SELECTION OF  
EXCELLENT FOOD



E. L. LAMBEAU

Coach

Coach Curly Lambeau, who got his grid-iron start at East high school, Green Bay, and later played under Rockne at Notre Dame, has been associated with the Packers ever since the team's organization. He has started his 16th consecutive season with the Green Bay Club, and has seen its growth from a small packing company squad to a football machine of international reputation. Lambeau took an active part in the team's play for a number of years, but for the past several seasons has directed the squad from the bench.

Beaumont  
Hotel  
After  
the Game

DINNER  
DE LUXE

THE MOST UP TO DATE  
TAVERN IN THE STATE  
OF WISCONSIN

5:30 to 8 P.M.

SEVENTY-FIVE  
CENTS THE PLATE



**SANITARY  
PADS**

**Diana Mfg. Co.**  
GREEN BAY, WIS.

... **PAPER** NAPKINS  
TOWELS

**CLIFFORD &  
DILWEG**

Attorneys At Law  
313 Bellin Building  
Phone Adams 3690

SUPPORT A REAL PACKER  
BOOSTER FOR CONGRESS

And Remember A Vote For

**CLIFFORD**

— FOR —

**CONGRESS**

Is A Vote In Support of

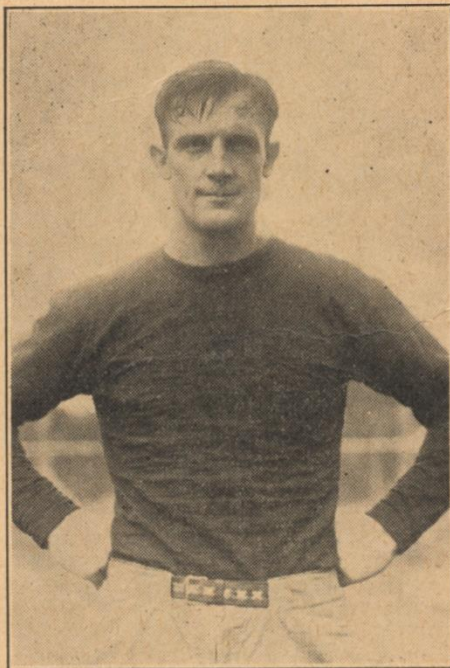
**ROOSEVELT**

Prepared and paid for by J. Clifford,  
Green Bay, Wis.

**Leicht Transfer  
& Storage Co.**

**FIREPROOF  
STORAGE**

121 S. Broadway



**LAVERN DILWEG**

**End**

"Lavvie" shares with Perry the distinction of being the oldest active player in point of service on the Packer squad. He has won professional all-American honors several times, and he frequently has been termed the best end in the country. Dilweg is a law graduate of Marquette University, where he starred as an undergraduate, captaining the squad one season. He entered the pro game with the Milwaukee Badgers, but soon switched to the Packers, and he is now playing his eighth season with Green Bay.

**MOSINEE  
DUBLTOWLS**

America's Finest Fibre  
Towels

USED IN  
EVERY STATE

Manufactured In  
Green Bay  
By The

**BAY WEST  
PAPER CO.**

A Division of the  
MOSINEE PAPER MILLS CO.



Office

Cor. Cedar and Clay Sts.

Phone Howard 214



Best Wishes to the  
"PACKERS" from the  
H. C. PRANGE CO.

GREEN BAY'S LARGEST DEPARTMENT STORE

PACKER'S SCHEDULE -- 1934

September 9 — FORT ATKINSON AT GREEN BAY  
September 16 — PHILADELPHIA AT GREEN BAY  
September 23 — CHICAGO BEARS AT GREEN BAY  
September 30 — NEW YORK GIANTS AT MILWAUKEE  
October 7 — DETROIT AT GREEN BAY  
October 14 — CINCINNATI AT GREEN BAY  
October 17 — CHICAGO BEARS AT MILWAUKEE  
October 21 — CHICAGO CARDINALS AT GREEN BAY  
October 28 — GREEN BAY AT CHICAGO BEARS  
November 4 — GREEN BAY AT BOSTON  
November 11 — GREEN BAY AT NEW YORK GIANTS  
November 18 — CHICAGO CARDINALS AT MILWAUKEE  
November 25 — GREEN BAY AT DETROIT  
November 29 — GREEN BAY AT CHICAGO CARDINALS  
December 2 — GREEN BAY AT CINCINNATI  
December 9 — GREEN BAY AT ST LOUIS (Tentative)

BEFORE AND AFTER GAMES

— MEET AT —

HARRY'S BAR

TABLES AND BOOTHS FOR LADIES

HARRY LEVITAS

209 PINE ST.

ADAMS 3354

(TWO DOORS OFF WASHINGTON ST.)

Atheletic Supplies &  
Fishing Tackle

Guns Ammunition &  
Hunting Clothing

Compliments of

Bertrand's Sport Shop

106-108 N. Washington St.

Green Bay, Wis.

Wisconsin's Largest Sporting Goods Store  
We Completely Equip the Green Bay Packers

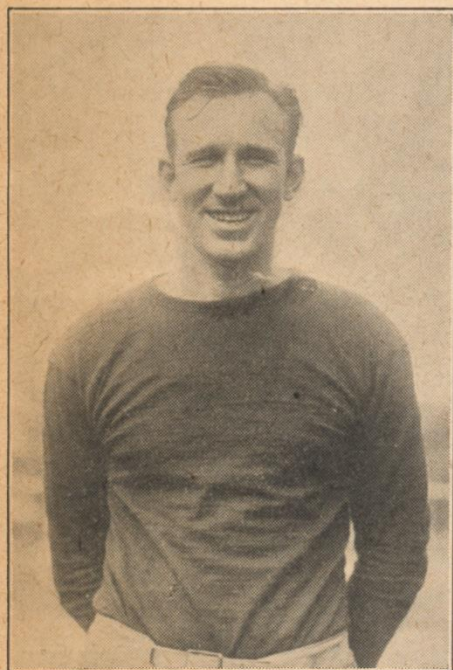
Riding Boots, Breeches &  
Sport Clothing

McGregor Golf Clubs  
Bicycles



# HOCHGREVE BREWING CO.

MAKERS OF  
**Quality Beer**  
**PHONE ADAMS 361**



**ARTHUR BULTMAN**

Center

Red did his early snapping-back for West high, and then continued his stellar play at Marquette University, where he served as varsity captain one season. He is well known and highly popular around Green Bay. After graduation Bultman went to the Brooklyn Dodgers and played fine football for one complete season. Before the next season rolled around he affixed his name to a Packer contract, and is now playing his third year with the Bays.

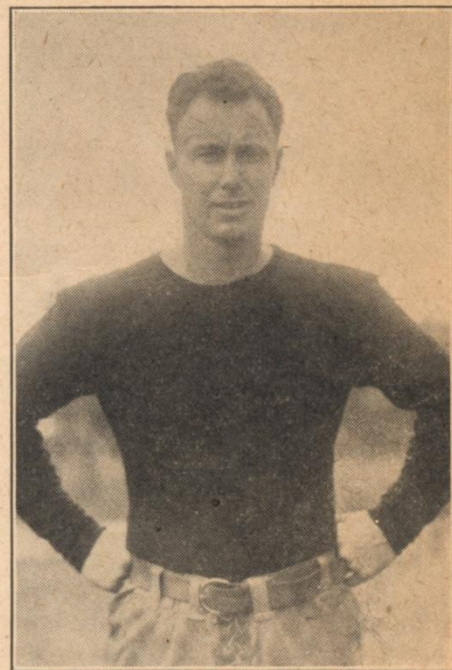
## CHEVROLET

ONLY  
LOW PRICED CAR  
IN THE WORLD WITH  
**Fully-Enclosed  
Knee Action**

Drive it only 5 miles and you  
will never be satisfied with any  
other low priced car.

**Bogda Motor Co.**

415 Main St.      Howard 32



**HENRY BRUDER**

Halfback

"Hank" is the pile-driving backfield ace who has been making a name for himself among the National leagues' best backs, since his graduation from Northwestern University. While at the Wildcat school Bruder was beset by a long series of tough breaks, which earned him the nickname of "Hard Luck Hank," but he still wears his No. 13 on his Jersey, and has outlived his jinx in the professional game. He is starting his fourth year with Green Bay, and is rated one of the hardest hitting backs on the Packer squad. He is a year-around resident of Green Bay.

## BRUDER

**Tire & Battery Shop**

SIBERLING TIRES AND  
NATIONAL BATTERIES

435 Main Street  
Green Bay, Wis.  
**PHONE ADAMS 4066**



# PRINTING IS OUR BUSINESS

*and we pride ourselves  
on doing it well!*

## COMMERCIAL PRINTING COMPANY

*One of the Largest Printing and Advertising Establishments North of Milwaukee*

705-707 S. Broadway

GREEN BAY, WIS.

Phone Adams 443

### National Professional Football League Schedule

SUNDAY, SEPTEMBER 9

Cincinnati at Pittsburgh

SUNDAY, SEPTEMBER 16

Philadelphia at Green Bay  
Boston at Pittsburgh

SUNDAY, SEPTEMBER 23

Cincinnati at Chicago Cardinals  
New York at Detroit  
Chicago Bears at Green Bay

WEDNESDAY, SEPTEMBER 26

(Night Game)

Philadelphia at Pittsburgh

SUNDAY, SEPTEMBER 30

New York vs. Green Bay  
at Milwaukee  
Boston at Brooklyn  
Chicago Cardinals at Detroit  
Chicago Bears at Cincinnati

WEDNESDAY, OCTOBER 3

(Night Game)

New York at Pittsburgh

SUNDAY, OCTOBER 7

New York at Boston  
Pittsburgh at Philadelphia  
Chicago Cardinals at Cincinnati  
Detroit at Green Bay  
Chicago Bears at Brooklyn

WEDNESDAY, OCTOBER 10

(Night Game)

Chicago Bears at Pittsburgh

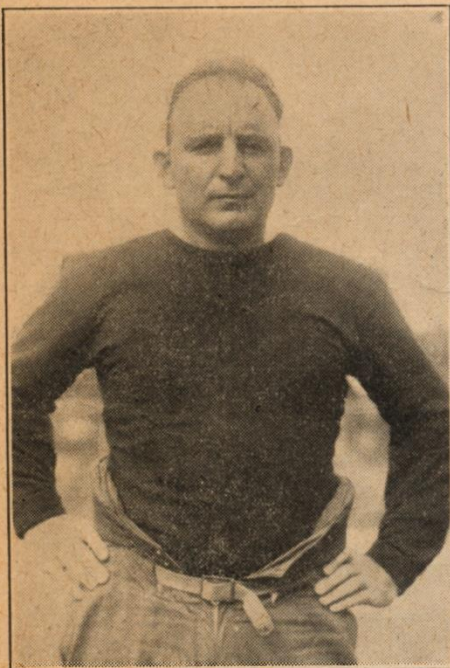
SUNDAY, OCTOBER 14

Brooklyn at New York  
Detroit at Philadelphia  
Cincinnati at Green Bay  
Chicago Cards. at Chicago Bears  
Pittsburgh at Boston

WEDNESDAY, OCTOBER 17

(Night Game)

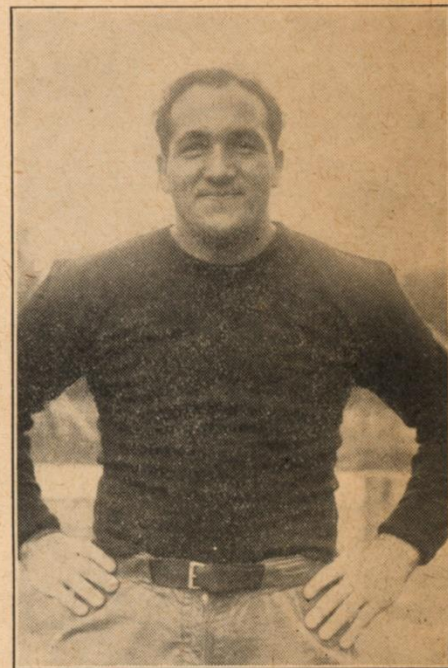
Boston at Detroit  
Green Bay vs. Chicago Bears  
at Milwaukee



**CLAUDE PERRY**

#### Tackle

Green Bay's hard fighting tackle, who performs without benefit of headgear, has started his eighth season with the Packers, giving him, with Lavvie Dilweg, seniority rights on the squad. Ever since he left Alabama University, where he played 3 years of varsity football. Perry has been with the Packers, excepting only one-half season, in 1932, when he played with the Brooklyn Dodgers. Perry's style of line play is aggressive, and his experience makes him one of the most dependable men on the team.



**CHARLES GOLDENBERG**

#### Fullback

"Buckets" to everyone who follows professional football, Goldenberg is one of the riding stars of the game. He broke in with the Packers last year as more or less of an experiment, but was a fixture before the season had progressed more than a few weeks. He was the highest scoring man on the Green Bay squad last season, pushing over the last chalk line both on line smashes and after receiving passes. He played two years with the University of Wisconsin, handling almost every position on the team, and makes his home in Milwaukee.



For Health, Energy  
and Endurance

DRINK

*Verifine*

Perfectly Pasteurized  
Milk

## Green Bay Shoe Repairing Co.

Shoes Repaired While You  
Wait or Called For and  
Delivered

Phone Adams 534  
214 Cherry St.  
Green Bay

## THE STILLER CO.

210-212 Cherry St.

Kodaks  
Music  
Birds and  
Supplies

# General Duties of Officials

## GENERAL

The officials of the game shall be a referee, and umpire, a linesman and a field judge.

All officials have concurrent jurisdiction over fouls committed by players or others and shall report these to the referee, who shall be the final judge in the event of conflict in opinion or testimony and shall enforce the proper penalties.

All officials are expected to co-operate in facilitating the conduct of the game and in the enforcement of the rules. Field captains only may appeal to the referee, and then solely on questions of interpretation of the rules. They are not allowed to question the jurisdiction of any particular official or to argue questions of fact.

## REFEREE

The referee shall have general oversight and control of the game. He shall be sole authority for the score, sole judge of forfeiture of the game under the rules, and his decision upon all matters not specifically placed under jurisdiction of other officials shall be final.

It is the duty of the referee to see that the ball is properly put in play and to judge of its position and progress.

Previous to the start of the game, the referee shall see that the field is properly marked as indicated in the rules. He shall be sole judge as to whether the ball offered for play is in compliance with specifications.

Prior to each kickoff, and in every instance when time has been called, the referee shall make sure that the other officials are prepared and he shall then ascertain from each field captain that his team is ready before allowing the ball to be put in play.

In case a foul has been declared the referee, before enforcing the penalty, shall explain the decision and the options (if any) which belong to the field captain of the offended team.

## UMPIRE

The umpire shall have primary jurisdiction over the equipment, conduct and position of the players, and the legality of substitutions.

He shall use a horn when indicating that a foul has been committed, but play shall continue until the ball has been declared dead by the referee.

He shall assist the referee in decisions involving possession of the ball and interference in connection with the catching, securing or possession of the ball after it has been advanced beyond the line of scrimmage.

## LINESMEN

Under supervision of the referee, the linesman shall mark the progress of the ball.

He shall have primary jurisdiction over tripping of players after a kick or forward pass, encroachment upon the neutral zone, and players ahead of the line of scrimmage when the ball is snapped.

If the ball goes out of bounds on the side of the field occupied by him, he shall mark the point where it crossed the side line.

He shall mark the position of the ball on each down and check the number of the down.

He shall provide himself with assistants, who shall remain outside the field of play.

Under supervision of the linesman, the assistants shall measure distances gained or lost and for this purpose shall be provided with two rods about six feet in length and connected at their lower ends by a stout cord or chain 10 yards in length.

## FIELD JUDGE

The field judge shall have primary jurisdiction over the timing of the game and for this purpose he shall use a stopwatch.

The watch shall be started only when the ball is actually put in play and it shall be stopped immediately:

- (a) When the ball goes out of bounds.
- (b) When a forward pass becomes incomplete;
- (c) When the ball has been declared dead after a foul has been called.
- (d) When a fair catch, touchdown, touchback, safety or goal has been made.
- (e) When play is for any reason suspended by the referee.

He shall notify the referee promptly when time has expired at the end of each quarter, and he shall notify both field captains, through the referee, of the time remaining for play not more than ten minutes nor less than five minutes before the end of each half.

He shall assist the referee in decisions involving possession of the ball and interference in connection with the catching, securing or possession of the ball after it has been advanced beyond the line of scrimmage.

If the ball goes out of bounds on the side of the field occupied by him, he shall mark the point where it crossed the side line.



No Trouble - No Fuss - to prepare

**Valley Farm**  
REIMERS MEAT PRODUCTS

READY-TO-EAT MEATS

100% Pure Pork Sausage

Sliced Canadian Bacon

ALWAYS PLEASE

**Reimer's Meat Products**

GREEN BAY, WISCONSIN

# CLUB GRENWICH

DANCING AND ENTERTAINMENT

Your Favorite Drinks Mixed Your Favorite Way  
No Cover or Minimum Charge

Under Management of  
**BILL and VI MILLER**

## Schedule Continued

### SUNDAY, OCTOBER 21

Brooklyn at Detroit  
Philadelphia at Boston  
Pittsburgh at New York  
Chicago Cardinals at Green Bay  
Cincinnati at Chicago Bears

### SUNDAY, OCTOBER 28

Philadelphia at New York  
Chicago Cardinals at Boston  
Detroit at Cincinnati  
Pittsburgh at Brooklyn  
Green Bay at Chicago Bears

### SUNDAY, NOVEMBER 4

New York at Chicago Bears  
Green Bay at Boston  
Cincinnati at Philadelphia  
Chicago Cardinals at Brooklyn  
Pittsburgh at Detroit

### SUNDAY, NOVEMBER 11

Green Bay at New York  
Pittsburgh at Cincinnati  
Chicago Bears at Boston  
Brooklyn at Philadelphia  
Detroit at Chicago Cardinals

### SUNDAY, NOVEMBER 18

Green Bay vs. Chicago Cardinals  
at Milwaukee  
Cincinnati at Detroit  
Boston at Philadelphia  
Chicago Bears at New York  
Brooklyn at Pittsburgh

### SUNDAY, NOVEMBER 25

Boston at New York  
Philadelphia at Brooklyn  
Chicago Bears at Chicago Cards  
Green Bay at Detroit

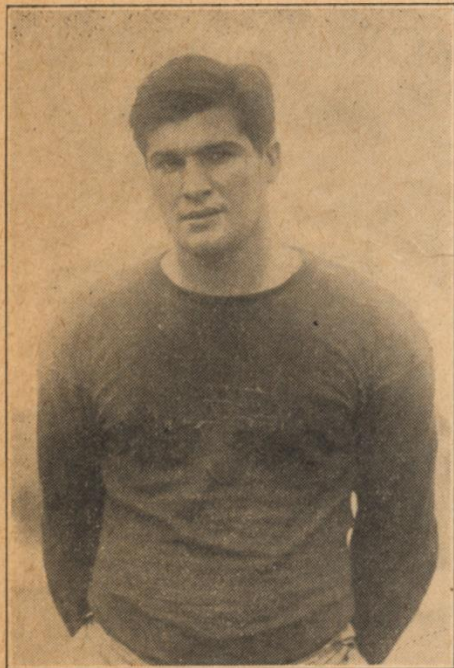
### THURSDAY, NOVEMBER 29

(Thanksgiving Day)

New York at Brooklyn  
Chicago Bears at Detroit  
Green Bay at Chicago Cards

### SUNDAY, DECEMBER 2

Green Bay at Cincinnati  
Brooklyn at Boston  
New York at Philadelphia  
Detroit at Chicago Bears.



**JOSEPH LAWS**

Quarterback

Awarded the Big Ten trophy last season as the conference football player of most value to his team, Laws is rated one of the most important newcomers to the Packer squad. He starred at Iowa University, winning a national recognition as a fine passer, good kicker and an all-around able field general.

He is starting his first year with the Packers.



**AUGUST MICHALSKE**

Guard

"Mike" is another Packer who is a year around resident of Green Bay. He is one of the real veterans of professional football, as he is playing his ninth season in the post-graduate sport, and his sixth season with the Packers. Michalske's consistent and ofttimes brilliant line play has earned him his title, "The Guard of the Century," one which he well deserves. He got his start at Penn State, playing 3 years of varsity, and then joined up with C. C. Pyle's New York Yankees for three seasons before coming to Green Bay.



**EVERGREEN**  
SUMMIT TISSUE



Embossed for Softness

**JACK'S**  
Towel and Linen  
Supply

COMPLETE  
TOWEL  
SERVICE

918 Porlier Street  
Adams 771



Complete Line of  
COAL, FUEL WOOD  
and  
BUILDING MATERIAL

1923 Main St. Adams 5353

AFTER THE GAME  
DRINK A

Du Bouchett  
Sloe Gin  
Sour

DISTRIBUTED BY

**E. L. RIDGLEY  
COMPANY**

315 DOUSMAN ST.

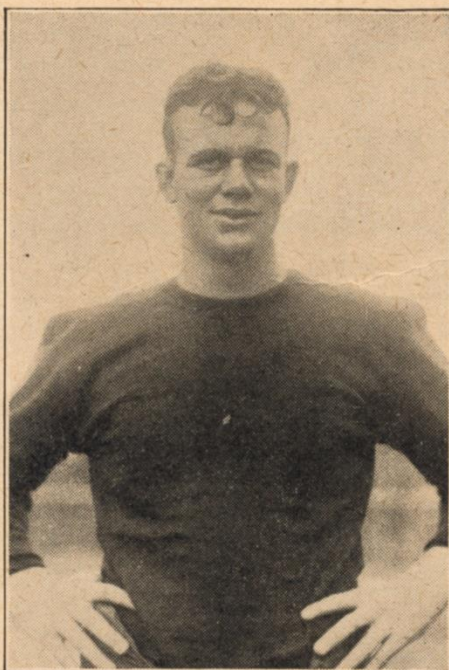
PHONE

Adams 1231-W

**J. C. Penney Co.**

FOR QUALITY  
MERCHANDISE  
AT LOW PRICES

208 North Washington St.



**ROBERT JONES**

Guard

Bobby is a Hoosier who did lots of fine football playing with Indiana University, getting considerable all-American mention. He used his 216 pounds to great advantage in the All-Star-Bear game at Chicago last August, being considered with Laws, Schwammel and Bernard outstanding on the all-Star team. He has looked great since joining the Packers—his first season in pro football.

DRUGGIST TO THE  
PACKER'S  
THE  
**SCHWEGER  
DRUG STORES**

100 N. BROADWAY

100 N. ADAMS

Prescription and Fountain  
Service

GREEN BAY'S NEWEST  
DINE & DANCE CABARET

**RIVIERA**

Direction of  
THEO. "PAT" SELISSEN  
DOC SCOTT'S MUSIC

— Big Floor Show —

Phone De Pere 43

**STEEN  
PAPER CO.**

Mill Distributors of

High Grade Brands

114 N. BROADWAY

Phone Adams 1106

Green Bay, Wis.



# Old Imperial

The Aristocrat of Beers

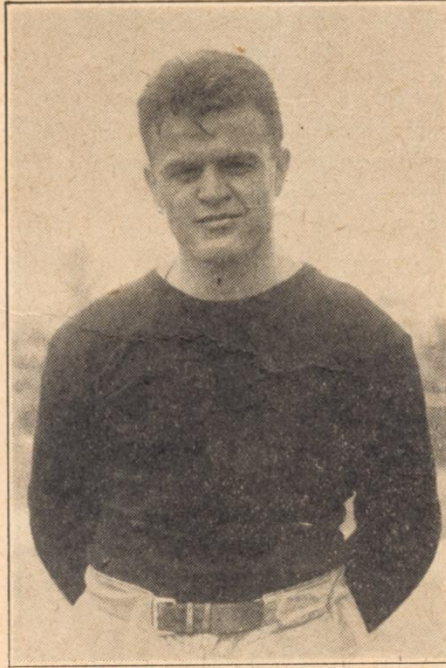
RAHR-GREEN BAY BREWING CORP.



**ALFRED ROSE**

**End**

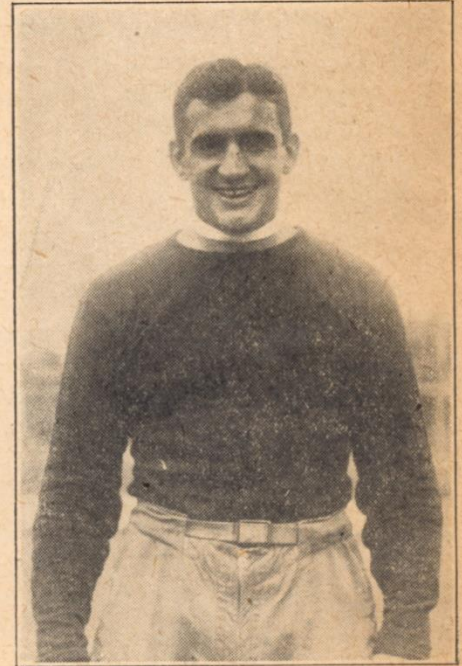
A southern contribution to the Packers is Al Rose, formerly of the University of Texas, who is playing his fourth year of professional football and his third year with the Bays. After graduation Rose forgot about his three years with the Texas varsity and hooked up with Providence, where his work quickly attracted attention of the National League clubs, the Packers landed him, and the lanky end has been a mainstay of the Bay line ever since. He is a year round resident of Green Bay.



**ROLLIE HALFMAN**

**Halfback**

A Fox River valley product is Halfman, as the new Packer is a resident of Fond du Lac. He did his collegiate playing at Marquette University, captaining the Golden Avalanche last season. Halfman played baseball with Wisconsin Rapids in the State League last year and is well known in Green Bay. It's his first season in pro football.



**ROBERT MONNETT**

**Halfback**

One of the brightest spots in last year's somewhat drab Packer season was the brilliancy of Bobby Monnett, the stocky speed king of the Green Bay backfield. With a stronger team behind him, Monnett is slated for even greater achievements in 1934. He played under Jimmy Crowley at Michigan State, was captain of the Spartans during one of his three years at East Lansing, and lives at Bucyrus, Ohio.



*Follow the "Packers" for all games thru--*  
**— Wadhams Oil Sport Reports —**

*23 Witte*

*S. Dakota State*

TUNE IN  
**WTMJ**

Milwaukee Journal Station  
 Russ Winnie Broadcasting

Also University of Wisconsin Games and Wadhams Sport Flash

**GREEN BAY PACKERS**

11	Grove	Michigan State	182	Quarterback
17	Bultman	Marquette	199	Center
19	Norgard	Stanford	193	End
20	Casper	Texas Christian	175	Quarterback
24	Michalske	Penn State	210	Guard
25	Evans	Texas Christian	219	Guard
26	Butler	Michigan State	222	Center
30	Barrager	Southern California	202	Center
31	Kurth	Notre Dame	200	Tackle
37	Johnston	Miami	190	Fullback
38	Laws	Iowa	185	Quarterback
42	Monnett <i>Bob</i>	Michigan State	180	Halfback
43	Peterson	Texas	211	End
45	Herber	Regis	203	Halfback
46	Gantenbein	Wisconsin	194	End
47	Bruder	Northwestern	196	Halfback
48	Hinkle	Bucknell	199	Fullback
49	Rose	Texas	202	End
50	Perry	Alabama	211	Tackle
51	Goldenberg	Wisconsin	211	Fullback
53	Schwammel	Oregon State	220	Tackle
54	Jorgenson	St. Mary's	200	Tackle
55	Jones	Indiana	216	Guard
56	Wunsch	Notre Dame	217	Guard
57	Siebold	Wisconsin	232	Tackle

Referee—Bobbie Cahn, Chicago.  
 Umpire—Gordon McNutt, Milwaukee  
 Head Linesman—James Keefe, Holy Cross  
 Field Judge—Wilfred Smith, Chicago.

**HOTEL  
 NORTHLAND**

HEADQUARTERS FOR  
 FOOTBALL PLAYERS AND  
 THEIR FRIENDS

Rates Within Reach  
 of Everyone

TAP ROOM IN CONNECTION

A VISIT TO COFFEE SHOP  
 ALWAYS SATISFIES

A SCHROEDER HOTEL

**PLATTEN BROTHERS**

FOUNDED 1863

Are Green Bay's Leading Distributor of  
 Food and Drink

Tune In The Platten Hour On WHBY  
 Every Sunday Noon At 12:30  
 For The Latest Football Dope

**Standard Service**

AT ALL

**Standard Oil Stations**



# AYRES IN "Servants' Entrance"

## NEED A LOAN?

Come to Money Corporation

You can borrow here on your good reputation—get the cash you need NOW—and repay the loan in convenient amounts from your wages or monthly income.  
COME IN TODAY AND TALK IT OVER



230 E. WALNUT ST.

ADAMS 602

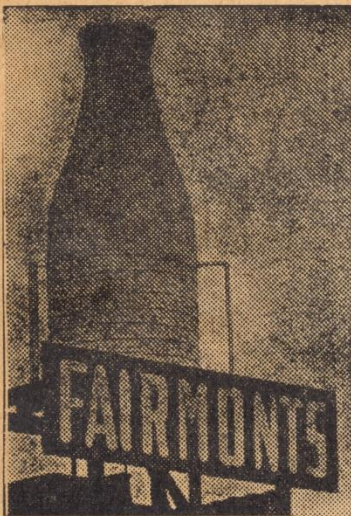
While You're Downtown Have Your Car Serviced At

## EISENMAN & GAIE

WILLARD BATTERIES — GOOD YEAR TIRES  
AUTO ELECTRICIANS & TIRE REPAIRING  
SINCLAIR GAS AND OILS — GREASING  
PHILCO AUTO RADIOS

WALNUT AT MADISON

Open Daily 7:30 A.M. to 10:00 P.M.



THE SIGN OF

## Quality Milk

**The Fairmont Creamery Company**

ADAMS 6000

## PHILADELPHIA EAGLES

2	Pilconis	Temple .....	192	End
3	Kirkman	Washington & Jefferson.....	190	Back
5	Kresky	Wisconsin .....	220	Guard
8	Hajek	Northwestern .....	210	Center
9	Zyntell	Holy Cross .....	200	Guard
10	Leach	Northwestern .....	195	Back
11	Knapper	Ottawa, Kansas .....	190	Back
12	Matesie	Pittsburgh .....	195	Back
13	Kenneally, Capt.	St. Bonaventure .....	192	End
14	Hanson	Temple .....	192	Back
15	Willson	Pennsylvania .....	195	Guard
17	Carter	Southern Methodist .....	203	End
18	Wiener	Muhlenberg .....	180	Back
19	Leonard	Notre Dame .....	204	Back
20	Lepski	Temple .....	200	Center
21	Cuba	Pittsburgh .....	210	Tackle
22	Storm	Santa Clara .....	196	Back
23	Urevig	North Dakota .....	210	Tackle
24	Lackman	Haverford .....	186	Back
25	Gudd	Temple .....	215	End
26	Roberts	Georgia .....	210	Back
27	Dempsey	Bucknell .....	220	Tackle
28	Turnbow	Mississippi .....	217	Tackle
30	Milan	Austin, Texas .....	220	Guard
31	MacMurdo	Pittsburgh .....	215	Tackle

## Green Bay Glass & Paint Co.

Chas. Mathys

Louis Mathys

## GLASS OF ALL KINDS

BERRY BROS.

PAINTS — VARNISHES — ENAMELS —  
LACQUERS

113 S. Broadway

Phone Adams 623



A Complete Line of Wines and Liquors

FEATURING

### WISCONSIN CLUB

A Smooth Mellow Bourbon

### WISCONSIN LIQUOR COMPANY

Wholesale & Retail

215 PINE ST.

Phone Adams 583



# ANNOUNCEMENT

## Keep Your Programs

The ORWANT JEWELERS have again kindly donated a Ladies' \$100 Diamond Ring to the Green Bay Football Corporation to be given to the holder of a lucky Program. All programs are numbered and should be held until the last game of the season when a drawing will be made during the half time period. The number of the lucky program will then be announced.

The holder of the lucky program can then present it at the Packer Ticket Office, Columbus Club, and receive a letter of indentification to the Orwant Jewelers to receive the ring.

## OFFICIAL ARM BANDS

The National Professional Football League is taking another step toward making the game of football more popular and clear to the public by having the different officials marked by arm bands. This has a two-fold purpose—to the fan to give his position and direct part in each play—to the players for reporting time, proper decisions by the different officials, etc.

The colors designating the different officials are as follows:

Referee .....	White on Blue
Umpire .....	Gold on Green
Head Linesman .....	Orange on Black
Field Judge .....	Blue on Red

NEXT SUNDAY, SEPTEMBER 23

GREEN BAY PACKERS vs. CHICAGO BEAR

KICKOFF—2'O'CLOCK

The Chicago Bears football team needs no build-up. Many columns of publicity have been published in the past and the record of the Bears' speaks for itself—World Champions.

Seats for this game are just about sold now and no doubt there will be standing room only next Sunday. Of special interest to Green Bay Football fans will be the appearance of Wayland Becker, Green Bay lad, who starred at Marquette and is now burning up big league pro ball. Harold "Red" Grange will again be seen in action with the Champs. Owner George Halas of the Bears stated last Friday that he would take no chances with the fighting Bays, so it again looks like a scrap to the last whistle..

Call your ticket office now. See list of offices on page 19 or call Adams 6180, Packer Ticket Headquarters.



**CARL JORGENSON**

**Tackle**

Outstanding work in last year's East-West contest, caused Coach Lambeau to seek out Jorgenson. He played for three years with Slip Madigan's Galloping Giels, of St. Mary's University at Moraga, Calif., and placed high in the recent poll to pick an all-star team to play the Chicago Bears. He is playing his first year of professional football, and is expected to help solve the Packers tackle problem.

CHOICE OF CHAMPIONS

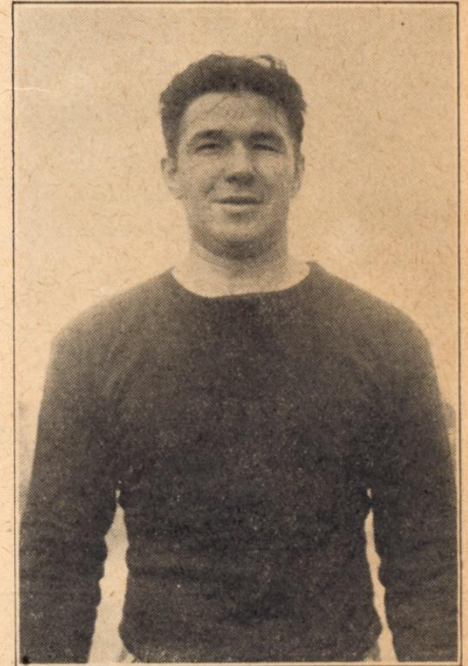
**FIRESTONE  
TIRES**

We Carry a Complete Line of  
Firestone Tires, Tubes, Batter-  
ies, Spark Plugs, Brake Linings  
and Accessories

**RALPH'S  
TIRE SHOP**

1023 MAIN STREET

PHONE ADAMS 700



**ARNOLD HERBER**

**Halfback**

Another iron man of the Packer back-field is Arnie Herber, who played with West high here, captained the University of Wisconsin freshman one season, and played at Regis college in Colorado before joining the Packers. His reputation as passer and kicker is wide, particularly through the eastern swing of the National league, where Herber annually plays sensational football. He is considered one of the best passers on the squad, is playing his fourth season, and lives in Green Bay all year.



Green Bay's Pioneer Gift Shop

## MASSOPUST

ART — SIGNS — GIFTS

Opposite Orpheum Theatre

AFTER THE GAME  
VISIT

## Becher's Liquor House

The Most Complete Line of Wines  
& Liquors in Northeastern  
Wisconsin

120 Main St. Green Bay  
Phone Adams 5248

Consult Your Agent As  
You Would Your  
Lawyer

## Murphy Insurance Agency, Inc.

Phone Howard 1080  
306 Cherry St.  
Green Bay, Wis.

Our Insurance Survey and  
Analysis Will Cost You Nothing



MILTON GANTENBEIN

End

Milt is a badger product who has used a sturdy build and plenty of ability to good advantage in professional football. He captained the University of Wisconsin squad during one of his three years of varsity football and is now playing his fourth season with the Packers. He is a fine blocker, and a great man to have in the game when the going is tough. He lives in Green Bay all year around.



FROM THE SPEEDWAY  
COMES THEIR STAMINA

FROM THE SKYWAY  
COMES THEIR STYLE

## BUTH MOTORS

220 No. Jefferson St.

## BOSSE'S NEWS DEPOT

Cor. Adams and Cherry



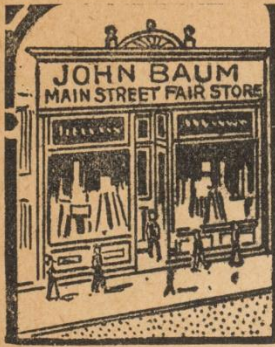
JOSEPH KURTH

Tackle

Joe cracked into professional football with the Packers last season, after three sensational years at Notre Dame, during which he won all-American honors. He was one highly touted professional star who lived up to advance notices in the pro game. Kurth's home is at Madison, but he is seen plenty around Green Bay, and is starting his second season with the Packers. His line play is highly aggressive and he is expected to see plenty of service.



Since 1634 People Have Been Coming  
to Green Bay



Since 1888 They've  
Been Coming to

**BAUM'S**

The City's Oldest  
Department Store

## Orwant Jewelers

Diamonds - Watches  
& Jewelry

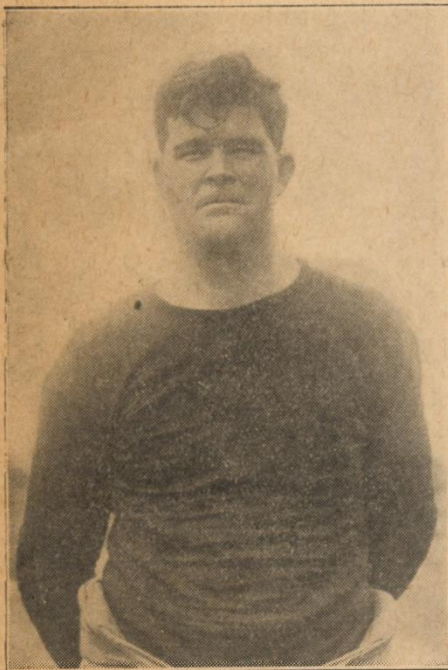
Convenient Terms

300 N. Washington St.

On the Corner

Telephone Howard 2593

GRAND PRIZE—Ladies' Diamond  
Ring—Value \$100



**FRANK BUTLER**

Center

This Spartan giant is another Michigan State ace to win a home in Green Bay. He weighs 222 pounds and is a power on offense and defense. This is Butler's first season in professional football, but he gives indication of a great gridiron career.



**AL NORGDARD**

End

An end for three years at Leland Stanford university, Norgard joined the Packers with a fine recommendation by the old maestro of the pro grid game, Ernie Nevers, now coaching at his Alma Mater. Norgard burned up the coast for 3 years with Stanford, and is now playing his 1st season in professional football. He weighs 193 pounds.



**EARL WITTE**

Halfback

This star of the Gopher state comes to Green Bay from Gustavus Adolphus,—where he was considered one of the finest athletes ever to be graduated from the Minnesota school. His passing and general backfield play has been outstanding, and he uses his 187 pounds to fine advantage. He left college in June, and is just starting his professional career.



# SCHAUER & SCHUMACHER

FURNITURE :-: FUNERAL DIRECTORS

Corner Adams and Walnut

FUNERAL HOME 109 N. ADAMS ST.

Phone Adams 567-W

Green Bay, Wis.

# WINTERKING COAL

AMERICA'S FINEST BITUMINOUS COAL

Ask Your Dealer

## The Cleveland-Cliffs Iron Co.

GREEN BAY, WIS.

Docks: Green Bay, Wis., Escanaba, Mich.  
Port Huron, Mich.



**LES PETERSON**

**End**

This big end is the tourist of the National league, but seems to have found a permanent home in Green Bay. After playing three years of varsity football at Texas, Peterson went to Portsmouth for one season, and then switched to Green Bay. He played most of the year with the Packers, joining Staten Island at the end of the season. Last year he was with the Brooklyn Dodgers. This is his fourth year in pro football.

Compliments of

# Green Bay Food Company

GREEN BAY, WIS.



**CLARK HINKLE**

**Fullback**

Considered one of the toughest men in the professional gridiron game, Hinkle has been a mainstay of the Packer backfield for the past two seasons, and is now playing in his third year with the Packers. Fans will never forget his bone-crushing collision with Bronko Nagurski of the Chicago Bears last year, when the big Nag came off second best. Hinkle tore through the Eastern Intercollegiate conference with Bucknell, and was immediately snapped up by the Packers. His home is in Toronto, Ohio.

# VAN'S HARDWARE

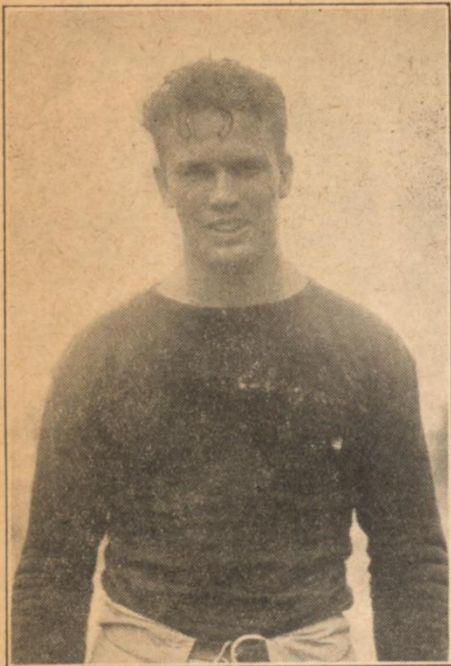
Exclusive Agency

ESTATE HEATROLAS

**S**AVES  
**S**ERVES  
**A**TISFIES

408 Dousman Street  
Adams 848-W





RIGHT

**JOSEPH PLIHAL**

**Tackle**

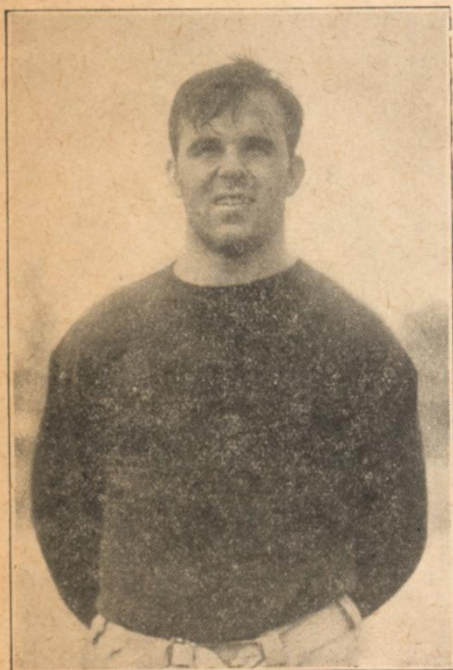
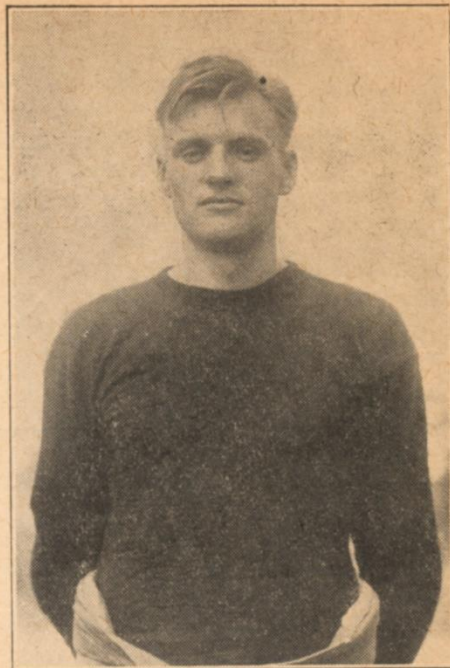
A fighting tackle from South Dakota State college is Plihal, just breaking in with the Packers. He has looked good in practice, is big and strong and anxious to work. He is rated an outstanding prospect in South Dakota, and hopes to carry on with professional football.

LEFT

**CHARLES CASPER**

**Quarterback**

Completing with Laws and Grove the Packer list of Quarterbacks, Casper comes to Green Bay from Texas Christian University. He is big and fast, and is rated a highly capable field general. He was a team mate of Lon Evans at TCU, and comes highly recommended by several Southwestern conference coaches.



**CHESTER JOHNSTON**

**Fullback**

Johnson is an Appleton boy who tried out with the Packers, wasn't accepted, and then went south to make a great reputation for himself with the St. Louis Gunners—a reputation so good that the Packers hastened to bring him back to Wisconsin. He was the terror of the valley in his high school days, and did some gridiron work at Miami University. Chet, also called "Swede" is big and tough and is starting his third year of professional football.

**Popular Choice!**



**to MILWAUKEE CHICAGO**

**No. 10**

Lv. Green Bay Daily . . . 7:00 a. m.  
Ar. Milwaukee . . . . . 9:50 a. m.  
Ar. Chicago . . . . . 11:30 a. m.  
Coaches—Parlor Car from Milwaukee

**The Copper Country Limited**

Lv. Green Bay Daily . . . 1:35 a. m.  
Ar. Milwaukee . . . . . 5:25 a. m.  
Ar. Chicago . . . . . 7:45 a. m.  
Dining car serving breakfast; coaches.  
Sleeping car (open for occupancy at 9:30 p. m.) **No. 46**

Lv. Green Bay Ex. Sun. . . 12:30 p. m.  
Ar. Milwaukee . . . . . 3:50 p. m.  
Ar. Chicago . . . . . 5:45 p. m.

Buffet parlor car—coaches

**To Northern Michigan**

The Copper Country Limited leaves Green Bay 10:30 p. m. The Iron Country Limited leaves Green Bay 3:10 a. m.

Green Bay Ticket Office  
Phone Adams 866

E. D. Crim, City Pass. and Tkt. Agent

**The Milwaukee Road**

**H. DANZ**

320 Main St. — Adams 508

**Factory Distributors  
PAINTS — ROOFING  
ROOF COATINGS**

**See Our Dealers**



**CHAMP SIEBOLD**

**Tackle**

Seibold is another Fox River valley product, making his home at Oshkosh. Coach Clarence Spears at Wisconsin University regarded him as one of the finest line prospects he has ever seen, and now he is testing his ability with the cream of the nation on the gridiron. He weighs 232 pounds and can dish it out and likes to take it.

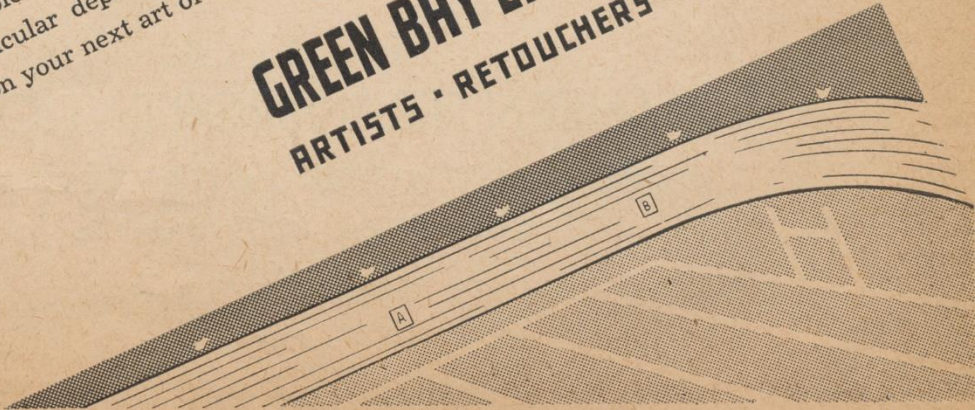




# All-round Ability

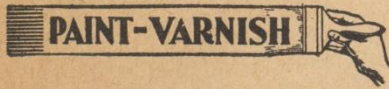
... that's the secret of every perfectly functioning football machine. . . . and, it is attained by having each man handle his own individual position flawlessly. In our organization, too, we attribute our all-round ability to the complete knowledge every craftsman has of his own particular department. Let us demonstrate this ability on your next art or engraving requirement.

**GREEN BAY ENGRAVING CO.**  
ARTISTS • RETOUCHERS • ENGRAVERS





# GOOD PAINT & VARNISH



Mautz Good Paints and Varnishes excel in durability and covering qualities and each finish is designed to do that particular job with less effort, less material, more economy and the assurance of better results, greater beauty and longer wear. They take fewer gallons and cost less per job.

## MAUTZ PAINT & GLASS CO.

MANUFACTURERS

Branch Offices and Warehouse

110 S. WASHINGTON ST.

GREEN BAY, WIS.

## FINAL 1933 NATIONAL LEAGUE STANDINGS

### WESTERN SECTION

TEAMS	W.	L.	T.	Pct.
CHICAGO BEARS	10	2	1	.833
PORTSMOUTH	6	5	0	.545
GREEN BAY	5	7	1	.418
CINCINNATI	3	6	1	.333
CHICAGO CARDS	1	9	1	.100

### EASTERN SECTION

TEAMS	W.	L.	T.	Pct.
NEW YORK	11	3	0	.786
BROOKLYN	5	4	1	.556
BOSTON	5	5	2	.500
PHILADELPHIA	3	5	1	.375
PITTSBURGH	3	6	2	.333

CHICAGO BEARS Won the Championship by Defeating the NEW YORK GIANTS

In the Play Off Game — Score CHICAGO BEARS 23—NEW YORK GIANTS 21

## NORTHERN TRANSPORTATION CO.

OPERATING SYSTEMATIZED MOTOR EXPRESS SERVICE

General Offices: 100 W. Walnut St.

GREEN BAY, WIS.



# PACKER TICKET OFFICES

Main Ticket Office—Columbus Community Club—Green Bay—Phone Adams 6180.

## GREEN BAY

Congress Billiards  
Schweger's Drug Store  
Dashnier's Cigar Store  
Belleau Drug Store  
John Synnes Tavern  
O'Brien's Tavern  
Harry's Bar  
Ford Hopkins Drug Store  
Gill's Tavern  
N. S. Community Club

NEENAH—"Mulligan" Seroogy, Postal Telegraph  
WAUSAU—Pope Bros.,—Red Top Cab.  
APPLETON—Pettibones  
MANTOWOC—J. J. Stangle Hdw. Co.  
DENMARK—Schuster Construction Co.  
OCONTO—Ullspergers Drug Store  
ESCANABA—Asp's News Stand  
PESHTIGO—Seeger's Drug Store  
IRON MOUNTAIN—Carlson's News Stand.

## OUT-OF-TOWN

MARINETTE—Postal Telegraph Office, Hotel Marinette.  
WISCONSIN RAPIDS—Elk's Club  
CLINTONVILLE—Joe Petcka  
SHAWANO—Stan's News Depot  
MILWAUKEE—Milwaukee Journal  
OCONOMOWOC—Irwin Block  
SHEBOYGAN—Ford Hopkins Drug Store  
FOND DU LAC—Ford Hopkins Drug Store  
BEAVER DAM—Ford Hopkins Drug Store

## Success to You— GREEN BAY PACKERS

Wherever foot-ball's played and followed—and where isn't it?—your illustrious record has added new renown to Green Bay's name.

And it is "North Western's" hope that the season of 1934 will be chalked up as another in your long string of victories.

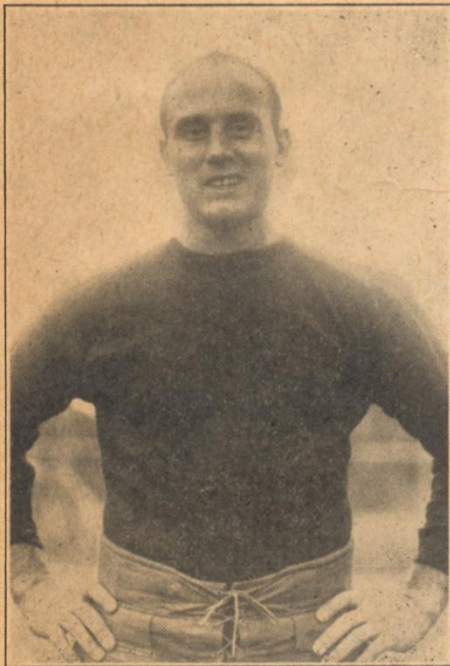
"North Western" goes places, too—in style—providing its patrons fast convenient service and the very finest up-to-the-minute travel comforts.



F. B. Martin, D. F. & P. A.  
M. W. Hollister  
Ticket Agent  
Green Bay, Wis.

2137

### CHICAGO & NORTH WESTERN RY.



**ADOLPH SCHWAMMEL**

Tackle

Schwammel is an all-American collegiate lineman who already has had his baptism of fire in the professional game. He played a brilliant game for the all-Stars against the Chicago Bears at Chicago last August, and is carrying on for the Packers. Schwammel weighs 220 pounds, and starred for three years at Oregon State. He was an almost unanimous all-American selection last year.



**LON EVANS**

Guard

Evans is one of the few rookies who was a standout during his first year in professional football. He played lots of hard football for the Packers last season, and was one of the first to sign up for his second year with Green Bay. Big and strong, Lonnie served for three years on the Texas Christian University varsity, captaining the TCU squad for one season. His home is in Fort Worth Texas.

## GO PACKERS

### Harold's Tavern

Popular Prices All Drinks

PLATE LUNCHESES

BEER 5 & 10c

TABLES AND BOOTHS

NEXT TO THE ORPHEUM

HAROLD REHBEIN, Prop.



# Olson Transportation Company, Inc.

## Overnight Service By Motor Truck

GENERAL OFFICES

and

FREIGHT TERMINAL

200 Mather Street  
Phone Adams 5270-5271  
GREEN BAY, WIS.

2433 West 18th Street  
Phone Monroe 2642-2648  
CHICAGO, ILL.



**ROGER GROVE**

Quarterback

Grove's familiar No. 11 already has become established in the Packer backfield, as the curly-headed Michigan State star is playing in his fourth season with Green Bay. His shifty tactics in returning punts and his excellent ball handling have earned him an enviable reputation with professional signal-callers. Grove played under Jimmy Crowley at the Spartan school, captaining the team one season. He makes his home in Green Bay.

### A FRIENDLY STORE

WHERE QUALITY AND LOW PRICES MEET  
**HILL'S**  
Washington & Pine Streets

Green Bay's Newest  
Department Store

Washington & Pine

### Pankratz Motors

DISTRIBUTORS

**GRAHAM**

Six and Eight

**FIRESTONE**

Tires and Batteries

**REPAIRING**

All Makes of Cars

719 South Broadway

Phone Adams 5611

### Reimer's Transfer & Storage

DISTRIBUTORS OF

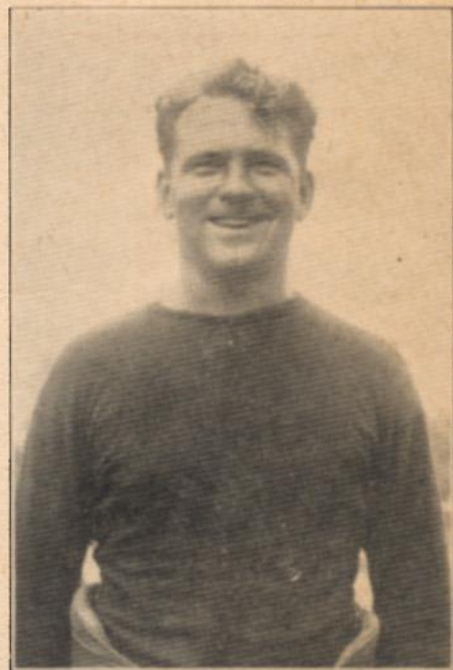
**OLD TOWN LAGER**

And

**Gettleman's Bottle Beer**

1353 Main Street

Phone Adams 2288-W



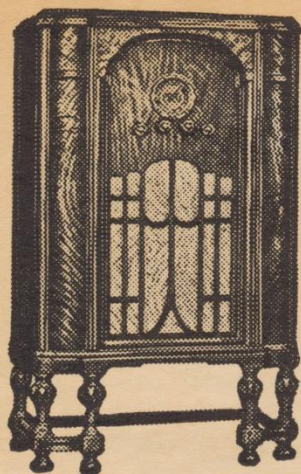
**NATE BARRAGAR**

Center

Barragar's presence in the center of the Packer line has always given stability to the Green Bay defense. He is stocky and powerful, and almost impossible to budge. Nate served with the Trojans of Southern California during his collegiate days, and during the off season operates a sporting goods store at San Fernando, Cal. Barragar joined the Minneapolis Red Jackets in 1930, and hopped to the Frankford Yellowjackets when Minneapolis went on the shoals late that season. He continued with Frankford in 1931, but joined the Packers when Frankford slid under financially. He was with the Bays again in 1932, but dropped out of the pro game last season for business reasons.



PARIS — MADRID — BERLIN — LONDON  
 ENJOY THE THRILL OF FOREIGN RECEPTION PLUS AMERICAN  
 BROADCASTING WITH THE BEAUTIFUL 1935 MODEL



# ATWATER KENT

THREE TUNING RANGES— TWO SPEEDS—TUNING AEROPLANE  
 TYPE ILLUMINATED DIAL—TONE CONTROL—AUTOMATIC  
 VOLUME CONTROL—11-INCH DYNAMIC SPEAKER

The Cabinet is of Extremely Pleasing Appearance

**ONLY \$52.50**

SEE IT ON DISPLAY AT YOUR LOCAL DEALER'S  
 OTHER MODELS \$22.50 AND UP

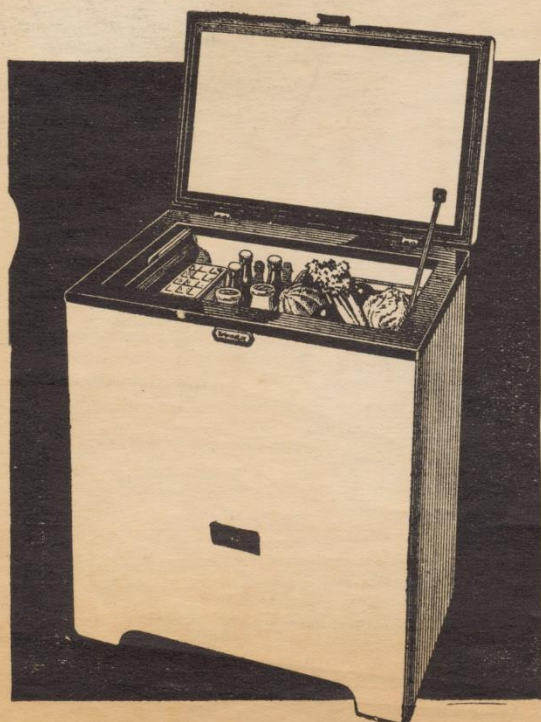
Model 325-E

ONLY \$52.50

## MORLEY-MURPHY CO.

DISTRIBUTORS

QUARTERS	1st	2nd	3rd	4th	Total
<b>PACKERS</b>					
FIRST DOWNS					
<b>VISITORS</b>					
FIRST DOWNS					



**\$81.50 INSTALLED**

A beautiful Electric Refrigerator—powered by the standard Kelvinator mechanism that is used in the higher priced models—built especially for the smaller homes and for small families restricted budgets.

The Kelvin Chest has a temperature selector with eight freezing speeds which is located on the outside of the cabinet within easy reach.

It has a porcelain interior, porcelain table top and stainless porcelain on the bottom of the food compartment. Has two large ice cube trays holding 42 cubes. Insulated with Keltex. Exterior finish is gleaming white Permalain over rust-proofed steel.

See the Kelvin Chest before you buy.

# KELVINATOR

Other Models To Suit Any Purse and Every Requirement.

MORLEY-MURPHY CO.

Distributors



THE  
FOOD PRODUCT

with the

“*Joannes*  
QUALITY”

SIGNATURE

Is Your Guarantee

OF FULL VALUE  
FRESH HONEST PACK  
AND HIGH QUALITY

*Your Neighborhood Grocer Has A  
Complete Stock*