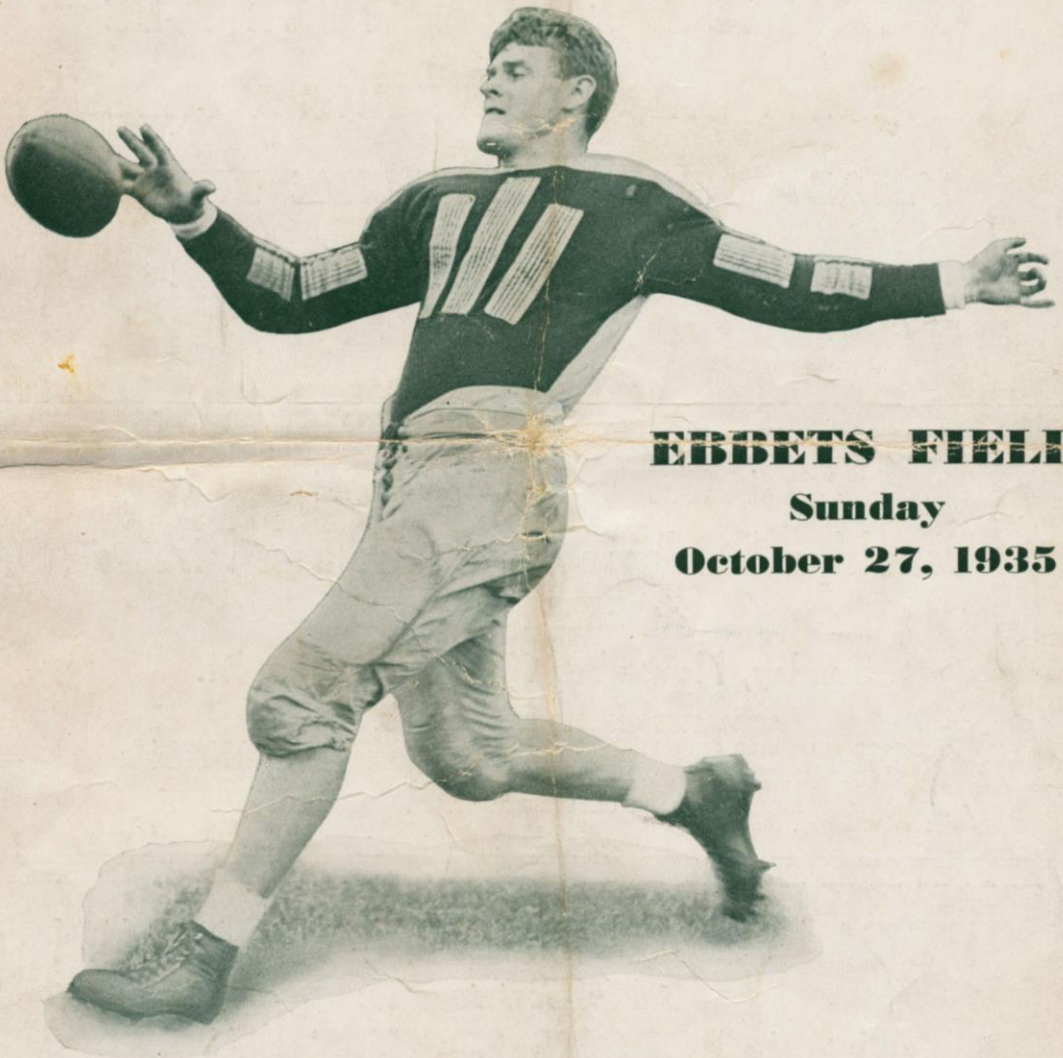


Price 10 cents

BROOKLYN DODGERS
• vs •
PHILADELPHIA EAGLES



EBBETS FIELD

Sunday

October 27, 1935

RALPH KERCHEVAL
Kicking Star of the League

Next Home Game, Sunday, Nov. 10, 1935—Kickoff 2:30 P.M.
AT EBBETS FIELD
BROOKLYN DODGERS vs. PITTSBURGH PIRATES



Canada Dry presents for your enjoyment and good living:

•• **CANADA DRY GINGER ALE**
CANADA DRY'S SPARKLING WATER
CANADA DRY'S LEMON-LIME RICKEY
•• **HUPFEL'S BEER** ••

NEXT HOME GAME

Brooklyn Dodgers vs. Pittsburgh Pirates
At EBBETS FIELD

Sunday, November 10th, at 2:30 P. M.

ADVANCE CHOICE SEATS ON SALE AT

DODGERS FOOTBALL OFFICE,
Eagle Building, Brooklyn.
A. G. SPALDING & BROS. STORES.
JERRY DALTON-KEMP-NOVACK CLOTHES SHOP,
1450 Broadway, New York.

ALEX TAYLOR & CO.,
22 E. 42nd St., N. Y.
DAVEGA STORES.
ADLER SHOE STORES.
and at EBBETS FIELD.

SPECIAL ANNOUNCEMENT!

At No Cost to You

Join the DODGERS ROOTERS' CLUB

Avail yourself of courtesy price ticket privileges.

TO JOIN... Mail this slip in self-addressed stamped envelope to
BROOKLYN FOOTBALL DODGERS, Eagle Bldg., Brooklyn, N. Y.

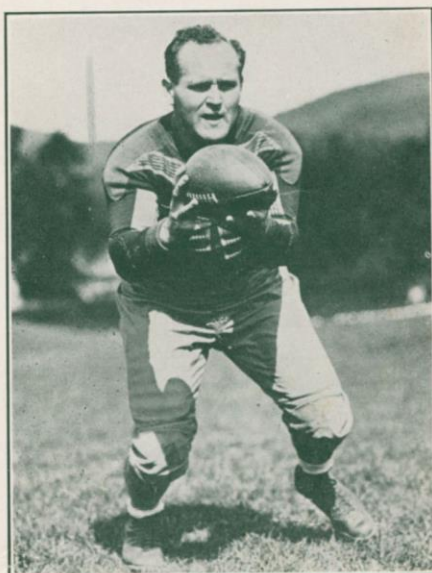
Name.....

Address.....

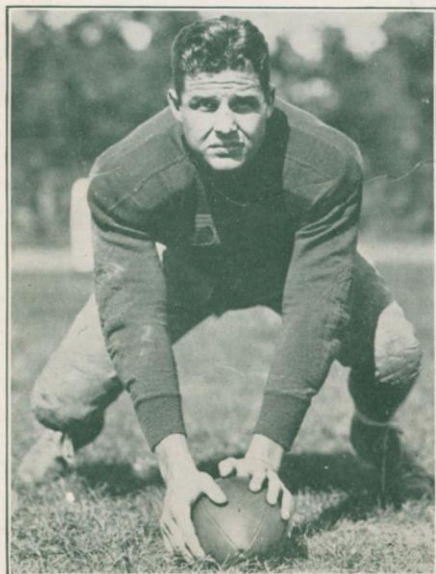
STARRING FOR THE DODGERS



NORMAN C. (RED) FRANKLIN
Oregon State



JOHN KARCIS
Carnegie Tech.



JOHN OEHLER
Purdue



B'HO KIRKLAND
Alabama

THE STARTING L

(Subject to change by)

PHILADELPHIA

Tom Thorp (Columbia), *Referee*

WEINSTOCK

10

Fullback

THOMASON

18

Right Half

STORM

22

Quarter

CARTER JORGENSEN IGNATIUS REESE

17

42

16

25

Right End

Right Tackle

Right Guard

Center



RIBLETT HELDT CROFT OEHLER

11

14

15

7

Left End

Left Tackle

Left Guard

Center

KERCHEVAL

26

Quarter

FRANKLIN

31

Left Half

KOSTKA

30

Fullback

John Reardon (New Hampshire), *Head Linesman*

BROOKLYN D

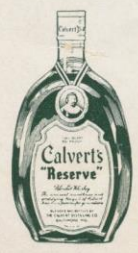
PHILADELPHIA EAGLES ROSTER

LUD WRAY, *Coach*

No.	NAME	Pos.	Hgt.	Wgt.	COLLEGE
10	Weinstock, Isadore...	F. B.	6:0	205	Pittsburgh
11	Kresky, Joe.....	G.	6:0	220	Wisconsin
12	Matesic, Ed.....	B.	6:1	205	Pittsburgh
13	Kenneally, Geo. (Capt.)	E.	6:0	192	St. Bonaventure
14	Hanson, Thomas.....	B.	6:1	197	Temple
15	Willson, Osbern.....	G.	5:9	195	U. of Penn.
16	Ignatius, James.....	G.	6:1	200	Holy Cross
17	Carter, Joe.....	E.	6:1	203	So. Methodist
18	Thomason, Stumpy...	B.	5:7	190	Georgia Tech
19	Leonard, Jim.....	B.	6:0	204	Notre Dame
20	McMurdo, James.....	T.	6:2	210	Pittsburgh
21	Cuba, Paul.....	T.	6:0	210	Pittsburgh
22	Storm, Ed.....	B.	6:1	198	Santa Clara
24	Lackman, Dick.....	B.	5:11	186	None
25	Reese, Henry.....	C.	5:11½	210	Temple
27	Robinson, Burle.....	E.	6:4	195	Brigham Young
28	Padlow, Max.....	E.	6:0	199	Ohio State
36	Manske, Ed.....	E.	6:1	185	Northwestern
42	Jorgensen, Carl.....	T.	6:1	205	St. Mary's
..	Benson, Harry.....	G.	5:10	210	Western Maryland
..	Graham, Tom.....	E.	6:3	210	Temple
..	Brian, Bill.....	T.	6:2	225	Gonzaga



WISDOM
...AFTER
DARK



CLEAR HEADS CALL FOR



STARTING LINEUPS

(to change by coaches)

PHILADELPHIA EAGLES

John Hennessey (Brown), *Umpire*

WEINSTOCK

10

Fullback

HANSON

14

Left Half

STORM

22

Quarter

REESE

WILLSON

CUBA

KENNEALLY

25

15

21

13

Center

Left Guard

Left Tackle

Left End



OEHLER

STOJACK

LEE

BECKER

17

19

21

24

Center

Right Guard

Right Tackle

Right End

ERCHEVAL

26

Quarter

LUMPKIN

Captain

27

Right Half

KOSTKA

30

Fullback

man

R. F. Lynch (Holy Cross), *Field Judge*

BROOKLYN DODGERS



BROOKLYN DODGERS ROSTER

PAUL J. SCHISSLER, JR., *Coach*

No.	NAME	Pos.	Hgt.	Wgt.	COLLEGE
10	Hubbard, Wesley...	E.	6:	190	San Jose, Calif.
11	Riblett, Paul.....	E.	5:11	182	Penn.
12	Eagle, Alex.....	T.	6:2½	220	Oregon University
14	Heldt, Carl.....	T.	6:1	205	Purdue
15	Croft, Win.....	G.	5:11	235	Utah
16	Bergerson, Gil....	T.	6:6	245	Oregon Aggies
17	Oehler, John.....	C.	6:	205	Purdue
18	McDonald, Walter..	C.	5:11	210	Utah
19	Stojack, Frank....	G.	5:11	190	Washington State
20	Kirkland, B'Ho....	G.	6:	215	Alabama
21	Lee, Bill.....	T.	6:2	240	Alabama
22	Robinson, Jack....	T.	6:2¾	220	Kirkville Teachers
23	Fuqua, Ray.....	E.	6:	190	Southern Methodist
24	Becker, Wayland..	E.	6:	185	Marquette
25	Hornbeak, "Jay"...	Q. B.	5:11	185	Washington Univ.
26	Kercheval, Ralph..	H. B.	6:1	193	Kentucky
27	Lumpkin (Father)"C"	Q. B.	6:2½	205	Georgia Tech
28	Sansen, "Ollie"....	H. B.	6:1	200	Iowa
30	Kostka, Stan.....	F. B.	5:11½	215	Minnesota
31	Franklin, "Red"....	H. B.	5:10½	170	Oregon State
32	Grossman, Jack...	H. B.	6:	190	Rutgers
33	White, Wilbur....	H. B.	6:	168	Colorado State
34	Karcis, John.....	F. B.	5:9½	220	Carnegie Tech
35	Norby, John.....	H. B.	6:	195	Idaho



Calvert



7 A.M.
AND ALL'S
WELL!



THE DODGER'S SCHEDULE

Remaining Games

AT HOME

Oct. 27—Philadelphia
Nov. 10—Pittsburgh
Nov. 17—Chicago Cards
Nov. 28—New York (Thanksgiving Day)
Dec. 8—Boston

ABROAD

Nov. 3—At Pittsburgh
Nov. 5—At Philadelphia (Election Day)
Dec. 1—At Detroit

RESULTS OF PAST GAMES

Dodgers, 3; Boston, 7.
Dodgers, 12; Detroit, 10.
Dodgers, 7; Giants, 10.
Dodgers, 14; Chicago Bears, 24.

Biography of Paul J. Schissler, Jr.



Coach of
Brooklyn
Football
Dodgers

Paul J. Schissler, Jr., was born on November 11, 1893, in Hastings, Nebraska, and nineteen years afterwards he launched a football coaching career which was destined to make him a National figure.

That middle-sized youngster who was appointed coach of Hastings High School loved football albeit he was never a star himself. He did not expect to follow the sport either, as other business held his chief interest.

After graduating from Hastings High School, Paul attended Doane College. His stay was brief and he transferred to Hastings College. After a spell at Hastings, Paul switched his alliance to the University of Nebraska. He played football, baseball and basketball at the three institutions.

Schissler outgrew the Hastings High School coaching position and was appointed mentor at Doane College where he remained from 1913 to '15. He then moved on to St. Viator, Kankakee, Illinois, where his team broke the scoring record of the time, defeating Lane Tech. of Chicago by a 205 to 0 margin. Nothing occurred in 1917 but the following year he was called to the University of Nebraska to become backfield coach in football and head coach in baseball and basketball.

Schissler's first opportunity to break into National prominence came in 1921. He was selected to coach Lombard College in Galesburg, Illinois. His squad, composed of nineteen players, met only one defeat despite the fact that it engaged schools far out of its class in size, weight and numbers. The only setback came in the game with Notre Dame, the year of the "Four Horsemen" and "Seven Mules." The score was 7 to 0. Jim Crowley, now coaching Fordham, admits that Lombard was the toughest foe on the Ramblers' exceedingly difficult schedule.

Oregon State, at this time, was in a slump. It had only won one Conference championship in ten seasons. The board searched around for a coach to remedy this slump and finally decided upon Schissler. He remained there from 1924 to '33. His team won several North West Conference titles and divided nine games with Oregon University, one having resulted in a tie. In seven intersectional games with Eastern teams, Schissler never met defeat. He climaxed this intersectional record with a 19 to 7 victory over N. Y. U.'s great team of 1928, the year of Laskman, Strong, Hill and Grant.

Pro football interested Paul in '33 and he accepted an offer to coach the Chicago Cardinals. The Cardinals weren't anything to write home about and Paul decided to break up his team in '34 and replace the veterans with collegians. The club clicked mid-way in the year and were then as formidable as any in the League. Out on the Coast last Winter, the Cardinals defeated the Chicago Bears and the New York Giants.

President Dan Topping and Secretary "Shipwreck" Kelly became interested in Schissler and signed him to coach the Dodgers. Brooklyn fell far below its usual standard in 1934. It was necessary to break up the veteran squad, which had become known as the "fat men's team." Schissler scoured the country and signed up a flock of promising college stars.

READ AND KNOW

History of Pro Football and Its Players

Pro Football, Its Ups and Downs, by Dr. Harry A. March.

Who's Who in Major League Football, by Speed Johnson and Wilfrid Smith.

Spalding's National Football League Guide, edited by John T. Doyle.

Football, by Patsy Clark.
How to Watch Football—The Spectator's Guide, by Lou Little.

Insure Yourself « « Insure Your Business

With
JOHN S. "Shipwreck" KELLY

General Agent All Forms of
LIFE LIABILITY
BONDING INDEMNITY

●
BROWN, CROSBY & CO., Inc.
96 WALL STREET, NEW YORK

Tel. John 4-1800

The National Football League

RULES OF MAJOR LEAGUE FOOTBALL SUMMARIZED BY WILFRID SMITH

Professional football, in the past three seasons, has altered the code of rules under which colleges and universities play the game. The changes have not been numerous but they have been important.

The most important change permits forward passes to be thrown from any point behind the scrimmage line. The college rule permits forward passes from any point FIVE yards behind the scrimmage line.

In professional football the goal posts are on the goal lines.

Professional football declined to adopt the "dead ball" rule of the collegiate code.

Flying blocks and flying tackles are permitted in the professional game. The professional rule against clipping, that is, knocking down an opponent from the rear, is strictly enforced. The penalty is loss of 25 yards, as compared with the collegiate rule which penalizes infractions with loss of 15 yards.

Professional players may be stationed any place on the field so long as they do not advance within 10 yards of the ball before it is kicked.

At the kickoff, the pros may kick from a dirt tee.

Substitute players may communicate with their teammates immediately on entering the game. Coaches must be notified when the limit of three times out have been taken in a half.

When the ball carrier is run out of bounds or is tackled at any point within 15 yards of the side line, the ball will be placed in play at a corresponding point 15 yards from the side of the field.

Offside penalties on the defence within its own 10 yard line have been minimized. Instead of loss of five yards, customary rule, the penalty in this area now is half the distance to the goal.

Here are the two most important changes in the pro rules for this fall:

1. A fumbled ball, except fumbles resulting from lateral passes, may be advanced by either team, no matter whether the ball strikes the ground or not. On fumbled laterals, the rule remains the same. The offense may recover and advance; the defense only may recover unless the ball is caught in the air. Then it may be advanced. Fumbled kicks may be recovered by the kicking team. They can not be advanced unless the receiver of the kick gains possession and then fumbles when tackled.

2. The penalty for two forward passes on the same down has been changed. In the past there have been several instances where a forward pass was completed successfully and after the ball had been advanced for a long gain, an attempted lateral pass actually became a second forward pass. Under the collegiate rule the ball is brought back to the point at which it originally was put into play. The new professional rule provides for a loss of FIVE yards from the point at the second and illegal forward pass.

A second incomplete forward pass in the end zone constitutes a touchback and loss of the ball to opponents on their 20 yard line. This is the rule in the collegiate code. It also is the professional rule unless the second incomplete pass into the end zone is thrown when the ball was put into play from a point back of the opponents' 20 yard line. In this case the ball passes over to the opponents at that point rather than the 20 yard line.



NOW

—AND AFTER
THE GAME



GET A LIFT
WITH A
Camel

COSTLIER TOBACCOS . . . Camels are
made from finer, MORE EXPENSIVE TOBACCOS —
Turkish and Domestic — than any other popular brand.