

TWENTY-FIVE CENTS



**NEW YORK**

**GIANTS**



**PHILADELPHIA EAGLES**

**COLO GROUNDS . . . NOVEMBER 10, 1946**



# Ken Strong Day Here Nov. 24 Draws Immediate Response



KEN STRONG

The New York Football Giants Football club's announcement the Giant-Pittsburgh Steelers game here Nov. 24 had been designated as "Ken Strong Day" drew an immediate and enthusiastic response from the sport world, football in particular. Fans from far and near not only placed their stamp of approval on the idea offered by numerous Strong admirers but also send along their contributions that an appropriate gift could be made to one of the greatest stars in the gridiron's long history.

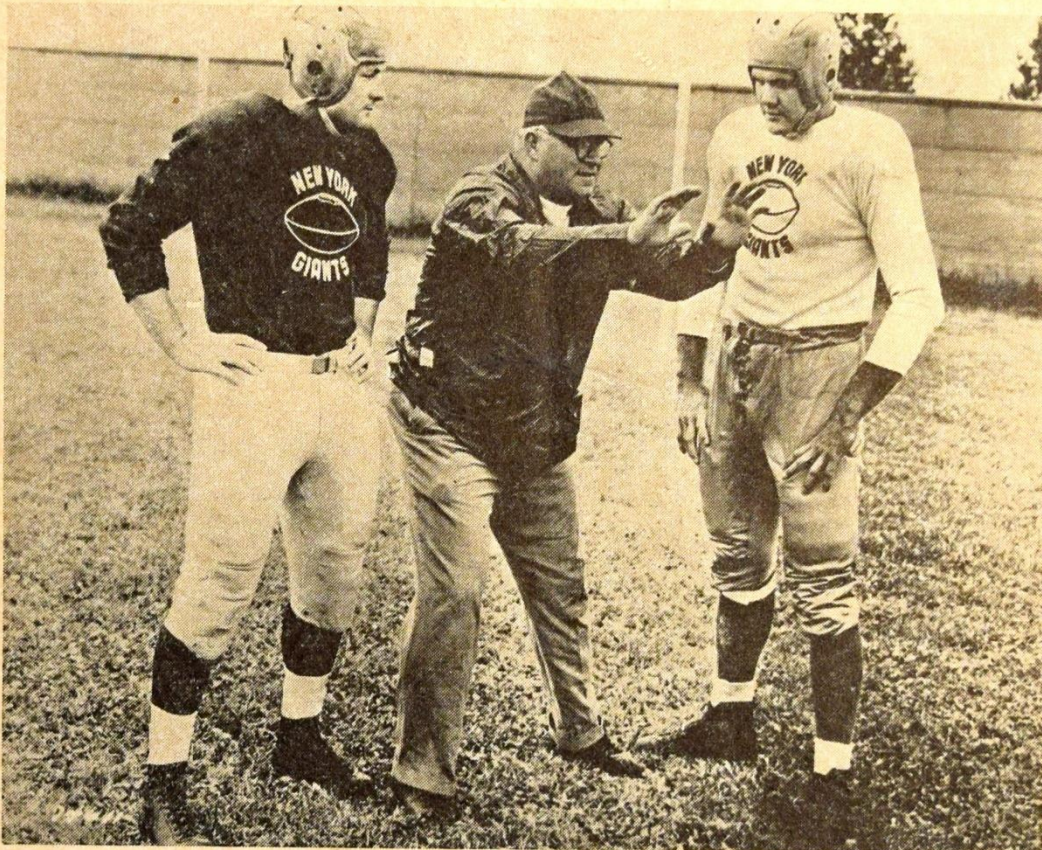
In the violet uniform of New York University in the institutions greatest football era and in the gruelling professional competition, the stalwart Strong not only established many playing records but never lost his popularity. Ken's numerous outstanding achievements would fill many book pages. His record will be cherished as long as the game is played.

Herman J. Bergasse, Staten Island's No. 1 football rooter, is chairman of a large committee of well-known persons and a large group from the field of sports writers and Radio broadcasters. They are all Ken's personal friends. It is the committee's plan to make Ken Strong Day one of the most momentous occasions in New York sport annals.

Those wishing to participate in honoring one of this city's outstanding sport figures are requested to send their contributions, no matter how small, to Herman J. Bergasse, chairman Ken Strong Day Committee, Room 802—60 Beaver Street, New York City. Many already have done so. Don't delay to do your share in honoring Ken who has played twenty-four years of high school, college, and professional football.



# Jim White Giant of Week on Exploit against Soaring Eagles



Left to right—JIM WHITE, STEVE OWEN and TEX COULTER

**A** HAND for Jim White, spectacular tackle of the Owen-Mara forces. He is the Giant of the Week. In addition to putting up a robust battle at his position against the Philadelphia Eagles down at Shibe Park last Sunday, White tore in to grab a blocked kick in the end zone, and give the New Yorks one of their two touchdowns. The other was scored by Don McCafferty on a pass from Emery Nix.

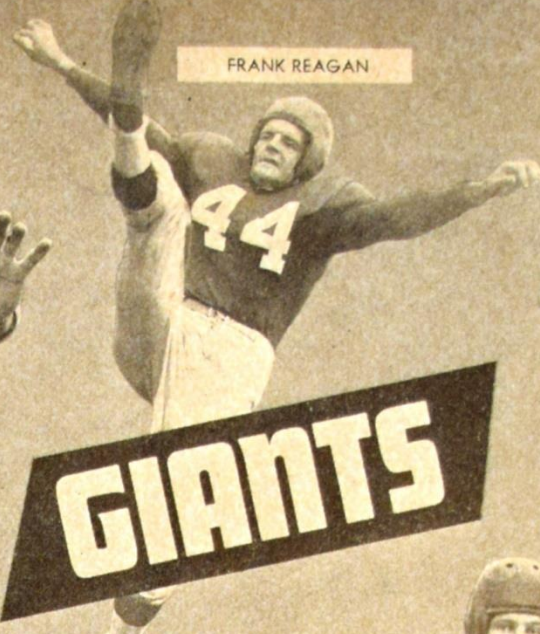
Not to be overlooked in the allocation of honors for the Giants in that unsuccessful invasion of Philadelphia is George Franck, among whose accomplishments was a 38-yard dash around the enemy left wing.

In White, who came to Steve Owen from Notre Dame, and Tex Coulter, who landed here from West Point,—the first Army player to go pro since Red Cagle,—the Giants are richly endowed at the tackle positions.





DE WITT (TEX) COULTER

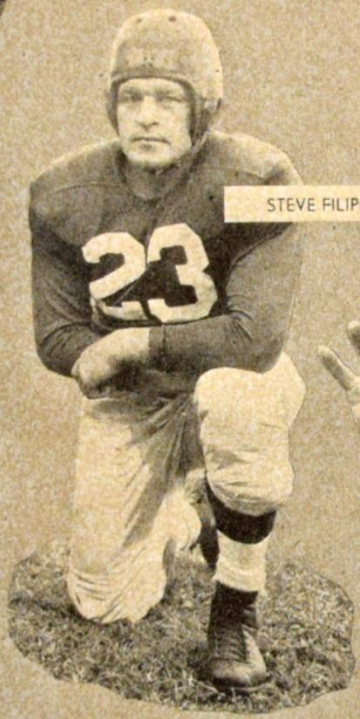


FRANK REAGAN

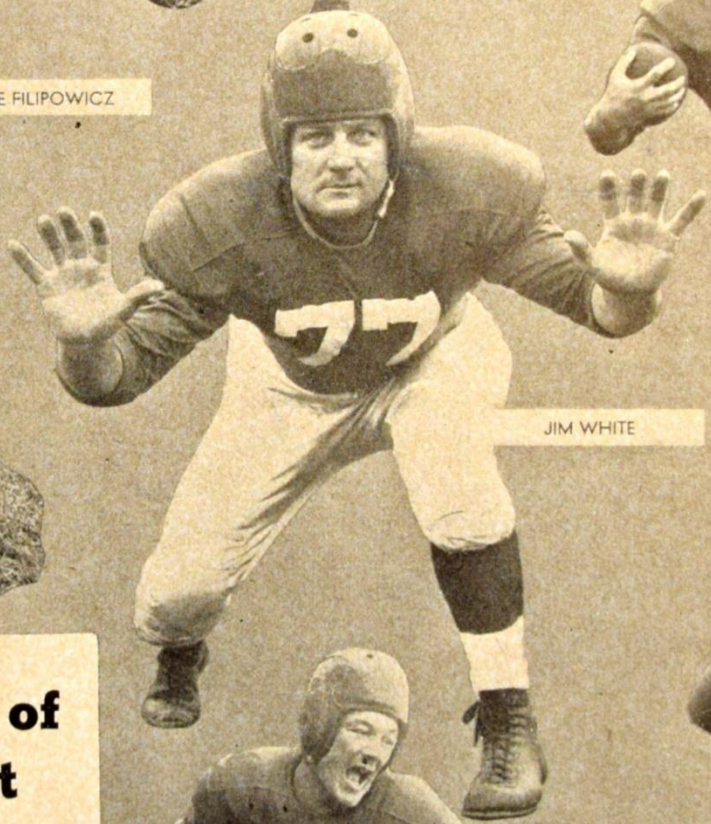


LOU DE FILIPPO

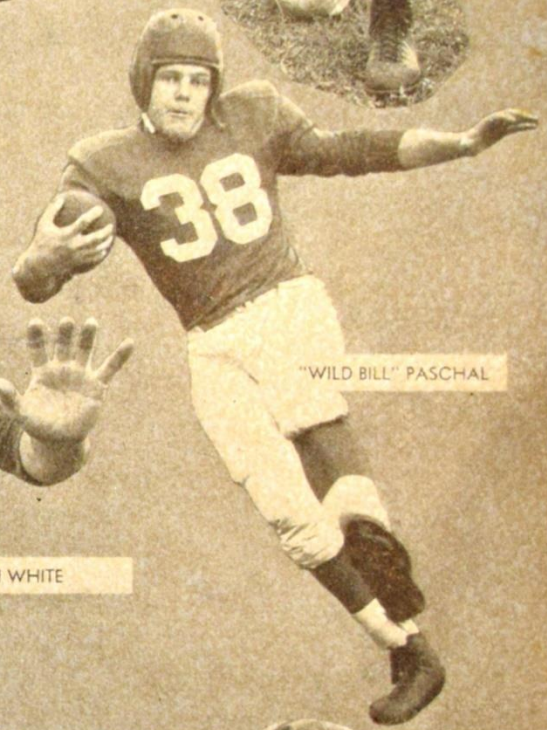
# GIANTS



STEVE FILIPOWICZ



JIM WHITE



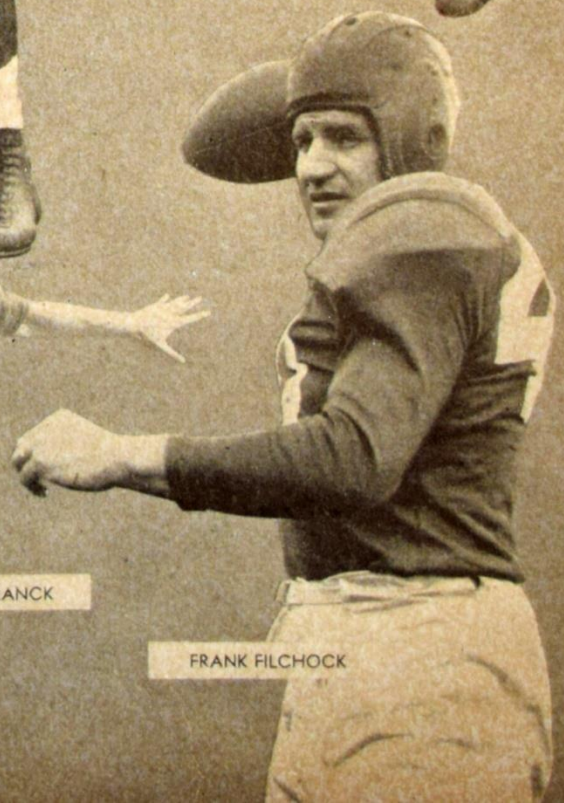
"WILD BILL" PASCHAL

## Noble Array of Grid Talent

Here is a Page of Football Fashions for 1946—a grand array of gridiron experts clad in the well-known uniform of the Maras. Here are punch and power, here are adroitness and speed, pitching superlatives and line-crashing abilities. All of them out there for your delectation!



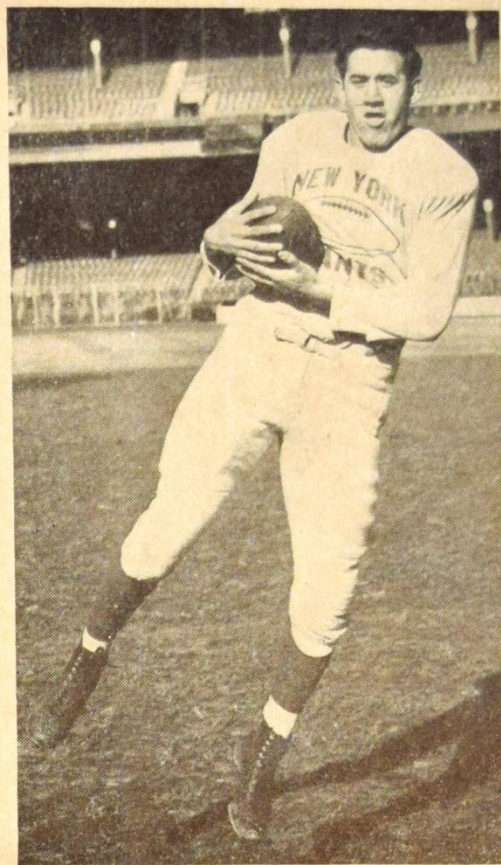
GEORGE FRANCK



FRANK FILCHOCK



# *Liebel's Play Against Bears Catches Eyes of Giant Fans*



FRANK LIEBEL

**T**HE latest innovation inaugurated at the NEW YORK FOOTBALL GIANTS home games, the award of a "Duel In The Sun" \$100 Victory Bond to the outstanding Giants player of each tilt, sprung off to a successful start October 27 as a veritable cascade of votes for various players poured in from the fans. In addition to New York, New Jersey and Pennsylvania fans, postmarks from the Middle West and New England States indicated the tremendous interest in the current National Football League race shown by out-of-town visitors.

The tabulation of the ballots disclosed that the fans had selected Frank Liebel, Giant glue-fingered offensive end and defensive halfback, as their choice for the standout player of the 14-0 victory over the favored Chicago Bears, Liebel, who caught one touchdown pass, intercepted several forwards and was a bulwark of defense all afternoon, nosed out Frank Filchock for the award.

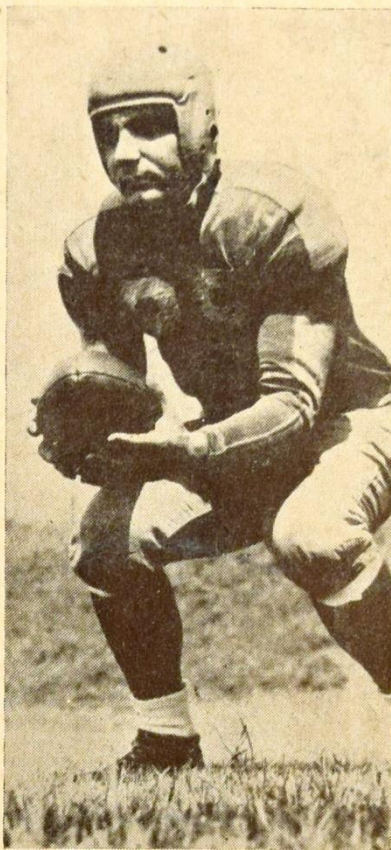
The Bond will be presented at the half of today's game with the Philadelphia Eagles and is the first of \$1100 worth of "Duel In The Sun" Victory Bonds which the outstanding New York Football Giants players will receive between now and the end of the season. \*



## ***Boston Yanks, Featuring Dimancheff, Governali, Dancewicz, Come Next***



**JOHNNY GRIGAS**  
*Fullback*



**PAUL GOVERNALI**  
*Quarterback*



**BABE DIMANCHEFF**  
*Halfback*

**N**EXT Sunday will find the Boston Yanks opposing the Giants at the Polo Grounds. Steve Owen's gang already holds a 17-0 decision over the Hub outfit.

Herb Kopf, the Yank coach, is well known to New York fans as a sound coach and a fine strategist. He was Lou Little's assistant for many years and before the war ran football at Manhattan College. Herb has had his vicissitudes this season, but he has some remarkable backs and they are up to making trouble for any squad in the National League.

There is, for example, Boris Babe Dimancheff, the hard running halfback from Purdue. Another star on the Yanks is Paul Governali, who used to pitch them for Columbia. Add Frank Dancewicz, from Notre Dame; Johnny Grigas, 205-pound fullback from Holy Cross, and Mike Micka, from Colgate, and you have quite a delegation of pitchers, punters and runners.

Boston is out to avenge that beating on its own field, and the Giants will be all set for Herb's drive.



## PROBABLE PHILADELPHIA EAGLES LINE-UP

<b>L. E.</b>	<b>L. T.</b>	<b>L. G.</b>	<b>C.</b>	<b>T. G.</b>	<b>R. T.</b>	<b>R. E.</b>
FERRANTE (83)	WISTERT (70)	MICHAELS (60)	LINDSKOG (52)	MARONIC (61)	SEARS (79)	HUMBERT (81)
Smeja (82)	Kilroy (76)	Lio (62)	Graves (51)	McDonough (64)	Douglas (71)	Cabrelli (84)
McDowell (85)	Eibner (74)	Wyhonic (66)	Wojciechowicz (53)			Krieger (89)
<b>Q. B.</b>	<b>L. H. B.</b>	<b>R. H. B.</b>	<b>F. B.</b>			
ZIMMERMAN (7)	PRITCHARD (30)	BLEEKER (49)	CASTIGLIA (31)			
Thompson (11)	Steele (37)	Hinkle (43)	Muha (36)			
Sherman (10)	Van Buren (15)	Steinke (41)	Kish (44)			
	Ormsbee (40)	Craft (33)				

## PHILADELPHIA EAGLES ROSTER

No.	Player	Position	Weight	Height	Age	College	Years in NFL
7	Zimmerman, Roy	QB	208	6:02	28	San Jose State	7th
10	Sherman, Al	QB	173	5:11	23	Brooklyn College	4th
11	Thompson, Tommy	QB	195	6:00	27	Tulsa	5th
15	Van Buren, Steve	HB	207	6:01	25	Louisiana State	3rd
30	Pritchard, Bosh	HB	168	5:10	27	V. M. I.	2nd
31	Castiglia, Jim	FB	223	5:10	27	Georgetown	3rd
33	Craft, Russell	HB	176	5:09	27	Alabama	1st
36	Muha, Joe	FB	206	6:01	25	V. M. I.	1st
37	Steele, Ernie	HB	182	6:00	28	U. of Washington	5th
40	Ormsbee, Elliott	HB	172	5:10	24	Bradley Tech	1st
41	Steinke, Gil	HB	172	6:00	26	Texas A and I	3rd
43	Hinkle, Jack	HB	185	6:00	28	Syracuse	5th
44	Kish, Ben	FB	221	6:01	29	Pittsburgh	6th
49	Bleeker, Mel	HB	190	6:00	26	U. of So. California	3rd
51	Graves, Ray	C	204	6:00	27	Tennessee	3rd
52	Lindskog, Vic	C	200	6:01	30	Stanford	3rd
53	Wojciechowicz, Alex	C	220	6:00	30	Fordham	8th
60	Michaels, Eddie	G	217	5:10	32	Villanova	7th
61	Maronic, Duke	G	217	5:09	25	No college	3rd
62	Lio, Augie	G	243	5:11	27	Georgetown	6th
64	McDonough, Bob	G	218	5:10	29	Duke	1st
66	Wyhonic, John	G	203	6:00	26	Alabama	1st
70	Wistert, Al	T	206	6:01	25	Michigan	4th
71	Douglas, Otis	T	223	6:00	35	William and Mary	1st
74	Eibner, John	T	217	6:03	29	Kentucky	3rd
76	Kilroy, Frank	T	250	6:01	25	Temple	4th
79	Sears, Vic	T	210	6:03	28	Oregon State	6th
81	Humbert, Dick	E	176	6:01	27	U. of Richmond	3rd
82	Smeja, Rudy	E	196	6:02	25	Michigan	3rd
83	Ferrante, Jack	E	200	6:00	29	No college	4th
84	Cabrelli, Larry	E	185	5:10	29	Colgate	6th
85	McDowell, Jay	E	210	6:02	26	U. of Washington	1st
89	Krieger, Robert E.	E	190	6:01	26	Dartmouth	2nd

Head Coach: Earle (Greasy) Neale.



ME

# PROBABLE NEW YORK GIANTS LINE-UP

<b>L. E.</b> POOLE (80) McCafferty (87) Liebel (88)	<b>L. T.</b> COULTER (79) Cope (1) Byler (70)	<b>L. G.</b> DOBELSTEIN (67) Edwards (66) Tuttle (61)	<b>C.</b> GLADCHUK (51) De Filippo (55) Palazzi (57)	<b>R. G.</b> YOUNCE (60) Lunday (65)	<b>R. T.</b> WHITE (77) Ragazzo (71) Carroll (90)	<b>R. E.</b> HOWELL (81) Mead (85) Weiss (83)
<b>Q. B.</b> GORGONE (25) Filipowicz (23) Hare (22)	<b>L. H. B.</b> FILCHOCK (40) Reagan (44) Nix (41)	<b>R. H. B.</b> FRANCK (37) Livingston (10) Brown (12)	<b>F. B.</b> HAPES (30) Paschal (33) Soar (15) Strong (50)			

## NEW YORK GIANTS ROSTER

No.	Player	Position	Weight	Height	Age	College	Years Giant
1	Cope, Frank (Capt.)	LT	230	6:02	30	Santa Clara	8
10	Livingston, Howie	RH	190	6:01	24	Fullerton J. C.	3
12	Brown, Dave	RH	190	5:11	27	Alabama	1
15	Soar, Hank	RH	215	6:00	30	Providence	9
22	Hare, Cecil	FB	195	5:11	27	Gonzaga	1
23	Filipowicz, Steve	QB	200	5:08	26	Fordham	2
25	Gorgone, Peter	QB	220	6:00	25	Muhlenberg	1
30	Hapes, Merle	FB	195	5:11	27	Mississippi	2
37	Franck, George	FB	190	6:00	27	Minnesota	3
38	Paschal, Bill	FB	200	6:00	24	Georgia Tech	4
40	Filchock, Frank	LH	190	5:11	29	Indiana	1
41	Nix, Emery	LH	180	5:11	26	T.C.U.	2
44	Reagan, Frank	LH	185	6:00	26	Pennsylvania	1
50	Strong, Ken	FB	210	6:01	39	New York U.	8
51	Gladchuk, Chester	C	245	6:05	29	Boston College	2
55	DeFillippo, Lou	C	230	6:01	29	Fordham	3
57	Palazzi, Lou	C	195	6:00	25	Penn State	1
60	Younce, Len	LG	210	6:01	29	Oregon State	4
61	Tuttle, Orville	RG	215	5:09	32	Oklahoma City	6
65	Lunday, Ken	LG	220	6:03	32	Arkansas	6
66	Edwards, Bill	RG	215	6:00	25	Baylor	4
67	Dobelstein, Bob	RG	210	6:01	24	U. of Tenn.	1
70	Byler, Joe	RT	255	6:05	23	Nebraska	1
71	Ragazzo, Phil	RT	220	6:02	30	West. Reserve	2
77	White, James	LT	225	6:02	25	Notre Dame	1
79	Coulter, DeWitt	LT	225	6:04	21	West Point	1
80	Poole, Jim	LE	225	6:03	30	Mississippi	6
81	Howell, Jim Lee	RE	215	6:06	30	Arkansas	7
83	Weiss, John	RE	205	6:03	24	H. Snyder H. S.	3
85	Mead, Jack	RE	210	6:03	24	Wisconsin	1
87	McCafferty, Don	LE	220	6:04	25	Ohio State	1
88	Liebel, Frank	RE	220	6:01	27	Norwich	5
90	Carroll, Victor	RT	230	6:04	32	Nevada	4

Head Coach.....Steve Owen, Phillips U.  
 Assistant Coach..Richard (Red) Smith, Notre Dame  
 Line Coach.....Bill Owen, Phillips U.  
 Backfield Coach.....Mike Palm, Penn State  
 Trainers.....Gus Mauch, Charley Porter  
 Physician.....Francis J. Sweeny, M.D.  
 Dentist.....Arthur C. Croker, D.D.S.



# Giants Have Beaten Philadelphia Team 18 Times Since 1933

COMPETITION between the Giants and the Philadelphia Eagles goes back to 1933, when Steve Owen's men registered a 56-0 landslide. In their second meeting that season the Philadelphia outfit rallied but could not quite make it, and was beaten 20-14.

The series shows 25 meetings, with half a dozen successes for Philadelphia, and one tie. Last week the Eagles hung one on the New York outfit, at Philadelphia, 24 to 14. In 1945, the Eagles trounced Steve Owen's club in their first meeting, 38 to 17, but the Giants reaped a 28-21 revenge in their second contest. Here are the scores of the series:

## GIANTS vs. PHILADELPHIA EAGLES

Giants Won 18—Lost 6—Tied 1

- 1933—Giants 56, Eagles 0  
Giants 20, Eagles 14
- 1934—Giants 17, Eagles 0  
Eagles 6, Giants 0
- 1935—Giants 10, Eagles 0  
Giants 21, Eagles 14
- 1936—Eagles 10, Giants 7  
Giants 21, Eagles 17
- 1937—Giants 16, Eagles 7  
Giants 21, Eagles 0
- 1938—Eagles 14, Giants 10  
Giants 17, Eagles 7
- 1939—Giants 13, Eagles 3  
Giants 27, Eagles 10
- 1940—Giants 20, Eagles 14  
Giants 17, Eagles 7
- 1941—Giants 21, Eagles 0  
Giants 16, Eagles 0
- 1942—Giants 35, Eagles 17  
Giants 14, Eagles 0
- 1944—Eagles 24, Giants 17  
Giants 21, Eagles 21
- 1945—Eagles 38, Giants 17  
Giants 28, Eagles 21
- 1946—Eagles 24, Giants 14

Points: Giants, 579; Eagles 254.

## Tickets on Sale Now For Next Sunday

In Lower Grandstand back of Section 16

Also on sale at

NEW YORK FOOTBALL GIANTS

11 West 42nd Street

For all home games

Also at

New York Baseball Giants

104 West 42nd Street

## GIANTS' SCHEDULE AT POLO GROUNDS

November 17—Boston Yanks

November 24—Pittsburgh Steelers

December 1—Los Angeles Rams

December 8—Washington Redskins

Giants' Next Game at Polo Grounds  
Sunday, November 17

## BOSTON YANKS

With such stalwarts as Dimencheff, Darcewicz, Governali, Zerro and Micka. Remember Governali kicking them for Columbia? He's better than ever.

## NEW YORK GIANTS' RECORD FOR 1946

- Giants, 17; Boston Yanks, 0  
Giants, 17; Pittsburgh Steelers, 14  
Giants, 14; Redskins, 24  
Giants, 28; Chicago Cardinals, 24  
Giants, 14; Philadelphia Eagles, 24  
Giants, 14; Chicago Bears, 0



**INTRODUCING**

**NEW YORK'S NEWEST  
MAJOR LEAGUE SPORT**

**PRO  
BASKETBALL**

- **INAUGURAL HOME GAME  
TOMORROW NIGHT 8:40**

**N. Y. KNICKERBOCKERS**

**vs. CHICAGO**

**MADISON SQUARE GARDEN**

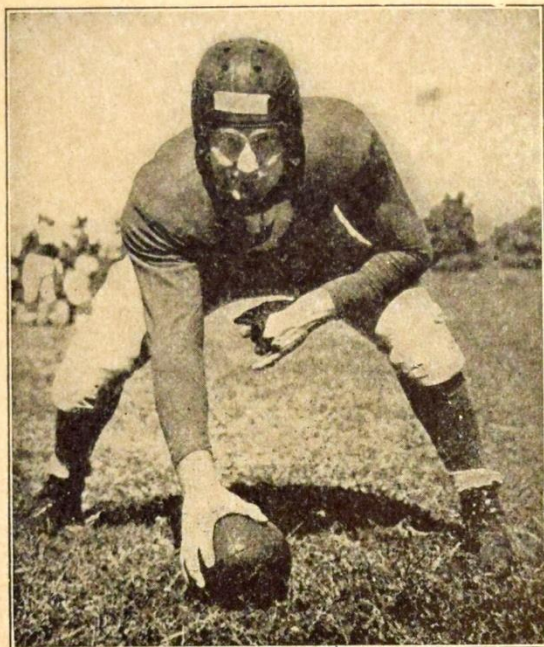
This is the home-town debut of The Knickerbockers in the new Basketball Association of America league. Sponsored by Madison Square Garden, the Knickerbocker squad is made up of nationally-known basketball stars, coached by Neil Cohalan of Manhattan College fame. All-star squads from 10 other cities in the League play the Knickerbockers during the season. Four games are in the Garden; the remaining 26 games in the 69th Regiment Armory, 25th St. and Lexington Ave.

- **SAT. NOV. 16 Pittsburgh at 69th Regt. Armory**
- **MON. NOV. 18 Detroit at Madison Sq. Garden**
- **WED. NOV. 20 Chicago at 69th Regt. Armory**

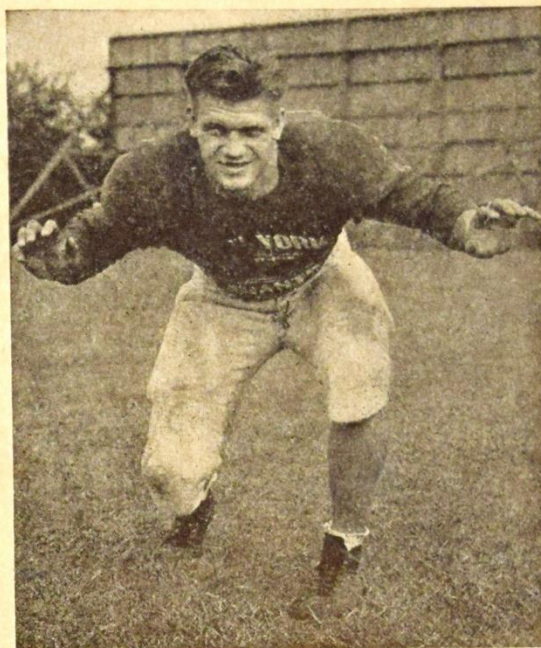
**RESERVED SEATS NOW** at Garden Box Office. For information on season subscriptions and 1946-47 schedule of home games, write to Basketball Dept., Madison Square Garden or phone COlumbus 5-6800.



# Steve Owen Finally Selects His All-Time Team of Giant Stars



MEL HEIN



AL BLOZIS

STEVE OWEN finally has consented to pick his all time Giant team. He has named Nello Falaschi, Ed Danowski, Tuffy Leemans and Ken Strong for his backs, with Jim Poole and Red Badgro ends, the late Al Blozis and Cal Hubbard, tackles, Len Younce and Butch Gibson guards, and the one and only Mel Hein at centre. Here is the spectacular eleven:—



Years	Player	Pos.	Wgt.	Hgt.	College
1937-46	Poole, Jim	L. E.	225	6:3	U. of Mississippi
1942-44	Blozis, Al	L. T.	250	6:6	Georgetown
1941-46	Younce, Len	L. G.	210	6:1	Oregon State
1931-45	Hein, Mel (Capt.)	C.	235	6:4	Washington State
1932-34	Gibson, Butch	R. G.	210	5:11	Grove City
1930-33	Hubbard, Cal	R. T.	260	6:7	Geneva
1928-31	Badgro, Red	R. E.	215	6:3	U. S. C.
1938-40	Falaschi, Nello	Q. B.	195	6:1	Santa Clara
1934-39	Danowski, Ed	L. H.	200	6:2	Fordham
1936-43	Leemans, Tuffy	R. H.	195	6:	Geo. Washington
1933-46	Strong, Ken	F. B.	210	6:1	New York U.



# Giants, Eagles Tied in East; Bears Lead in Western Half

**B**Y beating the Giants last Sunday, the Eagles worked into parity with the New York club at the top of the Eastern half of the National League. The Bears rebounded from their defeat here with a triumph over the Packers, to maintain their top position in the Western half.

The way things have been going, no club is safe, no lead is sure, and it's helter skelter from now to the December 8 windup of the regular schedule.

Washington's two consecutive defeats in the Eastern half have complicated things no little for George Marshall's outfit.

## 1946 NATIONAL LEAGUE SCHEDULE AND RESULTS

### SEPTEMBER 20

7—Chicago Cardinals at Pittsburgh—14

### SEPTEMBER 29

30—Chicago Bears at Green Bay—7  
14—Detroit at Chicago Cardinals—34  
25—Philadelphia at Los Angeles—14  
14—Pittsburgh at Washington—14

### OCTOBER 1

17—NEW YORK at BOSTON—0

### OCTOBER 6

17—NEW YORK at PITTSBURGH—14  
25—Boston at Philadelphia—49  
34—Chicago Bears at Chicago Cardinals—17  
16—Detroit at Washington—17  
21—Los Angeles vs. Green Bay at Milwaukee—17

### OCTOBER 13

14—NEW YORK at WASHINGTON—24  
36—Chicago Cardinals at Detroit—14  
17—Green Bay at Philadelphia—7  
28—Los Angeles at Chicago Bears—28  
7—Boston at Pittsburgh—16

### OCTOBER 20

24—CHICAGO CARDINALS at NEW YORK—28  
14—Detroit at Los Angeles—35  
14—Philadelphia at Chicago Bears—21  
7—Pittsburgh at Green Bay—17  
14—Washington at Boston—6

### OCTOBER 27

0—CHICAGO BEARS at NEW YORK—14  
7—Pittsburgh at Boston—33  
7—Detroit at Green Bay—10  
10—Los Angeles at Chicago Cardinals—34  
28—Philadelphia at Washington—24

### NOVEMBER 3

14—NEW YORK at PHILADELPHIA—24  
28—Chicago Cardinals at Boston—14  
7—Green Bay at Chicago Bears—10  
41—Los Angeles at Detroit—20  
7—Washington at Pittsburgh—14

### NOVEMBER 10

PHILADELPHIA at NEW YORK  
Boston at Washington  
Chicago Bears at Los Angeles  
Green Bay at Chicago Cardinals  
Pittsburgh at Detroit

### NOVEMBER 17

BOSTON at NEW YORK  
Chicago Cardinals at Los Angeles  
Green Bay at Detroit  
Philadelphia at Pittsburgh  
Washington at Chicago Bears

### NOVEMBER 24

PITTSBURGH at NEW YORK  
Chicago Cardinals at Green Bay  
Detroit at Chicago Bears  
Los Angeles at Boston  
Washington at Philadelphia

### NOVEMBER 28

Boston at Detroit

### DECEMBER 1

LOS ANGELES at NEW YORK  
Chicago Cardinals at Chicago Bears  
Green Bay at Washington  
Pittsburgh at Philadelphia

### DECEMBER 8

WASHINGTON at NEW YORK  
Chicago Bears at Detroit  
Green Bay at Los Angeles  
Philadelphia at Boston



## National League Officials and Their Numbers

### Referees

Samuel Weiss.....	2	Thomas Dowd.....	4
William Downes.....	3	Carl Rebele.....	8
Ronald Gibbs.....	5	Rawson Bowen.....	6
Emil Heintz.....	9	Jack Mashin.....	32

### Umpires

John Kelly.....	18	Harry Robb.....	15
Carl Brubaker.....	14	Cletus Gardner.....	12
Joseph Crowley.....	11	James Blewett.....	16
Samuel Wilson.....	19		

### Field Judges

William McHugh.....	28	Eugene Miller.....	26
Charles Sweeney.....	22	John Fox.....	24
Henry Haines.....	21	Orian Landreth.....	23
William Grimberg.....	27		

### Head Linesmen

Samuel Pecoraro.....	37	Yans Wallace.....	34
Daniel Tehan.....	36	Charles Gault.....	39
Lloyd Brazil.....	38	Rawson Bowen.....	6
Charles Berry.....	31	Clarence Savage.....	30

## League Standings

### LAST SUNDAY'S RESULTS

Philadelphia 24, New York 14.  
Pittsburgh 14, Washington 7.  
Chicago Cardinals 28, Boston 14.  
Chicago Bears 10, Green Bay 7.  
Los Angeles 41, Detroit 20.

### Eastern Division

	W.	L.	T.	Points	
				For.	Agst.
New York.....	4	2	0	104	86
Philadelphia.....	4	2	0	147	117
Pittsburgh.....	4	2	1	112	76
Washington.....	3	2	1	100	92
Boston.....	0	6	0	59	157

### Western Division

Chicago Bears.....	4	1	1	123	87
Los Angeles.....	3	2	1	149	138
Chicago Cardinals.....	4	3	0	180	128
Green Bay.....	3	3	0	77	82
Detroit.....	0	6	0	85	173

### Today's Schedule

Philadelphia at New York, Boston at Washington, Chicago Bears at Los Angeles, Green Bay at Chicago Cardinals, Pittsburgh at Detroit.

## IMPORTANT PENALTIES

1 Offside, both sides.....	No penalty
2 Offside.....	5 yards
3 Holding, etc., by defensive side.....	5 yards
4 Man in motion—no shift.....	5 yards
5 Crawling.....	5 yards
6 Taking out time more than three times during half.....	5 yards
7 Running into kicker.....	5 yards
8 Substitute failing to report.....	5 yards
9 Unreasonable delay in putting ball into play.....	5 yards
10 Starting forward before ball.....	5 yards
11 Illegal use of hands and arms by offense.....	15 yards
12 Roughing kicker.....	15 yards
13 Unnecessary roughness.....	15 yards
14 Intentional throwing of forward pass to ground.....	15 yards
15 Unsportsmanlike conduct.....	15 yards
16 Man in motion on shift.....	15 yards
17 Interference on forward by passing team.....	15 yards
18 Clipping from behind.....	15 yards
19 Interference on forward by defense	1st down at point of foul
20 Penalty declined	



*"You know, I never really cared much for the sport until you got rid of your '5 o'clock Shadow'."*

Avoid  
'5 o'clock Shadow'

with

**GEM**

Gem Division  
American Safety Razor Corp.  
Brooklyn 1, N. Y.



The only razor  
with the  
**SKIN-LEVEL  
BEVEL**







# National Football League Rule Changes for 1946



**B**LOCKER not required to have his hands close together or clasped against his body provided any hand or the hand of any arm used to contact an opponent is in contact with his own body.

A is on his line provided one hand is touching ground and it is on or within one foot of his line. No change in rule if neither hand is touching ground except that in either case his shoulders must face B's goal line.

The toss of coin is to be made prior to either team leaving field after pre-game warm up period. This does not preclude the Captains meeting at center of field at the usual three minutes before game time, but only the receivers and their goal are to be indicated at this time.

Penalty for illegal return: Loss of 15 and withdrawal. Ball remains dead for illegal return or withdrawal between downs. A player leaving field between downs must be replaced.

During dead ball and with time in, not more than three substitutes of same team may enter. Penalty: Loss of 5 from succeeding spot and ball remains dead. Number of down and necessary line remain the same. Referee sounds whistle (time in) when enforcement is completed and without asking if Captains are ready. Using entering substitute or withdrawn player to deceive opponents is unsportsmanlike conduct. (10-2-7-2).

Penalty for illegal equipment: Loss of 5 for delay and suspension for at least one down. May return thereafter if legally equipped.

When A fumbles (unintentional) inside B's 10, during a 4th down play from scrimmage, only the runner may advance if recovery is by A. Otherwise, if they recover, ball is next put in play at spot of fumble unless spot of recovery is behind that spot (spot of recovery). No change in rule in regard to advance by B or to an intentional fumble forward (forward pass).

When a forward pass from behind line touches either team's goal post or cross bar it is incomplete. Penalty: Loss of down at previous spot. Penalty for pass touching ineligible A: Loss of down and 15 from previous spot, unless accidentally touched behind line in which case it is loss of down only.

When a scrimmage or return kick crosses receiver's goal line from impetus of kick, it is not an automatic touchback provided any receiver touches the kick in play thereafter. Official covering play is to pause momentarily to permit an immediate attempt at recovery.

Penalty for invalid fair catch signal: Receivers snap 5 yards behind spot of signal. Ball dead when caught unless touched by one of kickers. To be valid, signal must be made while kick is in flight.

Prior to snap, Referee shall assume a stance such that he is in the clear of and behind any backfield player. This is also to be construed as including the normal path of any player in motion behind his line or the line of vision between such a player and the maker of a pass behind the line.