

OFFICIAL PROGRAM TWENTY-FIVE CENTS

**NEW YORK**

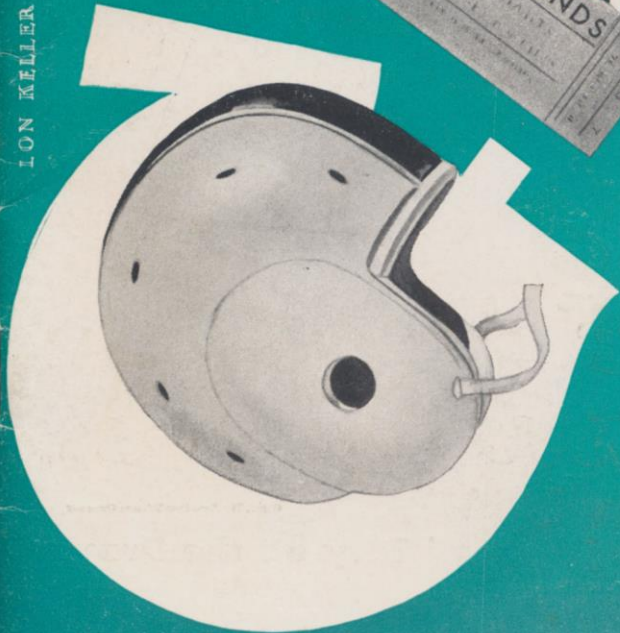


**PHILADELPHIA**

**EAGLES**

NOVEMBER 9 • 1947

ION KELLER





*Yes, L.S./M.F.T.*

*LUCKY STRIKE*  
*means Fine Tobacco*



Copyright © The American Tobacco Company

**So Round, So Firm, So Fully Packed — So Free and Easy on the Draw**



Max Murley

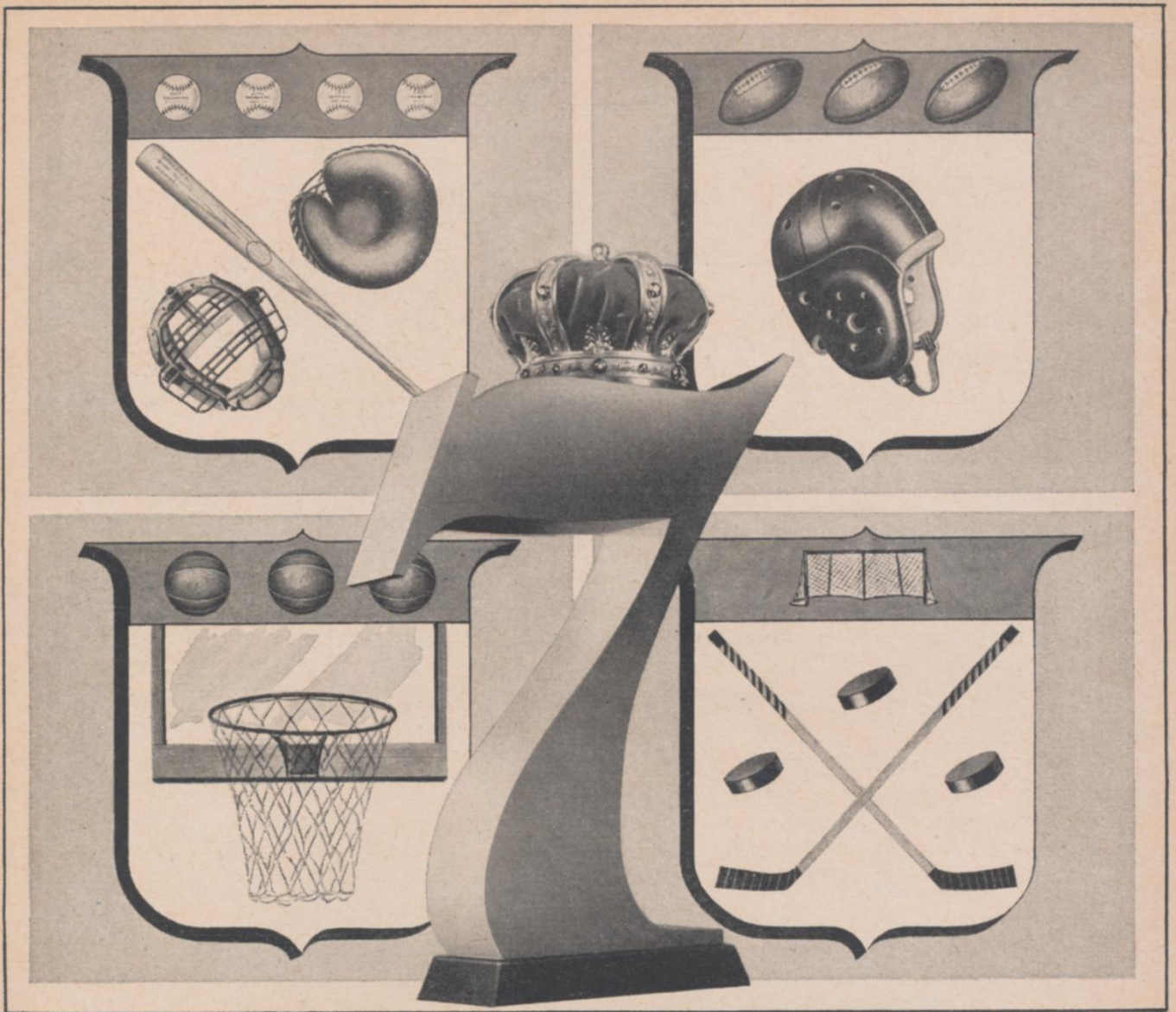


*highsign of Style*

WHERE YOU find  
this label, you find men's  
clothes at their smartest; exclusive  
fabrics, tailored with the  
surest of style authority.

AT THE BETTER MEN'S STORES

For style chart and name of nearest dealer, write to Dept. F, Eagle Clothes, Inc., 79 Fifth Avenue, New York 3, N. Y.



## In Great Favor...

BASEBALL, FOOTBALL, BASKETBALL, and hockey... America's greatest sports... more people than ever before are enjoying them for their incomparable thrill... just as more people than ever before are enjoying "Seven Crown" Seagram's finest American whiskey... because of its matchless *pre-war* quality.

*Say Seagram's and be Sure ...  
of Pre-War Quality*

SEAGRAM'S 7 CROWN. BLENDED WHISKEY. 86.8 Proof. 65% Grain Neutral Spirits.  
Seagram - Distillers Corporation, Chrysler Building, New York

# THE GIANTS LOOK AHEAD

The recent acquisition of Paul Governali not only has brought to the Giants one of the National League's greatest passers but also has furnished Coach Steve Owen with a key man around whom to build the Giants of the future.

While the results just now are becoming apparent, his rebuilding program already is moving along in high gear, as reflected by the presence of a record crop of fourteen first-year men on the current Giant roster.

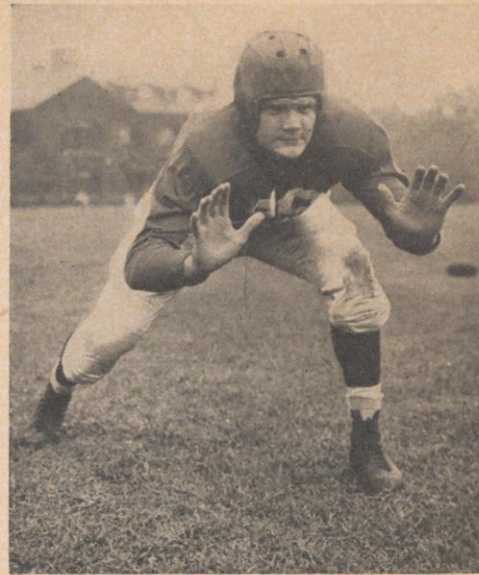
When the Giants pitched training camp at Superior, Wis., on Aug. 1, twenty-seven rookies were included in the squad that reported to Owen and his aides. Not since 1927 had there been so many newcomers up for trial.

Besides these professional novices, there was a sizeable contingent of 1946 rookies who had made good, men such as Jim White, Tex Coulter, Bob Dobelstein and Lou Palazzi.

Then, to balance the squad, there were tested veterans like Len Younce, Chet Gladchuk, Frank Reagan, George Franck, Howie Livingston, et al.—and a battle royal was really on to see who would make up your 1947 Giants.

When the smoke had cleared away, fourteen of the new men remained with the club, the largest number of rookies to make the grade in years. It is significant to note that the combined average age of this group is only 24 years, as against the 27-year average of the Giant squad as a whole.

A delightful aspect of this new accent on youth is the fact that brand new 23-year-olds like Gene



Tex Coulter

Roberts, the Chattanooga Choo-Choo, and John Cannady are even senior to that "grizzled veteran", Tex Coulter, now only 22 and still growing. The big end from Army and Bill Hachten, the new guard from Stanford, are the babies of the squad.

The Giants have big plans for the future and they feel they have a solid foundation for good teams at the Polo Grounds for many years to come in their imposing array of up-and-coming rookies and still-developing stars.

You can safely bet that there'll be another prize crop of newcomers on hand when the Giants start training next year. Wellington Mara and his corps of scouts have their eyes on many outstanding college players, including several prize catches who won't figure in the draft.

This by no means is meant to be a "Wait until next year" story. The Giants have not yet played the football they are capable of but their youngsters are improving with each start and one of these days some unwary opponent will find that they have suddenly come of age.

## GIANTS' HOME SCHEDULE

Today, Nov. 9 . . . . . Philadelphia Eagles  
Sunday, Nov. 23 . . . . . Green Bay Packers  
Sunday, Nov. 30 . . . . . Chicago Cardinals  
Sunday, Dec. 7 . . . . . Washington Redskins

1920—28th Year, National Football League—1947

This Book is Published by HARRY M. STEVENS, Inc.  
Executive Offices: 320 Fifth Avenue, New York City

*They suit me to a "T"*



*The Choice  
of Experience*

# Paul Governali, Passer Par Excellence, Achieves Giant of Week Designation



Paul Governali

**T**O Pitching Paul Governali goes the citation of Giant of the Week. It was a fine throw by Paul to George Cheverko which gave the New York team its touchdown in the setback in Detroit.

The Giants were on the Lions' 20 when Paul heaved the ball to George. Then reliable Ken Strong kicked the point.

Sharing the laurel in the scoring exploit was Choo Choo Roberts, who cut loose with a 40-yard run to put the ball on the Lions' twenty.

Governali stood out all afternoon in Detroit as the Giants completed 19 passes in 47 tries, for a total of 283 yards. This performance helped Stout Steve Owen's outfit to pile up no fewer than 17 first downs.

Governali took command right from the opening kickoff and it was his accurate pitching which made the Giants look like winners in the first ten minutes of competition.

Fine throws by Pitching Paul to Howie Livingston sent the New York team to Detroit's six-yard mark. But there things went awry, and Governali's work went for naught.

In the third quarter Governali's passes sent the Giants to Detroit's 20 yard line, but there things broke badly again as the luckless New Yorks failed to cash in on yet another opportunity.

The officials handed out the record number of 22 penalties for a record total of 254 yards, with the Giants suffering no fewer than a dozen fines for 150 yards.

The Giants gained enough ground to win nine games out of ten. They picked up 120 rushing and, with that 283 overhead, piled up 403 yards. The Lions ran for only 66, and had a total of 346. Yet the Giants lost the decision.

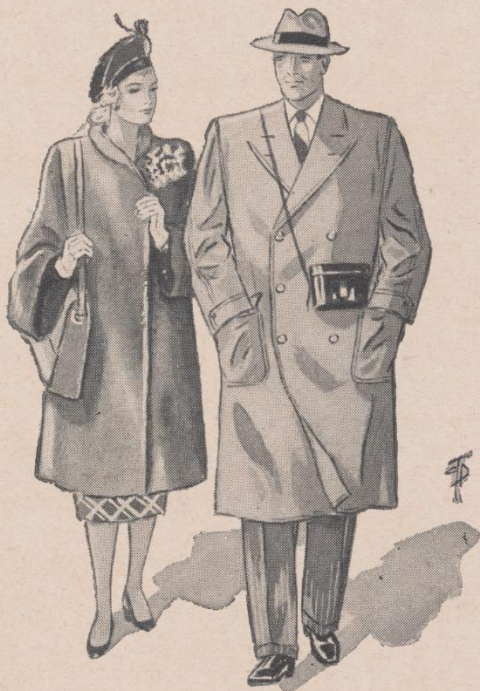
## ABOUT THE MARINES

The ceremony being held on the field today before the game celebrates the 172nd Anniversary of the Marine Corps on November 10, and will initiate an intensive Marine Corps Reserve recruiting campaign for the next 90 days.

Recognizing the need for strong Reserve components to supplement the ground and air organizations of the Regular Marine Corps, the Congress has directed that a Reserve of 100,000 enlisted men be fully established by January 30, 1948. In line with this directive, a goal of 10,000 enrollees for the inactive Volunteer Marine Corps Reserve, has been set in New York City.

Be a Citizen Marine. Enroll in the Inactive Reserve. Call RE 2-9100 Ext. 773 or apply to Room 1505, Federal Office Building, 90 Church Street, New York 7, New York.

*That Rogers Peet look!*



## Quality!

That Quality look in Rogers Peet Clothes is something more than the Quality of fine woollens.

The style-genius of the *modern* Rogers Peet enters into it. So does the character of our kind of tailoring.

Equally important is the "perfection of fit" as we have developed it through years and years of experience.

*Styles for young men, and men who never grow old.*

**Rogers Peet  
Company**

*Makers of Fine Clothes*


*In New York:*  
Fifth Avenue  
at 41st Street

Thirteenth St.  
at Broadway

Warren Street  
at Broadway

*And in Boston:* Tremont St. at Bromfield St.


**TACKLE  
A COCKTAIL  
at the bar of**



*Majors*  
**CABIN GRILL**

**33 WEST 33rd STREET**  
*between Broadway & Fifth Avenue*

**GET INTO A HUDDLE  
WITH YOUR FRIENDS  
over our nationally famous  
CHARCOAL BROILED  
STEAKS**



**"GLORIFYING THE  
AMERICAN GRILL"**

*Douglas gives you . . .*

**HIGH QUALITY AT FAIR PRICES**



Style **CRUISER**  
No. 6628

**\$9.45**



Style **CAMPUS**  
No. 6607

**\$9.45**



The Hand of a Master Craftsman is Behind This Trusted Trademark

**Douglas Shoes**  
W.L. DOUGLAS SHOE CO., BROCKTON 15, MASS.

NEW YORK CITY: 144 West 42nd St., 2202 Third Ave., 52 E. Fordham Rd., 1452 Third Ave.—5 Stores in Brooklyn—other stores in Jamaica, Yonkers, White Plains, Jersey City, Union City, Hoboken, Orange, Newark, Paterson and West New York



# STEVE STANDS ON THE RECORD

This is Steve Owen's seventeenth coaching season with the Giants and his twenty-second in all with the New York club, with which he broke in as a player in 1926. Owen-coached Giants won the world championship twice—in 1934 and 1938—and have taken the National League's Eastern Division title eight times.

Up to the start of the 1947 season, the giants had played 193 championship and play-off games under Owen. Of this number, they won 112, lost 67 and 14, while rolling up 2874 points to their opponents' 2039. Curly Lambeau of the Green Bay Packers and George Halas of the Chicago Bears are the only National League coaches who have served longer than Owen.

Stout Steve joined the Polo Grounds club in 1926, one year after it was founded. He made good from the start as a regular tackle and was captain of the 1927 world championship team that won eleven games while losing only one and tying one. This eleven scored 172 points and allowed but 20, still a league record for defensive efficiency.

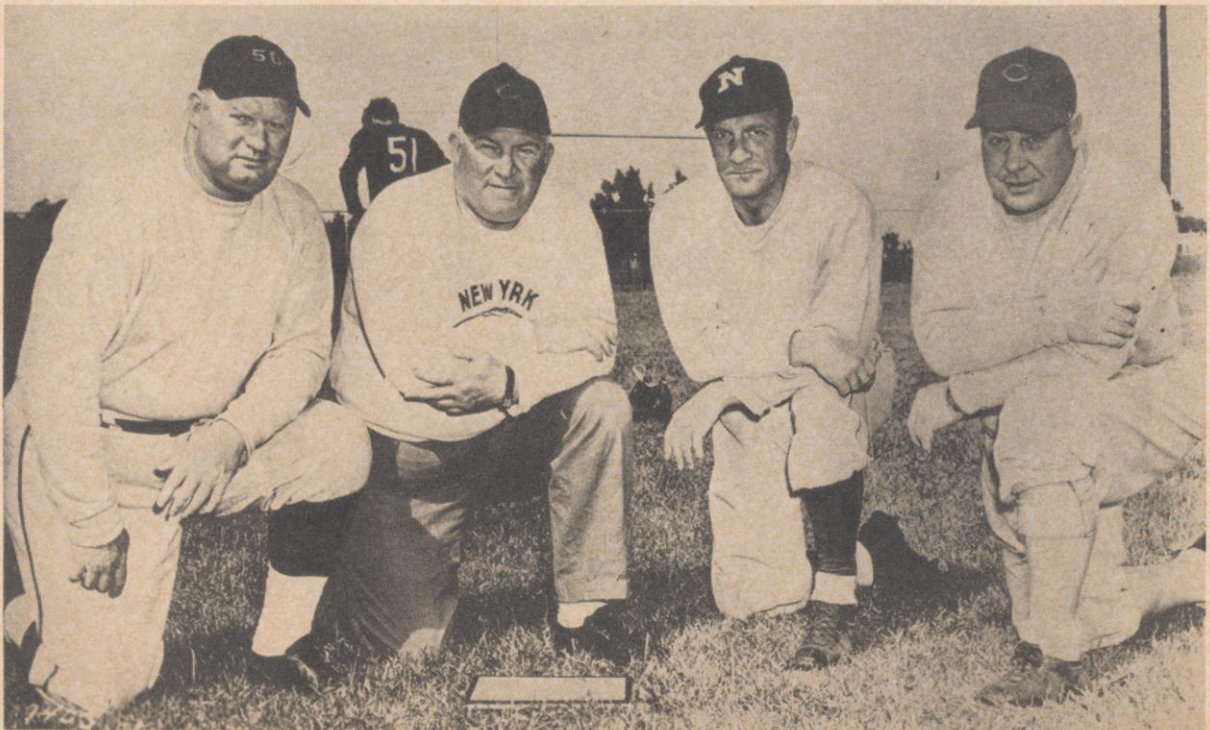
Now 49 years old, Owen was born in Enid, Okla., at that time still pretty wild, wide-open Indian territory. At an early age, Steve displayed unusual skill at riding horses, in those days a

major frontier sport. He actually had youthful ambitions of becoming a professional jockey. However, for reasons now apparent, he soon gave up that idea.

At high school the Giant Coach went in for baseball and wrestling. Summers he worked in adjacent oil fields and put much muscle on his big spreading frame. When World War I broke out, Owen joined the Student Army Training Corps at Phillips University and there was introduced to football by Johnny Maulbetsch, former All-American back at Michigan.

Completing his college career in 1921, Owen returned the next year to coach the line. However, he missed the thrill of combat and jumped at the offer of the Giants. Once he hit New York, his talents soon carried him to the top and now he is recognized the country over as one of the foremost coaches in football, college or pro.

Working with Owen in handling the Giants are Richard (Red) Smith, an old Notre Dame and Giant star who doubles in brass during the baseball season as battery coach of the Chicago Cubs; Mike Palm, a Penn State All-American and another former Giant, and Bill Owen, Steve's younger brother and one of the best Giant tackles of all time.



Left to Right—Bill Owen, Steve Owen, Mike Palm, Red Smith

1920—28th Year, National Football League—1947

# Everybody's Goal!



Enjoyment is everybody's goal, whether it be at the game—or after the game, sipping your favorite drink...made with Three Feathers *pre-war* quality whiskey blended with finest grain spirits. Try this smoother, lighter, richer whiskey today!

## THREE FEATHERS

*Reserve*

SINCE 1882... FIRST AMONG FINE WHISKIES



Blended Whiskey 86 proof. 65% grain neutral spirits. Three Feathers Distributors, Inc., New York

**TICKETS ON SALE NOW FOR  
ALL GIANT HOME GAMES**

Seats for all 1947 home games  
of the Football Giants  
are now on sale

at

**NEW YORK FOOTBALL GIANTS**  
11 West 42nd St.  
New York 18, N. Y.

Monday thru Friday 9 - 5      Saturdays 9 - 1

and at

**NEW YORK BASEBALL GIANTS**  
104 West 42nd St.  
New York, N. Y.

Monday thru Friday 9 - 5      Saturdays 9 - 12

All Reserved Seats .....\$3.00 each  
(Tax included)

Lower Box Seats .....\$4.00 each

Bleachers .....\$1.25  
(Tax included)

*Send Mail Orders to N. Y. Football Giants,  
11 West 42nd Street, N. Y. 18, N. Y.*

Remaining Games at Polo Grounds

Sunday, Nov. 23—GREEN BAY PACKERS

Sun., Nov. 30—Chicago Cardinals

Sun., Dec. 7—Washington Redskins

*Tickets for November 23rd game  
with the Green Bay Packers are on sale  
today at the booth in the rear of Section  
16 of the Lower Grandstand.*

**GREEN BAY PACKERS  
HERE NOVEMBER 23rd**



Ward Cuff

The Green Bay Packers, once again a devastating power after a couple of years of comparative decline, invade the Polo Grounds November 23 for the twenty-fifth game of one of professional football's most colorful rivalries. It is their first visit to the Big Town since 1945.

Curly Lambeau, the old Notre Damer who has been the guiding genius of the Packers since their organization in 1921, has come up with one of his best clubs ever—and that is saying a lot, for over the years Green Bay ranks among the top two or three teams in the National League.

Operating now from a winged-T formation, the Packers have recovered the offensive punch they temporarily lost with the retirement of the great Don Hutson two years ago. They have great all-around personnel and, as usual, their blocking and tackling is of the bone-crushing variety that causes the stoutest-hearted foes to shudder.

Green Bay's new aerial combination consists of Indian Jack Jacobs and Clyde Goodnight. The effectiveness of this pair is reviving memories of the famous Herber-to-Hutson and Isbell-to-Hutson batteries. Ted Fritsch, all-league fullback in 1946, heads a great corps of running backs that includes Tony Canadeo, Bruce Smith, Bob Forte, Roy McCay and Irv Comp. The veteran Ward Cuff, a Giant favorite for many years, is on hand to kick the points and field goals. The Packer line is big and fast.

It is always one of the best shows in football when the Giants and Packers get together. The books are virtually balanced in their rivalry to date, the Packers having won twelve games, the Giants eleven and one tie having been played. Discriminating football fans never pass up this game. Be smart and get your tickets early.

# PHILADELPHIA EAGLES — THREE DEEP

STA  
T  
2:05

<b>L. E.</b> PIHOS (35) Ferrante (83) Green (89)	<b>L. T.</b> SEARS (79) Douglas (71) McDowell (88)	<b>L. G.</b> WYHONIC (66) Kilroy (76) Weedon (60)	<b>C.</b> LINDSKOG (52) Williams (51) Wojciechowicz (53)	<b>R. G.</b> PATTON (65) Maronic (61)	<b>R. T.</b> WISTERT (70) Campion (72) Kekeris (77)	<b>R. E.</b> HUMBERT (81) Armstrong (80) Prescott (86)
<b>Q. B.</b> THOMPSON (11) Sherman (10) Mackrides (39)	<b>L. H.</b> VAN BUREN (15) Steinke (41) Pritchard (30) McHugh (49)	<b>R. H.</b> STEELE (37) Craft (33) Maciosczyk (31) Doss (45)	<b>F. B.</b> MUHA (36) Kish (44)			

## PHILADELPHIA EAGLES ROSTER

No.	Player	Position	Weight	Height	Age	College	Years Pro
10	Sherman, Al	QB	175	5:10	24	Brooklyn	5
11	Thompson, Tom	QB	197	6:01	31	Tulsa	6
15	Van Buren, Steve	HB	205	6:01	26	L.S.U.	4
30	Pritchard, Bosh	HB	165	5:11	28	V.M.I.	3
31	Maciosczyk, A.	FB	215	5:10	26	W. Michigan	2
33	Craft, Russ	HB	175	5:09	26	Alabama	2
35	Pihos, Pete	E	220	6:02	23	Indiana	1
36	Muha, Joe	FB	205	6:01	26	V.M.I.	2
37	Steele, Ernie	HB	180	6:00	29	U. of Washington	6
39	Mackrides, Bill	QB	187	5:11	22	U. of Nevada	1
41	Steinke, Gil	HB	172	6:00	28	Texas A. & I.	3
44	Kish, Ben	FB	212	6:01	30	Pittsburgh	7
45	Doss, Noble	HB	180	6:00	27	Texas U.	1
49	McHugh, Pat	HB	165	5:11	27	Georgia Tech	1
51	Williams, Boyd	C	207	6:02	25	Syracuse	1
52	Lindskog, Vic	C	204	6:01	30	Stanford	4
53	Wojciechowicz, A.	C	235	6:00	32	Fordham	9
60	Weedon, Don	C	215	5:11	26	Texas U.	1
61	Maronic, Duke	G	212	5:09	26	None	4
65	Patton, Cliff	G	255	6:02	23	T.C.U.	2
66	Wyhonic, John	G	218	6:00	27	Alabama	2
70	Wistert, Al	T	216	6:02	26	Michigan	5
71	Douglas, Otis	T	224	6:00	36	Wm. and Mary	2
72	Campion, Turk	T	228	6:02	26	S.East. Louisiana	1
76	Kilroy, Frank	G	245	6:02	26	Temple	5
77	Kekeris, Jim	T	275	6:01	23	Missouri	1
79	Sears, Vic	T	236	6:03	29	Oregon State	7
80	Armstrong, Neil	E	190	6:02	21	Okla. A. & M.	1
81	Humbert, Dick	E	175	6:02	28	Richmond U.	4
83	Ferrante, Jack	E	200	6:01	30	None	5
86	Prescott, Ace	E	195	6:01	25	Hardin-Simmons	2
88	McDowell, Jay	T	220	6:02	27	U. of Washington	2
89	Green, John	E	190	6:01	25	Tulsa	1

Head Coach.....Earle (Greasy) Neale, W. and J.

Backfield Coach.....Charles Ewart, Yale

Line Coach..John Kellison, West Virginia Wesleyan

SHAEMAS O'SHEEL has switched to Calvert because Calvert is smoother... CLAYTON COS  
(of 44 West 8th Street, New York, N. Y.) (of 2436 Broadway, Toledo)

to Calvert because Calvert tastes better... CARL SCHRAIBMAN has switched to Calvert because  
(of 414 Meeting Street, Charleston, S. C.)

Manhattan... WILLIAM F. SCHOFIELD has switched to Calvert because Calvert makes a light  
(of 801 W. Market St., Scranton, Pa.)

Fashioned... A. J. HASSON has switched to Calvert because Calvert is smoother... MORRIS  
(of 12 Henry Street, Brookline, Mass.) (of 508 N. ...)

switched to Calvert because Calvert is lighter... PRESTON COOK has switched to Calvert because  
(of 1727 Hermosa Street, Algiers, La.)

ARTING  
TIME

# NEW YORK GIANTS—THREE DEEP

5 P.M.

<b>L. E.</b>	<b>L. T.</b>	<b>L. G.</b>	<b>C.</b>	<b>R. G.</b>	<b>R. T.</b>	<b>R. E.</b>
<b>COULTER (79)</b> Liebel (88) Carroll (90)	<b>SCHULER (75)</b> Cope (1)	<b>DOBELSTEIN (67)</b> Hachten (66)	<b>GLADCHUK (51)</b> Cannady (20) DeFilippo (55)	<b>YOUNCE (60)</b> Tobin (62) Lunday (65)	<b>WHITE (77)</b> Ragazzo (71)	<b>POOLE (82)</b> Mead (85) Howell (81)
<b>Q. B.</b>	<b>L. H. B.</b>	<b>R. H. B.</b>	<b>F. B.</b>			
<b>IVERSON (22)</b> Sulaitis (21) Palazzi (57) Miklich (31)	<b>GOVERNALI (41)</b> Reagan (44) Livingston (10) Niles (46)	<b>FRANCK (37)</b> Morris (11) Cheverko (17)	<b>BLUMENSTOCK (42)</b> Paschka (33) Roberts (35) Strong (50)			

## NEW YORK GIANTS ROSTER

No.	Player	Position	Weight	Height	Age	College	Years Giant
1	Cope, Frank	T	240	6:02	31	Santa Clara	10
10	Livingston, Howie	B	190	6:01	25	Fullerton	4
11	Morris, Bobby	B	180	5:11	23	U.S.C.	1
17	Cheverko, George	B	195	6:02	26	Fordham	1
20	Cannady, John	C	220	6:01	23	Indiana	1
21	Sulaitis, Joe	B	210	6:02	26	Dickinson HS	4
22	Iverson, Chris	B	210	6:02	27	Oregon	1
31	Miklich, Bill	B	208	6:00	26	Idaho	1
33	Paschka, Gordon	B	220	6:00	27	Minnesota	1
35	Roberts, Gene	B	188	5:11	23	Chattanooga	1
37	Franck, George	B	185	6:00	28	Minnesota	4
41	Governali, Paul	B	195	5:11	26	Columbia	1
42	Blumenstock, Jim	B	190	5:10	28	Fordham	1
44	Reagan, Frank	B	180	6:00	27	Pennsylvania	3
46	Niles, Jerry	B	195	6:01	27	Iowa	1
50	Strong, Ken	B	210	6:00	40	N. Y. U.	9
51	Gladchuk, Chet	C	255	6:04	30	Boston College	3
55	DeFilippo, Lou	C	235	6:01	30	Fordham	4
57	Palazzi, Lou	B	200	6:00	26	Penn State	2
60	Younce, Len	G	210	6:01	30	Oregon State	5
62	Tobin, George	G	205	5:10	26	Notre Dame	1
65	Lunday, Ken	G	225	6:03	33	Arkansas	7
66	Hachten, Bill	G	210	6:00	22	Stamford	1
67	Dobelstein, Bob	G	212	5:11	25	Tennessee	2
71	Ragazzo, Phil	T	225	6:02	31	West. Reserve	3
75	Schuler, Bill	T	215	6:00	25	Yale	1
77	White, Jim	T	228	6:02	26	Notre Dame	2
79	Coulter, Tex	E	262	6:04	22	West Point	2
81	Howell, Jim Lee	E	220	6:06	31	Arkansas	8
82	Poole, Ray	E	215	6:03	25	Mississippi	1
85	Mead, John	E	210	6:03	25	Wisconsin	2
88	Liebel, Frank	E	220	6:01	28	Norwich	6
90	Carroll, Vic	T	240	6:04	33	Nevada	4

Head Coach.....Steve Owen, Phillips U.  
Assistant Coach..Richard (Red) Smith, Notre Dame  
Line Coach.....Bill Owen, Phillips U.

Backfield Coach.....Mike Palm, Penn State  
Trainers.....Gus Mauch, Charley Porter  
Physician.....Francis J. Sweeny, M.D.

Dentist.....Arthur G. Croker, D.D.S.

STELLO has switched to Calvert because Calvert is lighter . . . JOHN WODNIK has switched  
(of 610 East 6th Street, Pueblo, Colorado)

Calvert is mellower . . . PAUL JONAS has switched to Calvert because Calvert makes a smoother  
(of 253 Birchwood Rd., West Englewood, N. J.)

ter highball . . . JACK A. BERG has switched to Calvert because Calvert makes a mellower Old  
(of 4912 No. Clark St., Chicago, Ill.)

RIS FRIEDMAN has switched to Calvert because Calvert tastes better . . . BOB GREENEY has  
(of 31 Grandview Ave., Stamford, Conn.)

use Calvert is mellower . . . GUS PETERS has switched to Calvert because Calvert is smoother . . .  
(of 4308 No. Wilson Dr., Shorewood, Wisc.)

Calvert "Reserve" Blended Whiskey, 86.8 Proof, 65% Grain Neutral Spirits. Calvert Distillers Corp., N. Y. C.

# DOWN THE YEARS WITH THE GIANTS

## ALL-TIME RECORD

Year	Won	Lost	Tied	Pct.	Standing	Coach
1925	8	4	0	.667	4th	Robert Folwell
1926	8	4	0	.667	7th	Joseph Alexander
1927	11	1	1	.917	1st	Earl Pottinger
1928	4	7	2	.364	6th	Earl Pottinger
1929	12	1	1	.923	2nd	LeRoy Andrews
1930	13	4	0	.765	2nd	LeRoy Andrews
1931	6	6	1	.500	5th	LeRoy Andrews*
						Steve Owen
1932	4	6	2	.400	5th	Steve Owen
1933	11	3	0	.786	1st(a)	Steve Owen
1934	8	5	0	.615	1st(b)	Steve Owen
1935	9	3	0	.715	1st(c)	Steve Owen
1936	5	6	1	.454	3rd	Steve Owen
1937	6	3	2	.667	2nd	Steve Owen
1938	8	2	1	.800	1st(d)	Steve Owen
1939	9	1	1	.900	1st(e)	Steve Owen
1940	6	4	1	.600	3rd	Steve Owen
1941	8	3	0	.727	1st(f)	Steve Owen
1942	5	5	1	.500	3rd	Steve Owen
1943	6	3	1	.667	2nd#	Steve Owen
1944	8	1	1	.889	1st(g)	Steve Owen
1945	3	6	1	.333	3rd	Steve Owen
1946	7	3	1	.700	1st(h)	Steve Owen

\* Resigned in mid-season. # Washington defeated Giants 28 to 0 in Divisional Playoff. (a) N. F. L. divided into Eastern-Western Divisions. Bears defeated Giants, Eastern winner, 23-21, for title at Chicago. (b) Giants defeated Bears, 30-13, Dec. 9 at New York. (c) Detroit defeated Giants, 26-7, Dec. 15 at Detroit. (d) Giants defeated Green Bay, 23-17, Dec. 11 at New York. (e) Green Bay defeated Giants, 27-0, Dec. 10 at Milwaukee. (f) Bears defeated Giants, 37-9, Dec. 21, at Chicago. (g) Green Bay defeated Giants, 14-17, Dec. 16 at New York. (h) Bears defeated Giants, 24-14, Dec. 15 at New York.

## ALL-LEAGUE SELECTIONS

Mel Hein, who played fifteen consecutive years with the New York Giants, is accepted as the greatest all-time center, pro or college. The huge former Washington State All-American pivot won more honors than any other of the thousands of players who have represented the leading pro circuit. Hein joined the New York club in 1931. He was selected the second best center in the National League that year and the following season. From 1933 through 1940 the former Giant captain won the No. 1 honors. No other league player came close to matching Hein's remarkable record.

New York Giants who won all-league top honors are shown on the following list:

- 1931—Red Badgro, end; Butch Gibson, guard
- 1932—Ray Flaherty, end
- 1933—Mel Hein, center; Ray Flaherty, end; Harry Newman, quarterback
- 1934—Mel Hein, center; Ray Flaherty, end; Happy Morgan, tackle
- 1935—Mel Hein, center; Happy Morgan, tackle; Ed Danowski, halfback
- 1936—Mel Hein, center; Tuffy Leemans, halfback
- 1938—Mel Hein, center; Ed Danowski, halfback; Ed Widseth, tackle
- 1939—Mel Hein, center; Tuffy Leemans, halfback; Jim Poole, end; John Dell Isola, guard
- 1940—Mel Hein, center
- 1942—Bill Edwards, guard
- 1945—Frank Cope, tackle
- 1946—Len Younce, guard

## GIANT SCORING LEADERS

Player	Years	T.D.	PAT	F.G.	Tot. Pts.
Ken Strong	33-35, 39, 43-46	16	123	34	321
Ward Cuff	37-45	20	100	33	319
Bill Paschal	43-46	27	0	0	162
Dale Burnett	30-39	25	4	0	154
Frank Liebel	42-46	23	0	0	138
Jack McBride	25-28, 32	12	37	6	127
Kink Richards	33-39	19	5	1	122
Tuffy Leemans	36-42	20	0	0	120
Hinkey Haines	25-28	19	3	0	117
Len Sedbrook	29-31	18	0	0	108

## STEVE OWEN'S ALL-GIANT TEAM

Years	Player	Pos.	College
1937-46	Poole, Jim	L. E.	U. of Mississippi
1942-44	Blozis, Al	L. T.	Georgetown
1941-46	Younce, Len	L. G.	Oregon State
1931-45	Hein, Mel (Capt.)	C.	Washington State
1932-34	Gibson, Butch	R. G.	Grove City
1930-33	Hubbard, Cal.	R. T.	Geneva
1928-31	Badgro, Red	R. E.	U. S. C.
1938-40	Falaschi, Nello	Q. B.	Santa Clara
1934-39	Danowski, Ed.	L. H.	Fordham
1936-43	Leemans, Tuffy	R. H.	Geo. Washington
1933-46	Strong, Ken	F. B.	New York U.

For Pleasant Moments...



IF IT ISN'T

PM

IT ISN'T AN EVENING



National Distillers Products Corporation, New York, N. Y.  
Blended Whiskey. 86 Proof. 70% Grain Neutral Spirits.



**JOAN CRAWFORD**  
Lovely Warner Bros. Star

*WHI-SH-SH-SH-SH!!*  
**"It's Moisturized"**  
*To Cut Down Excess Nicotine  
Excess Throat Irritants*



MEDICAL SCIENCE OFFERS  
**PROOF POSITIVE!** NO OTHER  
LEADING CIGARETTE GIVES YOU  
**LESS NICOTINE, LESS THROAT IRRITANTS**



**"903"**

**New Blend! New Taste!  
New Freshness!**

Made by the revolutionary new "903" moisturizing process. Beneficial moisture penetrates every tobacco leaf—gives you a smoother, milder, better smoke! Get new Raleigh "903" Cigarettes today.

Tests certified by a jury of 14 distinguished doctors

*Official timing watch for the*



**GIANTS—EAGLES GAME**

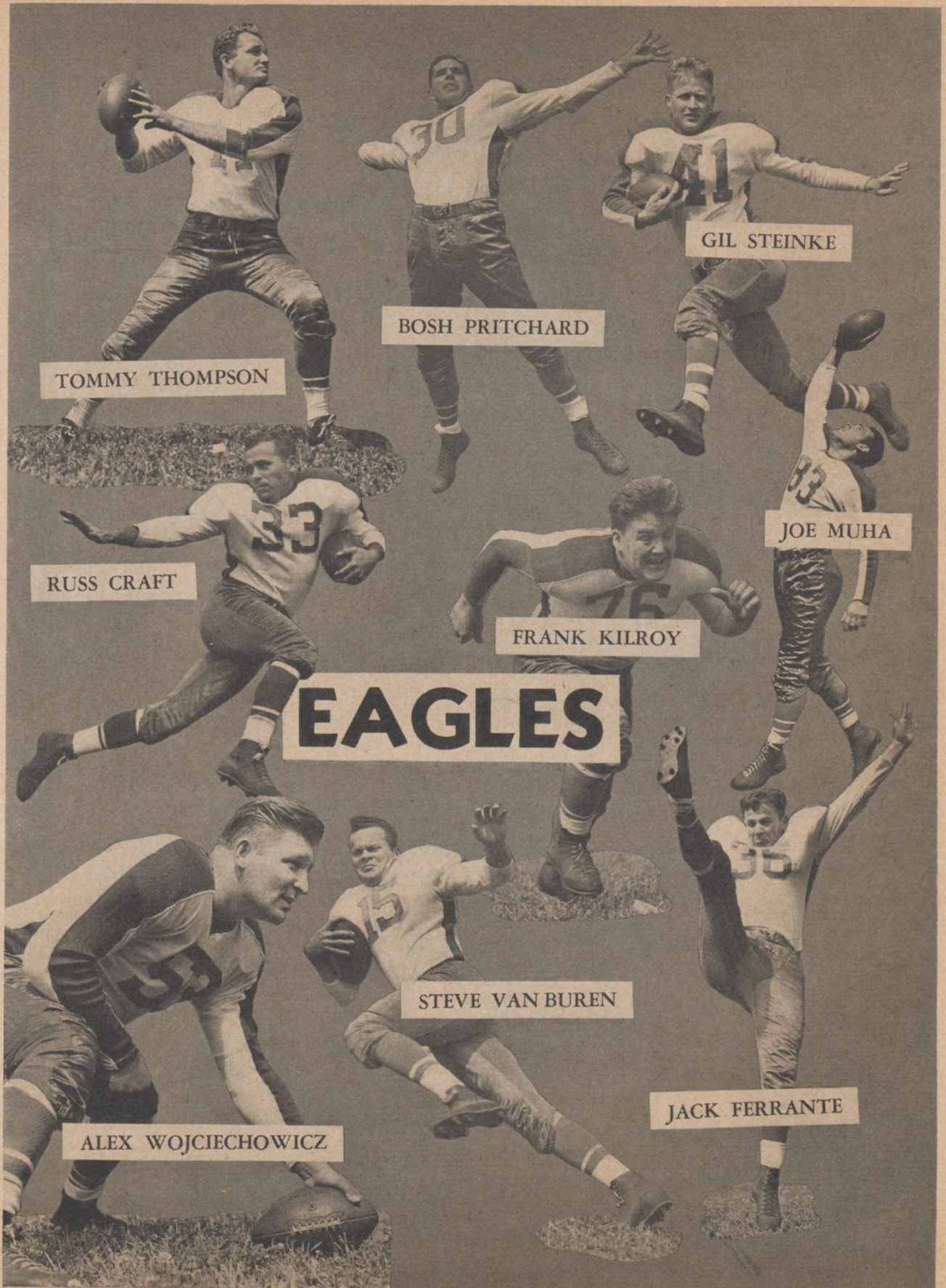
*Longines*

*The World's Most Honored Watch  
winner of 10 world's fair grand prizes,  
28 gold medals, and more honors for  
accuracy than any other timepiece*



*Product of Longines-Wittnauer Watch Co.*





TOMMY THOMPSON

BOSH PRITCHARD

GIL STEINKE

RUSS CRAFT

FRANK KILROY

JOE MUHA

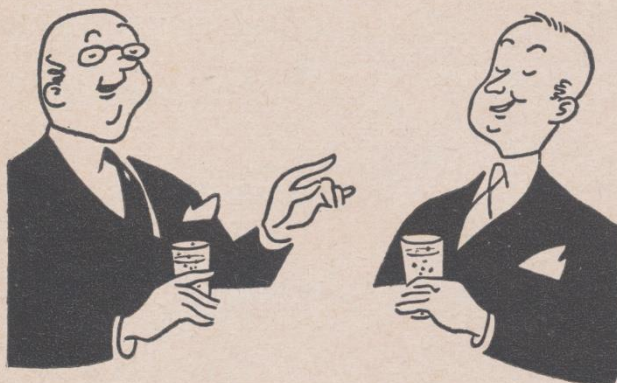
# EAGLES

STEVE VAN BUREN

ALEX WOJCIECHOWICZ

JACK FERRANTE

**AFTER THE GAME...  
ENJOY THE BUBBLE DANCE!**



**PLEASE DON'T KNOCK ANYBODY DOWN** getting to the exit, but at the nearest grill or night spot there's a little treat in store for you.

It's the bubble dance inside every sparkling drop of... but

**DON'T FLIP THIS PAGE**... we've another secret to tell you. This titillating treat won't cost you one red cent more than the rather ordinary mixer you might get if you just look n.æk when you give your order.

**SO WHY CHEAT** that nice palate of yours out of a good time? Give it a break—let it utter: “—and Canada Dry Water” or “—and Canada Dry Ginger Ale, please.”

Pin-point carbonation, you know.

**ON THE WAGON?** “The Champagne of Ginger Ales” will make things a lot easier.



Where There's Life There's

**CANADA DRY**  
WORLD FAMOUS

**GINGER ALE - WATER**

For quick refreshment right now—call the boy!  
Canada Dry products sold here.

**NATIONAL LEAGUE OFFICIALS**

CREW NO. 1

Position	Name and College	No.
Referee	Ronald Gibbs, St. Thomas	5
Umpire	Carl Brubaker, Ohio Wesleyan	14
Head linesman	Dan Tehan, Xavier	36
Field judge	Charles Sweeney, Notre Dame	22
Back judge	Claude Grigsby, Georgetown	46

CREW NO. 2

Referee	William Downes, Illinois Tech	3
Umpire	James Beiersdorfer	17
Head linesman	Sam Pecoraro, Dallas	37
Field judge	William McHugh, DePaul	28
Back judge	Robert Austin, St. Ambrose	44

CREW NO. 3

Referee	Emil Heintz, Pennsylvania	9
Umpire	Samuel Wilson, Lehigh	19
Head linesman	Charles Berry, Lafayette	31
Field judge	Charles Gault, Muhlenberg	39
Back judge	Ray Richards	41

CREW NO. 4

Referee	John Glascott, Pennsylvania	7
Umpire	Harry Robb, Penn State	15
Head linesman	Yans Wallace	34
Field judge	William Grimberg, Villanova	27
Back judge	Carl Reberle, Penn State	8

CREW NO. 5

Referee	Thomas Dowd, Holy Cross	4
Umpire	Joseph Crowley, Muhlenberg	11
Head linesman	Joseph McKenny, Boston College	35
Field judge	Henry Haines, Penn State	21
Back judge	Eugene Miller, Penn State	26

**ALTERNATES**

John Highberger, Carnegie Tech (48); James Hamer, California Teachers (49); Samuel Weiss, Duquesne (2).

**IMPORTANT PENALTIES**

1 Offside, both sides	No Penalty
2 Offside	5 yards
3 Holding, etc., by defensive side	5 yards
4 Man in motion—no shift	5 yards
5 Crawling	5 yards
6 More than three time outs in half	5 yards
7 Running into kicker	5 yards
8 Substitute failing to report	5 yards
9 Delay in putting ball into play	5 yards
10 Starting forward before ball	5 yards
11 Illegal use of hands and arms by offense	15 yards
12 Roughing kicker	15 yards
13 Unnecessary roughness	15 yards
14 Intentional grounding of forward pass	15 yards
15 Unsportsmanlike conduct	15 yards
16 Man in motion on shift	15 yards
17 Interference on forward by passing team	15 yards
18 Clipping from behind	15 yards
19 Pass Interference by defense..1st down at point	
20 Penalty declined	

**FOR THE COMFORT OF ALL**

In order to insure the comfort of all our patrons attending the Giant home games, we earnestly request that all ticket holders enter their seats by way of the entrance ramp leading into *their own sections*. Please avoid walking in front of other sections while going to your seats.

All entrance ramps to sections are well marked and your observation of these signs and cooperation will mean more enjoyment of the game for all of our fans.

**PLEASE COOPERATE**

## 1947 NATIONAL LEAGUE SCHEDULE AND RESULTS

SEPTEMBER 21	
10—Detroit at Pittsburgh.....	14
SEPTEMBER 28	
42—Washington at Philadelphia.....	45
20—Chicago Bears at Green Bay.....	29
21—Detroit at Chicago Cards.....	45
SEPTEMBER 29	
7—NEW YORK at Boston.....	7
48—Los Angeles at Pittsburgh.....	7
OCTOBER 5	
0—NEW YORK at Philadelphia.....	23
26—Pittsburgh at Washington.....	27
21—Detroit at Boston.....	7
7—Chicago Bears at Chicago Cards.....	31
14—Los Angeles vs. Green Bay at Milwaukee.....	17
OCTOBER 12	
20—NEW YORK at Washington.....	28
30—Pittsburgh at Boston.....	14
7—Philadelphia at Chicago Bears.....	40
14—Chicago Cards at Green Bay.....	10
27—Los Angeles at Detroit.....	13
OCTOBER 19	
14—Boston at NEW YORK.....	0
24—Philadelphia at Pittsburgh.....	35
10—Washington vs. Green Bay at Milwaukee.....	27
24—Detroit at Chicago Bears.....	33
7—Chicago Cards at Los Angeles.....	27
OCTOBER 26	
38—Pittsburgh at NEW YORK.....	21
56—Chicago Bears at Washington.....	20
7—Boston at Chicago Cards.....	27
7—Los Angeles at Philadelphia.....	14
17—Detroit at Green Bay.....	34
NOVEMBER 2	
7—NEW YORK at Detroit.....	35
18—Pittsburgh vs. Green Bay at Milwaukee.....	17
38—Philadelphia at Washington.....	14
28—Chicago Bears at Boston.....	24
10—Los Angeles at Chicago Cards.....	17
NOVEMBER 9	
41—Philadelphiat at NEW YORK.....	24
14—Washington at Pittsburgh.....	21
27—Boston at Los Angeles.....	16
17—Green Bay at Chicago Bears.....	20
17—Chicago Cards at Detroit.....	7
NOVEMBER 16	
7—NEW YORK at Pittsburgh.....	24
21—Washington at Detroit.....	38
0—Boston at Philadelphia.....	32
41—Chicago Bears at Los Angeles.....	21
20—Green Bay at Chicago Cards.....	21
NOVEMBER 23	
24—Green Bay at NEW YORK.....	24
7—Pittsburgh at Chicago Bears.....	49
21—Chicago Cards at Washington.....	45
14—Philadelphia at Boston.....	24
17—Detroit at Los Angeles.....	28
NOVEMBER 27	
Chicago Bears at Detroit.....	
NOVEMBER 30	
Chicago Cards at NEW YORK.....	
Pittsburgh at Philadelphia.....	
Washington at Boston.....	
Green Bay at Los Angeles.....	
DECEMBER 7	
Washington at NEW YORK.....	
Boston at Pittsburgh.....	
Chicago Cards at Philadelphia.....	
Los Angeles at Chicago Bears.....	
Green Bay at Detroit.....	
DECEMBER 14	
NEW YORK at Los Angeles.....	
Boston at Washington.....	
Green Bay at Philadelphia.....	
Chicago Cards at Chicago Bears.....	



*"You know, I never really cared much for the sport until you got rid of your '5 o'clock Shadow'"*

## NEW GEM RAZOR with 'GUIDING EYE'

Gives World's First  
Face-Tailored Shave

**\$1.95**

In ultra-modern case with  
supply of Gem Blades.



**NOW**—There are 2 KINDS of GEM blades!



5 for  
**25¢**



GEM SINGLEEDGE—Super-sturdy, he-man blade. Heavy steel holds a deep wedge-edge! Fits all Gem Razors.

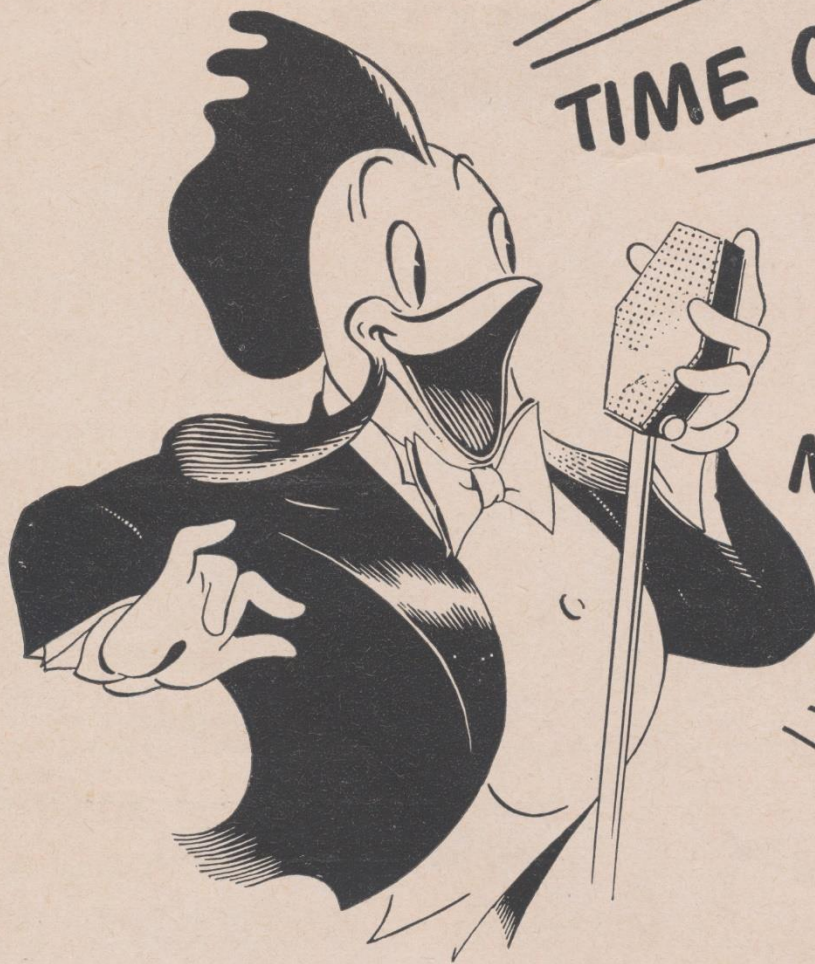
GEM TWO-EDGE REVERSIBLE—Two keen, clean numbered edges. Fits Gem Micromatic Razors only.



AVOID '5 O'CLOCK SHADOW' WITH

# GEM

Gem Division, American Safety Razor Corporation, Brooklyn 1, N. Y.



**TIME OUT...**

**FOR  
SUNNY  
MORNING  
FLAVOR**

# SCHENLEY

**Top-Scorer  
in America's Favor**

*Rare Pre-War Quality Blended Whiskey*

86 proof. 65% grain neutral spirits. Copyright 1947, Schenley Distillers Corp., N. Y. C.



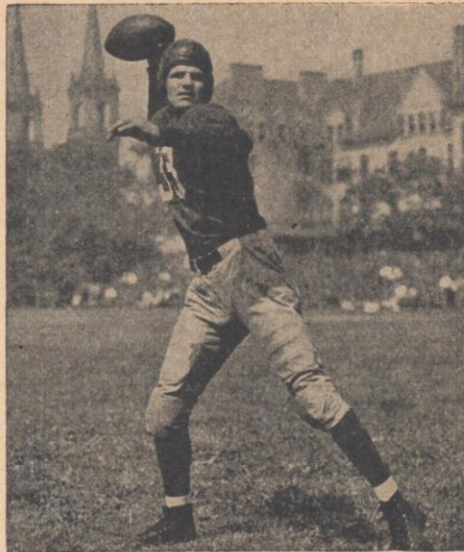
# BIG DOINGS AHEAD



Marshall Goldberg

Today's battle between the Giants and the Philadelphia Eagles is just a foretaste of what is still to come this season for the thousands of football fans who, over the last twentythree years, have developed the pleasant habit of dropping in at the Polo Grounds on autumn Sundays.

Next Sunday, the Giants go on the road again. They have a date with the Steelers at Pittsburgh. However, two weeks from today and on the next



Sammy Baugh

two succeeding Sundays, they will be doing business at their home stand against three of the most interesting teams in the National League.

Leading off in the invasion of the Polo Grounds will be the Green Bay Packers, described by Giant Scout Jack Lavelle as "the best team I have seen this year." Following the Packers into town on Nov. 30 will be the Chicago Cardinals, with their "dream backfield" headed by the dazzling Charlie Trippi, Pat Harder, Paul Cristman and Marshall Goldberg.

Then, in the Dec. 7 windup of their home campaign, the Giants will tackle the Washington Redskins in the renewal of a rivalry that is as ferocious as Army-Notre Dame, Army-Navy or any other than you can name.

Besides the incomparable Sammy Baugh, better than ever in his eleventh season of record-breaking aerial artistry, the Redskins will bring to the Polo Grounds, for the first time since before the war, their famous 100-piece band. With Braves in full war regalia whopping it up all over the field, there'll be a hot time at the Polo Grounds on Dec. 7.

For the best in football entertainment, you can't afford to miss these four-star attractions at the Polo Grounds. Remember the dates: Nov. 23, the Green Bay Packers; Nov. 30, the Chicago Cardinals; Dec. 7, the Washington Redskins. And don't forget to buy your tickets early.

## **FREEPORT BAND TO PERFORM**

The crack marching band that will entertain you before today's game and between the halves is from Freeport High School on Long Island.

This band, which has appeared on invitation at various outstanding sports events over the past few years, is a veritable incubator of musical talent. It is considered one of the finest marching bands in the East and has an impressive list of "firsts" to its credit, including a movie contract and a command performance at West Point.

The drum majorette is Miss Jane Conway, who has won several twirling championships in Nassau County and twice has received "highly superior" rating in State contests. The band's performance will include some of the precision drills and formations that have made it famous. Its director for the past thirteen years has been J. Maynard Wettlaufer.

# STEELERS AND CARDINALS SETTING HOT PACE IN NATIONAL LEAGUE SECTIONAL COMPETITION

AS the Giants resumed play in the National League race today, with Philadelphia the opposition, the Pittsburgh Steelers and the Chicago Cardinals were setting a hot pace in the sectional competitions.

Dr. John Sutherland's Pittsburgh club, which last Sunday nosed out Green Bay, 18 to 17, was a victory in front of the Philadelphia Eagles in the Eastern half. The Steelers showed 5 won and 2 lost, without a tie, while the Eagles, who last week trounced the Redskins, 38 to 14, showed 4 successes and 2 setbacks, minus a deadlock.

In the Western division, the Cardinals who last Sunday beat Los Angeles, 17 to 10, have an even better record than the Steelers. The Cardinals have won 5 and lost only one. Their lone setback came against the Rams, 27 to 7.

With the Cardinals on top and the Bears only one game behind, Chicago is having its most eventful professional football season.

The Bears boast the best offensive record in the National League, with 184 points. Pittsburgh's 171 is tops in the East. The Los Angeles club has the best defensive record, as it has allowed only 75 points. Boston's 113 is low in the East.

## National League Standings

### EASTERN DIVISION

	W.	L.	T.	PC.	Pts.	
					For	Agst.
Pittsburgh .....	5	2	0	.714	171	161
Philadelphia .....	4	2	0	.667	151	138
Washington .....	2	4	0	.333	141	212
Boston .....	1	4	1	.200	73	113
NEW YORK .....	0	5	1	.000	55	145

### WESTERN DIVISION

Chicago Cards .....	5	1	0	.833	141	82
Green Bay .....	4	2	0	.667	134	93
Chicago Bears .....	4	2	0	.667	184	135
Los Angeles .....	3	3	0	.500	133	75
Detroit .....	2	5	0	.286	141	170

## GIANTS LEAD EAGLES IN ALL-TIME SERIES

Although the Giants hold a wide edge in their all-time rivalry with the Eagles, having won nineteen and tied one of the twenty-seven games played between the teams since 1933, it has been a very even series since Earl (Greasy) Neale came to Philadelphia in 1941.

Steve Owen's best friend—off the field—has beaten the Giants four times and held them to a tie once in eleven games. Before Neale got his club organized, the Giants beat the Eagles twice in 1941 and 1942 but it has been a different story since 1944 when Philadelphia resumed operation on its own after a wartime merger with Pittsburgh in 1943.

The Eagles beat the Giants and tied them in 1944, broke even with them in 1945 and 1946 and took the first game of this year's home-and-home series, 23-0, at Philadelphia a month ago.

With the development of the Eagles into a topflight power under the guidance of the canny Neale, the New York-Philadelphia rivalry has come to be one of the hottest in the National League.

Nothing delights either club more than beating the other and they go all out whenever they meet. The Giants-Eagles game is a game where no quarter is asked and none is given.

The New York-Philadelphia series record:

1933—New York 56, Philadelphia 0. New York 20, Philadelphia 14.
1934—New York 17, Philadelphia 0. Philadelphia 6, New York 0.
1935—New York 10, Philadelphia 0. New York 21, Philadelphia 14.
1936—Philadelphia 10, New York 7. New York 21, Philadelphia 17.
1937—New York 16, Philadelphia 7. New York 21, Philadelphia 0.
1938—Philadelphia 14, New York 10. New York 17, Philadelphia 7.
1939—New York 13, Philadelphia 3. New York 27, Philadelphia 10.
1940—New York 20, Philadelphia 14. New York 17, Philadelphia 7.
1941—New York 24, Philadelphia 0. New York 16, Philadelphia 0.
1942—New York 35, Philadelphia 17. New York 14, Philadelphia 0.
1944—Philadelphia 24, New York 17. New York 21, Philadelphia 21 (tie).
1945—Philadelphia 38, New York 17. New York 28, Philadelphia 21.
1946—Philadelphia 24, New York 14. New York 45, Philadelphia 17.
1947—Philadelphia 23, New York 0. (Points—New York 474, Philadelphia 308).

ESTABLISHED 1853

# CORN EXCHANGE BANK TRUST COMPANY

HEAD OFFICE

William and Beaver Streets

New York

o

74 BRANCHES CONVENIENTLY LOCATED IN  
GREATER NEW YORK

Member Federal Deposit Insurance Corporation

## Know the score in flavor!

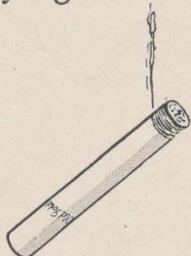
**FIRST  
QUARTER:**

*Simply  
delicious!*



**SECOND  
QUARTER:**

*Mild and  
fragrant!*



**THIRD  
QUARTER:**

*Cool  
as can be!*



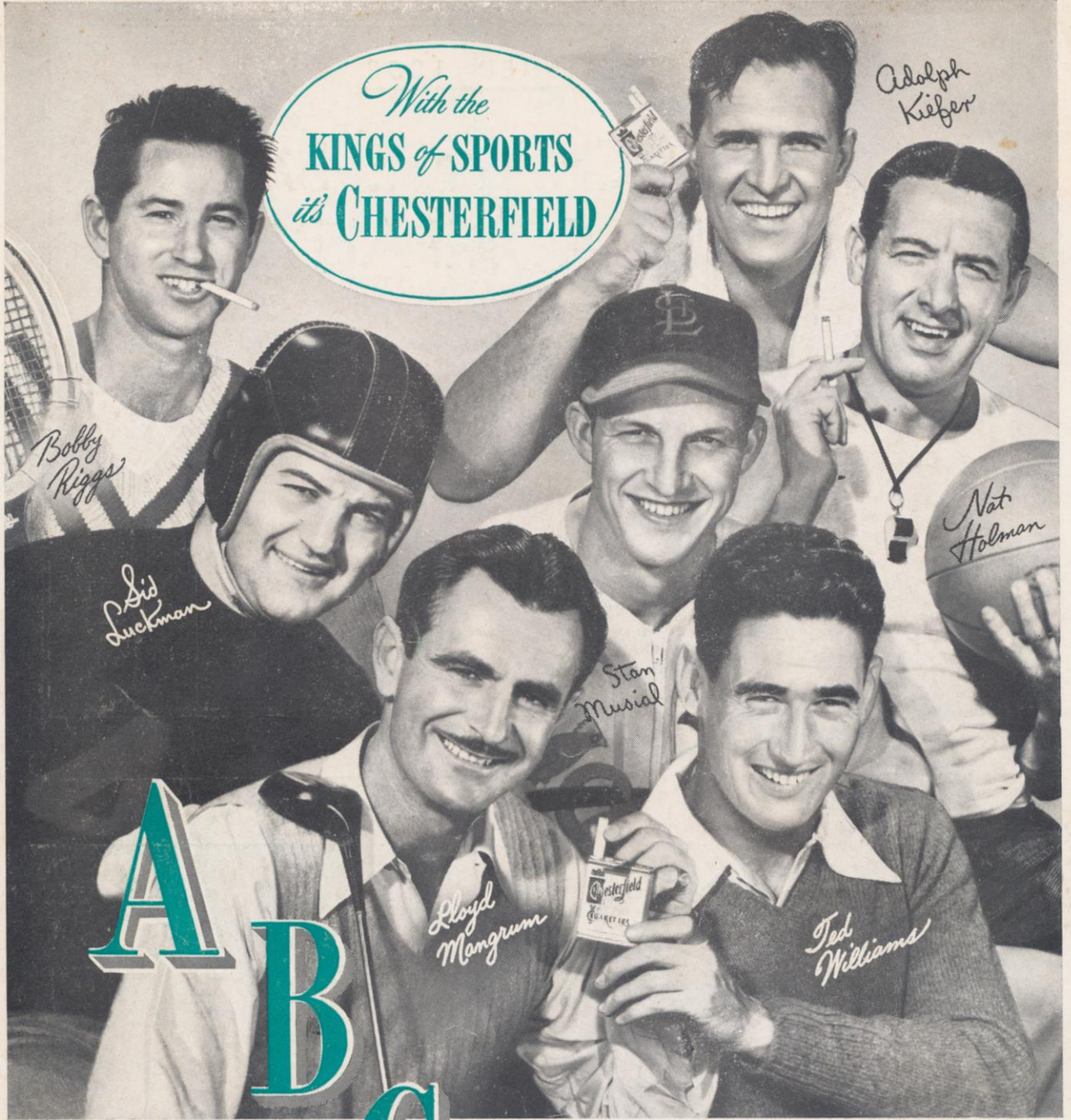
**FINAL  
SCORE:**

*A touchdown  
in taste!*



# Old Gold

With the  
**KINGS of SPORTS**  
it's **CHESTERFIELD**



ALWAYS BUY **CHESTERFIELD**



- A** Always Milder
- B** Better Tasting
- C** Cooler Smoking

*The Sum Total  
of Smoking Pleasure*