

FRANKFORD YELLOW JACKETS

OFFICIAL PROGRAM



Published Weekly By The

FRANKFORD ATHLETIC ASSOCIATION

Member of The National Professional Football League.

Price Ten Cents

If—

Interested in a

PACKARD

See

J. Harry Schumacker

4730 Frankford Avenue

Frankford,

:::

Philadelphia

Frankford A. A. Official Program

Vol. III

SATURDAY, OCTOBER 3, 1925

No. 1

PUBLISHED BY AND IN THE INTEREST OF THE FRANKFORD ATHLETIC ASSOCIATION

PROGRAM COMMITTEE

H. S. ROYLE, *Chairman*
MARSHALL BAINBRIDGE, JR.

EDWARD B. FRANCE
WILLIAM L. M. HEYS

OFFICERS AND DIRECTORS

H. SHEPPARD ROYLE, *President*
LEWIS F. CASTOR, JR., *Financial Secretary*

FRANK HOLLINGSWORTH, *Vice-President*
ROBERT HAINES, *Treasurer*

WM. L. M. HEYS, *Recording Secretary*

THEODORE HOLDEN
DR. V. L. BAKER
WALTER GENTRY

LOUIS HUB
FRANCIS MOITZ
JAMES S. McMASTER, JR.
M. BALLENTINE

DAVID MELLOW
ROBERT O'NEILL
RAYMOND SEAVERS

COMMITTEES

GROUND AND HOUSE

Lewis F. Castor, Jr., *Chairman*
Fred Lotz
David Mellow
Jesse Purnell
Max Moitz

FINANCE

Theodore E. Holden, *Chairman*
Robert B. Haines
Frank W. Hollingsworth

PUBLICITY

Louis S. Hub, *Chairman*
William Dallas
Edward France
Lewis F. Castor, Jr.
Marshall Bainbridge, Jr.
Raymond Seavers

EQUIPMENT

Lewis F. Castor, Jr., *Chairman*
David Mellow
Dr. V. L. Baker
James S. McMaster, Jr.

MEMBERSHIP

Ralph Taylor, *Chairman*
Harry Horrocks
Thomas Ashby

TICKET

Lewis F. Castor, *Chairman*
M. Ballentine
A. R. Preston

ENTERTAINMENT

F. Moitz, *Chairman*
J. Harry Hartman
Charles McGough
Joseph Carroll
Dr. V. L. Baker
Fred Baun, Jr.
Max Hilbert
D. Langdon
James Haslam
Edward Winters
William Newton
L. Winsch
Thomas Holden

RECEPTION

Edward Winters, *Chairman*
GUY C. CHAMBERLAIN, *Coach*

BOARD OF MANAGERS

Walter Gentry

Fred Baun, Jr.
A. R. Preston
William Newton

REFRESHMENT

Walter Gentry, *Chairman*
Samuel Bastian

AUTOMOBILE

R. O'Neill, *Chairman*
Albert B. Woodington
John Latimer
Harry Campbell

USHER

Raymond Seavers, *Chairman*
Robert B. Haines
Thomas Ashby

AUDITING

Clarence McBride, *Chairman*
W. I. Bowker
S. Murphy

BUDGET

Robert B. Haines, *Chairman*
Theodore E. Holden
Walter Gentry

Matthew Ballentine

David Mellow

BUILDERS AND BOOSTERS OF FRANKFORD

We Solicit Your Business

WINTZ BROTHERS

BUILDERS

1618 Sellers Street

Both Phones

Frankford

AUTOMOBILE
TIRES TUBES SERVICE
VULCANIZING

George W. Toland

4663 PAUL STREET, FRANKFORD

HORROCKS' COAL

Quality - Service

On Orthodox at Large Street

DODGE BROTHERS
MOTOR CARS

CADILLAC
MOTOR CARS

Chas. J. McGough

4744-46 FRANKFORD AVENUE

Philadelphia, Pa.

Phone, Jefferson 5742-5743

Entwistle's Pharmacy

MEETS YOUR WANTS IN ALL SEASONS

THE PHARMACY FOR ALL PRESCRIPTIONS AND
PHARMACEUTICALS

Agency for Whitman's Chocolates Eaton, Crane and Pike's Stationery

WATERMAN AND SHEAFFER FOUNTAIN PENS

4901 FRANKFORD AVENUE

Frankford, Pa.



“HEY!”

After the Game Eat Supper at

Roesbergs' Cafe

Seating Capacity 250

4403 Frankford Avenue

“Shep” Royle a Prime Factor in Success of Yellowjackets

FRANKFORD PRESIDENT HAS SPONSORED MANY INNOVATIONS
TENDING TO ASSURE HEALTHY GROWTH TO ASSOCIATION

Herbert S. “Shep” Royle, now serving his fifth year as president of the Frankford Athletic Association, is one of the main reasons for the success of the Yellow Jackets, both on the field and financially.

Shep was one of the prime movers in the organization of the athletic association. His activities in that line were so successful that he was elected president and his administration each year has seen the scope of the association grow to such a degree that he never has had opposition for re-election, each time receiving a unanimous vote to remain in office.

It was Mr. Royle who first saw the advantages to be attained by joining the National League of Professional Football Clubs, and it was largely through his efforts that Frankford entered the league. He also saw the necessity of putting a more powerful team on the field and since joining the league the Frankford organization each year has sponsored a team that has been in the running for the championship until the final weeks of the season.



While You Are Enjoying The Game

Remember To Patronize Frankford

CONSULT THE

Frankford Stationery Company

4426 Frankford Avenue

For Your Office Equipment, Stationery, Bank Forms and Ledgers,
All Steel Filing Devices, Mimeographing and Printing.

— REASONABLE RATES —

Greeting Cards

and

Social Stationery

To Best Express Any Sentiment

"Say it with Flowers"

Frankford Flower Shop

4844 Frankford Avenue

Jeff 2937 Marshall Bainbridge, Jr. Prop.

St. James Hotel

13th and Walnut Streets

Special Luncheon

\$1.00

Dinner de Luxe

\$2.00

Rooms for Parties and Banquets

Of Interest to F. A. A. Fans

The Headquarters and Office of the Frankford Athletic Association is in the basement of the Gentry and Otto Building

4740 Frankford Avenue

This office is open daily from 12 noon to 10 P. M. except Saturday when the hours are from 10 to 12 noon. Those not holding Season Tickets may purchase Reserved Seat Tickets for any game at the hours stated above. No seats reserved later than Friday evening of each week. Tickets for game

on sale two weeks in advance.

TICKET PRICES

General Admission	\$1.00
General Admission, (Junior)	.50
Reserved Seats	
North and South Stands	\$1.50
Reserved Seats	
East and West Stands	\$1.25
Reserved Bench Seats	\$2.00
Box Seats (Sold Out)	

PHONE ORDERS PROMPTLY ATTENDED TO
JEFFerson 2197

Yellow Jackets Excursion to New York SUNDAY OCT. 18-1925 FARE \$3.55 & RETURN!

Train leaves Frankford Junction 9 A. M. stopping at Frankford, Bridesburg, Wissinoming, Tacony, Holmesburg Junction Torresdale and Bristol. Returning train leaves New York, Pennsylvania Station, 9 P. M., making the same stops.

Details of the Pottsville excursion will be announced later.

ROBERT O'NEILL, JR.

Transportation Office,
F. A. A.

Before and After

The Game

STOP AT

**WHITE'S
RESTAURANT**

Frankford and Oxford Avenues

Never Closed



Philadelphia's Leading Sea Food Restaurant For 45 Years

A GOOD GAME A GOOD GIRL A GOOD SUIT OF CLOTHES!

WHAT ELSE DOES THE AVERAGE FAN WANT?

You CAN'T TELL the players without a score-card, but you CAN TELL a

"KRAMER" Finest **SUIT** without looking
Made-to-Measure at the label.

You can see that it's PARAMOUNT TAILORING by the style and shape, and by its serving and long wearing qualities. We will give you more dollar for dollar value than you can get elsewhere; make your new suit better than any you have ever worn and at no higher price than you are in the habit of paying.

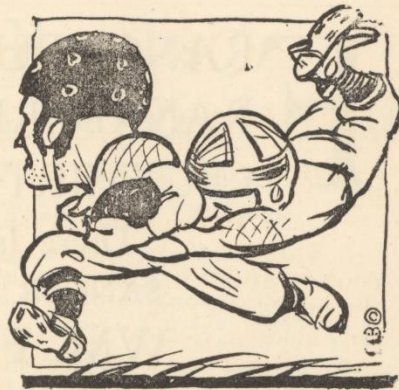
COME IN TODAY!

WM. O. KRAMER

PARAMOUNT TAILORING

Josephine and Kinsey Sts.,
BELL PHONE

Frankford, Phila., Pa.
JEFFERSON 7436



THE NORTHEAST PHILADELPHIA
CHAMBER OF COMMERCE

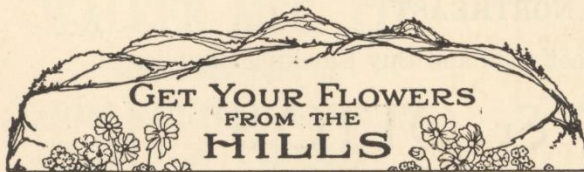
For

THE YELLOW JACKETS

And

THE WHOLE NORTHEAST

"Say it with Flowers"



Flowers have a way of expressing those tender thoughts that we ourselves cannot say or write. Whatever the occasion may be flowers are always appreciated. We can telegraph them anywhere.

FLOWERS FOR ALL OCCASIONS

HILL'S FLOWER SHOP

4465 Frankford Avenue

Bell Phone, Jefferson 4477

Keystone Phone

BELL PHONE, JEFFERSON 7150

KEYSTONE PHONE, EAST 8426

ELECTRIC DYE WORKS

DYERS OF

WARPS, MERCERIZED AND COTTON YARNS AND TAPES
SULPHUR BLACKS A SPECIALTY

3940-50 Frankford Avenue

FRANKFORD,

PHILADELPHIA

FRANCE-BUILT-HOMES
FRANKFORD STANDARD
OR THIRTY-FIVE YEARS

There Is An Operation Now At
SANGER AND HORROCKS STREETS
WM. FRANCE SONS, Inc.

FIXTURE MANUFACTURING
HOUSE WIRING

Bell Phone
Phone Jefferson 6737

SUBURBAN ELECTRIC FIXTURE CO.

1541 FOULKROD STREET

FRANKFORD, PHILA.

ESTIMATES FURNISHED

**FINEST AND BEST EQUIPPED BILLIARD HALL
IN THE NORTHEAST**

Sport Lovers of the District meet, talk and Buy Smoking Supplies at

GENTRY & OTTO'S

WHOLESALE and RETAIL TOBACCONISTS

CUT PRICE ON ALL SMOKERS' SUPPLIES

4740 Frankford Avenue, Frankford

Bell Phone, Jefferson 9620



WILLIAMS BROS.

Printers Engravers

Stationers

KINSEY AND JOSEPHINE STREETS
FRANKFORD

A good place to have your printing done. Ask any of the Williams Brothers to stop in and see you. Always at your service. We are building a business on *Quality Printing plus Service.*

National League Game Results Show Frankford Faces Real Test

TEAMS SCHEDULED AS YELLOW JACKET OPPONENTS LOOMS AS
STRONGEST CONTENDERS FOR NATIONAL PRO CROWN

Results of games played last week-end in the National League reveal much of interest to followers of the Frankford club in doping out what may happen when the Yellow Jackets meet other contenders.

The Canton Bulldogs played Rochester and the Jeffersons represented by the strongest team ever developed at Rochester were downed 14 to 7.

The Dayton Triangles, who are scheduled to appear here on November 17, played a scoreless tie with the Rock Island club, one of the strongest teams in the western sector and a real championship contender.

Detroit downed Columbus 7 to 0 after a rattling good game that was decided in the final few minutes of play after Columbus worked the ball to within striking distance only to have a forward pass intercepted and be scored upon. Columbus displayed the great punch through the game.

The Pottsville Maroons, Frankford's arch rivals, due here on November 14, took the Buffalo Club into camp by a 28 to 0 count. The miners displayed a fine attack, and held the Bisons to one first down.

Green Bay defeated the Chicago Bears in

a rattling good contest by the score of 14 to 10. The battle was a real thriller with both teams living up to advance notices of their respective strengths. Chicago presented virtually the same team that defeated the Yellow Jackets in the final game here last year. Green Bay seems to be a memesis to the Bears. Last year the Chicago outfit also went down to defeat before them.

The resume of games played to date shows Green Bay topping the league with two victories and no defeats and several teams tied for secondary honors with one victory and no defeats.

It also shows that the board of managers of the Yellow Jackets have arranged the toughest schedule on record for the locals this season. No Saturday on the schedule looks like a soft spot, and every game threatens to be a real battle with a championship contender.

HOT DOG! HOT DOG!!
Bow-Wow-Wow
FRANKFORD YELLOW JACKETS
Are the Cat's Meow!

Established 1875

WALKER MFG. CO.

Manufacturers of

LOOM REEDS, HEDDLES,
HEDDLE FRAMES,
ETC.

KENSINGTON AVE AND ONTARIO ST.

Philadelphia, Pa.

The Hennigar Photo Studio

OXFORD AND FRANKFORD AVENUE

Commercial Work Our Specialty

WE GO ANYWHERE ANYTIME

Special Attention Given to Weddings
at our Studio. Family groups, Individual Photos and Baby's.

BELL PHONE, JEF. 2417

"Home Building of the Better Kind"

George R. Osborne & Son
BUILDERS

5014 SAUL STREET

BELL PHONE, JEFFERSON 1145

FRANKFORD, PHILA.

Kinkerter & Sheppard Co.
HARDWARE

TOOLS AND CUTLERY HOUSEFURNISHINGS

CHINA and GLASSWARE LINOLEUMS STOVES

BRIGHT CORNER

FRANKFORD

Margaret Station on the "L"

BECKER'S

Delicious BREAD, CAKES, PIES
and *Fancy Pastry*

CATERING FOR ALL OCCASIONS

4310 Frankford Avenue

PHONE. JEFFERSON 5786

CHRISTIAN E. LEIDICH

BUILDER OF THE BEST COMMERCIAL AUTO BODIES

REPAIRING, PAINTING, LETTERING AND TRIMMING

PAINTING OF PLEASURE CARS A SPECIALTY

4112 Kensington Avenue

FRANKFORD,

BOTH PHONES

PHILADELPHIA

MEMBER FEDERAL RESERVE SYSTEM

NORTHEAST-TACONY BANK & TRUST CO.

Longshore Street and Torresdale Avenue

TACONY, PHILADELPHIA. PA.

Assets Over \$1,750,000

Providence Out to Avenge 1924 Defeats at Hands of Frankford

STEAMROLLERS HAVE ASSEMBLED STRONG AGGREGATION OF
STARS TO COMPETE FOR CHAMPIONSHIP OF NATIONAL
PRO LEAGUE

Providence goes into the game today with a firm determination to wipe out the two defeats suffered at the hands of the Yellow Jackets, and, incidently, inaugurate their National League campaign with a victory.

The Steamrollers have held undisputed possession of the New England professional championship for five years and up until their appearance at the stadium last year had not suffered defeat in four years. The two victories scored by Frankford are the only games on the wrong side of the Providence ledger since 1919.

Providence this year is rated as being much more formidable than the aggregation that represented the Rhode Island city in previous seasons. The line shapes up as being one which should give the husky Frankford forwards all kinds of trouble.

Maloney and McGoldrick are two experienced, aggressive ends. Kodlowski, of Boston College, and Spellman, of Brown, are two tackles who have gone through the fires of a professional campaign and emerged with flying

colors. Shurtleff, of Brown, and Share, of Tufts, are two veteran guards who have made a good record in pro ranks.

But probably the outstanding star of the Steamrollers' forwards is Eckstein, the former Brown center. Several teams in the National League were angling for Eckstein's services, but Providence finally nailed him to a contract. Eckstein is one of the best college centers in recent years and threatens to become a real top notcher among league pivot men.

That the invading backfield is more than ordinary is shown by the fact that Providence in its first game rolled up one hundred and twenty-seven points while holding the opposition scoreless.

Hammill, formerly of Villa Nova, calls signals for the visitors and is reputed to be an exceptional field general as well as a ball totter far above the average. Wentworth, of New Hampshire, and Burke, of Dartmouth, constitute a flashy pair of halfbacks, and Toelman, of Brown, at fullback, breaks into the league heralded as a real find.

ESTABLISHED 1858

THOS. W. SCHUMACHER

Interior Decorator

SHOWROOM AND OFFICE

4411 Frankford Avenue

PHILADELPHIA

FRANKFORD

Phone Jef. 6000

KENSINGTON TRUST CO.

Has Opened A Branch At

BROAD AND ALLEGHENY AVENUE

FOR YOUR CONVENIENCE

Main Banking House

Kensington and Allegheny Avenues

VICTROLAS

KODAKS

GUNS, ATHLETIC AND SPORTING GOODS
OF QUALITY

HOWARD GEORGE

4359 FRANKFORD AVENUE

(At Unity Street)

Established 33 Years

RECORDS

FILMS

**THE INDUSTRIAL TRUST, TITLE &
SAVINGS COMPANY**

1946-52 N. FRONT STREET

ESTABLISHED 1889

CAPITAL, \$500,000

TRUST FUNDS, \$10,000,000

SURPLUS and PROFITS, \$1,800,000

**Important Notice To
Ticket Holders**

Last week at the opening game the crowd far exceeded the number expected to attend and as a result confusion occurred at the gates where the new turnstile system was in operation. Long lines of fans found their admittance to the field was slow. In order to overcome this trouble the management has opened three more gates, two at the main entrance to the field and one gate on the east of WIssinoming side of the field. This gate will be for season tickets only. At the main entrance there will be eight gates, two for general admission, two for season tickets, one for Reserved seats, North and South stands, one for East and West stands seats, one for Boxes and benches seats, and one complimentary gate. Season tickets holders are informed not to use the gate marked Reserved Seats, North and South stands. Signs have been placed over the gates to inform the fans just where to enter.

With the addition of these extra gates the management feels that they will be able to handle the crowds with little or no trouble in the future.

**True Sport - Charity -
Community Spirit**

The management of the F. A. A. takes this opportunity to inform its patrons that the association is purely a community organization and all profits derived from the games, etc., are donated to charity. Ever since the association was organized its policy has been to donate to local charity, and to this end the officers, directors and members of the A. A. give their untiring services and at the same time endeavor to give Frankford and the Northeast a winning football team that will bring prestige to our town. Just keej these two facts in mind, and remember when you attend the games you are not only supporting the team but giving to charity as well.

F. A. A. MANAGEMENT.

F-R-A-N-K-F-O-R-D
F-R-A-N-K-F-O-R-D
F-R-A-N-K-F-O-R-D
YEAaaaaaaa—
Team! Team!! Team!!

YEAaaaaaa—Haws, Haws, HAWS!

Accessories and Oils JAMES E. EMBERY Northeast Distributor for
Regal Cords

**The ● Spot
FOR SERVICE**

Frankford Avenue at Foulkrod Street

PHONE, JEF. 4577

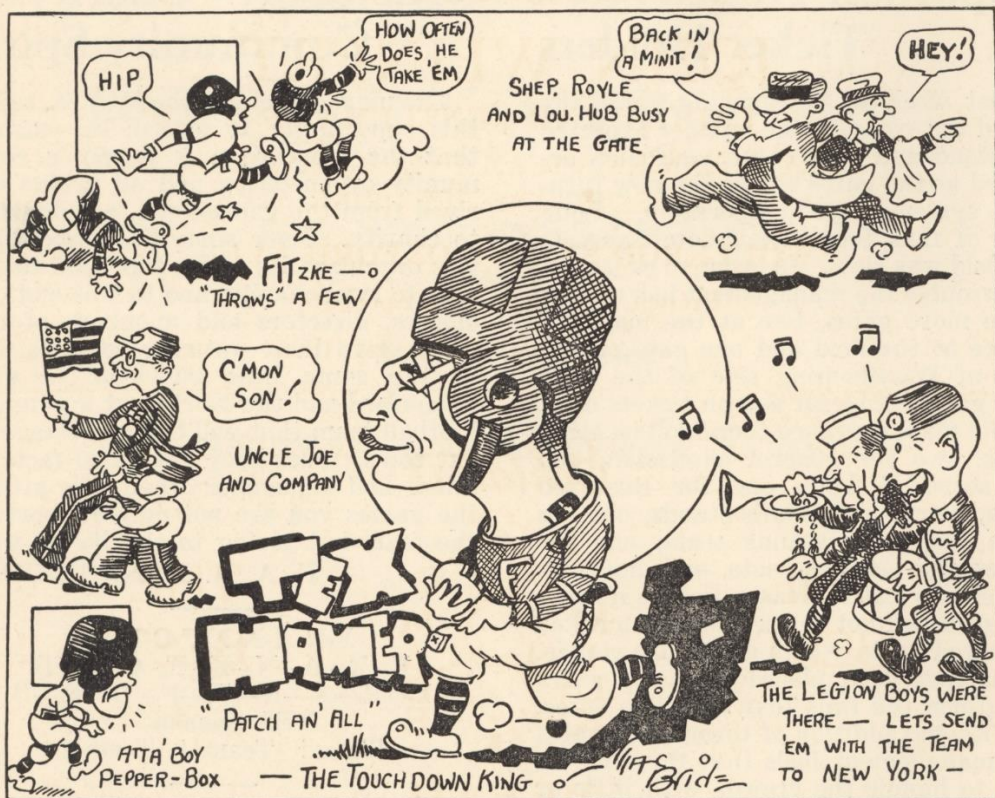
FRANKFORD, PHILA.

ABBOTT & COBB SEEDS

Growers & Importers

Everything for Farm and Garden

4903 Frankford Avenue



Bell Phone Jef. 9796

Radio Supply

You Tried the Rest
Now Try the Best

Its not very far on the Boulevard

Brucks Garage

Roosevelt Blvd. & Whittaker Ave.

2 Blocks West of Sears & Roebuck

Atlantic Gasoline

Tires & Accessories

FOR HOME COOKED MEALS

AND THE

BEST OYSTERS

STOP AT

Ashby's Restaurant

4804 Frankford Avenue

Snapper Soup

Phone, Jefferson 3400

GEORGE T. SALE

REAL ESTATE

If You Want A Home See Us

We Can Finance You

TWO OFFICES

1003 Liberty Building

Oxford and Frankford Avenues

SEE ME BEFORE DYEING

JOHN WEINERT

LADIES' AND GENTLEMAN'S

DRY CLEANING, STEAM DYEING, SCOURING
PRESSING AND REPAIRING

FOULKROD ST. AND OXFORD AVE.

French Dry Cleaning a Specialty

Bell Phone Jef. 1006

Schlater's

THE
BEST



THE
BEST

BREAD

Scotch **ART** Rugs

WM. HENDERSON & CO.

Frankford, Philadelphia

FURNITURE OF THE BETTER KIND

Club Plan If Desired



HUB FURNITURE CO.

Three Stores in Philadelphia

4734 FRANKFORD AVENUE, FRANKFORD
22 and 24 W. CHELTEN AVENUE, GERMANTOWN
and
S. W. COR. 23rd. and SOUTH STREETS

Open Monday, Friday and Saturday Evenings

Gibson-Walker Company

INCORPORATED

LUMBER

LUZERNE and F STREETS

PHILADELPHIA

Russell Behman Elected Captain of Frankford For 1925 Campaign

SELECTION OF FORMER DICKINSON LEADER AND TACKLE CERTAIN
OF SUPPORT OF PLAYERS, OFFICIALS AND TEAM FOLLOWERS

Russell Behman, tackle, has been elected to the captaincy of the Yellow Jackets for the current season. The choice was a popular one with the players and officials of the Association and is certain to find favor with the fans.

The rugged lineman is of the dashing aggressive type that never says "quit" himself and is sure to keep his men on their toes playing the best football they are capable of at all times. In short, Behman is the ideal leader.

The captaincy of a football team is no novelty to "Bull." He served as leader of the Dickinson College eleven in 1923 and while his team broke no world's scoring records and won no major championships, Behman piloted a team of fighters who played real football from whistle to whistle.

Glenn Killinger, of Penn State All-American fame, coached Dickinson that year. He



had ample opportunity to watch Behman in action. Wrote a series of syndicated articles for prominent newspapers throughout the United States, Killinger said that Behman was "the greatest college lineman in the country."

Behman entered professional football well press agented, and he has more than lived up to his advance notices. The playing of the lineman seldom receives the notice that the work of a ball totter does. But Behman's work has stood out so vividly in all Frankford games that even on alien gridirons his work is noted and commented upon.

Two added responsibilities this year have made no material difference in the former Dickinson star. He was married during the off season and he now is the Yellow Jacket leader. He has entered upon his duties as captain with a vim and cheerfulness that has somewhat lightened the load of coach Chamberlain.

Behman herds his flock of players to the stadium each afternoon and sees to it that they are in full football regalia and on the field at the time specified by Chamberlain. His cheerful smile and willingness to work act as an inspiration to the other men at practice and noticeably aid the morale of the team.

BELL PHONES:

JEF. 8944 - TAC. 2238

JAMES HASLAM
REAL ESTATE AND INSURANCE

4345 FRANKFORD AVE.

7057 FRANKFORD AVE.

NOTARY PUBLIC

AUTO TAGS - 48 HOURS

FOR GREATER NORTHEAST

Footballs Used by Yellow

WILLIS.

4626 FRANKFORD
SPORTING GOODS

Line-Up of Both Teams

FRANKFORD YELLOW JACKETS

14—O'CONNELL	Left End	LAFAYETTE
1—BEHMAN (Captain)	Left Tackle	DICKINSON
17—HOFFMAN	Left Guard	LEHIGH
12—SPRINGSTEEN	Center	LEHIGH
15—S. CROWTHER	Right Guard	COLGATE
16—CARTEN	Right Tackle	HOLY CROSS
11—R. CROWTHER	Right End	COLGATE
2—Haws	Quarterback	DARTMOUTH
5—FITZKE	Right Halfback	IDAHO
4—SULLIVAN	Left Halfback	PENN
3—HAMER	Fullback	PENN

13, Chamberlain (Coach), Nebraska; 18, Kauffman, Penn; 10, Seacrist, West Maryland; 9, Burnham, Harvard; 8, Clement, Williams; 7, Wilsbach, Bucknell.

ALVIN A. S.

Lincoln *Ford* Fordson
CARS-TRUCKS-TRACTORS

Commercial Bodies for
Every Requirement



Salesroom, Parts and Service Departments, 41
Don't Fail to See the Ne

ow Jackets Furnished by

GIBSON

ORD AVENUE

VICTROLAS

KODAKS

ams for Today's Game

PROVIDENCE STEAM ROLLERS

2—MALONEY	Right End.....	DARTMOUTH
12—KOZLOWSKI	Right Tackle.....	BOSTON
12—SHURTLEFF	Right Guard.....	BROWN
9—ECKSTEIN	Center.....	BROWN
4—SHARE	Left Guard.....	TUFTS
11—SPELLMAN	Left Tackle.....	BROWN
17—McGOLDRICK	Left End.....	LEHIGH
19—HAMMILL	Quarterback.....	VILLA NOVA
6—WENTWORTH	Left Halfback.....	N. H'SHIRE
3—BURKE	Right Halfback.....	DARTMOUTH
8—POHLMAN	Fullback.....	BROWN

15, Braney, Syracuse; 18, Lowe, Lafayette; 20, Young, North Dakota; 7, Sweet, Brown; McIntosh, R. I. State; 7, Higgins, Brown.

WENSON, Inc.



Largest Dealer in
Northeast Phila.

Lincoln *Ford* Fordson
CARS - TRUCKS - TRACTORS

120-50 KENSINGTON AVENUE, PHILA.

New Cars - Now on Display

"YOU CAN'T LOSE"

Don't take chances in dangerous speculation. Before you risk your money, let this bank give you reliable counsel. Asking our opinion will involve no obligation.

Capital	\$ 280,000.00
Surplus and Undivided Profits	\$ 1,500,000.00
Total Resources	\$ 12,500,000.00

Save your wife the burdens of settling your estate.
Let our Trust Officer explain how we can serve as your executor.
You can discuss this matter without obligation.

SECOND NATIONAL BANK OF PHILADELPHIA AT FRANKFORD

Safe Deposit Boxes for Rent

\$3, \$5, \$7, \$10, \$25

ACTS AS EXECUTOR AND TRUSTEE

INTEREST PAID ON CHECKING AND SAVING ACCOUNTS

EQUIPPED FOR PERSONAL SERVICE

Open Friday Evenings

RALPH HERBERT TAYLOR

ANY KIND

INSURANCE

ANY COMPANY

122 So. 4th STREET

PHILADELPHIA, PA.

SEEKING A SHARE

We Solicit Your Business

GULF GASOLINE AUTO ACCESSORIES SUPPLIES

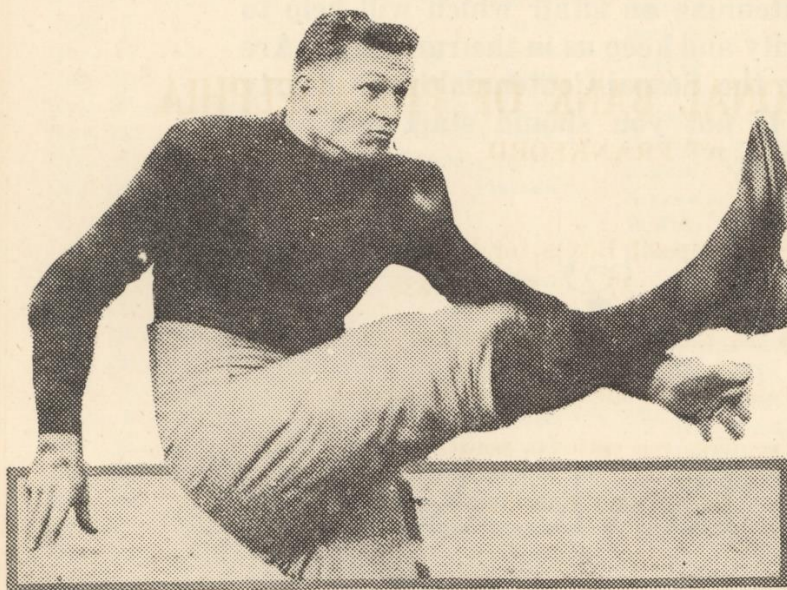
FRANKFORD DISTRIBUTOR
GENERAL CORD TIRES

J. A. RAYNOR

Frankford Avenue at Harrison Street

Hamer Runs Wild in First Game of Yellow Jackets 1925 Season

**FRANKFORD FULLBACK SCORED FOUR TOUCHDOWNS
IN SUCCESSFUL OPENING DAY GAME WITH
BUFFALO ALL-AMERICANS**



Tex Hamer, the Yellow Jacket fullback, began his 1925 campaign in the National League with much gusto, not to say vim, earnestness and success, against Walter Koppisch's Buffalo All-Americans last Saturday.

All Hamer did was to display better football than ever before, and then some. Hamer hit the line, circled the ends and dashed off tackle for substantial gains, and then just to relieve the monotony of his performance, he intercepted a Bison forward pass and dashed seventy-five yards for his fourth and final touchdown of the game.

Last year, his first in the League, the former Penn captain achieved enviable rank among backfield men in pro football. If his first game this season can be taken as a criterion, then Tex, this year, is destined for the top of the heap as the best fullback in the league, and that means the best fullback in the country.

Hamer is six feet, two inches tall and weighs one hundred and ninety-seven pounds in condition, and he is always in condition. Hamer was one of the first players to report for practice. He is one of the first to appear on the field each day for practice and one of the last to leave.

ANKOKAS MILLS

DYEING AND PROCESSING OF
COTTON WARPS, SKEIN AND RAYON

ARTHUR H. LOCKHART, *Sales Manager*

FRANKFORD, PHILA., PA.

"Push It Over"

"Push It Over" is a frequent cry when our team is nearing the goal. The same could be used as a slogan in all worldly affairs—business, athletics, pleasure or when arranging an outing of old friends. It always takes team-work to "Push It Over." We, here in Northeast Philadelphia will use this slogan in supporting our Yellow Jackets. All Philadelphia residents should use it in strong support of the coming Sesqui-Centennial, an affair which will help to boost our city and keep us in the runnings. Are you giving the Sesqui-Centennial your hearty support? If not you should start now, and "Push It Over."



Geo. Royle & Co.

FRANKFORD - - PHILADELPHIA

Makers of DOLLY MADISON BED
SPREADS AND DOLLY MADISON
CRINKLE CLOTH, ROYCO TAPES-
TRIES AND DRAPERY CREATIONS.

RUSH BROTHERS

Contractors and Builders

DARRAH AND MARGARET STREETS

JOBGING Promptly Attended To

Estimates Given

Bell Phone, JEFFerson 5766

FRANKFORD YELLOW JACKET OFFICIAL SCHEDULE 1925

SATURDAY—AT HOME

Oct. 3.....	Providence Steam Rollers
Oct. 10.....	Canton Bulldogs
Oct. 17.....	New York Collegians
Oct. 24.....	Dayton Triangles
Oct. 31.....	Columbus Tigers
Nov. 7.....	Akron
Nov. 14.....	Pottsville Maroons
Nov. 21.....	Cleveland Indians
Nov. 26—Thursday, Thanksgiving Day, Open	
Nov. 28.....	Green Bay, Wis.
Dec. 5.....	Chicago Bears
Dec. 12.....	Play-off

SUNDAY—AWAY

Oct. 4.....	Open
Oct. 11.....	Detroit
Oct. 18.....	New York
Oct. 25.....	Open
Nov. 1.....	Buffalo
Nov. 8.....	Chicago
Nov. 15.....	Cleveland
Nov. 22.....	(Pending) Providence
Nov. 29.....	Pottsville
Dec. 6.....	(Pending) Canton
Dec. 13.....	Open

NATIONAL GRID LEAGUE STAND- INGS AND RESULTS

Clubs	Won	Lost	Tie	P.C.
Frankford	1	0	0	1.000
Greenbay	2	0	0	1.000
Kansas City	1	0	0	1.000
Canton	1	0	0	1.000
Pottsville	1	0	0	1.000
Detroit	1	0	0	1.000
Rock Island	0	0	2	.000
Dayton	0	0	1	1.000
Hammond	1	1	0	.500
Chicago Bears	0	1	1	.000
Chicago Cardinals	0	1	0	.000
Duluth	0	1	0	.000
Rochester	0	1	0	.000
Buffalo	0	2	0	.000
Columbus	0	1	0	.000

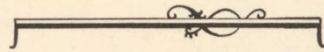
LAST WEEK'S RESULTS

Frankford, 27; Buffalo, 7
 Pottsville, 28; Buffalo, 0
 Greenbay, 14; Bears, 10
 Hammond, 10; Cardinals, 6
 Detroit, 7; Columbus, 0
 Kansas City, 3; Duluth, 0
 Dayton, 0; Rock Island, 0
 Canton, 14; Rochester, 7

GEORGE A. SINN

Coal and Building Materials

WITH BEST WISHES FOR
A SUCCESSFUL SEASON



La France Textile Industries
AND
Velseal Plush Company

WILLYS-KNIGHT AND OVERLAND
Fine Motor Cars

WORLD'S SENSATIONAL SMALL CAR BUY

A WONDER OF BEAUTY

IS THE OVERLAND STANDARD SEDAN

Priced at \$595 00 F. O. B.

BUY WHERE YOU LIVE

FRANKFORD BRANCH

EDWIN B. JACKSON, Inc.

5023 Frankford Avenue

FACTS IN FIGURES - A year's work at THE FRANKFORD HOSPITAL

Patients treated in the Hospital	2,976	
Total visits to the Dispensary	12,418	
Patients treated in the Accident Ward	5,225	
Total patients for the year		20,619
Automobile accident patients	345	
Maximum number of patients per day	122	
Average number of patients per day	94	
DEFICIT for the year		\$17,896,21

YOUR HOSPITAL OUR HOSPITAL MY HOSPITAL
Are YOU interested - DO YOU support it?

Board of Managers Direct Team for Frankford Athletic Association

MATT. BALLENTINE, WALTER GENTRY AND DAVE MELLOW CONSTITUTE
BOARD WHO DIRECT FOOTBALL ACTIVITIES OF ORGAN-
IZATION

A board of managers is directing the affairs of the Yellow Jackets this year. The board of three directors arranges games, cares for players and generally supervises the football situation.

Three men who have been identified with the Frankford Athletic Association since its inception and know football and the football situation in this district inside out, constitute the football committee.

Matt Ballentine, a player on the team when it was scheduling games under the name of Loyola and later as Frankford, heads the committee. Mr. Ballentine is an earnest worker, knows his stuff and always is on the lookout for things by which the association will benefit.

Walter Gentry, another member of the board also has been closely associated with the association since its inception. Mr. Gentry has a keen football mind, is a good judge of a player's ability and, above all, is a real worker.

The third and probably best known member is Dave Mellow, the "war horse" of Frankford football. Dave gained his nickname by his willingness and ability to play any position

on the team. During the eight years Mr. Mellow played with Frankford he played every position on the team. He was the last of the "old guard" to step down from active playing and left an enviable reputation. This is Mr. Mellow's first year as a director and he has jumped into the work of the football committee with all the vim and gusto that characterized his work as a player.

The committee is responsible directly to the board of directors. It began to function early in the year and during the months when the average football fans was vacationing or attending baseball games the members of the football committee met regularly and laid their plans for the season.

Hundreds of football players were considered and when the committee settled in their own minds just what they needed for the current edition of the Yellow Jackets they left no stones unturned in their efforts to get them.

A card index system that took into account virtually all the good college football players who were graduated last June was one of the methods used by the new board to keep track of players.

Yellow Jackets Restaurant

4736 Frankford Avenue

Bell Phone

Sterling and Koch, Props.

Frankford Showed Expected form in Conquering Buffalo, 27 to 7

YELLOW JACKETS DISPLAYED MUCH POWER AGAINST WALTER KOPPISCH'S VAUNTED BISONS, BUT ATTACK WILL BE SMOOTHER
LATER IN SEASON

Walter Koppisch's Buffalo All-Americans came, saw, and were conquered by the Yellow Jackets last Saturday to the tune of 27 to 7.

But Koppisch and his band did not leave Frankford without giving the largest opening day crowd on record one of the greatest scares in history. The Bisons started off the game as if they were going to live up to predictions and give the Yellow Jackets the initial first-game defeat on record.

A forward pass, Foster to Chrisman, netted the visitors a touchdown in the first period, and Foster kicked the goal for a 7-0 lead. All during the first period the invaders outplayed the home talent.

In the second period the Yellow Jacket attack really began to function. Coach Guy Chamberlain's shift plays began to get off with just the proper amount of snap. Line bucks, off-tackle plays, and runs, and an occasional forward pass enabled the Jackets to score twice, Hamer being the final medium each time.

The way for the second touchdown was paved by a thrilling fifty-yard run by Bob Fitzke, the new acquisition from the University of Idaho. Hamer also crossed the goal

line twice in the second half, once in each period. His third touchdown by the result of concerted teamwork, but the final six-pointer was a personally conducted tour by big Tex.

Hamer intercepted a Buffalo pass and gave a spectacular exhibition by racing over the chalk lines seventy-five yards to the goal. Bull Behman showed him excellent interference. Behman, incidentally, kicked each of the goals after touchdowns, but one effort was marred by a Frankford offside.

Although elated by the result of the game, Chamberlain was not made overconfident. The shift system as taught by the former University of Nebraska star can only be mastered after long and arduous hours of practice. Nobody realizes that better than Chamberlain and the Frankford mentor showed no let-up in his driving tactics following the game.

Chamberlain aims for clock-like precision in his shift plays. Without it much of the punch and effectiveness is lost, and the coach will not be satisfied until the Frankford players master the system to the same degree as did his championship teams in Canton and Cleveland. Watch the teamwork improve from week to week.

BECAUSE organizations such as the Frankford Athletic Association tend to develop a closer bond of sympathy between the residents of the community, develop civic pride and advertise Frankford throughout the entire United States, we are pleased to be represented in this program.

Robert Lewis Company

Manufacturers of

Upholstery Fabrics

WHEATSHEAF LANE & CORAL ST.

East of 3900 Frankford Avenue

FRANKFORD, PHILA.

Boosters of the Sesqui-Centennial

BOOST THE
Frankford Yellow Jackets

BRESLIN TEXTILE COMPANY
FRANKFORD, PHILA.

BOOST THE
Sesqui-Centennial - 1926

'TIL MIDNIGHT DAILY

Our Frankford office will welcome the opportunity of serving you. Accounts may be opened here, checks cashed, deposits made and travelers' checks purchased from 8.30 A. M. until midnight daily.

"Look for our advertisement in the Frankford Elevated."

FRANKLIN TRUST COMPANY

SOUTHWEST CORNER FIFTEENTH AND CHESTNUT STREETS

WEST PHILA. OFFICE

52ND AND MARKET STS.

FRONT STREET OFFICE

FRONT AND MARKET STS.

GERMANTOWN OFFICE

5708 GERMANTOWN AVE.

FRANKFORD OFFICE

FRANKFORD AVE. AND PAUL ST.

Both Phones

JOHN A. QUINN

Plumbing and Heating

4324 Paul Street

Frankford, Phila., Pa.

Est. 1882 Phone, Jefferson 8040 Est. 1882

OLDHAM'S

UPHOLSTERING OF THE
BETTER CLASS

SELLERS AND GRISCOM STREETS

Frankford, Phila.

Let us build you a Living
Room Suite that will wear.

Jefferson 0837

Notary Public

Wm. H. Lingo

Real Estate and Insurance

1538 Oxford Avenue

Quick Service for Automobile Licenses

DO YOU HELP SUPPORT

THE

FRANKFORD DAY NURSERY

PRACTICAL CHARITY

—COOPERATE—



Look at Your HAT—

Everyone Else Does!

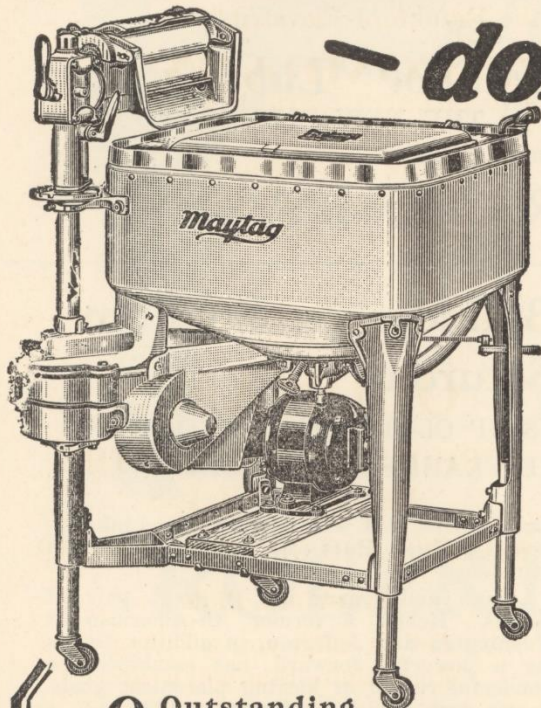
Be sure your next hat is a
Zanzinger hat and be assured
of correct style and quality.

Headquarters for
Stetson Hats — Schoble Hats

ZANZINGER

2929 — Frankford Avenue — 4703

If it doesn't SELL ITSELF — don't keep it!



9 Outstanding Maytag Features

- 1— Washes faster. The Gyrafoam Principle creates a more highly energized, turbulent and continuously effective water action. No idle water.
- 2— Washes cleaner. The Gyrafoam Principle mixes the soap evenly through the water, and forces the super-cleansing, soapier washing solution through the meshes of the clothes. No idle suds.
- 3— Largest hourly capacity in world—50 lbs. ordinary family wash per hour.
- 4— Most compact washer made—takes floor space only 25 inches square.
- 5— Cast aluminum tub—can't warp, rust, rot, swell, split nor corrode.
- 6— Easily adjusted to *your* height, and height of tubs.
- 7— Clothes can be put in or taken out while washer is running.
- 8— Tub cleans itself in 30 seconds.
- 9— Metal swinging wringer. Low. Swings into 7 positions. Adjusts itself automatically for handkerchiefs or blankets. Automatic drainboard. Instant tension-release. All parts enclosed.

9 Reasons for World Leadership

Authorized Maytag Dealer

N. PHILA. MAYTAG CO.
(STARR & MOSS)

3639 Germantown Ave.

Below Broad & Erie

Tioga 41-56

Open Evenings

A PHONE call will bring the Maytag Gyrafoam to your home. There is no cost—no obligation.

WASH WITH IT.

If it doesn't sell itself on its super-speed performance—don't keep it!

If it doesn't sell itself on its highly energized turbulent water action—don't keep it!

If it doesn't sell itself on its unsurpassed nicety in washing chiffons, georgette, and all other dainty things—don't keep it!

If it doesn't sell itself on the way it cleans grimy, greasy overalls—don't keep it!

If it doesn't sell itself on its complete elimination of hand rubbing—even of wristbands, cuffs and collars—don't keep it!

If it doesn't sell itself on its self cleaning, seamless corrodeless, scumless, satin-smooth, cast aluminum tub—don't keep it!

If it doesn't sell itself on its patented, self-adjusting, instantaneous tension-release wringer—don't keep it!

—*but* if it does sell itself, you won't go another day without it!

Don't delay—Call Now





Don't

CLEVELAND SIX

BUY A NEW CAR

UNTIL YOU SEE

The Cars With the "One Shot" Lubrication

THE NEW PIKES PEAK CHANDLER

THE NEW CLEVELAND SIX

Amazing Reduction in Prices

OXFORD MOTORS COMPANY

1528 OXFORD AVENUE

Yellow Jackets Tackle Bulldogs on Stadium Field Next Saturday

VETERANS OF POWERFUL CHAMPIONSHIP CLUBS STILL WITH CANTON AND ARE CERTAIN TO GIVE FRANKFORD TROUBLE

That dark cloud hovering above the championship aspirations of the Frankford Yellow Jackets is the Canton Bulldogs. The Bulldogs, in all their glory, are scheduled to play the Jackets here next Saturday and the Ohio Eleven is bound to be a tough obstacle for the home club to hurdle.

Canton appeared here in 1923 and the only thing the Bulldogs did was to take the measure of the Yellow Jackets by a 3 to 0 count after one of the greatest games of professional football ever staged. That season ended Canton's four-year reign as league champions, because the team was transferred to Cleveland last year, where it again captured the crown.

Seven men constituted the backbone of the Canton and Cleveland teams that monopolized the league honors for five years. Two of them will not be with the Bulldogs next week. One, Guy Chamberlain, who coached the championship elevens, is playing end and coaching Frankford. The other, Larry Conover, center is again with Cleveland.

But the five men who are back with Canton are real stars. And they have an added incentive to play hard this year as they control the club. The veterans of five championship

combinations still with Canton are Link Lyman, Comstock, Harry Robb, Pete Henry and Ben Jones.

Lyman and Henry are a great pair of tackles. Henry, a former All-American at Washington and Jefferson, in addition to being a powerful forward, has established a wonderful record at kicking placement goals. It was such a kick by Henry in 1923 with a wet ball on a muddy field that sent the Yellow Jackets down to defeat. Osborne is one of the best guards playing professional football.

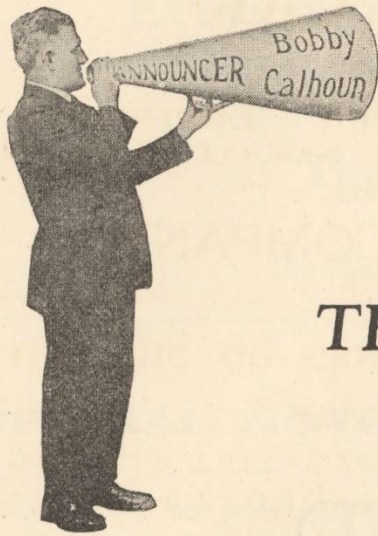
Robb is a Penn State product. He plays quarterback and plays it with his head as well as his feet. Robb shows uncanny ability as a field general and is a fine ground gainer. Jones holds down one of the halfback posts and holds it down in excellent style. He is an interfering back of high order and also is a fine ground gainer.

The five survivors of the erstwhile champions have surrounded themselves with other players of the same calibre and are certain to give the home club the stiffest kind of a battle. So come early and give the Yellow Jackets your support in what appears to be one of the keenest tests of the season.

B. Rowland & Bro., Inc.
Church St. and Pennsylvania R. R.

LEHIGH COAL

Since 1858



*The Official
Announcer Says—*

THE OFFICIAL
OUTFITTER IS

ROBERT LAWSON

Frankford's Leading
MEN'S STORE



CLOTHES

for

Young Men and Men



Frankford Avenue at Margaret Street

RESERVED

Frankford, 27 Buffalo 7
Frankford 7 Providence 0
Frankford 12 Canton 7

FRITZ PFLUG
OF
Evergreen Farm Restaurant
ROOSEVELT BOULEVARD and WELSH ROAD
extends greetings to
The Yellow Jackets
and
the Members of Visiting Teams

SPECIAL NOTICES

The Reserved Seat Section for the Frankford fans for the game at the Polo Grounds, in New York, on Sunday, October 18th, is in the center of the field, and tickets for same may be obtained at the F. A. A. ticket office, 4740 Frankford Avenue. Price, \$2.20 each.

Eep Ipe
Giddy Giddy Ipe
Eep Ipe
Giddy Giddy Ipe
Eep Ipe
Giddy Giddy Ipe
Team! Team!! Team!!

Horse and Wagon,
Horse and Wagon,
TEAM! TEAM! TEAM!!

Yellow Jackets and Frankford

EDGEWATER DYEING AND
FINISHING WORKS

Dyeing, Finishing, Printing, Napping

4080 FRANKFORD AVENUE
FRANKFORD, PHILADELPHIA

Sesqui and Philadelphia

Success to the Yellow Jackets

WHITEHALL TEXTILE COMPANY
WHEATSHEAF LANE AND P. R. R.

Success to the Sesqui-Centennial

Put Your Savings in a Mutual Savings Bank

WESTERN Saving Fund Society OF PHILADELPHIA

Incorporated 1847

Total Assets over.....	\$57,000,000
Surplus Fund over.....	\$ 6,000,000
Deposits over.....	\$51,000,000

4% INTEREST PAID ON DEPOSITS

Main Office
10th & Walnut

Kensington
Front & York Sts.

Frankford
4643 Frankford Ave.

**UNITY BUILDING &
LOAN ASSOCIATION**

**WILL SHOW YOU HOW
TO SAVE AND BUY YOUR HOME**

*Meeting Every Second Friday Evening of the
Month*

Come in and See US

**SECOND NATIONAL BANK
OF PHILADELPHIA AT FRANKFORD**

**LIFE AND FIRE INSURANCE
NOTARY PUBLIC AUTO LICENSES**

EDW. WINTERS

**REAL ESTATE
with Real Service**

1529 FOULKROD STREET

HARRY A. BEDDOW

**THE SPORT SHOP
FRANKFORD**

SPORT GOODS ATHLETIC SUPPLIES

HIGH QUALITY LOW PRICE

**FRANKFORD AND NORTHEAST!
A GOOD PLACE TO LIVE!**

Get the Community Spirit and
Become a Regular Reader
of Your Home Paper

THE FRANKFORD DISPATCH

Issued Every Friday

BY MAIL, \$1.50 PER YEAR

Jeff. 8746

East 7476

Frank J. Bayer
Real Estate

Specializing in Ground

4422 Frankford Avenue

C. L. BARLOW, Manager

F. A. A.

BOOSTER

You Ought to be in Christian's Shoes

**WE SPECIALIZE IN
SELBY ARCH PRESERVER
SHOES
FOR LADIES**

Educators for the Entire Family

CHRISTIAN
4502-04 Frankford Avenue

For a New Frankford and a Greater Northeast

The Frankford Gazette

Oldest Community Newspaper in

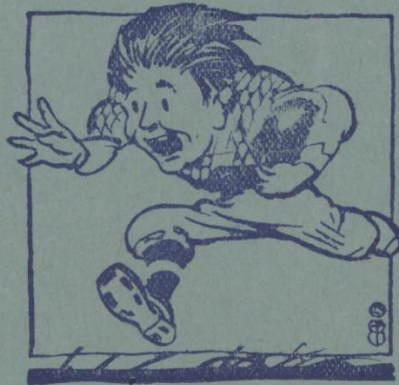
Northeast Philadelphia

57th Year

Every Friday

BY MAIL \$1.00 A YEAR

COMMERCIAL PRINTING



Breaking thru! —for Your Final Goal

The most zealous players in Life's game are they who strive earnestly for the final goal of financial independence.

Break away from the all-too-common tendency of free and careless spending—bank a regular portion of your income each week at a convenient Oxford office. The systematic saver scores a touchdown in the game of life.

Let our strong team of officers and directors work with you—
for your ultimate success.

*4% compound interest on savings.
100% personal interest to you.*

BRANCH OFFICES

Burholme
Bridesburg
Wissinoming
Orthodox Street



Frankford
Avenue and
Overington
Street

MEMBER FEDERAL RESERVE SYSTEM