

PRICE 15 CENTS

N. Y. FOOTBALL GIANTS
vs.
PHILA. YELLOW JACKETS



BENNY FRIEDMAN
Captain, N. Y. Giants

Sunday
October 20, 1929

Polo Grounds
New York



N. Y. FOOTBALL GIANTS SQUAD FOR 1929

Two Giant Backfield Stars

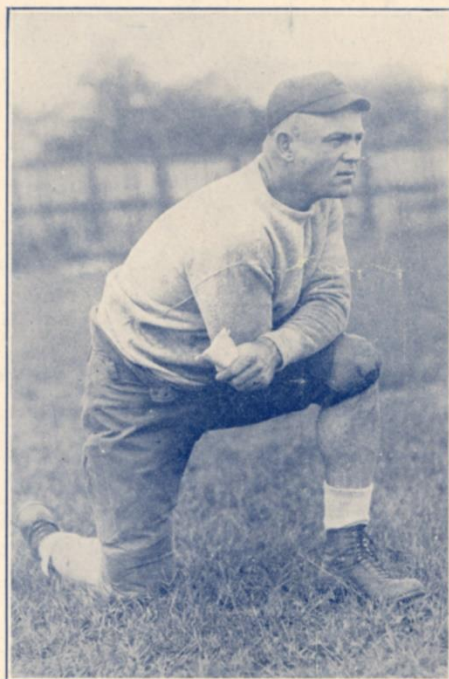


JACK HAGERTY



MULE WILSON

The Giants New Coach



LEROY ANDREWS
(Kansas State College)

Line-Up and Numbers of Both Teams

Referee—THOMAS HEWITT, Buffalo

Umpire—JOHN HENNESSY, St. John's

Field Judge—HARRY CUTHILL, Maryland

NEW YORK GIANTS

No.	Player	Weight	Position	Weight	Player	No.
44	FLAHERTY	190	Left End	189	BARNA	17
55	OWEN (Steve)	230	Left Tackle	216	BEHMAN	19
0	McMULLEN	220	Left Guard	205	COMSTOCK	15
7	WESTOPAL	196	Center	196	MAHONEY	9
29	CAYWOOD	218	Right Guard	195	HANSON	20
36	OWEN (Bill)	215	Right Tackle	202	MALCOLM	21
9	CAMPBELL	180	Right End	190	KOSTOS	10
1	FRIEDMAN	183	Quarterback	182	KELLY	23
4	SEDBROOKE	186	Left Halfback	179	ROGERS	4
6	WILSON	189	Right Halfback	180	WILSON	18
33	FEATHER	192	Fullback	190	DIEHL	2

PHILA. YELLOW JACKETS

NEW YORK GIANTS

No.	Player	Weight	Position	Former College
0	McMULLEN	230	Guard	Nebraska
1	FRIEDMAN	185	Quarterback	Michigan
2	RICE	165	Quarterback	
4	SEDBROOKE	175	Halfback	Phillips
5	HAGERTY	165	Quarterback	Georgetown
6	WILSON	190	Halfback	Texas Aggies
7	WESTOPAL	190	Center	Nebraska
8	PLANSKY	205	Halfback	Georgetown
9	CAMPBELL	185	End	Kansas State
11	HOWARD	215	Guard	Oklahoma
15	MUNN	180	End	Kansas Aggies
17	ASHBURN	190	End	Nebraska
25	SNYDER	190	Fullback	Maryland U.
29	CAYWOOD	230	Guard	St. Johns
30	LYON	235	Tackle	Kansas Aggies
33	FEATHER	190	Fullback	Kansas Aggies
36	OWEN (Bill)	210	Tackle	Phillips
41	MEILZINAR	250		Carnegie Tech.
44	FLAHERTY	195	End	Gonzaga
48	MORAN	190	Halfback	Carnegie Tech.
50	MURTAGH	190	Center	Georgetown
55	OWEN (Steve)	235	Tackle	Phillips

Head Coach—LEROY B. ANDREW, Kansas State.

PHILA. YELLOW JACKETS

No.	Player	Weight	Position	Former College
2	DIEHL	190	Fullback	Bucknell
3	MERCER	182	Halfback	Simpson
4	ROGERS	179	Halfback	Penn
5	FILAK	196	Tackle	Penn State
6	KOSTOS (Martin)	193	End	Schuylkill
7	HALICKI	185	Halfback	Bucknell
8	HOMAN (Two Bits)	165	Quarterback	Lebanon Valley
9	MAHONEY	196	Center	Penn State
10	KOSTOS (Tony)	190	End	Bucknell
11	OEHLRICH	178	Halfback	Nebraska
12	JAMES	192	Guard	Nebraska
14	MAGLISCEAU	195	Tackle	Geneva
15	COMSTOCK	205	Guard	Georgetown
16	MAXWELL	189	End	Notre Dame
17	BARNA	189	End	Hobart
18	WILSON	180	Halfback	Lafayette
19	BEHMAN	216	Tackle	Dickinson
20	HANSON	195	Guard	Minnesota
21	MALCOLM	202	Tackle	W. and J.
23	KELLY	182	Quarterback	Montana

Summary of the More Important Penalties

The Number of the Penalty Will be Posted on the Irwin Scoreboard Whenever Possible

1	Offside, both sides.....	No penalty	21	Substitute communicating before first play.....	15 yards
2	Offside.....	5 yards	22	Unnecessary roughness.....	15 yards
3	Holding, etc., by defensive side.....	5 yards	23	Pushing, pulling, interlocked interference, etc.....	15 yards
4	Second or third incompleting forward pass during same series of downs.....	5 yards	24	Intentional throwing forward pass to ground.....	15 yards
5	Man in motion—no shift.....	5 yards	25	Leaving field during one minute intermission.....	15 yards
6	Crawling.....	5 yards	26	Man going on field without permission.....	15 yards
7	Taking out time more than three times during half.....	5 yards	27	More than one non-playing man going on field.....	15 yards
8	Running into kicker.....	5 yards	28	Coaching from sidelines.....	15 yards
9	Substitute failing to report.....	5 yards	29	Hurdling, tripping, piling up.....	15 yards
10	Unreasonable delay in putting ball in play.....	5 yards	30	Unsportsmanlike conduct.....	15 yards
11	Starting forward before ball.....	5 yards	31	Clipping from behind.....	25 yards
12	Fair catch, taking more than two steps.....	5 yards	32	Man in motion on shift.....	15 yards
13	Attempt to draw opponents offside.....	5 yards	33	Delay in starting game or second half.....	25 yards
14	Interference with opponents before ball in play.....	5 yards	34	Interference on forward by offense..Loss of ball	
15	Illegal tackling.....	5 yards	35	Interference on forward by defense....	
16	Neutral Zone, encroachment on.....	5 yards			1st down at spot of foul
17	Player out of bounds.....	5 yards	36	Slugging.. Half distance to goal and disqualification	
18	Illegal use of hands and arms by offense.....	15 yards	37	Foul by defense on try for point....	Point awarded
19	Interference with fair catch, etc.....	15 yards	38	Penalty declined.....	
20	Roughing kickers.....	15 yards			

New York Giants

	FIRST HALF		SECOND HALF	
	1st Quarter	2nd Quarter	3rd Quarter	4th Quarter
Touchdown				
Goal				
Goal (From Field)				
Safety				
Total				

FINAL SCORE NEW YORK GIANTS.....

Phila. Yellow Jackets

	FIRST HALF		SECOND HALF	
	1st Quarter	2nd Quarter	3rd Quarter	4th Quarter
Touchdown				
Goal				
Goal (From Field)				
Safety				
Total				

FINAL SCORE PHILA. YELLOW JACKETS.....

SCORING

TOUCHDOWN.....	6	GOAL (From Field).....	3
GOAL (After Touchdown).....	1	SAFETY.....	2

Histories, New York Giants, 1929

BENNY FRIEDMAN—183—5.10

Former Michigan captain and All-American quarterback. In college also played baseball and basketball. Passes, kicks and runs with equal brilliancy. Rated as greatest star in or out of college. Third season in professional football.

GERALD SNYDER—188—5.8

1929 All-Southern fullback at University of Maryland. In college played football and lacrosse. Line smasher of unusual ability.

"MULE" WILSON—188—5.11

Formerly Texas A. & M. Three years Southwestern halfback. In college was star in football and track. Third year as member of Giants eleven.

F. D. "HAPP" MORAN—187—6.1

Formerly Carnegie Tech. All-Valley honors for halfback. In college starred at football and basketball. Third year in professional football. Specializes running and kicking. Longest kick 68 yards.

JACK HAGERTY—163—5.10

Formerly Georgetown. Mentioned for All-American quarterback honors. In college played football and baseball. Unusual open field runner and pass catcher. Longest run 98 yards. Third year in professional football as member of N. Y. Giants.

E. E. FEATHER—190—6.1

Formerly Kansas State. All Missouri Valley honors for fullback. In college starred at football and baseball. Third year in professional football as running mate for Benny Friedman.

TONY PLANSKY—205—6.2

Former Georgetown star and weight champion. Starred with weights, and in football and basketball. Second year in professional football as member of New York Giants.

LEONARD SEDBROOK—175—5.10

Formerly of Phillips. Star end and in college also played baseball and basketball. First year in professional football.

RAY FLAHERTY—192—5.10

Gonzaga. All-Western end. In college also played basketball and baseball. Last season played professional football with New York Yankees. Great receiver of passes and kicker.

SAUL MEILZINER—250—6.1

Notable linesman last year with Carnegie Tech. Also starred at baseball and basketball. First year in professional football.

DAN M'MULLIN—225—5.7

Star guard with Nebraska last season. Earned All-Western honors. First year in professional football.

JOE WESTOUPAL—200—6.3

Formerly of Nebraska. Star center with particular skill for playing roving style of game. Third year in professional football, previous teams being Kansas City and Detroit.

GEORGE LYON—230—6.2

Formerly Kansas State. Former captain All-State team. In college starred in football and throwing weights. Best shot record 47 feet 6 inches. First year in professional football.

LESTER GAYWOOD—235—6.1

Formerly St. Johns. Star guard. Fourth season in professional football. Previous teams, Buffalo and Detroit.

BOB HOWARD—200—6.0

Formerly Marietta College. Outstanding guard. Fourth year in professional football. Kansas City, Cleveland, Detroit previous teams.

BILL OWEN—200—6.0

Oklahoma A. & M. All-Western tackle in 1925. Fourth year in professional football. Previous teams: Kansas City, Cleveland and Detroit.

CLIFFORD ASHBURN—190—5.11

Formerly Nebraska. Big Six honorary end. In college also starred on track. First year in professional football.

WILBURN CAPPS—235—6.0

Formerly East Central College. All-State tackle four years. Also starred on track. First year in professional football.

GLENN CAMPBELL—184—5.11

Kansas State. All Conference end in 1925. Played basketball three years. First year in professional football.

L. S. MUNN—175—6.0

Formerly Kansas State. All-Missouri end. Starred in baseball and on track. Youngest member of noted football family. Fourth year in professional football. Previous teams: Kansas City, Cleveland and Detroit.

Here Next Sunday

PROVIDENCE STEAM ROLLERS^c

1928 National League Champions

THE GIANTS HOME GAMES

SUNDAY, OCT. 20—Philadelphia Yellow Jackets with Charley Rodgers

SUNDAY, OCT. 27—Providence Steam Rollers with Gibby Welch

SUNDAY, NOV. 10—Orange A. C. with George Pease

SUNDAY, NOV. 17—Chicago Bears with "Red" Grange

SUNDAY, NOV. 24—Green Bay Packers with Cal Hubbard

SUNDAY, DEC. 1—Chicago Cardinals with Ernie Nevers

SUNDAY, DEC. 8—Yellow Jackets

Choice seats for Giants-Steam Roller Game first on sale tomorrow at office of New York Baseball Club, No. 104 West 42nd Street. Reservations for all Giants games at Polo Grounds also can be made at New York Baseball Club Office.

It will take a blizzard or a tornado to prevent any of the above games, as the Polo Grounds gridiron is protected with an \$8,000 rain-proof blanket and there are 40,000 covered seats for spectators.



Graduate to
Camels
the
better
cigarette

MADE BY R.J. REYNOLDS TOBACCO CO., WINSTON-SALEM, N.C.



M. B. Brown Printing & Binding Co.,
37-41 Chambers St., N. Y.