

PRICE 15 CENTS

N. Y. FOOTBALL GIANTS
vs.
GREEN BAY PACKERS

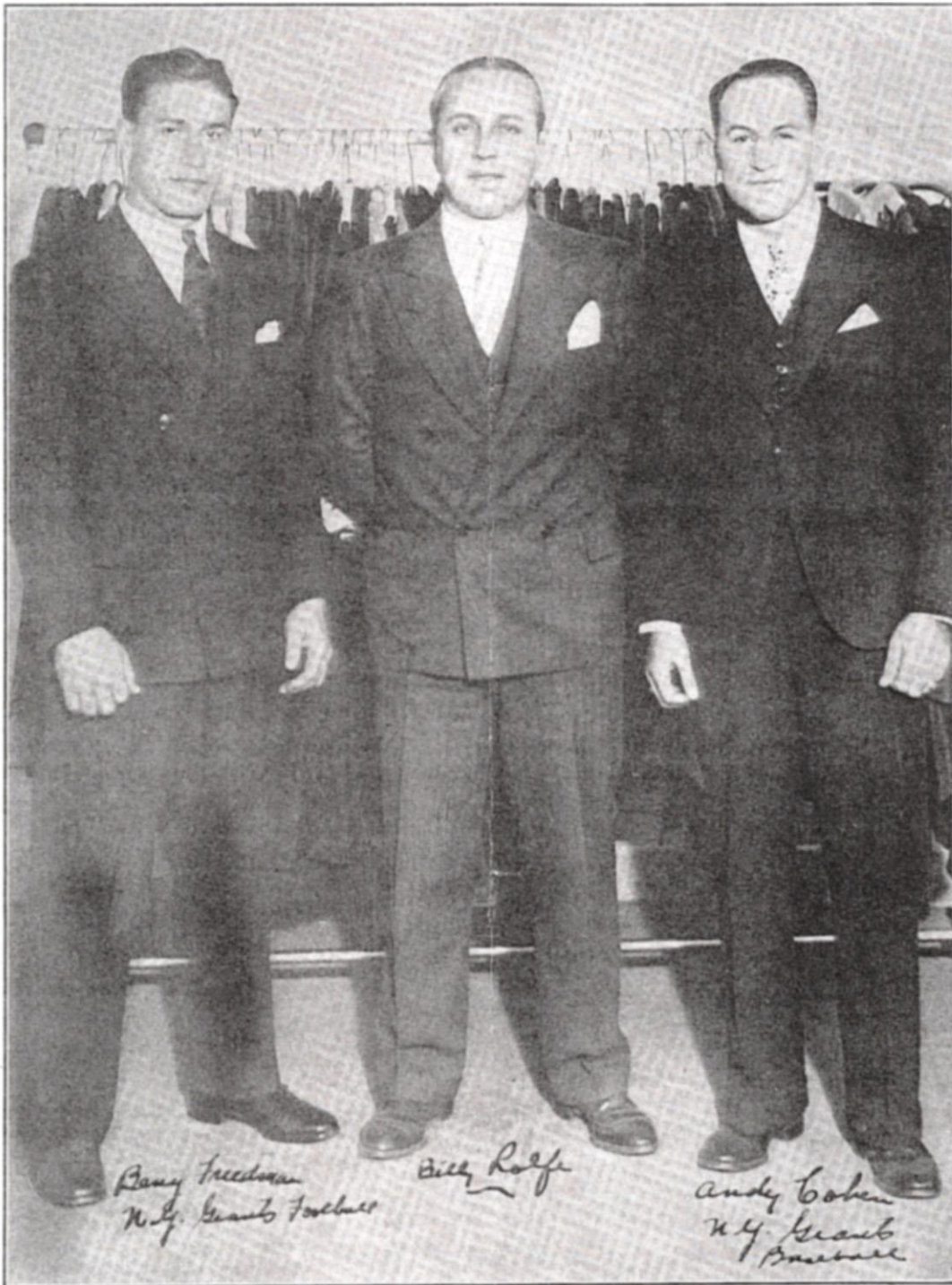


BENNY FRIEDMAN
Captain, N. Y. Giants

Sunday
November 24, 1929

Polo Grounds
New York

THE YOUNG MEN'S LEAGUE



Left to right—Benny Friedman, Billy Rolfe, Chairman, Andy Cohen

THE YOUNG MEN'S PHILANTHROPIC LEAGUE is composed of hundreds of young enterprising business men in this city who each year through their well managed organization conduct various charitable projects which are applied to all, regardless of race, color or creed. Included in the League's membership are well known athletes, notably Andy Cohen, formerly of the Giants, and Benny Friedman, captain of the Football Giants, who was admitted only two weeks ago.

Through the co-operation of the league officials and Mr. Tim Mara, owner of the Football Giants, to-day's game is celebrated as Benny Friedman Day and with proceeds going to the league's charity chest.

Billy Rolfe is chairman of the special committee that so efficiently handled arrangements for the charitable game.

The Giants Big Three



JACK HAGERTY
BENNY FRIEDMAN
COACH LEROY ANDREWS

GIANTS SCORING RECORD

Sharing first place in the National League with the Green Bay Packers from Wisconsin the Giants have established the greatest scoring record ever made in professional football. In their last eight victorious games the red and blue warriors led by Benny Friedman have totaled 204 points to only 29 for their opponents.

Executing their brilliant land and air attack with machine-like precision the Giants have bowled over some of the strongest opponents in the league. After a 0-0 tie with Orange in the opening game the Giants quickly proceeded to get busy and their record is as follows:

Giants.....	7	Steam Rollers.....	0
Giants.....	19	Stapleton.....	9
Giants.....	32	Yellow Jackets.....	0
Giants.....	19	Steam Rollers.....	0
Giants.....	26	Chicago Bears.....	14
Giants.....	45	Buffalo.....	6
Giants.....	22	Orange.....	0
Giants.....	34	Chicago Bears.....	0
	<hr/>		<hr/>
	204		29

THE LEAGUE TEAM STANDING

	W.	L.	T.	P.C.
Green Bay.....	9	0	0	1.000
New York.....	8	0	1	1.000
Frankford.....	8	2	3	.800
Boston.....	4	3	0	.571
Stapleton.....	2	2	3	.500
Chicago Bears.....	4	5	1	.444
Orange.....	2	3	4	.400
Chicago Cardinals.....	3	5	1	.375
Providence.....	3	5	2	.375
Minneapolis.....	1	7	0	.125
Buffalo.....	0	7	1	.000
Dayton.....	0	5	0	.000

Line-Up and Numbers of Both Teams

Referee—TOM HUGHITT, Buffalo
 Umpire—FRANK HOBAN, Baltimore

Linesman—PIERRE MENTON, Lafayette
 Field Judge—JOHN HENNESSY, Brooklyn

NEW YORK GIANTS

No.	Player	Weight	Position	Weight	Player	No.
44	FLAHERTY	190	Left End	202	DILWEG	22
55	OWEN (Steve)	230	Left Tackle	196	PERRY	26
0	McMULLEN	220	Left Guard	209	MICHALESKE	36
7	WESTOPAL	196	Center	245	EARPE	38
29	CAYWOOD	218	Right Guard	190	MINICK	25
36	OWEN (Bill)	215	Right Tackle	250	HUBBARD	39
9	CAMPBELL	180	Right End	196	O'DONNELL	30
1	FRIEDMAN	183	Quarterback	190	SMITH	15
50	PLANSKY	205	Left Halfback	183	BLOOD	24
6	WILSON	189	Right Halfback	181	LEWELLEN	31
33	FEATHER	192	Fullback	207	MOLENDIA	27

GREEN BAY PACKERS

NEW YORK GIANTS

No.	Player	Weight	Position	Former College
0	McMULLEN	230	Guard	Nebraska
1	FRIEDMAN	185	Quarterback	Michigan
4	SEDBROOKE	175	Halfback	Phillips
5	HAGERTY	165	Quarterback	Georgetown
6	WILSON	190	Halfback	Texas Aggies
7	WESTOPAL	190	Center	Nebraska
50	PLANSKY	205	Halfback	Georgetown
9	CAMPBELL	185	End	Kansas State
11	HOWARD	215	Guard	Oklahoma
15	MUNN	180	End	Kansas Aggies
17	ASHBURN	190	End	Nebraska
25	SNYDER	190	Fullback	Maryland U.
29	CAYWOOD	230	Guard	St. Johns
33	FEATHER	190	Fullback	Kansas Aggies
36	OWEN (Bill)	210	Tackle	Phillips
41	MEILZINAR	250		Carnegie Tech.
44	FLAHERTY	195	End	Gonzaga
48	MORAN	190	Halfback	Carnegie Tech.
2	MURTAGH	190	Center	Georgetown
55	OWEN (Steve)	235	Tackle	Phillips

Head Coach—LEROY B. ANDREW, Kansas State.

GREEN BAY PACKERS

No.	Player	Weight	Position	Former College
10	KOTAL	177	Halfback	Lawrence
16	DUNN (Red)	185	Quarterback	Marquette
17	BAKER (Bullet)	175	Halfback	California
19	NASH	210	End	Georgia
22	DILWEG	202	End	Marquette
23	WOODIN	206	Guard	Marquette
24	BLOOD	185	Halfback	Minnesota
26	PERRY	196	Tackle	Alabama
27	MOLENDIA	207	Fullback	Michigan
28	McCRARY	213	Fullback	Georgia
29	DARLING	216	Center	Beloit
30	O'DONNELL	196	End	Minnesota
31	LEWELLEN	181	Halfback	Nebraska
32	BOWDOIN	220	Guard	Alabama
33	KERN	187	Tackle	Pittsburgh
35	ASHMORE	212	Tackle	Gonzaga
36	MICHALESKE	209	Guard	Penn State
38	EARPE	245	Center	Monmouth
39	HUBBARD	250	Tackle	Geneva
25	MINICK	190	Guard	Iowa
20	LAMBEAU (Curley)	195	Coach	Notre Dame
15	SMITH (Red)	190	Quarterback	Notre Dame
34	LIDBERG	188	Fullback	Minnesota
40	CAHOON	238	Tackle	Gonzaga

Summary of the More Important Penalties

The Number of the Penalty Will be Posted on the Irwin Scoreboard Whenever Possible

1	Offside, both sides.....	No penalty	21	Substitute communicating before first play.....	15 yards
2	Offside.....	5 yards	22	Unnecessary roughness.....	15 yards
3	Holding, etc., by defensive side.....	5 yards	23	Pushing, pulling, interlocked interference, etc.....	15 yards
4	Second or third incompleting forward pass during same series of downs.....	5 yards	24	Intentional throwing forward pass to ground.....	15 yards
5	Man in motion—no shift.....	5 yards	25	Leaving field during one minute intermission.....	15 yards
6	Crawling.....	5 yards	26	Man going on field without permission.....	15 yards
7	Taking out time more than three times during half.....	5 yards	27	More than one non-playing man going on field.....	15 yards
8	Running into kicker.....	5 yards	28	Coaching from sidelines.....	15 yards
9	Substitute failing to report.....	5 yards	29	Hurdling, tripping, piling up.....	15 yards
10	Unreasonable delay in putting ball in play.....	5 yards	30	Unsportsmanlike conduct.....	15 yards
11	Starting forward before ball.....	5 yards	31	Clipping from behind.....	25 yards
12	Fair catch, taking more than two steps.....	5 yards	32	Man in motion on shift.....	15 yards
13	Attempt to draw opponents offside.....	5 yards	33	Delay in starting game or second half..	25 yards
14	Interference with opponents before ball in play.....	5 yards	34	Interference on forward by offense..Loss of ball	
15	Illegal tackling.....	5 yards	35	Interference on forward by defense....	1st down at spot of foul
16	Neutral Zone, encroachment on.....	5 yards	36	Slugging.. Half distance to goal and disqualification	
17	Player out of bounds.....	5 yards	37	Foul by defense on try for point....	Point awarded
18	Illegal use of hands and arms by offense	15 yards	38	Penalty declined.....	
19	Interference with fair catch, etc.....	15 yards			
20	Roughing kickers.....	15 yards			

New York Giants

FIRST HALF SECOND HALF
1st Quarter 2nd Quarter 3rd Quarter 4th Quarter

Touchdown				
Goal				
Goal (From Field)				
Safety				
Total				

FINAL SCORE NEW YORK GIANTS.....

Green Bay Packers

FIRST HALF SECOND HALF
1st Quarter 2nd Quarter 3rd Quarter 4th Quarter

Touchdown				
Goal				
Goal (From Field)				
Safety				
Total				

FINAL SCORE GREEN BAY PACKERS.....

SCORING

TOUCHDOWN.....	6	GOAL (From Field).....	3
GOAL (After Touchdown).....	1	SAFETY.....	2

Histories, New York Giants, 1929

- BENNY FRIEDMAN—183—5.10**
Former Michigan captain and All-American quarterback. In college also played baseball and basketball. Passes, kicks and runs with equal brilliancy. Rated as greatest star in or out of college. Third season in professional football.
- GERALD SNYDER—188—5.8**
1929 All-Southern fullback at University of Maryland. In college played football and lacrosse. Line smasher of unusual ability.
- "MULE" WILSON—188—5.11**
Formerly Texas A. & M. Three years Southwestern halfback. In college was star in football and track. Third year as member of Giants eleven.
- F. D. "HAPP" MORAN—187—6.1**
Formerly Carnegie Tech. All-Valley honors for halfback. In college starred at football and basketball. Third year in professional football. Specializes running and kicking. Longest kick 68 yards.
- JACK HAGERTY—163—5.10**
Formerly Georgetown. Mentioned for All-American quarterback honors. In college played football and baseball. Unusual open field runner and pass catcher. Longest run 98 yards. Third year in professional football as member of N. Y. Giants.
- E. E. FEATHER—190—6.1**
Formerly Kansas State. All Missouri Valley honors for fullback. In college starred at football and baseball. Third year in professional football as running mate for Benny Friedman.
- TONY PLANSKY—205—6.2**
Former Georgetown star and weight champion. Starred with weights, and in football and basketball. Second year in professional football as member of New York Giants.
- LEONARD SEDBROOK—175—5.10**
Formerly of Phillips. Star end and in college also played baseball and basketball. First year in professional football.
- RAY FLAHERTY—192—5.10**
Gonzaga. All-Western end. In college also played basketball and baseball. Last season played professional football with New York Yankees. Great receiver of passes and kicker.
- SAUL MEILZINER—250—6.1**
Notable linesman last year with Carnegie Tech. Also starred at baseball and basketball. First year in professional football.
- DAN M'MULLIN—225—5.7**
Star guard with Nebraska last season. Earned All-Western honors. First year in professional football.
- JOE WESTOUPAL—200—6.3**
Formerly of Nebraska. Star center with particular skill for playing roving style of game. Third year in professional football, previous teams being Kansas City and Detroit.
- STEVE OWEN—228—6.2**
Formerly Oklahoma State College. Former All-Western tackle and foremost intercollegiate wrestler. Fourth year with N. Y. Giants. Brother of Bill Owen, the Giants' right tackle.
- LESTER GAYWOOD—235—6.1**
Formerly St. Johns. Star guard. Fourth season in professional football. Previous teams, Buffalo and Detroit.
- BOB HOWARD—200—6.0**
Formerly Marietta College. Outstanding guard. Fourth year in professional football. Kansas City, Cleveland, Detroit previous teams.
- BILL OWEN—200—6.0**
Oklahoma A. & M. All-Western tackle in 1925. Fourth year in professional football. Previous teams: Kansas City, Cleveland and Detroit.
- CLIFFORD ASHBURN—190—5.11**
Formerly Nebraska. Big Six honorary end. In college also starred on track. First year in professional football.
- WILBURN CAPPS—235—6.0**
Formerly East Central College. All-State tackle four years. Also starred on track. First year in professional football.
- GLENN CAMPBELL—184—5.11**
Kansas State. All Conference end in 1925. Played basketball three years. First year in professional football.
- L. S. MUNN—175—6.0**
Formerly Kansas State. All-Missouri end. Starred in baseball and on track. Youngest member of noted football family. Fourth year in professional football. Previous teams: Kansas City, Cleveland and Detroit.

Here Next Sunday

CHICAGO CARDINALS

with

ERNIE NEVERS

One of the greatest stars of all time



Choice seats for Giants-Chicago Cardinals Game on sale at office of New York Baseball Club, No. 104 West 42nd Street. Reservations for all Giants games at Polo Grounds also can be made at New York Baseball Club Office.

Here Sunday December 8th

PHILA. YELLOW JACKETS

80-Piece American League Championship Band



Graduate to
Camels
the
better
cigarette

MADE BY R.J. REYNOLDS TOBACCO CO., WINSTON-SALEM, N.C.



M. B. Brown Printing & Binding Co.,
37-41 Chambers St., N. Y.