

PRICE  
**10c**

# OFFICIAL PROGRAM



Sunday,  
**OCT.**  
**4**

**New York  
Giants**

vs.

**Green Bay  
Packers**

KICK-OFF  
2 P. M.

Get  
Your  
Tickets  
Early!

Come Early

Published by The Green Bay Football Corporation



**FOR COMPLETE  
INTERESTING  
AND ACCURATE**

**FOOTBALL  
NEWS**

**READ**

**THE  
PRESS GAZETTE**



# RED TOP CABS

CLEAN · SAFE · EFFICIENT

PHONE HOWARD 50

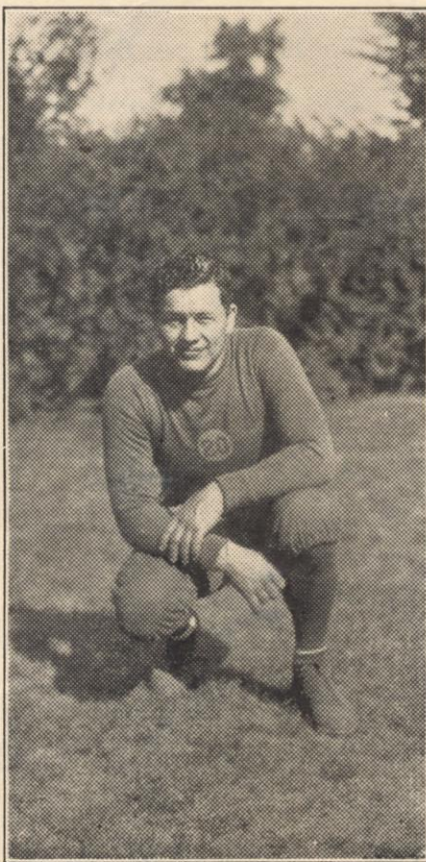
Beaumont  
Coffee  
Shop

—  
Before the  
Game

—  
Football  
Luncheon

—  
QUICK  
SERVICE

—  
Your Selection  
of  
Excellent Food



E. L. LAMBEAU

Coach

Thirteen years ago "Curley" Lambeau started his professional football career here and he has been at it ever since. The Packer leader is a graduate of Green Bay East High and served under the late Knute Rockne at Notre Dame. Lambeau has worked wonders with his Packer teams and his two successive championship elevens stamped him as the most successful coach in postgraduate football. Between seasons, Lambeau specializes in insurance.

Beaumont  
Hotel

—  
After the  
Game

—  
Dinner  
De Luxe

—  
6 to 8 P. M.

—  
One Dollar  
the Plate



# Columbus Community Club Grill

Meals and Luncheons

Fountain Service

Sunday Dinners a Specialty - 75c

Dance in the Auditorium Thurs., Sat. and Sun. Evenings

Bowl for Health and Pleasure

Football Fans desiring Tickets or Information from the Columbus Community Club Office are requested to call  
**Howard 2372**



**LAVIE DILWEG**

**End**

Sports writers have not been timid in saying nice things about Lavvie Dilweg as a football player. Many of them have termed him "the greatest end that the grid game has ever seen." Lavvie has earned rating in the all-professional teams for the last four years. He was an all-American while playing football with Marquette university and was first employed with the Milwaukee Badgers before coming to Green Bay. He is the best pass receiving end in the circuit and a deadly tackler. As the years progress his repertoire of tricks seems to grow.

G. F. Clifford, L. A. Dilweg  
L. Schuette

## Clifford & Dilweg

Attorneys at Law

313 Bellin Building

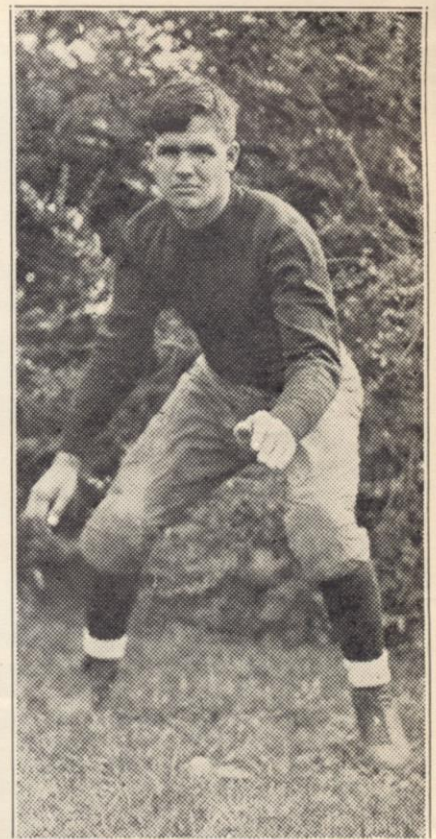
Phone Adams 3690

Green Bay, Wis.

**Hupmobile and  
De Soto  
Del Motor  
Car Company**

419 N. Adams St.

Phone Adams 4553



**W. E. DON CARLOS**

**Center**

Don Carlos formerly played with the Drake football team and while with the Bulldogs for three years he distinguished himself as a great center. At the close of last year when the Notre Dame players held a meeting to pick an all-opponent team, Don Carlos was rated as the best center that faced them during the year. His greatness can easily be measured from this compliment when one considers that the Ramblers played the best teams in the country last year. Don Carlos played against "Red" Bultman, Green Bay boy, three times.

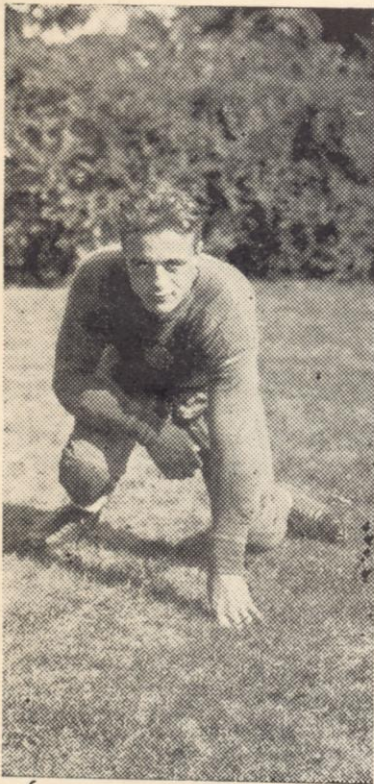


**"Packer" Tickets May Be Obtained At The Following Places In Green Bay:**

Columbus Community Club, Main Ticket Office. Congress Billiards, Bosse's News Depot, Dashnier's Cigar Store, Schweger's Drug Store, Lison's Drug Store, Belleau Drug Store, John Synnes Soft Drink Parlor, Joe Feldhausen's, North Side Community Club, Joe Hyske's.

**Out Of Town Ticket Offices:**

J. J. Stangel Hdw., Manitowoc. Chas. Destache, Sturgeon Bay. Hotel Marinette Drug Store, Marinette. Segers Drug Store, Peshtigo. Paint Sporting Goods, Steven's Point. Phillipp Grosse Hdw. Co., Milwaukee. Jenkin's Cigar Store, Oshkosh. Roach Sport Goods, Appleton. "Mulligan Seroogy - Postal Telegraph, Neenah. R. B. Vickery, Suamico.



**KEN RADICK**

**Guard**

Ken Radick is a home-town boy who started his grid career with the West high eleven. After being graduated from West, Radick enrolled at Indiana. He tired of this before two weeks' time and then went to Marquette university where he made a name for himself. In his senior year Radick was captain of the Golden Avalanche and was known up and down the grid circuit for his wit and pep. Radick played tackle for a time last year but when the emergency presented itself he also was shifted to an end post. During the off season, Radick goes to school.

**The Great American Value**



**There Is No Substitute For  
6 Cylinder Smoothness**

**Bogda  
Motor Co.**

**415-417 Main St.**

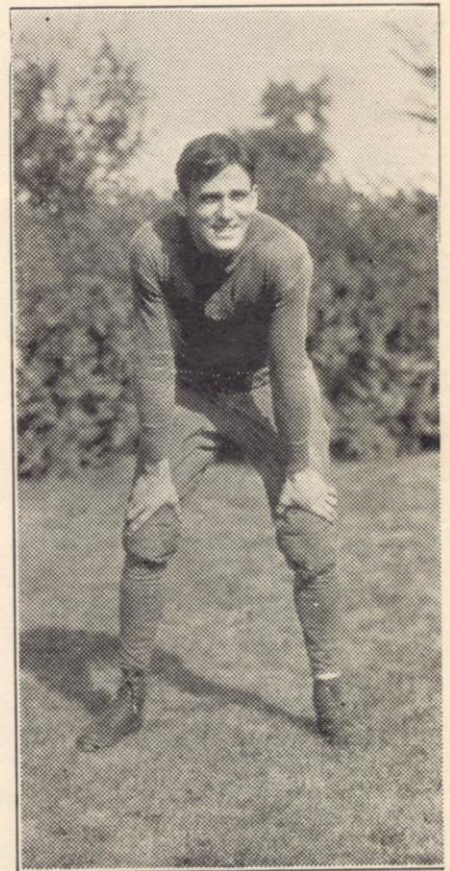
**Howard 32**

**E. P. MURPHY  
GRANITE CO.  
MONUMENTS**

**730 Lincoln St.**

**Phone Howard 8-W**

**Green Bay, Wis.**



**JOHNNY BLOOD**

**Halfback**

Johnny Blood is one of the fastest men on the team and is a dangerous threat on end run plays. He started his professional football with the Duluth Eskimos and acquired his training at St. Mary's. While at St. Mary's he was a great basketball star and a football player par excellence. Last season he was hampered by injuries but many expect that he will make a comeback and give Green Bay fans the great football that is in him. Johnny has often been called upon to play many backfield positions and he is equally as good at one as at the other.

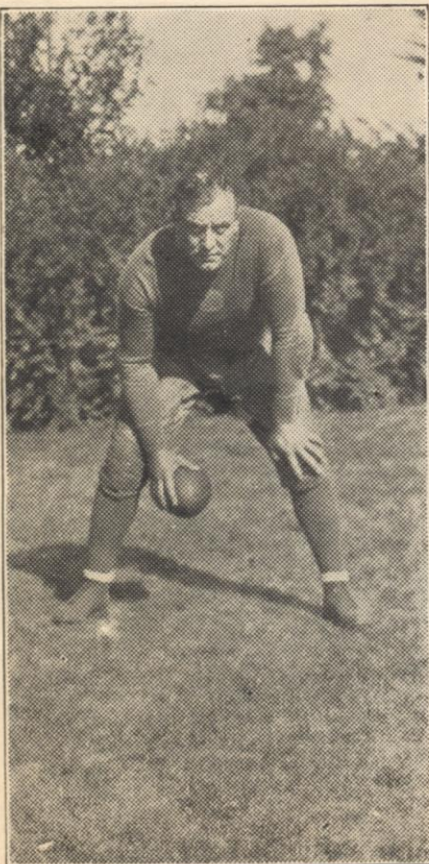


COMPLIMENTS OF  
**DIANA MANUFACTURING CO.**  
**DOWNIES SANITARY NAPKINS**

**KODAKS**  
**EDISON — HOWARD RADIOS**  
**THE STILLER CO.**  
 210-212 CHERRY STREET

**VAN'S HARDWARE**  
 EXCLUSIVE AGENCY ESTATE HEATROLAS  
 SERVES — SAVES — SATISFIES  
 408 DOUSMAN ST.                      PHONE ADAMS 848-W

**DASHNIER'S CIGAR STORE**  
 Soda Fountain      Cigars      Candies  
 Newspapers              "Billiards"              Magazines  
 226 EAST WALNUT                      PHONE ADAMS 1905



**JUG EARPE**

**Center**

"Jug" Earpe is the oldest man in point of service playing on the Packer football team. Earpe started his professional career with the Rock Island Independents when that city boasted of great elevens coached by Jimmy Conzelman. He played with the Independents for a short time and then acquired his release, immediately joining the Packers. "Jug" was graduated from Monmouth college and during his collegiate days distinguished himself on the football field. Chicago sports writers have called Earpe "the man-mountain of professional ball."

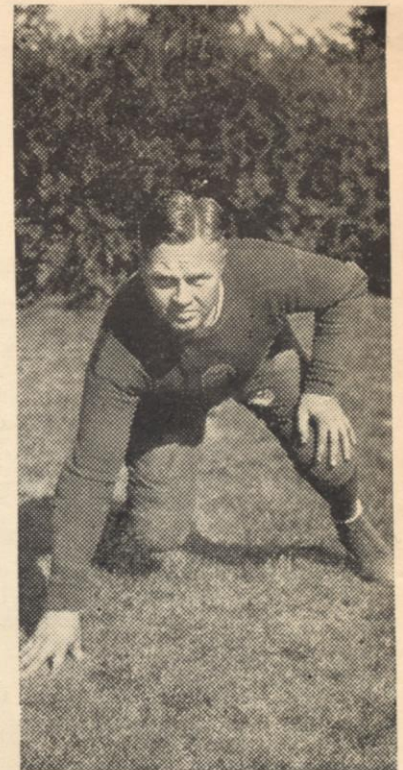
Compliments of

**Green Bay  
 Auto Parts  
 Company**

**Automotive Parts  
 Jobbers**

**508 N. Monroe Ave.  
 Green Bay, Wis.**

**Branch Office:**  
 327 West College Avenue  
 Appleton, Wis.



**WHITEY WOODIN**

**Guard**

"Whitey" Woodin is another veteran in the Packer line-up, starting his professional football career shortly after Earpe joined the team. He was graduated from Marquette university and since that time has been playing with the cash-and-carry teams. Woodin has served as utility guard for the past four seasons and when called upon always responds with a consistent brand of gridiron work. He is at home playing guard and is a dependable man on the offense. Whitey is one of the hardest workers on the squad and is always fighting to win.

**EAT AT  
 KNOWLAN'S**

**And Take Home A Box of  
 Our Home Made Candies  
 Green Bay                      Kaukauna**



SAVE AND BE SAFE

Heat With  
Reiss DOCK Coal

**THE C. REISS COAL CO.**

"Fifty Years of Coal Satisfaction"

Offices 303 E. Walnut St.—West Mason St. Bridge

Phone Adams 915

**Schauer & Schumacher**

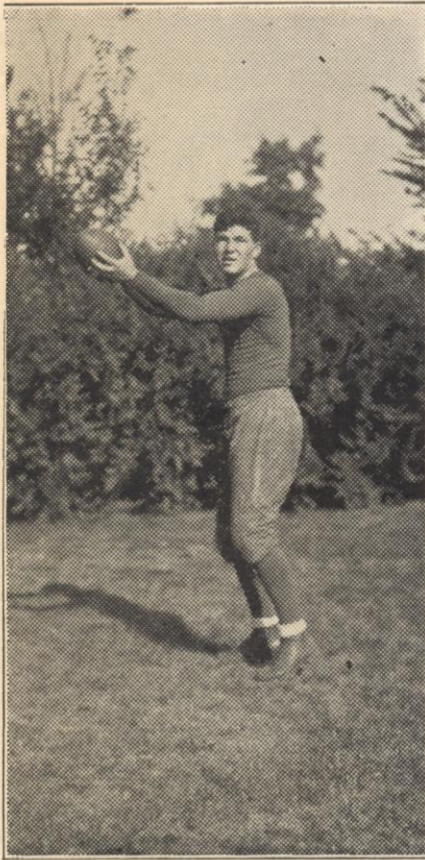
**Furniture and Funeral Directors**

Corner Adams and Walnut

**Funeral Home 109 N. Adams**

Phone Adams 567-W

Green Bay, Wis.



**ARNOLD HERBER**

**Halfback**

Arnold Herber started his football career with the West Green Bay eleven, playing three years of prep football. He enrolled at the University of Wisconsin and during his frosh year was elected captain. Later he attended Regis college and won distinction on several of the Rocky Mountain honor teams. He played his first season of pro ball last year and on the eastern trip proved that he was as good a quarterback as could be found around the pro loop. Herber is a great ball handler, and can toss passes with the best of 'em. He is a brilliant punter.



**MOSINEE  
DUBLTOWLS**

America's Finest Fibre  
Towels

Used in Every State

Manufactured in Green Bay

BY THE

**BAY WEST  
PAPER CO.**

a Division of the  
Mosinee Paper Mills Co.

Compliments of

**Green Bay Drop  
Forge Co.**

Phone Adams 1142

1341 South State Street

Green Bay



**HURDIS MCCRARY**

**Fullback**

McCrary is known around the professional league for his speed. He came to the Packers from the University of Georgia and was highly recommended by Jimmy "Sleepy" Crowley, Green Bay man, who was a part of the famous Notre Dame Four Horsemen. During the seasons of 1927-28 McCrary earned all-American distinction. His speed is of greater importance as he is blessed with sufficient weight to make him a hard man to stop. McCrary is a great pass receiver, and once he tucks the ball under one arm he is off on a long jaunt.



No Trouble! No Fuss!  
to prepare!

*Valley Farm*  
REIMER'S MEAT PRODUCTS

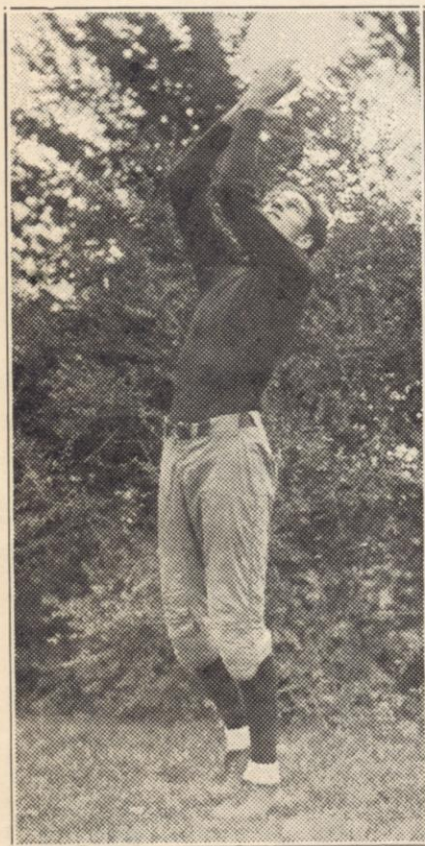
100% Pure Pork Sausage  
or Sliced Canadian Bacon

They are good any way or time  
you serve them.

Made fresh daily—

Reimer's Meat Products

Green Bay



**FRANK BAKER**  
End

Frank Baker has been a valuable addition to the platoon of ends hired by the Packers. He attended Northwestern university last year and won distinction as an all-American. Baker is a rangy fellow and is built along the same lines as Dilweg and Nash. He left school before receiving his diploma to make moving pictures. Since then he has been dabbling in baseball and is said to be a star at the game. Baker is an excellent pass receiver and was one of the leading point scorers in the Big Ten. His home is at Madison.

USE THE

**NEW  
ISO-VIS  
RED CROWN  
ETHYL**

**AN IDEAL  
COMBINATION**

**Standard Oil Co.**  
(Indiana)



**RAY JANNISEN**  
Tackle

Ray Jannisen is joining the Green Bay Packers this year as a tackle. He comes to this city with the recommendation of Wuert Engleman. Jannisen attended the University of South Dakota and made a name for himself in the frontwall with that school. Last year South Dakota had a successful season and in the final resume of the year the sports writers brought Jannisen in for a favorable part of the praise. Jannisen is a husky chap and if he lives up to advanced notices should make the grade with the Packers. He can play either of the tackle positions.

**Pankratz Motors**

**Expert Auto Repairing**

**CARS RECONDITIONED  
and TIRE'D on U. S. P. A**

**6 Mo. Payment Plan**

**719 S. Broadway**

**Phone Adams 5611**



GOOD MEALS AT THE  
**TOASTED SANDWICH SHOP**  
RESTAURANT

FOUNTAIN SERVICE  
122 N. Washington St. Green Bay, Wis.

MEET THE FOOTBALL PLAYERS AT THE

**C O N G R E S S**

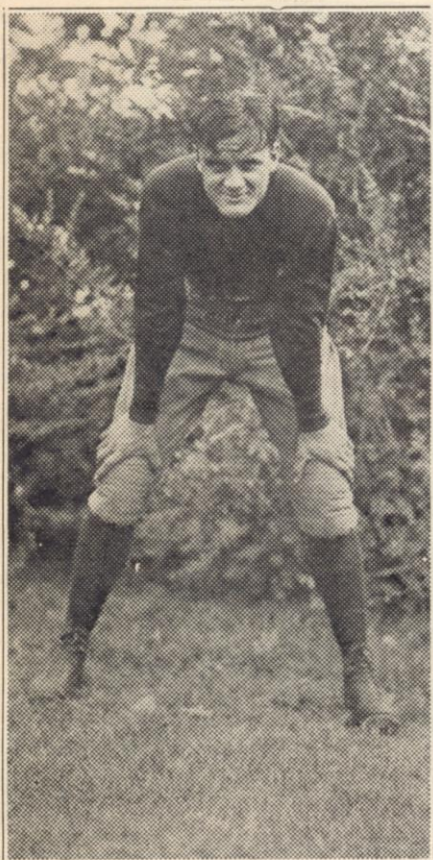
GREEN BAY'S FOOTBALL HEADQUARTERS  
FOOTBALL SCORES RECEIVED HERE

**HARRISON HANNON**  
DRUGGIST

MAIN AT WEBSTER GREEN BAY

**LAWRENCE BASTEN & SON**  
FURNITURE — UNDERTAKING

924 Main St. Phone Adams 2274-W



**WAYNE DAVENPORT**  
Halfback

Wayne Davenport was rated as one of the outstanding backs in Texas last year. He attended Simmons college at Abilene, where he played three seasons of varsity football. Davenport received the recommendations of several football coaches in Texas when Coach Curly Lambeau made inquiries about him. All of these reports state that Davenport is one of the fastest backs ever turned out at Simmons college and he combines his physical power with his mental capabilities. He is also a punter and passer of great ability and should shine in the Bay backfield.

**Popular Choice!**



to  
**MILWAUKEE**  
**CHICAGO**

No. 10

Lv. Green Bay . . . . . 7:00 a. m.  
Ar. Milwaukee . . . . . 9:55 a. m.  
Ar. Chicago . . . . . 11:45 a. m.

Parlor car, coaches

**The Copper Country Limited**

Lv. Green Bay . . . . . 1:35 a. m.  
Ar. Milwaukee . . . . . 5:25 a. m.  
Ar. Chicago . . . . . 7:40 a. m.

Dining car serving breakfast; coaches.  
Sleeping car (open for occupancy at 9:30 p. m.)

**To Northern Michigan**

The Copper Country Limited leaves Green Bay 10:30 p. m. The Iron Country Limited leaves Green Bay 2:55 a. m.

Green Bay Ticket Office  
Phone Adams 866  
G. C. Hittel, Div. Pass. Agent  
Phone Adams 6170

1005

*The* **MILWAUKEE ROAD**



**PAUL FITZGIBBON**  
Halfback

Paul Fitzgibbon, a veteran of the professional league and was signed up last season because of his experience. Fitzgibbon played football with the Duluth Eskimos several years ago and was also employed for a time with the Chicago Cardinals. He is a typical Irishman, which means that he is a fighter from way back. Fitz is especially valuable to the Packers when used to halt a passing attack. He is also a nice ball handler and a forward passer of great ability. Fitz formerly attended Creighton university and was rated highly.

**Painless Extraction**

**Gas - Nerve Block and X Ray**

Have your Dental Work done evenings. - Open until 8:30

Our Prices are Moderate But not to low for the best Dentistry

OVER 10 YEARS IN GREEN BAY

**UNION DENTIST**

DR. B. D. HOULIHAN, Mgr.

203 N. Washington St.  
PHONE ADAMS 1237



TELEPHONE ADAMS 285

1836 S. BROADWAY

THE DAY THROUGH  
THE YEAR 'ROUND  
THE WORLD OVER

**Bretting Tractor & Equipment Co.**

**CATERPILLAR**

REG. U. S. PAT. OFF.

GREEN BAY -- WISCONSIN

## WARREN INSURANCE AGENCY

Established 1874

PROVEN SUPERIOR SERVICE

611 Bellin Building

Phone Adams 786

All Forms of Insurance



**RED DUNN**  
Quarterback

"Red" Dunn had his best year with the Packers last season. He could not withstand the urge to get back in football togery this year and again handed in a signed contract. While at Marquette university Dunn was captain of the Hilltoppers in 1922 and in this year gained all-American rating from Walter Eckersall. He played for a time with the Milwaukee Badgers and then for two seasons with the Chicago Cardinals. "Red" was later purchased by Green Bay and has been here since. He is a dependable passer and also gifted with the proverbial educated toe.

RUGS

STOVES

## Lambeau Furniture Co.

Retailers of

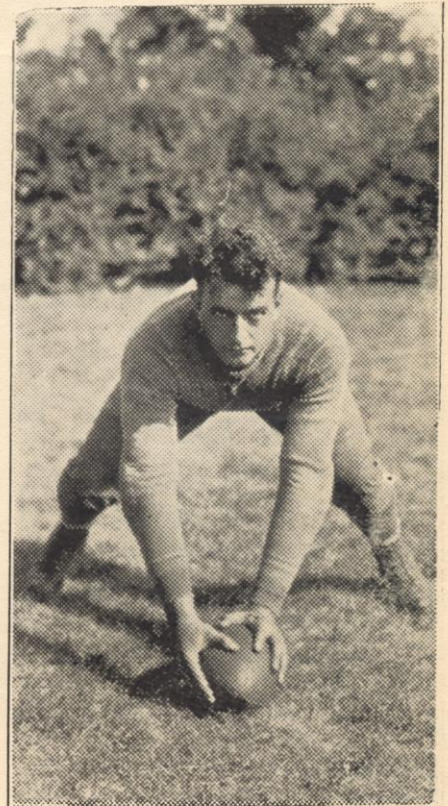
Complete Household  
FURNITURE

Labor Temple Bldg.

Howard 848

Green Bay, Wis.

FURNITURE    BEDDING



**BERNARD DARLING**  
Center

Bernard Darling is a graduate of Beloit college and won distinction as a center while playing with the Little Four conference eleven. That is the reason why the Packers grabbed him off to play the pivot position. Darling is no longer an understudy in the line and has been sharing these labors with the veteran "Jug" Earpe. He has gained a wealth of experience in the past three years and is a dependable worker. Last year he uncovered enough brilliant football on the eastern trip of the Packers to convince everyone that he aided in the pennant race.



# PRO GRID NOTES

## NATIONAL LEAGUE

	W.	L.	Pct.
Green Bay .....	3	0	1000
Portsmouth .....	2	0	1000
New York .....	1	0	1000
Chicago Bears .....	1	1	.500
Cleveland .....	1	2	.333
Philadelphia .....	0	0	.000
Stapleton .....	0	0	.000
Chicago Cards .....	0	1	.000
Providence .....	0	1	.000
Brooklyn .....	0	3	.000

### Sunday's Games

New York at Green Bay.  
Philadelphia at Providence.  
Brooklyn at Stapleton.

Jerry Corcoran's Cleveland club upset the pro football dope bucket by taking Brooklyn into camp by a 6-0 score. The Indians, after dropping a pair of combats, have started clicking like a well oiled machine.

Experts around the circuit can't explain what is wrong with Brooklyn. On paper the Dodgers look as good as any spoke in the National wheel yet they have taken it on the chin in their first three starts this season.

The revamped Philadelphia eleven will make its opening start in the pennant chase on Sunday against Providence. The Jackets have got in several practice tilts and appear to have material for a first class squad.

Stapleton plans to launch its chase for the gridiron pennant this weekend with a fitting ceremony. Dan Blaine's hirelings will be at home to Brooklyn and it should be a great game as the teams are bitter rivals.

Both the Chicago clubs are without league engagements this Sunday and it is likely that the executives of both the Cardinals and Bears will make the trip to Green Bay and participate in the flag raising program.

"Bunk" Harris, who did a lot of pro-footballing a few years back with the Duluth club, is working regularly as a member of President Carr's officiating staff. He is getting some of the important games in the west.

Starting with the Oct. 1 game with the New York Giants, George Halas and his Chicago Bears will have quite a stay at Wrigley field and, on the few dates the Bruins are away, the Chicago Cardinals will play at Cubs park.

Harold Hanson, Minnesota, who played stellar ball for Philadelphia at guard for a number of seasons, has burned up his uniform. Hanson is interested in a drug store chain in the Gopher state and is doing nicely.

"Heavy" Feather is doing his gridiron stuff this year with Stapleton. He was one of the mainstays of the N. Y. Giants' back line for several seasons and Coach Haines expects him to continue to star as an "Islander."

Lou Gordon has been released by the Chicago Cardinals to Brooklyn. Gordon was one of the best line men developed by Alonzo Stagg in a long time. Gordon is an aggressive forward. He should fit in well with the Dodger team.

Verne Lewellen, district attorney at Green Bay who doubles as a Packer halfback, made the only touchdown of the game with the Chicago Bears last Sunday. He also got off several of his copyrighted brand of punts.

Ernie Nevers is doing his stuff via the field goal route. In the contest with Portsmouth, which his Cardinal team lost by a 13-3 count, the big blonde from Stanford booted one through the uprights, some 30 yards out.

Flenniken, former Geneva college star, won himself a berth in the Giants' backfield by his brilliant exhibition against Providence. He made one pass to Campbell for a touchdown and then plunged over for another.

Molesworth is making a determined bid for a place with the Chicago Bears. He was a member of the Portsmouth squad for three seasons. The ex-Monmouth griddier is a slippery back and he prances well in the open field.

Myles McLain was given his release by Portsmouth. The big fullback who burned up the Big Ten the one year he played with Iowa was thought to be a fixture with the Spantans but evidently Coach Clark figured otherwise.

Red Flaherty, one of the greatest professional ends in the country, is back again with the N. Y. Giants. In 1929, Flaherty was picked on the all American postgraduate team. Last season he coached at Gonzaga college.

Green Bay will raise the 1930 pennant this Sunday before the game with New York. Joe F. Carr, president of the National league will be among those present and an invitation has been extended to Gov. Philip LaFollette.

Fitzgerald, the veteran Stapleton center, is again performing at the snapper-back's post. "Fitz" isn't quite as big as some of the middle men in the pro league but he always gives his opponents a tough argument.

Quite a number of the postgraduate gridriers do their stuff on the wrestling mat between seasons. Stein, New York, is ranked well as a "rassler" in the Gotham area while Bruder, Green Bay, grapples in the midwest.

## TICKETS!

In addition to places mentioned in another part of this program "Packer" Tickets may be obtained from Elmer Marchant, Green Bay; Pettibones Appleton and Ullsperger's Drug Store Oconto.

Guy Fresnell, who was a gridiron hero at Nebraska a few years back, is displaying gobs of class with Portsmouth at quarterback. The ex-Cornhusker is a triple threat artist. He was with Ironton during 1929-1930.





The Fox Theatre Plays The Big Pictures  
Of The Greater Show Season

Starts **TODAY**  
On Stage for One Week

## SWAMI - B

IN PERSON

Greatest of Hindu Mystics  
Hypnotist Magician  
Mind Reader

TODAY'S FEATURE

**Richard Barthelmess**  
in "The Last Flight"

SUNDAY  
BARGAIN

35c

12:30 to 6 P. M.

# KIHLBERG AUTO REBUILDERS

WE SPECIALIZE IN THE REBUILDING OF  
WRECKED CARS

DISTRIBUTORS FOR MAREMONT SPRINGS

726 Cedar Street

Phone Adams 367

## PACKERS

11 Grove	Mich. State	175	Quarterback
12 Baker	Northwestern	182	End
13 Bruder	Northwestern	190	Halfback
14 Fitzgibbon	Creighton	171	Quarterback
15 Dunn	Marquette	175	Quarterback
17 Wilson	Texas	190	Halfback
18 Saunders	Southern Cal.	175	Halfback
19 McCrary	Georgia	205	Fullback
20 Blood	Minnesota	187	Halfback
21 Gantenbein	Wisconsin	199	End
22 Dilweg	Marquette	190	End
23 Woodin	Marquette	194	Guard
24 Carlos	Drake	190	Center
25 Englemann	South Dakota	185	Halfback
26 Herber	St. Regis	185	Halfback
27 Perry	Alabama	210	Tackle
28 Michaleske	Penn State	194	Guard
29 Darling	Beloit	206	Center
30 Molenda	Michigan	208	Fullback
32 Comstock	Georgetown	198	Guard
33 Radick	Marquette	210	Guard
34 Bowdoin	Alabama	230	Guard
35 Nash	Georgia	210	End
36 Stahlman	Chicago	221	Tackle
37 Sleight	Purdue	215	Tackle
38 Hubbard	Geneva	250	Tackle
39 Earpe	Monmouth	238	Center
46 Lewellen	Nebraska	185	Halfback
Lambeau	Notre Dame	189	Coach

Dine

## HOTEL NORTHLAND

SPECIAL  
TABLE DE HOTE  
DINNERS \$1.00

A BEAUTIFUL PLACE  
HOMELIKE

COMFORTABLE

FIREPROOF

SLEEP IN SAFETY  
A SCHROEDER HOTEL

## Green Bay Glass Co.

Chas Mathys

Louis Mathys

"Glass of All Kinds"

Furniture Tops

Auto Glass Installed

113 S. Broadway

Green Bay, Wis.

AFTER THE GAME LET'S GO TO THE

# Orpheum

THEATRE

VAUDEVILLE

AND SCREEN FEATURE

TOMMY COMSTOCK at the ORGAN



# Barkhausen Oil Corp.

WADHAMS GASOLINES

MOBIL OIL

FIRESTONE TIRES

BARKHAUSEN-WADHAMS, Stations and Dealers invite you to be their guest at all the PACKER travel games, through Russ Winney and The Milwaukee Journal Station W T M J.

## New York Giants



Ice Cream

and

Chocolate Milk

Before - During

and After

Packer Football Games



2 Murtaugh	Georgetown . . . . .	190	Cen. & Guard
3 Grant	N. Y. U. . . . .	235	Tackle
4 Broadstone	Nebraska . . . . .	210	Tackle & Guard
5 Schwab	Okla. City U. . . . .	210	Back
6 Powell	Davis and Elkins . . . .	210	End & Tackle
7 Hein	Washington State . . . .	205	Center
8 Wyckoff	Georgia Tech . . . . .	205	Back
9 Sark	Phillips U. . . . .	210	Guard & Tackle
10 Artman	Leland Stanford . . . . .	230	Guard
11 Gibson	Grove City . . . . .	200	Guard
12 Cagle	West Point . . . . .	170	Back
13 Kitzmiller	Oregon U. . . . .	170	Back
14 Sedbrooke	Phillips U. . . . .	170	Back
15 Campbell	Emporia Teachers . . . .	205	End
17 Badgro	U. of S. Calif. . . . .	190	End
18 Burnett	Emporia Teachers . . . .	190	Back
20 Gutousky	Okla. City U. . . . .	190	Back
22 Moran	Carnegie Tech . . . . .	190	Back
23 Stein	Hard Knocks . . . . .	205	End & Tackle
29 Flenniken	Geneva . . . . .	200	Back
36 Owen, W.	Phillips U. . . . .	205	Tackle
41 Flaherty	Gonzaga . . . . .	198	End
55 Owen, Steve	Phillips U. . . . .	245	Ch., Gd., T.

Referee: Meyer Morris, Rock Island

Umpire: George Lawrie, Chicago

Head Linesman: W. R. Smith, Chicago

# FORD COKE

THE BEST — THE CLEANEST

THE EASIEST FIRED AND THE MOST  
ECONOMICAL FUEL FOR HOME HEATING

NO SMOKE

NO SOOT

NO DUST

## F. HURLBUT COMPANY

WISCONSIN DISTRIBUTORS



## CHICKEN DINNERS

AFTER THE FOOTBALL GAME

# C. J. HESSELL

FRANCIS CREEK, WIS.

PHONE RESERVATIONS MANITOWOC 38-F-3

Two Blocks East of Highway 141

## NORTHERN METAL & ROOFING CO.

PHONE ADAMS 1140

422-424 S. Pearl St.

Green Bay, Wis.

Specializing in Built-up Roofing and All Types of Sheet Metal Work Including Heating and Ventilating Systems

BUILDERS' SPECIALTIES

MONCRIEF FURNACES



### ROGER GROVE

#### Quarterback

Around the portals of Michigan State, Ray Grove was to the Spartans as Bob Grove is to the Athletics today. He was a colorful player while in school, mastering many of the finer points of the game from his famous grid teacher, Jimmy Crowley. Crowley highly recommends Grove and with his official visa attached, Green Bay fans can expect expert grid work. Grove is a quarterback by trade but because of his speed is equally as effective at either of the halfback positions. While with the Spartans he also played basketball and was a star of the first dimension.

## Evergreen SUMMIT TISSUE



Evergreen Summit Tissue gives you the utmost in personal health protection. Its high degree of purity, snowy whiteness, amazing absorbency and soft, gentle texture makes it vitally important that you ask for this new and improved bathroom paper by name the next time you buy. Choice of sanitary protected single rolls or new, smart carton containing three 650 sheet rolls.



At All Good Stores

MADE IN  
GREEN BAY, WIS.

HOBERG  
PAPER & FIBRE CO.



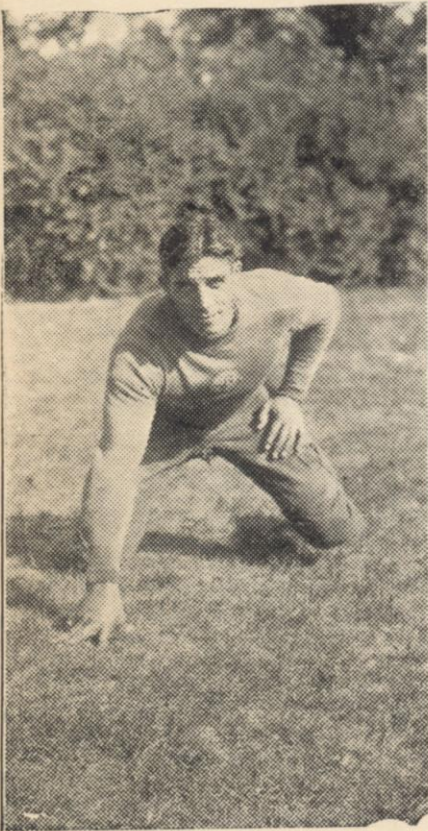
### HANK BRUDER

#### Fullback

Hank Bruder is another of the newcomers to the Packer fold who should have little trouble breaking into the pro game in his first year. Bruder attended Northwestern university and while playing with the Wildcats was known as "Hard Luck Hank". In his junior year in school he suffered a broken leg but came back and closed his college career in brilliant style. Bruder comes well equipped with football fundamentals and has a good build for the fullback position. He has attained a name for himself as professional wrestler around Chicago and Milwaukee.



# KRIPPNER'S OK FURNITURE



**AUGUST MICHALSKE**

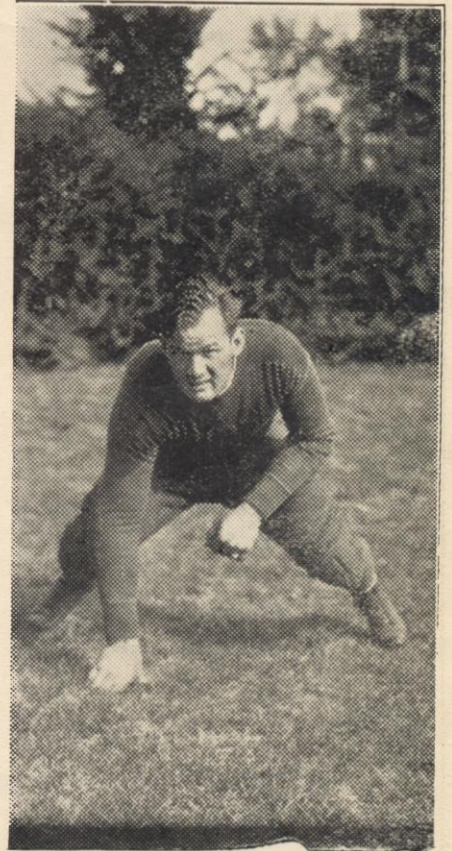
**Guard**

August Michalske, better known to Green Bay fans as "Mike", is probably the most colorful player in professional football today. Michalske was formerly a luminary at Penn State, later playing with the New York Yankees before joining the Packer squad. He has been named on several all-professional teams and has a number of brilliant plays to his credit to convince everyone that the honor was not misplaced. Michalske moves around quickly in the Packer frontwall and is usually on top of the ball carrier before he can break away to a sizeable gain.



THE SIGN OF  
QUALITY MILK  
THE FAIRMONT  
CREAMERY CO.

PHONE ADAMS 6000



**ELMER (Red) SLEIGHT**

**Tackle**

Elmer "Red" Sleight joined the Packer football team after playing great ball with Purdue. While a member of this Big Ten school he helped the Boilermakers to win a Western conference title and, incidentally, gained for himself all-American rating. "Red" was a success in his first year in the professional league and his stellar line play aided the Packers greatly in winning the title last season. He is an excellent team player and has an uncanny knack of calling his opponents' plays before they materialize. He is one of the largest men on the squad.

## Green Bay Shoe Repairing Co.

Shoes Repaired While You Wait  
or Called For and Delivered

PHONE ADAMS 534  
214 Cherry St. Green Bay



# Follow the Packers' Battles With— OLIVER KUECHLE

Kuechle knows the Packers! He's followed them for years, written about their triumphs and defeats, and knows the boys personally as do few sports writers. Read his accounts of

all Packers' games in The Milwaukee Journal sport pages. And if you can't attend—tune in Russ Winnie's broadcasts of the games over WTMJ, The Milwaukee Journal station.



**THE MILWAUKEE JOURNAL**

## EAT JUMBO BREAD

Baked By  
**Bohemian  
Baking  
Co.**

1263 Main Street  
Green Bay  
Phone Adams 1745

### BERTRAND'S

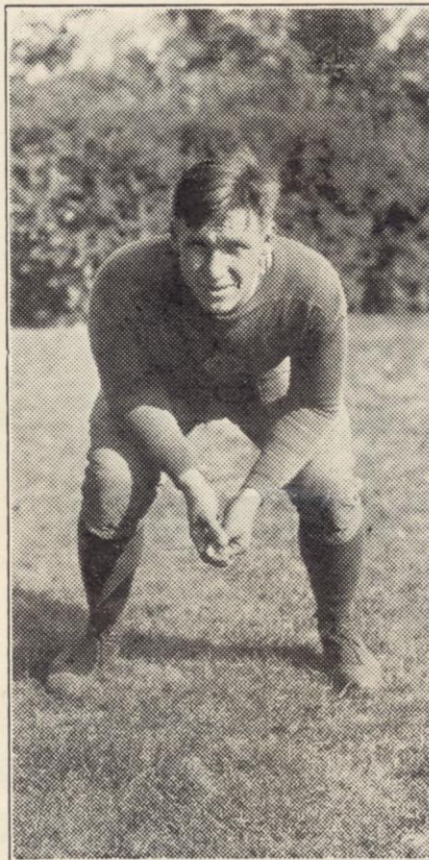
The New Sporting  
Goods Store

Everything in Sporting Goods

220 N. Washington

Adams 2846

**BERTRAND'S**



### BO MOLEND A

Fullback

Bo Molenda, the Packer bone-crushing fullback, had a brilliant season last year and is set to repeat again. He entered under the football spotlight while at the University of Michigan, playing with Benny Friedman and Benny Oosterbaan. Bo signed up with the New York Yankees after leaving the Wolverine school, playing in the backfield for two seasons. Later he was offered a contract with the Packers and accepted. Bo has an ideal build for this position and he utilizes every ounce of muscle. He was placed on the second all-professional eleven.

### GREEN BAY HARDWARE CO.

Green Bay's Leading  
Hardware Store

107 W. WALNUT ST.

We Thank  
Our Advertisers  
For Their  
Co-operation

PHONE HOWARD 420

### LIBERT MOTOR SUPPLY CO.

AUTOMOTIVE SERVICE  
PARTS

1240 MAIN ST.



... if it's the **BEST**  
**'NORTH WESTERN'**  
*has it!*

—where fast, convenient train schedules, modern equipment and a courteous, efficient train personnel are at your service on your journeys south, west or north.



For information, reservations and tickets apply to  
 T. A. CARNEY, Div. Frt. & Pass'r Agent  
 M. W. HOLLISTER, Ticket Agent, Green Bay, Wisconsin

**CHICAGO & NORTH WESTERN RY.**

Right now you have an excellent opportunity to measure the advertising value of our directory. Select five or six people typical of the entire audience, and watch them read the advertising pages before the game and during the intermissions. Please note that few directories are cast aside or thrown away, but instead, are taken home as souvenirs and for others to read



**DICK STAHLMAN**

**Tackle**

One of the veterans of professional football is Dick Stahlman who has played with the New York Giants for several seasons. The Packers purchased Stahlman's release this year because they figured that the big fellow would aid in strengthening the frontwall. Stahlman is the rugged type of griddier who can be sent into a fray for the full sixty minutes and come out of it with a great deal of pep. He will probably be used at tackle this year but if necessary he can also be shifted into a guard position. Much is expected of him this fall.

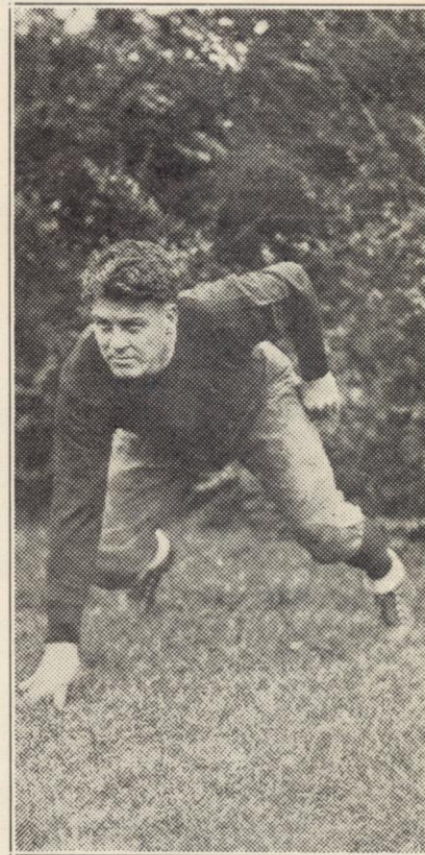
COMPLIMENTS OF

**Cohodas  
 Bros.  
 Co.**

**WHOLESALE  
 FRUITS and  
 PRODUCE**

**SEARS  
 ROEBUCK CO.**

**We Guarantee Satisfaction  
 or Your Money Back**



**RUDY COMSTOCK**

**Guard**

Comstock has been chasing a professional football for several years and needs no more smartening to the pro tricks. He has always been used at guard and was one of the line stars with the Giants last season. Comstock figured prominently in the Packer defeat at the hands of the Giants and rather than let him remain as a menace Coach Lambeau decided his presence was needed in a Bay uniform.



GASOLINE, OILS, WASHING AND GREASING FOR LESS

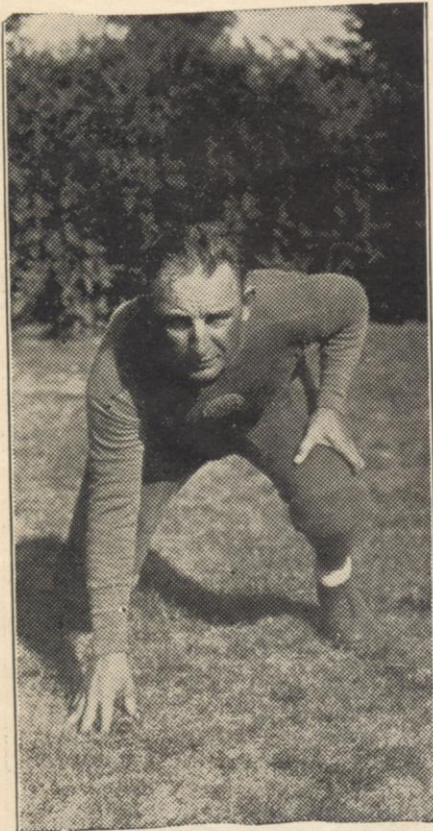
# KATERS OIL CO.

Across From Ball Park

On Highway 141

Let us wash or grease your cars while you are at the game

**FREE PARKING**



**CLAUDE PERRY**

### Tackle

Claude Perry is another Southern boy who joined the Green Bay Packers and immediately made good. Perry played beside Bowdoin for three seasons and also earned mythical ranking with the all-Southern grid teams. He is a husky fellow, as this picture discloses, and he moves down the gridiron with the speed of an end. He is a feared player around the professional league and is poison to all forward pass plays. Perry is a good, consistent man on the offense but he has attained a reputation for his brilliant defensive work in the line.

## ICE REFRIGERATION

Safe—Silent  
Costs Less

Provides Clear Table Ice  
Protects Food Flavors

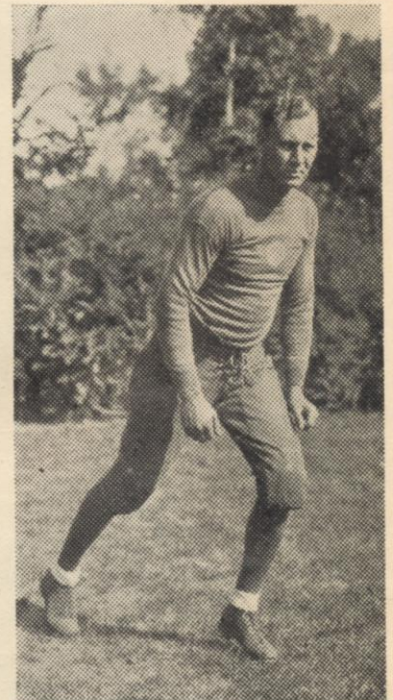
SAVE WITH ICE

## Miller-Rasmussen

Keep You Cool and Warm

ICE — COAL

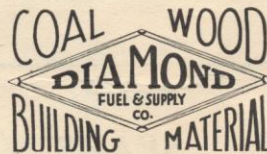
Wholesale and Retail  
PHONE ADAMS TWO



**WUERT ENGLEMANN**

### Halfback

Wuert Englemann, the fleet Packer halfback was graduated from the University of South Dakota, and had three years of varsity football before joining the Packers last year. While in school he established himself as an all-around athlete, displaying as much prowess on the track and cage court as on the gridiron. Although it was his first year of pro football last season, Englemann went to the new occupation with a veneer and successfully made the grade. His brilliant ball carrying last year won many favorable comments from the fans.



COMPLETE LINE OF  
COAL FUEL WOOD, AND  
BUILDING MATERIAL

\* \* \*

1923 Main St.

Phone Adams 5353



COST LESS

WORTH MORE

Direct from Tank Car to Your Car

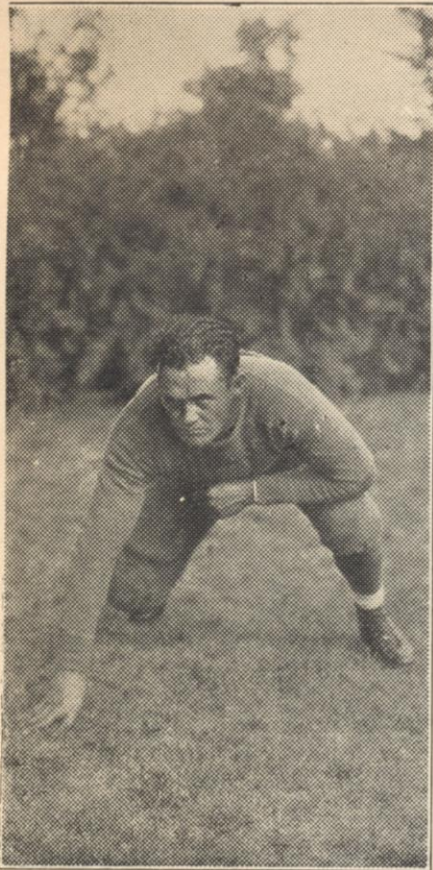
# Washington Oil Co.

2 Stations

701 Main St.

Open 24 Hours

300 S. Washington St.



**JIM BOWDOIN**

**Guard**

Jim Bowdoin, rated as one of the best guards in the pro loop by eastern sports writers last season, is set to start another successful season with the Packers. Jim resides beyond the Mason and Dixon line, having gained his grid experience with the University of Alabama. He played three years of varsity ball with the Alabama eleven and was named on several all-Southern football teams. In addition to being a large man, Bowdoin commands a great amount of speed which he mixes in nicely when filtering through his opponents' lines.

## Graham

SIX and EIGHTS

\$880 to \$2500

Delivered

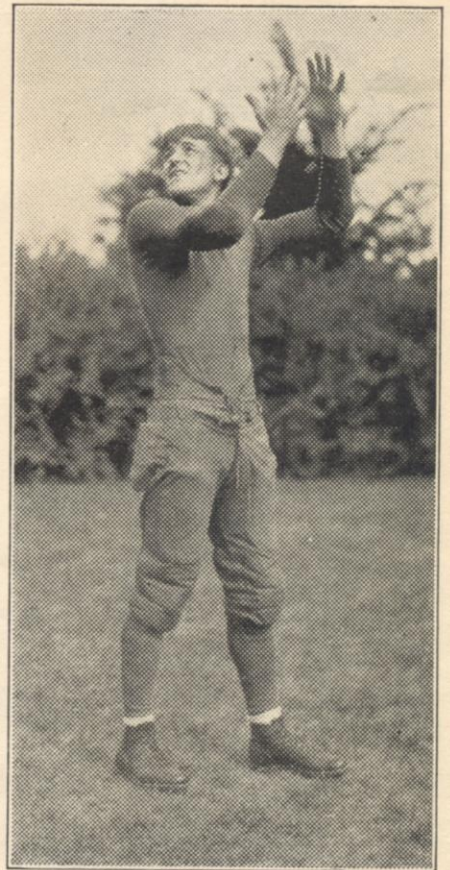
"Graham Wins by Comparison"

WHITE TRUCKS  
and BUSES

## PHILLIP'S Motor Inc.

132 S. Adams St.

Adams 141



**DAVE ZUIDMULDER**

**Halfback**

Dave Zuidmulder is a local product, playing his high school football with East Green Bay. Dave went to St. Ambrose college and later changed over to Georgetown where he played freshman football. Last year he was inserted in the line-up at a halfback position and carried the ball for many good gains. Zuidmulder can also be called on to punt and pass. He keeps in condition during the summer playing baseball with the Green Bay club and with an industrial league team. Dave is starting his second season with the Packer grid squad.

Boosting For

**The Packers**

and

**Ken Radick**

Watch Them Go





## NATURAL ICE CO.

PRODUCERS OF NATURAL ICE

Foot of N. McDonald St.

Phone Adams 176

NATURE'S OWN PRODUCT

THE BEST BY TEST

## Northern Coal & Supply Co.

Dealers in

Coal, Wood and Building Material

Pearl and Arndt Street

Phone Adams 39 Green Bay, Wis. Phone Adams 2082

## HAMILTON FLOWERS

"Flowers of Distinction for All Occasions"

Adams at Cherry

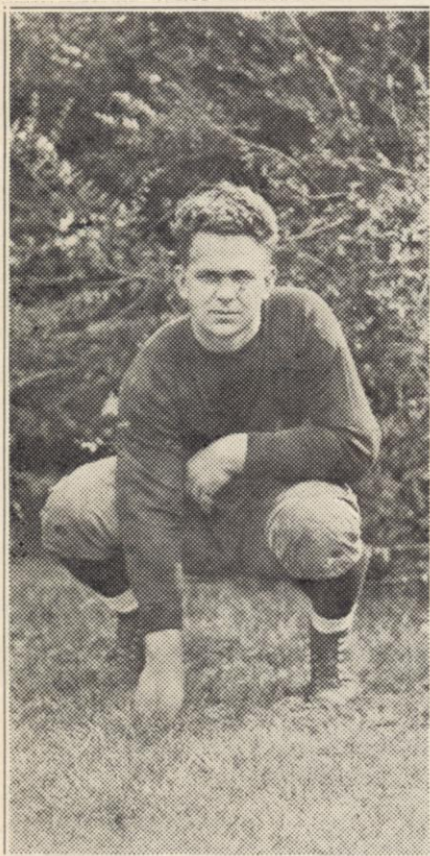
Phone Adams 1153

## LISON'S DRUG STORE

Special Noon Day Luncheon

**35c**

Washington at Main



### MILTON GANTENBEIN

**End**

Milton Gantenbein is coming to the Green Bay Packers after a successful football career with the University of Wisconsin. He was captain of the Badgers last fall and won distinction as a clever defensive player. Gantenbein was wanted by the Packers for this year's team, and he decided to cast his lot with the National champs because his home town is La Crosse. He played end while in high school and was a letterman with the Badgers for three grid campaigns. He received mention on several Western conference football selections.

## RIDGLEY SUPPLY

Glassware  
Bar Supplies  
Bottling Supplies  
Cordials

Sheboygan  
Double Strength  
and  
New London  
Single Strength  
Malt in 5 Gal. Cans

**PHONE  
ADAMS 1231-W**

**1234 Main St.**



### FAY WILSON

**Halfback**

Fay Wilson is expected to solve many of Coach Curly Lambeau's worries in the backfield this year since he is well advanced in the type of football played in the professional league. Wilson played with the New York Giants last year and after Red Cagle was signed he secured his release to play with the Packers. Wilson is a resident of Texas but enjoys playing football in this section of the country. He will probably be used at halfback considerably as he is a brilliant ball carrier and is a dangerous man receiving forward passes.

## Beerntsen Candy Shop

\* \* \*

Home Made Candies, Sodas and  
Sandwiches

\* \* \*

**235 North Broadway  
Phone Adams 1488**



## Policy of The Green Bay Football Corporation

*Member of the National Football League*

The policy of the GREEN BAY FOOTBALL CORPORATION, is to promote clean, healthful sport; to maintain for the City of Green Bay a football team that will be a leader in this great American out-door sport. This team is composed of former College stars and will have the leading football teams of the country as opponents. Our city will gain added publicity in supporting games that will attract nation-wide attention and be recognized as a promoter of clean sports and recreation.



**VERNE LEWELLEN**

**Halfback**

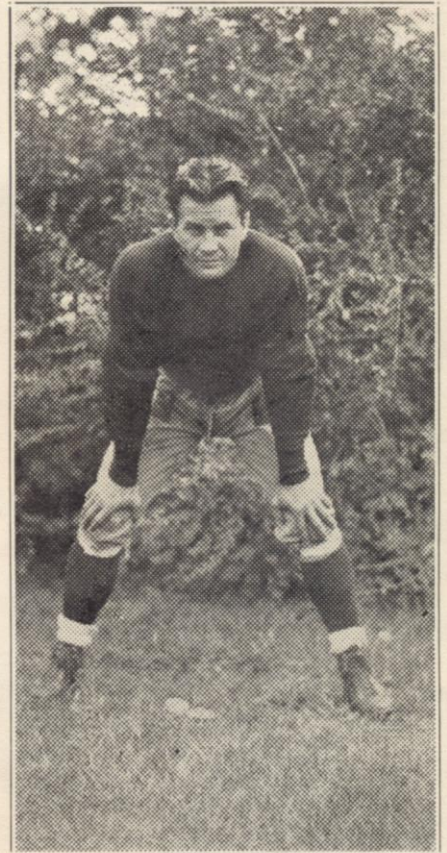
Lewellen is starting his eighth year with the Packers. He started his football career with the University of Nebraska and was much in demand by the professional teams after leaving the Cornhuskers. Lew has been placed on the all-professional team for the past four years, gaining this distinction through his great punting and flawless ball carrying. When a few yards are needed he is always sure to come through. Lew was the leading point scorer with the Green Bay Packers last season. He is an excellent man on the receiving end of passes.

COMPLIMENTS OF

**Joseph F.  
Rothe  
Foundry Co.**

GREEN BAY, WIS.

**"Quality Castings"**



**RUSS SAUNDERS**

**Quarterback**

Green Bay landed a tenth strike when Russ Saunders' name was attached to the Packer payroll. Saunders was an all-American while playing with the University of Southern California. He was one of the most brilliant ball carriers on the Pacific coast and was highly regarded by the sports writers in that vicinity of the country. Saunders is especially effective running back punts and is also gifted with an accurate forward passing arm. He played quarterback for three seasons on the coast and is expected to make the grade in his first year here.

Compliments of

**J. C. PENNEY CO.**

DEPARTMENT STORE



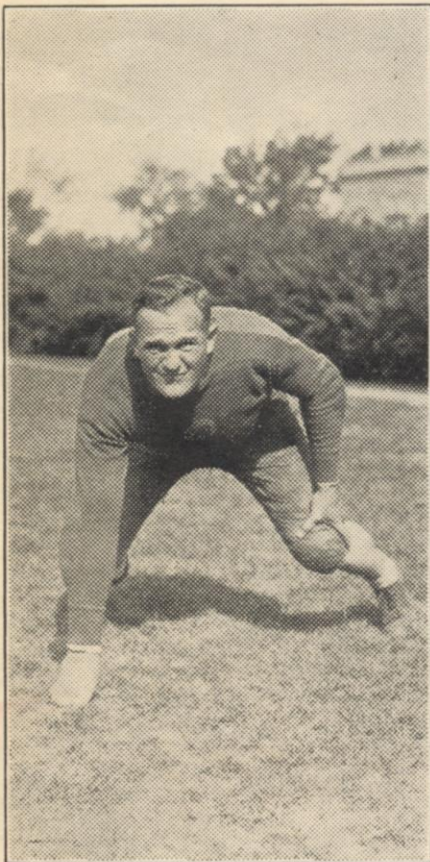
# Landsmann Printing Office

COMPLETE PRINTING SERVICE

226 Pine Street

Phone Adams 146

PRINTERS FOR PACKER FOOTBALL CORPORATION



**CAL HUBBARD**

**Tackle**

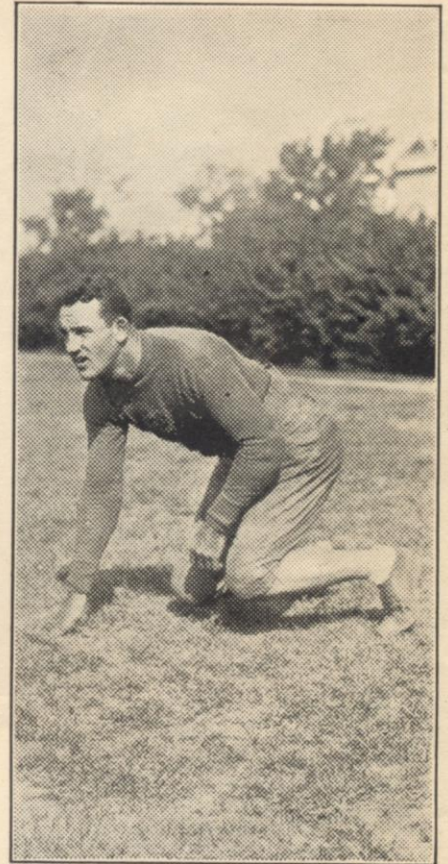
No team in the professional league can dispute the statement that the Packers have the largest football player in the business. Hubbard holds this distinction and because of his bulk he is used regularly at a tackle position. Hubbard formerly played with the New York Giants but he liked the grid scenery in this section of the country and procured his release. He has been used as tackle but is fast for a big man and can play end. Hubbard is a baseball umpire during the summer months, working in the International league.

Compliments of

**Green Bay  
Bottling  
Works**

**Carbonated  
Beverages**

**PHONE ADAMS 3786**



**TOM NASH**

**End**

Tom Nash is starting his fourth year with the Green Bay Packers. He began his gridiron work with the University of Georgia, earning all-American rating. Paired with his team mate, Shiver, Georgia had the best pair of wingmen in the country while he was in school. Nash is a lumbering fellow but is, nevertheless, a fast man. Last year his burst of speed in the New York Giant game surprised everyone, and the best part of it was that he out ran Benny Friedman to score a touchdown. Nash plays baseball with San Antonio. He is an outfielder.





*The Schuster  
Construction Co. Gives A  
Touchdown Smile  
With Every  
Mile*

*Honesty  
In Quality  
Will Always Win—*

*Years of experience have taught us that honesty in quality is the best policy.  
Our many customers will testify that like the "Packers" we always give our best*

*Complete Satisfaction With Every Yard—*

*TELEPHONE 72-R-2*

*General Road Construction*

*The SCHUSTER CO.*

*DENMARK WIS.*



MEAL PLANNING IS EASIER  
WITH DAILY CHOICES FROM

“*Joannes*  
QUALITY”

# FOOD PRODUCTS

In planning your next meal--whether it is breakfast--lunch or dinner, there is a Joannes Quality Food Products for each occasion. Try this new brand and you will agree that it's the best you ever tasted considering the price.

## MONEY BACK GUARANTEE

Your grocer will sell any of the Joannes Quality Food Products on a money-back basis. "If after a thorough trial, you are not fully satisfied, return what's left in the can and he will refund the full purchase price."

CARRIED AT ALL GOOD GROCERS