

OFFICIAL Program

NATIONAL
CHAMPIONS
1931

SUNDAY,
OCT. 2

NATIONAL
CHAMPIONS
1930

KICK OFF
2.00 P.M.

*Get Your
Tickets
Early!*

NATIONAL
CHAMPIONS
1929

10c

New York Giants
vs. Green Bay Packers

Pro Football League Rejects Four Changes in 1932 Rules

Adoption of only two of the new football rules by the National Professional league is a wise move, according to gridiron experts, who have been following the game for years.

By not accepting four major changes in the code drafted for the colleges this season, the post-graduate gridiron circuit keeps all the thrills of the game. The professionals have found that the wedge and other formations recently barred in collegiate contests, have not proven dangerous to professional football.

Changes rejected by the professionals are the rule that declares a ball dead if any part of the carrier's body touches the ground, the flying block and flying tackle, the kick-off rule that would give the kicking side choice of putting the ball in play with a drop kick and would force five members of the receiving side to be placed at a point directly in front of the ball, and the rule covering use of hands on defense.

The professionals believe the rule calling for a dead ball if a player slips and touches the ground would slow up the game. There is very little 'piling on' in the pro sport. It was this angle that the colleges stressed in adoption of the rule. The flying block and tackle are spectacular features of the game that should not be eliminated, the National league directors believe. They also point out that professional football has never had a fatal injury or one that permanently disabled any man, so have no reasons to change these codes.

Belief that the formations in kickoffs have little danger, the 'pros' rejected the section that dictates how a receiving side should be placed. The 'pros' agreed to let the receivers place their men in any formation and to use a natural tee for the kick-off so that long, high kicks can be made.

Use of hands on defense would be one of the hardest rules in the sport to enforce, the professionals believe, so they rejected it. It would be almost impossible for a referee to call this section correctly all of the time.

The two rule changes approved by the professionals cover the new regulations on equipment and the substitution of players in any subsequent period. Frequent changes of players will enable a coach to keep fresh men in the game and it should tend to greatly speed up activities on the gridiron.

RED TOP CABS

CLEAN - SAFE - EFFICIENT

PHONE HOWARD 50

**Beaumont
Coffee
Shop**

*Before
the Game*

**Football
Luncheon**

**QUICK
SERVICE**

*Your Selection
of
Excellent Food*



E. L. LAMBEAU
Coach

Fourteen years of service with the Packers is the record of Earl L. (Curly) Lambeau. The former East high captain is a Green Bay product, and saw service at Notre Dame under the late Knute Rockne. For several years Lambeau starred at halfback, but he now devotes all his time to coaching.

**Beaumont
Hotel**

*After
the Game*

**Dinner
DeLuxe**

6 to 8 P.M.

*One Dollar
the Plate*

WARREN INSURANCE AGENCY

Established 1874

Proven Superior Service

611 Bellin Bldg.

Phone Adams 786

ALL FORMS OF INSURANCE

SCHAUER & SCHUMACHER

Furniture - Funeral Directors

Corner Adams and Walnut

FUNERAL HOME 109 N. ADAMS ST.

Phone Adams 567-W

Green Bay, Wis.



LAVERN DILWEG

— End

After attending high school in Milwaukee, and playing three seasons of varsity football with the Marquette Golden Avalanche, Lavern Dilweg signed up with the Packers, six years ago. He was an all-American while at Marquette, and has won the same honor in the professional game. After graduation, he played one season with the Milwaukee Badgers.

G. F. Clifford
L. A. Dilweg
L. Schuette

Clifford & Dilweg

Attorneys
At Law

313 Bellin Building

Phone Adams 3690

Green Bay, Wis.

AUTO ELECTRIC SERVICE

When You Are In Trouble

Quick Service On

Battery, Ignition, Generator,
Starter, Magneto, and
Tire Repairing

U.S.L.
BATTERIES

EVERYTHING IN
ACCESSORIES

VANS BATTERY &
ELECTRIC

215 N. Adams St.



LESTER PETERSON

— End

After playing three seasons at Texas university, and captaining the team his senior year, Lester Peterson signed up with Portsmouth for one season. This year he decided to cast his lot with Green Bay, and is playing his second year in the pro game.

THE GREEN BAY FOOTBALL CORPORATION expresses its appreciation to the advertisers who have made this program possible. The program is a necessary part of the "Packer" football games which have been such a great asset to this community.



RICHARD STAHLMAN
Tackle

No newcomer to professional football, is Dick Stahlman, veteran Packer tackle. He is starting his second season with Green Bay, being purchased from the New York Giants. Before that time he starred at the University of Chicago.

*The Great
American Value*



**SIX
CYLINDERS**

No More No Less

**BOGDA
MOTOR CO.**

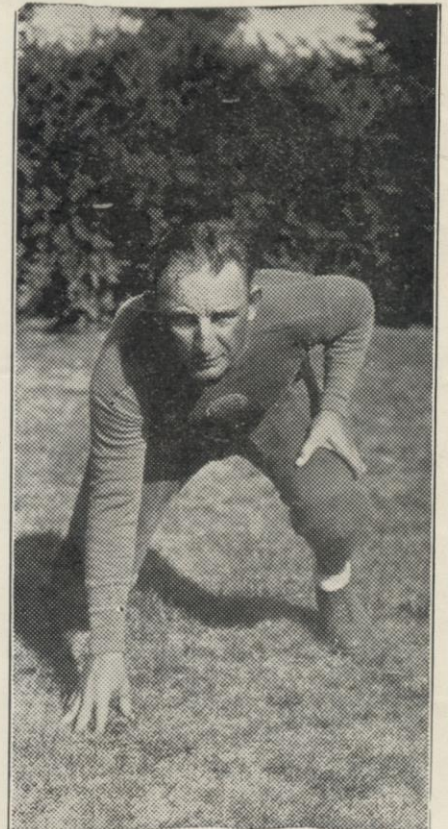
415 Main Street
Howard 32

**VAN'S
HARDWARE**

Exclusive Agency
ESTATE HEATROLAS

Serves - Saves - Satisfies

408 Dousman Street
Adams 848-W



CLAUDE PERRY
Tackle

Claude Perry starred in college at the University of Alabama where he played three years. This will be his sixth year of professional football. Last year he was loaned to the Brooklyn Dodgers and played spectacular ball. His defensive ability is well known around the circuit.

The Columbus Community Club

Green Bay's Largest Recreational Center

DANCING — Wednesday, Friday, Saturday, Sunday

Regular Meals at Regular Prices at the C.C.C. GRILL
Dinners Luncheons Short Orders



AUGUST MICHALSKE
Guard

Termed "the guard of the century," Mike Michalske spent his under-graduate days at Penn State, where he played three years of football, captaining the team his last season. He is now spending his seventh year in the pro game, and his fourth with Green Bay, having served previously with the New York Yankees. For several years he has been a fixture on the all-American professional team.

STUDEBAKER

Sixes and Eights

ROCKNE SIX

Cars and Trucks

THOM MOTOR CAR CO.

619 Main St.

Green Bay, Wisconsin

"Like the 'Packers' Stude-
bakers and Rocknes are
World Champions"

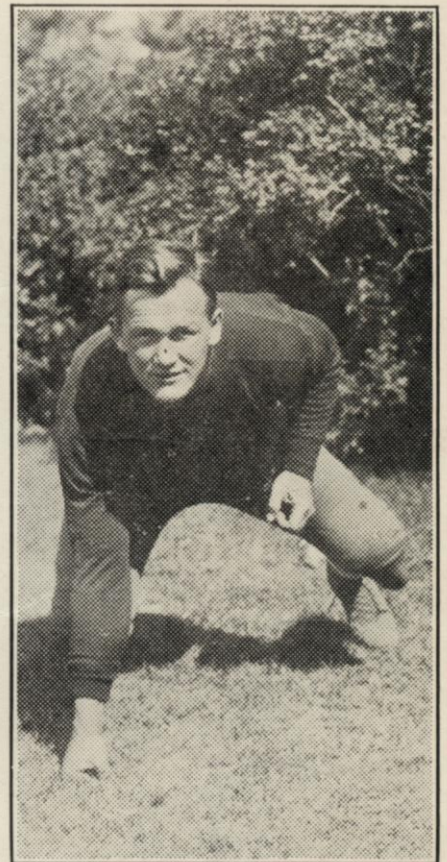
BERTRAND'S

THE NEW SPORTING
GOODS STORE

EVERYTHING IN
SPORTING GOODS

220 North Washington Street
Adams 2846

BERTRAND'S



JOSEPH ZELLER
Guard

Joe Zeller rated last season as one of the most valuable players to his team in the Big Ten conference, starring in the Indiana university line. He is big and fast, and is starting his first season of professional football with the national champions.

PACKER TICKET OFFICES

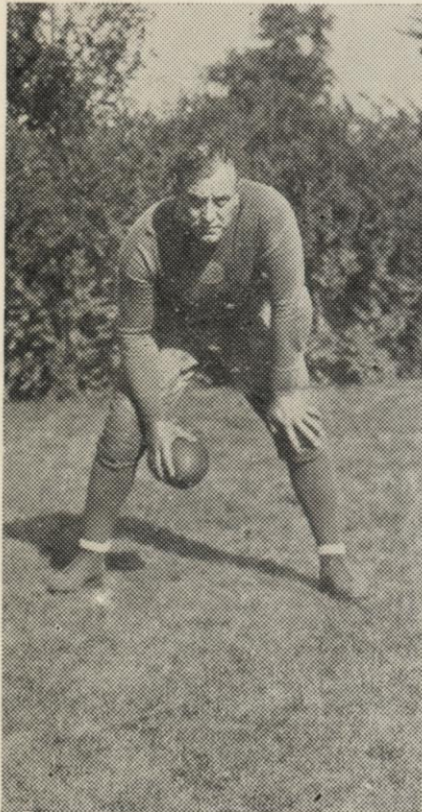
GREEN BAY

Columbus Community Club
 Congress Billiards
 Schweger's Drug Store
 Bosse's News Stand
 Dashnier's Cigar Store
 The Arcade Billiards
 Belleau Drug Store
 Joe Feldhausen's
 Northside Community Club
 John Synnes
 The Club
 Bergin's News Stand

NEENAH—"Mulligan" Seroogy, Postal
 Telegraph
 MANITOWOC—J. J. Stangle Hdw. Co.
 MILWAUKEE—Phillip Gross Hdw. &
 Supply Co.
 APPLETON—Pettibones
 WAUSAU—Jos. N. Pope
 DE PERE—George George.
 DE PERE—Arent's Drug Store
 DENMARK—Denmark Hotel
 STURGEON BAY—Chas. Destache
 STEVENS POINT—Point Sport Goods
 FOND DU LAC—Lalis Drug Store
 MARINETTE—Uecker's Drug Store

OUT-OF-TOWN

CLINTONVILLE—Joe Petcka
 SHAWANO—Stanley Fischer
 SUAMICO—R. B. Vickery
 ESCANABA—Asp's News Stand
 IRON MOUNTAIN—Carlson & Riley
 News Stand
 OCONTO—Ullsperger Drug Store
 OSHKOSH—Jenkins Cigar Store
 PESHTIGO—Segers Drug Store
 BEAVER DAM—Lawrence & Daniel
 Cigar Store
 MADISON—Epstein Bros. News Depot
 TOMAHAWK—Tomahawk Drug Co.



JUGGER EARPE
 Center

Next to Coach Lambeau, Jugger Earpe is the oldest man in point of service on the Green Bay club, having served as center with the Packers for the last ten years. Before coming to the Packers Earpe played at Monmouth college and then one year with the Rock Island Independents.



MOSINEE DUBLTOWLS

America's Finest Fibre
 Towels

USED IN
 EVERY STATE

MANUFACTURED IN
 GREEN BAY
 BY THE

BAY WEST PAPER CO.

A Division of the
 Mosinee Paper Mills Co.



ARTHUR BULTMAN
 Center

Arthur (Red) Bultman, former captain of Marquette university's Golden Avalanche, was a member of the Brooklyn professional team last fall, winning the praise of eastern writers because of his consistent play. Bultman attended high school at West high and later enrolled at Marquette.

MEET THE
 FOOTBALL PLAYERS
 AT THE

CONGRESS

Green Bay's Football
 Headquarters

Football Scores
 Received Here



Fast, Comfortable, Dependable Service

Equipment that is modern and comfortable—
schedules that are convenient and dependable

. . . these are included in the service the Chicago & North Western offers on your trip South, West or North. Direct connections at Chicago with trains for the East.

May we have the pleasure of looking after your travel requirements—of providing you with definite information as to schedules, etc.?

F. B. Martin, Division Freight and Passenger Agent
M. W. Hollister, Ticket Agent, Green Bay, Wis.

CHICAGO & NORTH WESTERN RY.

STANDARD RED CROWN GASOLINE

(Seasonally Balanced)

*Now Adjusted for
Fall Driving*

At All Standard Oil Stations



VERNE LEWELLEN
Halfback

Verne Lewellen has been a standby with the Packers for nine years. He came to Green Bay directly after being graduated from the University of Nebraska where he played and captained that squad. Lewellen is a fine punter and is one of the leading scorers on the team.

RE-ELECT JOE FRANCIS



SHERIFF FOR BROWN COUNTY DEMOCRATIC TICKET

Prepared and Paid for by Jos. Francis,
Green Bay, Wis.

CARL W. JANSSEN
Druggist
DELIVERY SERVICE
East Mason and Irwin
Adams 764

VERHEYDEN & BERO ELECTRIC

311 E. Walnut Northern Bldg.
Green Bay, Wis.



CLYDE VAN SICKLE
Guard

Clyde Van Sickle was an outstanding lineman with the University of Arkansas for three years. In his senior year he was chosen on several all-southern elevens and received some all-American mention by southern writers. He played pro ball with Frankford during the 1930 season.

PRO GRID NOTES

Randolph, Portsmouth center, started the Spartans on their lone touchdown march against the Giants when he grabbed a pass fumbled by Feather before it touched the ground. Soon after, 'Dutch' Clark slashed over the only counter.

The Chicago Bears and Packers staged a 'dog-fight' at Green Bay without either club being able to score. It was slam bang all the way with honors pretty well even up. The Packers had seven first downs to the Bears' six.

Two 'roomies' from the University of Pittsburgh, Rip Collins and Jim MacMurdo, are together again with the Boston Braves. Collins is an end while MacMurdo plays tackle. Both gridders are 'freshmen' in professional football.

Leaders of the N.Y. Giants are expecting great things from Lee 'Brute' Mullenaux, a 200-pound backfielder from Arizona. He has speed to burn and sidesteps nicely in the open field. Mullenaux also kicks fairly well.

Tony Holm, who earned his football spurs at Alabama a few years back, is making a determined bid for the fullback job with the Chicago Cards. Holm is experienced in the post-graduate variety as he was with Portsmouth in 1931.

The Chicago Bears are well supplied with bone-crushing fullbacks as both Bronko Nagurski and Herb Joesting, a pair of former Minnesota footballers, know what it is all about when it comes to cracking through a forward wall.

George Kenneally, who has seen service with about a half dozen clubs in the Pro league, is making the grade with the Boston Braves. Kenneally is still a great end. He was a member of the championship Pottsville team in 1927.

Mitchell, a former Portsmouth high schooler, is showing lots of class behind the line for the Spartans. He is starring as a pass snagger and he caught a toss in the fracas with the Giants which put the ball in scoring distance.

NATIONAL LEAGUE

	W.	L.	T.	Pct.
Brooklyn	1	0	0	1.000
Portsmouth	1	0	0	1.000
Green Bay	1	0	1	1.000
Chicago Bears	0	0	1	.000
Boston	0	0	0	.000
New York	0	1	0	.000
Chicago Cardinals	0	1	0	.000
Stapleton	0	1	0	.000

Last Sunday's Results

Green Bay 0, Chicago Bears 0.
Brooklyn 7, Stapleton 0.
Portsmouth 7, New York 0.

(Non-League Games)

Chicago Cards 19, Battle Creek 0.
Providence 7, Boston 0.

Sunday's Games

New York at Green Bay.
Chicago Bears at Stapleton.
Chicago Cards at Portsmouth
Brooklyn at Boston.

Cal Hubbard and Dick Stallman, Green Bay's veteran tackles, each went 60 minutes in the game against the Bears. Hubbard who knows the rule book like his A B C's also called the turn on several rulings by the officials.

The excess crop of pro footballers will soon be much in evidence as all of the National league teams must cut down to the 20 player limit after the third game. Some of the clubs have been carrying some 30 odd gridders.

George Lawrie, veteran Chicago football official, is drawing assignments again this fall in the National league. Lawrie has been handling the post-graduate games for a number of years and is well liked by the team executives.

Dan Blaine of the Stapleton club is making arrangements to handle a bumper throng this week end at Staten Island as the fast going Chicago Bears will be the attraction against Coach Harold Hanson's gridiron machine.

Professional football will make its debut in Boston on Sunday as Lud Wray's Braves will be at home to Benny Friedman's Brooklyn Dodgers. The Boston management has mapped an attractive program for the opening fracas.

Jack Chevigny and his Chicago Cardinals will match their gridiron skill against the Spartans at Portsmouth this Sunday. This tilt should provide plenty of thrills for the spectators as both elevens have a good air attack.

Jerry Cronin, one of the greatest all-around athletes, ever developed at Rutgers College, is the newest addition to the Brooklyn squad. Cronin is a big lanky end weighing about 200 pounds. He is right at home snagging passes.

The Providence Steamrollers, who are playing free-lance football this fall, took the Boston National league team into camp last Sunday, 9 to 0. Tommy Dowler, ex-Colgate star, intercepted a pass and ran 50 yards for a touchdown.

The Chicago Cardinals filled in an open date last Sunday by taking the Battle Creek, Mich., eleven into camp, 19 to 0. Hill, Tony Holm and Mike McNally came through with markers for the Cards. Battle Creek made but one first down.

Jack Grossman, recruit Brooklyn back, who promises to be one of the sensations of the Pro wheel this season, made the only score in the game against Stapleton last Sunday. He made a wide end run for a fourth quarter touchdown.

According to President Joe F. Carr, the attendance at the National league games so far this season is very encouraging. Portsmouth had a big house for the Giants, while the Chicago Bears performed before 12,000 at Green Bay.

The New York Giants are scheduled to make their annual appearance of the season in Green Bay on Sunday. Coach Steve Owens' aggregation will head for Wisconsin direct from their training camp at Magnetic Springs, O.

THE CLUB

Where Football Fans Always Meet

Across From Milwaukee Depot - Crooks and S. Washington Sts.



After the Game Enjoy
the Best in Screen
Entertainment

Sunday Only - - -

LEW AYRES in
"O.K. America"

Mon. - Tues. - Wed.
October 3d, 4th and 5th

DOLORES DELRIO & JOEL McCREA
in King Vidor's Spectacular Production
"Bird of Paradise"

BARGAIN
PRICES
NOW!
DAILY
25c
to 6:00 P.M.
SUNDAYS
25c to 1:30

ASTOR HOTEL

The Home of the
"Packers"

J. GUERTS, Manager.

209-213 N. Adams St.

Green Bay

PACKERS

11 Grove	Michigan State.....	180	Quarterback
13 Bruder	Northwestern.....	199	Halfback
14 Fitzgibbons	Creighton.....	183	Quarterback
15 Shelley	Texas.....	192	Halfback
16 Zeller	Indiana.....	198	Guard
19 Michaleske	Penn State.....	215	Guard
20 Blood	Minnesota.....	195	Halfback
21 Gantenbein	Wisconsin.....	210	End
22 Dilweg	Marquette.....	192	End
24 Perry	Alabama.....	201	Tackle
25 Englemann	South Dakota.....	195	Halfback
29 Peterson	Texas.....	212	End
32 Comstock	Georgetown.....	208	Guard
33 Hinkle	Bucknell.....	205	Fullback
34 Stahlman	Chicago.....	215	Tackle
35 Nash	Georgia.....	204	End
39 Earpe	Monmouth.....	257	Center
40 Hubbard	Geneva.....	255	Tackle
41 Herber	St. Regis.....	205	Halfback
42 O'Boyle	Notre Dame.....	180	Quarterback
43 McCrary	Georgia.....	206	Halfback
45 Bultman	Marquette.....	199	Center
46 Lewellen	Nebraska.....	178	Halfback
52 Rose	Texas.....	195	End
56 Barragar	S. California.....	215	Center
57 VanSickle	Arkansas.....	224	Tackle

Referee:—George Lawrie, Chicago.

Umpire:—Duncan Annan, Chicago.

Head Linesman: Wilfred Smith, Chicago.

DINE Hotel Northland

A Schroeder Hotel

SPECIAL
TABLE DE HOTE
DINNERS \$1.00

A BEAUTIFUL PLACE

Homelike — Comfortable
Fireproof

SLEEP IN SAFETY

Phone
HOWard 2372

"PACKER"
TICKET OFFICE

Columbus Community
Club

Open From 9 A.M. to 9 P.M.

GET YOUR
TICKETS EARLY

WALKER'S

Cleaners and Tailors

WE CALL AND
DELIVER

404 W. Walnut St.

Howard 1475

ELECT

C. G. CHADEK

REPUBLICAN CANDIDATE FOR

DISTRICT ATTORNEY

Prepared and Paid for by Cletus G. Chadek, Green Bay, Wis.

NEED A LOAN?

Come to Money Corporation

You can borrow here on your good reputation — get the cash you need NOW — and repay the loan in convenient amounts from your wages or monthly income.

COME IN TODAY AND TALK IT OVER



230 E. Walnut St.

Adams 602

*While You're Downtown
Have Your Car Serviced at*

EISENMAN & GAIE

WILLARD BATTERIES—INDIA TIRES
SINCLAIR GAS AND OILS—GREASING
AUTO ELECTRICIANS—TIRE REPAIRING

Walnut at Madison

Open Daily 7:00 A.M. to 10:00 P.M.



THE SIGN OF

Quality Milk

THE FAIRMONT
CREAMERY CO.

ADAMS 6000

NEW YORK GIANTS

0	Mulleneaux	Arizona.....	201	Back
2	Murtagh	Georgetown.....	191	Center
3	Grant	New York University.....	225	Tackle
4	Caywood	St. John's.....	220	Guard
5	Vokaty	Heidelberg.....	190	Back
6	Flaherty	Gonzaga.....	187	End
7	Hein	Washington State.....	201	Center
8	Feather	Kansas Aggies.....	197	Back
9	Munday	Emporia.....	200	Tackle
10	Jones	Bucknell.....	210	Guard
11	Gibson	Grove City.....	205	Guard
12	Cagle	West Point.....	175	Back
13	Hagerty	Georgetown.....	170	Back
14	Workman	Ohio State.....	175	Back
15	Campbell	Emporia Teachers.....	198	End
17	Badgro	Southern California.....	190	End
18	Burnett	Emporia Teachers.....	185	Back
20	Kelly	Kentucky.....	185	Back
22	Moran	Carnegie Tech.....	190	Back
23	Powell	Davis-Elkins.....	210	End
29	Irvin	Davis-Elkins.....	230	Tackle
36	Owen	Oklahoma A. & M.....	210	Tackle
55	Dubofsky	Georgetown.....	210	Guard

Green Bay Glass Co.

Chas. Mathys

Louis Mathys

AUTO GLASS INSTALLED
GLASS FURNITURE TOPS
BUILDERS' GLASS

Glass of All Kinds

113 S. Broadway

Adams 623

AFTER THE GAME A GOOD SHOW
AWAITS YOU AT THE

ORPHEUM

4 BIG ACTS
VAUDEVILLE On Stage

On Screen Dorothy Mackail and Donald Cook in
"SAFE IN HELL"

STARTING MONDAY

William Powell and Kay Francis in "Jewel Robbery"



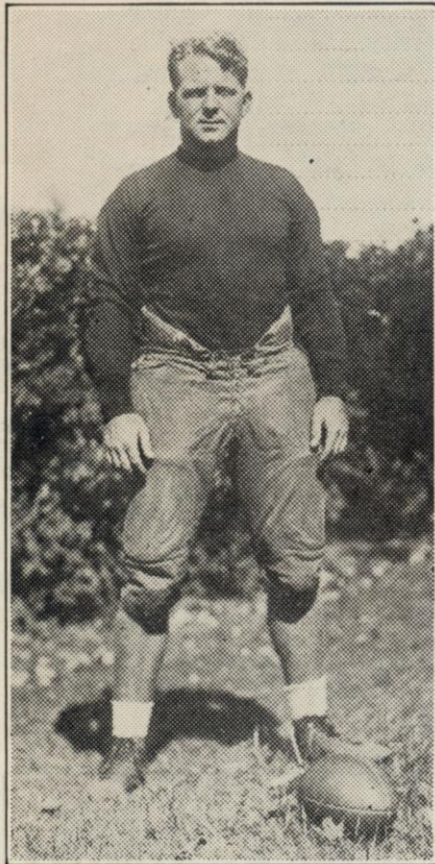
+ STUEBE'S

is the Point After Touchdown

THE MARGIN OF SUPERIORITY OVER
THE ORDINARY CLASS OF PRINTING

STUEBE BINDING & PRINTING CO.

PRINTERS - BINDERS - OFFICE OUTFITTERS
218 PINE ST. ADAMS 818 GREEN BAY, WIS.



NATE BARRAGAR
Center

Although Barragar's professional football career has not been long, it has been noteworthy. Before entering the post-graduate ranks, he starred first on the high school team at San Fernando, Cal., and then for three seasons on the University of Southern California varsity.

ELECT H. L. COPPENS

REPUBLICAN
CANDIDATE FOR

SHERIFF

MY PLEDGE

is to regulate the conditions
of today

Prepared and Paid For By
H. L. Coppens, Green Bay, Wis.

BRETTING Tractor & Equipment Co.

"CATERPILLAR"

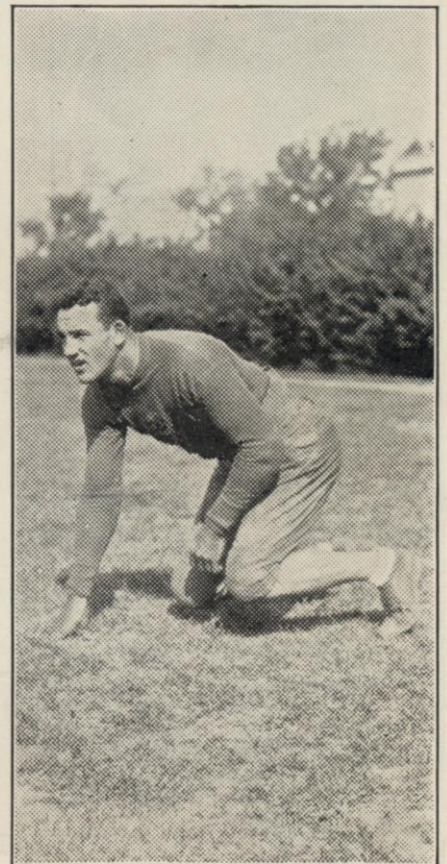
Reg. U.S. Pat. Office

Tractors

Road Machinery

Farm Machinery

GREEN BAY, WIS.



TOM A. NASH
End

No all-American team during Tom Nash's last season at Georgia university neglected to mention the big, rangy end at a flank position. Although he is a big, lumbering fellow, Tommy possesses the ability to move over the ground with all kinds of speed. He has spent all of his five years in the professional game with the Packers.

No Trouble—No Fuss—

to prepare *Valley Farm*
REIMER'S MEAT PRODUCTS

**Made Fresh
Daily**

**100% Pure Pork Sausage
or
Sliced Canadian Bacon**

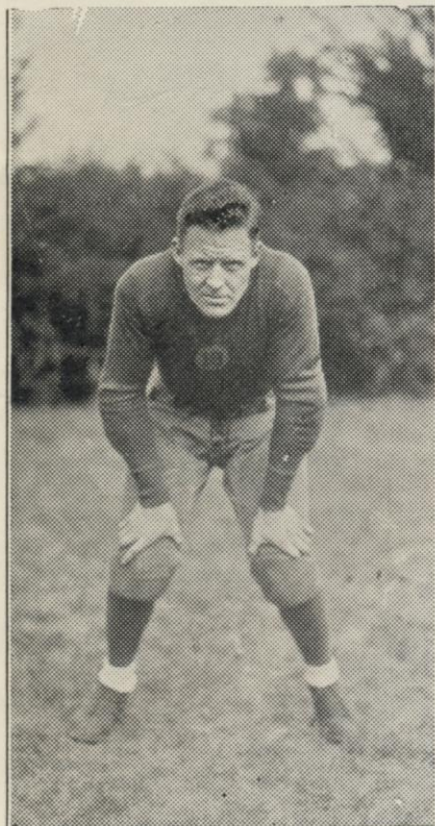
*They are good
any way or time
you serve them*

**REIMER'S
MEAT PRODUCTS
GREEN BAY**

RIGHT NOW—

You have an excellent opportunity to measure the advertising value of our directory. Select five or six people typical of the entire audience, and watch them read the advertising pages before the game and during the intermissions.

Please note that few directories are cast aside or thrown away, but instead, are taken home as souvenirs and for others to read.



PAUL FITZGIBBONS
Quarterback

Fitz has been playing professional football for the last six years, four of which were spent with the Packers. Previously he played with Ernie Nevers' Duluth Eskimos, and later with the Chicago Cardinals. His under-graduate football was picked up at Creighton.

RIDGLEY SUPPLY

**Bar Supplies
Bottling Supplies
Glass and Stone
Ware for Home Use**

**New London Single
and Double Strength
Malt in 5-gal. Cans**

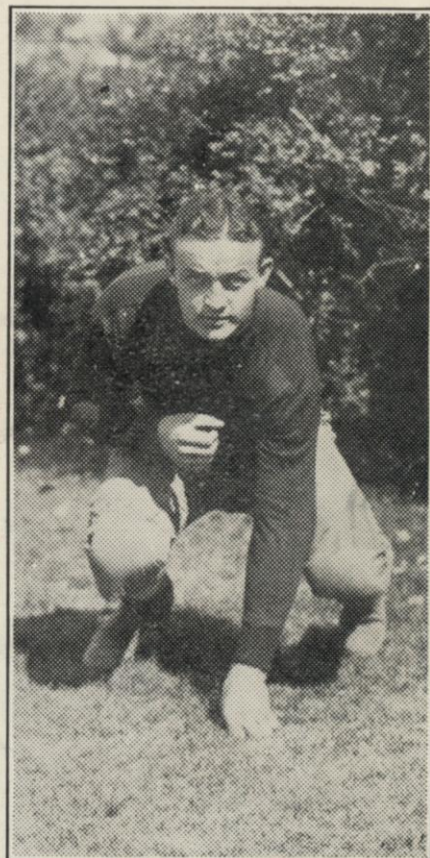
**Wholesale and
Retail**

**Phone Adams 1231-W
1234 Main St.**

Compliments of

**DIANA
Manufacturing
Company**

**DOWNIES
SANITARY NAPKINS**



CLARK HINKLE
Fullback

The Bucknell fullback won hearty praise for his shifty backfield tactics while burning up eastern gridirons last season, but he is expected to attract as much attention now that he is transplanted to the midwest. Hinkel rated as one of the best punters in the east. It's his first year with the Packers.

ASK FOR

Evergreen
SUMMIT TISSUE

"It's Borated"

Made in Green Bay by
Hoberg Paper & Fibre Co.

Bell Lumber Co.



Phone the Lumber Number

Howard 2x4 2x4

Gordon Bent Co.

SPORTING GOODS

ATHLETIC OUTFITTERS

for

Football — Basketball
Hunters

ALL FOR SPORT

111 Main St. Green Bay, Wis.



HURDIS McCRARY
Halfback

Another four-year man with the Packers is Hurdis McCrary, who has starred both at halfback and fullback. Hurd was an all-American in 1927 and 1928 while attending Georgia university, and has been a fixture on the Green Bay squad ever since.

Popular Choice!



to **MILWAUKEE CHICAGO**

No. 10

Lv. Green Bay Daily . . . 7:00 a. m.
Ar. Milwaukee 9:55 a. m.
Ar. Chicago 11:45 a. m.

Parlor car, coaches

The Copper Country Limited

Lv. Green Bay Daily . . . 1:35 a. m.
Ar. Milwaukee 5:25 a. m.
Ar. Chicago 7:50 a. m.
Dining car serving breakfast; coaches.
Sleeping car (open for occupancy at 9:30 p. m.)

No. 46

Lv. Green Bay Ex. Sun. . . 12:30 p. m.
Ar. Milwaukee 3:50 p. m.
Ar. Chicago 5:45 p. m.

To Northern Michigan

The Copper Country Limited leaves Green Bay 10:30 p. m. **The Iron Country Limited** leaves Green Bay 3:55 a. m.

Green Bay Ticket Office

Phone Adams 866

G. C. Hiltel, Div. Pass. Agent

Phone Adams 6170

The MILWAUKEE ROAD 1753



DEXTER SHELLEY
Halfback

Dexter Shelley, former all-southern conference halfback at the University of Texas, played professional football with the Providence Steamrollers in 1931. Last year Shelley was one of the best forward passers in the pro league. Shelley is also an expert at kicking goals.

**Green Bay Shoe
Repairing Co.**

Shoes Repaired While You Wait
or Called For and Delivered

PHONE ADAMS 534
214 Cherry St.
Green Bay

GREEN BAY AUTO PARTS

Parts For All
Cars and Trucks

508 North Monroe Avenue
Green Bay, Wis.

BRANCH STORE
827 West College Avenue
Appleton, Wis.

Machine Shop Service

SEVILLE GRILL

STEAKS
Our Specialty

FOX THEATRE BUILDING
111 S. Washington Street
Green Bay, Wis.

LANDSMANN PRINTING OFFICE

*Complete Printing
Service*

226 Pine Street
Phone Adams 146



ALFRED ROSE

End

Alfred Rose is another newcomer on the Packer squad, having played with the University of Texas and last season with the Providence Steamrollers. In summarizing the seasons of 1928 and 1929 Spalding's guide rated him as one of the greatest ends ever developed at Texas.

BOSSE'S NEWS DEPOT

Corner
Cherry and Adams
Streets

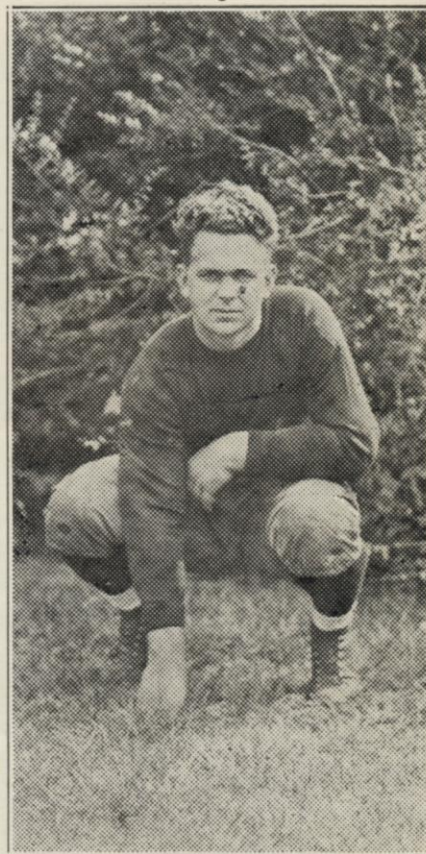
CANDY
TOBACCO
and the
Finest Selection of
PIPES
in the City

Phone Adams 101

THE STILLER CO.

210-212 Cherry St.

Kodaks
Music
Birds and
Supplies



MILTON GANTENBEIN

End

Milton Gantenbein hails from the University of Wisconsin where he was captain in his final year. He was mentioned on several all-western teams in his last year in the university. Gantenbein won a name for himself last year with his spectacular blocking and dependable tackling.

N. SKOGG & SONS

PLUMBING
AND
HEATING

HEIL COMBUSTION
OIL BURNERS

114 S. Broadway Adams 2141

THE C. REISS COAL CO.

—
Coal of Quality
—

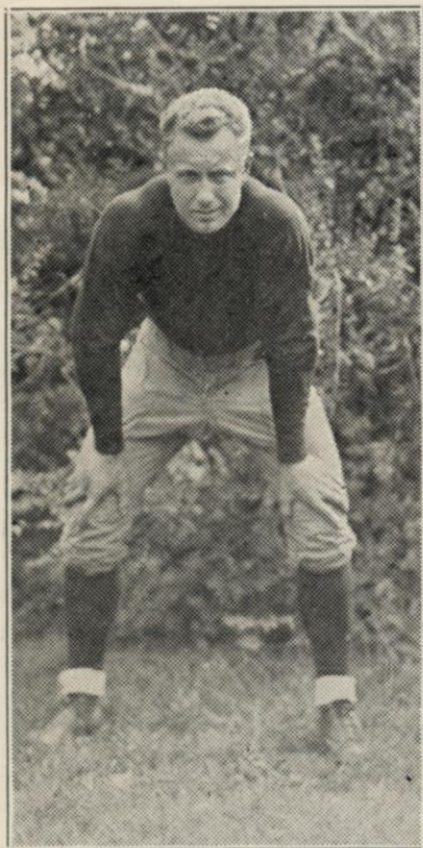
PHONE ADAMS 915

Green Bay, Wis.

JACK'S Towel and Linen Supply

COMPLETE
TOWEL
SERVICE

918 Porlier Street
Adams 771



HENRY BRUDER
Halfback

Hank Bruder gained his football reputation at Northwestern university and when he joined the Packers last year he immediately lived up to advanced notices. Bruder was captain at Northwestern in his senior year and gained the nickname (Hard Luck Hank) because of a series of accidents.

CLARENCE DORSCHER

DEMOCRATIC
CANDIDATE FOR

DISTRICT ATTORNEY

Prepared and Paid For By
Clarence Dorschel, Green Bay, Wis.

“MASSOPUST”

Art - Signs - Gifts

216 E. Walnut St.

EAT AT
**HENRY RYAN'S
BROADWAY HOTEL**
Broadway and Dousman
Green Bay, Wis.

**PUBLIC ADDRESS
SYSTEMS**
FOR ALL OCCASIONS
PLATTEN RADIO CO.
Green Bay, Wis.

Don't Fail to See Our New
“RED ARROW”
HOOD TIRES
Green Bay
Vulcanizing Company
711 Main St. Green Bay



MARGER APSIT
Halfback

Marger Apsit gained his early football training at the University of Southern California where he was a regular for three seasons. After being graduated from Southern California Apsit joined the Frankfort Yellowjackets. He is an excellent blocker, and a fair passer and punter.

CALL COOKSON

About Your Refinancing
About Your Renting
About Your Selling

Service and Quick Action

COOKSON REALTY EXCHANGE INC.

222 E. Walnut Adams 2821

Compliments of

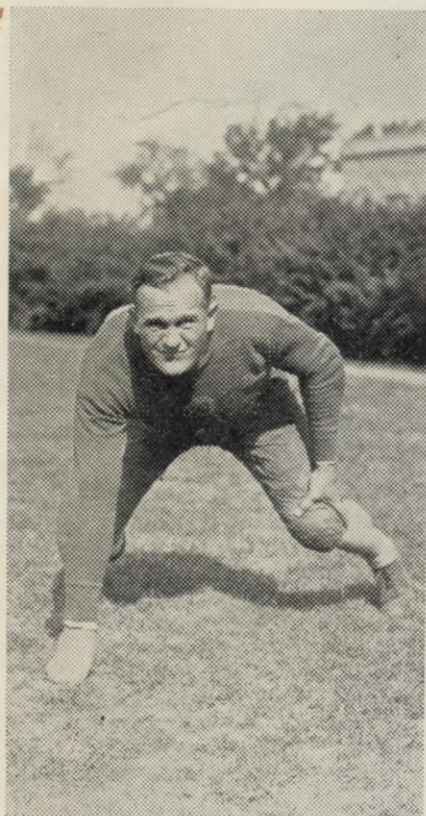
GREEN BAY DROP FORGE COMPANY

1341 South State Street
Green Bay, Wis.

*Lawrence
Tire and Battery Co.*

SEIBERLING TIRES AND
U.S.L. BATTERIES

435 Main St. Green Bay, Wis.



CAL HUBBARD
Tackle

Cal Hubbard started his career as a professional football player with the New York Giants. He was graduated from Geneva and captained the team in his final year of college football. Hubbard has been playing with the Packers for four years and is one of the largest men in the league.

Compliments of

Green Bay Bottling Works

Carbonated Beverages

PHONE ADAMS 3786



ROGER GROVE
Quarterback

Roger Grove, the former Michigan State star, is starting his second season of pro ball with the Packers. He is a quarterback by trade but because of his great speed can be shifted to halfback without detracting from his value. Grove is a fair passer and is also a good punter.

PANKRATZ MOTORS

Distributors

GRAHAM
Six and Eights

FIRESTONE
Tires and Batteries

REPAIRING
All Makes of Cars

719 South Broadway
Adams 5611

Compliments of

SINCLAIR REFINING CO.

1045 McDonald Street
Howard 764
Green Bay, Wisconsin



Complete Line of
COAL, FUEL WOOD and
BUILDING MATERIAL

1923 Main St. Adams 5353

H. DANZ

320 Main St. Adams 508

Factory Distributors

PAINTS - ROOFING
ROOF COATINGS
and
SHEET METAL
WORK



RUDY COMSTOCK
Guard

Rudy Comstock has been playing professional football with the Packers for the last two years. Prior to coming to Green Bay he played three seasons of pro ball with the New York Giants. He was a regular at Georgetown for three years and won honors on several all-eastern teams.

Compliments of
**JOSEPH F.
ROTHER
FOUNDRY
CO.**

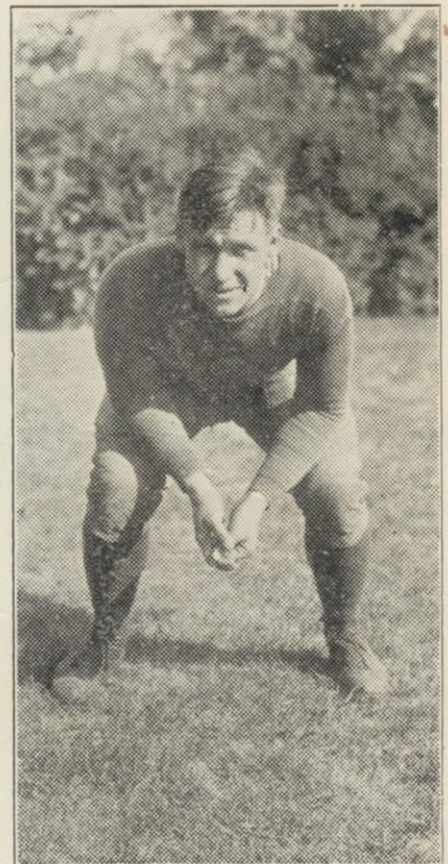
*“Quality
Castings”*

BAIERL'S

Incorporated

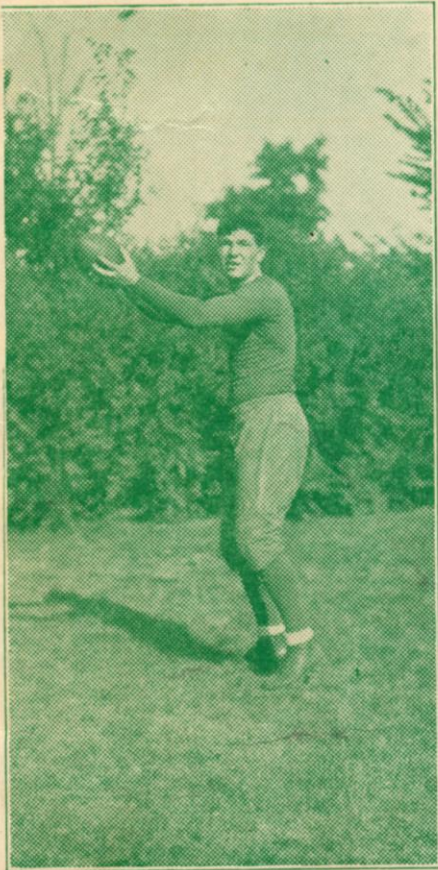
**CLEANERS
and
TAILORS**

Washington Street at Stuart
Green Bay, Wis.



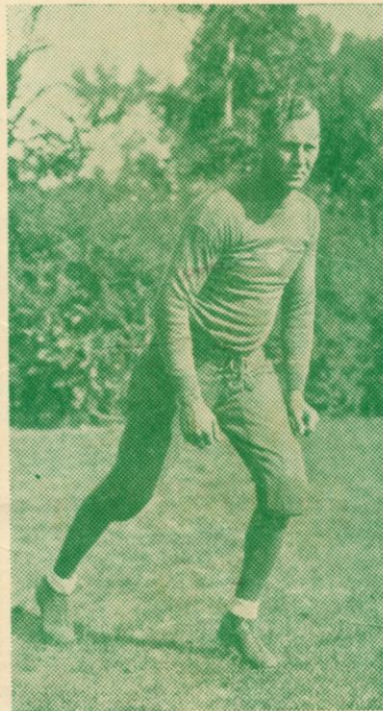
BO MOLEND
Fullback

Bo Molenda, one of the greatest fullbacks ever turned out at the University of Michigan, is playing his fifth year of professional football with the Packers. He played one season with the New York Yankees before coming to Green Bay. Molenda's home is in California.



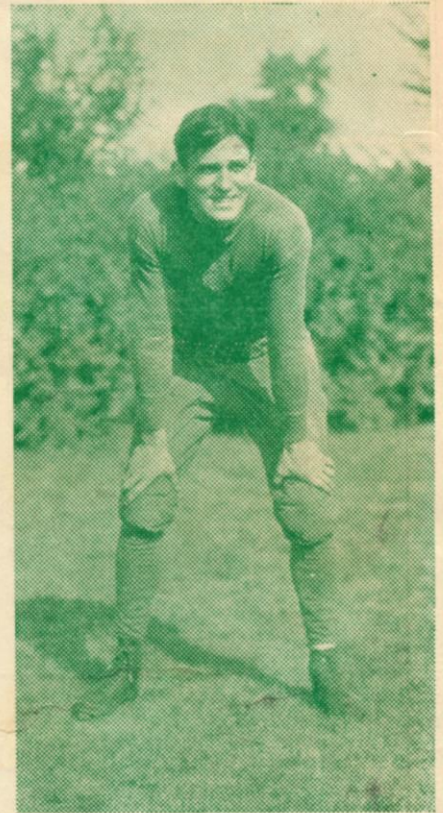
ARNOLD HERBER
Quarterback

Arnold Herber is a product of Green Bay, having attended West High. After completing his studies in this city he went to the University of Wisconsin and won the freshman football captaincy. Later he sent to Regis college and was one of the outstanding men with that school.



WUERT ENGLEMANN
Halfback

Wuert Englemann is starting his third season of professional football with the Packers. He played three years of college football at South Dakota and captained that squad in his senior year. Englemann is the fastest man on the squad and when once loose is hard to stop.



JOHN BLOOD
Halfback

One of the fastest men on the Packer squad, and certainly the professional grid game's most colorful player, is Johnny Blood, right halfback. Blood is a dangerous open field runner, and has few equals at snaring passes. Last year he led the league in scoring. His previous pro experience was with the Duluth Eskimos, but for the past four years he has played with the Packers.

The
FOOD PRODUCT
with the
“*Joannes*
QUALITY”

SIGNATURE
. . . is the
FOOD
PRODUCT

you should use
It is a Dependable Food

*Your Local Independent
Grocer Carries a
Complete Stock*