

PRICE 15 CENTS

N. Y. FOOTBALL GIANTS
VS.
STAPLETON



BENNY FRIEDMAN
Captain, N. Y. Giants

Sunday
October 13, 1929

Polo Grounds
New York



N. Y. FOOTBALL GIANTS SQUAD FOR 1929

Stapleton Stars in Today's Game

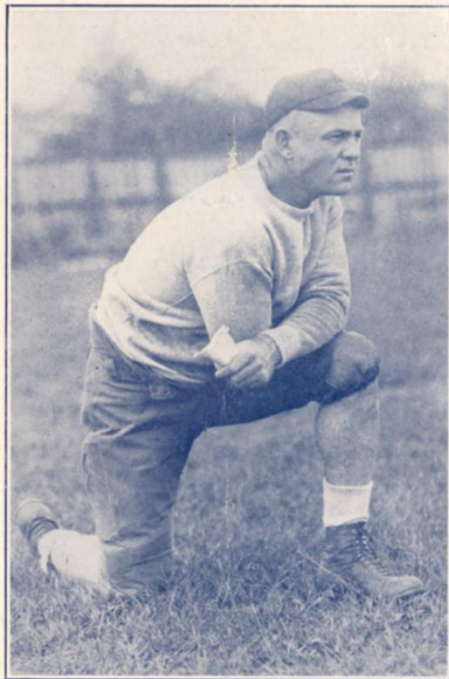


KEN STRONG



FRANK BRIANTE

The Giants New Coach



LEROY ANDREWS
(Kansas State College)

Line-Up and Numbers of Both Teams

Referee—TOM THORP, Columbia

Umpire—JOHN HENNESSY, St. John's

Field Judge—JACK REARDON, New Hampshire State

NEW YORK GIANTS

No.	Player	Weight	Position	Weight	Player	No.
44	FLAHERTY	190	Left End	185	STEIN	15
55	OWEN (Steve)	230	Left Tackle	230	WILLIAMS	14
0	McMULLEN	220	Left Guard	195	SKUDIN	13
7	WESTOPAL	196	Center	200	DUNN	12
29	CAYWOOD	218	Right Guard	205	GODWIN	11
36	OWEN (Bill)	215	Right Tackle	200	MILLER	10
9	CAMPBELL	180	Right End	175	LEARY	9
1	FRIEDMAN	183	Quarterback	165	KUCZO	6
4	SEDBROOKE	186	Left Halfback	200	STRONG	2
6	WILSON	189	Right Halfback	202	WYCOFF	1
33	FEATHER	192	Fullback	195	REARDON	7

STAPLETON

NEW YORK GIANTS

No.	Player	Weight	Position	Former College
0	McMULLEN	230	Guard	Nebraska
1	FRIEDMAN	185	Quarterback	Michigan
2	RICE	165	Quarterback	
4	SEDBROOKE	175	Halfback	Phillips
5	HAGERTY	165	Quarterback	Georgetown
6	WILSON	190	Halfback	Texas Aggies
7	WESTOUPAL	190	Center	Nebraska
8	PLANSKY	205	Halfback	Georgetown
9	CAMPBELL	185	End	Kansas State
11	HOWARD	215	Guard	Oklahoma
15	MUNN	180	End	Kansas Aggies
17	ASHBURN	190	End	Nebraska
25	SNYDER	190	Fullback	Maryland U.
29	CAYWOOD	230	Guard	St. Johns
30	LYON	235	Tackle	Kansas Aggies
33	FEATHER	190	Fullback	Kansas Aggies
36	OWEN (Bill)	210	Tackle	Phillips
41	MEILZINAR	250		Carnegie Tech.
44	FLAHERTY	195	End	Gonzaga
48	MORAN	190	Halfback	Carnegie Tech.
50	MURTAGH	190	Center	Georgetown
55	OWEN (Steve)	235	Tackle	Phillips

Head Coach—LEROY B. ANDREW, Kansas State.

STAPLETON

No.	Player	Weight	Position	Former College
1	WYCOFF	202	Right Halfback	Georgia Tech.
2	STRONG	200	Left Halfback	N. Y. U.
3	BRIANTE	175	Back	N. Y. U.
4	MARTIN	180	Back	Missouri
5	WILLIAMS	180	Back	Georgia Tech.
6	KUCZO	165	Quarterback	Villanova
7	REARDON	195	Fullback	N. Y. U.
8	LOMASNEY	170	Back	Villanova
9	LEARY	175	Right End	Fordham
10	MILLER	180	Right Tackle	N. Y. U.
11	GODWIN	205	Right Guard	Georgia Tech.
12	DUNN	200	Center	N. Y. U.
13	SKUDIN	195	Left Guard	N. Y. U.
14	WILLIAMS (Cy.)	200	Left Tackle	Fla. University
15	STEIN	185	Left End	Univer. of Penn.
16	PESSALANO	210	Tackle	Villanova
17	LORD	195	Guard	Rutgers
18	McGEE	198	Center	Kansas Aggies
19	SATENSTEIN	190	Guard	N. Y. U.

Head Coach—DOUG. WYCOFF.

Summary of the More Important Penalties

The Number of the Penalty Will be Posted on the Irwin Scoreboard Whenever Possible

1	Offside, both sides.....	No penalty	21	Substitute communicating before first play.....	15 yards
2	Offside.....	5 yards	22	Unnecessary roughness.....	15 yards
3	Holding, etc., by defensive side.....	5 yards	23	Pushing, pulling, interlocked interference, etc.....	15 yards
4	Second or third incompleting forward pass during same series of downs.....	5 yards	24	Intentional throwing forward pass to ground.....	15 yards
5	Man in motion—no shift.....	5 yards	25	Leaving field during one minute intermission.....	15 yards
6	Crawling.....	5 yards	26	Man going on field without permission.....	15 yards
7	Taking out time more than three times during half.....	5 yards	27	More than one non-playing man going on field.....	15 yards
8	Running into kicker.....	5 yards	28	Coaching from sidelines.....	15 yards
9	Substitute failing to report.....	5 yards	29	Hurdling, tripping, piling up.....	15 yards
10	Unreasonable delay in putting ball in play.....	5 yards	30	Unsportsmanlike conduct.....	15 yards
11	Starting forward before ball.....	5 yards	31	Clipping from behind.....	25 yards
12	Fair catch, taking more than two steps.....	5 yards	32	Man in motion on shift.....	15 yards
13	Attempt to draw opponents offside.....	5 yards	33	Delay in starting game or second half.....	25 yards
14	Interference with opponents before ball in play.....	5 yards	34	Interference on forward by offense... Loss of ball	
15	Illegal tackling.....	5 yards	35	Interference on forward by defense....	
16	Neutral Zone, encroachment on.....	5 yards		1st down at spot of foul	
17	Player out of bounds.....	5 yards	36	Slugging... Half distance to goal and disqualification	
18	Illegal use of hands and arms by offense.....	15 yards	37	Foul by defense on try for point.... Point awarded	
19	Interference with fair catch, etc.....	15 yards	38	Penalty declined.....	
20	Roughing kickers.....	15 yards			

New York Giants

	FIRST HALF		SECOND HALF	
	1st Quarter	2nd Quarter	3rd Quarter	4th Quarter
Touchdown				
Goal				
Goal (From Field)				
Safety				
Total				

FINAL SCORE NEW YORK GIANTS.....

Stapleton

	FIRST HALF		SECOND HALF	
	1st Quarter	2nd Quarter	3rd Quarter	4th Quarter
Touchdown				
Goal				
Goal (From Field)				
Safety				
Total				

FINAL SCORE STAPLETON.....

SCORING			
TOUCHDOWN.....	6	GOAL (From Field).....	3
GOAL (After Touchdown).....	1	SAFETY.....	2

Histories, New York Giants, 1929

BENNY FRIEDMAN—183—5.10

Former Michigan captain and All-American quarterback. In college also played baseball and basketball. Passes, kicks and runs with equal brilliancy. Rated as greatest star in or out of college. Third season in professional football.

GERALD SNYDER—188—5.8

1929 All-Southern fullback at University of Maryland. In college played football and lacrosse. Line smasher of unusual ability.

“MULE” WILSON—188—5.11

Formerly Texas A. & M. Three years Southwestern halfback. In college was star in football and track. Third year as member of Giants eleven.

F. D. “HAPP” MORAN—187—6.1

Formerly Carnegie Tech. All-Valley honors for halfback. In college starred at football and basketball. Third year in professional football. Specializes running and kicking. Longest kick 68 yards.

JACK HAGERTY—163—5.10

Formerly Georgetown. Mentioned for All-American quarterback honors. In college played football and baseball. Unusual open field runner and pass catcher. Longest run 98 yards. Third year in professional football as member of N. Y. Giants.

E. E. FEATHER—190—6.1

Formerly Kansas State. All Missouri Valley honors for fullback. In college starred at football and baseball. Third year in professional football as running mate for Benny Friedman.

TONY PLANSKY—205—6.2

Former Georgetown star and weight champion. Starred with weights, and in football and basketball. Second year in professional football as member of New York Giants.

LEONARD SEDBROOK—175—5.10

Formerly of Phillips. Star end and in college also played baseball and basketball. First year in professional football.

RAY FLAHERTY—192—5.10

Gonzaga. All-Western end. In college also played basketball and baseball. Last season played professional football with New York Yankees. Great receiver of passes and kicker.

SAUL MEILZINER—250—6.1

Notable linesman last year with Carnegie Tech. Also starred at baseball and basketball. First year in professional football.

DAN M’MULLIN—225—5.7

Star guard with Nebraska last season. Earned All-Western honors. First year in professional football.

JOE WESTOUPAL—200—6.3

Formerly of Nebraska. Star center with particular skill for playing roving style of game. Third year in professional football, previous teams being Kansas City and Detroit.

GEORGE LYON—230—6.2

Formerly Kansas State. Former captain All-State team. In college starred in football and throwing weights. Best shot record 47 feet 6 inches. First year in professional football.

LESTER GAYWOOD—235—6.1

Formerly St. Johns. Star guard. Fourth season in professional football. Previous teams, Buffalo and Detroit.

BOB HOWARD—200—6.0

Formerly Marietta College. Outstanding guard. Fourth year in professional football. Kansas City, Cleveland, Detroit previous teams.

BILL OWEN—200—6.0

Oklahoma A. & M. All-Western tackle in 1925. Fourth year in professional football. Previous teams: Kansas City, Cleveland and Detroit.

CLIFFORD ASHBURN—190—5.11

Formerly Nebraska. Big Six honorary end. In college also starred on track. First year in professional football.

WILBURN CAPPS—235—6.0

Formerly East Central College. All-State tackle four years. Also starred on track. First year in professional football.

GLENN CAMPBELL—184—5.11

Kansas State. All Conference end in 1925. Played basketball three years. First year in professional football.

L. S. MUNN—175—6.0

Formerly Kansas State. All-Missouri end. Starred in baseball and on track. Youngest member of noted football family. Fourth year in professional football. Previous teams: Kansas City, Cleveland and Detroit.

Here Next Sunday

**FAMOUS
PHILADELPHIA YELLOW JACKETS**

With Charley Rodgers

American Legion Championship Pennsylvania Band

~~~~~  
**THE GIANTS HOME GAMES**

SUNDAY, OCT. 13—Stapleton with Ken Strong  
SUNDAY, OCT. 20—Philadelphia Yellow Jackets with Charley Rodgers  
SUNDAY, OCT. 27—Providence Steam Rollers with Gibby Welch  
SUNDAY, NOV. 10—Orange A. C. with George Pease  
SUNDAY, NOV. 17—Chicago Bears with "Red" Grange  
SUNDAY, NOV. 24—Green Bay Packers with Cal Hubbard  
SUNDAY, DEC. 1—Chicago Cardinals with Ernie Nevers  
SUNDAY, DEC. 8—Yellow Jackets

~~~~~  
*On Thanksgiving Day the Giants will play
Stapleton at Staten Island*

It will take a blizzard or a tornado to prevent any of the above games, as the Polo Grounds gridiron is protected with an \$8,000 rain-proof blanket and there are 40,000 covered seats for spectators.



Graduate to
Camels
the
better
cigarette

MADE BY R.J. REYNOLDS TOBACCO CO., WINSTON-SALEM, N.C.



M. B. Brown Printing & Binding Co.,
37-41 Chambers St., N. Y.