

10¢

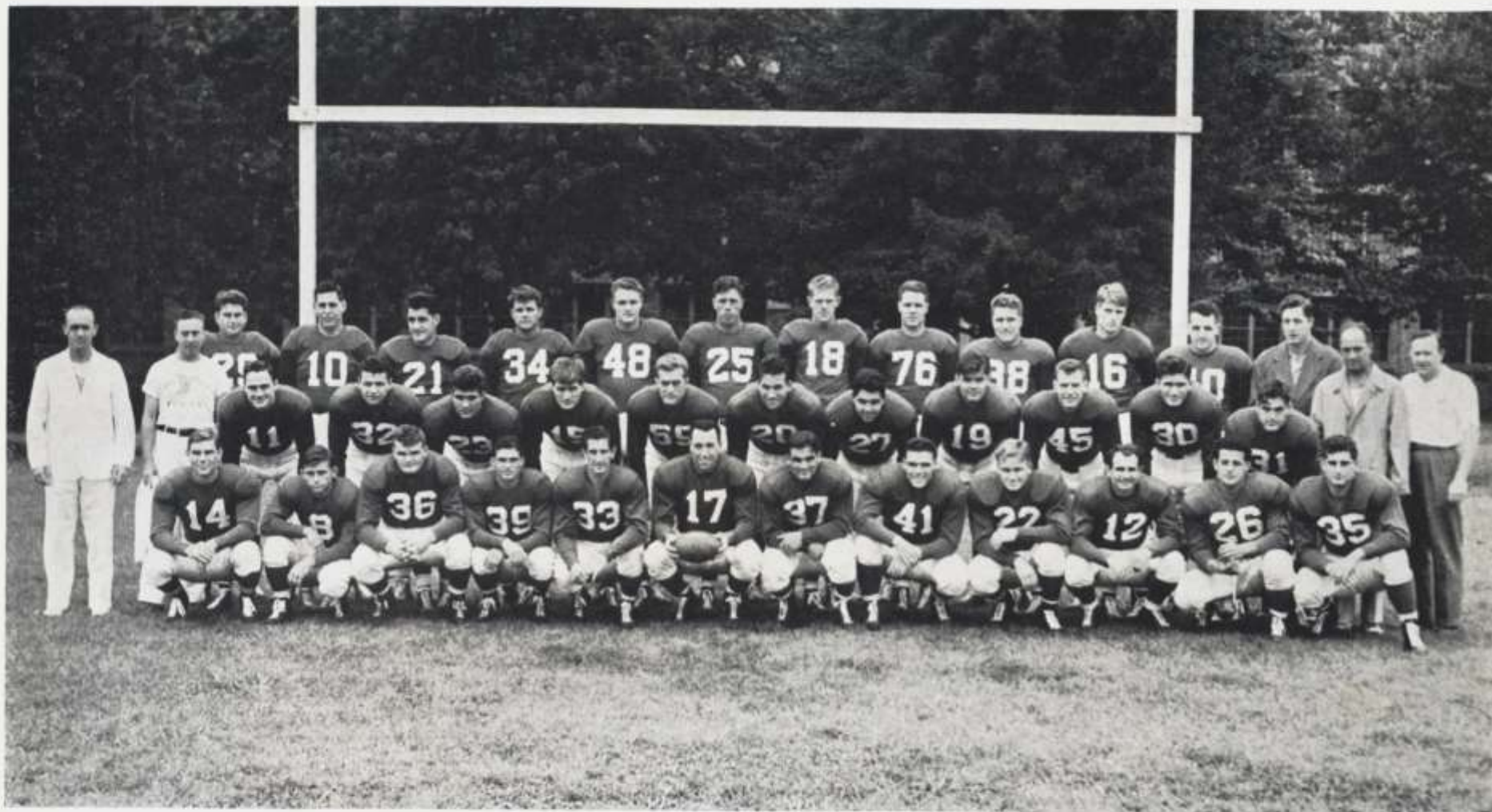


NATIONAL LEAGUE FOOTBALL

Philadelphia Eagles vs New York Giants

Saturday Night Sept 28, 1940

PHILADELPHIA EAGLES



Front Row: Dow, O'Brien, Bukant, Watkins, Manton, Carter, Cole, Schmitt, Jones, Ramsey, diFilippo, Bassi.

Middle Row: Dr. Edward Tibbetts, Trainer Bill O'Neill, Murray, Wolfe, George, Woltman, Wendlick, Hackney, Trost, Somers, Riffle, Watkins, Ginney, Co-Coach Helne Miller, Publicity Director Clair Hare.

Back Row: Hughes, Harper, Cherundolo, Arnold, Schultz, Thompson, Hamilton, McDonald, Corrington, Kolberg, Newton, Co-Coach MacMurdo.

NATIONAL FOOTBALL LEAGUE

CARL L. STORCK, President-Secretary

Vice-President and Treasurer
DENNIS J. SHEA, Brooklyn, N. Y.

Executive Committee

CARL L. STORCK, Chairman, Dayton, O.

BERT BELL, Philadelphia

CHAS. W. BIDWILL, Chicago

L. H. JOANNES, Green Bay

GEORGE PRESTON MARSHALL, Washington

PHILADELPHIA EAGLES PRO FOOTBALL CLUB, Inc.

President, BERT BELL

Program Editor, CLAIR HARE

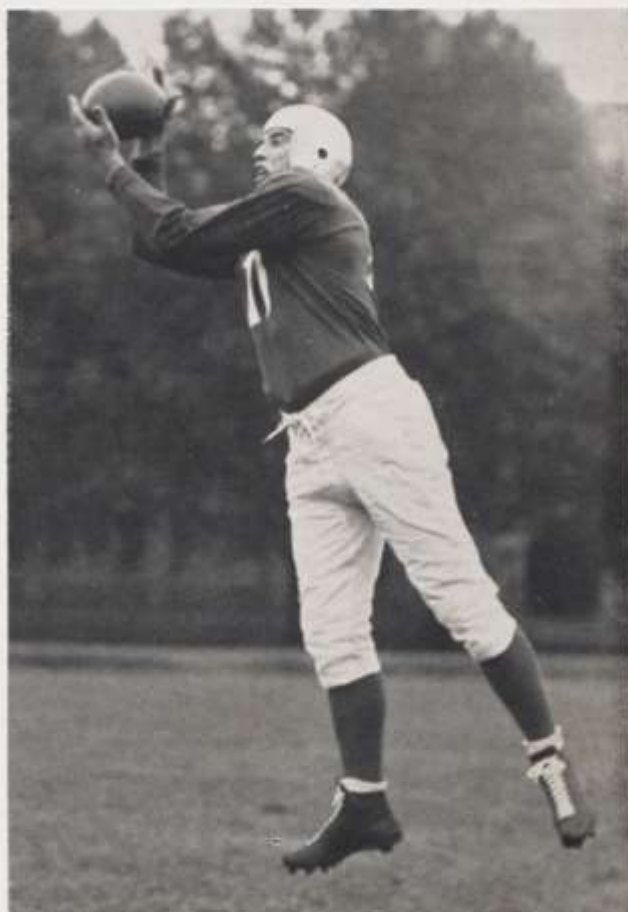
Advertising Representative, DON SPENCER, 271 Madison Ave., New York

FACTS AND FIGURES ABOUT THE 1940 PHILADELPHIA EAGLES

COMPILED BY CLAIR HARE

Davey (Slingshot) O'Brien, 5 feet 7 inches, 151 pounds, quarterback. Age 23. Voted the nation's No. 1 college player of 1938, when Texas Christian took national title. Also member of baseball team (shortstop). In football named All-Southwest Conference 1937 and 1938, All-American almost unanimously in 1938. One of greatest forward passers ever developed, hard and fast runner, surprisingly good blocker, better than average punter. Completed 110 of 194 passes for .568 average in senior year (1938). Only four were intercepted, 20 went for touchdowns. (Sammy Baugh completed 63 of 128 for .492 average with 11 intercepted as Washington Redskins' ace in National League pro games during 1938.) O'Brien set three National League records last season as a rookie with the Eagles. He completed 21 passes in a game against the Chicago Bears, his passes for 11 league games gained 1324 yards, breaking record for 12 games as well as 11. Completed 99 of 201 tries, average .492; 17 intercepted, 6 went for touchdowns. (Parker Hall, Cleveland, completed 106 of 208 for .509 average, gained 1227 yards.) Lightest player in National League, O'Brien was named All-Pro League quarterback. Never injured in nine years of high school, college and pro football. TCU has retired his No. 8 uniform, number never again to be worn by a TCU athlete.

(Continued on page 4)



JOE CARTER, Captain

(Continued from page 3)

Franny Murray, 6 feet, 201 pounds, halfback. Age 24. One of University of Pennsylvania's most outstanding athletes. Three years of stardom in football, basketball and track, captaining both football and basketball teams. Averaged 56 yards punting in one game (Yale), getting off 73-yarder, as junior. In 1936 (senior year) converted 22 of 25 placement tries for extra points, punted 5 straight times from behind goal-line in Princeton game (in last minute final of 4 punts went out-of-bounds on Tiger 11-yard line). Kicked eight straight coffin-corner punts out-of-bounds between 1 and 7-yard lines against Michigan. Coached Penn Charter School in 1937, taught and demonstrated late LeRoy Mills' system of control-kicking in 1938. Last season debut with Eagles. Led team in scoring with 2 touchdowns, 8 extra points, 2 field goals for 26 points (17th in National League scoring). Gained 137 yards, carrying ball 49 times, caught 13 passes to gain 144 yards, averaged 37 yards on 33 punts to be fourth in league.

•

Dick Riffle, 6 feet 1 inch, 197 pounds, fullback. Age 24. One of best small college athletes ever developed. Football, baseball, basketball and track at Albright, captaining both football and track. One of country's leading scorers in 1937, when Albright was undefeated and untied. Named All-Pennsylvania, Little All-American and given big All-American honorable mention. Joined Eagles in 1938. Handicapped by illness, nevertheless, was 20th leading ground gainer in league, 227 yards on 65 attempts for 3.3 yards average. Completed 9 of 31 passes for 178 yards. Last season started slowly, came fast at end. Carried ball 18 times for 61 yards, threw only 4 passes. Tremendously improved this season. One of fastest and most elusive backs on squad; also passer, punter, strong on defense.

•

Chuck Newton, 6 feet, 204 pounds, halfback. Age 23. University of Washington product, selected on All-Pacific Coast second team. Started seven of nine games as sophomore, played 500 of a possible 540 minutes in 1937. Prominent performer in tying California in '37. Started Rose Bowl game and also starred in victory over Southern Cal. Joined Eagles last season. Strong blocker and backerup.

(Continued on page 6)

REMAINING HOME GAMES

OF THE

PHILADELPHIA EAGLES

AT SHIBE PARK

Sunday, October 20—

WASHINGTON REDSKINS, 2.30 P. M.

Saturday, October 26—

BROOKLYN DODGERS, 8.45 P. M.

Sunday, November 17—

DETROIT LIONS, 2.00 P. M.

Sunday, November 24—

PITTSBURGH STEELERS, 2.00 P. M.



FRANNY MURRAY

The Philadelphia Eagles

Drink KNOX GELATINE



ATHLETES in leading universities throughout the country now drink Knox Gelatine *regularly*, because they have found this to be a food that fights fatigue and builds endurance.

TRAINERS of over 200 college athletic teams have found that while Knox can not make a team win, it builds up endurance, helps their men recover more quickly from hard competition.

WHAT CAN KNOX DO for you? Look at these reports of tests made on twenty-three different occupational groups who volunteered to follow the Knox 28-Day Build-Up Plan.

BUSINESS EXECUTIVES, housewives, policemen, models, truck drivers, engineers were included in these tests. From 2 out of 3 who started, and 9 out of 10 who completed the Knox test came the amazing report: *Knox definitely reduces tiredness.*

IF YOU ARE TIRED, perhaps you don't get enough protein in your daily meals. Why don't you try drinking Knox? Knox is all protein. Send for free details on the Knox 28-Day Build-Up Plan.

Knox Gelatine
A Food That Fights Fatigue

TEAR THIS OUT AS A REMINDER

THIS WAY: Empty 1 env. Knox Gelatine in glass $\frac{3}{4}$ full of cold water or fruit juice (or half water, half fruit juice). Let liquid absorb gelatine. Stir briskly, drink rapidly or it will thicken. Take 4 env. a day for 2 weeks, then 2 env. a day. (Before or after meals.) Try it for a month. Notice the difference.

CAUTION: Be sure you use pure, unflavored Knox Gelatine. *Only* Knox was used in the scientific experiments. Ready-flavored gelatine desserts which are about 85% sugar and only about 10% gelatine will not do. *Free Booklet* on energy feeding. Write to Knox Gelatine Co., Johnstown, New York.



(Continued from page 4)

Joe Carter, 6 feet 1 inch, 201 pounds, end. Age 30. Football, basketball and baseball at Austin College, then at Southern Methodist. All-Southwestern Conference in football two years. With Eagles since then entered National League in 1933, only "charter" member of team. Also captain last season. Led team and National League in pass receiving in 1934, sixth in league in 1937, third in 1938 with 27 for 386 yards and 48 points, which made him league's third leading scorer. Last season was sixth best pass receiver in league with 24 passes for 292 yards gained.

●

Herschel (Red) Ramsey, 6 feet, 195 pounds. Age 26. An end, he starred at Texas Tech, where he captained the team in 1937. Selected on Little All-American. Made professional debut with Eagles in 1938. Outstanding rookie from start. Caught five passes to gain 122 yards. Last season was fourth best pass receiver in league, caught 31 for 359 yards (Vic Spadaccini, Cleveland, third in National League standing, caught 32 for 292 yards). Offseason, Red is an oil field worker.

●

Ray George, 6 feet, 220 pounds, tackle. Age 24. Three-sport star in prep school, being named All-State; then three years All-Pacific Coast at Southern California. Played entire sixty minutes against Notre Dame in 1938. With Detroit Lions last season, Rugged Ray played 60-minute games on successive week-ends against Chicago Bears and Green Bay Packers. Eagles got him in deal for Dave Smukler. Considered by many the best 1939 right tackle in the western division of the league. Received 3 votes in the coaches' poll for All-Pro League teams.

●

Jerry Ginney, 5 feet 11 inches, 217 pounds, guard and tackle. Age 24. Santa Clara, graduating 1939, named for All-Coast honorable mention in 1937 and to All-Coast in 1938. Played with New York Giants and Jersey City Giants last season. Offseason occupation, oil refinery worker in California fields.

(Continued on page 10)



DICK RIFFLE



MAURICE HARPER

Let's **TACKLE** Your Clothing Problems

Your goal is to be well dressed and the center of your troubles is to get a suit that will fit you perfectly, assure you a distinctive style, and still stay within your budget.

Here's the end of your clothing problems—a tailored to measure suit from Edward Custom Clothes. Each suit is made to your individual measure, hand cut, hand tailored, and hand fitted to your personal specification.

Wear a suit specially designed to your special designs. Choose from a complete selection of the season's most popular fabrics and enjoy the luxury of clothes made particularly for you.

The Edward Custom Clothes label in your suit is your mark of distinction.

Prices Start at \$29.75

Convenient Budget Plan Available if Desired

EDWARD CUSTOM CLOTHES

SECOND FLOOR — NORTHEAST CORNER 17TH & CHESTNUT

UNDER THE PERSONAL SUPERVISION OF MR. JOHN MONIHAN

PHILADELPHIA EAGLES

1940 OFFICIAL ROSTER

No.	Player	Position	College	Height	Weight
8	DAVEY O'BRIEN	B	Texas Christian	5'7"	151
10	MAURICE HARPER	C	Austin College	6'4"	229
11	FRANNY MURRAY	B	University of Pennsylvania	6'	195
12	HERSCHEL RAMSEY	E	Texas Tech	6'	195
15	CLEM WOLTMAN	T	Purdue	6'1"	227
16	ELMER KOLBERG	B	Oregon State	6'4"	198
17	JOE CARTER	E	Southern Methodist	6'1"	201
19	GEORGE SOMERS	T	LaSalle College	6'2"	260
20	ELMER HACKNEY	B	Kansas State	6'2"	211
21	CHUCK CHERUNDOLO	C	Penn State	6'1"	212
22	DON JONES	B	University of Washington	6'	203
25	RUSS THOMPSON	T	Nebraska	6'5"	250
27	MILT TROST	T	Marquette	6'1"	249
29	BILL HUGHES	G	University of Texas	6'1"	229
30	DON LOONEY	E	Texas Christian	6'2"	190
31	JERRY GINNEY	G	Santa Clara	5'11"	217
33	TILLIE MANTON	B	Texas Christian	6'	180
34	JAY ARNOLD	B	University of Texas	6'	213
35	DICK BASSI	G	Santa Clara	5'11"	215
36	JOE BUKANT	B	Washington U. (St. Louis)	6'	219
37	JOHNNY COLE	B	St. Joseph's	5'9"	195
39	FOSTER WATKINS	B	W. Texas State Teachers	5'10"	160
40	CHUCK NEWTON	B	University of Washington	6'	203
41	TED SCHMITT	T	University of Pittsburgh	5'11"	221
44	FRANK EMMONS	B	University of Oregon	6'1"	213
45	DICK RIFFLE	B	Albright	6'1"	202
48	EBERLE SCHULTZ	G	Oregon State	6'4"	242
59	JOE WENDLICK	E	University of Oregon	6'	208
76	LESTER McDONALD	E	Nebraska	6'4"	206

LONGINES—The World's Most Honored Watch is the Official Watch for All Eagle Games

Here's the **LINEUP** for Fall Clothing Values

LEFT END

Famous Varsity Shop
Hand-made Suits
Starting at **\$35**

LEFT TACKLE

Fashionable, long wearing
Ready-made Suits
Starting at **\$29.75**

LEFT GUARD

Nationally advertised
Dobbs Hat
From **\$5.00**

CENTER

Magregor
Sweaters
From **\$2.50**

RIGHT END

Imported Argyle Hose,
\$2.50
Domestic Hose from **50c**

RIGHT TACKLE

Imported
Holliday & Brown, Ltd.
Neckwear, **\$2.50**
Varsity Shop Ties, **\$1.00**

RIGHT GUARD

Swank jewelry,
Tie clasps and pins
From **50c**

QUARTERBACK

Made-to-measure
Sport coats from **\$18.50**
Ready-made from **\$15.50**

LEFT HALFBACK

Custom-made slacks,
\$8.00
Ready-made, **\$5.50**

RIGHT HALFBACK

Dinner clothes and
Full Dress Suits
From **\$28.50**

FULLBACK

Also shoes,
topcoats, raincoats
and all accessories

THE VARSITY SHOP

3 6 5 7 W O O D L A N D A V E .

On the University of Pennsylvania Campus
Under the Personal Direction of Paul Stofko

(Continued from page 6)

Clem Woltman, 6 feet 1 inch, 227 pounds, tackle. Three years of stardom at Purdue, playing in Chicago All-Star game against Washington Redskins in 1938, after which he joined Eagles. Became first-string player immediately. Speedy and alert, dependable and rugged.

Elmer Kolberg, 6 feet 4 inches, 198 pounds, halfback and end. Football and basketball star at University of Oregon. Played in 1939 East-West game, joining Eagles last season as fullback but being shifted to end because of his height, speed and pass-catching ability. Strong blocker and returns to backfield this season, with possibly a few appearances at end, if necessary.

Lester McDonald, 6 feet 4 inches, 206 pounds, end. Age 25. Rangy Wingman from Nebraska who saw three years' service with Chicago Bears, coming here in trade with Russ Thompson, Dick Bassi and Milt Trost. Hard to fool on defense, dependable receiver of passes. He caught 9 for 175 yards in 1938 and 16 for 261 yards last season with Bears, which featured ground attack, not aerial attack.

Russell Thompson, 6 feet 5 inches, 250 pounds, tackle. Age 25. University of Nebraska, then four years with the Chicago Bears. Came to Eagles with Lester McDonald, end; Dick Bassi, guard; Milt Trost, guard, in deals that sent George McAfee to Bears. Thompson is plenty of man, exceptionally fast for his size, very rugged.

Bill (Hoss) Hughes, 6 feet 1 inch, 229 pounds, guard. Age 25. Three years of football at University of Texas, member of 1934 team that defeated Notre Dame, 7-6. All-Southwest Conference second team center in 1936. Came to Eagles as center in 1937, shifted immediately to guard, has played little at center since because of his value at guard. Hughes was one of outstanding rookies first year, more valuable each succeeding season. Rugged and speedy for his size.

Dick Bassi, 5 feet 11 inches, 215 pounds, guard. Age 24. Played both football and baseball at Santa Clara, joining Chicago Bears in 1938. Intercepted pass and

(Continued on page 12)

NEXT HOME GAME

PHILADELPHIA EAGLES

Little Davey O'Brien

versus

WASHINGTON REDSKINS

Slingin' Sammy Baugh

Sunday, October 20

2.30 P. M.

here at

SHIBE PARK

PRICES: \$1.75 (reserved seats)

\$1.25 (unreserved, \$1.10 bought in advance until
9.00 P. M. Saturday, October 19)

\$0.60 children under 15 (unreserved only)

EAGLES HEADQUARTERS, 3657 Woodland Ave.

EVERgreen 0990

Tickets also at Shibe Park, Gimbel's, Wanamaker's Men's Store, Bond Clothes Shop, 16th & Chestnut; Tendler's Restaurant, 227 So. Broad St.

**THE THORP "DUKE" Official
National League Football**



* **THORP**

SPORTING GOODS • INC.
452 FIFTH AVE • NEW YORK

* *This famous name in Football is now
a famous name in FOOTBALL EQUIPMENT!*

(Continued from page 10)

made long touchdown run against Chicago Cardinals. Eagles got him, along with Thompson, McDonald and Trost in mid-Winter deals.

•

Chuck Cherundolo, 6 feet 1 inch, 212 pounds, center. Age 24. One of best defensive linemen in league. Penn State captain in 1937, starred against Eagles in Philadelphia All-Star game of 1938. Played with Cleveland Rams 1938 and 1939. Was rated third best center in league in 1938, handicapped by injuries last season. Eagles got him in trade for Dick Favor, former Oklahoma back, in mid-Winter trade.

•

Maurice (Moose) Harper, 6 feet 4 inches, 229 pounds, center. Age 26. Austin College (Texas) varsity football 1934-35-36. All-Conference selection two years, unanimous choice in 1936. Professional debut with Eagles in 1937. Rangy and rugged, good passer, strong and alert on defense. Quick to diagnose plays. High school teacher in offseason. High-ranking basketball official, also coach of court team.

•

Eberle Schultz, 6 feet 4 inches, 242 pounds, guard. Age 22. Football for three years, two each of boxing and track at Oregon State. Iron-man of Oregon State grid team last two seasons. Appointed captain one game last season. Named All-Pacific Coast; on Liberty's, N. Y. Sun and Bill Stern's second All-American; Collier's All-Coast and Associated Press' third All-American. State Engineer's office employee in offseason.

•

Johnny (King) Cole, 5 feet 9 inches, 195 pounds, quarterback. Age 24. Rugged and exceptionally speedy, was one of best small-college gridmen ever produced in Philadelphia. Graduated St. Joseph's and member of Eagles in 1938, sent to Wilmington Clippers for pro experience in 1939. Much improved player, both offensively and defensively, this season. Exceptional punter and place-kicker, also power runner, as well as speedy, good passer.

(Continued on page 17)



We are headquarters for

1940 FOOTBALL EQUIPMENT

which embodies the latest scientific improvements in design and construction for player-protection, fast play and smart appearance.

**Also • • EQUIPMENT FOR
COLLEGE SPORTS
OF ALL KINDS**

**FIELD-TESTED
BY GREAT COACHES**

Every major item in our football equipment has been not only laboratory-tested, but field-tested in actual play—under the supervision of five leading University coaches.

**The footballs used in all official games
in the National Professional Football
League are manufactured by Wilson.**

**Horace Partridge Co.
PHILADELPHIA**

THE OFFICIAL WATCH FOR
NATIONAL PROFESSIONAL
FOOTBALL LEAGUE IS

Longines

THE WORLD'S MOST HONORED WATCH



Did you know that...

... the official watch is the most important piece of equipment connected with a football game?

... that it often stops a team, seconds . . . and inches . . . short of a touchdown?

... that it governs how much time may be taken in a huddle?

... that Longines was chosen to time all National Football League games because . . . Longines is official for 104 national and international sports and contest associations and was chosen official watch for the 1940 Olympics?

Longines Watches have won ten world's fair grand prizes, 28 gold medals and more honors for accuracy than any other timepiece. Longines watches priced \$40. upward, and Wittnauer Watches from \$24.75 are sold by Longines-Wittnauer jeweler agencies.

LONGINES-WITTNAUER WATCH CO., INC.
580 Fifth Avenue New York, N. Y.

HOTEL WALTON

BROAD AT LOCUST ST.
PHILADELPHIA

Visit the

WALTON GARDENS RESTAURANT — Lobby Floor

Excellent Cuisine — Moderate Prices

MEN'S BAR & GRILLE — Lobby Floor

Excellent Facilities For

PARTIES

BANQUETS

WEDDINGS

Rooms with tub or shower — \$2.50 up

Pennypacker 7600

Joseph McArdle,
Manager

Do YOU SMOKE THE CIGARETTES

PHILA. EAGLES

LE	LT	LG	C	RG	RT	RE
Looney 30	Thompson 25	Schultz 48	Harper 10	Hughes 29	Trost 27	Carter 17

QB
O'Brien
8

LHB
Bukant
36

RHB
Murray
11

FB
Riffle
45

SQUAD LIST

8 O'Brien, b	19 Somers, t	31 Ginney	40 Newton, b
10 Harper, c	20 Hackney, b	33 Manton, b	41 Schmitt, g
11 Murray, b	21 Cherundolo, c	34 Arnold, b	44 Emmons, b
12 Ramsey, e	25 Thompson, t	35 Bassi, g	45 Riffle, b
15 Woltman, t	27 Trost, t	36 Bukant, b	48 Schultz, g
16 Kolberg, b	29 Hughes, g	37 Cole, b	59 Wendlick, e
17 Carter, e	30 Looney, e	39 Watkins, b	76 McDonald, e

OFFICIALS

Referee..... William T. Halloran, Providence, R. I.
Umpire..... Wilmer G. Crowell, Swarthmore



CIGARETTE THAT

Satisfies

THAT'S COOLER... BETTER-TASTING
DEFINITELY Milder

NEW YORK GIANTS

LE	LT	LG	C	RG	RT	RE
Poole	Cope	Dell Isola	Hein	Tuttle	Dennerlein	Howell
23	36	2	7	42	66	21

QB
Miller
9

LHB
Nielsen
8

RHB
Cuff
14

FB
Falaschi
28

SQUAD LIST

2 Dell Isola, g	12 Eakin, b	23 Poole, e	36 Cope, t
4 Leemans, b	14 Cuff, b	24 Perdue, e	39 Oldershaw, g
5 Lunday, c	15 Soar, b	27 Kline, b	42 Tuttle, g
6 Owen, b	17 McLaughry, b	28 Falaschi, b	50 Widseth, t
7 Hein, c	18 McGee, g	29 Gelatka, e	55 Cole, g
8 Nielsen, b	20 Shaffer, b	31 Harrison, e	60 Edwards, t
9 Miller, b	21 Howell, e	33 Mellus, t	66 Dennerlein, t
11 Principe, b	22 Lansdell, b	35) Moore, g	69 Duggan, t

OFFICIALS

Headlinesman..... Larry Conover, Penn State
Field Judge..... Hinkey Haines, Penn State



For a Day *or* a Longer Stay
HOTEL NORMANDIE

36th and CHESTNUT STREETS

PHILADELPHIA

BARing 4600

FAMOUS FOR GOOD FOOD

**Absolute quietness and rest assured, as no
intoxicating beverages are sold in this hotel.**

Unlimited Parking — Garage Attached

Large and small ball rooms. Complete facilities for business and social functions; teas, bridge parties, dinner and supper dances, banquets and meetings of all sizes. Rates together with all information, including menus, services, etc., given on request. SAMPLE ROOMS AVAILABLE. INSPECTION INVITED.

S. B. DOBBS, General Manager

READY NOW!

A MARVEL TO SHOW...

A MIRACLE TO DEMONSTRATE...

THE DODGE with "FLUID DRIVE," the most vital improvement in motor car operation since hydraulic four-wheel brakes.

THE PLYMOUTH with "POWERMATIC SHIFTING," which vastly reduces shifting effort in normal driving, and creates new stepped-up performance.

NOW ON DISPLAY AT

THORNTON-FULLER COMPANY

"Over 28 Years of Dependable Service"

24th & South Streets
Spr 6730 Race 1590

24
HOUR
SERVICE

441 N. Broad Street
Ste 6300 Race 7110

(Continued from page 12)

Ted Schmitt, 5 feet 11 inches, 221 pounds, guard. Age 23. Varsity letters in boxing and football at Pitt. Recommended to Eagles by Jock Sutherland (then Pitt coach, now Brooklyn Dodgers coach) as best lineman of 1937 team. Played mostly at tackle in college. First-string guard with Eagles immediately upon joining Eagles in 1938.



BILL HUGHES

Milton Trost, 6 feet 5 inches, 249 pounds, tackle and guard. Age 26. Co-captain of Marquette in 1934, followed by four years with Chicago Bears. Eagles got him in trade with Russ Thompson, Dick Bassi and Lester McDonald. Will be used mainly at guard.

Elmer Hackney, 6 feet 2 inches, 211 pounds, fullback. Age 24. Three years of football at Kansas State, similar service with track team, which he captained, and two seasons with the wrestling squad. Given title of "The One-Man Gang." Named All-Big Six fullback, set an American record for the shotput and won the Big Six heavy-weight wrestling title. Handicapped by injuries last football season and didn't finish out campaign. Very fast, can run 100 yards in 10 seconds. Punter, passer and place-kicker as well as plunger and runner. Selected by Eagles in National League annual selective draft.



DICK BASSI

Don Jones, 5 feet 10½ inches, 203 pounds, fullback and halfback. Age 23. Captained the University of Washington last season, when he received All-Pacific Coast honorable mention. Kicked the extra point that defeated Southern California's Rose Bowl champions, 7-6. Strong blocker, backerup, good pass receiver.

Foster (Flippin') Watkins, 5 feet 10 inches, 160 pounds, halfback and quarterback. Age 23. Watkins, at West Texas State Teachers College, was rated second leading passer to Little Davey O'Brien during O'Brien's last season (1938) at TCU. Not much heavier than O'Brien (he probably is second lightest back in the

(Continued on page 22)

1940 Official Schedule of the National Football League

Sunday, September 8
0—Chicago Cardinals at Pittsburgh—0

Sunday, September 15
20—Philadelphia at Green Bay—27
10—New York at Pittsburgh—10
0—Detroit vs. Chicago Cardinals at Buffalo—0
17—Brooklyn at Washington—24

Sunday, September 22
Philadelphia at Cleveland
Chicago Bears at Green Bay
Pittsburgh at Detroit
New York at Washington

Wednesday, September 25 (Night)
Chicago Bears at Chicago Cardinals

Saturday, September 28 (Night)
New York at Philadelphia

Sunday, September 29
Brooklyn at Pittsburgh
Cleveland at Detroit
Chicago Cardinals at Green Bay (Milwaukee)

Friday, October 4 (Night)
Philadelphia at Brooklyn

Sunday, October 6
Washington at Pittsburgh
Chicago Bears at Cleveland
Chicago Cardinals at Detroit

Sunday, October 13
Philadelphia at New York
Detroit at Chicago Bears
Pittsburgh at Brooklyn
Chicago Cardinals at Washington
Cleveland at Green Bay

Sunday, October 20
Washington at Philadelphia
Pittsburgh at New York
Brooklyn at Chicago Bears
Detroit at Green Bay
Chicago Cardinals at Cleveland

Saturday, October 26 (Night)
Brooklyn at Philadelphia

Sunday, October 27
Washington at Detroit
Chicago Bears at New York
Pittsburgh at Green Bay (Milwaukee)
Cleveland at Chicago Cardinals

Sunday, November 3
New York at Brooklyn
Detroit at Cleveland
Green Bay at Chicago Bears
Pittsburgh at Washington

Sunday, November 10
Chicago Bears at Detroit
Philadelphia at Pittsburgh
Green Bay at Chicago Cardinals
Cleveland at New York
Washington at Brooklyn

Sunday, November 17
Green Bay at New York
Detroit at Philadelphia
Chicago Bears at Washington
Cleveland at Brooklyn

Sunday, November 24
Chicago Cardinals at Brooklyn
Washington at New York
Pittsburgh at Philadelphia
Green Bay at Detroit
Cleveland at Chicago Bears

Sunday, December 1
Brooklyn at New York
Chicago Cardinals at Chicago Bears
Philadelphia at Washington
Green Bay at Cleveland

Difference in Rules Between Professional and Collegiate Football

The National Football League Rules Committee has made several changes in the rules for 1940, the most important of which reduces the penalty for clipping from 25 yards to 15 yards. Another important change prevents a team, incurring a penalty, from being penalized more than half the distance to the goal when the penalty is enforced in the field of play.

In professional football, the goal posts are on the goal lines; in collegiate, ten yards back of the goals on the end lines.

In professional football, passes may be thrown from any point behind the line of scrimmage. In collegiate football, they must be thrown from any point at least five yards behind the line of scrimmage.

Professional football does not recognize the "dead ball" rule. In college football if any portion of the ball-carrier's body, excepting his hands or feet, touches the ground the ball is dead at that point. This is not so in professional football.

In professional football the defensive team may recover and advance the ball on fumbles, except where a backward pass has been attempted, or a punt is being received.

Flying blocks and flying tackles are permitted in the professional game.

Professional substitute players may communicate with their team mates immediately upon entering the game. College players must wait one play before communicating.

In professional football the offside penalty on the defense within the ten-yard limit is loss of half the distance to the goal, instead of five yards as in the college game.

In professional football defensive players are permitted wider latitude in the use of open hands on opposing players' necks and head without penalty. This rule prohibits striking but does allow use of hands to force offensive blockers off balance.

In professional football a team is allowed to substitute in the fourth quarter only at the most three players who have previously played in the same quarter. This is not allowed under college rules.

REFRESHMENT Price List

SANDWICHES, ETC.

Cheese	10c
Burk's Ham	10c
Burk's Frankfurters	10c

BEVERAGES

Orange Drink	10c
Penna. Root Beer	10c
Penna. Ginger Ale	10c
Hot Chocolate	10c
Coffee	10c

ARISTOCRAT ICE CREAM

Choco-Pics	10c
Bricks	10c

CONFECTIONS, ETC.

Jumbo Peanuts	10c
Goldenberg's Peanut-Chew	10c
Chewing Gum	5c

CIGARS

Webster Golden Wedding	10c
Bayuk Phillies	5c

CIGARETTES

Chesterfield	20c
Lucky Strikes	20c
Camel	20c
Old Gold	20c

Score Card	10c
Cushion Rental	10c

Quality Printing
at
Quantity Cost

Sixty-eight years of experience and progress has made our list of satisfied customers an enviable one in the industry. Your order, large or small, merits *Lasher* service.

•
**GEORGE F. LASHER
PRINTING CO.**

Since 1872

NOBLE STREET, EAST of BROAD
PHILADELPHIA

AFTER THE GAME



**The
Warwick**
Locust at Seventeenth Street
Philadelphia

Welcome to
Headquarters of

"Pittsburgh Steelers"

of National League Football

**FORT PITT HOTEL
PITTSBURGH**

Room Rates from \$1.50
Double from \$3.00

Special Rates to Football Groups
Write W. E. Morris, Manager

THE COCKTAIL LOUNGE
for Bar-Side Luncheons

DANCING
during the cocktail hour
and at supper

THE EMBASSY ROOM
Luncheon and Dinner

The internationally famous Lamaze
cuisine is featured in both rooms.

Mrs. George Lamaze

Executive Vice President and General Manager

NEW YORK FOOTBALL GIANTS

1940 OFFICIAL ROSTER

<i>No.</i>	<i>Player</i>	<i>Position</i>	<i>College</i>	<i>Height</i>	<i>Weight</i>
2—	*JOHN DELL ISOLA	G	Fordham	5'11"	199
4—	*TUFFY LEEMANS	B	George Washington	6'	195
5—	KAYO LUNDAY	C	Arkansas	6'3"	215
6—	AL OWEN	B	Mercer	6'1"	188
7—	***MEL HEIN (c.)	C	Washington State	6'3"	223
8—	WALT NIELSEN	B	Arizona	6'3"	219
9—	EDDIE MILLER	B	New Mexico State	5'10"	165
12—	KAY EAKIN	B	Arkansas	6'	183
14—	WARD CUFF	B	Marquette	6'1"	185
15—	HANK SOAR	B	Providence	6'2"	207
17—	JOHN McLAUGHRY	B	Brown	6'1"	205
18—	ED McGEE	G	Temple	6'2"	210
20—	LELAND SHAFFER	B	Kansas State	6'2"	202
21—	JIM LEE HOWELL	E	Arkansas	6'5"	201
22—	GRENNY LANSDELL	B	Southern California	6'	190
23—	*JIM POOLE	E	Mississippi	6'2"	217
24—	BOLO PERDUE	E	Duke	5'11"	207
25—	DOMINIC PRINCIPE	B	Fordham	6'	198
27—	JIGGS KLINE	B	Emporia Teachers	6'	195
28—	NELLO FALASCHI	B	Santa Clara	6'	195
29—	CHUCK GELATKA	B	Mississippi State	6'	182
31—	MAX HARRISON	E	Auburn	6'1"	208
33—	JOHN MELLUS	T	Villanova	6'	223
35—	KEN MOORE	G	West Virginia Wesleyan	5'11"	210
36—	FRANK COPE	T	Santa Clara	6'2"	218
39—	DOUG OLDERSHAW	G	Santa Barbara	6'1"	195
42—	**ORVILLE TUTTLE	G	Oklahoma City	5'9"	205
50—	**ED WIDSETH	T	Minnesota	6'1"	220
55—	PETE COLE	G	Trinity (Texas)	5'11"	223
60—	BILL EDWARDS	T	Baylor	6'3"	218
66—	JERRY DENNERLEIN	T	St. Mary's	6'2"	245
69—	CACTUS FACE DUGGAN	T	Oklahoma	6'3"	235

*All-League 1939

**Second All-League 1939

***All-League last seven years

Coach Steve Owen, Phillips U.

Asst. Coach, Bo. Molenda, Mich.

Asst. Coach, Ken Strong, N. Y. U.

Average age—25

Average weight line—212

Average weight backs—196

LONGINES—The World's Most Honored Watch is the Official Watch for All Eagle Games



LESTER McDONALD



FOSTER WATKINS

The Embassy Club

Delightful entertainment with variety and sparkle.
The place where you'll "see" and "be seen."

•

For an exciting or a restful
dinner of incomparable food
and your favorite drinks
served in a gracious setting.

•

THREE SHOWS NIGHTLY

•

1418 SPRUCE STREET

All Eagles' Football Suits Cleaned
BY

SUPREME CLEANERS AND DYERS

PLANT — MAIN OFFICE

4719-21 N. BROAD ST.

Telephone DAV. 7100

Specialists on Cleaning All Athletic
Outerwear

"QUALITY COAL—SATISFACTION GUARANTEED"

VICTOR
COAL & FUELS

OIL BURNERS

FURNACE OIL

KOPPERS COKE

Howard 5500
13th & Washington Avenue
Race 1837

Sagamore 7651
16th and Indiana Avenue
Park 4010

(Continued from page 17)

league), Watkins is a runner and kicker as well as an ace forward passer. Possibly throws faster and longer pass than O'Brien. In college he completed 27 passes in one game. Voted most valuable member of his West Texas State Teachers team the last two seasons. Selected All-Conference both years and named to every All-Opponents' team.

•

Don Looney, 6 feet 2 inches, 190 pounds, end. Age 22. Three years of stardom, both football and baseball, at Texas Christian, captaining baseball team and co-captain of football team. Scored the first touchdown against Fordham in the memorable game of 1937. Talled twice on O'Brien passes in first half of TCU-Temple game in 1938. Eagles picked him in National League's annual selective draft as one of outstanding rookies they wanted for this season.



DON LOONEY

•

Joe Wendlick, 6 feet, 208 pounds, end. Age 24. Starred three years on gridiron at Oregon State, being named to United Press and Associated Press teams of 1938, along with being selected for annual East-West game. Picked by Eagles in 1939 selective draft but worked with U. S. Army Engineers last season, making pro debut with Eagles this season.

•

George Somers, 6 feet 2 inches, 260 pounds, tackle. Age 24. Star at LaSalle College (Philadelphia), where he was captain in 1938 and named to Little All-American team, All-Pennsylvania and All-Philadelphia. Joined Eagles last season, playing most of time as first-stringer. Speedy for such a big man, very strong.

•

Jay Arnold, 6 feet, 213 pounds, halfback. Age 26. Starred for three years at University of Texas, also member of track team. Joined Eagles in 1937, voted most improved player on squad following year. Was thirteenth leading scorer in league. Last season he caught 13 passes

(Continued on page 23)

Keeping up with the sports news
and events of the day is just a
matter of seeing each weekly
program at

TRANS-LUX

THEATRE—1519 Chestnut St.

One hour show, newsreels, sports,
travelogs, cartoons—At all times, 25c.

MEMBER FLORIST TELEGRAPH DELIVERY SERVICE

B. FRANK, Inc.
Florist

ABE POMERANTZ, Mgr.

2 STORES

RITZ-CARLTON HOTEL
KINGSLEY 1426
33 SOUTH 13th STREET
RITTENHOUSE 2658

(Continued from page 22)

to gain 207 yards. Carried ball from scrimmage only eight times.

Joe (Buckin') Bukant, 5 feet 11½ inches, 219 pounds, halfback and fullback. Age 24. Three seasons of football, two of track and one of basketball at Washington University (St. Louis). Twice given All-America honorable mention, twice named All-Missouri Valley Conference, as well as All-Missouri State. Joined Eagles in 1938. Gained 119 yards, carrying ball 48 times, last season gained 136 yards on 59 tries. Powerful plunger and blocker, rugged on defense.

Taldon (Tillie) Manton, 6 feet, 180 pounds, fullback and halfback. Age 27. Another Texas Christian product, Tillie is one of the most accurate place-kickers the game has ever known. Climaxed glorious college career by kicking 36-yard field goal from sea of mud to give TCU 3 to 2 victory in 1936 Sugar Bowl game. Also a stellar baseball player. Gave up diamond sport when he felt he couldn't make grade as big leaguer. Member of New York Giants in 1936 and 1937, Washington Redskins in 1938. During entire professional career has missed only one attempt at converting extra point try and that was blocked when line failed to hold. Converted 42 consecutive tries for extra points. Registered 58 points without scoring one touchdown for Los Angeles Bulldogs last season. Manton scored in all 13 games, 12 of which were won. In three games he kicked three field goals and in two others kicked two field goals. Two field goals were from midfield (50-yard kicks) and both won games for Los Angeles.

Frank Emmons, 6 feet 1 inch, 213 pounds, halfback, fullback. Age 22. Three years football, two of track at the University of Oregon. Selected for East-West game, in which Texans gave him nickname of "Hoss" because of propensity for work. Eagles picked him in National League annual selective draft, but fans also voted him

(Continued on page 26)

After the Game JOIN the HUDDLE



at

BOOKBINDERS

SEAFOOD HOUSE, INC.

215 So. 15th. St.

"Tackle" a delicious lobster or steak dinner served by the renowned Bookbinders. Famous for superb seafood, steaks, and chops. Moderately-priced luncheons to full-course dinners.

OPEN 'TILL MIDNIGHT

Not connected with any other Restaurant



UNIFORMS

The Philadelphia Eagles
FOOTBALL TEAM IS EQUIPPED BY
MITCHELL & NESS

Philadelphia's Most Modern
Sporting Goods Store

ATHLETIC GOODS

1209 ARCH STREET

[PHILA., PA.]

It is another "feather in our cap" to have
outfitted such a splendid team
as the Eagles



WENDLICK



WOLTMAN



LOONEY



BUKANT



ARNOLD



HARPER



MURRAY



NEWTON



TROST



SOMERS



CHERUNDOLO



SCHULTZ



THOMPSON



KOLBERG

PHILA.



COLE



RAMSAY



BASSI



MANTON



CARTER



RIFFLE



McDONALD



O'BRIEN



HUGHES



SCHMITT



JONES



WATKINS



HACKNEY

EAGLES

(Continued from page 23)

into annual Chicago All-Star game of August, 1940. Critics named him second best gridman on team which lost thriller to Green Bay Packers. Emmons, as blocker and backerup of line, played 54 minutes. Packers gained very little on ground plays, won through sensational air attack. Can also place-kick and pass, is hard runner and plunger.

Looney Leads Pass Receivers

Eastern division players dominate the National Football League race for individual honors in the play to date. Don Looney, Philadelphia Eagles rookie end from Texas Christian, showed that he is no flash in the pan when he widened his lead over Don Hutson in pass receiving and also forged ahead as the leading scorer.

The individual championship race, exceedingly close in all departments, has thrilled 192,000 spectators in the first nine games, an increase of 22,000 for the same number of games a year ago, an average increase of 2,400 a game.

A National League record was tied for the second successive week. Johnny Drake, Cleveland, tallied three touchdowns Sunday to tie the mark previously accomplished by fifteen other players in league history. Last week Looney tied the record for eight pass receptions in one game.

Looney has caught 15 passes for 296 yards compared with 7 receptions for 118 yards for Don Hutson, league leader thrice in the last five years. Looney needs now to average only three catches a game in his remaining nine games to surpass the league standard of 41 held by Hutson and Gaynell Tinsley, Chicago Cardinals. As an illustration of the early advantage held by Looney, it can be pointed out that Hutson didn't have fifteen receptions until his sixth game and Tinsley didn't have fifteen until his fourth game the years they caught 41 for the league record.

Looney has tallied four touchdowns for 24 points, leading Drake, who has 18 points, for scoring honors. Tuffy Leemans, New York Giants' league champion ground gainer in 1936, is off to a good start with 131 yards. Merlyn Condit, Pittsburgh rookie from Carnegie Tech, is second with 109 yards. Billy Patterson, Pittsburgh, has 99 and Clarke Hinkle, Green Bay, 91 yards.

Sammy Baugh, Washington, continues to pace the forward passing race with 19 completions out of 28 tosses for an efficiency average of 67%. Davy O'Brien with 26 out of 58 and Parker Hall with 9 out of 17 are tied for second. League standings are based on rating by completions and efficiency. O'Brien has 44% efficiency, sixth in the league, compared with 52% for Hall, third in the league.

WHERE TO
GO . . . *for*
fine liquors and
excellent food

LEW TENDLER'S
RESTAURANT
OF COURSE
THE MEETING PLACE
FOR
Sportsmen and Connoisseurs of Cuisine

Special Sunday Dinners
227 SOUTH BROAD STREET

"THE FOOD IS SUPERLATIVE"

---Jeff Keen, Daily News

and so is

WINE WOMAN and SONG

A Musical Revue Featuring
THE OXFORD BOYS PATRICIA KING
BOB RUSSELL DORA MAUGHAN
PAUL SYDELL & SPOTTY
AND A CAST OF 70 INCLUDING
AMERICA'S LOVELIEST GIRLS

WITH
NEIL FONTAINE
AND HIS ORCHESTRA
AUGUSTO SANABIA
AND HIS RUMBA BAND

Featuring
FELICIA

VINCENT RIZZO
AND HIS TROPICAL ISLANDERS
CHEENA DI SIMONE
AND HER LATIN AMERICAN DANCERS
Never a Cover Charge
FOR RESERVATIONS PHONE PEN. 7600

 *Jack Lynch*
ATOP THE HOTEL WALTON

THE JOHN WANAMAKER MEN'S STORE

Our fine Tweed Suits

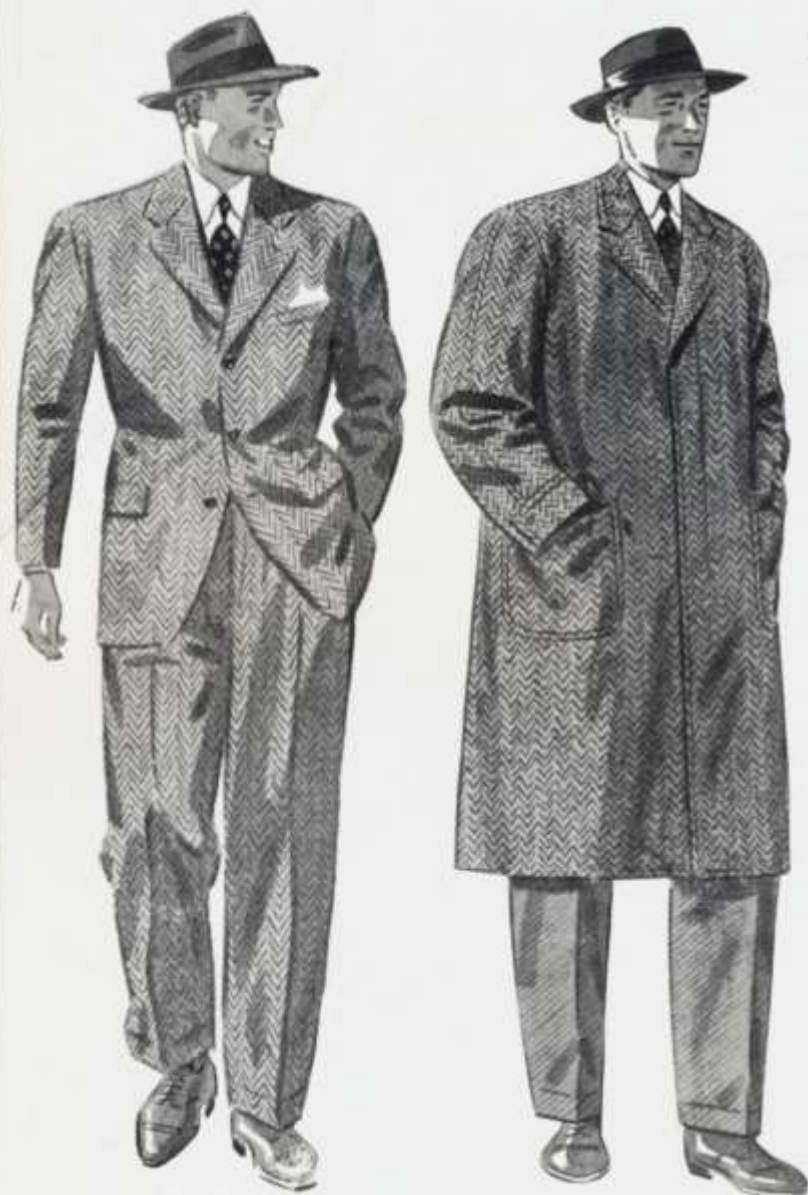
and Topcoats

score the winning points

\$30

Men's store tweeds win on quality, styling, variety and value. At \$30 we've one of the largest collections of finer tweeds ever. Suits and coats selected, styled, tailored by experts. The tweed team sketched scores in every quarter—from smooth well set shoulders to the last buttonhole.

THE MEN'S STORE, FOURTH FLOOR



The Suit . . . rich colorful tweed from the Scotch border country. Made with longer coat, 3 button, single breasted; more natural shoulders. Blues, greys, browns.

The Topcoat . . . fly front and set-in sleeves—tailored for town wear—of superior domestic tweed in handsome herringbone pattern. Blues, greys, browns.

John Wanamaker

PHILADELPHIA



THRILLS . . . action . . . excitement
— we hope you have them here
at the game.

When you can't watch the Eagles
— listen. Atlantic makes available
for your pleasure play-by-play
broadcasts of the Philadelphia
Eagles' games. In addition, Atlan-
tic is again bringing you broad-

casts of college football. 191 games.
112 colleges. 78 stations.

Get Dick Dunkel's famous fore-
cast sheet (out each Wednesday)
and your 1940 Football Guide at
your Atlantic Dealer's. And while
you're there, fill up with Atlantic
White Flash PLUS — the *proved*
gasoline.

PHILA. EAGLES' GAMES BROUGHT YOU BY ATLANTIC OVER WFIL

†Sunday, Sept. 22 Cleveland
*Saturday, Sept. 28 New York
*†Friday, Oct. 4 Brooklyn
†Sunday, Oct. 13 New York
Sunday, Oct. 20 Washington

*Saturday, Oct. 26 Brooklyn
†Sunday, Nov. 10 Pittsburgh
Sunday, Nov. 17 Detroit
Sunday, Nov. 24 Pittsburgh
†Sunday, Dec. 1 Washington

COLLEGE GAMES BROUGHT YOU BY ATLANTIC

SEPTEMBER 27

*Temple-Muhlenberg WIP

OCTOBER 4

*Temple-Georgetown WIP

OCTOBER 5

Pennsylvania-Maryland WCAU

*Villanova-P. M. C. WIP

OCTOBER 11

*Villanova-Florida WIP

OCTOBER 12

Pennsylvania-Yale WCAU

Temple-Boston College WFIL

OCTOBER 18

*Temple-Michigan State WIP

OCTOBER 19

Pennsylvania-Princeton WCAU

Villanova-Baylor WFIL

OCTOBER 26

Pennsylvania-Michigan WCAU

Temple-Penn State WFIL

*Night game †Away

OCTOBER 27

Villanova-Detroit WIP

NOVEMBER 1

*Villanova-Kansas WIP

NOVEMBER 2

Pennsylvania-Navy WCAU

Temple-Bucknell WFIL

NOVEMBER 9

Pennsylvania-Harvard WCAU

Temple-Villanova WIP

NOVEMBER 16

Pennsylvania-Army WCAU

Temple-Holy Cross WIP

Villanova-Manhattan WFIL

NOVEMBER 23

Pennsylvania-Cornell WCAU

Temple-Oklahoma WFIL

Villanova-Duquesne WIP

DECEMBER 7

Villanova-Auburn WFIL

THE ATLANTIC REFINING COMPANY

Petroleum Products