

OFFICIAL PROGRAM ★ TWENTY-FIVE CENTS



GRID REVIEW

PHILADELPHIA

EAGLES vs.

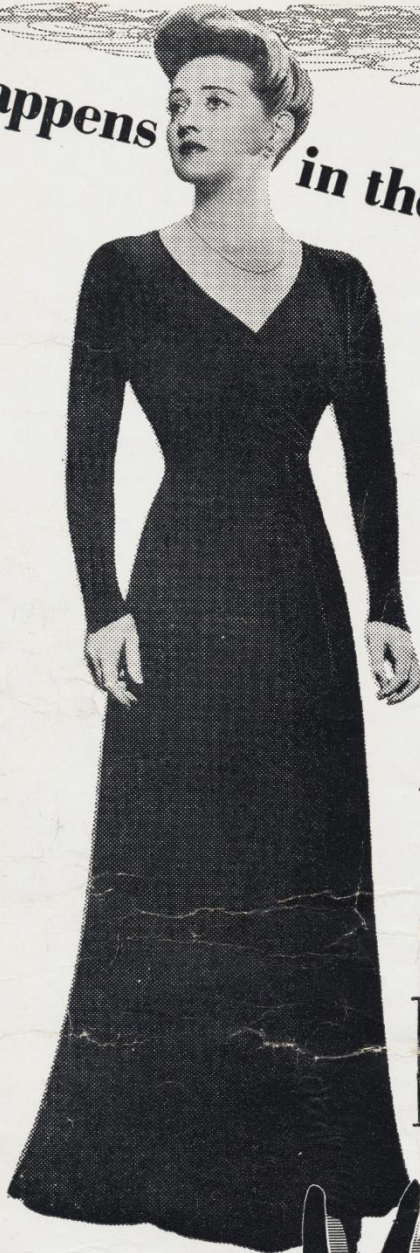
NEW YORK

GIANTS

November 8, 1942

Philadelphia, Pa.

it happens in the best of families...



and
this
is the
way
it
happens!



WARNER BROS. TRIUMPH
BETTE DAVIS

more radiant, more exciting
than ever—in love with

PAUL HENREID

who matches her every emotion, in

"Now, Voyager"

Another best seller from the
author of 'Stella Dallas'—
another great role for Bette!

with **CLAUDE RAINS** ★ **A HAL B. WALLIS PRODUCTION** ★

GLADYS COOPER • BONITA GRANVILLE • ILKA CHASE • Directed by IRVING RAPPER
Screen Play by Casey Robinson • From the Novel by Olive Higgins Prouty • Music by Max Steiner

★ **BUY WAR BONDS AT THIS THEATRE** ★
AS A SALUTE TO YOUR HEROES! ★

Now Playing
MASTBAUM THEATRE 20th and Market Streets

A MESSAGE FOR THE FANS

This, ladies and gentlemen, is your page . . . so read the contents carefully. It may mean money in your pocket in the form of a beautiful and practical gift.

Today—at halftime—the following awards will be made to the holders of the lucky number programs announced over the public address system: (1) An ANDESIAN OVERCOAT; (2) a BRENTWOOD SWEATER; (3) an EVERSARP PEN AND PENCIL SET; (4) three pairs of tickets (six in all) for the next EAGLES' home game.

Here's what you do to win . . . Look at the lucky number printed on this page. Listen carefully to the announcement over the public address system between the halves, when the winning numbers will be announced. If you have one of the lucky number programs, go to the Shibe Park office immediately and receive your prize.



● FIRST PRIZE

An ANDESIAN OVERCOAT. This coat retails for \$42.50 and is made by the leading manufacturer of men's overcoats in America. It is presented through the courtesy of S. GERSON, CLOTHIER, 6TH AND BAINBRIDGE STREETS.



● SECOND PRIZE

A BRENTWOOD SWEATER. This fine sweater, made by America's leading manufacturer of fine men's sportswear, will be envied by every man. Retail for \$7.50.

Brentwood

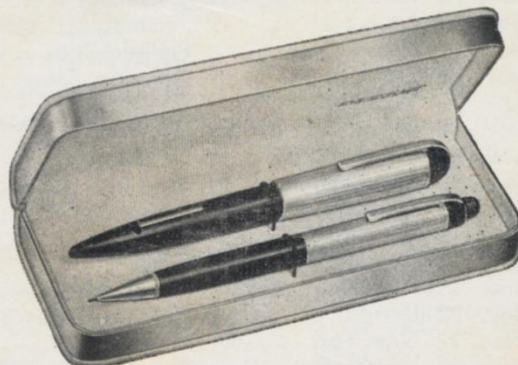


● FOURTH, FIFTH, and SIXTH PRIZES

Two tickets to the next EAGLES' home game. Reserved seats in the upper stands right on the 50-yard line. Value, \$4.50 per pair.

● THIRD PRIZE

An EVERSARP PEN AND PENCIL SET. Who wouldn't prize this beautiful set. Presented through the courtesy of Barr's—Jewelers and Silver-smiths, located at 1112 Chestnut St., 5600 Germantown Ave., 4650 Frankford Ave., 28 South 69th St.



EVERYONE BUYING A PROGRAM HAS AN EQUAL CHANCE TO WIN ONE OF THE ABOVE PRIZES

LUCKY NUMBER

Nº 11778

COMPLETE NATIONAL FOOTBALL LEAGUE SCHEDULE 1942

The official football timing watch for PHILADELPHIA EAGLES

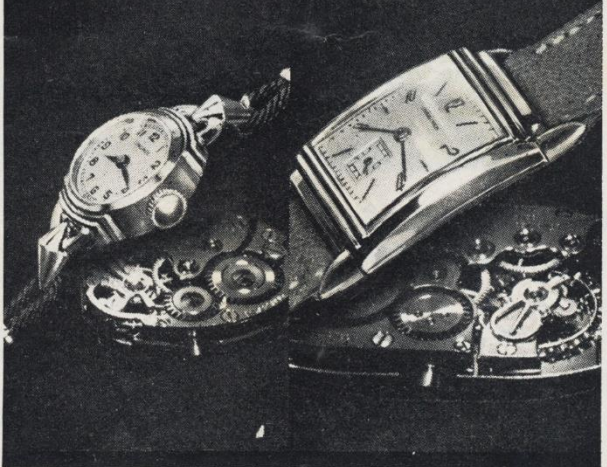
Longines THE WORLD'S MOST HONORED WATCH

Date	Home Club	Visitors	Results
Sept. 13	Pittsburgh	vs Philadelphia	14-24
Sept. 13	Chicago Cards	vs Cleveland	7-0
Sept. 20	Chicago Cards	vs Detroit	13-0
Sept. 20	Cleveland	vs Philadelphia	24-14
Sept. 20	Washington	vs Pittsburgh	28-14
Sept. 27	Green Bay	vs Chicago Bears	28-44
Sept. 27	Pittsburgh	vs Chicago Cards	Postponed
Sept. 27	Detroit	vs Cleveland	0-14
Sept. 27	Washington	vs New York	7-14
Sept. 27	Philadelphia	vs Brooklyn	14-35
Oct. 4	Cleveland	vs Chicago Bears	7-21
Oct. 4	Chicago Cards	vs Green Bay	13-17
Oct. 4	Detroit	vs Brooklyn	7-28
Oct. 4	Pittsburgh	vs New York	13-10
Oct. 4	Philadelphia	vs Washington	10-14
Oct. 11	Chicago Bears	vs Chicago Cards	41-14
Oct. 11	Green Bay	vs Detroit	38-7
Oct. 11	Washington	vs Cleveland	33-14
Oct. 11	New York	vs Philadelphia	35-17
Oct. 11	Brooklyn	vs Pittsburgh	0-7
Oct. 18	Chicago Bears	vs New York	26-7
Oct. 18	Detroit	vs Chicago	0-7
Oct. 18	Green Bay	vs Cleveland	45-28
Oct. 18	Brooklyn	vs Washington	10-21
Oct. 18	Philadelphia	vs Pittsburgh	0-14
Oct. 25	Chicago Bears	vs Philadelphia	45-14
Oct. 25	Cleveland	vs Chicago Cards	7-3
Oct. 25	Detroit	vs Green Bay	7-28
Oct. 25	Brooklyn	vs New York	17-7
Oct. 25	Pittsburgh	vs Washington	0-14
Nov. 1	Chicago Bears	vs Detroit	16-0
Nov. 1	Green Bay	vs Chicago	55-24
Nov. 1	Brooklyn	vs Cleveland	0-17
Nov. 1	New York	vs Pittsburgh	9-17
Nov. 1	Washington	vs Philadelphia	30-27
Nov. 8	Brooklyn	vs Chicago Bears	
Nov. 8	Washington	vs Chicago Cards	
Nov. 8	Cleveland	vs Green Bay	
Nov. 8	Detroit	vs Pittsburgh	
Nov. 8	Philadelphia	vs New York	
Nov. 15	Chicago Bears	vs Green Bay	
Nov. 15	Cleveland	vs Detroit	
Nov. 15	New York	vs Washington	
Nov. 15	Brooklyn	vs Philadelphia	
Nov. 22	Detroit	vs Chicago Bears	
Nov. 22	New York	vs Green Bay	
Nov. 22	Washington	vs Brooklyn	
Nov. 29	Chicago Bears	vs Cleveland	
Nov. 29	New York	vs Chicago Cards	
Nov. 29	Philadelphia	vs Green Bay	
Nov. 29	Detroit	vs Washington	
Nov. 29	Pittsburgh	vs Brooklyn	
Dec. 6	Chicago Cards	vs Chicago Bears	
Dec. 6	Green Bay	vs Pittsburgh	
Dec. 6	New York	vs Brooklyn	

Longines, official football timing watch for this game, is the sports world's most honored watch. For many years Longines Watches have timed the principal championship football, track, basketball, swimming, auto racing, aviation, ski, bobsledding, rodeo, and other sports events. For the 1940 Olympics Longines was selected as exclusive official watch; an honor which was repeated by the Organization Committee for the first Pan-American Sporting Games.

Other Longines honors include 10 world's fair grand prizes, 28 gold medals, and more acknowledgments of accuracy than have been won by any other timepiece. Throughout the world, no other name on a watch means so much as Longines, the world's most honored watch.

*The beating heart of every Longines Watch
the Longines Observatory Movement**



The skill, experience, and workmanship necessary for the construction of Longines Watches for precision timing, aviation, and navigation, are reflected in the greater accuracy of every Longines Watch at any price. And every Longines Watch contains the Longines "Observatory Movement*" world-honored for greater accuracy and long life. Longines jewelers also sell the Wittnauer Watch, a companion line of moderate price, product of—
Longines-Wittnauer Watch Company, 580 Fifth Avenue, New York, N. Y.

*REG. U. S. PAT. OFF.



EAGLES GRID REVIEW

Official publication of The Philadelphia Eagles.
Published for, and on sale at all home games.

Published by East-West Sporting Club, Inc., 22 South 17th St., Philadelphia, Pa.

Alexis Thompson	President	John Kellison	Line Coach
Harry M. Thayer	Sec'y and Gen. Mgr.	Frederick Beale	Club Doctor
Hugh Turner	Ass't Mgr.	Bill O'Neill	Trainer
Al Ennis	Publicity Director	Fred Schubach	Equip. Mgr.
A. Earle Neale	Head Coach		

Victor Kirsh, Eagles Grid Review Director

Represented for National Advertising by Don Spencer Co., 271 Madison Ave., New York City

ATTENTION - GRANDSTAND QUARTERBACKS

Show your knowledge of football and see the Green Bay Packers game as the guest of the Philadelphia Eagles.

Here is your chance to run a big league



Below are three quarterback problems which Coach "Greasy" Neale invites you to solve. These are not "trick" questions, but the sort of problems which might confront any quarterback at any time in any game.

Answer each problem separately. Tell Coach Neale what play you would select for each situation, and state briefly why you have selected that play.

Print your name and address plainly, and send your answers to

The Philadelphia Eagles
22 South 17th Street
Philadelphia, Pa.

To receive consideration, all answers must be mailed before midnight, Thursday, November 12th, 1942.

Coach Neale will be the judge of all answers submitted. To those three persons who, in his opinion, submit the best set of answers, we will mail two reserved seat tickets to the game on November 29th between the Eagles and the Green Bay Packers.

Problem 1. The ball is in your possession on your opponents' 30 yard line. It is 2nd down and 1 yard to go. Would you use an (a) an End Run, (b) an Off Tackle play, or (c) a Pass? Why?

Problem 2. The ball is in your possession on your opponents' 18 yard line. You

football team and at the same time win a pair of reserved seats for the big game at Shibe Park on November 29th between the Philadelphia Eagles and the Green Bay Packers.

have advanced to this point by means of off-tackle and quick-opening plays, and 3 short passes. It is 3rd down and 3 yards to go. What play would you use? Why?

Problem 3. The ball is in your possession on your opponents' 2 foot line. On second down you tried a quarterback sneak and were thrown for a 2 yard loss. It is now third down and a little over two yards to go for a touchdown. What play would you use? Why?

There have been times when, watching the game from the grandstand, you were sure the quarterback had called the wrong play. And you were just as sure that, had you been in his place, you would have called the **right play**.

Well—here's your chance. Coach "Greasy" Neale has just called you from the bench, and said, "Get in there, Joe, and get us that touchdown", and with the coach's words ringing in your ears, you run out on the field. Now you are in the huddle. Your teammates surround you. **THEY WANT THAT TOUCHDOWN — AND THEY'RE WAITING FOR YOU TO SHOW THEM HOW TO GET IT.**

IT'S UP TO YOU NOW. Remember—you're allowed only 30 seconds in that huddle. **SO THINK HARD—AND THINK FAST.**

**TAKE IT AWAY
GRANDSTAND QUARTERBACKS**

PHILADELPHIA ATHLETICS EASTERN CHAMPIONS — 1902



Back Row:- left to right; Howley Pierce, tackle; Len Sweet, center; Earl Hewitt, quarterback; Eddie Wood, End; Dave Cure, Fullback; John Shibe, Secretary; Curley Davidson, Fullback; Schaefer, Tackle

Middle Row:- left to right; Thompson, End; Ed Bader, Halfback; Edgar Wallace, Tackle and Captain; Connie Mack, Manager; Tiger McFarland, Guard; Kingdin, Guard

Front Row:- left to right; Peter, Halfback and Coach; Ed Weir, End; Smith, Center; Steinberg, Halfback; John Dugan, Halfback; Mike Merriam, End

1902—Connie Mack organized Philadelphia Athletics with Rube Waddell in lineup, and claimed professional football championship of the United States after defeating Pittsburgh, with Christy Mathewson at full back, 12 to 6. (Nov. 26).

First night football game, Philadelphia Athletics, (39), vs. Kanaweola A. C. (0), at Elmira, N. Y. (Nov. 18).

GAME OFFICIALS

This year all officials working the National Football League games will have numbers which will remain the same through the season. No club knows who the officials are to be until the day of the game. The following are the National Football League officials and their respective numbers:

REFEREES	UMPIRES	FIELD JUDGES	HEAD LINESMEN
Bobie Cahn 3	Carl Brubaker . . . 14	William Downes . . 25	Charlie F. Berry . . 31
Ronald J. Gibbs . . 5	John B. Kelly . . . 18	William Grimberg . 27	Earl Cavanaugh . . 30
E. F. T. Hughitt . . 7	Leo V. Novak . . . 17	Eugene E. Miller . . 26	Larry Conover . . . 34
Carl K. Rebele . . . 8	Harry D. Robb . . . 15	Charles Sweeney . . 22	Louis J. Gordon . . 35
Samuel A. Weiss . . 2	John J. Schommer . 12	Ralph Vince 29	Joseph J. Lipp . . . 33

● YOU'LL LOOK BETTER IN A BRENTWOOD SWEATER ●

NATIONAL FOOTBALL LEAGUE STANDINGS - 1942

Eastern Division

Western Division

	W.	L.	P.C.	Pts.	O.P.		W.	L.	P.C.	Pts.	O.P.
Washington	6	1	.857	147	89	Chicago Bears	6	0	1000	193	10
Pittsburgh	4	3	.571	79	85	Green Bay	5	1	.833	211	99
Brooklyn	3	3	.500	90	73	Cleveland	4	4	.500	111	123
New York	2	4	.333	82	97	Chicago Cards	3	4	.429	81	120
Eagles	1	7	.125	120	211	Detroit	0	7	.000	21	144

PAST LEAGUE CHAMPIONS

1941	Chicago Bears	New York beaten in play-off	37-9
1940	Chicago Bears	Washington beaten in play-off	73-0
1939	Green Bay	New York beaten in play-off	27-0
1938	New York	Green Bay beaten in play-off	23-17
1937	Washington	Chicago Bears beaten in play-off	28-21
1936	Green Bay	Boston beaten in play-off	21-6
1935	Detroit	New York beaten in play-off	26-7
1934	New York	Chicago Bears beaten in play-off	30-13
1933	Chicago Bears	New York beaten in play-off	23-21

HOME OF THE PHILA. EAGLES

HOTEL PHILADELPHIAN

39th and CHESTNUT STREETS

Desirable rooms and suites, furnished or unfurnished, with complete hotel service, invite your inspection at Hotel Philadelphian's desirable address and location. Recently refurnished and redecorated, with a radio in every room. The complete facilities of this famous hotel are at the service of every guest.

DANIEL CRAWFORD, JR.
Pres. and Gen. Mgr.

Cocktail Bar — Coffee Shop — Dining Room

Unrestricted Day and Evening Parking

● YOU'LL LOOK BETTER IN A BRENTWOOD SWEATER ●

EAGLES



ED CONTI
Guard

"GREASY" NEALE
Head Coach

BOB WEAR
Center

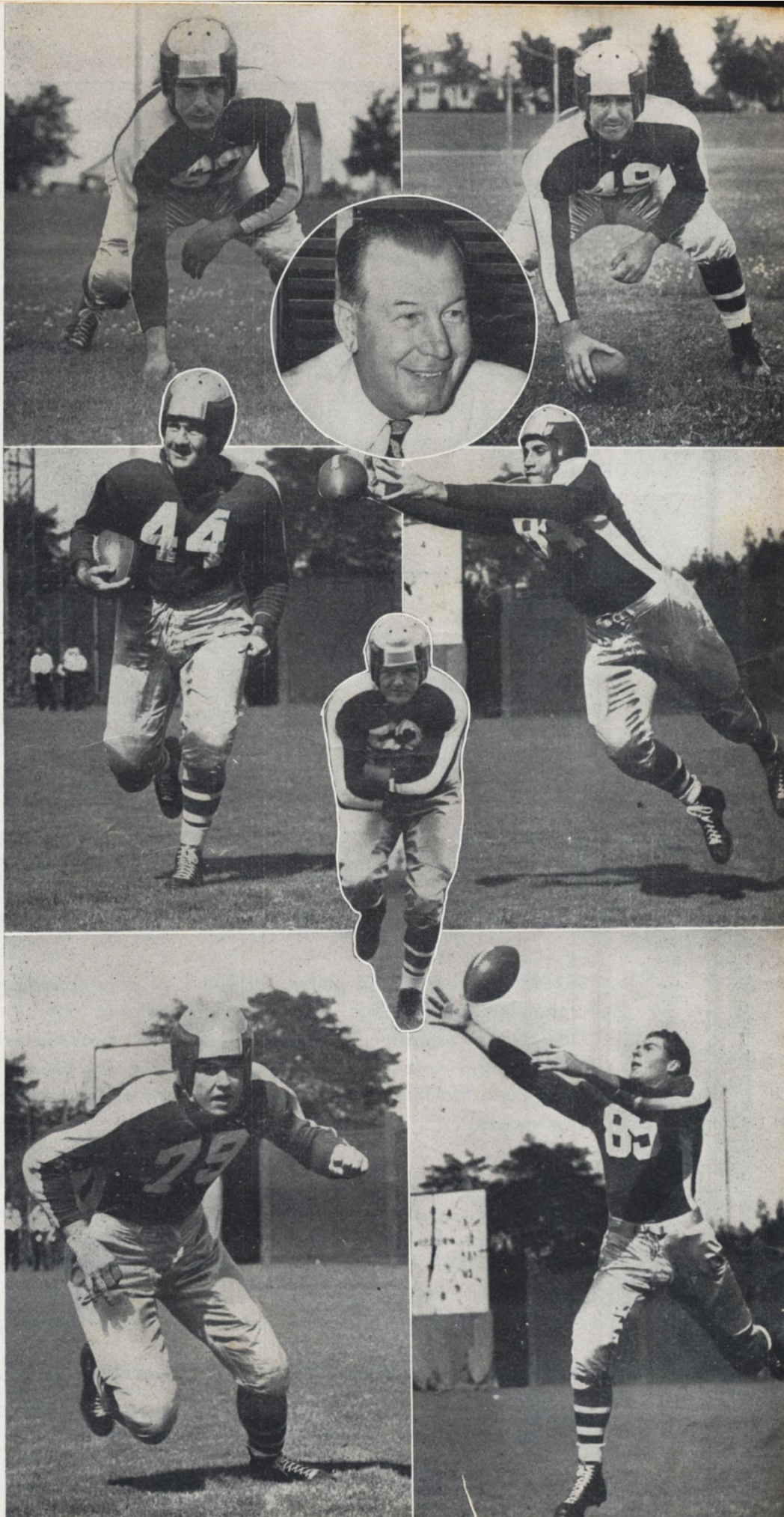
BURT JOHNSON
Back

TED WILLIAMS
Back

LARRY CABRELLI
End

VIC SEARS
Tackle

FRED MEYER
End



EAGLES



LOU TOMASETTI
Back

BILL HALVERSON
Tackle

JACK STACKPOOL
Back

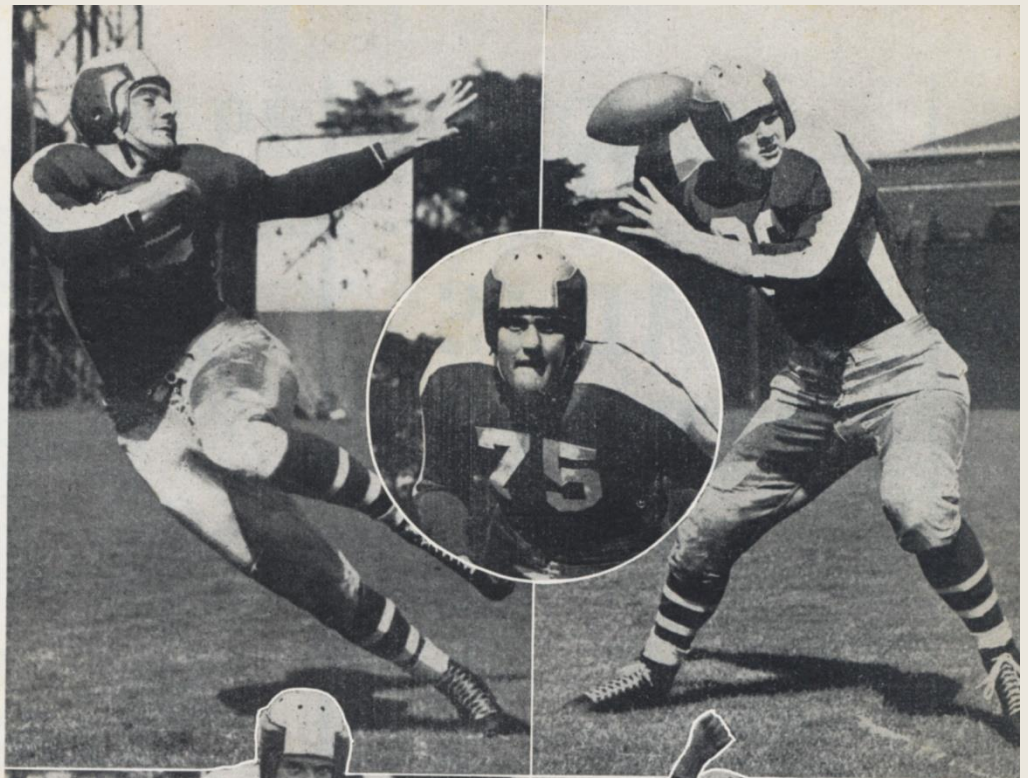
RAY GRAVES
Center

LEN BARNUM
Back

BERNIE KAPLAN
Guard

FRANK HRABETIN
Tackle

DICK ERLITZ
Back



★ **OUR
GOAL IS
ALWAYS
QUALITY**

BARR'S has won and held the confidence of Philadelphia . . . for nearly a century . . . because we have always made Quality our first goal. Choose pure-white diamond rings . . . fine jewelry . . . nationally-renowned watches at Barr's, with the utter confidence that you are receiving proved merit and outstanding value . . . no matter what the price! You're invited to open an account.

**CONVENIENT TERMS
WEEKLY OR MONTHLY**

FOUR STORES TO SERVE YOU

ESTABLISHED 1853
BARR'S
JEWELERS • SILVERSMITHS

1112 CHESTNUT STREET
28 SOUTH 69TH STREET
5600 GERMANTOWN AVE.
4650 FRANKFORD AVENUE

*Out of Town Accounts Cordially
Invited*



Chestnut St. Store Open Wed. & Fri. Evening
Neighborhood Stores Are Open Every Evening



The
Warwick

★
LOCUST AT SEVENTEENTH STREET
★

Afternoon or evening you'll enjoy delicious food . . . fine drinks . . . gay music amid smart surroundings at THE WARWICK. The famed Lamaze cuisine is featured in both the intimate Cocktail Lounge and the spacious Embassy Room. Dinner and Supper dancing in the Cocktail Lounge.



GERALD P. O'NEIL
Executive Vice President
and General Manager




● YOU'LL LOOK BETTER IN A BRENTWOOD SWEATER ●

PHILADELPHIA EAGLES

PLAYER ROSTER — 1942

No.	Player	Pos.	College	Wt.	Ht.	Age	Year in Pro Football
BACKS							
7.	Barnum, Feets	QB	West Virginia Wesleyan	200	6	30	Fifth
10.	Thompson, Tossin' Tommy	QB	University of Tulsa	190	6-2	25	Fourth
11.	Erdlitz, Dick	QB	Northwestern University	180	5-10	22	First
15.	Tomasetti, Lou	HB	Bucknell University	198	6	26	Fourth
27.	Davis, Twenty Grand	HB	University of Kentucky	180	6-1	27	Second
30.	Johnny Binotto	B.	Dusuesne	185	5'10		1st
31.	Williams, Ted	FB	Boston College	185	5-10	23	First
32.	Hall, Shine	FB	Brown University	210	6	29	Fifth
36.	Stackpool, Jack	FB	University of Washington	210	6-2	24	First
37.	Steel, Ernie	HB	University of Washington	191	5-11	24	First
40.	Pritchard, Bosh	QB	Virginia Military Institute	164	5-9	22	First
43.	Jim Lankas	B.	St. Mary's (Calif.)	215	6'2		2nd
44.	Johnson, Man-o-War	HB	University of Kentucky	216	6	30	Fifth
CENTERS							
50.	Hayden, Ken	C	University of Arkansas	210	6	23	First
52.	Graves, Ray "Gulliver"	C	University of Tennessee	206	6-1	23	First
55.	Marchi, Bassi	C	New York University	225	6-2	34	Second
GUARDS							
51.	Milling, Bert	G	University of Richmond	185	5-10	20	First
62.	Gerber, Elwood (Gerb)	G	University of Alabama	215	6	21	Second
63.	Pate, Rupe	G	Wake Forest College	205	6-1½	25	Third
67.	Conti, Ed	G	Bucknell University	200	5-11	29	Fourth
70.	Brennan, Leo	G	Holy Cross College	214	6	24	First
TACKLES							
71.	Hrabetin, Frank (Karloff)	T	Loyola University	227	6-4½	27	First
73.	Kasky, Ed	T	Villanova College	215	6-1	22	First
75.	Halverson, Bill	T	Oregon State College	235	6-3	23	First
76.	Eibner, "Big John"	T	University of Kentucky	228	6-2	26	Second
79.	Sears, Vic	T	Oregon State Colloge	212	6-3½	24	Second
72.	Levanitis, Steve	T	Boston College	221	6-2	23	First
ENDS							
80.	Supulski, Len	E	Dickinson College	180	6	22	First
81.	Priestley, Bob	E	Brown University	199	5-11	22	First
82.	Comb, "Doc"	E	Purdue University	181	5-10	22	First
83.	Smith, Jack	E	Stanford University	194	6-2	22	First
84.	Cabrelli, Larry	E	Colgate University	193	5-10	24	Second
89.	Meyer, Freddie	E	Stanford University	185	6	22	First

Head Coach: Alfred Earle "Greasy" Neale.
Assistant Coach: John Kellison.



CALLING ALL SEAFOOD FANS!
IT'S BOOKY'S — IN CENTRAL CITY — FOR LOBSTER, CRAB AND EVERY VARIETY OF
FRESH-FROM-THE-SEA FOOD . . . DELICIOUSLY SERVED.

Wines—Beers—Liquors
OPEN TILL MIDNIGHT

BOOKBINDERS So. **15th** ST.
SEAFOOD HOUSE INC.

"The Official Watch for Timing Today's Game is Longines—The World's Most Honored Watch."



It's all the GO CHESTERFIELD

Smokers cheer for the cigarette that really performs... gives them a Milder smoke... cheers them with its Cooler, Better Taste—

— that's CHESTERFIELD

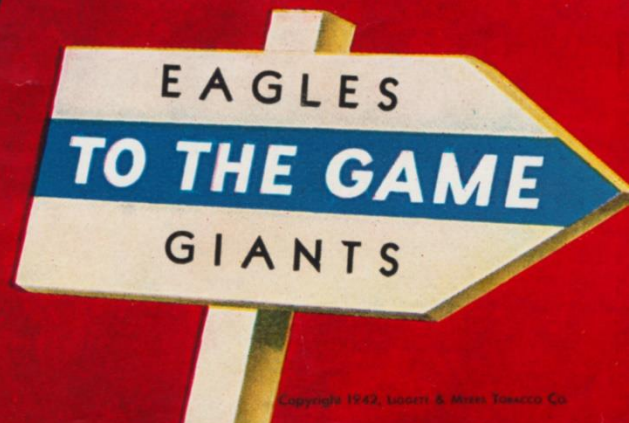


GIANTS

FB						
Marefos 70						
RHB		QB			LHB	
Cuff 14		Schaffer 20			Hapes 44	
RE	RT	RG	C	LG	LT	LE
Walls	Blozis	Buffington	Hein	Edwards	Cope	Adams
24	32	52	7	60	36	30

SQUAD LIST

4 Leeman, s b	24 Walls, e	44 Hapes, b
7 Hein, c	25 Principe, b	49 Klasoskus, t
8 Owen, b	27 Keahey, t	50 Bell, t
11 Barrett, c	28 Lieberum, b	52 Buffington, b
12 Cantor, b	29 Hiemstra, c	55 Avedisian, g
14 Cuff, b	30 Adams, e	60 Edwards, g
15 Soar, b	31 Lechner, g	66 Kline, e
17 Trocolor, b	32 Blozis, t	69 Stenn, t
20 Saffer, b	33 Seick, g	70 Marefos, b
21 Howell, e	34 Lascari, e	Hutchinson, b
22 Liebel, e	36 Cope, t	
	39 Chickerneo, b	
	42 Barker, b	



It's all the GO CHESTERFIELD

Smokers cheer for the cigarette that really performs... gives them a Milder smoke... cheers them with its cooler, better taste -

— that's CHESTERFIELD



GIANTS

RE	Walls	24
RT	Blizis	32
RG	Buffington	52
C	Hein	7
LG	Edwards	60
LT	Cope	36
LE	Adams	30
QB	Schaffer	20
RHB	Cuff	14
LHB	Hapes	44
FB	Marefos	70

SQUAD LIST

44	Hapes,	b
49	Klasoskus,	t
50	Bell,	t
52	Buffington,	b
55	Avedisian,	g
60	Edwards,	g
66	Kline,	e
69	Stenn,	t
70	Marefos,	b
	Hutchinson,	b
36	Cope,	t
39	Chickeneo,	b
42	Barker,	b
4	Leaman,	s b
7	Hein,	c
8	Owen,	b
11	Barrett,	c
12	Cantor,	b
14	Cuff,	b
15	Soar,	b
17	Trocolor,	b
20	Saffer,	b
21	Howell,	e
22	Liebel,	e

NEW YORK GIANTS

PLAYER ROSTER — 1942

4. Leemans, Tuffy	B	George Washington	198	6	29	Seven
7. Hein, Mel (Capt.)	C	Washington State	232	6-4	33	Twelve
8. Owen, Al <i>LH</i>	B	Mercer	205	6	27	Three
11. Barrett, Emmett	C	Portland University	192	6-2	22	One
12. Cantor, Leo	B	U.C.L.A.	195	6	23	One
14. Cuff, Ward	B	Marquette	196	6-1	28	Six
15. Soar, Hank	B	Providence	218	6	27	Six
17. Trocolor, Bob	B	Alabama	205	6-2	23	One
20. Shaffer, Leland <i>PO</i>	B	Kansas State	200	6	30	Eight
21. Howell, Jim Lee	E	Arkansas	218	6-6	27	Six
22. Liebel, Frank	E	Norwich University	203	6-1	23	One
24. Walls, Will	E	Texas Christian U.	220	6-4	28	Five
25. Principe, Dom	B	Fordham	210	6	25	Three
27. Keahey, Duce	T	George Washington	218	6-2	25	One
28. Lieberum, Don	B	Manchester (Indiana)	175	6	24	One
29. Hiemstra, Ed	C	Sterling	200	6	24	One
30. Adams, O'neale	E	Arkansas	195	6-3	23	One
31. Lechner, Edgar	G	Minnesota	200	6-1	22	One
32. Blozis, Al <i>ST</i>	T	Georgetown	245	6-6	23	One
33. Seick, Earl	G	Manhattan	195	6	31	One
34. Lascari, John <i>RB</i>	E	Georgetown	210	6	23	One
36. Cope, Frank <i>LT</i>	T	Santa Clara	232	6-3	26	Five
39. Chickeneo, John	B	Pittsburgh	210	6-2	25	One
42. Hutchinson, Bill	B	Dartmouth	185	5-10	25	One
44. Hapes, Merle	B	Mississippi	180	5-11	23	One
49. Hall, Harold	C	Springfield	210	6-2	27	One
50. Bell, Kay	T	Washington State	230	6-2	28	One
52. Buffington, Harry	B	Alabama A. & M.	195	6	23	One
55. Avedisian, Chas.	G	Providence	195	5-9	24	One
60. Edwards, Bill <i>RB</i>	G	Baylor	210	6-3	23	Three
66. Kline, Harry	E	Emporia Teachers	198	6-2	26	Three
69. Stenn, Paul	T	Villanova	236	6-1	23	One
70. Marefos, Andy G.	B	St. Mary's (Cal.)	222	6	23	Two

Head Coach—Steve Owen, Phillips U.

Ass't. Coach—Bill Owen, Phillips U.

Trainers—Gus Mauch & Charley Porter

Team Physician—Dr. Francis J. Sweeney

When you want

A BIG, THICK, JUICY STEAK

—of the ultra-tender, melt-in-your-mouth variety — make a beeline for Booky's.
Famous for steaks as well as seafood.

OPEN DAILY AND SUNDAY
TILL MIDNIGHT
Not Connected With Any Other Restaurant

BOOKBINDERS

SEAFOOD HOUSE INC.

215
So. 15th
ST.

"The Official Watch for Timing Today's Game is Longines—The World's Most Honored Watch."

**Home of Seven
Famous Brands**



**HAMPDEN HALL
HAMPDEN HALL (Imperial)
BRITISH GUILD
LORD WINSTON
BROOKDALE
PENNURST
WALL STREET**

From **\$26.50**

Sam **G**ERSON
PHILADELPHIA

Where Sixth crosses Bainbridge

Listen to our news extra on WIP
nightly at 8:45 P. M.

OPEN EVENINGS

This Year . . .

YELLOW CABS are so busy handling the essential transport of this Arsenal City that it is impossible to provide Cabs at the close of the Football Games.

We look with eagerness toward that Victory Day when we shall be able to serve you again as we have in the past. Thank you for your forbearance.

***Yellow Cab Co.
Locust 3200***

● YOU'LL LOOK BETTER IN A BRENTWOOD SWEATER ●

GIANTS



MEL HEIN
Center and Captain

BILL EDWARDS
Guard

Catching Ball
WILL WALLS
End

AL BLOZIS
Tackle

PAUL STENN
Tackle

MERLE HAPES
Back

Kicking
LEO CANTOR
Back

DOM PRINCIPE
Back



GIANTS



STEVE OWEN
Head Coach

BILL OWEN
Line Coach

CHARLES AVEDISIAN
Guard

JIM HOWELL (21)
End

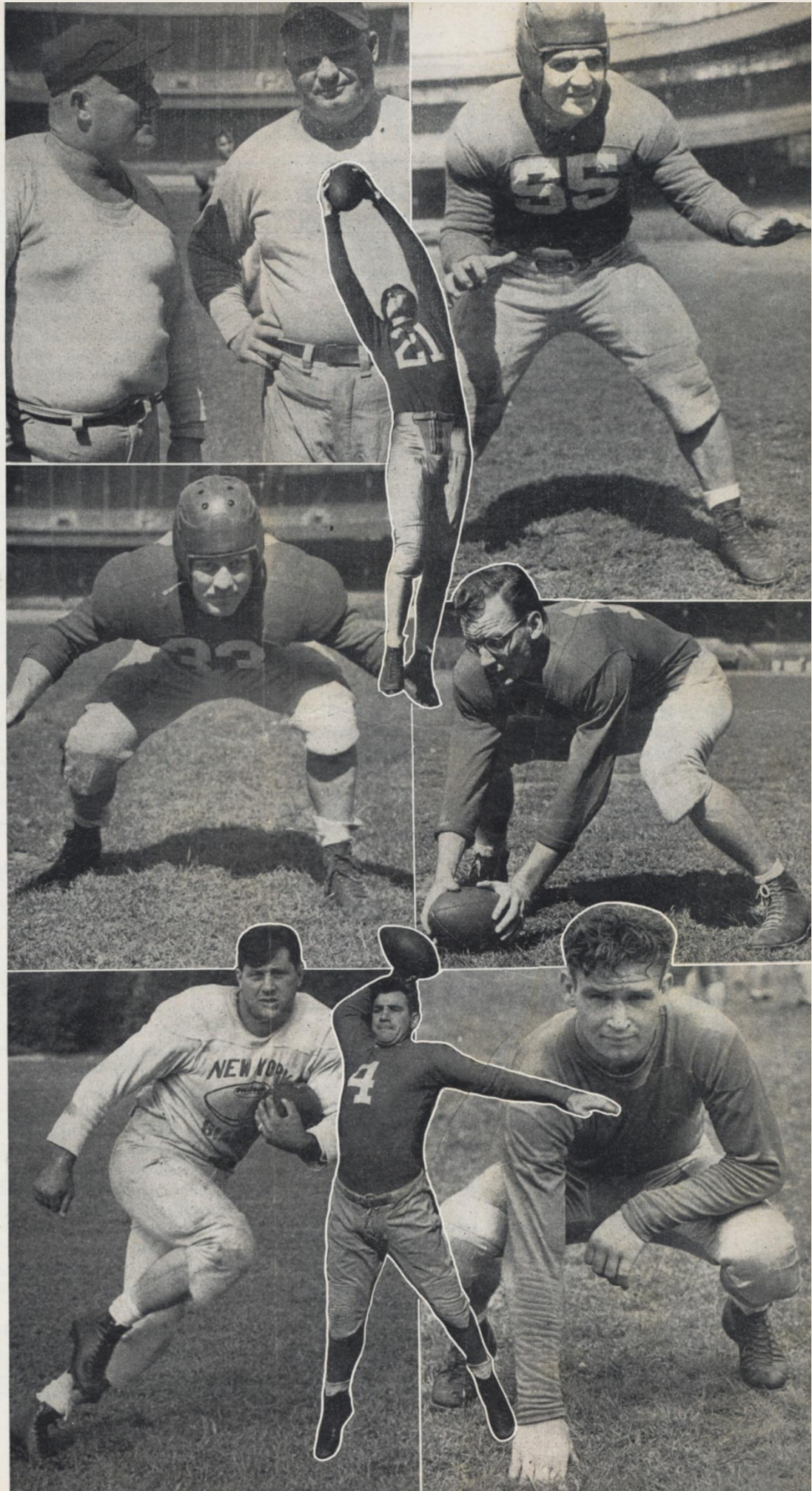
EARL SEICK (33)
Guard

EMMETT BARRETT
Center

JOHN CHICKERNO
Back

TUFFY LEEMANS (4)
Back

FRANK COPE
Tackle



BRIEF BIOGRAPHIES

#11, RICHARD ALFRED ERDLITZ Quarterback—Northwestern Univ. 22 Yrs.—5'-10"—180 lbs.

"Eck" Erdlitz comes from a famous athletic family. His father was the famous national pro league official, R. J. Erdlitz and his mother was Michigan State Tennis champion for several years. He says he inherited his nickname, "Eck" from his father who inherited it from the famous Walter Eckersall of Chicago. He began his football career at the tender age of 4 as mascot for his father's team. Last year he sparked the Northwestern team to one of its most successful seasons, and Eck says that his greatest single thrill in football came when his team defeated Notre Dame 20-0 in 1940.

He has won the big 10 honor awards for scholarship and athletics and was selected for the Chicago Tribune College All Stars team in 1942. He is a resourceful field general, a good passer and kicker and a tricky openfield runner.

Erdlitz says he loves to get around and during two of his summer vacations from college he traveled with the Ringling Brothers Circus, acting as trainer for Gargantua. "What a fullback that guy would make," says Eck. Despite the fact that he plays with contact lenses in his eyes, Erdlitz has no fear and is in the midst of every play every minute he is on the field.

#31, THEODORE PATRICK WILLIAMS Fullback—Boston College 23 Yrs.—5'-10"—185 lbs.

During the last 4 years sports fans have been confused by reading about Ted Williams of Boston College in their newspapers. By the time last Fall rolled around, however, the sports fans of the country became very much aware that there are two Ted Williams from Boston and that one of them is the best running halfback to come out of B. C. in many a year.

Ted Williams is a son of a Gloucester, Massachusetts fisherman. Ted himself has made several trips to the Grand Banke and he likes to remember the rush of water over the deck of the trim Gloucester fishing boat on which he spent so many weeks. One of his best friends in Gloucester was Stirling Hayden, the movie actor, whom Ted recalls as the head mastman on a fishing schooner.

Ted began his collegiate career at Notre Dame, but at the completion of his freshman year he transferred to Boston College. After a year of ineligibility because of this transfer, Ted got under way with the 1940 Boston College team which defeated 10 opponents in their regular schedule and went on to trim Tennessee in the Sugar Bowl.

The next year one of Greasy Neale's most successful students assumed the helm at B. C. Coach Denny Myers switched Ted to fullback and introduced the T formation. Ted proved the soundness of his coach's daring by leading the Eagles' backs in rushing. He finished 17th in the nation among the leading college games. Despite his 185 pounds he was the fastest man of Boston College and when to this you add his savage straight arming, you have a picture of the perfect T formation fullback.

He was married in the spring of this year and thinks that next to his wife, the most attractive woman is Joan Fontaine.

#32, IRVING ALGER HALL Fullback—Brown University 29 Yrs.—6'—210 lbs.

"Shine" Hall started playing football when he was 13 years old and he has played every year since, including three years of semi-pro football before he entered college. He met his wife while he was skiing a slope in New Hampshire and married her two years later when he was a freshman in college. He's never been injured in a football game but during his last year in high school, just before his last game, he was playing touch football and tagged someone's head with his nose. "Ever since then," he says, "I've looked like a football player."

"Shine" Hall was the finest punter in New England as an undergraduate. He received All American rating in 1937 and 1938 and then went to the Jersey City Giants where he has played for the last three years. He stayed out of National League football because he wanted the time to complete his studies as an electronic engineer. He is licensed now as a first class radio telephone operator. Upon finishing his studies in June, 1941, he made it known he was ready to devote his full time for one year to football and the Eagles immediately signed him.

He is an 11th generation direct descendant of both Miles Standish and John Alden. Miles Standish's son, John Standish, married John Alden's daughter and the great grandfather of "Shine" was their son. A brother, Richard Hall, is now carrying on the Standish tradition in his 21st year as a member of the U. S. Marine Corps.

His most pleasant football memory is the day that he was pitted against Sid Luckman when "Shine" was playing his last college game for Brown against Columbia. "Shine" scored 27 points, including 4 touchdowns to lead Brown to a 36-27 victory.

#44, BERT EDWARD JOHNSON
Halfback—University of Kentucky
30 Yrs.—6'—216 Lbs.

This native son of Kentucky is half Irish and half Indian, and during his undergraduate days he was nicknamed "Man-'O-War". He explains that all football players are named after race horses in Kentucky. He also played on the first All Southeastern Conference team in 1935 and starred in baseball and in track as well as in football. He won 8 letters before he graduated.

He is probably the heaviest halfback in pro ranks and yet despite his size there are only 3 men on the squad who can outrun him. He is a straightaway runner, finding it easier and more effective simply to run right over a would-be tackler than to dodge him.

In the Fall of 1936 he went with the Chicago Bears and played with them for a year and a half, when he was traded to the Chicago Cardinals. He explains that the Bears let him go to the Cardinals after he had run back two kickoffs, one for 35 yards and one for 46 yards, fumbled both to set up touchdowns for the Green Bay Packers. George Halas, he says, stayed up most of that night trying to get rid of him.

Bert Johnson played first string fullback for the Chicago Cardinals until Marshall Golberg displaced him. The Eagles gave up Johnny Knolla, a 1941 draft selection who never reported for Johnson.

"Man-'O-War" Johnson is aptly named. He has the most perfect physique of anyone on the squad and Greasy Neale is counting heavily on him to carry the ball like a scatback and play defensively like a 250-pound tackle.

* * *

#52, SAMUEL RAY GRAVES
Center—University of Tennessee
23 Yrs.—6'-1"—206 lbs.

Captain Ray Graves of the 1941 Tennessee dreadnaught is no stranger to big-time competition. He managed to break down Colonel Neyland's reluctance to use first-year players when he broke into the Tennessee line-up as a guard in his sophomore year and finished that season by starting in the Rose Bowl. In his junior year he moved over one notch to center and it was as the finest center in the Southeastern Conference that he made his name. He did not confine himself to football as an undergraduate. He played on the basketball team and was elected to the Senior Honor Society, is listed on the honor roll in "Who's Who in American Universities" from 1938 until his graduation, and was the chairman of the Athletic Council.

In college his roommates were Ed Cifers and Bob Suffridge, the great rookie guard of last year's Philadelphia Eagles.

In his junior year he played in the Sugar Bowl, and last winter he spent his Christmas holidays as the starting center for the South in the North-South football game.

Ray has what it takes to be the captain of football teams. He was elected captain of four different teams, but only the last time did he carry out his duties. He was elected captain of Rockwood High School and before the season moved to Knoxville where he was elected captain the following season. Again he had to move, this time to Tennessee Wesleyan College and in 1937 was elected captain. Again before the season, he transferred to Tennessee and after 4 years was elected captain of the Tennessee team and led them through a successful season.

His nickname is Gulliver because of his many travels and he hopes, eventually, to go into coaching.

* * *

#55, BASILIO JOHN MARCHI
Center—New York University
34 Yrs.—6'-2"—225 lbs.

"Base" Marchi is the oldest player on the 1942 Eagles. He was drafted by Pittsburgh at the end of his college football career in 1937 and after one year with them he entered business. Each Fall he has fought against re-entering football because he has felt that it would interfere with his progress in the business world, but this Fall he could stand it no longer and signed up with the Eagles.

He likes to be remembered most the time that a guard on the Fordham team took a punch at him, whereupon Mr. Marchi picked him up on his shoulder, carried him 15 yards to his own bench and deposited him at his coach's feet with the recommendation that Crowley replace his punching football player. Crowley thanked him and sent in a substitute.

Marchi is still another of the Eagles centers who began working at that position late in his football career. During his junior and seniors years at NYU he was a guard and took up centering only after all the other centers had been injured, half-way through his senior year.

* * *

#73, EDWARD KASKY
Tackle—Villanova College
22 Yrs.—6'-1"—215 lbs.

Ed Kasky's favorite pastime is swimming in which he won two letters at Villanova and next to that, he likes track, where he also won two letters, but football is what brings him to the Eagles. When it comes to Football, Ed's favorite occupation is kicking goals. He started playing his football on a high school team coached by Villanova's great drop kicker, Charlie McCuckin, but in spite of this one-track interest in knocking the ball between the uprights, Ed can do most of the other things that pro League tackles have to do. He is 'big enough and rough enough' to make any team in the world reported the Eagles' scouts and so Kasky continues his football in his own back yard.

POPULAR NIGHT CLUBS

JACK LYNCH'S *Walton Roof*

WALTON HOTEL, Broad and Locust Streets
Presents a BRILLIANT STAR STUDED REVUE

STIRRING — GLAMOROUS — FASCINATING

Twice Nightly 8:30 and 12:30

DINNER FROM \$1.50

NEVER A MINIMUM OR COVER

Except Saturdays and Holidays

SOMETHING DIFFERENT!
SENSATIONAL REVUE
McGEES CLUB 15
15 SOUTH 16th STREET
BANQUETS — PARTIES
LOCust 8838

JERSEY'S NEWEST
Modernistic Show Place

NEIL DEIGHAN'S
At AIRPORT CIRCLE
Pennsauken, Camden, N. J.

For your group parties a
Full Course Dinner with
A VICTORY COCKTAIL

PALUMBO'S

824 Catherine St.

WAL. 5940





It's from my Dad — He wants me to wire him some money!"



"Now, remember, kick with the tide!"

MITCHELL & NESS

Sporting Goods

Official Outfitters for the Phila. Eagles

1209 ARCH STREET

Philadelphia, Pa.

NEWS REEL LABORATORY

PRODUCER OF

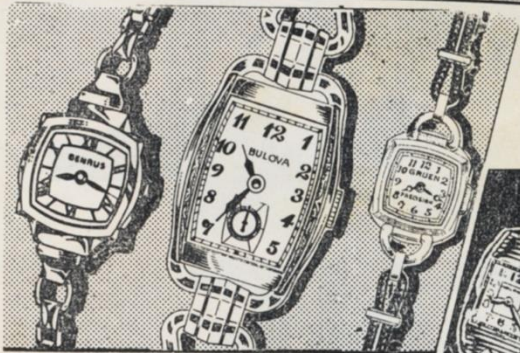
SILENT — COLOR — SOUND
MOTION PICTURES
FOR ALL OCCASIONS

— CALL —

NEWS REEL LABORATORY

1707 SANSON STREET

RITTENHOUSE 3892



AS LITTLE AS **\$1.25 A WEEK**

BUYS THE WORLD'S BEST WATCHES

AT **HUBERMAN'S**

JEWELERS
SINCE 1905

from **\$24.75** to **\$55**

HUBERMAN'S

109 S. 11TH ST. • PHILA., PA.

802 BROADWAY • CAMDEN, N. J.

846 CUMBERLAND ST., LEBANON, PA.

No 9078

If this is the lucky number announced during half time, the bearer will receive a famous make watch through the courtesy of HUBERMAN'S.



DON'T LET FATIGUE play havoc with looks! Two drops of **EYE-GENE** speedily clear eyes reddened from fatigue, driving, over-indulgence. **EYE-GENE** is playing an important role in our Defense Program, too. Men working nights, under artificial lighting, find **EYE-GENE** especially refreshing to their eyes and a helpful aid to clear vision. Wash your eyes with this specialist's formula today and see how soothed they feel. Purchase **EYE-GENE** at any drug, department, or ten cent store.

Use

EYE-GENE
Eye Drops

Active ingredient
Lactogen-Hydroxy-2-
methyl-5-naphthyl-3-
carboxy-4-pyridone
hydrochloride

PLAZON PHARMACAL
BOSTON, MASS. U.S.A.
40 Fl. Ozs.

Tested and Approved
4357-E
by
**Good Housekeeping
Bureau**
GOOD HOUSEKEEPING MAGAZINE

EYE-GENE



“Stand by
for
refreshment”



You trust its quality

When you're doing your bit on any job, pause and turn to refreshment right out of the bottle,— ice-cold Coca-Cola. A moment for ice-cold Coca-Cola is a little minute long enough for a big rest.

BOTTLED UNDER AUTHORITY OF THE COCA-COLA COMPANY BY

COCA-COLA BOTTLING COMPANY OF PHILADELPHIA

SIGNALS & PENALTIES

BY - JOHNNY

"CALL FOR PHILIP MORRIS"



Holding. (Penalty—by offense, 15 yards; by defense, 5 yards.)

Interference with forward pass. (If penalty on offense, 15 yards and loss of down. Interference by defense, ball to offense on spot of foul as first down.)



Time out.

Off-side or violation of kick-off formation. (Penalty, 5 yards.)



Penalty refused, incomplete pass, missed field goal or conversion, both sides off-side, etc.



Extra time-outs. (Penalty, 5 yards.) Delay of game. (Penalty, 15 yards.)



SMOKING PLEASURE WITHOUT PENALTIES

America's FINEST Cigarette

Crawling or pushing, 5 yds.; helping ball carrier, 15 yards.



Illegal forward pass. (Penalty, 5 yards.)



Safety.



Score—touchdown, field goal, or conversion.



Player illegally in motion from shift or huddle. (Penalty, 5 yards.)



Unnecessary roughness, clipping, or roughing the kicker. (Penalty, 15 yards and possible disqualification.) Running into kicker. (Penalty, 5 yards.)

