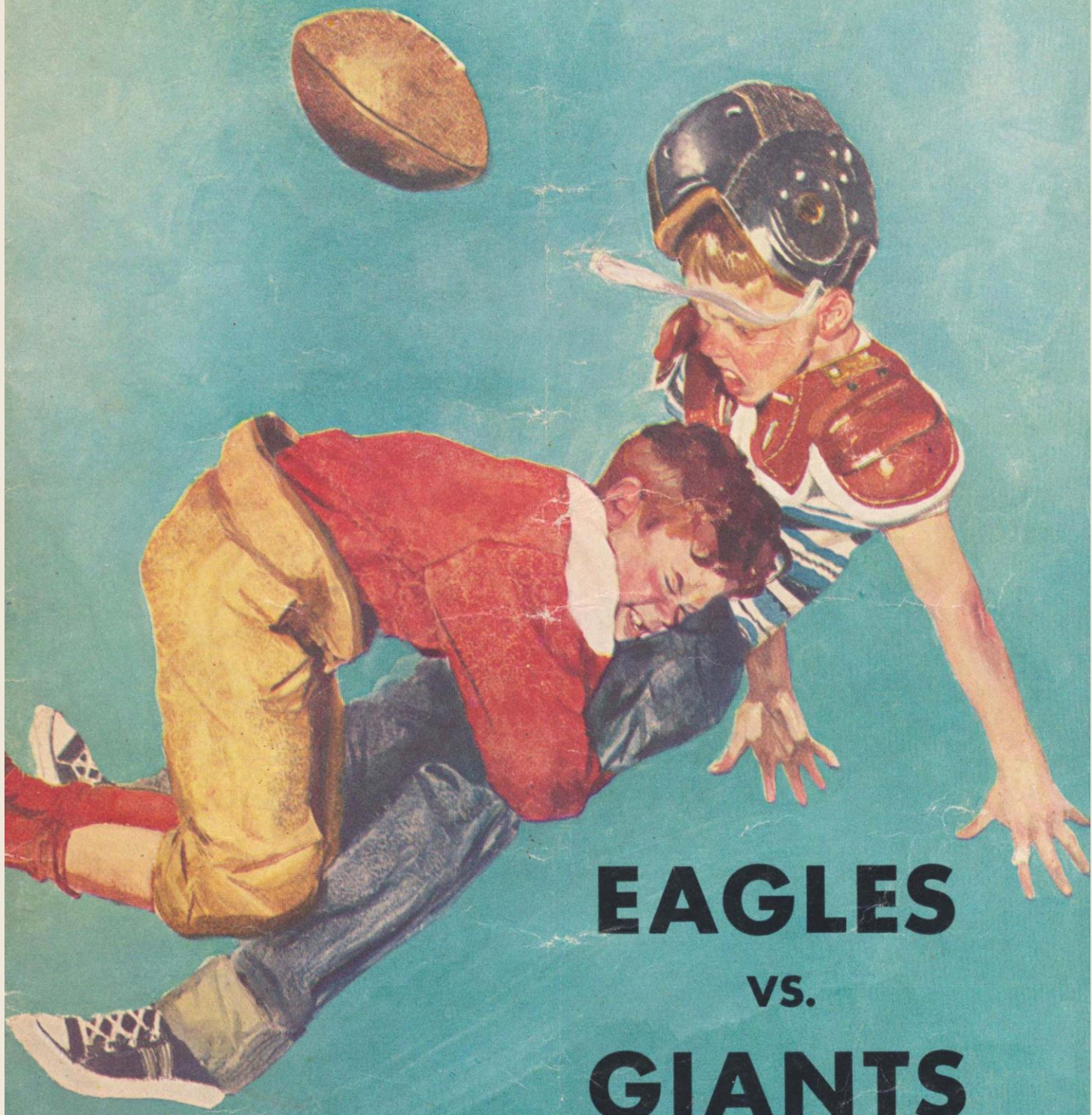


**DECEMBER 15, 1956
CONNIE MACK STADIUM**

OFFICIAL PROGRAM

50¢



**EAGLES
VS.
GIANTS**

McClellan



TAKES THE LEAD

WITH THIS POWERFUL 1956-57 LINE-UP OF PORTABLE, CLOCK AND TABLE . . .

RADIOS

COME IN AND SEE . . . HEAR . . . THIS FABULOUS NEW



All Transistor
POCKET SIZE PORTABLE

Model 677, a miracle in electronics . . . actual weight only 15 ounces with battery, will fit securely in any man's jacket pocket. Boasts an all-new powerful loudspeaker of special design, built-in iron core antenna, Civil Defense band markings on the radio dial, an earphone may be plugged into back of set when private listening is desired (ideal for all the games). Long life battery—at least 100 hours of intermittent operation at medium volume per battery change. Available in red, ebony, ivory and turquoise.

New Low Price

\$42.95

THE PERFECT XMAS GIFT
EASY BUDGET TERMS

Model 860



GENERAL ELECTRIC TABLE RADIOS

G-E radios bring the world to your fingertips, with sound no other radios can match. There's a G-E radio for every purse and purpose. Choose from the latest designs and smartest color combinations.

AS LOW AS **\$14.95**

Model 850

Model 670



GENERAL ELECTRIC PORTABLE RADIOS

Your constant companion . . . the latest in electronic "know-how" housed in lifetime plastic cabinets. Features include the largest speaker of any radio its size. Powered by extra-long-life batteries. Choice of the latest color combinations.

AS LOW AS **\$19.95**

Model 665

Model 911



GENERAL ELECTRIC CLOCK RADIOS

Your electronic servant—a convenience outlet on the back of the set for use with home appliances. Wake up to music or buzzer alarm. Automatically turns it self off.

AS LOW AS **\$24.95**

Model 930

PEARLMAN'S DISCOUNT WAREHOUSE

4000 N. BROAD ST., PHILA.

21st & FEDERAL STS., CAMDEN



THE PHILADELPHIA EAGLES, Inc.

FOOTBALL CLUB

FRANK L. McNAMEE
President

JAMES P. CLARK
Vice President

JOSEPH A. DONOGHUE
Secretary

HARRY S. SYLK
Treasurer

VINCENT A. McNALLY
General Manager

HUGH J. DEVORE
Head Coach

EDWARD S. HOGAN
Publicity Director

S. E. CORNER 15th AND LOCUST STREETS • PHILADELPHIA 2, PA. • PEnnypacker 5-4014

SEASON BOOKS FOR CHRISTMAS

Here is a reproduction of the attractive gift certificate available for fans who want to give Eagles tickets as presents for Christmas or other occasions. The sender will long be remembered by anyone who receives this thoughtful gift.

Gift Certificate

TO _____

FROM _____

PRESENT THIS CERTIFICATE TO *The Philadelphia Eagles* AND YOU WILL RECEIVE _____ SEASON BOOKS FOR THE EAGLE'S HOME GAMES OF THE _____ SEASON.

PHILADELPHIA EAGLES FOOTBALL CLUB

Secretary

APPLICATION FOR 1957 SEASON GIFT CERTIFICATES

Phila. Eagles, Inc.
15th & Locust Sts., Phila. 2, Pa.

Enclosed is my check for \$ _____ for _____ Season Ticket Gift Certificates @ \$10.20 , \$15.30 , \$20.40 , \$25.50 , tax included.

NAME _____ (Please Print)

PHONE _____

ADDRESS _____

CITY _____ ZONE _____ STATE _____

All prices include Taxes. Make Checks Payable to "Philadelphia Eagles." Add 25c to cover insurance and mailing.

NOTE: Clip out the above order and mail with check or money order covering \$10.00 deposit on each book to The Eagles, 15th and Locust Streets, Philadelphia 2, Pa.

Merry Christmas Happy New Year

OTTO GRAHAM SAYS:

you call the signals

**on
trade-ins**



MOTOROLA TV

FREE!

**Otto
Graham
Pro
Football
Digest**

Mr. Football
**OTTO
GRAHAM**



- 32 pages of pro football news
- complete game and TV schedules
- articles by leading sports writers
- feature stories by top coaches

Just for
Coming in to See

MOTOROLA TV

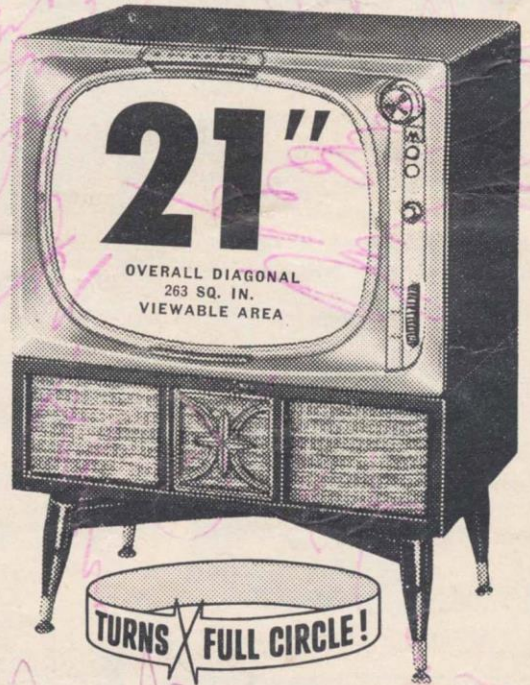
**OTTO GRAHAM
SPECIAL**

This Swivel
Consolette
That Tunes
Itself
Automatically

You'll really score when you trade your old TV set for this all-new 1957 Motorola TV. You'll get more for your old set, and get the finest TV in town

**SPECIAL
VALUE!**

**SPECIAL
PRICE!**



URNS FULL CIRCLE!

Model A21T33CH the ultimate in home entertainment . . . you need never adjust fine tuning—automatically corrects to best sound and picture everytime. Aluminized picture tube. Pushbutton on-off switch. Handsome charcoal finish—also available in mahogany or blond grain.

NOW ONLY **\$239⁹⁵**

LESS YOUR
TRADE-IN



**IT
SWIVELS**

MOTOROLA PHILA. CO.

WHOLESALE
DISTRIBUTOR

120 S. 30th ST., PHILA.

• EV 2-4900

MANY BREAKS — ALL BAD!

By BY SAAM

Radio-TV Sportscaster

After 17 campaigns of football in the NFL describing the flights of The Philadelphia Eagles, this commentator feels free to make a couple of observations:

(1) In 1956, everything happened to the Eagles. Most of it was bad; and to be more explicit, the kind of things that shouldn't happen to a spavined sparrow. For instance, there are 4 games I can recall where one completed pass, one fumble or one first down could have turned a defeat into a win; and with that little turn around, the Eagles could be 7-3-1 instead of 3-7-1 and be leading the Eastern Conference.



By Saam

(2) That "wait till next year" line is almost worn out, yet this spieler couldn't help but get excited over the Birds' picks for 1957.

If this sounds like a commercial, please hold the phone. Let's examine some of the reasons that general manager Vince McNally won't lose as much off-season sleep as usual. Wrapped up in a tidy package it comes out like this: the players acquired in the recent National League draft, the players coming back from the Armed Forces, and the talent on hand.

Better still, there is another draft session coming up in January and the Eagles hope to pick some strong and talented linemen from the college draft bag.

Coach Hugh Devore and his assistants are still wondering how they managed to get such

high class picks in the first draft — Clarence Peaks, Bill Barnes, Tommy McDonald, and Sonny Jurgenson — all with All-American ratings. Mid-westerners tell us Peaks, until injured in one of Michigan State's earlier games, was easily the best back in the country. They believe he has what it takes to be another Ollie Matson.

Barnes attracted widespread attention at Wake Forest and when Wake Forest players attract widespread attention, they have to be better than good. He is a real sleeper.

Everybody knows about Tommy McDonald. If he turns out to be something on the order of Doak Walker, the Eagles won't be the least bit surprised. As for Jurgenson, Eddie Erdelatz, the Navy Football Coach said about this fellow, "Whoever drafted him knew what they were doing."

Two players are getting out of the Army. They are fullback Neil Worden and guard Menil Mavraides. A huge quarterback, Bob Hughes, who starred for Mississippi Southern, also will be available next year.

Of course, in 1957 we will have 11 other players with the kind of experience that makes a difference in the world's toughest business. Moving into the sophomore class will be Ken Keller, Don Schaefer, Pete Retzlaff, Willy Berzinski, Rocky Ryan, Bob Pellegrini, Frank D'Agostino, Dick Murley, Hank Burnine, Tom Dimmick and Johnny Bredice. Also, by next season Harry Dowda, Jerry Norton, Skippy Giancanelli, Norm Willey, Bill Stribling and Ted Wegert will be over the injuries that caused some forced landings by the Birds this year. Added to all of this the likes of Chuck Bednarik, Marion Campbell, Jess Richardson, Tom Scott, Bobby Thomason, Adrian Burk, Tom Brookshier and Wayne Robinson, the Eagles have a high-flying outlook for 1957.

Plan your
Southern
California
vacation to
include →

FOOTBALL
PRO BOWL

The All-Star Pro-Bowl Game
between the Eastern
Conference All-Stars and the
Western Conference All-Stars at the
COLISEUM
LOS ANGELES
Sunday, JAN. 13th



Philadelphia Eagles Football Club, Inc.

15TH & LOCUST STREETS, PHILA, PA.

Dear Fans:

We come to the end of another football season with this game today and once again we are indebted to you, our fans, for your wonderful support. Many problems beset us during the season as you well realize. Serious injuries to seven key players and the inexperience of our fine rookies were major factors in the season's record.

On our roster today you will note there are 17 new players on our squad of 33, including eleven rookies, an indication of our untiring efforts to give you a winner. Most of our mistakes this season were typical of a young, green team. But it was the type of team that improved with each game.

We look forward to 1957 with a great deal of anticipation. We were quite fortunate in selecting the nation's greatest collegiate ball carriers at our recent draft meeting. As you probably already know, we have signed Clarence Peaks, Michigan State's all-around back for 1957. He was our number one selection. Among others also selected were halfbacks Tommy McDonald of Oklahoma; Bill Barnes of Wake Forest and quarterback Sonny Jurgensen of Duke University. We are confident these new players, added to our strong and young nucleus, will provide in 1957 what we lacked in 1956.

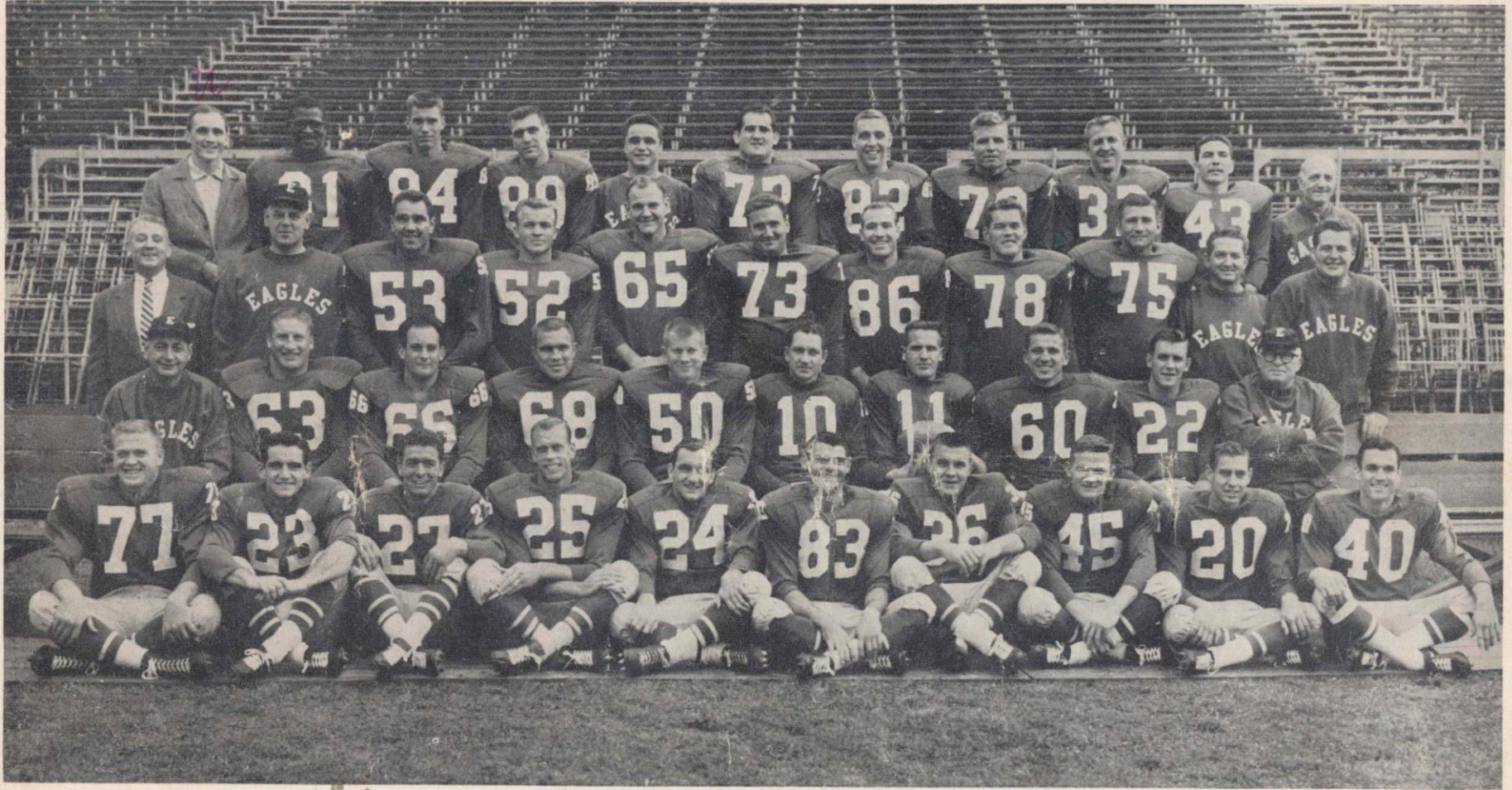
Management, players and coaches take this opportunity to wish all of you the very best for the holidays.

Sincerely,

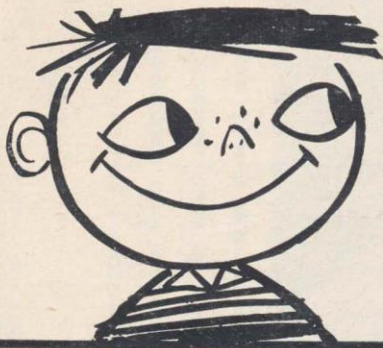
Frank L. McNamee
President

- | | | |
|---------------------------|-------------------------|--------------------------|
| <i>Rayne Robinson</i> | <i>Willie Berginski</i> | <i>Skip DiSiccanelli</i> |
| <i>Frank J. DiGaetano</i> | <i>Tom Leland</i> | <i>Tom Scott</i> |
| <i>Kenneth Guxford</i> | <i>Bill Stubling</i> | <i>Norm Tiller</i> |
| <i>Bob Kelley</i> | <i>Don Schaefer</i> | <i>Biffie Bauer</i> |
| <i>Jim Weatherall</i> | <i>'Fen Keller'</i> | <i>Tom Semmel</i> |
| <i>John Bradley</i> | <i>Cable Bell</i> | <i>Marion Campbell</i> |
| <i>Tom Brunkie</i> | <i>Frank Wydo</i> | <i>Pete Postoff</i> |
| <i>Adrian Burk</i> | <i>Bob Pellegrini</i> | <i>Lee Riley</i> |
| <i>Bob Thomason</i> | <i>Chuck Bednarik</i> | <i>Rocky Ryan</i> |
| <i>Frank Wiche</i> | <i>Richard Murley</i> | <i>Jack Banine</i> |
| <i>Fred Silenbach</i> | <i>Buck Lanehart</i> | <i>Sid Youngelman</i> |
| | <i>Tip Wegert</i> | <i>Bobby Walatka</i> |
| | | <i>Dick Biddis</i> |
| <i>Hugh Devore</i> | <i>Steve Owen</i> | <i>Bucko Kilroy</i> |
| | | <i>Charlie Gauer</i> |

1956—PHILADELPHIA EAGLES—1956



FRONT ROW (Left to Right): JIM WEATHERALL, t; KEN KELLER, b; SKIPPY GIANCANELLI, b; PETE RETZLAFF, b; DON SCHAEFER, b; BOBBY WALSTON, e; DICK BIELSKI, b; ROCKY RYAN, b; BIBBLES BAWEL, b; TOM BROOKSHIER, b.
SECOND ROW (Left to Right): HUGH DEVORE, head coach; KEN HUXHOLD, g; FRANK D'AGOSTINO, g; MAURICE NIPP, g; BOB KELLEY, c; ADRIAN BURK, qb; BOBBY THOMASON, qb; CHUCK BEDNARIK, lb; LEE RILEY, b; STEVE OWEN, assistant coach.
THIRD ROW (Left to Right): ED HOGAN, publicity director; CHARLES GAUER, assistant coach; BOB PELLEGRINI, g; WAYNE ROBINSON, lb; TOM DIMMICK, t; SID YOUNGELMAN, t; NORMAN WILLEY, e; MARION CAMPBELL, t; FRANK WYDO, t; FRANK WIECHEC, trainer; FRANK KILROY, assistant coach.
BACK ROW (Left to Right): JERRY NORTON, b; EDDIE BELL, b; HANK BURNINE, e; JOHN BREDICE, e; TED WEGERT, b; JESS RICHARDSON, t; TOM SCOTT, e; BUCK LANSFORD, t; WILLIS BERZINSKI, b; BOB SMITH, b; FREDDIE SCHUBACH, equipment manager.

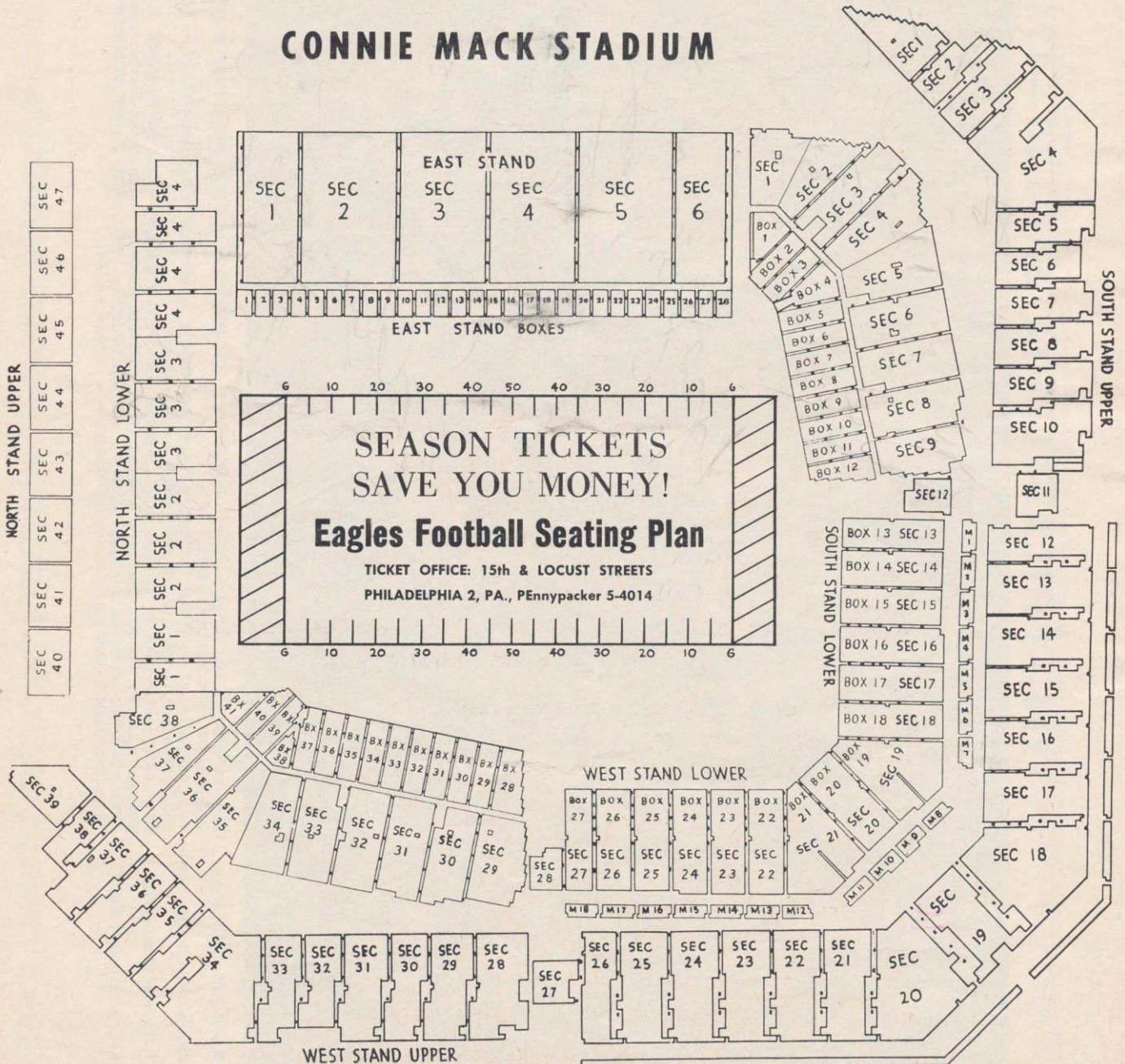


world's most exciting flavor!

FORMOST

Kosher smoked meats... all beef!

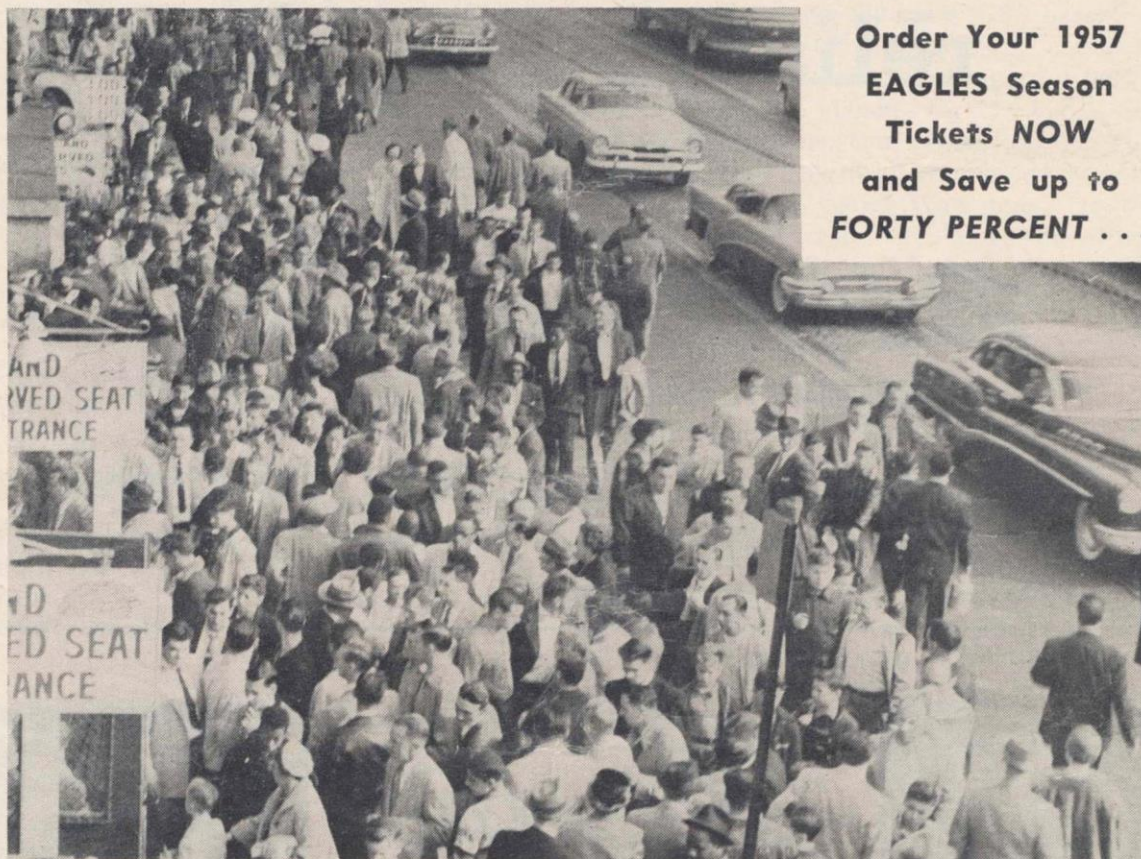
CONNIE MACK STADIUM



NOTICE! You can get 1957 Season Tickets in the North or South Lower Stands for ALL six Eagles home games for only \$10.20 total — a saving of 40%! See page 5.

Don't Let This Happen to You!

**DON'T GET SHUT OUT FOR THE BIG GAMES
AT CONNIE MACK STADIUM**



**Order Your 1957
EAGLES Season
Tickets NOW
and Save up to
FORTY PERCENT . . .**

Picture taken at Eagles vs. Cleveland game at Connie Mack Stadium when more than 10,000 people were turned away. A record 39,303 attended this game.

OUR BARGAIN PRICES

Season Tickets — \$10.20 - \$15.30 - \$20.40 - \$25.50 — for six home games.

Single Game Prices — \$3.00 - \$4.00 - \$5.00.

APPLICATION FOR 1957 SEASON TICKETS

15th & LOCUST STREETS, PHILADELPHIA 2, PA.
THE PHILA. EAGLES, INC. FOOTBALL CLUB

PHONE: PE 5-4014

Enclosed is my deposit of \$ covering my application for 1957
No. of Books

Season Tickets—Priced \$10.20 \$15.30 \$20.40 \$25.50 for six home games.

NAME PHONE
(Please Print)

ADDRESS

CITY ZONE STATE

All Prices Include Taxes. Make Checks Payable to "Philadelphia Eagles." Add 35c to cover insurance and mailing.

Note: On any pre-season games played, in or near Philadelphia, season ticket holders will be given preference on tickets.

Always reliable



Reddy Kilowatt

YOUR DEPENDABLE ELECTRIC SERVANT

PHILADELPHIA ELECTRIC COMPANY

A BUSINESS-MANAGED, TAX-PAYING UTILITY COMPANY OWNED BY NEARLY 100,000 STOCKHOLDERS

OFFICIAL WATCH FOR



U. S. OLYMPIC
COMMITTEE
1948-1952-1956



NAT'L AERONAUTIC
ASSN.



NAT'L COLLEGIATE
ATHLETIC ASSN.
CHAMPIONSHIPS



AMERICAN AUTO-
MOBILE ASSN.



NATIONAL SKI
ASSN.



AMERICAN
POWERBOAT
ASSN.



AAU
CHAMPIONSHIPS



NATIONAL HORSE
SHOW ASSN.

and many others

Longines

THE WORLD'S MOST HONORED WATCH

Official Watch for the

EAGLES GAMES

Longines, first watch of sport, is recognized as official for timing world records and international events by all international sports and contest associations. Every Longines watch, for whatever its use, is made to be the best of its kind. For yourself, as a gift, no other name on a watch means so much as Longines, the world's most honored watch.



10 WORLD'S FAIR
GRAND PRIZES
28 GOLD MEDALS



Longines watches to cope with outdoor life—fully protected against all common watch hazards. For her—Longines Skylark "A.P." For him—Longines Sportsman "D", each \$89.50.

Other Longines watches from \$71.50.

Longines-Wittnauer Watch Company

GIANTS BIOGRAPHIES

BEN AGAJANIAN—End

Bootin' Ben is strictly a place kicker. He has never scored a touchdown but is the fourth best scorer in Giant history. Scored 62 points in '55 on 32 extra points and 10 fields goals, the longest a 45 yarder. Kicked his first NFL field goal for Pittsburgh in 1945. Held distance (53 yards) and quantity (15 in a season) records in All-American Conference. Is a marvelous after dinner speaker. Owns sporting goods store in Long Beach, Calif., where he lives with wife and two children.

ROOSEVELT BROWN, JR.—Tackle

Brown was a football bargain, a No. 27 draft choice who made good. Now in his fourth season as regular left tackle on offense, he was a Pro Bowl choice last winter. May be fastest big man in the game. Excellent downfield blocker. Has great strength too, and was a heavyweight wrestler in college. Off-season occupation, teacher. Home town, Charlottesville, Va. Birthday, Oct. 20.

CHARLEY CONERLY—Quarterback

Conerly, now in his ninth season, is the Giants' Old Pro. He completed 98 of 202 passes in '55, for 1310 yards and 13 touchdowns, and a 48.5 completion average. Only 13 were intercepted. All-American at Ole Miss in '47, he originally was Washington property, but Giants managed to obtain rights to him in a trade. Was Rookie of Year in '48, setting NFL completion record of 36 passes in single game that year. In '54 became third NFL passer after Baugh and Luckman to connect for 100 touchdown passes. Former Marine Corporal in Pacific. Clarksdale, Miss., cotton farmer. Married. Birthday, Sept. 19.

BOBBY EPPS—Fullback

This little fireplug proved himself a first class big league fullback last year as he took over the regular berth in the offensive backfield. He gained 375 yards in 95 attempts and scored two touchdowns. Will complete a service hitch in time for last half of the current season. Drafted No. 14, 1954. All East selection at Pittsburgh, his home town. Birthday, March 25th. Married, 1 son.

FRANK GIFFORD—Halfback

The No. 1 draft choice of '52 was a busy Giant last season. Gifford, regular left halfback, gained 351 yards on 86 carries, a 4.0 average per carry. He caught 33 passes (tops on the Giants) for 437 yards. He completed 2 of 6 passes, both for touchdowns, for 96 yards. He returned five kickoffs for 114 yards. Scored seven touchdowns. One of his top college records was that only 3 of 111 passes were intercepted in three years. Was named to official All-American team of American Football Coaches Assn. Married, with two sons. Lives in Bakersfield, Calif. Birthday, Aug. 16.

ROOSEVELT GRIER—Tackle

This titanic tackle quickly became a favorite with Giant fans as a rookie last year. Opposing passers were constantly combing Grier out of their hair. Enemy backs could run neither around him nor over him. He is very big, very fast, very strong. Was twice named as afternoon's best defensive player in '55. A former shot putter, he won several national championships in college at distances around 57 feet, not long ago the world's record. A jazz pianist and singer, Grier is an entertainer of professional quality. Drafted No. 3, 1955. Home town, Linden, N. J. Single. Birthday, July 14.

DON HEINRICH—Quarterback

Heinrich was the Giants' starting quarterback on most occasions last season, his second as a pro. This arrangement not only permitted veteran Charley Conerly to study enemy defenses from the bench, it generally got the Giants off to a quick start. The cocky and resourceful Heinrich is at his best when lighting fires under a team. Completed 31 of 67 passes for 417 yards and two touchdowns. Scored two touchdowns on quarterback sneaks. Was NCAA passing champion in 1950 and '52 at Washington, one year setting a collegiate completion record of 60.9 percent. All-American. Drafted No. 3 in '51, though he had a year to go in school. Home town, Bremerton, Wash. Married. His daughter was born only a few hours after Heinrich led Giants to smashing 28-17 triumph over San Francisco in Seattle, in Heinrich's first appearance as a pro in his college town. Birthday, Sept. 19.

(Continued on Page 13)

Announcing

the **ONE** and **ONLY** thing **NEW** in TV!

a fabulous new invention from the Research Laboratories of Zenith—Radionic specialists for 37 years.

SPACE COMMAND Tuning

OPERATES YOUR ZENITH TV FROM ACROSS THE ROOM
NO WIRES! NO FLASHLIGHTS! NO CORDS!

IT'S MAGIC!

NOTHING BETWEEN YOU AND THE SET BUT SPACE

ONLY on the *fabulous* **NEW 1957**

ZENITH[®]

TV



Buying Hint!

The price is soon forgotten but quality stays with you . . . COMPARE ZENITH QUALITY TV

THE BROOKWOOD (Model Z3008)

YOU CAN HAVE ZENITH
SPACE COMMAND TUNING
FOR AS LITTLE AS **\$1.95** WEEKLY

- ... TURNS SET ON
- ... TURNS SET OFF
- ... CHANGES CHANNELS

... MUTES SOUND
WHILE PICTURE
REMAINS
ON SCREEN



**JUST HOLD THIS
COMMAND CONTROL BOX
IN YOUR HAND**

- ... Don't touch the receiver
- ... relax across the room
- ... and push a button

Take the Space-Command control box with you anywhere in the room. It answers your silent commands. Operates your Zenith TV without cords, wires, flashlights or radio control waves.

SPACE-COMMAND COSTS NO MORE than ordinary TV sets
... it's built right into the set—not an accessory

GERHARDS, Inc.

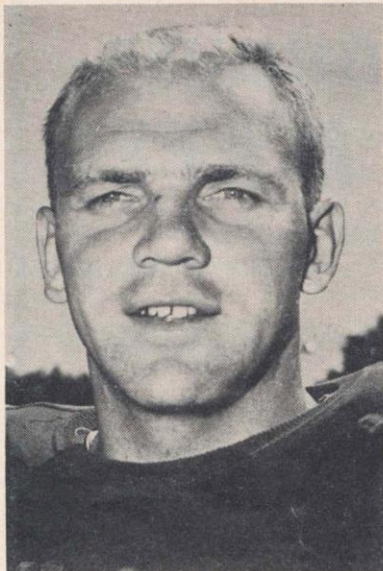
TELEVISION & AIR CONDITIONING EXPERTS
GLENSIDE, PA.
EASTON ROAD & KESWICK AVE.
OPEN MON., WED. & FRI. EVENINGS

LI 8-1171

TU 4
8650

Open Mon., Wed. & Fri.
Evenings

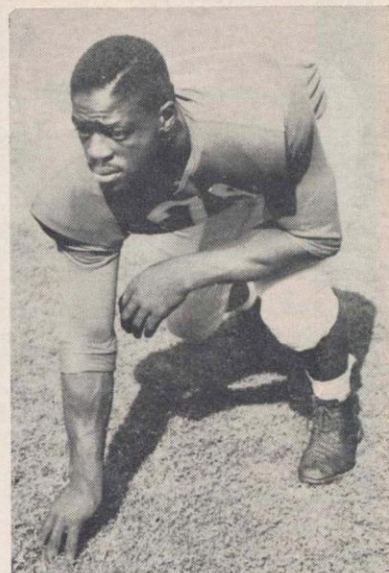
TODAY — WATCH THESE GIANTS IN ACTION!



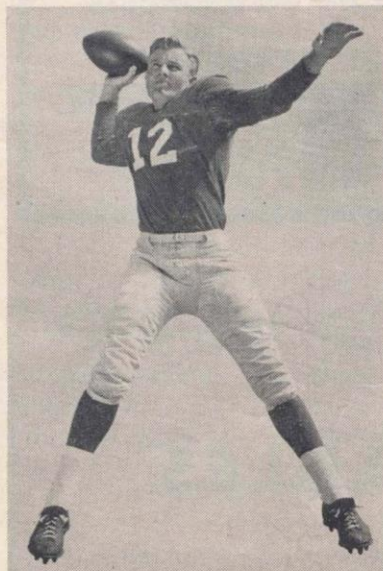
BILL AUSTIN, G



RAY BECK, G



ROOSEVELT BROWN, T



BOB CLATTERBUCK, QB

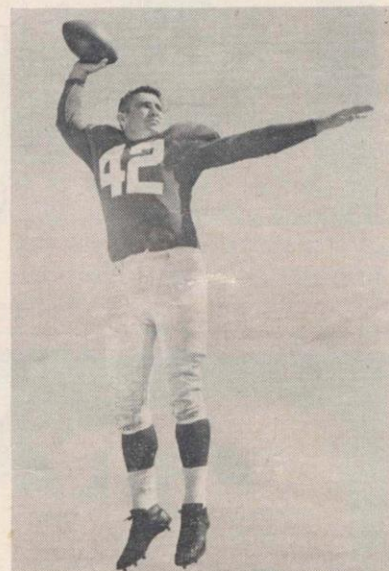
PUT THE
SQUEEZE



ON A



and enjoy a
fresh-tasting cigar



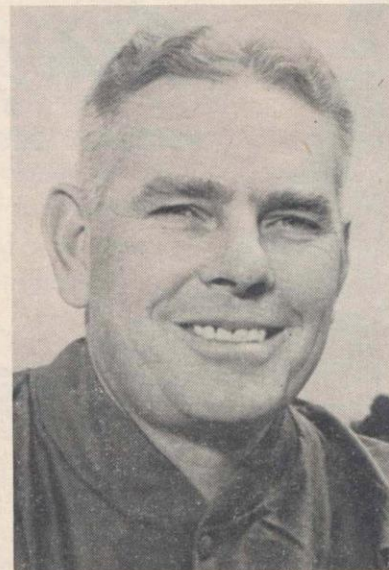
CHARLEY CONERLY, QB



FRANK GIFFORD, HB



DON HEINRICH, QB



JIM LEE HOWELL, COACH



WESTINGHOUSE SPACE MATES

DO LAUNDRY DOUBLE QUICK
... IN JUST 25 INCHES

- Wash below, dry above — two 8-lb. loads at the same time.
- Famous new way to wash with REVOLVING AGITATOR—without old fashioned center post agitator.
- Use less soap, less water, less electricity.
- Just one washing speed does every job safely and thoroughly.

ELECTRIC DRYER \$169⁹⁵

Both for Only
\$399⁹⁰

LAUNDROMAT \$229⁹⁵

Or Buy One Now —
Add the Mate Later

You Can Be Sure — If It's WESTINGHOUSE

DEE'S

2041 OREGON AVE.

WEST CHESTER PIKE & EAGLE ROAD—MANOA

3644-46 N. BROAD ST.

1633-35 RIDGE AVE.

1901-03 W. CHELTENHAM AVE.

OUTFITTERS OF PHILADELPHIA EAGLES

With

MacGregor

FOOTBALL EQUIPMENT — used by leading professional football and baseball teams and college and high school teams throughout the country.

MITCHELL & NESS

Distributors

1312 ARCH STREET

PHILADELPHIA

GIANTS BIOGRAPHIES

(Continued from Page 9)

JAMES KATCAVAGE—End

Katcavage was picked No. 4 in last winter's draft as a great defensive end prospect. A real crusher. Co-Captained the Flyers. Named to second All-American team of INS. Selected to East-West Shrine Game. Majored in Industrial Management. Home town, Philadelphia. Birthday, Oct. 28. Single.

KEN MacAFEE—End

MacAfee was a sensational rookie find two seasons ago when he scored eight touchdowns, converting exactly every fourth pass reception into a score. But hard luck dogged him in '55—first a back injury, then pneumonia. He caught only 11 passes, good for 170 yards and one touchdown. Extremely fast, he's the Giants' best deep threat. Good blocker on running plays. Home town, North Easton, Mass. Married, two children. Signed as a free agent while still in the Marines. Birthday, Aug. 3.

DICK MODZELEWSKI—Tackle

"Little Mo" made most of the All-American teams in 1952 at Maryland. Was obtained in the off-season by the Giants in an involved 4 team deal and figures to team with Grier as the defensive tackles. Extremely strong and quick. Married and has 1 son. Home town—Tarentum, Pa. Birthday, February 16.

ANDY ROBUSTELLI—End

Just as the training season opened, the Giants completed an important trade with the Los Angeles Rams which brings this popular Stamford, Conn. boy to his "home" city. Andy has been regular defensive end for the Rams for four seasons and an all Pro end in the bargain. He is expected to man a defensive wing for the Giants and apply the pressure for which he is noted on opposing passers. Home town—Stamford, Conn.

KYLE ROTE—Halfback

Rote, Giants' offensive captain, was the bonus choice of the '51 draft, and has been a star since. All-time leading pass catcher of Giants with 115 receptions for 1,879 yards. Played end as well as halfback in '55 when emergency developed at end due to injuries. Caught 31 passes for 576 yards and eight touchdowns. Twice scored on 71 yard jaunts. From halfback Rote gained 46 yards on 10 carries. Unanimous All-American at S.M.U. in

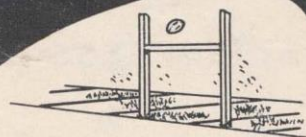
'50. Has interest in several off-season businesses in Texas. Lives in San Antonio with his wife and three sons. Birthday, Oct. 27.

BOB SCHNELKER—End

Schnelker was the Giants' third ranking pass receiver in '55, after having topped the list in '54, his first season with the Club. He caught 25, good for 325 yards in '55. Made three touchdowns, compared to eight the year before when he tied two Giant records (most touchdown passes, 3, and most points, 18, in a single game). Was only experienced end after Ken MacAfee was sidelined, and defenses ganged up on him. Best blocker among Giants' offensive ends. Played with Philadelphia in '53. Married and a father. Home town, Upper Sandusky, Ohio.

WALT YOWARSKY—End

Yowarsky is a five year veteran of the pro game who attained stardom as a defensive end with the Washington Redskins. Came to the Giants last season after playing briefly with the Detroit Lions. Quickly made himself a regular at defensive left end, solidifying what was to become a virtually immovable forward wall. Home town, Cleveland, Ohio.



Make the new Bellevue your after-game headquarters!

The most delicious food in town. Dinner and dancing in the spectacular new Stratford Garden. Centrally located in the heart of the city. Enjoy hospitality in the famous Bellevue tradition.

the new **Bellevue-Stratford**

Broad Street at Walnut
Philadelphia



For complete
banking and trust services

bank at

FIDELITY

FIDELITY-PHILADELPHIA TRUST COMPANY

Bankers since 1866

BROAD AND WALNUT STREETS

ADDITIONAL OFFICES THROUGHOUT THE GREATER PHILADELPHIA AREA

Member Federal Deposit Insurance Corporation

LETTERPRESS PRINTING *and* OFFSET LITHOGRAPHY

Smith-Edwards
COMPANY

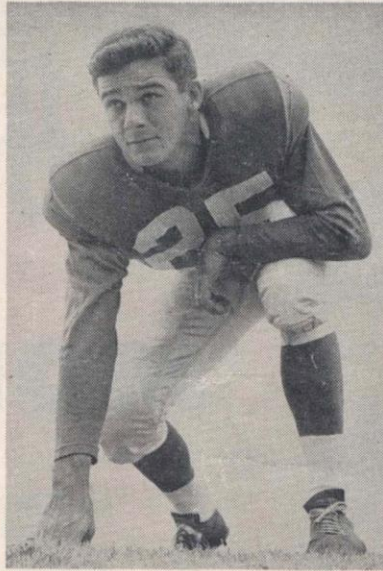
1413-21 VINE STREET • PHILADELPHIA 2, PA. • LO 7-1441

Printers for The Philadelphia Eagles

TODAY — WATCH THESE GIANTS IN ACTION!



KEN MacAFEE, E



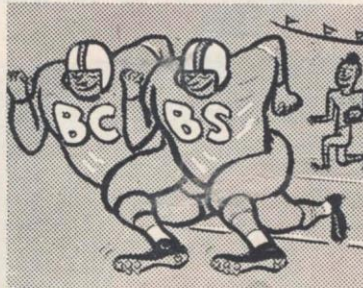
DICK NOLAN, HB



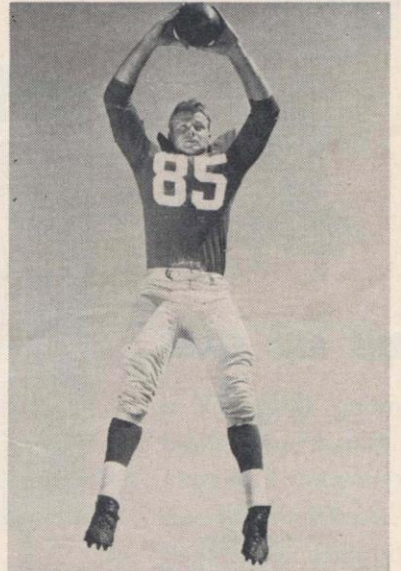
JIMMY PATTON, HB



KYLE ROTE, HB



Send for FREE
FOOTBALL MANUAL
 "How to Be a
 Grandstand Quarterback"
 by } Gene Kelly and
 Charles Tomasco
 For your copy, write Public Relations Dept.
BLUE CROSS
 112 S. 16th St., Philadelphia 2



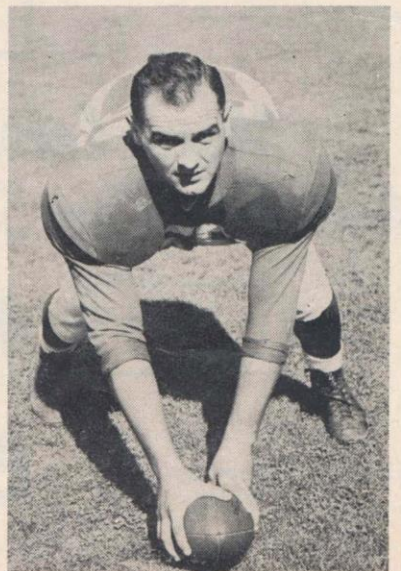
BOB SCHNELKER, E



EMLLEN TUNNEL, HB



ALEX WEBSTER, HB

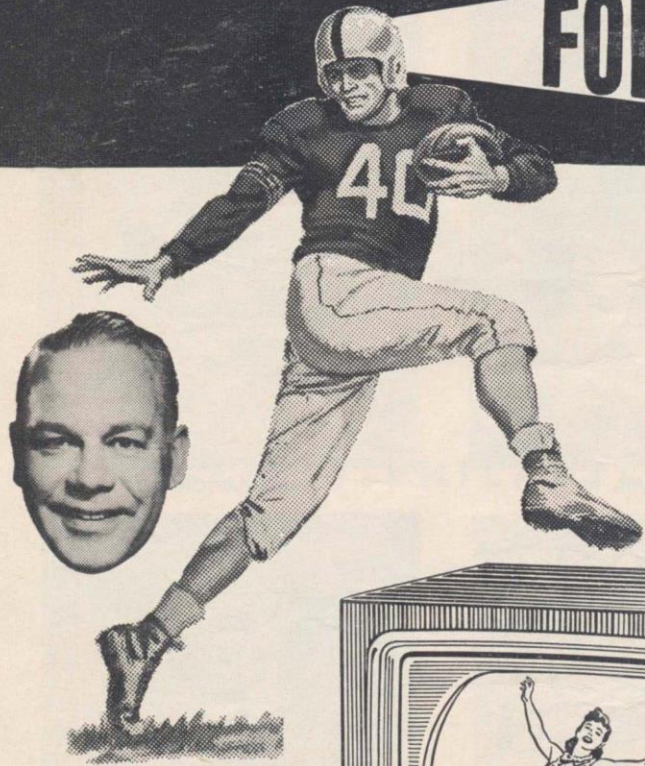


RAY WIETCHA, C

Follow The Leaders

FOR

COLOR TV



MORT FARR

AND **RCA VICTOR**

First in Black and White ★ First in Color



**BIG 21" RCA VICTOR
COLOR NOW ONLY**

\$495 3 YEARS
TO PAY

Less a Liberal Allowance for
Your Old TV Set

RCA Perfected 1957 color sets are now at the price of black and white! See the full line . . . twenty-one models . . . at Mort Farr, pioneer promoter of color TV. Enjoy color TV fully, backed by Mort Farr's skilled color TV service experts.

**ASK FOR
FREE HOME DEMONSTRATION**

TAVERNS AND CLUBS

are finding Color TV a real business attraction! More and more are coming to Mort Farr for sets and installation, backed by dependable, expert service.

***More Color Shows Than Ever Before
And You Can See Them in Your Living Room!***

SEE

MORT FARR

for the best in Color TV

69th Street below Chestnut

OPEN EVERY NITE 'TIL 10 P.M.

Phones: GR 6-6060
FL 2-3400

FARR Better Service
For Over 30 Years

When THE EAGLES Have The Ball

EAGLES OFFENSIVE DEPTH

Retzlaff (25)
Riley (22)
RIGHT HALFBACK



Bielski (36)
Schaefer (24)
FULLBACK



Berzinski (33)
Weger (46)
LEFT HALFBACK

Thomason (11)
Burk (10)
QUARTERBACK



Burnine (84)
Bredice (89)
Willey (86)
RIGHT END



Wydo (75)
Dimmick (65)
Lansford (79)
RIGHT TACKLE



Pellegrini (53)
D'Agostino (66)
RIGHT GUARD



Kelley (50)
Robinson (52)
Dimmick (65)
CENTER



Huxhold (63)
Lansford (79)
LEFT GUARD



Lansford (79)
Murley (68)
LEFT TACKLE



Walston (83)
Riley (22)
LEFT END



LEFT END
Yowarsky (78)
Katcavage (75)



LEFT TACKLE
Modzelewski (77)
Katcavage (75)



MIDDLE GUARD
Huff (70)
Svare (84)
Beck (61)



RIGHT TACKLE
Grier (76)
Brown (79)
Katcavage (75)



RIGHT END
Robustelli (81)
Katcavage (75)



LEFT HALFBACK
Hughes (48)
Patton (20)
Livingston (89)



LEFT LINEBACKER
Svoboda (30)
Livingston (89)

RIGHT LINEBACKER
Svare (84)
Livingston (89)



RIGHT HALFBACK
Nolan (25)
Patton (20)



LEFT SAFETY
Tunnell (45)
Patton (20)



RIGHT SAFETY
Patton (20)
Moore (22)

GIANTS DEFENSIVE DEPTH

WHEN THE GIANTS HAVE THE BALL, TURN TO PAGE 24

NOW!...local, live

C
O
L
O
R



CHANNEL

WRCV-



3

TV

A Service of RCA

EAGLES ROSTER

Head Coach: Hugh J. Devore

Assistants: Steve Owen, Ed Doherty, Charles Gauer, Frank Kilroy

No.	Name	Pos.	Ht.	Wt.	Age	College	Yr. in NFL
10	Burk, Adrian	QB	6'2	194	28	Baylor	7
11	Thomason, Bobby	QB	6'1	190	28	VMI	7
20	Bawel, Bibbles	HB	6'1	185	25	Evansville, Ind.	3
22	Riley, Lee	HB	6'0	200	24	Detroit	2
23	Keller, Ken	HB	5'11	185	22	North Carolina	1
24	Schaefer, Don	FB	6'0	210	22	Notre Dame	1
25	Retzlaff, Pete	HB	6'1	208	26	S. Dakota St.	1
33	Berzinski, Willis	HB	6'2	195	22	Wisconsin St.	1
36	Bielski, Dick	FB	6'0½	225	24	Maryland	2
40	Brookshier, Tom	HB	6'1	195	24	Colorado	2
45	Ryan, Rocky	HB	6'1	202	24	Illinois	1
46	Wegert, Ted	HB	5'11	210	24	No College	2
50	Kelley, Bob	C	6'2	238	26	W. Texas St.	2
52	Robinson, Wayne	LB	6'2	236	26	Minnesota	5
53	Pellegrini, Bob	G	6'2	237	21	Maryland	1
60	Bednarik, Chuck	LB	6'3	235	31	Pennsylvania	8
63	Huxhold, Ken	G	6'2	230	27	Wisconsin	3
64	Gibron, Abe	G	5'11	255	31	Purdue	7
65	Dimmick, Tom	T	6'6	250	25	Houston	1
66	D'Agostino, Frank	G	6'1	244	22	Auburn	1
68	Murley, Dick	G-T	6'0	247	23	Purdue	1
71	King, Don	T	6'3	274	27	Kentucky	2
72	Richardson, Jess	T	6'2	275	26	Alabama	4
73	Youngelman, Sid	T	6'3	255	24	Alabama	2
75	Wydo, Frank	T	6'4	228	32	Duquesne-Corn.	10
77	Weatherall, Jim	T	6'4	245	26	Oklahoma	2
78	Campbell, Marion	T	6'3	249	25	Georgia	3
79	Lansford, Buck	T	6'2	235	22	Texas	2
81	Bell, Eddie	HB	6'1	212	25	Pennsylvania	2
82	Scott, Tom	E	6'2	225	26	Virginia	4
83	Walston, Bobby	E	6'0	190	27	Georgia	6
84	Burnine, Hank	E	6'2	185	24	Missouri	1
89	Bredice, John	E	6'1	213	22	Boston U.	1

The official watch for timing this game is LONGINES
"the world's most honored watch"

Year after year
more people enjoy
Seagram's 7 Crown
than any other
whiskey in the
world



Sure proof that
Seagram's 7 Crown
is American whiskey
at its finest

Say **Seagram's**
and be **Sure**

SEAGRAM-DISTILLERS COMPANY, NEW YORK CITY
BLENDED WHISKEY. 86.8 PROOF. 65% GRAIN NEUTRAL SPIRITS.

Live **M**odern, Boy...Smoke **L&M**!



EAGLES

PROBABLE STARTING LINE-UP

No.	Name	Position
83	BOBBY WALSTON	LE
79	BUCK LANSFORD	LT
63	KEN HUXHOLD	LG
50	BOB KELLEY	C
53	BOB PELLEGRINI	RG
75	FRANK WYDO	RT
84	HANK BURNINE	RE
11	BOBBY THOMASON	QB
33	WILLIS BERZINSKI	LHB
25	PETE RETZLAFF	RHB
36	DICK BIELSKI	FB

THE EAGLE SQUAD

10	Burk, QB	46	Wegerf, HB	72	Richardson, T
11	Thomason, QB	50	Kelley, C	73	Youngelman, T
20	Bawel, HB	52	Robinson, LB	75	Wydo, T
22	Riley, HB	53	Pellegrini, LB	77	Weatherall, T
23	Keller, HB	60	Bednarik, LB	78	Campbell, T
24	Schaefer, FB-HB	63	Huxhold, G	79	Lansford, T
25	Retzlaff, HB	64	Gibron, G	81	Bell, E-HB
33	Berzinski, HB	65	Dimmick, G-LB	82	Scott, E
36	Bielski, FB	66	D'Agostino, G	83	Walston, E
40	Brookshier, HB	68	Murley, G-T	84	Burnine, E
45	Ryan, E-HB	71	King, T	89	Bredice, E

My Chesterfields *Satisfy* the Most!



GIANTS

PROBABLE STARTING LINE-UP

No.	Name	Position
44	KYLE ROTE	LE
79	ROOSEVELT BROWN	LT
60	BILL AUSTIN	LG
55	RAY WIETCHA	C
66	JACK STROUD	RG
72	DICK YELVINGTON	RT
80	KEN MacAFEE	RE
11	DON HEINRICH	QB
16	FRANK GIFFORD	LHB
29	ALEX WEBSTER	RHB
33	MEL TRIPLETT	FB

THE GIANT SQUAD

8	Agajanian, E.	40	Filipski, HB	70	Huff, T
11	Heinrich, QB	42	Conerly, QB	72	Yelvington, T
16	Gifford, HB	44	Rote, HB	75	Katcavage, E
20	Paffon, HB	45	Tunnell, HB	76	Grier, T
22	Moore, HB	48	Hughes, HB	77	Modzelewski, T
25	Nolan, HB	55	Wietcha, C	78	Yowarsky, T
29	Webster, HB	60	Austin, G	79	Brown, T
30	Svoboda, FB	61	Beck, G	80	MacAfee, E
33	Triplett, FB	62	Spinks, G	81	Robustelli, E
34	Chandler, HB	65	Huth, G	84	Svare, E
35	Epps, FB	66	Stroud, G	85	Schnelker, E
				89	Livingston, E

PAUSE ★ ★ ★

EAGLES FIVE YEAR RECORD vs 1956 HOME OPPONENTS

WASHINGTON REDSKINS

<i>Eagles</i>		<i>Opponent</i>
23	1951	27
35		21
38	1952	20
21		27
21	1953	21
0		10
49	1954	21
41		33
30	1955	31
21		34

CLEVELAND BROWNS

<i>Eagles</i>		<i>Opponent</i>
17	1951	20
9		24
7	1952	49
28		20
13	1953	37
42		27
28	1954	10
0		6
17	1955	21
33		17

PITTSBURGH STEELERS

<i>Eagles</i>		<i>Opponent</i>
34	1951	13
13		17
31	1952	25
26		21
35	1953	7
23		7
24	1954	22
7		17
7	1955	13
24		0

SAN FRANCISCO 49ers

<i>Eagles</i>		<i>Opponent</i>
21	1951	14
21	1953	31

NEW YORK GIANTS

<i>Eagles</i>		<i>Opponent</i>
24	1951	26
7		23
7	1952	31
14		10
30	1953	7
28		37
14	1954	27
29		14
27	1955	17
7		31

CHICAGO CARDINALS

<i>Eagles</i>		<i>Opponent</i>
17	1951	14
10	1952	7
22		28
56	1953	17
38		0
35	1954	16
30		14
24	1955	24
27		3

DRINK

Coca-Cola

REG. U.S. PAT. OFF.

COPYRIGHT 1956, THE COCA-COLA COMPANY

THE PHILADELPHIA COCA-COLA BOTTLING COMPANY

N. W. CORNER OF ERIE AVENUE & G. STREET, PHILADELPHIA 34, PENNSYLVANIA

GIANT ROSTER

Head Coach—Jim Lee Howell

Assistant Coaches—Vince Lombardi, Ed Kolman, Ken Kavanaugh, Tom Landry

No.	Name	Pos.	Ht.	Wt.	Age	College	Yr. in NFL
8	Agajanian, Ben	E	6'0	215	37	New Mexico	7
11	Heinrich, Don	QB	6'0	180	25	Washington	3
16	Gifford, Frank	HB	6'1	205	26	U. S. C.	5
20	Paffon, Jim	HB	5'11	180	24	Mississippi	2
22	Moore, Henry	HB	6'1	195	22	Arkansas	1
25	Nolan, Dick	HB	6'1	185	24	Maryland	3
29	Webster, Alex	HB	6'3	210	25	North Carolina Sf.	2
30	Svoboda, Bill	FB	6'1	210	27	Tulane	7
33	Triplett, Mel	FB	6'1	215	24	Toledo	2
34	Chandler, Don	HB	6'2	205	21	Florida	1
35	Epps, Bobby	FB	5'8	200	24	Pittsburgh	3
40	Filipski, Gene	HB	5'10	185	25	Villanova	1
42	Conerly, Charley	QB	6'1	195	32	Mississippi	9
44	Rote, Kyle	HB	6'0	205	28	S. M. U.	6
45	Tunnell, Em	HB	6'1	200	31	Iowa	9
48	Hughes, Ed	HB	6'1	180	24	Tulsa	3
55	Wietecha, Ray	C	6'1	225	27	Northwestern	4
60	Austin, Bill	G	6'1	225	27	Oregon State	6
61	Beck, Ray	G	6'2	225	24	Georgia Tech	3
62	Spinks, Jack	G	6'1	240	26	Alcorn A. and M.	4
65	Huth, Gerald	G	6'0	210	23	Wake Forest	1
66	Stroud, Jack	G	6'1	230	27	Tennessee	4
70	Huff, Sam	T	6'1	230	21	West Virginia	1
72	Yelvington, Dick	T	6'2	235	27	Georgia	5
75	Katcavage, Jim	E	6'3	225	21	Dayton	1
76	Grier, Roosevelt	T	6'5	275	23	Penn State	2
77	Modzelewski, Dick	T	6'0	260	25	Maryland	4
78	Yowarsky, Walt	T	6'2	235	28	Kentucky	5
79	Brown, Roosevelt	T	6'3	245	24	Morgan State	4
80	MacAfee, Ken	E	6'2	205	27	Alabama	3
81	Robustelli, Andy	E	6'1	230	28	Arnold	6
84	Svare, Harland	E	6'0	215	25	Washington State	4
85	Schnelker, Bob	E	6'4	215	26	Bowling Green	4
89	Livingston, Cliff	E	6'3	215	25	U. C. L. A.	3

The official watch for timing this game is LONGINES
"the world's most honored watch"

NOW!...local, live

CO
LO
OR



CHANNEL























WRCV-TV



A Service of RCA

When THE GIANTS Have The Ball

GIANTS OFFENSIVE DEPTH

						
				Triplet (33) Epps (35)		
				FULLBACK		
Webster (29) Rote (44) Chandler (34)						Gifford (16) Filipski (40) Rote (44)
RIGHT HALFBACK						LEFT HALFBACK
		Heinrich (11) Conerly (42) Clatterbuck (12)				
		QUARTERBACK				
MacAfee (80) Rote (44)	Yelvington (72) Stroud (66) Katcavage (75)	Stroud (66) Huth (65)	Wietecha (55) Yowarsky (78)	Huth (65) Austin (60) Beck (61)	Brown (79) Stroud (66)	Rote (44) Schnelker (85)
RIGHT END	RIGHT TACKLE	RIGHT GUARD	CENTER	LEFT GUARD	LEFT TACKLE	LEFT END
						
						
LE & LB	TACKLE	TACKLE	TACKLE	TACKLE	RE & LB	
Scott (82) Pellegrini (53)	Weatherall (77) Scott (82) Wydo (75)	Richardson (72) Weatherall (77)	Campbell (78) Youngelman (73)	King (71) Wydo (75)	Youngelman (73) Bednarik (60) Dimmick (65)	
				LINEBACKER		
				Bednarik (60) Robinson (52) Dimmick (65)		
	LEFT HALFBACK				RIGHT HALFBACK	
	Bell (81) Ryan (45)				Riley (22) Ryan (45)	
	LEFT SAFETY				RIGHT SAFETY	
	Ryan (45) Riley (22) Bell (81)				Riley (22) Bawel (20) Brookshier (40)	

EAGLES DEFENSIVE DEPTH

WHEN THE EAGLES HAVE THE BALL, TURN TO PAGE 17

SPECIALISTS—KICKOFFS: Bielski, 36; Walston, 83. PAT: Walston, 83. FIELD GOALS: Bielski, 36; Walston, 83. PUNTING: Burk, 10.

Enjoy it tonight!



Calvert

RESERVE


Nothing finer in American taste

CALVERT DISTILLERS CO., N.Y.C. • AMERICAN BLENDED WHISKEY • 86.8 PROOF • 65% GRAIN NEUTRAL SPIRITS

"The Mud is always cleaner on the other side of the Goal Post"



Don Schaefer (24) is happy to hit the mud for a TD in the first quarter of the opening game against the Redskins, October 6.



World Famous for Seafood Since 1865!

OLD ORIGINAL BOOKBINDER'S

125 WALNUT STREET • Philadelphia

NFL 1956 SCHEDULE -

TRIPLE THREAT

Cities Service Brings Better Performance, value, and Service to Every Car Owner with . . .

3 NEW Trail Blazing Gasolenes

New 100 Octane Plus
for Ultra-high Compression Motors

New Super 5-D
for High Compression Motors

New Milemaster
for Standard Compression Motors

Try a Tankful
at your
Cities Service
Dealer's

CITIES SERVICE

STANDINGS

Eastern Division				Western Division					
W	L	T	Pct.	W	L	T	Pct.		
New York	7	3	1	.700	Detroit	9	2	0	.818
Washington	6	4	0	.600	Chi. Bears	8	2	1	.800
Chi. Cards	6	5	0	.545	Baltimore	4	6	0	.400
Cleveland	5	6	0	.455	San. Fran.	4	6	1	.400
Pittsburgh	4	7	0	.364	Green Bay	4	7	0	.364
EAGLES	3	7	1	.300	Los Angeles	3	8	0	.273

SUNDAY, SEPTEMBER 30

Los Angeles 27	EAGLES	7
Baltimore 28	Chicago Bears	21
Chicago Cards 9	Cleveland	7
Detroit 20	Green Bay	16
New York 38	San Francisco	21
Pittsburgh 30	Washington	13

SATURDAY, OCTOBER 6 (Night)

EAGLES 13	Washington	9
Detroit 31	Baltimore	14
Cleveland 14	Pittsburgh	10

SUNDAY, OCTOBER 7

Chicago Bears 37	Green Bay	21
Chicago Cardinals 35	New York	27
San Francisco 33	Los Angeles	30

SUNDAY, OCTOBER 14

EAGLES 35	Pittsburgh	21
New York 21	Cleveland	9
Chicago Cards 31	Washington	3
Chicago Bears 31	San Francisco	7
Green Bay 38	Baltimore	33
Detroit 24	Los Angeles	21

SUNDAY, OCTOBER 21

Chicago Cards 20	EAGLES	6
Chicago Bears 58	Baltimore	27
Washington 20	Cleveland	9
Green Bay 42	Los Angeles	17
New York 38	Pittsburgh	10
Detroit 20	San Francisco	17

SUNDAY, OCTOBER 28

New York 20	EAGLES	3
Chicago Bears 38	San Francisco	21
Detroit 16	Los Angeles	7
Baltimore 28	Green Bay	21
Pittsburgh 24	Cleveland	16
Washington 17	Chicago Cards	14

SUNDAY, NOVEMBER 4

Chicago Cards 28	EAGLES	17
Chicago Bears 35	Los Angeles	24
Cleveland 24	Green Bay	7
Detroit 17	San Francisco	13
New York 17	Pittsburgh	14

RESULTS — STANDINGS

SUNDAY, NOVEMBER 11

EAGLES 14	Pittsburgh	7
Baltimore 21	Cleveland	7
New York 23	Chicago Cards	10
Washington 18	Detroit	17
Chicago Bears 38	Green Bay	14
Los Angeles 30	San Francisco	6

SUNDAY, NOVEMBER 18

CLEVELAND 16	EAGLES	0
Detroit 27	Baltimore	3
Pittsburgh 14	Chicago Cards	7
Chicago Bears 30	Los Angeles	21
Washington 33	New York	7
San Francisco 17	Green Bay	16

THURSDAY, NOVEMBER 22 (Thanksgiving)

Green Bay 24	Detroit	20
--------------	-------	---------	----

SUNDAY, NOVEMBER 25

San Francisco 10	EAGLES	10
Chicago Bears 17	New York	17
Baltimore 56	Los Angeles	21
Chicago Cards 38	Pittsburgh	27
Washington 20	Cleveland	17

SUNDAY, DECEMBER 2

Cleveland 17	EAGLES	14
Detroit 42	Chicago Bears	10
Green Bay 24	Chicago Cards	21
Pittsburgh 30	Los Angeles	13
San Francisco 20	Baltimore	17
New York 28	Washington	14

SATURDAY, DECEMBER 8 (Night)

San Francisco 38	Green Bay	20
------------------	-------	-----------	----

SUNDAY, DECEMBER 9

Washington 19	EAGLES	17
Los Angeles 31	Baltimore	7
Chicago Bears 10	Chicago Cards	3
Cleveland 24	New York	7
Detroit 45	Pittsburgh	7

SATURDAY, DECEMBER 15 (Afternoon)

NEW YORK AT EAGLES

SUNDAY, DECEMBER 16

Baltimore at San Francisco
Chicago Cards at Cleveland
Detroit at Chicago Bears
Green Bay at Los Angeles
Pittsburgh at Washington

SUNDAY, DECEMBER 23

Washington at Baltimore

SUNDAY, DECEMBER 30

WORLD'S CHAMPIONSHIP PLAYOFF
IN HOME CITY OF EASTERN CONFERENCE CHAMPION.

TRADITIONALLY

the Discriminating choose
The Warwick for their
before and after the
game huddle.

Warwick Room
Embassy Room
Coach Room

The Warwick

LOCUST at SEVENTEENTH • Pennypacker 5-3800

HAUGHTON WEYMOUTH & BISHOP,
Inc.

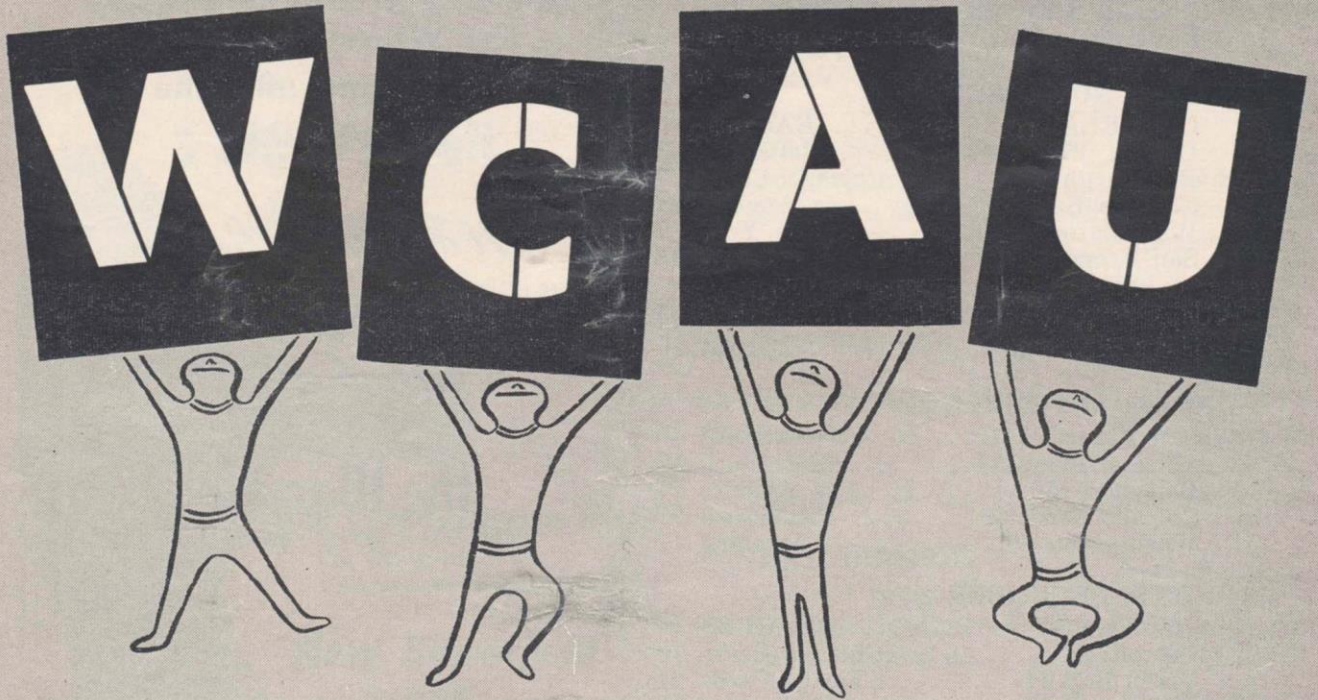
INSURANCE BROKERS
FOR THE EAGLES

BACKED BY 23 YEARS EXPERIENCE

Fidelity-Philadelphia Trust Building
Philadelphia 9, Pa.

PE 5-4524

first with football in Philadelphia!



RADIO

**ALL UNIVERSITY
OF PENNSYLVANIA
AND
EAGLES
GAMES**

TELEVISION

**CBS
PRO FOOTBALL
INCLUDING
ALL EAGLES
AWAY GAMES**

EAGLES

presented by
**ATLANTIC REFINING COMPANY
MARBORO CIGARETTES
NATIONAL BOHEMIAN BEER**

PENNSYLVANIA

presented by
**THE BUDD COMPANY
GENERAL COPPER AND BRASS CO.
HARLEYSVILLE INSURANCE COS.**

PRO FOOTBALL PREVIEW - WCAU-TV CHANNEL 10

presented by **LIBERTY MUTUAL INSURANCE COMPANIES**

"LET'S GO PHILADELPHIA"

HYGIENIC SANITATION CO.

Philadelphia, Harrisburg, Johnstown, Altoona and Pittsburgh, Pa.;
Washington, D. C.; Baltimore, Cumberland, and Salisbury, Maryland;
Rochester and Olean, N. Y.; Louisville, Ky.;
Camden and Trenton, N. J.

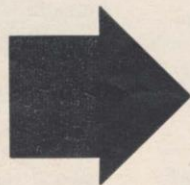
LARGEST EXTERMINATING ORGANIZATION IN THE EAST

EAGLES COACHING STAFF



L. to R.: Charles Gauer, Assistant Coach; Hugh Devore, Head Coach; Steve Owen, Assistant Coach; and Frank Kilroy, Assistant Coach.

TRAVEL WITH DISTINCTION AND COMFORT



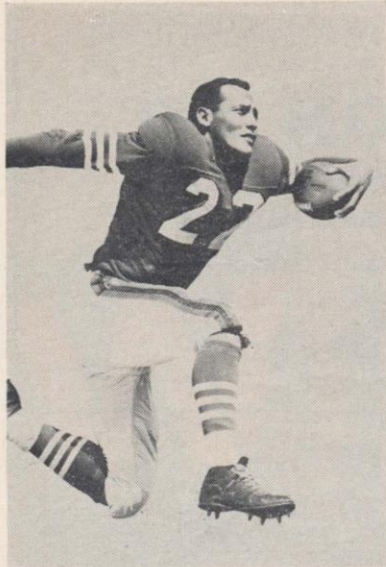
GO BY YELLOW

TAXICABS • LIMOUSINES • CABULANCE • AIRPORT SERVICE

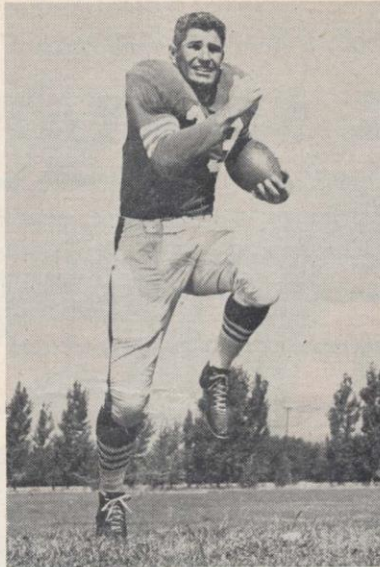
YELLOW CAB COMPANY OF PHILADELPHIA • WAlnut 2-8400

YELLOW LIMOUSINE SERVICE, INC. • WAlnut 2-8440

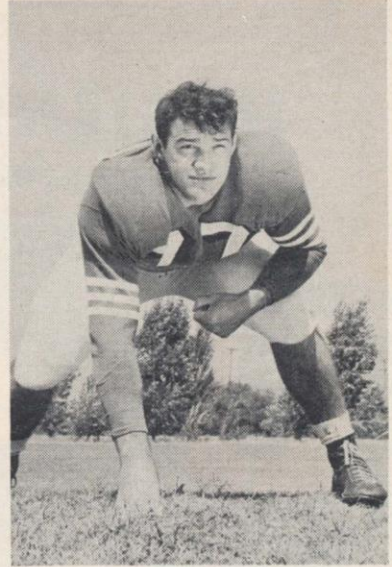
PICTORIAL REVIEW — SAN FRANCISCO 49ers



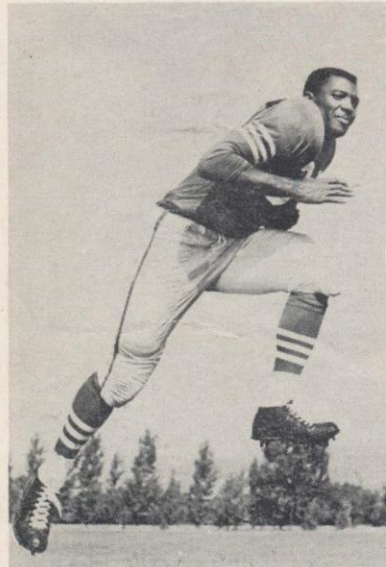
JOE ARENAS, HB



REX BERRY, HB



BRUCE BOSLEY, T



JOHN HENRY JOHNSON, HB

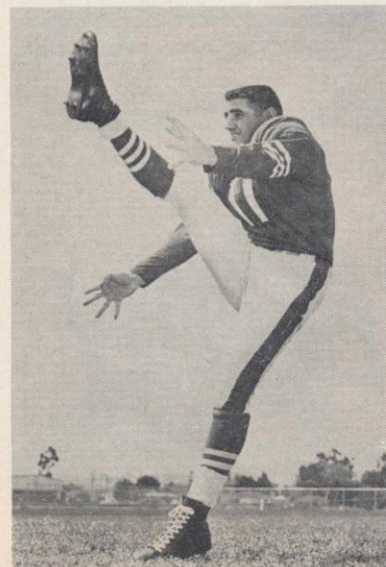
Exide
BATTERIES
for
EVERY
BATTERY
PURPOSE

•

THE ELECTRIC STORAGE BATTERY CO.
P.O. Box 8109 Phila. 1, Pa.



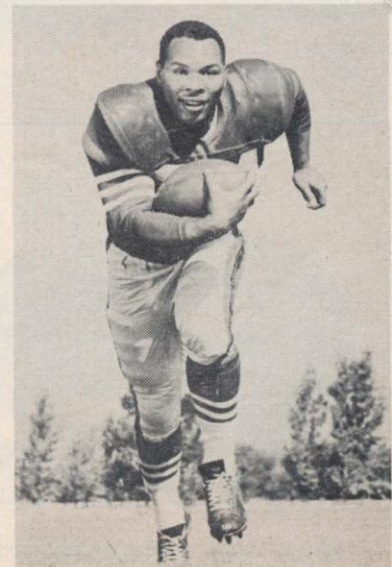
HUGH McELHENRY, HB



EARL MORRALL, QB



LEO NOMELLINI, T



JOE PERRY, FB

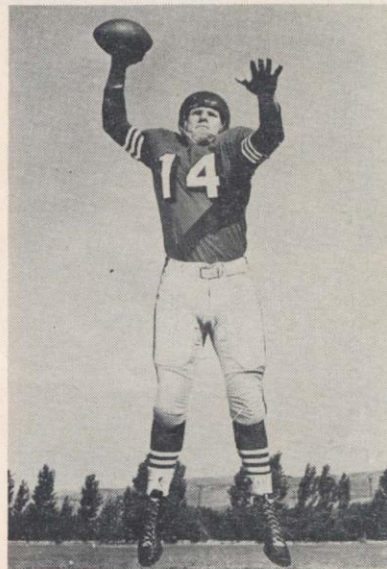
PICTORIAL REVIEW — SAN FRANCISCO 49ers



GORDY SOLTAU, E



BOB. ST. CLAIR, T



Y. A. TITTLE, QB



BOB TONEFF, T

Get a
YALE-
For the Lift of
Your Life!

YALE
Industrial Lift Trucks
Gas, Electric, Diesel and LP Gas
Worksavers, Warehouse & Hand
The Yale & Towne Manufacturing Co.
4221 N. BROAD ST., PHILA. 40, PA.
Phone: GLadstone 5-6000



BILLY WILSON, E



49er COACHING STAFF: (Left to Right) BILL JOHNSON, MARK DUNCAN, FRANK ALBERT, JOE VETRANO, RED HICKEY, PHIL BENGTON

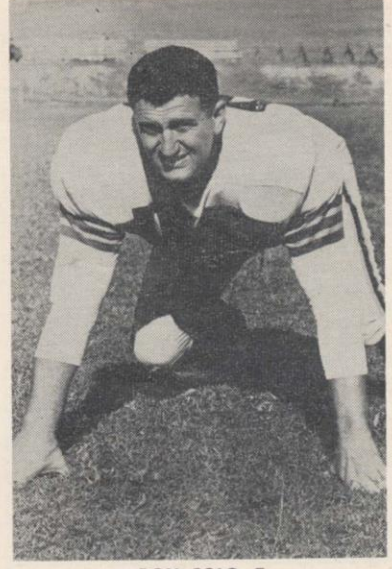
PICTORIAL REVIEW — CLEVELAND BROWNS



MAURICE BASSETT, FB



DARRELL BREWSTER, E



DON COLO, T



LEN FORD, E



JOHN KISSELL, T



BOB GAIN, T



FRANK GATSKI, C



LOU GROZA, T

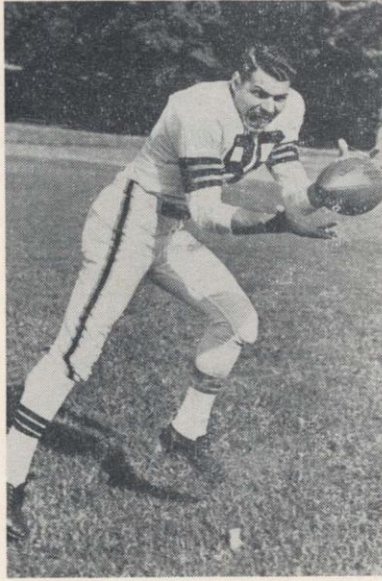


KEN KONZ, HB

PICTORIAL REVIEW — CLEVELAND BROWNS



WARREN LAHR, HB



DANTE LAVELLI, E



MIKE McCORMACK, T



WALT MICHAELS, FB



HERSCHEL FORESTER, G



ED MODZELEWSKI, FB



VITO PARILLI, QB



GEORGE RATTERMAN, QB



RAY RENFRO, HB

PICTORIAL REVIEW — PITTSBURGH STEELERS



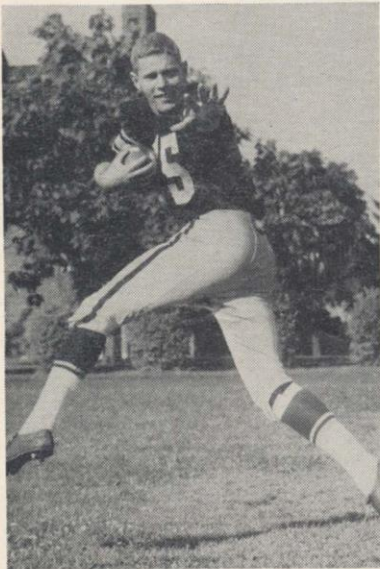
JACK BUTLER, E



JOHN CENCI, C-LB



LYNN CHANDNOIS, HB

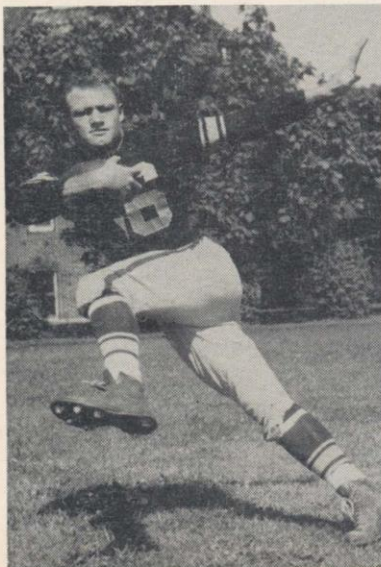


ART DAVIS, HB

*You can't fumble
when you open a
SAVINGS ACCOUNT at*
**PUBLIC
FEDERAL SAVINGS**
N. E. Corner
7th and Chestnut Sts.
Insured to \$10,000.00
3% RETURN
ED POLLOCK, Chairman
WM. J. McKEEVER, President



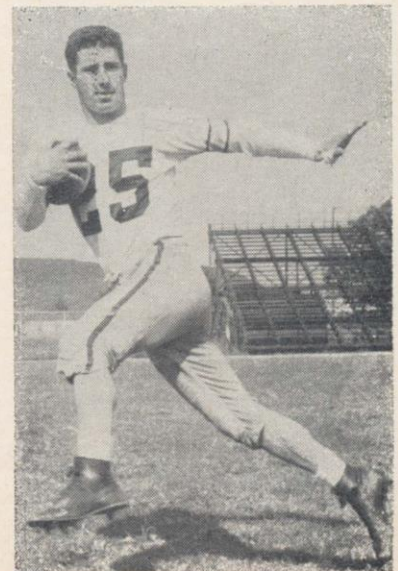
DALE DODRILL, G



GARY GLICK, QB



BOB GOANA, G

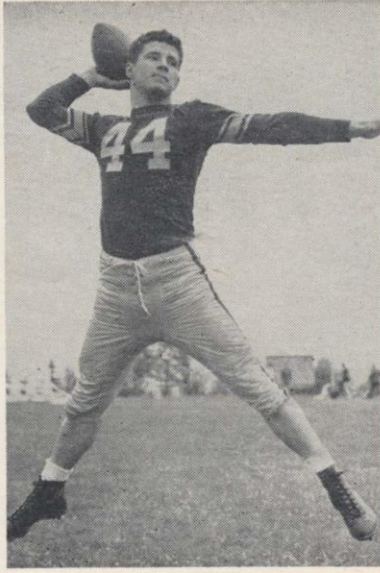


RAY MATHEWS, HB

PICTORIAL REVIEW — PITTSBURGH STEELERS



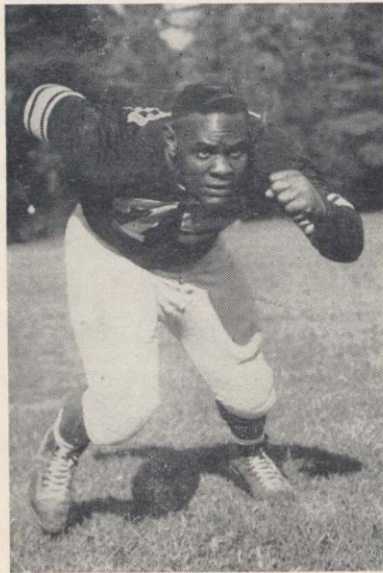
TED MARCHIBRODA, QB



RAY MATHEWS, E



MARV MATUSZAK, E-LB



WILLIE McCLUNG, G

FELIN'S
ALL MEAT
HOT DOGS

CHEESEFURTERS
Ask for them at your
favorite food store.

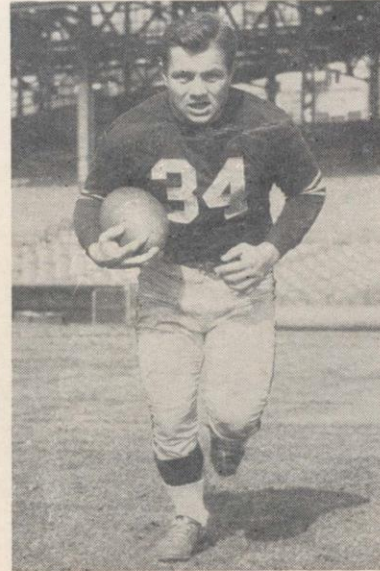
MORRELL - FELIN CO.
4142 N. Germantown Ave.
Philadelphia 40, Pa.
A Full Line of Meats



BILL McPEAK, E



ELBIE NICKEL, E



FRAN ROGEL, FB



ERNIE STAUTNER, T

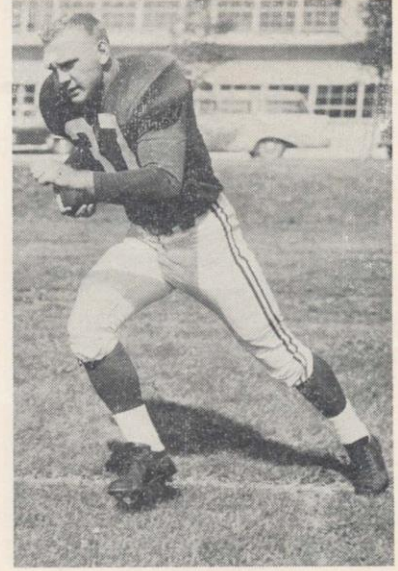
PICTORIAL REVIEW — CHICAGO CARDINALS



FRANK BERNARDI, HB



MAX BOYDSTON, E



JOE CHILDRESS, FB

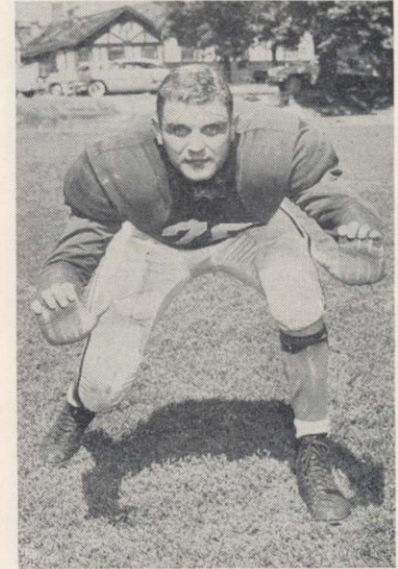


DOUG HOGLAND, G

**EDGCOMB
STEEL
COMPANY**

PHILADELPHIA

STEEL ———
ALUMINUM
——— BRASS



JACK JENNINGS, T



DICK LANE, HB

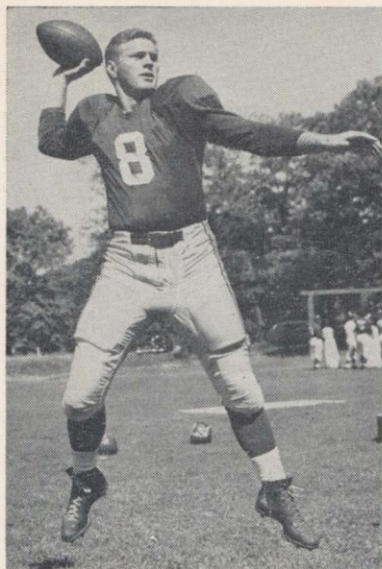


DAVE MANN, HB

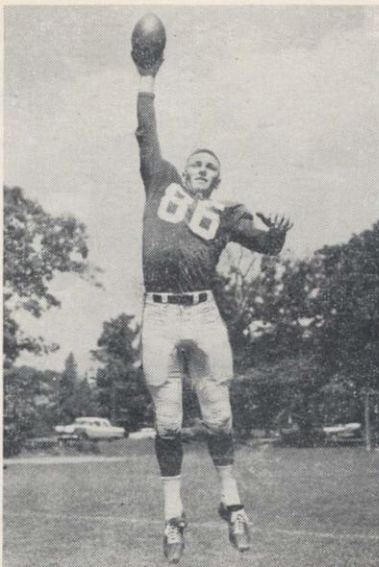


OLLIE MATSON, HB

PICTORIAL REVIEW — CHICAGO CARDINALS



LAMAR McHAN, QB



GERN NAGLER, E



JOHNNY OLSZEWSKI, FB



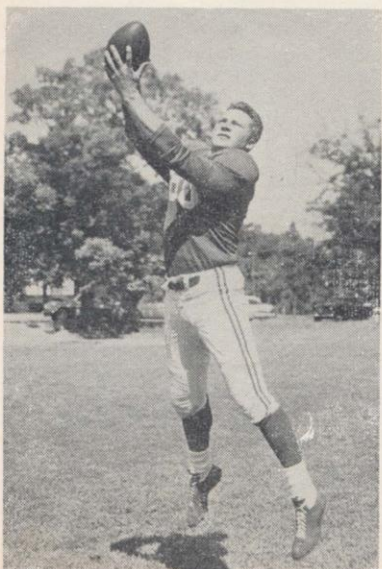
LEO SANFORD, C

EAGLES NEST ON WPFH

The Eagles Nest, an entertaining and informative show that takes you behind the scenes of professional football, will be seen every Tuesday night starting at 9:30 P.M. over TV Station WPFH, Channel 12. Bosh Pritchard will emcee the weekly show with Head Coach Hugh Devore as his guest. Members of the Eagles' squad and others well known in pro football will be guests on the different shows. The Interstate Loan Co. is sponsoring the Eagles Nest. The Pro-Highlights will be shown every Tuesday night at 7:30 P.M. over Channel 12—Station WPFH.



JACK SIMMONS, C



DON STONESIFER, E



LEN TEEUWS, T

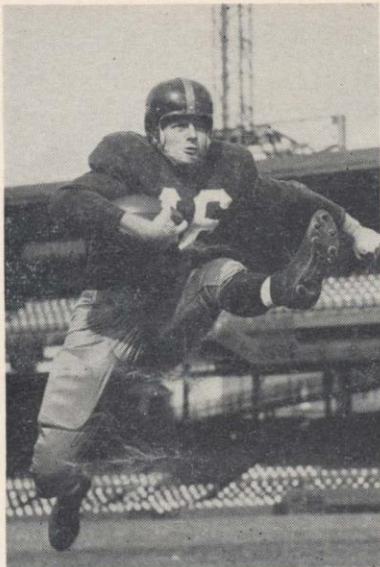


CHUCK ULRICH, T

PICTORIAL REVIEW — WASHINGTON REDSKINS



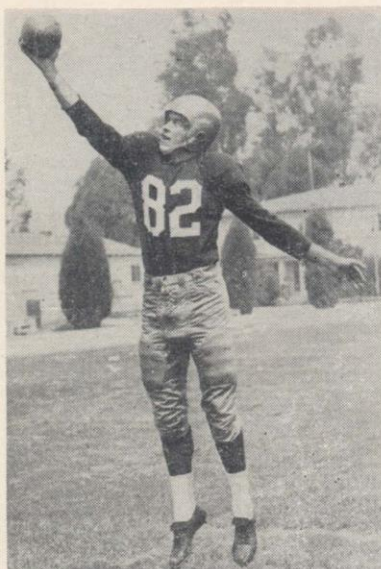
JOHN ALLEN, C



DALE ATKESON, FB



GENE BRITO, E



JOHN CARSON, E

**Need Money?
How Much?**

You name it—from
\$100 up. Any of our 29
offices will serve
you quickly, courteously.

**The First
Pennsylvania
Banking and Trust
Company**

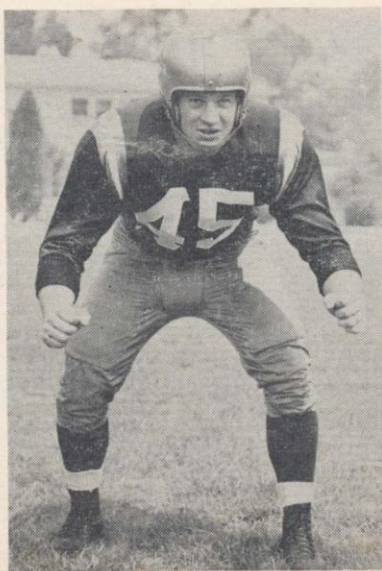
Banking since 1782
Member • Federal Reserve System
Federal Deposit Insurance Corporation



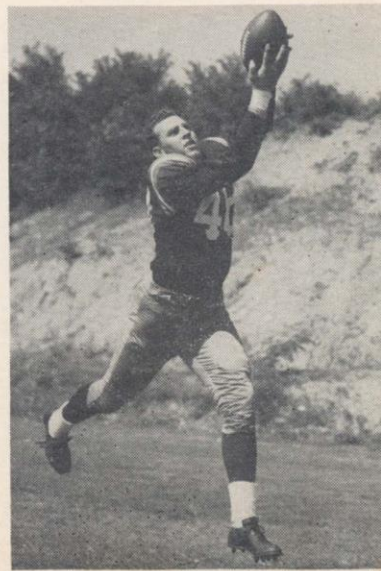
CHUCK DRAZENOVIK, FB



LEO ELTER, FB



RALPH FELTON, FB



NORB HECKER, B-E

PICTORIAL REVIEW — WASHINGTON REDSKINS



J. D. KIMMEL, T



EDDIE LeBARON, QB



CHET OSTROWSKI, E



VOLNEY PETERS, T

IN PHILA.
THE SWING IS TO
AMOROSO'S
ITALIAN
BREAD - ROLLS

In the Ball Park
try a
HOAGIE
on
AMOROSO'S
ROLL



JOE SCUDERO, HB



DICK STANFEL, G



RED STEPHENS, G



TORGY TORGESON, C

OFFICIAL FOOTBALL SIGNALS



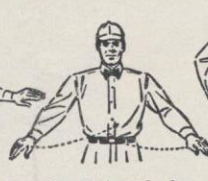
Offside or Free Kick Violation
Hands on hips
ENCROACHMENT—Same signal followed by placing one hand on top of cap.



Crawling, Pushing or Helping Runner
Pushing movement of hands to front with arms downward.



Unsportsmanlike Conduct
Arms outstretched, palms down.
(Same signal means continuing action fouls are disregarded.)



Penalty Refused, Incomplete Pass, Play Over, or Missed Goal
Sifting of hands in horizontal plane.



Safety
Palms together over head.



Illegal Motion At Snap
Horizontal arc with either hand.



First Down
Arm raised, then pointed toward defensive team's goal.



Holding
Grasping of one wrist.
Illegal Use of Hands or Arms
Holding Signal followed by Interference Signal.



Touchdown, Field Goal or Successful Try
Both arms extended above head.



Dead Ball or Neutral Zone Established
One arm aloft, open hand
(With fist closed—Fourth Down)



Delay of Game or Excess Time-Out
Folded Arms.
Illegal Formation—Same signal followed by over and over rotation of fore-arms in front of body.



No Time-Out or Time-in with Whistle
Full arm circles to simulate winding clock.

ROSTER OF OFFICIALS 1956 NATIONAL FOOTBALL LEAGUE

No.	Name	College
44	Austin, Robert	St. Ambrose
17	Beiersdorfer, James	None
31	Berry, Charles	Lafayette
23	Brubaker, Harry	Loyola (L. A.)
39	Castree, Gilbert	Virginia
57	Connell, Joseph	Pittsburgh
45	Cooperman, Samuel	Muhlenberg
50	Crowe, James	Indiana
11	Crowley, Joseph	Muhlenberg
37	Diehl, Cleo N.	Northwestern
4	Dowd, Thomas	Holy Cross
3	Downes, William	Illinois Tech
42	Duncan, Norman	U.C.L.A.
12	Gardner, Cletus	Villanova
10	Giangreco, Samuel	Manhattan
5	Gibbs, Ronald	St. Thomas
7	Glascott, John	Pennsylvania
54	Gonzales, Joseph	U.S.C.
27	Grimberg, William	Villanova
49	Hamer, James	California State Teachers
9	Heintz, Emil	Pennsylvania
48	Highberger, John	Carnegie Tech
58	Hutchison, Elvin	U.S.C.
29	Jaworowski, Stanley	Georgetown
38	Kane, James	Loyola (Md.)
33	Knight, Warren	Carnegie Tech
16	Lisetski, Michael	Muhlenberg
59	Looney, Don	T.C.U.
28	McHugh, William	De Paul
43	Muha, Joseph	V.M.I.
55	Pace, John	Illinois
51	Palazzi, Louis	Penn State
52	Rennix, George	Minnesota
56	Schachter, Norman	Alfred
22	Sweeney, Charles	Notre Dame
36	Tehan, Daniel	Xavier (Ohio)
24	Terremere, Albert	Santa Clara
35	Timlin, Thomas	Niagara
25	Tracy, John	Xavier (Ohio)
40	Underhill, James	St. Mary's (Calif.)
34	Wallace, Yans	None
53	Wiesenbaugh, Henry	Pittsburgh
19	Wilson, Samuel M.	Lehigh

OFFICIALS FOR TODAY'S GAME

- Referee: John Pace, Illinois
- Umpire: James Crowe, Indiana
- Head Linesman: Daniel Tehan, Xavier
- Back Judge: Yans Wallace
- Field Judge: Charles Sweeney, Notre Dame



Illegal Forward Pass
Waving hands behind back.
Intentional Grounding of Pass—Same as above followed by raised hand fung downward.



Interference with Fair Catch or Forward Pass
Pushing hands forward from shoulder with hands vertical.



Loss of Down
(Follows signal for foul)
Tapping both shoulders with finger tips.



Personal Foul
Striking one wrist above head
Clipping—Striking back of knee with hand.
Running into or Roughing the Kicker—Swinging leg.
Running into passer—Raised arm swung forward.
Tripping—Hooking foot behind opposite ankle.



Time-Out
Hands criss-crossed over head.
Touchback
Time-Out Signal—followed by arm swung at side.

Light up a Lucky—

it's light-up time!



Luckies Taste Better

Cleaner, Fresher, Smoother!



**"IT'S
TOASTED"
to taste
better!**



Double-Barreled Pleasure!



For the taste of your life
... "Go First Class"
with Miller High Life!

THE CHAMPAGNE OF BOTTLE BEER

