

NEW YORK GIANTS VS. CHICAGO BEARS

GILMORE STADIUM
SUNDAY **27th**
JANUARY

OFFICIAL
PROGRAM

15¢



AUSPICES LOS ANGELES COUNTY
COUNCIL AMERICAN LEGION

« « WHERE THE MONEY GOES

BY DON CLAFLIN

Director American Legion Service Department



The profits which accrue to the Los Angeles County Council of the American Legion as a result of its football games are used for medical and legal services necessary to disabled men in connection with the prosecution of their claims for disability compensation and hospitalization, and for emergency relief such as food, clothing, etc., pending the adjustment of their claims against the Government. Other uses to which the money is directed consist of the Christmas basket and Christmas gift program of the American Legion for the men who are in hospital at that time of the year, and for their families who are anxiously awaiting their return to health and work. A small portion of the money is used to carry on the expense of an entertainment program throughout the year for the men in Government hospitals.

This work is carried on through the American Legion Service Department, an office organized in 1923 for that purpose by the Los Angeles County Council. Here well-trained social workers and persons expert in veterans' laws are available to all veterans of the World War who are disabled and in need of help. Eleven peo-

ple put in their full time in this work throughout the year. This office is partially supported by the Los Angeles Community Chest, but the American Legion feels that its request for funds from the Community Chest should be kept at the lowest possible figure and that money raised without solicitation of the public through football games, Fourth of July celebrations, etc., tends to increase the amount of work possible and to relieve the Community Chest just that much. All of the services rendered are available to World War veterans regardless of membership in the American Legion, and by far the greater portion of those we help have never belonged to our organization. The amount expended through this office varies of course with business conditions and with the amount of money available to the Legion for the purpose. Over the past ten years the amount has been between \$40,000.00 and \$50,000.00 per annum.

When you patronize one of our football games or attend our July Fourth celebration held each year in the Coliseum, you not only get value received in entertainment, but you make it possible for us to aid men who would otherwise experience great difficulty.

AMERICAN LEGION SERVICE DEPARTMENT
LOS ANGELES COUNTY COUNCIL



C. J. TURNER
 Chairman Ways and Means
 Committee
 Los Angeles County Council



JAMES S. HOWIE
 Commander Los Angeles County
 Council American Legion
 152 Posts—25,000 Members



HARRY MYERS
 Secretary of Ways and Means
 Committee
 Director of Promotion

WAYS AND MEANS COMMITTEE

Legal Advisor	Alex. Davis
17th District	Leon McCardle
18th District	Stanley Wood
19th District	Steve Cope
20th District	Van Bishop
23rd District	Roy Stockton
24th District	Willis J. Hamrick

PUBLICITY

Matt Galagher	Newspaper
W. H. "Reg" Regelin	Program
Morley Drury	Public Address

BAND

Police Post American Legion.....Director, Harry Signor

DRUM CORPS

Ben Bowie Post American Legion

**4TH OF JULY FIREWORKS PAGEANT AT LOS ANGELES MEMORIAL COLISEUM NEXT BIG
 EVENT SPONSORED BY THE AMERICAN LEGION OF LOS ANGELES COUNTY**

« « WE THANK YOU! » »

Football—the professional brand—is about to bow out of the sports picture in Southern California until next Fall.

The Los Angeles County Council of the American Legion, consisting of 152 Posts and 25,000 members, has presented a series of three games, featuring the best players in the country.

Profits of the games will be used for relief work among the needy disabled veterans of the world war.

By your presence at the game you have contributed to the success of the contests. The officials and players of the National Professional league, by their co-operation with the Ways and Means committee of the Los Angeles County Council, together with the football stars of the Coast have helped make these games successful.

Co-operation of the newspapers and radio stations of Southern California has been another factor in putting the games over the top.

As a result of the interest shown by the fans



RAY FLAHERTY . . NEW YORK GIANTS . . END



ED DANOWSKI . . NEW YORK GIANTS . . BACK

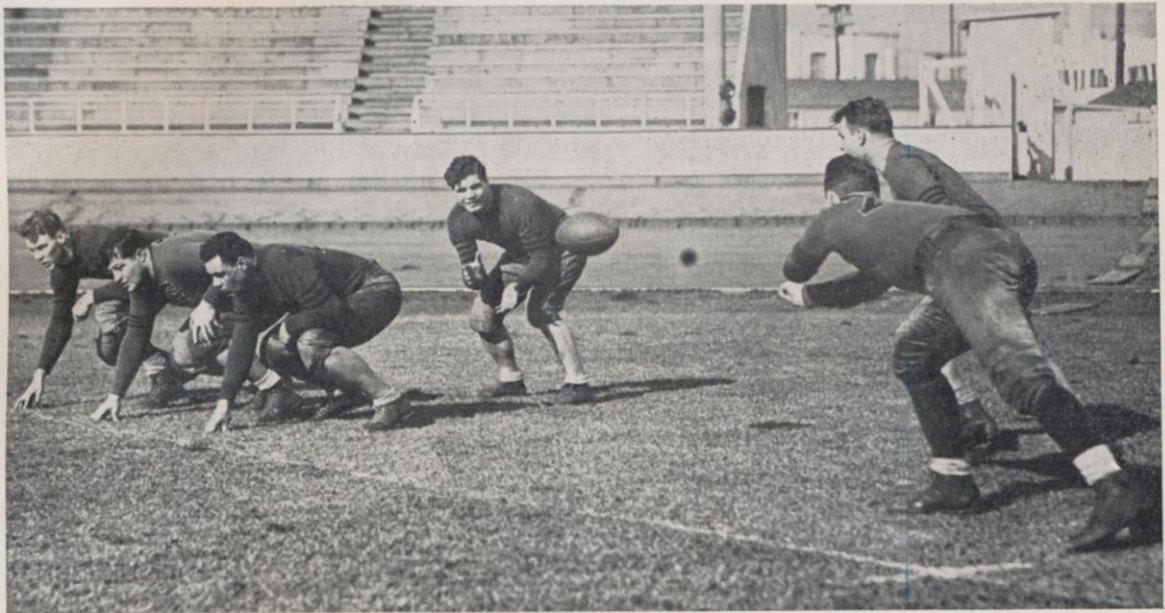
of Southern California the Los Angeles County Council of the American Legion will sponsor a professional football league in California.

It is hoped that in the near future the football championship of the world will be decided by a meeting of the Coast champions with the best teams from the East.

Harry Myers, secretary of the Ways and Means committee of the Los Angeles County Council of the American Legion and who has charge of the promotions for that body, states that the reason why the Legion has entered that field is to raise money for the disabled veterans.

The next event that will be put on by the County Council is the annual Fireworks Display and Circus at the Los Angeles Coliseum July 4th. Last year more than 40,000 persons were present to watch the \$5000 brilliant pyrotechnic display. This year an even more spectacular program is being arranged for the Coliseum and it is hoped that 75,000 persons will be present.

Popular prices will prevail for the fireworks display. It also will be the policy to keep the prices popular for all events sponsored by the Los Angeles County Council of the American Legion.



CHICAGO BEARS

LEFT TO RIGHT—Karr, R. E.; Musso, R. T.; Pearson, R. G. Manders is receiving the ball from Center Miller and Quarterback Brumbaugh is right behind Miller.



NEW YORK GIANTS, NATIONAL PRO-CHAMPIONS

BACK ROW—Left to Right: Burnett, Krause, Strong, Danowski. FRONT ROW—Left to Right: Flaherty, Morgan, Irwin, Jones, Hein, Gibson, Frankian.

NEW YORK GIANTS SQUAD

0 Smith, q	10 Jones, g	25 Krause, b
1 Flaherty, e	11 Gibson, g	27 Morgan, t
2 Isola, c	13 Richards, b	29 Irvin, t
3 Grant, t	14 Corzine, b	36 Owen, t
4 Clancy, b	18 Burnett, h	50 Strong, q
7 Hein, c	21 Frankian, e	55 Edwards, t
8 Bellinger, t	22 Danowski, h	
9 Reese, g	23 Molenda, f	

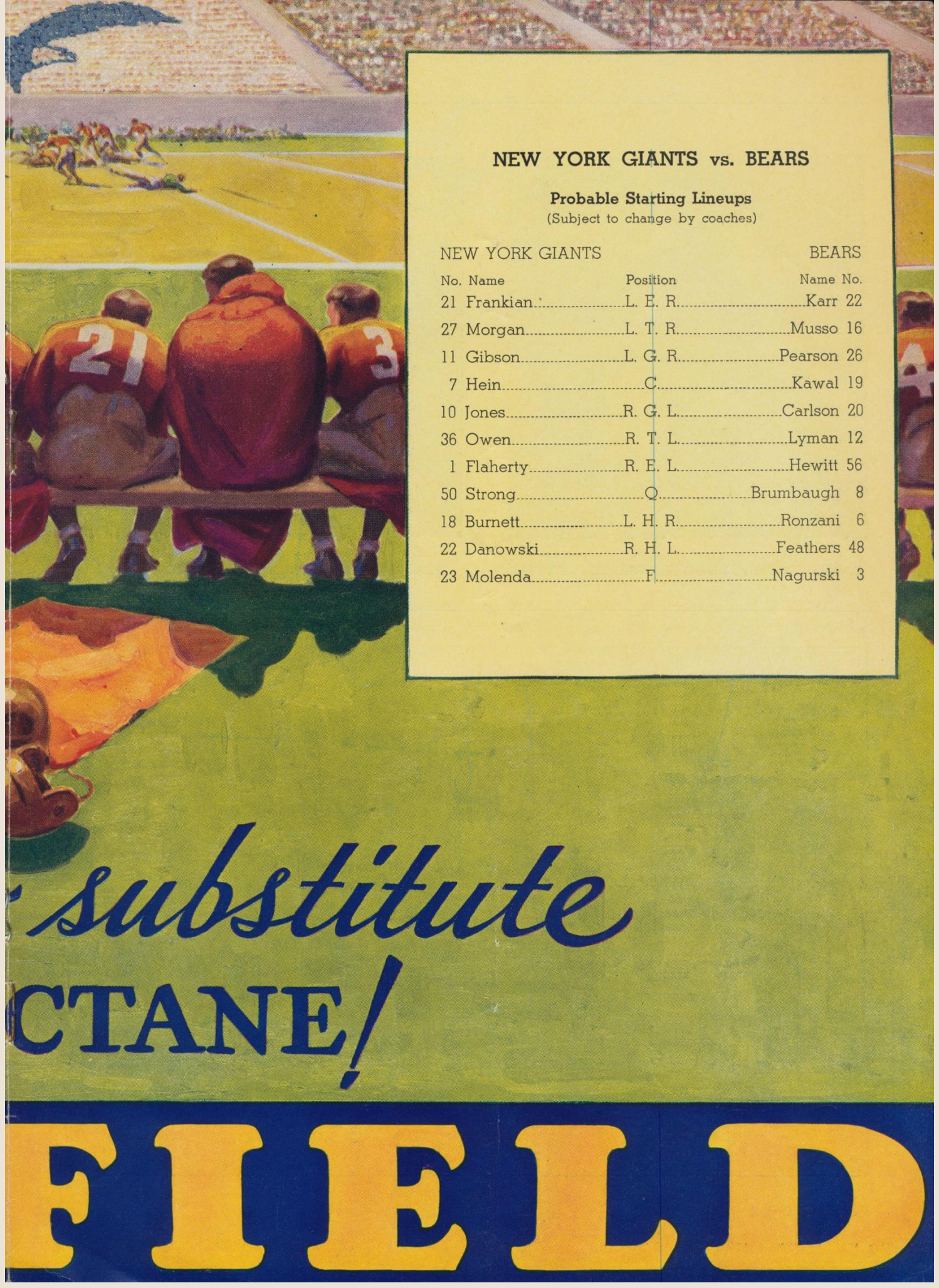
BEARS SQUAD

3 Nagurski, f	12 Lyman, t	26 Pearson, c
4 Molesworth, q	16 Musso, t	29 McMillan, g
5 Corbett, h	17 Zeller, g	33 Masterson, q
6 Ronzani, h	19 Kawal, c	47 Rosequist, t
7 Sisk, h	20 Carlson, g	48 Feathers, h
8 Brumbaugh, q	21 Becker, c	56 Hewitt, e
10 Mandors, f	22 Karr, e	76 Miller, c
11 Buss, t	24 Johnsos, e	77 Grange, h

A painting of a football field. In the foreground, three players are sitting on a wooden bench, seen from behind. They are wearing orange jerseys with white numbers. The player in the middle has the number 15, and the player on the right has the number 26. A football helmet is on the ground next to them. In the background, a player is running on the field, and a crowd is visible in the stands. The scene is set on a green field with a yellow and orange striped area in the foreground.

There is no
for HI-O

RICHI



NEW YORK GIANTS vs. BEARS

Probable Starting Lineups
(Subject to change by coaches)

NEW YORK GIANTS

BEARS

No.	Name	Position	Name	No.
21	Frankian	L. E. R.	Karr	22
27	Morgan	L. T. R.	Musso	16
11	Gibson	L. G. R.	Pearson	26
7	Hein	C.	Kawal	19
10	Jones	R. G. L.	Carlson	20
36	Owen	R. T. L.	Lyman	12
1	Flaherty	R. E. L.	Hewitt	56
50	Strong	Q.	Brumbaugh	8
18	Burnett	L. H. R.	Ronzani	6
22	Danowski	R. H. L.	Feathers	48
23	Molenda	F.	Nagurski	3

substitute
CTANE!

FIELD



BOB BELLINGER . . NEW YORK GIANTS . . TACKLE



"LINK" LYMAN . . CHICAGO BEARS . . TACKLE

PROMPT DELIVERY ON THE
NEW 1935



FORTNER & LOUD

2000 HUNTINGTON DRIVE

SAN MARINO

Colorado 8442 — — — Alhambra 8442

F. STANLEY WOOD, Branch Manager
COMMANDER 4TH AREA, AMERICAN LEGION

NEW YORK GIANTS

No.	Name	University	Height	Weight	Position
0	Smith, Willie	Idaho	5.6	148	Q. B.
1	Flaherty, Ray	Gonzaga	6	190	R. E.
2	Isola, John	Fordham	5.11	205	C.
3	Grant, Lew	N. Y. U.	6.2	225	T.
4	Clancy, Stuart	Holy Cross	5.11	195	B.
7	Hein, Mel	Washington State	6.2	218	C.
8	Bellinger, Bob	Gonzaga	5.10½	212	T.
9	Reese, Hank	Temple	6	210	G.
10	Jones, Tom	Bucknell	5.11	210	R. G.
11	Gibson, "Butch"	Grove City	5.9	206	L. G.
13	Richards, Elvin	Simpson	5.11	195	B.
14	Corzine, Les	Davis-Elkins	6	215	B.
18	Burnett, Dale	Emporia	6.1	186	H. B.
21	Frankian, Ike	St. Mary's	5.11	207	L. E.
22	Danowski, Ed	Fordham	6.1	205	H. B.
23	Molenda, "Bo"	Michigan	6	213	F. B.
25	Krause, Max	Gonzaga	5.10½	206	B.
27	Morgan, Bill	Oregon	6.2	226	L. T.
29	Irvin, "Tex"	Davis-Elkins	6	230	T.
36	Owen, Bill	Okla. A. & M.	6	220	R. T.
50	Strong, Ken	N. Y. U.	5.11	210	Q. B.
55	Edwards, "Turk"	Washington State	6.3	255	T.

CHICAGO BEARS

No.	Name	University	Height	Weight	Position
3	Nagurski, "Bronko"	Minnesota	6.2	230	F. B.
4	Molesworth, Keith	Monmouth Col.	5.9	168	Q. B.
5	Corbet, George	Milliken Univ.	5.9½	184	H. B.
6	Ronzani, Eugene	Marquette	5.9½	208	H. B.
7	Sisk, John	Marquette	6.1	200	H. B.
8	Brumbaugh, Carl	Florida	5.10	178	Q. B.
10	Mandors, John	Minnesota	6.1	210	F. B.
11	Buss, Arthur	Michigan State	6.3	218	T.
12	Lyman, William	Nebraska	6.2	246	T.
16	Musso, George	Millikin Univ.	6.2	268	T.
17	Zeller, Joe	Indiana	6.1	189	G.
19	Kawal, Ed	Illinois	6.2	205	C.
20	Carlson, Jules	Oregon State	6.0	210	E.
21	Becker, Bill	Marquette	6.1	190	C.
22	Karr, Bill	West Virginia	6.1½	194	E.
24	Johnsos, Luke	Northwestern	6.2	195	E.
26	Pearson, Madison	Kansas State	6.0	210	C.
29	McMillan, Jim	Illinois	6.0	222	G.
33	Masterson, Bernard	Nebraska	6.3	195	Q. B.
47	Rosequist, Theodore	Ohio State	6.4½	225	T.
48	Feathers, Bill	Tennessee	5.10½	185	H. B.
56	Hewitt, William	Michigan	5.11	190	E.
76	Miller, Charles	Purdue	6.1	204	C.
77	Grange, Red	Illinois	6.0	190	H. B.



"THE SECRET OF
DRIVE
IS CONTROLLED POWER"

Says **GEORGE HALAS**
CHICAGO BEARS COACH

"A man's got to be more than big to make the grade in professional football . . . he's got to be GOOD. And he's good only when he knows how to control his power . . . how to use his power . . . how to use his power when and where it's needed. Then he has the timing that makes precision plays click!"

It's a fact . . . new Gilmore Red Lion gives motors the same controlled power action that makes football players great. For Red Lion puts perfectly-timed power in every motor. It doesn't waste energy . . . but provides a smooth, increasing power drive on the piston head for the full stroke. That's useable power which puts you 'way ahead. Get it today with new Red Lion . . . where you see the checkered flag.

GET CONTROLLED POWER — the Gasoline with the Full Power-Push!

GILMORE  **RED LION**

PLUS

TETRAETHYL

AT INDEPENDENT DEALERS