

OFFICIAL PROGRAM

Sunday, October 12

1935

PRICE

10c



Frankford Yellow Jackets
vs.
Green Bay Packers

KICK-OFF
2 P. M.



Published by The Green Bay Football Corporation

**FOR COMPLETE
INTERESTING
AND ACCURATE**

**FOOTBALL
NEWS**

READ

**THE
PRESS GAZETTE**

Call a RED TOP cab
SAFE—CLEAN—EFFICIENT SERVICE
PHONE Howard 50

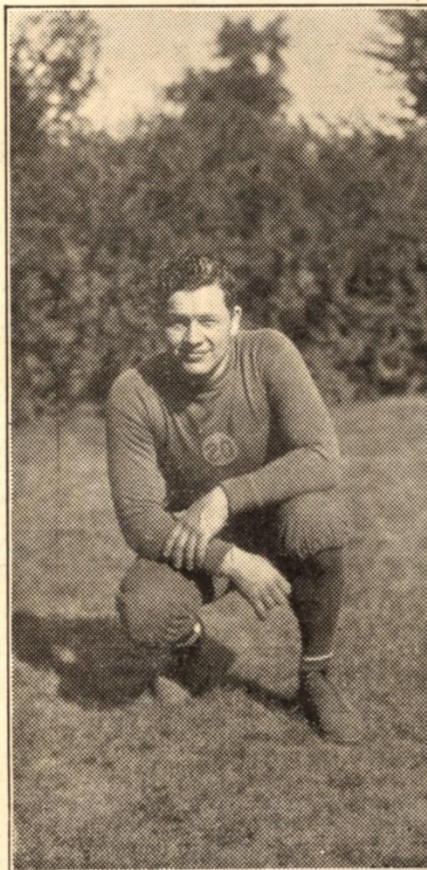
ENJOY

The Best in
 Food and Service
 in The
 Friendly Atmosphere of

**The
 Beaumont**

**DINE
 THERE
 TONITE**

**Dining Rooms Reserved
 For Private Parties**



COACH E. H. LAMBEAU

After eleven years of untiring effort, Curley Lambeau, coach of the Green Bay Packers, can look back over the span of years and trace the progress the Packers have made, finally leading them to the 1929 national professional championship. Curley graduated from East High school and achieved football fame later in college grid circles at Notre Dame. His fighting qualities, his determination to win, and his ability as a leader has made him an important figure in the world of professional football.

**THE TALK OF
 GREEN BAY**

**DINNER
 DELUX**

at

The Beaumont

Every Sunday Evening

6 to 8 P. M.

**ONE DOLLAR
 THE PLATE**

**WHERE FRIENDS
 MEET**

SAVE AND BE SAFE

Heat With

Reiss DOCK Coal

The C. Reiss Coal Co.

"Fifty Years of Coal Satisfaction"

Offices 303 E. Walnut St.—West Mason St. Bridge

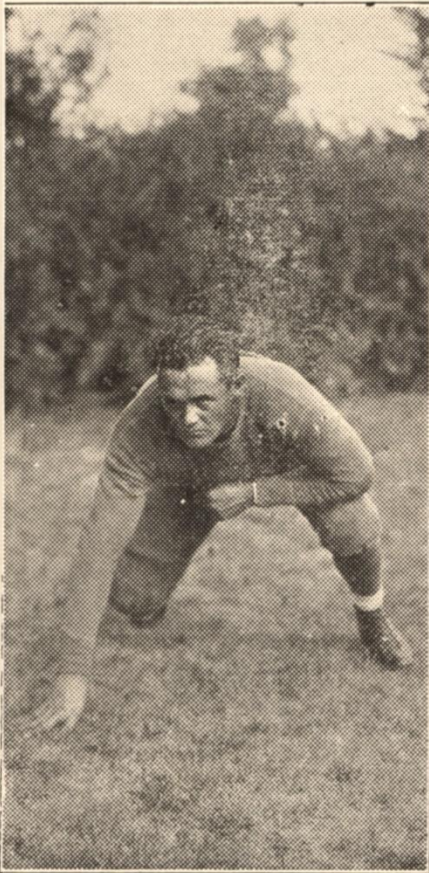
Phone Adams 915

COMPLIMENTS OF

GREEN BAY
DROP FORGE CO.

Phone Adams 1142

1341 South State Street Green Bay, Wis.



JIM BOWDOIN
Guard

And next in this picture is that man from the South. Sunny Jim Bowdoin came into these parts from the opposite side of the Mason and Dixie line, playing three years of varsity football at the University of Alabama. His stellar work in the line has made him a favorite with the fans in Green Bay. Getting down to technical points, his contours are perfect and he commands an unlimited amount of speed for a guard. Bowdoin is one of the most valuable linemen in the Packer line-up.

**BAY WEST
PAPER CO.**

MANUFACTURERS IN

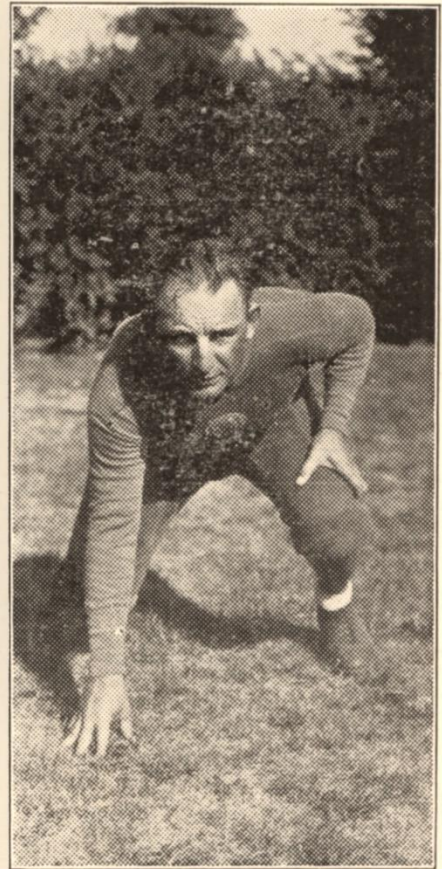
GREEN BAY



**MOSINEE
DUBLTOWLS**

"The Fibre Towels
That Feel Like Fabric"

USED EVERYWHERE



CLAUDE PERRY
Tackle

Another man from the South who has established himself as a football player is Claude Perry, the husky Packer tackle, who played three seasons of football at the University of Alabama before going North. Perry has an ideal build for a tackle and because of his speed, he has become a feared player around the professional circuit. He is an effective tackle on the defense but his greatness to the Packer football team has been exemplified in his brilliant playing on the offense.

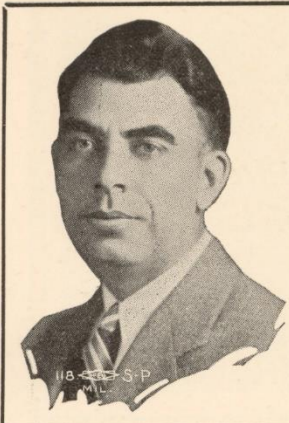
**Good Old Fashioned
Home Cooking**

Adams 6173

**WEST SIDE
RESTAURANT**

FRED SCHULTZ

315 N. Broadway



PROMOTE LEO RUEL

DEMOCRATIC
CANDIDATE TO

Clerk of
Circuit Court

My experience in this office for 7 years qualifies me to properly handle the work.

Prepared and paid for by
Leo Ruel, Green Bay, Wis.

CALL

Adams 618

For a Free Demonstration of the

VICTOR RADIO

With Home Recording

GROULX MUSIC CO.

212 Main St.

212 Main St.

"Music Holz'em"



DICK O'DONNELL
End

Another of the veterans in the Packer football machine who seems to be improving his game as the years roll by is Dick O'Donnell, the Packers' scrappy end. O'Donnell has been acclaimed by many to be one of the greatest defensive wingmen in the pro-grid league. Several times when he was called upon to nab passes, he came through with brilliant catches which eventually meant more touchdowns. Dick is fast on getting down on punts and together with his experience, he is a valuable asset.

Hudson

and

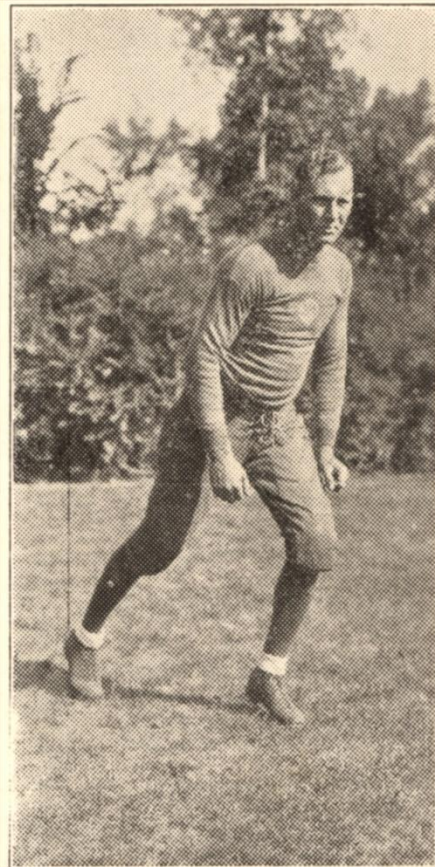
Essex

Sales and Service

Brown County Motors

Washington and Doty Sts.

Phone Adams 5400



WUERT ENGLEMANN
Halfback

Wuert Englemann is playing his first year of professional football with the Packers, having completed a colorful career in the backline for three successive seasons with the University of South Dakota. He is a halfback by trade and the sports' writers in South Dakota state never grow tired of retelling his exploits while on the college gridiron. Englemann was wanted by several professional teams around the country, but when he was offered a contract by the Packers, he cast his lot with Green Bay.

PINCHARD DRUGS

SODAS

CIGARS

KODAKS

1354 MAIN ST.

PHONE HOWARD 20

Schauer & Schumacher

Furniture and Funeral Directors

Corner Adams and Walnut

Funeral Home 109 N. Adams

Phone Adams 567-W

Green Bay, Wis.



RE-ELECT
H. J. NEVILLE
COUNTY CLERK
ON HIS RECORD

Prepared and paid for by
H. J. Neville, Green Bay, Wis.



LA VERN R. DILWEG

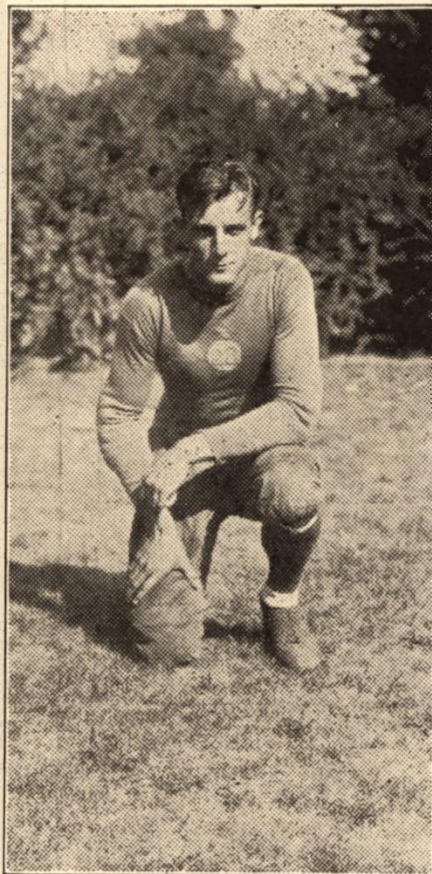
Democratic Candidate For

ASSEMBLYMAN

1st District Brown County

Prepared and paid for by
LaVerne Dilweg, Green Bay

With Clifford & Dilweg Law Firm



LAVVIE DILWEG

End

Dilweg closed an All-American college career at Marquette University, playing for a season with the Milwaukee Badgers and then joining the Packers to assist them in their quest of a national professional championship. Lavvie has been an All-Professional end for several consecutive seasons and as the years roll by his repertoire of tricks is gradually increasing. He is a sure bet when it comes to making a tackle, he has speed going down on punts, and has no equal when it comes to snagging passes.

North End Lumber & Fuel Co.

Lumber, Fuel, Building
Material

PHONE HOWARD 73

838 PHOEBE ST.

TIRED?

A Glass of
Fairmont's
Selected and
Pasteurized

MILK

is most healthful and
refreshing for the
Worker, The Scholar,
The Athlete.

For Youth and Old Age!

TRY IT!

CALL
ADAMS 6000

The
**FAIRMONT
CREAMERY
COMPANY**

Parts and Service on
**WILLYS-OVERLAND
PRODUCTS**

CLIFF WALL MOTOR SALES

3 Blocks From The Football Field



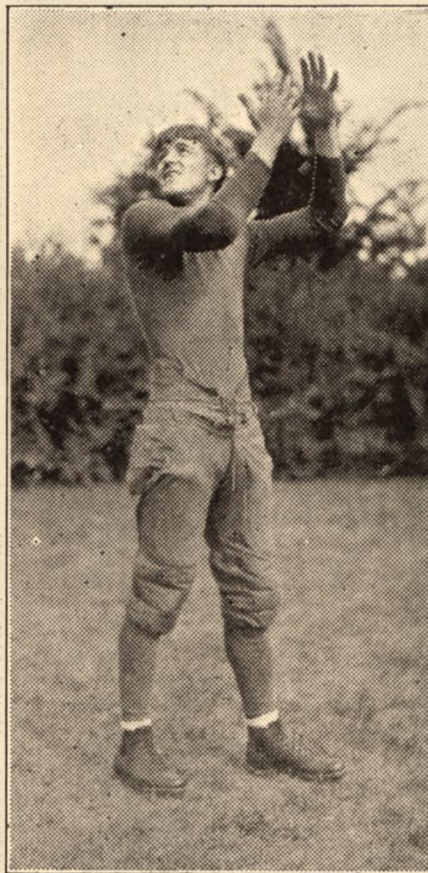
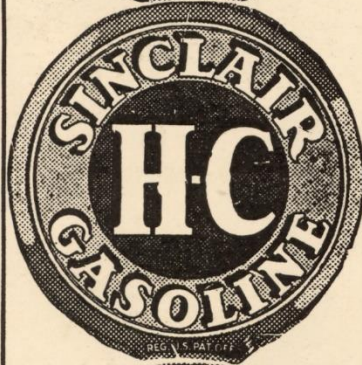
RE-ELECT
WM. J. NICKOLAI
SHERIFF

REPUBLICAN TICKET

Primaries September 16

Election November 4

Prepared and Paid for by Wm. J. Nickolai, Green Bay, Wis.



DAVE ZUIDMULDER
Halfback

Dave Zuidmulder is a graduate of East High, having played with the Crimson and Red eleven four seasons. He first went to St. Ambrose college and later he changed over to Georgetown where he played frosh football. Dave started with the Packers last season and although he played in only a couple games, his work proved conclusively that he is gradually mastering the professional game. He is a nice running halfback, an average punter, and a good passer.

Baierl's Cleaners & Tailors

235 S. WASHINGTON ST.

Phone Adams 374

GREEN BAY, WISCONSIN

Lawrence Basten & Son

Furniture — Undertaking

924 MAIN ST.

PHONE ADAMS 2274-W

GRAHAM - PAIGE

Safety Glass in Every Window

RIECK GARAGE

GENERAL REPAIRING

1141 Main St.

PHONE ADAMS 1219

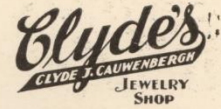
... if it's the **BEST**
'NORTH WESTERN'
has it!

—where fast, convenient train schedules, modern equipment and a courteous, efficient train personnel are at your service on your journeys south, west or north.



For information, reservations and tickets apply to
T. A. CARNEY, Div. Frt. & Pass'r Agent
M. W. HOLLISTER, Ticket Agent, Green Bay, Wisconsin

CHICAGO & NORTH WESTERN RY.



413 W. Walnut Street

Adams 3562



VERNE LEWELLEN
Halfback

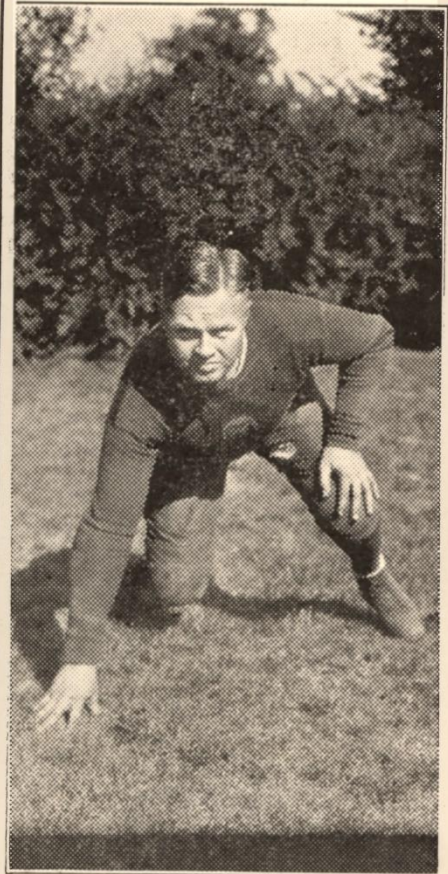
There goes the District-Attorney of Brown County! Many times did radio announcers repeat this sentence over the "mike" while the Packers were on their Eastern invasion last season. Lew is starting his seventh year with the Packers, coming here from Nebraska University. He has already been placed on the All-Professional teams three times, winning this distinction alone through his masterful punting. When it comes to ripping off a couple yards, Lew is always dependable.



IT'S WISE
TO CHOOSE A SIX

**BOGDA
MOTOR CO.**

415-417 Main St.
Howard 32



"WHITEY" WOODIN
Guard

Football is not a he-man's game unless it is played roughly is the contention of "Whitey" Woodin and just to prove that he believes in his own philosophy, he always plays the game in he-man style. He is a graduate of Marquette University and has been with the Packers for eight seasons. Football fans are always sure of first-class football when they see Woodin take his place in the Packer line-up against the Chicago Bears to make faces at his two favorite cronies, Bill Fleckenstein and "Baby Face" Trafton.

ALWIN MFG. CO.

METAL STAMPING

1800 South Broadway

Phone Howard 1849

Play Safe — Insure With
The Kruger Insurance Agency, Inc.
 206 Main Street


KELLNER'S GROCERY
 FANCY AND STAPLE GROCERIES
 Phone Adams 5160 1108 Dousman St.

MERCHANTS' GROCERY CO.
 OF GREEN BAY, INC.
Wholesale Groceries
 112 STUART ST. PHONE HOWARD 1500-1501
 GREEN BAY, WIS.

Northern Coal & Supply Co.
 Dealers in
 Coal, Wood and Building Material
 Pearl and Arndt Streets
 Phone Adams 39 Green Bay, Wis. Phone Adams 2082

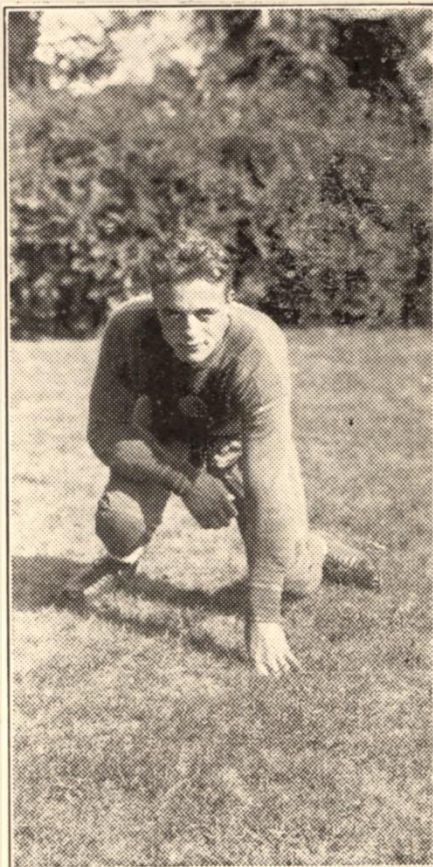
STOP FOR GAS
 ON YOUR WAY NORTH
 HIGHWAY 141 and 41
HARRIS OIL CO.
 BROADWAY AND MATHER

Boosting For
THE PACKERS and
KEN RADICK
 Watch Them Go



The White Store
 606-608-610 SO. BROADWAY

South Side Garage
 Al. La Violette, Prop.
EXPERT AUTO REPAIRS
 Overhauling Our Specialty
325 South Broadway
 All Work Guaranteed
 Phone Adams 18 Green Bay, Wis.



"FAT" RADICK
Tackle
 Kenneth Milton Radick is the name of the well-proportioned young man pictured above who last season was a co-captain at Marquette University. "Fat" is at home playing tackle but when things went from bad to worse at Marquette with its ends, Coach Murray shifted him over to a wing position. Walter Eckersall made the following commentation: "If Radick had played at end with Marquette during the entire season, I do not see how any man picking an All-American team could dare to keep him off the first team."

Popular Choice!




to
MILWAUKEE CHICAGO
 No. 10
 Lv. Green Bay 7:00 a. m.
 Ar. Milwaukee 9:55 a. m.
 Ar. Chicago 11:45 a. m.
 Parlor car, coaches

The Copper Country Limited
 Lv. Green Bay 1:35 a. m.
 Ar. Milwaukee 5:25 a. m.
 Ar. Chicago 7:40 a. m.
 Dining car serving breakfast; coaches.
 Sleeping car (open for occupancy at 9:30 p. m.)

To Northern Michigan
 The Copper Country Limited leaves Green Bay 10:30 p. m. The Iron Country Limited leaves Green Bay 2:55 a. m.

Green Bay Ticket Office
 Phone Adams 866
 G. C. Hittel, Div. Pass. Agent
 Phone Adams 6170

The MILWAUKEE ROAD 1005

BADGER SHOW CASE CO.
 Manufacturers of
Store, Bank and Office Fixtures
GREEN BAY, WIS.

BRETTING TRACTOR & EQUIPMENT CO.



"Caterpillar" Track-Type Tractors
"Caterpillar" Combines
"Caterpillar" Road Machinery



OFFICE AND WAREHOUSE
1836 S. BROADWAY TELEPHONE ADAMS 285
GREEN BAY, WIS.
"Highway, Forest and Farm Equipment"

THOMAS PRODUCE CO.

WHOLESALE

FRUITS, PRODUCE AND GROCERIES

— DISTRIBUTORS OF —

SUPERIOR QUALITY BRAND SUNKIST CANNED
FRUITS, VEGETABLES, COFFEE AND
DRIED FRUITS

BY ALL MEANS TRY SUNKIST COFFEE

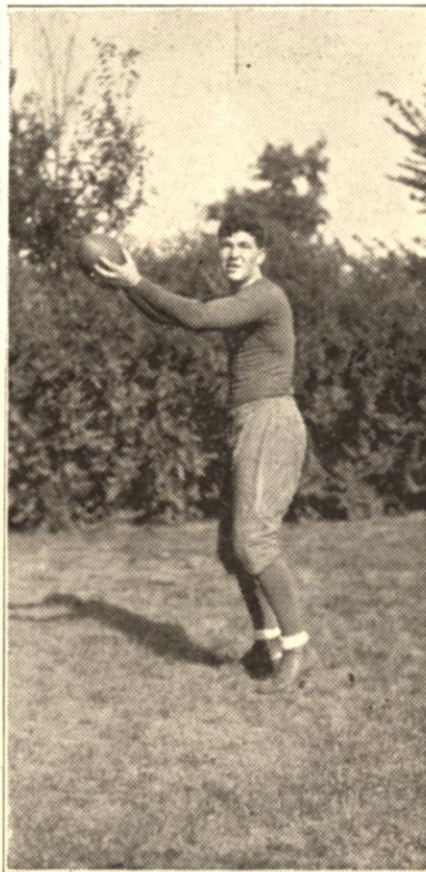
The New General Electric Radio

FOOTBALL, BASEBALL,
ENTERTAINMENT

SOMETHING NEW
AND UP-TO-DATE

KEHL ELECTRIC CO.

219 North Adams
Phone Adams 572



ARNOLD HERBER *Quarterback*

Arnold Herber is a graduate of West High, playing three years of football with the Purple and White eleven. He first went to the University of Wisconsin and was elected frosh captain in 1928. Then he shifted over to Regis college and played spectacular football in the Rocky Mountain region. Last year he again enrolled at Wisconsin and from all newspaper predictions, he was conceded a regular position on the Badger varsity. He has decided to quit college for good and see the inside of pro football.



JOE FRANCIS DEMOCRATIC CANDIDATE FOR SHERIFF

KINDLY ASKS YOUR SUPPORT
FOR A SECOND TERM

Prepared and paid for by
Joe Francis, Green Bay, Wis.

SCHWEGER DRUG STORE

"Sudden Service"

2 Stores
100 N. Broadway
100 N. Adams St.

Football Supplies

WHOLESALE PRICES QUOTED
TO SCHOOLS AND
ORGANIZED TEAMS

Gordon Bent Co.
"The Sporting Goods Store"

The centerfold, pages 11 to 14, are missing from this program and inserted here from the Oct. 5 program against the Giants.

PRO FOOTBALL GOSSIP

Stapleton and Frankford went 50-50 in their week-end series. The Stapes bit the dust in Philly by a 7 to 3 score but in Sunday's game on their own field, they put the skids under "Bull" Behman's aggregation 21 to 0.

Orin Pape, Iowa, was the hero and goat of the Chicago Card-Minneapolis affair. He ran 80 yards for the Gophers' touchdown in the third quarter but his fumble paved the way for a Chicago touchdown in the closing minutes.

NATIONAL LEAGUE

	W.	L.	T.	Pct.
Green Bay.....	2	0	0	1.000
New York.....	2	0	0	1.000
Portsmouth.....	2	0	0	1.000
Stapleton.....	2	1	1	.667
Frankford.....	2	2	0	.500
Providence.....	1	1	0	.500
Minneapolis.....	0	0	1	.000
Brooklyn.....	0	1	1	.000
Chicago Cards.....	0	1	1	.000
Chicago Bears.....	0	1	1	.000
Newark.....	0	4	1	.000

The re-vamped Providence Steam-rollers took it on the nose from the New York Giants by the score of 27 to 7. Benny Friedman's outfit was clicking nicely and they counted a touchdown in each of their four quarters.

Myles McLain, sometimes called the 'second Jim Thorpe' is drawing his football pay check from Portsmouth. The Indian star is facing some keen competition in the backfield but Coach Griffen is well satisfied with him.

Last Saturday's Result

Frankford 7, Stapleton 3.

Last Sunday's Results

Green Bay 7, Chicago Bears 0.
New York 28, Providence 7.
Minneapolis 7, Chicago Cards 7.
Stapleton 21, Frankford 0.

Wednesday's Results

Stapleton 7, Newark 7.
Providence 14, Frankford 0.

Saturday's Game

Newark at Frankford.

Sunday's Games

New York at Green Bay.
Chicago Bears at Minneapolis.
Chicago Cards at Portsmouth.
Brooklyn at Stapleton.
Newark at Providence.

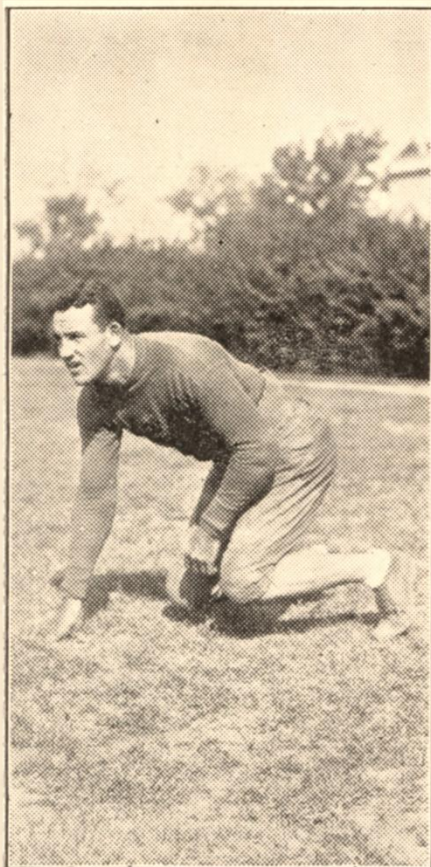
"Frosty" Peters is continuing in postgraduate football where he left off in college. It was his well directed forward pass that enabled Young to prance across for a Providence touchdown in the game with the N. Y. Giants.

District Attorney Lewellen, Packer halfback, is carrying on his campaign for re-election by some brilliant footballing. The Green Bay star played the lead role in the only touchdown of the Bear game. And he still kicks 70 yards.

Attendance figures at the early games this season in the National league show a healthy increase over other years. Some 11,000 spectators saw New York play in Providence while Frankford opened up before a bumper throng.

The Brooklyn club is piling up a lot of railroad mileage in the first month of the season. The Dodgers don't open at home until Oct. 12. Before this Depler's crew has visited Chicago, Portsmouth, Stapleton and Providence.

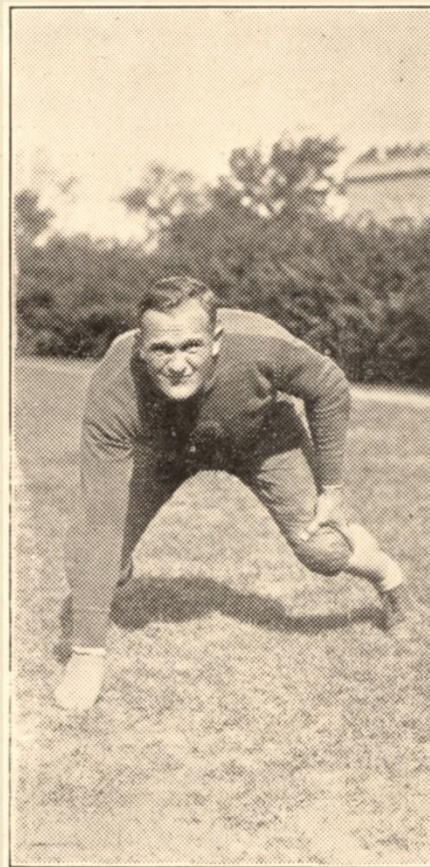
The New York Giants invade the west for a two-game tour which may just about decide their pennant chances. This Sunday the Gothamites tackle the Packers in Green Bay while on Oct. 12 they will meet the Bears in Chicago.



TOM NASH

End

Tom Nash paired with Shiver at Georgia in 1927, making one of the greatest end combinations in Southern football history. At the end of the season, Nash was awarded All-American honors over his team mate, Shiver. Tom is also a star baseball player and has been the property of the New York Giants for several seasons. Nash is a fast man going down on punts, he is a vicious tackler, and is always a dependable wingman when the Packer air attack is launched and a few touchdowns are needed.



"CAL" HUBBARD

Tackle

"Cal" Hubbard, boxer, baseball umpire, football player et cetry, is somewhat like Primo Carnera only that he doesn't care for spaghetti or Mussolini. Hubbard was purchased from the New York Giants and he is built so broadly that his opponents have trouble puncturing his side or the line. "Cal" graduated from Geneva college where he gained recognition as an All-American. He has been used at end but he seems to be more at home playing tackle. For a man-mountain, he is fast and moves with agility.

**OPEN DAY AND NIGHT
GATEWAY MOTORS, Inc.**



GENUINE FORD PARTS

PHONE HOWARD 228 GREEN BAY, WIS.

Frank J. Nikolai, Pres. Kerwin Hagerty, Sec.-Treas.

**KIHLBERG
AUTO REBUILDERS**

Incorporated

**AUTO BODIES AND FENDERS REPAIRED
AUTOMOBILE UPHOLSTERING AND PAINTING**

FRAME, AXEL AND WHEEL STRAIGHTENING

**WE SPECIALIZE IN THE REBUILDING OF
WRECKED CARS**

726 Cedar Street Phone Adams 367

PACKERS

10 Zuidmulder	St. Ambrose	175	Halfback
11 Bloodgood	Nebraska	152	Quarterback
12 Herber	St. Regis	195	Quarterback
14 Zuver	Nebraska	198	Guard
17 Dunn	Marquette	180	Quarterback
18 Fitzgibbons	Creighton	174	Halfback
19 Hanny	Indiana	215	Tackle
20 Lambeau	Notre Dame	195	Halfback
22 Dilweg	Marquette	205	End
23 Woodin	Marquette	210	Guard
24 Blood	St. Mary's	186	Halfback
26 Perry	Alabama	212	Tackle
27 Molenda	Michigan	215	Fullback
28 McCrary	Georgia	207	Halfback
29 Darling	Beloit	210	Center
30 O'Donnell	Minnesota	193	End
31 Lewellen	Nebraska	184	Halfback
32 Bowdoin	Alabama	234	Guard
33 Englemann	South Dakota	191	Halfback
34 Sleight	Purdue	228	Tackle
35 Radick	Marquette	210	Tackle
36 Michalske	Penn State	210	Guard
37 Nash	Georgia	210	End
38 Lidberg	Minnesota	190	Fullback
39 Earpe	Monmouth	240	Center
40 Hubbard	Geneva	250	Tackle

Referee, Bobby Cahn, Chicago
Umpire, James Keefe, Holy Cross
Head Linesman, Halsey Hall, Minnesota

DINE

AFTER THE GAME

WITH MUSIC

CLARE WILSON

AND HIS

**8 Piece Recording
Orchestra**

SUNDAY DINNER \$1.25

Hotel Northland

A Schroeder Hotel

FISK AIRFLIGHT TIRES AND TUBES

NATIONAL BATTERIES FADA RADIOS

RALPH'S TIRE SHOP

1023-25 Main St. — Phone Howard 700

Riverside Steel & Machinery Co.

H. L. Flower, Manager

Office and Yards, Corner South Broadway and Tenth St.

Reinforcing Iron, Round and Flat Bars, Structural,
Sheets, Plates, Boiler Tubes and Supplies

Ornamental Wrought Iron Work A Specialty

Phone Adams 411 Long Distance Phone Adams 1092

There
IS
A Difference
in Gasoline



5
Busy
Service
Stations

BARKHAUSEN OIL CORPORATION
Mobiloil Dealers

Verifine

ICE CREAM
and
CHOCOLATE MILK
ARE SERVED
EXCLUSIVELY
AT ALL GREEN BAY
PACKER FOOTBALL
GAMES

IN WISCONSIN
ASK FOR

Verifine

DAIRY PRODUCTS

FRANKFORD YELLOW JACKETS

No.	Name	Position	Weight	Height	College
10	KOSTOS	Left End	190	5.11	Bucknell
24	TACKWELL	Left Tackle	215	6.1	Bucknell
20	HANSON	Left Guard	205	6.1	Minnesota
9	BARRAGAR	Center	210	6.0	So. California
22	GIBSON	Right Guard	205	6.0	Minnesota
5	WATKINS	Right Tackle	210	6.2	Georgia Tech
17	STEPONOVICH	Right End	185	5.11	Kansas Aggies
8	HOMAN	Quarterback	148	5.5	Lebanon Valley
2	PHARMER	Left Halfback	186	5.10	Minnesota
11	PEDERSON	Right Halfback	185	5.9	Augsburg
16	JOESTING	Fullback	192	6.2	Minnesota

SUBSTITUTES

LINEMEN

21	WARD	End	215	6.1	So. California
23	JONES	Guard	208	5.10	So. California
25	WILSON	End	185	5.11	Cornell

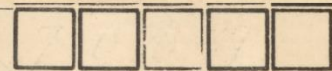
BACKS

4	CRABTREE	Back	150	5.10	U. of Florida
6	GOODBREAD	Back	203	5.11½	Florida
7	HALICKI	Back	195	5.11	Bucknell
15	SEBORG	Back	190	5.11	Kalamazoo
18	RODRIGUEZ	Back	175	5.10	W. Va. Wesleyan
27	NYDAHL	Back	162	5.11	Minnesota

This page is missing from the program.

The Frankford lineup is from another program.

Packers



GREEN BAY GLASS CO.

Chas. Mathys

Louis Mathys

GLASS OF ALL KINDS
FURNITURE TOPS
AUTO GLASS INSTALLED

113 S. Broadway

Green Bay, Wis.

Hot Drinks at Our Fountain

BEFORE AND AFTER THE GAME

NOEL & LE CLERCQ

Broadway Pharmacy

101 N. Broadway

ENJOY THE GAME
THEN
ENJOY A GOOD SHOW
AT THE

FOX
THEATRE

TONIGHT—
BUSTER KEATON in
DOUGH BOYS

Mon. - Tues. - Wed.



EVANS & MERRILL
LAWYERS
SHERIDAN BUILDING

DR. A. H. WOLFE
OSTEOPATHIC PHYSICIAN
206 MAIN ST.

RIGNEY DWYER
REGISTER OF DEEDS

OLE HANSEN
COUNTY TREASURER

USE THE
NEW

ISO - VIS
RED CROWN
ETHYL

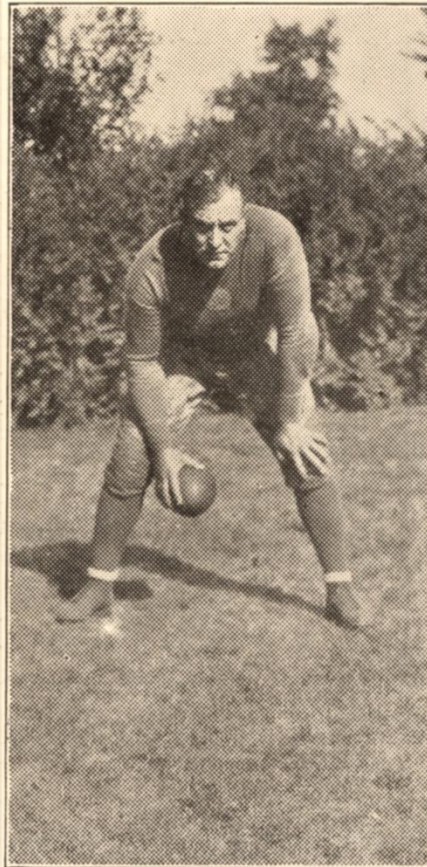
AN IDEAL COMBINATION

Standard Oil Co.
(Indiana)

Industrial and
Paper Mill Equipment

P. F. Suess
Machinery Exchange

Power and Transmission
Office Phone Adams 4004
Residence Phone Adams 2070
208 S. PEARL ST.
GREEN BAY, WIS.



"JUG" EARPE
Center

"Jug" Earpe stands next to Curly Lambeau as the oldest man in the point of service on the Packer team. He started his professional career, playing at Rock Island, and shortly after he left to play with the Packers. He is a graduate of Monmouth college and has retained his old collegiate enthusiasm which he imbues in the Packer players during the game. "Jug" is a great team worker and when he is in a game, he is always giving the best he has so that the Packers may count football victories.

Telephone
Adams 534

Green Bay
Shoe
Repairing
Company

Shoes Repaired While
You Wait or
Called For and Delivered

214 Cherry Street
Green Bay, Wis.

ROY'S TRANSFER
AND STORAGE

"Always On Time"
817-27 McDonald St.
CALL ADAMS 33



RE-ELECT

Verne C. Lewellen

REPUBLICAN CANDIDATE FOR

DISTRICT ATTORNEY

Primaries September 16th

Election November 4th

Prepared and paid for by Verne C. Lewellen, Green Bay, Wis.

Platten Bros.

High-Grade

MEATS

Is Served In
This Park

Platten Bros.

Office 413 Dousman St.

Phone Adams 1087



"RED" DUNN

Quarterback

Introducing Joseph "Red" Dunn, Packer field general, who calls the grid plays for Green Bay. Dunn was knighted an All-American while at Marquette University and after a season with the Milwaukee Badgers and two with the Chicago Cardinals, he became the property of the Packers. "Red" is a dependable passer and is also gifted with one first-class kicking toe. This will be his fourth year with the Packers but the Green Bay clientele never grows tired of hearing the red-head warble the numbers.

BOHEMIAN BAKING COMPANY

Sliced

Bamby Bread

Butter Krust

Bohemian Rye

1263 Main Street

Phone Adams 1745

AFTER THE GAME VISIT

ALBERT ROSAL'S

Formerly

"PADDY" RYAN'S

By The Main Street Bridge

AMERICAN RESTAURANT

Nick Tubekis, Prop.

Before You Try The Rest,
Try The Best

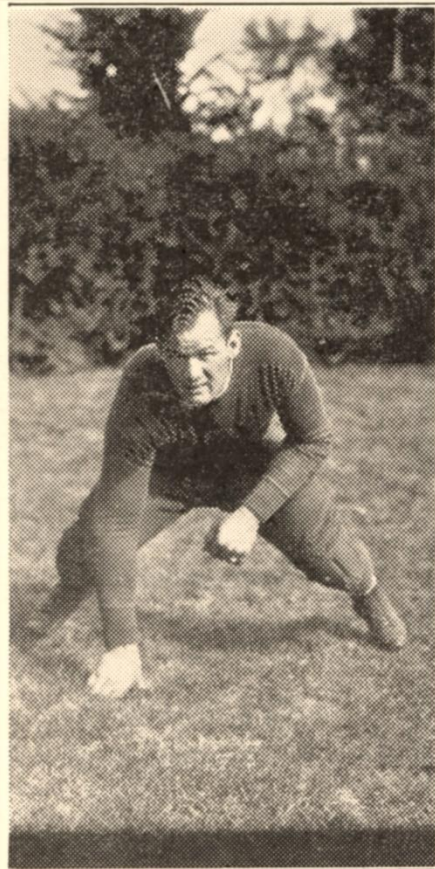
Try Our Sunday Chicken Dinners

Best Coffee in The City

105 North Washington Street

Green Bay, Wis.

<p>AUTO ELECTRIC SERVICE When You Are in Trouble Quick Service on Battery, Ignition, Generator Starter, Magneto and Tire Repairing U. S. L. Batteries Everything in Accessories VAN'S BATTERY & ELECTRIC 327 MAIN ST.</p>	<p>Meet The Football Players at the CONGRESS Green Bay's Football Headquarters Football Scores Received Here</p>
<p>JOSEPH GOLUEKE QUALITY PAINTING AND DECORATING 935 E. Walnut St. Phone Adams 1508</p>	<p>HARRISON HANNON DRUGGIST Main and Webster Green Bay, Wis.</p>



ELMER SLEIGHT
Tackle

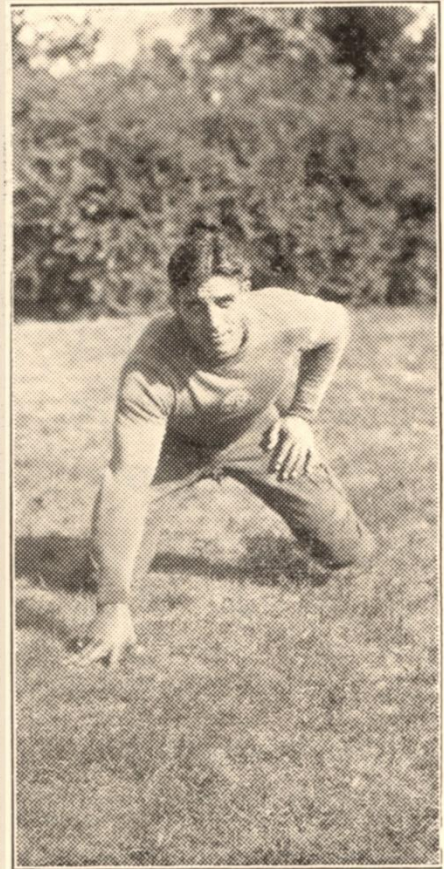
Elmer "Red" Sleight was one of the outstanding linemen with the great Purdue eleven of last season, winners of the Big Ten championship. At the close of the season when All-American honors were served out to those who deserved rating, Sleight was almost an unanimous choice for one of the first-string tackle positions. "Red" is opening his professional career and many expect him to come through with the brilliant tackle play which made him a favorite with the fans in the Big Ten conference.

BOSSE'S NEWS DEPOT

Corner Cherry and
 Adams Sts.

Candy, Tobacco,
 and the Finest
 Selection of
 Pipes in the City

Phone Adams 101



AUGUST MICHALSKE
Guard

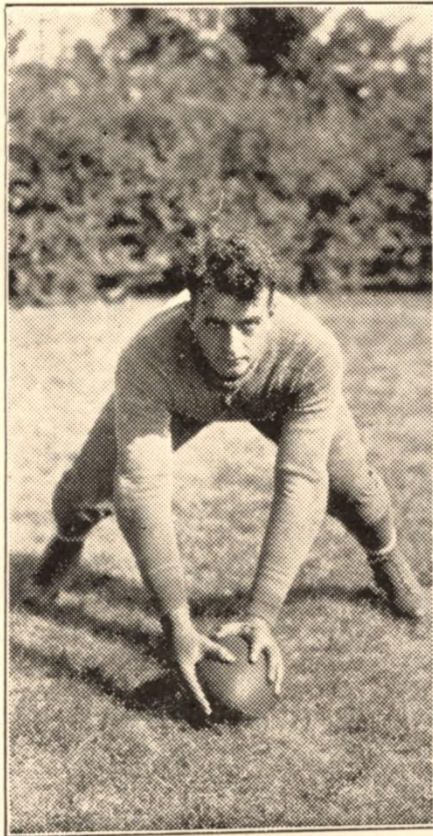
August Michalske starred while in college football at Penn State, and then after a colorful career he joined the professional ranks, playing with the New York Yankees and later with the Green Bay Packers. Last season his gaudy plays enabled the Packers to win victory after victory and at the close of the season, he was voted the best lineman in the national professional league. He is a popular football player because he is always working and is determined to win.

HUPMOBILE Del Motor Car Co.

419 N. Adams St.

Phone Adams 4553

KRIPPNER'S OK FURNITURE



"BOOB" DARLING
Center

"Boob" Darling hails from dear old Beloit where he broke into print with several well-played games in the Little Four Conference. He has been an understudy at the center post but he has now acquired enough experience to step into the line-up and play spectacular football. When he was called upon to play regularly in the line, he proved to be a hard worker. Last year he forged to the front with the Packers and when they played in the East, he brought out his value to the Packers' pennant cause.

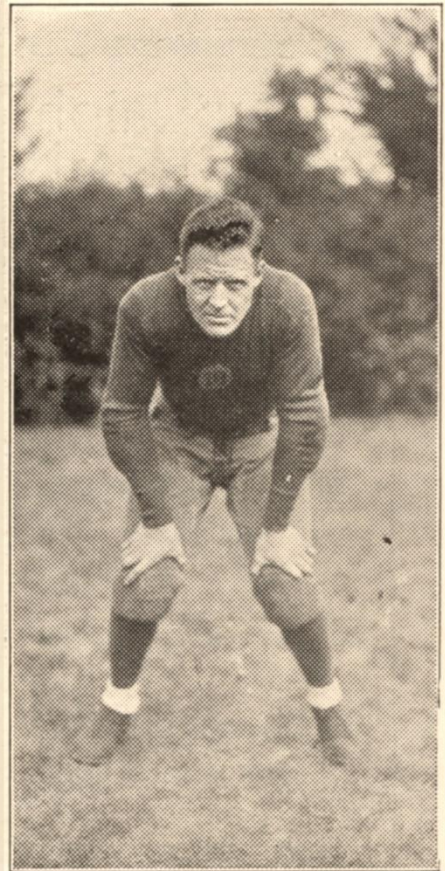
REO ROYALE EIGHT

The Most Beautiful Model
of America's Longest
Lasting Car

Reo Flying Cloud
Six and Eight

PHILLIPS
MOTORS, Inc.

132 South Adams Street
Adams 141



"FITZ" FITZGIBBONS
Halfback

Fitzgibbons is another hardened professional football player who has been signed by the Packers because of his experience. He played football with the Duluth Eskimos several years ago and when that team withdrew from the professional league, he changed over to the Chicago Cardinals where he played brilliant football. Fitzgibbons is as much the fighter as his Irish name will disclose and when he goes into a game he always makes sure that his opponents are given plenty of trouble by his brilliant ball carrying.

**SEARS,
ROEBUCK CO.**

**We Guarantee Satisfaction
or Your Money Back**

CLARION RADIO
THE CHAMPION OF 1930

BUBOLZ RADIO SALES
315 South Ashland Phone Howard 630

WARREN
INSURANCE AGENCY

Established 1874

PROVEN SUPERIOR SERVICE
611 Bellin Building Phone Adams 786
All Forms of Insurance

Ralph
ANDERSON
ADVERTISING ARTIST
310 PINE ST.
GREEN BAY - WIS.
Phone
Howard 2147

SHOE SERVICE
SHOP

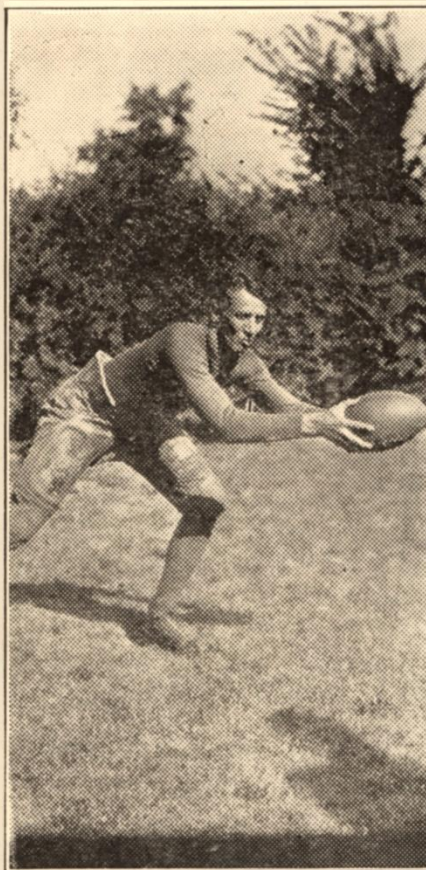
WE CALL FOR AND DELIVER

106 DOUSMAN STREET
PHONE ADAMS 124

E. P. MURPHY
GRANITE CO.

MONUMENTS

730 Lincoln St.
Phone Howard 8-W
Green Bay, Wisconsin



CAL BLOODGOOD
Quarterback

Bloodgood was signed to play with the Packers last season but owing to an injury to his ankle which was inflicted while playing baseball as the season was nearing its close, he was forced to suspend all thoughts of playing professional football with the Packers last year. He played pro football with Cleveland three years ago and Packer fans can still remember on that rainy day when the Packers eked out a 7-6 win how the little quarterback broke loose and raced 80 yards through the team for a touchdown.

COMPLIMENTS OF

Green Bay
Auto Parts
Company

Automotive Jobbers

725 MAIN STREET
PHONE ADAMS 805

EAT
KNOWLAN'S
OLD FASHIONED
CHOCOLATES

**FRED STIMPSON
CHOICE MEATS**

PHONE HOWARD 399 1100 E. WALNUT ST.
GREEN BAY, WIS.

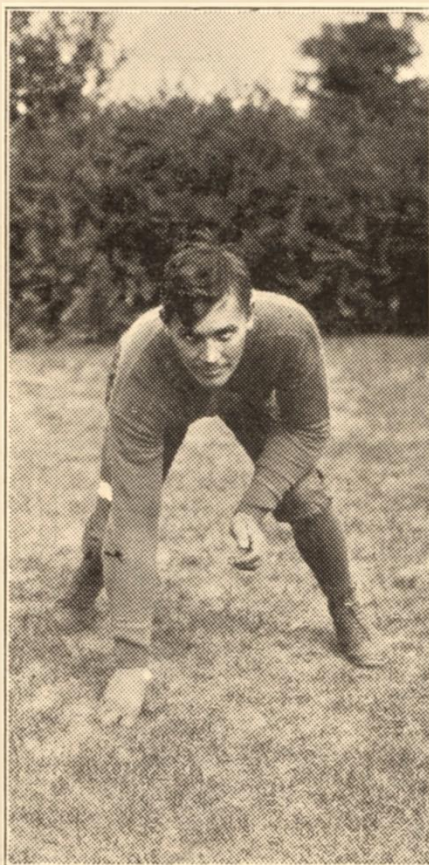
**KODAKS
EDISON—CLARION RADIOS
THE STILLER CO.
210-212 Cherry Street**

COMPLIMENTS OF
DIANA MFG. CO.
DOWNIES SANITARY NAPKINS

FINDEISEN & GREISER CO.
DEALERS IN FURNITURE
228-230 Main Street Green Bay, Wis.

**RIDGLEY
SUPPLY**

Melotone
Ridgley
Special Malt
Bar Supplies
Malt Extracts
Bottling Supplies
Glasses, Etc.
For Home Use
Wholesale and Retail
PHONE
ADAMS 1231-W
1234 Main St.



CARL LIDBERG
Fullback

Lidberg is the best defensive backliner on the Packer team, gaining his gridiron experience at the University of Minnesota under the tutelage of Coach "Doc" Spears. "Cully" has been the author of many brilliant plays such as the ones he displayed in the final Chicago Bear game. Chicago sports' writers were so pleased with his brilliance in the Packer backline that after the game they hailed him in their columns as the greatest fullback that ever played a game of football in Chicago.

**PLUMBING
W.J.FEMAL
HEATING**

925 East Walnut Street
Green Bay, Wis.

Maloney Drug Store

PHONE HOWARD 300
724 MAIN ST.
SIX COURTEOUS CLERKS
LUICK'S ICE CREAM
KAAP'S AND WHITMAN'S
CANDIES

AW-KUM-INN

**FRIED CHICKEN AND
TENDERLOIN STEAK
SANDWICHES**

"BEST IN TOWN"

ADAMS 2619

EAST MASON STREET

Johnny Blood 1928

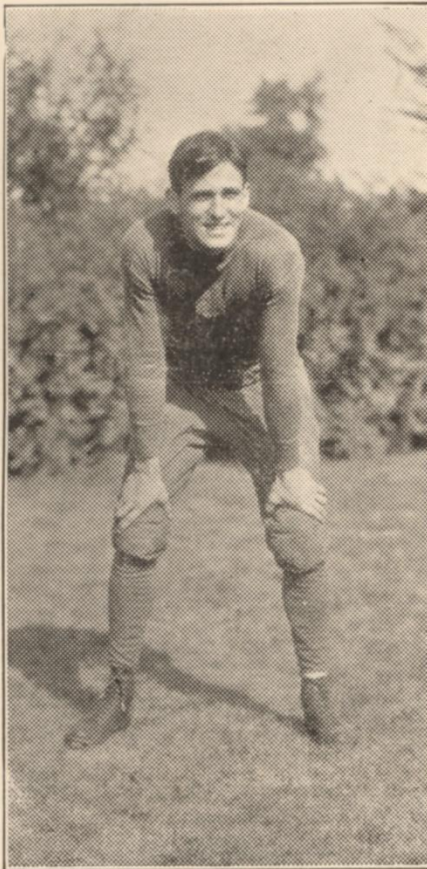
Landsmann Printing Office

COMPLETE PRINTING SERVICE

226 Pine Street

Phone Adams 146

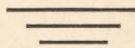
PRINTERS FOR PACKER FOOTBALL CORPORATION



JOHNNY BLOOD
Halfback

They call him the "vagabond half-back" around the professional circuit but to the fans in Green Bay, Johnny Blood is one of the native sons. He is probably the most colorful football player that ever flaunted the Blue and Gold with the Packers. Many attribute a great deal of the success of Green Bay in the professional league to the brilliant ball carrying of Blood. Johnny can be called on to play any backline position, and on the defense when he tackles 'em they usually stay tackled.

Buy Your New Fur Coats and Repair Your Old Fur Coats at a Real Furrier



J. WASSER

Reliable Furrier

221 N. WASHINGTON STREET

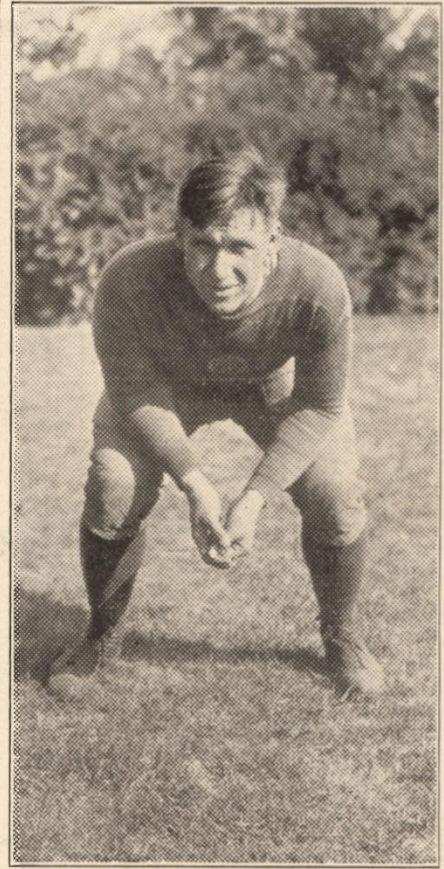
**NEVILLE'S
GOOD CLOTHES**

"The Friendly Store"

PLATTEN BUILDING

WEST GREEN BAY

ADAMS 378



BO MOLEND
Fullback

Bo Molenda broke into the football spotlight while at the University of Michigan with Benny Friedman. After playing with the New York Yankees for a year, he was induced by Coach Lambeau to accept a contract with the Green Bay Packers. Bo is a "well-poured" fullback and he makes use of these extra pounds of muscle to gain ground. He was one of the stars on the Eastern trip and when the season was concluded, he received recognition on several of the All-Professional teams

**GREEN BAY
PEERLESS CO.**

Distributors For

PEERLESS MOTOR CARS

415 N. Jackson Phone Adams 503

Repairs and Body Work

<p>COMPLIMENTS OF BROADWAY HOTEL 310 DOUSMAN ST. PHONE ADAMS 2980</p>	<p>WISCONSIN FISHING CO. WHOLESALE FISH LIVE CRAWFISH IN SEASON Phone Adams 176 Green Bay, Wis.</p>
<p>VAN'S HARDWARE Exclusive Agency Estate Heatrola SERVES, SAVES, SATISFIES 408 DOUSMAN ST. PHONE ADAMS 848-W</p>	<p>DASHNIER'S CIGAR STORE Soda Fountain, Cigars, Candies, Newspapers - "BILLIARDS" - Magazines 226 E. Walnut St. Phone Adams 1905</p>



HURDIS McCRARY
Halfback

McCrary came to the Packers from the University of Georgia two years ago and although he was a new hand at the professional game last season, he developed into one of the best ball carriers on the team. McCrary joined the All-American ranks while at Georgia in 1927 and 1928. "Mac" is gifted with an unlimited amount of speed which he mixes in nicely with his weight. He is a good receiver of forward passes and several times when called upon last year, he carried the slants over for touchdowns.

ICE REFRIGERATION

Safe — Silent
 Costs Less

Provides Clear Table Ice

Protects Food Flavors

SAVE WITH ICE

Miller-Rasmussen

Keep You Cool and Warm

ICE — COAL

Wholesale and Retail

PHONE ADAMS TWO



FRANK HANNY
Tackle

"Duke" Hanny is well known to Green Bay fans for his work with the Chicago Bears in 1925, '26, and '27. A giant in size and possessing of fine temperament for a professional player, Hanny was an inspiration to other Bear linemen. In 1928 he was a star with the Providence Steamrollers when the team won the national championship. He again played great ball with Providence in 1929, but at the close of the season he asked for his release as he wanted to play in the West and be near his business.

BEERNTSEN CANDY SHOP

Home Made Candies, Sodas and Sandwiches

235 North Broadway
 Phone Adams 1488

SIGNALS!

72-R-2!

10 MILES TO GO!

A familiar call heard many times this Summer by Blood, McCrary and Perry, who spent their vacations making yards of concrete road for the Edward Schuster Company, Denmark.

TELEPHONE 72-R-2

General Road Construction

COMPLIMENTS OF

Cohodas Bros. Co.

WHOLESALE
FRUITS and
PRODUCE

LA PLANT TIRE & RADIO CO.

HOOD TIRES

"Free Road Service"

Battery and Radio Service

Phone Adams 1001

1300 MAIN ST.

GREEN BAY HARDWARE CO.

"Green Bay's Leading Hardware
Store"

107 W. Walnut St.

COMPLIMENTS OF

Joseph F. Rothe Foundry Co.

GREEN BAY, WIS.

"Quality Castings"



Summit Toilet Tissue
a soft, highly
absorbent tissue

Evergreen Paper Towels
excellent for
even the most tender
skin



Hoberg Paper & Fibre Co.

Green Bay, Wis.

Mfgrs. of High Quality Toilet Tissues and Inter-Folded Towels

"IT PAYS TO LOOK WELL"

The Sanitary Laws Are Made For Your Protection.

Patronize organized barber shops
Members of The Associated Master Barbers of America.

William Barrett,
519 Main St.
Anton Behrendt,
703 S. Broadway
Anton Colle,
612 Main St.
Roy Dixon,
313 Main St.
Fred Erdman,
711 S. Broadway
Bernard Kabat,
108 S. Broadway
John Keiper,
Broadway Hotel
Lloyd Witcpalek,
702 Main St.

Kocian & Bitters
302 W. Walnut St.
Arnold Kuhn,
427 Main St.
Phyl. Janelle,
213 Pine St.
Fabian LaPlant,
1372 Main St.
Mose LeMeiux,
1353 Main St.
Harold Lytie,
409 W. Walnut St.
Mike Mathys,
107 East Walnut St.
Jerome Massey,
802 S. Webster Ave.

John Peterman,
1300 East Mason St.
William Mauer,
Union Hotel, De Pere
John Morgan,
209 S. Washington St.
A. L. Nelson,
1065 Shawano Ave.
Harry Sharpe,
411 Dousman St.
Hiram Smith,
206 E. Walnut St.
Sprague & James,
223 N. Adams St.
Claude Thompson,
356 Main Ave. DePere
Frank Van Deuren,
930 Main St.

Soquet Barber Supply Co.; Jack's Towel & Linen Supply, Associate Members

FOR
Permanent COFFEE
SATISFACTION TRY



At All Good
INDEPENDENT GROCERS