

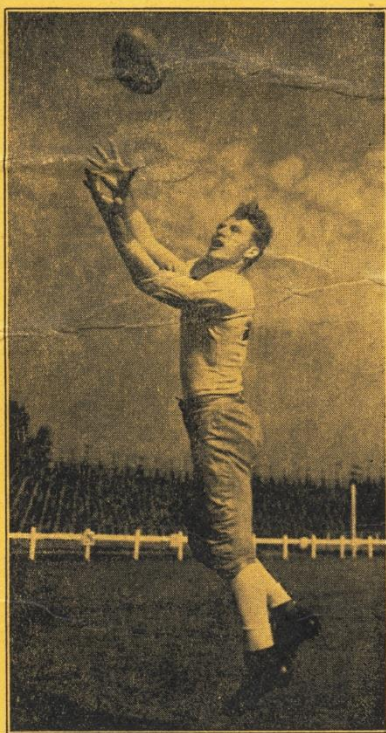
Packers 62 Diesels 14

OFFICIAL
PROGRAM

PRICE
10 CENTS

Professional Football

"MR. FOOTBALL"



DON HUTSON

**GREEN BAY
PACKERS**

VS.

**NEW LONDON
DIESELS**



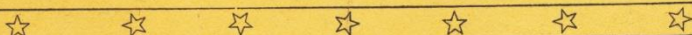
MUZZY FIELD
BRISTOL, CONN.



Sunday, Nov. 28, 1943



Kickoff at 2:15 P.M.



SPONSORED BY
NEW DEPARTURE RECREATIONAL COUNCIL

The entire net proceeds from this game will be devoted by the council to a program of recreation for New Departure war workers.

All receipts from the sale of this program, less cost, will go into the cigarette fund of the New Departure Mutual Aid Association.

EVERY PROGRAM SOLD MEANS ANOTHER PACK
OF SMOKES FOR SOME LAD IN UNIFORM



Green Bay Packers

LE	LT	LG	C	RG	RT	RE
Hutson	Ray	Kuusisto	Flowers	Goldenberg	Adams	Jacunski
14	44	45	35	43	27	48

QB
Craig
54

LHB
Canadeo
3

FB
Fritsch
64

RHB
Uram
42

E. L. "Curly" Lambeau, Coach — Richard "Red" Smith, Asst. Coach

NO.	NAME	POS.	WEIGHT	HEIGHT	AGE	COLLEGE
3	Tony Canadeo	Back	195	6	24	Gonzaga
7	Joel Mason	End	200	6	29	Western State
8	Bob Kahler	Back	200	6-3	26	Nebraska
14	Don Hutson	End	178	6-1	30	Alabama
16	Lou Brock	Back	195	6	25	Purdue
18	Tony Falkenstein	Back	210	5-10	28	St. Mary's
21	Pete Tinsley	Guard	205	5-8	28	Georgia
22	Dick Evans	End	210	6-3	26	Iowa
23	James Lankas	Back	225	6-2	25	St. Mary's
24	Joe Laws	Back	188	5-9	32	Iowa
27	Chet Adams	Tackle	240	6-3	27	Ohio
29	Charles Brock	Center	210	6-2	27	Nebraska
33	Glen Sorenson	Guard	225	6	22	Utah State
35	Bob Flowers	Center	215	6-2	26	Texas Tech
40	Adolph Schwammel	Tackle	230	6-3	30	Oregon State
42	Andy Uram	Back	190	5-11	28	Minnesota
43	Charles Goldenberg	Guard	220	5-10	32	Wisconsin
44	Buford Ray	Tackle	250	6-6	28	Vanderbilt
45	Bill Kuusisto	Guard	230	6	25	Minnesota
46	Sherwood Fries	Guard	238	6-1	22	Colorado State
47	Paul Berezney	Tackle	220	6-2	27	Fordham
48	Harry Jacunski	End	198	6-2	27	Fordham
51	Irv Comp	Back	192	6-2	24	St. Benedict
54	Larry Craig	End	208	6	26	South Carolina
63	Ben Starrett	Back	215	5-11	25	St. Mary's
64	Ted Fritsch	Back	205	5-11	22	Stevens Point
72	Forrest McPherson	Center	248	5-11	30	Nebraska
75	Milburn Croft	Tackle	298	6-3	22	Ripon

ROOSTER LINEUPS

New London Diesels

LE Perry 32 LT Pudluski 37 LG Stevens 23 C Wieczorek 17 RG Brennan 18 RT Olsen 42 RE O'Grady 15

QB
Capt. Mitchell
12

LHB Austin 39 FB St. Peter 9 RHB Burian 33

Coach, John Cawley, Scranton U. — Manager, J. Joseph Allen
Assistant Manager, Guido Bartolucci — Trainer, Phil Penston

NO.	NAME	POS.	WEIGHT	HEIGHT	COLLEGE
3	Al Monahan	Back	165	5-11	North Carolina
4	Joe Kane	End	192	6-1	Pittsburgh
9	Frank St. Peter	Back	185	5-11	Boston U.
12	Fred Mitchell	Back	195	6-10	U. of Conn.
14	Nello Burian	Back	190	5-11	Temple
15	Bob O'Grady	End	188	6-5	U. of Conn.
16	Ray Bartolucci	Back	165	5-10	Chapman Tech.
17	Zig Wieczorek	Center	205	6-1	U. of Conn.
18	Joe Brennan	Guard	202	6	Scranton U.
21	Mike Wallace	End	197	6-1	Scranton U.
22	Bob Waterman	Tackle	195	5-11	Norwich
31	Joe Langer	Center	215	6-3	Long Island U.
32	Jack Perry	End	209	6-3	Wisconsin
35	Jim McKenna	Back	217	6	Chapman Tech.
37	Chet Pudluski	Tackle	215	6-1	Villanova
38	Jack Eddy	Guard	225	6-1	California
39	Dave Austin	Back	213	6-4	North Carolina
40	Bill Kane	Back	212	6-1	St. Mary's
47	Ed. Pointkowski	Tackle	260	6-5	Minnesota
23	Ed. Stevens	Guard	192	5-10	Chapman Tech.
42	Norman Olsen	Tackle	215	6-3	Alabama
20	Enrico Uguione	End	200	6	Kentucky



Our First Baby

Today's football game, which we hope you'll enjoy every minute of, marks the first effort of the New Departure Recreational Council to provide sport and fun for people giving their all on the war production front. More is coming. We hope you'll like it.

The Recreational Council has a basketball team in the works — a pretty good one, we think — and plans, now being worked out, for other activities directed toward giving men and women war workers a little relaxation or a chance to limber muscles concentrated on making equipment important to victory and the return of our boys from world battlefronts.

New Departure is busy around the clock getting out desperately needed ball bearings. It is bigger than ever it was, despite the loss of more than 4,000 men and women employes to the fighting forces, but it still has room for more—many more—yes, several thousand more.

It is because New Departure has grown so much, and will continue to increase its stature, probably never to retrogress, that a program such as that being developed by the Recreational Council is felt to be needed — and permanently. The council has a definite mission to perform which it hopes will succeed and extend into times of peace, and have at least a little to do with adding zest to the home-front fight for an early and triumphant end to the war.

NEW DEPARTURE RECREATIONAL COUNCIL

H. L. BROPHY WM. E. KANE
BARBARA AYER L. A. LANNING
IRA BACHAND

No 7477
