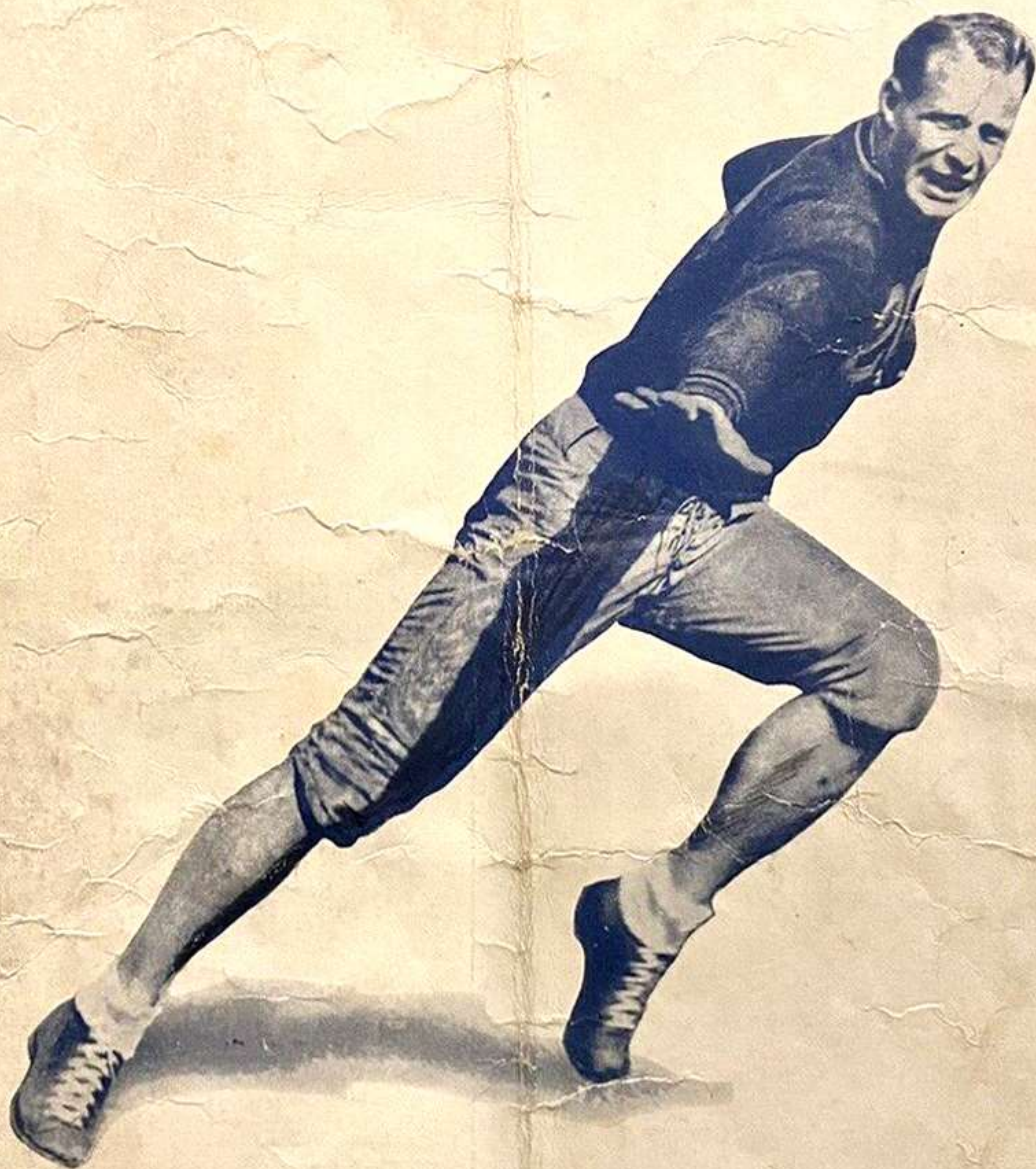


Price 10 cents

GREEN BAY PACKERS
• vs. •
BOSTON REDSKINS



CLIFF BATTLES
Boston's Great Runner

POLO GROUNDS

Sunday, December 13, 1936

Playoff Game for Ed. Thorp Memorial Trophy

Two Winners



for long—
lasting sparkle
in your long
tall drinks

CANADA DRY

The Champagne of Ginger Ales

COMPLETE INDIVIDUAL STATISTICS TWENTY LEADING GROUND GAINERS

Player and Team	Yds. Gained	Attempts	Average
Tuffy Leemans, New York...	830	206	4.0
Ace Gutowsky, Detroit.....	827	191	4.3
Dutch Clark, Detroit.....	628	123	5.1
Cliff Battles, Boston.....	614	176	3.4
Geo. Grosvenor, Bears-Cards.	612	170	3.6
Ernie Caddel, Detroit.....	580	91	6.3
Bronko Nagurski, Bears.....	529	122	4.3
Bobby Wilson, Brooklyn....	505	104	4.8
Clarke Hinkle, Green Bay...	476	100	4.7
Kink Richards, New York....	421	114	3.6
Pug Rentner, Boston.....	404	95	4.2
Suede Hanson, Philadelphia..	359	119	3.0
Ray Nolting, Bears.....	352	76	4.6
Beattie Feathers, Bears.....	350	97	3.6
Stumpy Thomason, Phila....	333	109	3.0
Warren Heller, Pittsburgh...	332	106	3.1
Dave Smukler, Philadelphia..	321	99	3.2
George Sauer, Green Bay....	305	94	3.2
Joe Laws, Green Bay.....	296	50	5.9
Bill Shepherd, Detroit.....	292	74	3.9

LEADING POINT SCORERS

Player and Team	Touch.	P.A.T.	F.G.	Tot. Pts.
Dutch Clark, Detroit.....	7	19	4	73
Jack Manders, Bears.....	4	17	7	67
Don Hutson, Green Bay....	9	0	0	54
Cliff Battles, Boston.....	7	0	0	42
Bill Hewitt, Bears.....	7	0	0	42
Riley Smith, Boston.....	2	14	4	38
Ralph Kercheval, Brooklyn..	3	4	5	37
Ace Gutowsky, Detroit.....	6	0	0	36
Clarke Hinkle, Green Bay...	5	1	0	31
Ernie Caddel, Detroit.....	5	0	0	30
George Grosvenor, Cards....	5	0	0	30
Ernie Smith, Green Bay....	0	17	4	29
Armand Niccolai, Pitts....	0	7	7	28
Harry Ebding, Detroit.....	4	0	0	24
Bobby Wilson, Brooklyn....	4	0	0	24
Taddon Manton, New York...	1	15	0	21
John Blood, Green Bay....	3	1	0	19
Bronko Nagurski, Bears.....	3	1	0	19

LEADING FORWARD PASSERS

Player and Team	No. Passes	Com- pleted	Inter- cepted	Yds. Ave.
Arnold Herber, Green Bay...	173	*77	*1239	13 44%
Ed Matesic, Pittsburgh.....	138	64	850	16 46%
Ed Danowski, New York....	104	47	515	10 45%

NOTE—* denotes new League record.

LEADING PASS RECEIVERS

Player and Team	No. Caught	Yards Gained
Don Hutson, Green Bay....	*34	*536
Bill Smith, Cardinals.....	20	414
Ernie Caddel, Detroit.....	19	150
Wayne Miller, Boston.....	18	211
Edgar Manske, Philadelphia..	17	325

NOTE—* denotes new National League record.

FIELD GOALS (All Placements)

Player and Team	No. Kicked	Tot. Yds.	Longest
Jack Manders, Bears.....	7	185	36
Armand Niccolai, Pittsburgh.	7	183	41
Ralph Kercheval, Brooklyn..	5	163	50
Paul Engbretsen, Green Bay.	5	134	40

Herber Breaks Records

Four new league player records were established during the 1936 National Football League Season and marks in all departments of the game surpassed 1935 totals according to individual statistics compiled by the league. The outstanding individual achievement of the season was made by Arnold (Flash) Herber, Green Bay Packers and St. Regis College, who shattered two league marks in forward passing as he practically pitched his team into the playoff.

Herber's 77 completions in 173 tosses is the most completed by an individual during a league season. These completions were good for a total of 1239 yards which shattered the old mark of 963 made by Harry Newman with the Giants in 1933. This total is believed to be a record in the annals of American football history.

The 77 completions were more than completed by any entire TEAM in the league except one. The 1239 yards gained on the aeriels surpassed the yards gained on passes by any entire TEAM in the circuit. Don Hutson, formerly of Alabama, caught 34 of Herber's tosses for 536 yards thereby giving him two new league records. The former marks

were 26 catches for 432 yards by Tod Goodwin of the Giants in 1935.

Earl (Dutch) Clark, Detroit Lions and formerly of Colorado College, was the only individual to retain his 1935 leadership. His 73 points topped the scorers and was 18 points better than his 1935 total. Jack Manders, Bears, was

second with 62 points which was also better than Clark's 1935 total of 55. Hutson was third with 54.

Tuffy Lee-mans, New York Giants recruit from George Washington U., top-the ground gainers with 830 yards as eight players surpassed the 1935 total of 499. Ace Gutowsky, Detroit, was only three yards be

hind in second with 827. Dutch Clark, Cliff Battles, Boston; and George Grosvenor, Cardinals, follow in order with 628, 614 and 612 yards. Ernie Cadel, Detroit; Bobby Wilson, Brooklyn, and Bronko Nagurski, Bears, also passed last year's totals.

Jack Manders, Bears, and Armand Niccolai, Pittsburgh, tied with seven field goals each for honors in that department. This was one more than kicked by last year's leaders. Ed Matesic, Pittsburgh, and Ed Danowski, Giants, were second and third best forward passers.

[Complete Records on opposite page]



ARNOLD HERBER
Packers Great Passer

FINAL TEAM STATISTICS

The Green Bay Packers football team finished the regular 1936 National League schedule with team titles in scoring and forward passing, while Boston was the best defensive team for the second year, according to final team statistics.

The Packers scored 248 points, 54 more than tallied by the Bears in 1935, and completed 108 out of 255 passes for a 42% average. Boston allowed opponent's only 2,168 yards on defense. Other leaders were the Detroit Lions which annexed the ground gaining honors and Chicago Bears team which had only 94 points scored against it.

Detroit broke the league ground gaining mark for a twelve game schedule by running up 3,703 yards. The record is 3,750 made by the Bears in 1934 in thirteen games. This is the first time in four years the Bears failed to annex the team offensive title.

The Bears and Packers finished second and third in ground gaining with 3,416 and 3,323 yards, while Detroit and Bears finished second and third in scoring with 235 and 222 points, respectively. Detroit, and Pittsburgh were second and third in forward passing with averages of 41% and 40%, each only one per cent behind its superior.

WESTERN DIVISION.

Team	Games	Y.G.	O.Y.G.	F.P.	P.C.	Pts.	O.P.
Green Bay.....	12	3323	2664	255	108	248	112
Chicago Bears.....	12	3416	3000	170	58	232	94
Detroit.....	12	3703	2479	146	61	235	102
Chicago Cardinals	12	2854	2725	183	68	74	143

EASTERN DIVISION.

Boston.....	12	2621	2168	214	77	149	110
Pittsburgh.....	12	2225	3032	198	81	98	187
New York.....	12	2751	2840	179	69	115	163
Brooklyn.....	12	1922	2798	141	43	92	161
Philadelphia.....	12	2068	2857	170	39	51	206

Teams in order of final league standing. Y.G.—Yards Gained. O.Y.G.—Opponent's Yards Gained. F.P.—Forward Passes. P.C.—Passes Completed. Pts.—Points. O.P.—Opponent's Points.

NATIONAL FOOTBALL LEAGUE FINAL STANDING OF THE CLUBS, 1936

Eastern Division

Teams	W.	L.	T.	Pct.
Boston.....	7	5	0	.583
Pittsburgh.....	6	6	0	.500
New York.....	5	6	1	.453
Brooklyn.....	3	8	1	.272
Philadelphia.....	1	11	0	.084

Western Division

Teams	W.	L.	T.	Pct.
Green Bay.....	10	1	1	.909
Chicago Bears.....	9	3	0	.750
Detroit.....	8	4	0	.666
Chicago Cards.....	3	8	1	.272

1936 RECORDS OF TWO TEAMS

GREEN BAY

Pts.	Opp. Pts.
10 Cardinals.....	7
3 Bears.....	30
24 Cardinals.....	0
31 Boston.....	2
20 Detroit.....	18
42 Pittsburgh.....	10
21 Bears.....	10
7 Boston.....	3
38 Brooklyn.....	7
26 New York.....	14
26 Detroit.....	16
0 Cardinals.....	0

248
Won 10, Lost 1, Tied 1.

BOSTON

Pts.	Opp. Pts.
0 Pittsburgh.....	10
26 Philadelphia.....	3
14 Brooklyn.....	3
0 New York.....	7
2 Green Bay.....	31
17 Philadelphia.....	7
13 Cardinals.....	10
3 Green Bay.....	7
0 Bears.....	26
30 Brooklyn.....	6
30 Pittsburgh.....	0
14 New York.....	0

149
Won 7, Lost 5.

THE ED THORP MEMORIAL

This is the fourth annual playoff for the Ed Thorp Memorial Trophy which carries with it the championship of the National Football League. The trophy was first put in play in 1933 to commemorate the memory of one of the greatest officials and friends pro football had in its early days.

The first playoff game was staged in Chicago between the Chicago Bears and the New York Giants, and that contest will live long in the memory of those who saw the two teams battle to a 23 to 21 decision with the Bears finally winning after the lead had changed hands seven times.

Then the next year the same two teams collided at the Polo Grounds and it was the Giants who staged a stirring last period rally to win out 30 to 16, as the New York squad took to sneakers in the second half of a bitter cold day that made the field a solid frozen surface.

The Giants were again in the playoff last fall but against the Detroit Lions this time, and were downed in Detroit, 26 to 7, as the weather again played a vicious role with snow and sleet making playing conditions almost intolerable.

Therefore today's playoff presents two teams who are making their first appearance in the playoff, and it also marks the first time that Boston has had a chance to clinch the National League title in its five years of competition in the pro circuit. Green Bay will be seeking its fourth such crown, for from 1929-31 the Packers reigned supreme and set a record of three straight that has never been equalled in the comparatively short life of the National League since its founding in 1922.



"Express your glee," the wolf greets, "squeal it I'm big and bad—and, boy, I feel it!"



CLEAR HEADS CALL FOR

© 1936 CALVERT-MARYLAND DISTILLING CO., IN BLENDED WHISKEY—95 PROOF—straight whisky only 75% grain neutral spirits. CALVERT'S "SPECIAL" in this product are 1 year and 3 months or more old 5% straight whisky 1 year and 3 months old 5% st.

LINE-UP AND NUMBERS OF BOTH TEAMS

Referee—W. G. CROWELL
Head Linesman—M. J. MEYER.

Umpire—BOB CAHN
Field Judge—WILLIAM HALLORAN.

GREEN BAY PACKERS—Players Roster, 1936

No.	Name	Position	Weight	Height	College
3	MILLER, PAUL	Back	175	5:10	So. Dakota State
4	SCHNEIDMAN, H.	Quarterback	205	5:10	Iowa
5	MONNETT, ROBERT	End	181	5:8 1/4	Michigan State
14	HUTSON, DON	End	180	6:1	Alabama
16	SAUER, GEORGE	Back	208	6:2	Nebraska
18	BRUDER, HENRY	Quarterback	197	6:0	Northwestern
22	GANTENBEIN, M.	End	208	6:0	Wisconsin
29	LAWS, JOE	Back	186	5:9	Iowa
33	CLEMENS, CAL	Quarterback	195	6:1	U. S. C.
38	HERBER, ARNOLD	Back	195	6:1	Regis
39	PAULEKAS, A.	Center	207	5:10	W. & J.
40	SCHERER, BERNARD	End	183	6:1	Nebraska
41	HINKLE, CLARK	Fullback	202	5:11	Bucknell
43	SVENDSEN, GEORGE	Center	224	6:4	Minnesota
51	EVANS, LOU	Guard	223	6:2	T. C. U.
52	ENGBRETSEN, PAUL	Guard	238	6:1	Northwestern
53	GORDON, LOU	Tackle	235	6:5	Illinois
54	JOHNSTON, CHESTER	Fullback	192	5:10	Marquette
55	BLOOD, JOHNNY	Quarterback	190	6:0	Minnesota
57	SCHWAMMEL, A.	Tackle	232	6:2 1/2	Oregon State
58	SEIBOLD, CHAMP	Tackle	230	6:4	Wisconsin
59	BUTLER, FRANK	Center	246	6:3	Michigan State
60	KEISLING, WALTER	Guard	248	6:3	St. Thomas
61	SMITH, ERNIE	Tackle	221	6:2	U. S. C.
63	GOLDENBERG, CHAS.	Quarterback	212	5:10	Wisconsin

Head Coach—Earl L. (Curley) Lambeau, Notre Dame

Asst. Coach—Richard (Red) Smith, Notre Dame

BOSTON REDSKINS

No.	Name	Position	Weight	Height	College
11	PINCKERT, ERNY	Halfback	195	6:0	So. California
12	BRITT, ED	Fullback	205	6:2	Holy Cross
13	JUSTICE, EDW.	Halfback	205	6:1	Gonzaga University
14	BUSICH, SAM	End	190	6:3	Ohio State University
15	BARBER, JAMES	Tackle	215	6:3	San Francisco Univ.
16	WIESENBAUGH, HENRY	Halfback	195	5:11	Pittsburgh University
17	EDWARDS, ("TURK")	Tackle	260	6:2	Washington State
18	KAHN, EDWIN B.	Guard	195	5:9	No. Carolina Univ.
19	MALONE, CHARLIE	End	200	6:4	Texas A. & M.
20	BATTLES, CLIFFORD	Halfback	195	6:1	W. Virginia Wesleyan
21	OLSSON, LESTER	Guard	220	6:0	Mercer University
22	O'BRIEN, GAIL	Tackle	220	6:1	University of Nebraska
23	IRWIN, DON	Back	200	6:0	Colgate
24	BAUSCH, FRANK J.	Center	215	6:3	Kansas University
25	TEMPLE, MARK	Halfback	175	5:10	University of Oregon
26	CARROLL, VIC	Tackle	215	6:3	University of Nevada
27	SIEMERING, LARRY	Center	210	6:3	San Francisco Univ.
29	KARCHER, JAMES N.	Guard	207	6:0	Ohio State University
30	TOSI, FLAVIO	End	195	6:2	Boston College
31	RENTNER, PUG	Halfback	195	6:1	Northwestern Univ.
32	McCHESNEY, BOB	End	195	6:2	U. of Cal. at L. A.
34	SINKO, STEVE	Tackle	230	6:4	Duquesne University
35	SMITH, RILEY	Quarterback	200	6:2	University of Alabama
36	SMITH, ED	Fullback	210	6:2	New York University
40	MILLNER, WAYNE	End	190	6:0	Notre Dame

Head Coach—Ray Flaherty

Calvert

WHISKIES

The pig says, "Why get in a fog?
Get CALVERT, and—don't be a hog!"



EXECUTIVE OFFICES: N. Y. C. CALVERT'S "RESERVE"
is this product is 3 years old; 18% straight whiskey 3 years
"BLACKBERRY WHISKY"—30 PROOF—straight whiskeys
15% straight whiskey; 75% grain neutral spirits; contents
10% whiskey 2 years old; 15% straight whiskey 3 years old.

INDIVIDUAL COMPARISONS

BOSTON

Player	Ball Carrying		AVERAGE
	Yds. Gained	Attempts	
Battles	614	176	3.49
Rantner	404	95	4.25
Britt	180	72	2.50
Pinckert	90	18	4.44
Irwin	78	17	4.6
E. Smith	39	7	5.55
R. Smith	26	30	1.0
Musick	10	6	2.33
Johnston	10	1	1.0
Wendenbough	9	3	3.0
	1,454	403	

Forward Passing

Player	Passes	Com-pleted	Yards Gained	Inter-cepted
Britt	44	18	204	5
Battles	52	18	242	6
Rantner	39	13	198	6
R. Smith	33	14	239	7
E. Smith	4	1	139	0
Musick	3	0	0	1
Irwin	1	1	9	0
	214	77	1,102	23

Pass Receivers

Player	No. Caught	Yds. Gained	Player	No. Caught	Yds. Gained
Miller	18	211	Tom	4	70
Malone	11	157	Rantner	3	33
Johnston	8	132	R. Smith	3	76
Britt	6	106	Wendenbough	3	37
Battles	6	103	Irwin	2	31
Musick	6	57	Pinckert	1	17
McChesney	5	62			
				77	1,102

Field Goals (All Placements)

Player	No. Kicked	Total Yards	Longest
R. Smith	4	88	14
Johnston	1	14	12
E. Smith	1	12	12
	6	114	35

Scoring

Player	Touch.	P.A.T.	F.G.	Total
Battles	7	0	0	42
R. Smith	2	14	4	38
Rantner	2	0	0	18
Irwin	2	0	0	12
Husack	1	1	1	10
Carroll	1	0	0	6
Malone	1	0	0	6
Summers	1	0	0	6
Tom	0	0	1	3
E. Smith	0	0	1	2
Safety against Green Bay	19	15	6	149

GREEN BAY

Ball Carrying

Player	Yds. Gained			Attempts			Ave.
	Yds. Gained	Attempts	Ave.	Yds. Gained	Attempts	Ave.	
Hinkle	476	100	4.76	Goldenberg	9	6	1.5
Sauer	305	94	3.24	Mattson	2	1	2.0
Laws	296	50	5.92	Hutson	3	1	3.0
F. Miller	277	52	4.36	Bruder	7	4	1.75
Monnett	224	104	2.15	Clemens	8	3	2.66
Johnston	110	42	2.6	Herber	32	20	1.6
Blood	65	13	5.0				
				1,664	490		

Forward Passing

Player	No. Passes	Com-pleted	Yds. Gained	Inter-cepted
Herber	173	77	1,239	13
Monnett	52	20	280	2
Mattson	12	4	32	2
Blood	6	3	20	0
Sauer	4	2	26	1
Hinkle	2	1	10	0
Laws	4	1	22	0
Clemens	1	0	0	0
Miller	1	0	0	1
	255	108	1,629	19

Pass Receivers

Player	No. Caught	Yds. Gained	Player	No. Caught	Yds. Gained
Hutson	34	536	Becker	5	66
Gantenbein	15	221	Schneidman	3	68
Monnett	13	169	Bruder	2	23
Laws	10	132	Scherer	2	25
Miller	8	113	Johnston	2	11
Blood	7	147	Clemens	1	18
Sauer	6	110			
				108	1,629

Field Goals (All Placements)

Player	No. Kicked	Total Yards	Longest
Engelbreten	5	134	40
E. Smith	4	126	38
Schwammel	1	26	26
	10	286	40

Scoring

Player	Touch.	P.A.T.	F.G.	Total
Hutson	9	0	0	54
Hinkle	5	1	0	31
E. Smith	5	17	4	29
Blood	3	1	0	19
Laws	3	0	0	18
Miller	3	0	0	18
Sauer	3	0	0	18
Engelbreten	0	2	5	17
Schwammel	0	5	1	8
Becker	0	0	0	6
Gantenbein	1	0	0	6
Johnston	1	0	0	6
Scherer	1	0	0	6
Schneidman	1	0	0	6
Monnett	0	3	0	3
Clemens	0	1	0	1
Safety against New York	31	30	10	248

The National Football League

RULES OF MAJOR LEAGUE FOOTBALL SUMMARIZED BY WILFRID SMITH

Professional football, in the past three seasons, has altered the code of rules under which colleges and universities play the game. The changes have not been numerous but they have been important.

The most important change permits forward passes to be thrown from any point behind the scrimmage line. The college rule permits forward passes from any point FIVE yards behind the scrimmage line.

In professional football the goal posts are on the goal lines.

Professional football declined to adopt the "dead ball" rule of the collegiate code.

Flying blocks and flying tackles are permitted in the professional game. The professional rule against clipping, that is, knocking down an opponent from the rear, is strictly enforced. The penalty is loss of 25 yards, as compared with the collegiate rule which penalizes infractions with the loss of 15 yards.

Professional players may be stationed any place on the field so long as they do not advance within 10 yards of the ball before it is kicked.

At the kickoff, the pros may kick from a dirt tee.

Substitute players may communicate with their teammates immediately on entering the game. Coaches must be notified when the limit of three times out have been taken in a half.

When the ball carrier is run out of bounds or is tackled at any point within 15 yards of the side line, the ball will be placed in play at a corresponding point 15 yards from the side of the field.

Offside penalties on the defense within its own 10 yard line have been minimized. Instead of loss of five yards, customary rule, the penalty in this area now is half the distance to the goal.

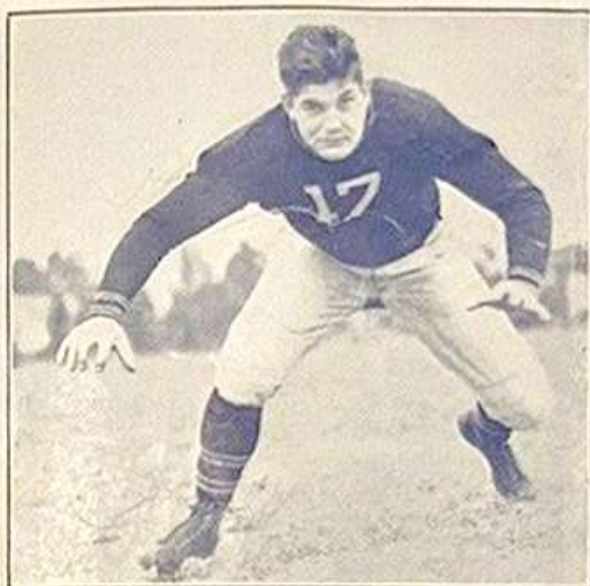
Here are the two most important changes in the pro rules for this fall:

1. A fumbled ball, except fumbles resulting from lateral passes, may be advanced by either team, no matter whether the ball strikes the ground or not. On fumbled laterals, the rule remains the same. The offense may recover and advance; the defense only may recover unless the ball is caught in the air. Then it may be advanced. Fumbled kicks may be recovered by the kicking team. They can not be advanced unless the receiver of the kick gains possession and then fumbles when tackled.

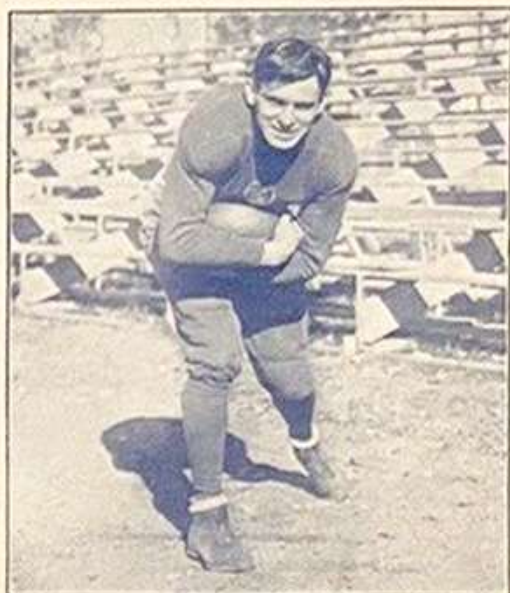
2. The penalty for two forward passes on the same down has been changed. In the past there have been several instances where a forward pass was completed successfully and after the ball had been advanced for a long gain, an attempted lateral pass actually became a second forward pass. Under the collegiate rule the ball is brought back to the point at which it originally was put into play. The new professional rule provides for a loss of FIVE yards from the point at the second and illegal forward pass.

A second incomplete forward pass in the end zone constitutes a touchback and loss of the ball to opponents on their 20-yard line. This is the rule in the collegiate code. It also is the professional rule unless the second incomplete pass into the end zone is thrown when the ball was put into play from a point back of the opponents' 20 yard line. In this case the ball passes over to the opponents at that point rather than the 20 yard line.

STARS OF OPPOSING TEAMS



TURK EDWARDS
Boston Tackle



JOHN BLOOD
Packers Back

COAL

FUEL OIL

COKE

MARA FUEL COMPANY, INC.

EXECUTIVE OFFICES

11 WEST 42ND STREET NEW YORK, N. Y.

Telephone CHickering 4-3400

Deliveries to Manhattan-Bronx-Brooklyn and Queens

WHOLESALE
RETAIL

QUALITY
SERVICE
QUANTITY

INDIVIDUAL COMPARISONS

BOSTON

Player	Ball Carrying		AVERAGE
	Yds. Gained	Attempts	
Battles	614	176	3.49
Rantner	404	95	4.25
Britt	180	72	2.50
Pinckert	90	18	4.44
Irwin	78	17	4.6
E. Smith	39	7	5.55
R. Smith	26	30	1.0
Musick	10	6	2.33
Johnston	10	1	1.0
Wendenbough	9	3	3.0
1,454		403	

Forward Passing

Player	Passes	Com-pleted	Yards Gained	Inter-cepted
Rantner	39	13	198	6
R. Smith	33	14	239	7
E. Smith	1	1	139	0
Musick	3	0	0	1
Irwin	3	0	0	1
214		77	1,102	23

Pass Receivers

Player	No. Caught	Yds. Gained	Player	No. Caught	Yds. Gained
Malone	11	157	Rantner	3	33
Johnston	8	132	R. Smith	3	76
Britt	6	106	Wendenbough	3	37
Battles	6	103	Irwin	2	31
Musick	6	57	Pinckert	1	17
McCormack	5	62			
				77	1,102

Field Goals (All Placements)

Player	No. Kicked	Total Yards	Longest	
				R. Smith
Johnston	1	14	12	
E. Smith	1	12	12	
		6	114	35

Scoring

Player	Touch.	P.A.T.	F.G.	Total
R. Smith	2	14	4	38
Rantner	2	0	0	18
Irwin	2	0	0	12
Husack	1	1	1	10
Carroll	1	0	0	6
Malone	1	0	0	6
Summers	1	0	0	6
Tom	0	0	1	3
E. Smith	0	0	1	2
Safety against Green Bay	19	15	6	149

GREEN BAY

Ball Carrying

Player	Yds. Gained			Player	Yds. Gained		
	Yds. Gained	Attempts	Ave.		Yds. Gained	Attempts	Ave.
Hinkle	476	100	4.76	Goldenberg	9	6	1.5
Sauer	305	94	3.24	Mattson	2	1	2.0
Laws	296	50	5.92	Hutson	3	1	3.0
F. Miller	277	52	4.36	Bruder	7	4	1.75
Monnett	224	104	2.15	Clemens	8	3	2.66
Johnston	110	42	2.6	Herber	32	20	1.6
Blood	65	13	5.0				
				1,664	490		

Forward Passing

Player	No. Passes	Com-pleted	Yds. Gained	Inter-cepted	
					Herber
Monnett	52	20	280	2	
Mattson	12	4	32	2	
Blood	6	3	20	0	
Sauer	4	2	26	1	
Hinkle	2	1	10	0	
Laws	1	1	22	0	
Clemens	1	0	0	0	
Miller	1	0	0	1	
		255	108	1,629	19

Pass Receivers

Player	No. Caught	Yds. Gained	Player	No. Caught	Yds. Gained
Gantenbein	13	169	Schneidman	3	68
Laws	10	132	Bruder	2	23
Miller	8	113	Scherer	2	15
Blood	7	147	Johnston	2	11
Sauer	6	110	Clemens	1	18
				108	1,629

Field Goals (All Placements)

Player	No. Kicked	Total Yards	Longest	
				Engelbreten
E. Smith	4	126	38	
Schwammel	1	26	26	
		10	286	40

Scoring

Player	Touch.	P.A.T.	F.G.	Total
Hinkle	5	1	0	31
E. Smith	5	17	4	29
Blood	3	1	0	19
Laws	3	0	0	18
Miller	3	0	0	18
Sauer	3	0	0	18
Engelbreten	0	2	5	17
Schwammel	0	5	1	8
Becker	0	0	0	6
Gantenbein	1	0	0	6
Johnston	1	0	0	6
Scherer	1	0	0	6
Schneidman	1	0	0	6
Monnett	0	3	0	3
Clemens	0	1	0	1
Safety against New York	31	30	10	248

The National Football League

RULES OF MAJOR LEAGUE FOOTBALL SUMMARIZED BY WILFRID SMITH

Professional football, in the past three seasons, has altered the code of rules under which colleges and universities play the game. The changes have not been numerous but they have been important.

The most important change permits forward passes to be thrown from any point behind the scrimmage line. The college rule permits forward passes from any point FIVE yards behind the scrimmage line.

In professional football the goal posts are on the goal lines.

Professional football declined to adopt the "dead ball" rule of the collegiate code.

Flying blocks and flying tackles are permitted in the professional game. The professional rule against clipping, that is, knocking down an opponent from the rear, is strictly enforced. The penalty is loss of 25 yards, as compared with the collegiate rule which penalizes infractions with the loss of 15 yards.

Professional players may be stationed any place on the field so long as they do not advance within 10 yards of the ball before it is kicked.

At the kickoff, the pros may kick from a dirt tee.

Substitute players may communicate with their teammates immediately on entering the game. Coaches must be notified when the limit of three times out have been taken in a half.

When the ball carrier is run out of bounds or is tackled at any point within 15 yards of the side line, the ball will be placed in play at a corresponding point 15 yards from the side of the field.

Offside penalties on the defense within its own 10 yard line have been minimized. Instead of loss of five yards, customary rule, the penalty in this area now is half the distance to the goal.

Here are the two most important changes in the pro rules for this fall:

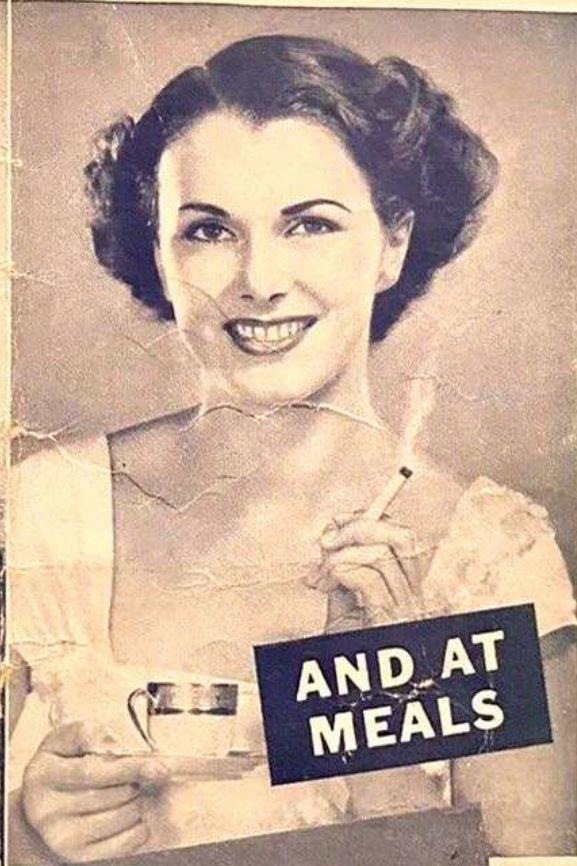
1. A fumbled ball, except fumbles resulting from lateral passes, may be advanced by either team, no matter whether the ball strikes the ground or not. On fumbled laterals, the rule remains the same. The offense may recover and advance; the defense only may recover unless the ball is caught in the air. Then it may be advanced. Fumbled kicks may be recovered by the kicking team. They can not be advanced unless the receiver of the kick gains possession and then fumbles when tackled.

2. The penalty for two forward passes on the same down has been changed. In the past there have been several instances where a forward pass was completed successfully and after the ball had been advanced for a long gain, an attempted lateral pass actually became a second forward pass. Under the collegiate rule the ball is brought back to the point at which it originally was put into play. The new professional rule provides for a loss of FIVE yards from the point at the second and illegal forward pass.

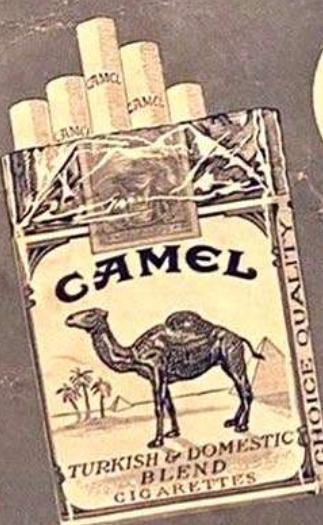
A second incomplete forward pass in the end zone constitutes a touchback and loss of the ball to opponents on their 20-yard line. This is the rule in the collegiate code. It also is the professional rule unless the second incomplete pass into the end zone is thrown when the ball was put into play from a point back of the opponents' 20 yard line. In this case the ball passes over to the opponents at that point rather than the 20 yard line.



**BETWEEN
MEALS**



**AND AT
MEALS**



SMOKE
Camels
FOR
DIGESTION'S
SAKE!

Copyright, 1936, R. J. Reynolds Tobacco Company

COSTLIER TOBACCOS!

Camels are made from finer, MORE EXPENSIVE TOBACCOS
... Turkish and Domestic ... than any other popular brand.
(Signed) R. J. REYNOLDS TOBACCO COMPANY, Winston-Salem, N. C.

The DeVinne-Brown Corporation
52 Duane Street, N. Y.