

Price 10 cents

JERSEY CITY GIANTS
• VS •
PATERSON PANTHERS



“HAP” BARNARD
Giants' Leading Pass Receiver

ROOSEVELT STADIUM, N. J.
Wednesday, October 12, 1938

Jersey's New Team



*How the Little Giants line-up: Front Row, reading from left, Hap Barnard, John Moffitt, Enio Conti, Milt Singer, Pete Owens, Tuby Garland, Walt Singer.
Back Row: Dutch Kline, Ken Strong, Dick Vitullo, Doug Locke.*

Announcement ↪

The Jersey City Football Giants team in the American Football Association represents many months of planning to evolve the best system to insure this city's thousands of rabid sports fans a championship eleven.

Football is a rugged sport. That is one salient reason why it continues to gain immensely in national popularity. Football, however, is subject to weird breaks of fortune which often upset the best-laid plans. Barring unusual misfortunes, club officials are confident your team will win the league title this season.

In conclusion, club officials take this opportunity to express their sincere appreciation to Mayor Frank Hague, city officials, newspapers and all others who have cooperated so splendidly in the successful launching of the Jersey City Football Giants.

JOHN V. MARA, *President.*

GIANTS' COACH



BILL OWEN

CLEAR THE WAY



How Giant blockers make it possible for Howie Yeager, with ball, to go to town.

NEXT GAME HERE

Sunday October 23, 1938

Jersey City Giants vs. Union City Rams

BIG AND LITTLE

JERSEY CITY TWINS



Milt Singer and his brother Walt



James Moffitt, left, and Tuby Garland, biggest members of Giants' squad, wise crack with Doug Locke, smallest player in pro football.

PATERSON PANTHERS

Lineup and Numbers

Pilconis 8	Sadusky 11	Brunansky 18	Baltzell 0	Boyle 17	Zucks 20	Cox 9
Right End	Right Tackle	Right Guard	Center	Left Guard	Left Tackle	Left End
Barnes 7 Quarterback						
Vollmer 24 Right Halfback			Miller 22 Fullback		Martin 3 Left Halfback	

PATERSON PANTHERS ROSTER

No.	Name	Position	Weight	College
0	Baltzell, "Bob"	Center	235	Southwestern
1	Kaplan, "Horse"	Guard	218	Western Maryland
2	Biancone, Johnny	Back	168	Oregon State
3	Martin, Frank	Back	191	Brooklyn College
5	Novotny, "Will"	Center	205	Syracuse
6	Ippolito, Jim	End	200	Temple
7	Barnes, Fred	Back	185	Pennsylvania
8	Pilconis, Joe	End	190	Temple
9	Cox, "Bob"	End	190	Ohio State
10	Kennedy, "Ed"	End	190	Nebraska
11	Sadusky, Al	Tackle	230	Western Maryland
12	Ditt, Art	Back	205	North Carolina
14	Dunney, Howard	End	202	N. Y. U.
15	Renzo, Vince	Back	185	Temple
16	Erickson, "Bill"	Tackle	223	Loyola
17	Boyle, "Knuckles"	Guard	233	Albright
18	Brunansky, Joe	Tackle	230	Duke
19	Karcis, Johnny	Back	210	Carnegie Tech
20	Zucks, Pete	Tackle	222	Texas
21	Bagley, Joe	Guard & Center	213	Connecticut State
22	Miller, "Phil"	Back	200	Bucknell
23	Rhodes, "Don"	Guard	242	W. & J.
24	Vollmer, Joe	Back	198	Columbia
...	Sandefeuver, "Dick"	Back	202	Purdue

Captain—Frank Kirkdeski (Lafayette)

Trainer—Harold "Doc" Loreng

Team Physicians—Dr. John DeRosa, Dr. Alvin Cortes, Dr. A. Delmauro

Copyright, 1958, P. Ballantine & Sons, Newark, N. J.

"HANDY" 1 2 3 RINGS -
WAY
TO
ORDER



GET IT?

BALL

• ON DR.

PATERSON PANTHERS

30 P. M.

JERSEY CITY GIANTS

Lineup and Numbers

W. Singer 37 Left End	Garland 43 Left Tackle	Conti 17 Left Guard	M. Singer 36 Center	Owens 55 Right Guard	Moffitt 30 Right Tackle	Barnard 32 Right End
Mattos 11 Quarterback						
Vitulo 39 Left Halfback		Strong 50 Fullback			D. Kline 14 Right Halfback	

JERSEY CITY GIANTS ROSTER

No.	Player	Position	Weight	Height	College
7	Moan, Kelly	Back	190	6:1	West Virginia
11	Mattos, Harry	Back	195	6:0	St. Mary's (Calif.)
13	Kline, Jiggs	End	195	6:1	Emporia
14	Kline, Dutch	Back	195	6:1	T. C. U.
17	Conti, Enio	Tackle	190	5:11	Bucknell
19	Ciampa, Al	Center	190	5:10	Columbia
21	Stancavage, Dom	Tackle	235	6:2	Fordham
23	Stanley, Bob	Guard	190	5:10	Princeton
27	Kaplan, Bernie	Guard	215	6:1	Georgetown
30	Moffitt, James	Tackle	225	6:4	Manhattan
32	Barnard, "Hap"	End	195	6:2	Edmond S. (Okla.)
33	Yeager, Howie	Back	183	6:1	Santa Barbara
35	Bateman, John	Guard	200	6:0	Columbia
36	Singer, Milton	Center	200	6:1	Syracuse
37	Singer, Walter	End	195	6:1	Syracuse
39	Vitulo, Dick	Back	220	6:0	Providence
43	Garland, Tubby	Tackle	225	6:2	Catawba
45	Waskowitz, Fritz	Back	172	5:10	Washington Univ.
50	Strong, Ken	Back	200	6:1	New York Univ.
53	Daly, Jack	End	190	6:1	Manhattan
54	Locke, Doug	Back	137	5:6	St. Mary's (Tex.)
55	Owens, Pete	Guard	205	6:0	Oklahoma
58	Duncan, Bill	Back	185	6:0	Oregon State

Coach—Bill Owen
Trainer—Paul Anderson
Team Physician—Dr. Patrick J. O'Brien

ANTINE'S ALE

UGHT • IN BOTTLES 12 OZ. AND FULL QUART • IN COPPER-COLORED CANS 12 OZ. AND FULL QUART •

Roots for Giants



HON. FRANK HAGUE

Mayor Hague's Message

Our new Football Giants gave an early impressive display of championship ability when they defeated Newark's Tornadoes, defending title-holders, 23 to 0, in their opening game in the American Association at this stadium on Oct. 2.

Judging by enthusiastic public reaction the Football Giants will prove to be what our sports fans have waited so patiently for—a championship winner.

The Jersey team is directed by Tim Mara, who founded the famous New York Giants back in 1925. Tim tells me our Jersey team compares very favorably with the Polo Grounds eleven.

It is my hope our sports fans will extend their usual generous support to the Jersey City Football Giants. They have my best wishes for success.

FRANK HAGUE, *Mayor.*

TRIPLE THREAT BACK

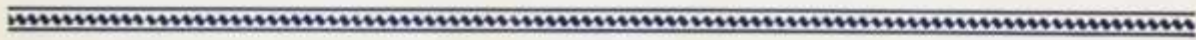


"DOUG" LOCKE
Giants' Mighty Midget

MOWS 'EM DOWN



DICK VITULLO
Strong Man in Jersey's Backfield



PERSONAL LOANS • AT LOW COST

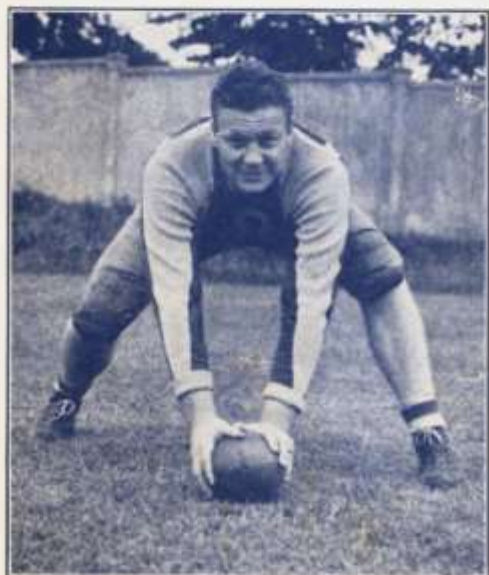
FOR EXAMPLE:

If You Borrow\$120.00
Cost of Loan for a Year..... 7.20

You Receive.....\$112.80
Which You Repay \$10, a Month for a Year.

THE TRUST COMPANY OF NEW JERSEY

Member Federal Deposit Insurance Corp.



BOB BALTZELL



"KNUCKLES" BOYLE

ALPHA PRODUCTS CO., Inc.

Metalware Manufacturers for
CATERERS, CONCESSIONAIRES,
HOTELS AND RESTAURANTS

113 UNIVERSITY PLACE
NEW YORK, N. Y.

Phone: GRamercy 7-2392

SIMONETTI & SULLIVAN

SPORTING GOODS
PHOTO SUPPLIES

New Jersey's Leading Sports Outfitters

137 MONTICELLO AVENUE
Jersey City, N. J.

Phone Delaware 3-6040

**"GET A LIFT
WITH A CAMEL"**



Copyright, 1935, R. J. Reynolds Tobacco Company, Winston-Salem, N. C.

COSTLIER TOBACCOS

Camels are a matchless blend of finer,
MORE EXPENSIVE TOBACCOS—Turkish and Domestic

