

Price 10 cents

BROOKLYN DODGERS
• VS •
CINCINNATI "REDS"



JOHN SIMMS "Shipwreck" KELLY
Brooklyn Dodgers

EBBETS FIELD
Sunday, October 15, 1933



The Brooklyn Dodgers

Since the return of professional football to Brooklyn in 1930, the Dodgers have always been rather weak at the end positions. This season, however, the Dodgers are unusually well fortified at this position. The purchase of Tom Nash from Green Bay has helped the Dodgers considerably and his addition to the squad will give it all of the end strength necessary.

Besides Nash, the Dodgers are now carrying Paul Riblett of the University of Pennsylvania, Harry Kloppenberg of Fordham, Van Rayburn of Tennessee and Johnny Lyons of Tulsa. It is also probable that Ollie Sansen, one of the finest defensive backs in the league, will be used at an end position where he is just as at home as he is in the backfield.

Nash is the type of end that Brooklyn has sought these many years. Big, fast and experienced, he has been considered the best end in the game for the last three years.

Tom is a product of the University of Georgia where he played three years of varsity ball after starring with the freshman team. He joined Green Bay in 1928 and was an outstanding player from the very start. He is now at the height of his career and should prove a valuable man to Brooklyn for several years.

Nash can do anything asked of him on a football field. His experience as a big league out-fielder has made of him one of the greatest pass receivers in the league. In fact, he is rated second only to Johnny Blood of Green Bay in this department by such eminent authorities as Benny Friedman and Red Cagle. He is shifty getting away for a pass and defensively he is brilliant in diagnosing an opposing offensive and in getting down the field under kicks.

An idea of how naturally Tom plays his position may be gained by his first day with the Dodgers. He was given a sketchy explanation of some of Brooklyn's pass plays and immediately stepped into the lineup and worked smoothly with the team, carrying out each of his assignments perfectly.

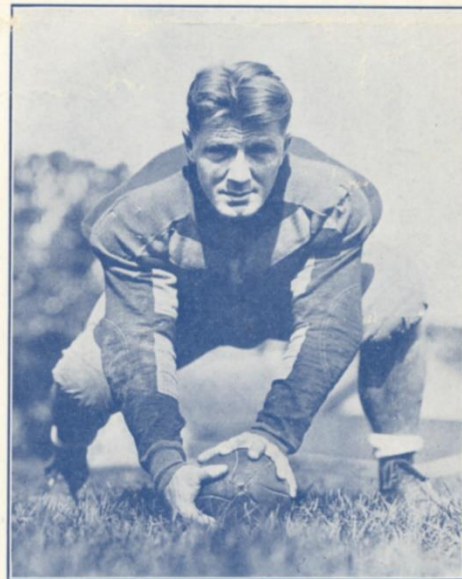
Tom played baseball with the Giants in 1929 and 1930, being farmed out to Buffalo of the International League each year. He was also with Atlanta of the Southern Association where he hit 360. He gave up his baseball career for football inasmuch as he is one of the highest salaried men on the professional gridiron.



OFFICIAL PROGRAM



TOM NASH
Brooklyn Dodgers



MAYNARD MORRISON
Brooklyn Dodgers



PROBABLE STARTING LINE-UP BROOKLYN DODGERS

Left End Lyons 3	Left Tackle Raskowski 70	Left Guard Rhea 25	Center Chalmers 15	Right Guard Jones 71	Right Tackle Mielziner 10	Right End Nash 17
Quarterback Friedman 1						
Left Halfback Thomason 7			Fullback Fisher 19		Right Halfback Douglas 26	

BROOKLYN DODGERS ROSTER

No.	Name	Position	Weight	Height	College
1	FRIEDMAN, BENNY	Back	182	5:10	Michigan
2	KELLY, JOHN SIMMS	Back	185	6:2	Kentucky
3	LYONS, JOHN	End	210	6:1	Tulsa
4	KARCIS, JOHN	Back	230	5:9	Carnegie Tech.
5	RAYBURN, VAN	End	180	6:1	Tennessee
6	RIBLETT, PAUL	End	184	5:10	U. of P.
7	THOMASON, STUMPY	Back	187	5:7	Georgia Tech.
8	SANSEN, OLIVER	Back	185	5:11	Iowa
10	MIELZINER, SAUL	Center	250	6:1½	Carnegie Tech.
11	ELY, HAROLD	Tackle	270	6:2	Iowa
12	CAGLE, C. K. (Red)	Back	170	5:10	Army
14	MORRISON, MAYNARD	Center	210	6	Michigan
15	CHALMERS, GEORGE	Center	195	6	N. Y. U.
16	LUBRATOVICH, MILO	Tackle	230	6:3	Wisconsin
17	NASH, TOM	End	205	6:3	U. of Georgia
19	FISHER, DICK	Back	190	5:9	Syracuse
20	GREENSHIELDS, DONN	Tackle	190	6:1	Penn State
21	RICHARDS, DICK	Back	194	6	Kentucky
22	HICKMAN, HERMAN	Guard	248	5:10	Tennessee
23	WORDEN, STUART	Guard	210	5:11	Hampden-Sydney
25	RHEA, HUGH	Guard	220	6:2	Nebraska
26	DOUGLAS, BEN	Back	185	6	Grinnell
30	KLOPPENBERG, HARRY	End	209	6:3	Fordham
70	RASKOWSKI, LEO	Tackle	215	6:2	Ohio State
71	JONES, BRUCE	Guard	222	6:1	Alabama

THE OFFICIALS

Referee—TOM THORP

Umpire—JOHN C. HENNESSEY

Head Linesman—FRANK (BUCK) O'NEILL

BROOKLYN DODGERS

FIRST HALF SECOND HALF
1st Quarter 2nd Quarter 3rd Quarter 4th Quarter

Touchdown				
Goal				
Goal (From Field)				
Safety				
Total				

FINAL SCORE BROOKLYN DODGERS.....

SCORING			
TOUCHDOWN.....	6	GOAL (From Field).....	3
GOAL (After Touchdown).....	1	SAFETY.....	2

PROBABLE STARTING LINE-UP CINCINNATI

Left End	Left Tackle	Left Guard	Center	Right Guard	Right Tackle	Right End
Braidwood	Munday	Blondin	Abruzzino	Caywood	Burdick	Crakes
40	43	34	39	52	46	48

Quarterback

Clark

45

Left Halfback

Pope

37

Fullback

Mulleneaux

44

Right Halfback

LeFebre

30

CINCINNATI ROSTER

No.	Name	Position	Weight	Height	College
30	LeFEBRE, GIL.....	Back	156	5:05	Navy Coast Sub.
34	BLONDIN, TOM.....	Guard	195	6:01	W. Va. Wesleyan
35	WORKMAN, BLAKE.....	Quarterback	186	6	Tulsa
36	SCHMIDT, KERMIT.....	End	195	5:11	California Aggies
37	POPE, LEWIS.....	Back	195	5:11	Purdue
38	ROGERS, JOHN.....	Center	197	5:11	Notre Dame
39	ABBRUSINO, FRANK.....	Center	190	6	Colgate
40	BRAIDWOOD, CHARLES.....	End	203	6	Chattanooga U.
41	LEE, HILARY.....	Guard	225	6	U. of Oklahoma
42	COTZINE, LES.....	Back	200	5:11	Davis-Elkins
43	MUNDAY, GEORGE.....	Tackle	204	6:02	Emporia Teachers
44	MULLENAUX, LEE.....	Back	215	6:02	Arizona U.
45	CLARK, MYERS.....	Quarterback	190	6	Ohio State
46	BURDICK, LLOYD.....	Tackle	254	6:05	Illinois
47	SQUYRES, SEAMAN.....	Back	200	6:02	Rice Institute
48	CRAKES, JOE.....	End	205	6:01	South Dakota
51	DRAVELING, LEO.....	Tackle	215	6:02	Michigan
52	CAYWOOD, LES.....	Guard	230	6	St. John's
53	PALM, MIKE.....	Quarterback	180	5:10	Penn State

CINCINNATI

	FIRST HALF		SECOND HALF	
	1st Quarter	2nd Quarter	3rd Quarter	4th Quarter
Touchdown				
Goal				
Goal (From Field)				
Safety				
Total				

FINAL SCORE CINCINNATI "REDS"

SCORING

TOUCHDOWN.....	6	GOAL (From Field).....	3
GOAL (After Touchdown).....	1	SAFETY	2

Summary of the More Important Penalties

1	Offside, both sides.....	No penalty
2	Offside.....	5 yards
3	Holding, etc., by defensive side.....	5 yards
4	Second or third incompletd forward pass during same series of downs....	5 yards
5	Man in motion—no shift.....	5 yards
6	Crawling.....	5 yards
7	Taking out time more than three times during half.....	5 yards
8	Running into kicker.....	5 yards
9	Substitute failing to report.....	5 yards
10	Unreasonable delay in putting ball in play.....	5 yards
11	Starting forward before ball.....	5 yards
12	Fair catch, taking more than two steps	5 yards
13	Attempt to draw apponents offside....	5 yards
14	Interference with opponents before ball in play.....	5 yards
15	Illegal tackling.....	5 yards
16	Neutral Zone, encroachment on.....	5 yards
17	Player out of bounds.....	5 yards
18	Illegal use of hands and arms by offense	15 yards
19	Interference with fair catch, etc.....	15 yards
20	Roughing kickers.....	15 yards
21	Substitute communicating before first play.....	15 yards
22	Unnecessary roughness.....	15 yards
23	Pushing, pulling, interlocked interference, etc.....	15 yards
24	Intentional throwing forward pass to ground.....	15 yards
25	Leaving field during one minute intermission.....	15 yards
26	Man going on field without permission	15 yards
27	More than one non-playing man going on field.....	15 yards
28	Coaching from sidelines.....	15 yards
29	Hurdling, tripping, piling up.....	15 yards
30	Unsportsmanlike conduct.....	15 yards
31	Clipping.....	25 yards
32	Man in motion on shift.....	15 yards
33	Delay in starting game or second half.	25 yards
34	Interference on forward by offense....	Loss of ball
35	Interference on forward by defense....	1st down at spot of foul
36	Slugging. . . Half distance to goal and disqualification	
37	Forward pass from less than 5 yards back.....	Loss of down
38	Penalty declined.....	

In all instances other than in the exceptions noted herein the rules of the National Intercollegiate Athletic Association are to be followed.

KICK-OFF AND FREE KICK

1. The receiving team may line in any position beyond the ten yard restraining line.
2. It is permissible for the kicking team to use a natural tee made from the soil in the immediate vicinity of the point of kick-off.

FLYING BLOCK AND TACKLE

The flying block and flying tackle are permitted.

FORWARD PASS

The passer may pass the ball from any point behind the line of scrimmage.

TIME OUT

Officials **must** notify the captain of each team when time has been out three (3) times—and no penalty is to be imposed for additional time out unless such notice has been given.

DEAD BALL

In Rule 7—Section 7—Article (1a) of the Intercollegiate rules **omit** the words “when any portion of his person except his hands or feet touches the ground.”

PERSONAL FOULS

Use of hands—in Rule 10—Section 2—Article 1—Item 2 of the Intercollegiate Rules, **omit** the words “players on defense may not strike the opponent on the head, neck, or face with the palms of their hands.”

CLIPPING

The penalty for clipping shall be 25 yards—officials shall enforce this rule to the letter.

GOAL POSTS

The goal posts shall be placed on the goal-line instead of ten yards beyond.

The Brooklyn Dodgers

The Dodgers have the biggest man in the league in Harold Ely of Iowa. Bugs weighs 275 pounds, and formerly played with the University of Iowa. Of all things, Ely is a bridge instructor—not constructor, please, Mr. Printer—during the off-season.

Milo Lubratovich, 235 pound tackle of Wisconsin, saves paper book match covers. The Dodger veteran of two years has his den at home entirely papered with these covers.

Stumpy Thomason, the Georgia Tech star that fumbled Roy Riegels into notoriety in the Rose Bowl game of 1929, is the only member of the original Brooklyn team of 1930 on the squad today. Stumpy is a great favorite with Brooklyn fans and will see plenty of action this season.

Dick Richards, Brooklyn blocking back, lost his pants in a football game during his college career at Kentucky. He forgot the name of the cigarette one is supposed to light on such occasions and smoked a pipe instead. Now he is never seen without his trusty pipe, which accounts for his air of nonchalance.

Paul (Swish) Riblett is one of the fastest ends in the league. Ben Douglass, halfback, is a great pass receiver, the result of his basketball activity at Grinnell College where he played the court sport for four years. . . . Nothing entrances Coach McEwan as much as watching a snake charmer in action . . . Shipwreck Kelly of the Dodgers was never shipwrecked, nor was he ever a flagpole sitter . . . How he received his nickname is still a mystery . . . Finicky Fishel of Syracuse is very particular about having his name spelled correctly. For instance, he hates to see it spelled F I C H E L, and that's only a slight error . . . Lubratovich and Leo Raskowski don't care how their names are spelled as long as they can cash their pay checks.

BROOKLYN DODGERS' SCHEDULE FOR 1933 AT HOME

October 15 — vs CINCINNATI REDS
October 29 — vs CHICAGO CARDINALS
November 5 — vs PITTSBURGH
November 26 — vs BOSTON REDSKINS
November 30 — vs NEW YORK GIANTS

NATIONAL PROFESSIONAL FOOTBALL LEAGUE

Last Sunday's Results

Boston, 21; New York, 20.
Chicago Bears, 10; Brooklyn, 0.
Green Bay, 17; Portsmouth, 0.
Chicago Cardinals, 3; Cincinnati, 0.

Standing of the Teams

	W.	L.	T.		W.	L.	T.
Chic. Bears.....	3	0	0	Green Bay.....	1	2	1
Portsmouth.....	3	1	0	Chic. Cards.....	1	2	0
New York.....	2	2	0	Brooklyn.....	0	1	0
Boston.....	2	1	1	Cincinnati.....	0	2	0
Pittsburgh.....	1	2	0	Philadelphia.....	0	0	0

Games Today

Sunday—Philadelphia at New York, Cincinnati at Brooklyn, Pittsburgh at Green Bay, Portsmouth at Boston, Chicago Cardinals at Chicago (Bears).



IT TAKES HEALTHY NERVES TO FLY THE MAIL AT NIGHT!

● A. M. WILKINS has flown the night air mail over 150,000 miles for TWA. It takes healthy nerves to hang up a record like that!



● WILKINS joins a fellow pilot, W. Niedernhofer, at Newark Airport, for a chat and a smoke. "Camels never ruffle or jangle my nerves," Wilkins says.

IT IS MORE FUN TO KNOW

Camels are made from finer, MORE EXPENSIVE tobaccos than any other popular brand. They are milder, richer in flavor. They never tire your taste or get on your nerves.



STEADY SMOKERS TURN TO CAMELS

A. M. WILKINS, air-mail ace, says: "It's a steady grind, all right, living up to our tradition that *the mail must go through!* That's why I smoke Camels. And I smoke plenty! Camels never ruffle or jangle my nerves, and I like their mild, rich flavor."

Camels never tire the taste—never get on the nerves. *Your* taste and *your* nerves will confirm this. Start smoking Camels today and prove it for yourself.

Camel's Costlier Tobaccos

Copyright, 1933,
R. J. Reynolds
Tobacco Company