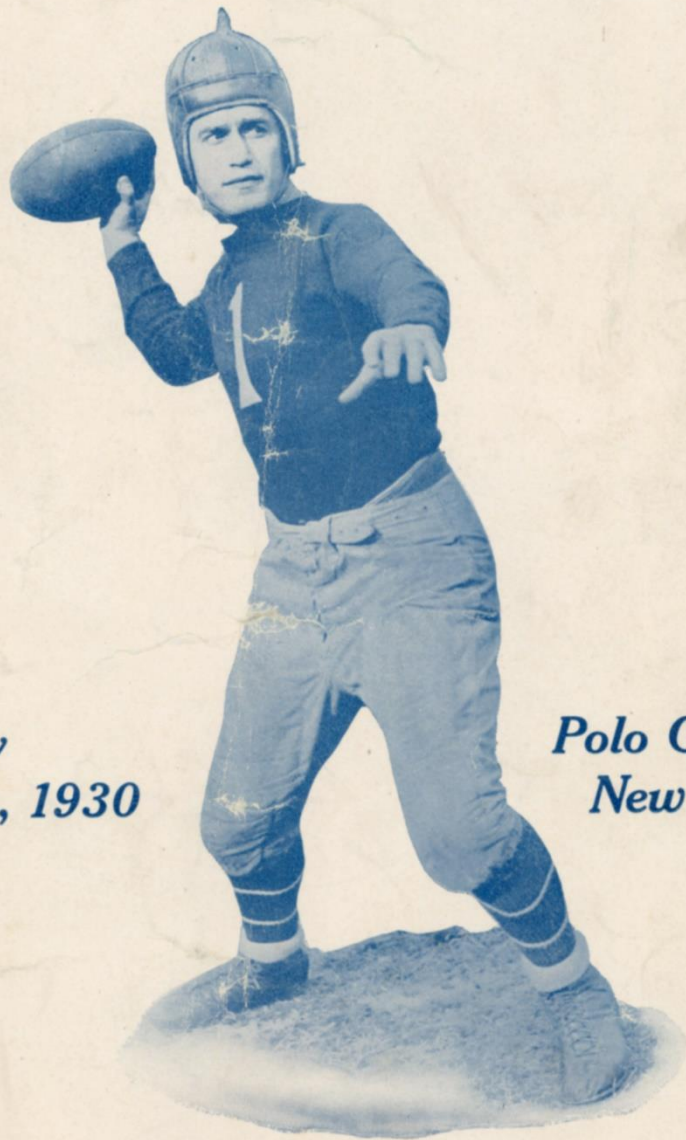


PRICE 15 CENTS

N. Y. FOOTBALL GIANTS
vs.
FAMOUS STAPLETON STARS



Sunday
December 21, 1930

Polo Grounds
New York

BENNY FRIEDMAN
N. Y. Giants' Captain

NEW YORK GIANT

PLAYERS

STEVE OWEN
Giants' Star Tackle



CHRIS. CAGLE



"TWINKLE" SEDBROOK

NEW YORK GIANT PLAYERS



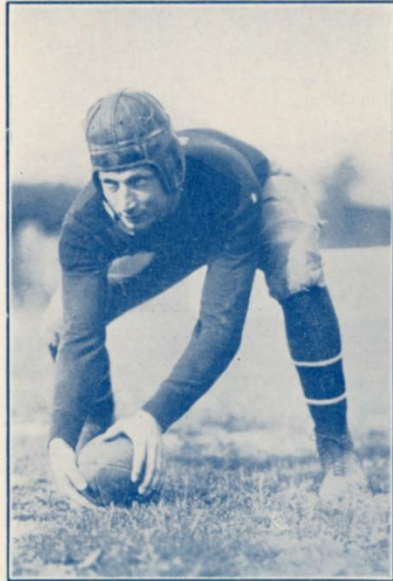
"GLENN" CAMPBELL



"LEN" GRANT



LES CAYWOOD



JOE WESTOUPAL

Line-Up and Numbers of Both Teams

NEW YORK GIANTS

No.	Player	Weight	Position	Player	No.
17	BADGRO.....	190	Left End	LUNDELL	1
55	OWEN (Steve)....	235	Left Tackle	BROWN	11
4	CAYWOOD.....	230	Left Guard	BUNYAN	17
7	WESTOUPAL.....	195	Center	RAPP	18
9	COMSTOCK.....	200	Right Guard	SATINSTEIN	12
3	GRANT.....	235	Right Tackle	WILLIAMS	14
15	CAMPBELL.....	190	Right End	STEIN	7
1	FRIEDMAN.....	183	Quarterback	FINN	5
12	CAGLE.....	175	Left Halfback	SNYDER	4
18	BURNETT.....	190	Right Halfback.....	STRONG	2
20	FEATHER.....	196	Fullback	WYKOFF	3

FAMOUS STAPLETON STARS

SUBSTITUTES

NEW YORK GIANTS

No.	Player	Weight	Position	No.	Player	Weight	Position
2	MURTAGH.....	190	Lineman	14	SEDBROOKE.....	175	Back
5	HOWARD.....	200	Lineman	16	WILSON.....	190	Back
6	MIELZINER.....	240	Lineman	22	MORAN.....	190	Back
0	HILPIRT.....	185		23	WIBERG.....	205	Back
11	GIBSON.....	200	Lineman	29	STAHLMAN.....	205	Lineman
13	HAGERTY.....	163	Back	36	OWEN, B.....	205	Lineman

FAMOUS STAPLETON STARS

No.	Player	Position	School
1	WILBUR LUNDELL.....	Right End.....	Minnesota U.
2	KEN STRONG.....	Right Halfback.....	N. Y. U.
3	DOUG WYCOFF.....	Fullback.....	Georgia Tech.
4	GERALD SNYDER.....	Halfback.....	Maryland
5	BERNIE FINN.....	Halfback.....	Holy Cross
6	BERYL FLOLLETTE.....	Left Halfback.....	N. Y. U.
7	SAM STEIN.....	Left End.....	U. of P.
10	BING MILLER.....	Right Tackle.....	N. Y. U.
11	FRED BROWN.....	Tackle.....	N. Y. U.
12	OLLIE SATENSTEIN.....	Guard.....	N. Y. U.
14	CY WILLIAMS.....	Left Tackle.....	Florida
16	HENRY KLOPPENBURG.....	End.....	Fordham
17	JOHN BUNYON.....	Guard.....	N. Y. U.
18	HERBERT RAPP.....	Center.....	St. Xavier
20	DAVE MYERS.....	Left Guard.....	N. Y. U.
22	WILLIE HALPIN.....	Right Guard.....	C. C. N. Y.

Summary of the More Important Penalties

The Number of the Penalty Will be Posted on the Irwin Scoreboard Whenever Possible

1 Offside, both sides.....	No penalty	21 Substitute communicating before first play.....	15 yards
2 Offside.....	5 yards	22 Unnecessary roughness.....	15 yards
3 Holding, etc., by defensive side.....	5 yards	23 Pushing, pulling, interlocked interference, etc.....	15 yards
4 Second or third incompleting forward pass during same series of downs.....	5 yards	24 Intentional throwing forward pass to ground.....	15 yards
5 Man in motion—no shift.....	5 yards	25 Leaving field during one minute intermission.....	15 yards
6 Crawling.....	5 yards	26 Man going on field without permission.....	15 yards
7 Taking out time more than three times during half.....	5 yards	27 More than one non-playing man going on field.....	15 yards
8 Running into kicker.....	5 yards	28 Coaching from sidelines.....	15 yards
9 Substitute failing to report.....	5 yards	29 Hurdling, tripping, piling up.....	15 yards
10 Unreasonable delay in putting ball in play.....	5 yards	30 Unsportsmanlike conduct.....	15 yards
11 Starting forward before ball.....	5 yards	31 Clipping from behind.....	25 yards
12 Fair catch, taking more than two steps.....	5 yards	32 Man in motion on shift.....	15 yards
13 Attempt to draw opponents offside.....	5 yards	33 Delay in starting game or second half..	25 yards
14 Interference with opponents before ball in play.....	5 yards	34 Interference on forward by offense..	Loss of ball
15 Illegal tackling.....	5 yards	35 Interference on forward by defense....	1st down at spot of foul
16 Neutral Zone, encroachment on.....	5 yards	36 Slugging. Half distance to goal and disqualification	
17 Player out of bounds.....	5 yards	37 Foul by defense on try for point....	Point awarded
18 Illegal use of hands and arms by offense	15 yards	38 Penalty declined.....	
19 Interference with fair catch, etc.....	15 yards		
20 Roughing kickers.....	15 yards		

New York Giants

	FIRST HALF		SECOND HALF	
	1st Quarter	2nd Quarter	3rd Quarter	4th Quarter
Touchdown	0	0	6	0
Goal	0	0	1	0
Goal (From Field)	0	0	0	0
Safety	0	0	0	0
Total	0	0	7	0

FINAL SCORE NEW YORK GIANTS..... 7.....

Famous Stapleton Stars

	FIRST HALF		SECOND HALF	
	1st Quarter	2nd Quarter	3rd Quarter	4th Quarter
Touchdown	0	6	6	0
Goal	0	1	0	0
Goal (From Field)	3	0	0	0
Safety	0	0	0	0
Total	3	7	6	0

FINAL SCORE FAMOUS STAPLETON STARS..... 16.....

SCORING

TOUCHDOWN.....	6	GOAL (From Field).....	3
GOAL (After Touchdown).....	1	SAFETY.....	2

Histories, New York Giants, 1930

BENNY FRIEDMAN—183—5.10

Former Michigan captain and All-American quarterback. In college also played baseball and basketball. Passes, kicks and runs with equal brilliancy. Rated as greatest star in or out of college. Third season in professional football.

"MULE" WILSON—188—5.11

Formerly Texas A. & M. Three years Southwestern halfback. In college was star in football and track. Third year as member of Giants eleven.

F. D. "HAPP" MORAN—187—6.1

Formerly Carnegie Tech. All-Valley honors for halfback. In college starred at football and basketball. Third year in professional football. Specializes running and kicking. Longest kick 68 yards.

JACK HAGERTY—163—5.10

Formerly Georgetown. Mentioned for All-American quarterback honors. In college played football and baseball. Unusual open field runner and pass catcher. Longest run 98 yards. Third year in professional football as member of N. Y. Giants.

E. E. FEATHER—190—6.1

Formerly Kansas State. All Missouri Valley honors for fullback. In college starred at football and baseball. Third year in professional football as running mate for Benny Friedman.

LEONARD SEDBROOK—173—5.10

Formerly of Phillips. Star end and in college also played baseball and basketball. First year in professional football.

SAUL MEILZINER—250—6.1

Notable linesman last year with Carnegie Tech. Also starred at baseball and basketball. First year in professional football.

JOE WESTOUPAL—200—6.3

Formerly of Nebraska. Star center with particular skill for playing roving style of game. Third year in professional football, previous teams being Kansas City and Detroit.

STEVE OWEN—228—6.2

Formerly Oklahoma State College. Former All-Western tackle and foremost intercollegiate wrestler. Fourth year with N. Y. Giants. Brother of Bill Owen, the Giants' right tackle.

LESTER GAYWOOD—235—6.1

Formerly St. Johns. Star guard. Fourth season in professional football. Previous teams, Buffalo and Detroit.

BOB HOWARD—200—6.0

Formerly Marietta College. Outstanding guard. Fourth year in professional football. Kansas City, Cleveland, Detroit previous teams.

BILL OWEN—200—6.0

Oklahoma A. & M. All-Western tackle in 1925. Fourth year in professional football. Previous teams: Kansas City, Cleveland and Detroit.

GLENN CAMPBELL—184—5.11

Kansas State. All Conference end in 1925. Played basketball three years. First year in professional football.

LEONARD GRANT—235—6.2

1929 New York University captain and ranked one of the leading tackles in college football.

MORRIS BADGRO—190—6.0

Last season's star end at Southern California. Rated second only to Brick Muller as greatest end the Pacific Coast ever developed. Badgro won his letter in football, baseball and basketball.

SWEDE WIBERG—203—6.0

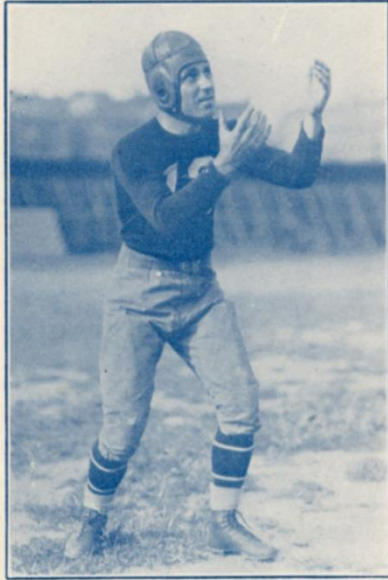
Three years in professional football. Formerly starred with University of Kansas.

RUDY COMSTOCK—200—6.0

Star guard with Frankford Yellow Jackets three years.

LE ROY ANDREWS—Coach.

NEW YORK GIANT PLAYERS



JACK HAGERTY
Quarterback



"RUDY" COMSTOCK



"TINY" FEATHER
Fullback



"BILL" OWEN



PLEASURE

is always
on your side
when you smoke

Camels



© 1930, R. J. Reynolds Tobacco Company, Winston-Salem, N. C.

M. B. Brown Printing & Binding Co.
37-41 Chambers St., N. Y.

