

Price 10 cents

**BROOKLYN DODGERS**  
• VS •  
**STAPLETON BUFFALOES**



**RALPH KERCHEVAL—HALFBACK**

KENTUCKY

*Football's Greatest Kicker*

**EBBETS FIELD**

**Wednesday, November 11, 1936**



**Two  
Winners**

for long—  
lasting sparkle  
in your long  
tall drinks

**CANADA  
DRY**

*The Champagne of Ginger Ales*

Next Home Games

**Brooklyn Dodgers**  
vs.  
**Green Bay Packers**

at  
EBBETS FIELD  
SUNDAY, NOV. 15, 8.30 P. M.

with  
CLARK HINKLE  
GEORGE SAUER  
ARNOLD HEBER

**Brooklyn Dodgers**

vs.  
**New York Giants**

at  
EBBETS FIELD  
Thanksgiving Day, Nov. 26, 2.15 P. M.

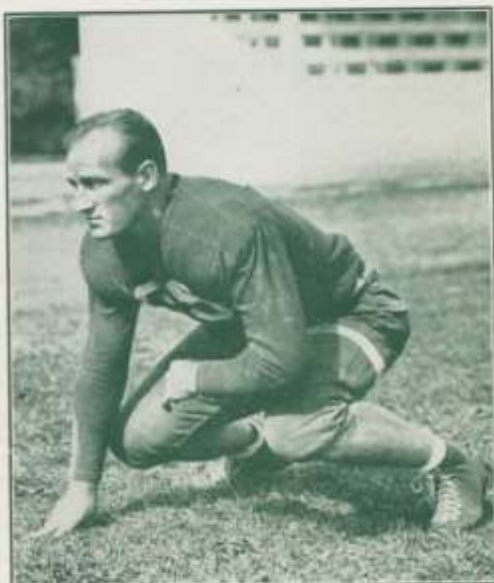
with  
TUFFY LEEMANS  
KINK RICHARDS  
ED. DANOWSKI

MacKey's Ticket Service, 234 W. 44th Street,  
N. Y. C.; Crescent Club, Brooklyn, N. Y.;  
"21" Club, 21 W. 52d Street, N. Y. C. Secure  
desirable seats in advance at Brooklyn Dodgers  
Office, Eagle Building, Brooklyn, N. Y.

# IN TODAY'S LINEUP



HENRY "RED" KRAUSE  
Center  
Brooklyn Dodgers



JUSTIN RUKAS  
Guard  
Brooklyn Dodgers



FRANK STOJACK  
Guard  
Brooklyn Dodgers



PHIL SARBOE  
Half Back  
Brooklyn Dodgers

Kickoff 2:30

THE STARTING

(Subject to change)



STAPLETON BUFFALOES ROSTER

No.	NAME	POSITION	WEIGHT	COLLEGE
0	Floyd	E.	185	Kansas
1	Twitchell	C.	180	Rutgers
3	Smelston	B.	185	N. Y. U.
13	Kane	E.	205	St. Mary's
19	Switzer	Q.B.	170	Cornell
25	Sansen	F.B.	205	Iowa
30	Cronin, G.	B.	190	Rutgers
33	Werner, R.	B.	190	Muhlenburg
38	Sherman	T.	201	Kansas
40	Werner, M.	G.	190	Muhlenburg
50	Ford	T.	210	Kansas
55	Cronin, J.	E.	195	Rutgers
60	Grant	T.	210	N. Y. U.
66	Morse	G.	215	Hartford
77	Prisco	B.	190	Rutgers
80	Morrison	C.	180	Hartford



STAPLETON

R. WERNER  
33 61  
Right Half

J. CRONIN FORD  
55 52 50 15  
Right End Right Tackle  
WEINER MORSE 66 61  
Right Guard

RIBLETT HELDT STOJACK JORGENSEN  
11 14 19 18  
Left End Left Tackle Left Guard Center

MANIACI  
34  
Left Half

SANSI  
23  
Fullback

SWITZER  
19  
Quarterback

MORRISON  
80  
Center

LUMPHAM  
27  
Quarterback

CRAY  
14  
Fullback

BROOKLYN



"Express your glee," the wolf growls, "squelch it!  
I'm big and bad—and, boy, I feel it!"



CLEAR HEADS  
CALL FOR

© 1936 CALVERT-MARYLAND DISTILLING CO., INC.  
BLENDED WHISKEY—50 PROOF—straight whiskey  
old; 72% grain neutral spirits. CALVERT'S "SPECIAL"  
in this product one year and 3 months or more old; 1  
5% straight whiskey 1 year and 3 months old; 5% strai

**S. STAPLETON BUFFALOES**

2:00 P.M.

**LINEUPS**

(by coaches)

**BUFFALOES**

SEN

back

SMELTON

Left Half

TZER

9

ter

RISON

0

mer

GRANT

SHERMAN

KANE

60 66

38 22

13

Left Guard

Left Tackle

Left End

SEN

8

ter

KIRKLAND

LEE

FUQUA

20

21

23

Right Guard

Right Tackle

Right End

PKIN

7

ter

KERCHEVAL

26

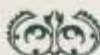
Right Half

YNE

6

back

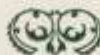
**DODGERS**



**BROOKLYN DODGERS ROSTER**

No.	NAME	Pos.	HGT.	WGT.	COLLEGE
10	Wilson, Bobby...	H.B.	5:9	147	So. Methodist
11	Riblett, Paul....	E.	5:11	185	Penn. U.
12	Yeserski, John...	T.	6:4	240	St. Mary's
14	Heldt, Carl.....	T.	6:2	205	Purdue
15	Crayne, Dick....	F.B.	6:0	200	Iowa
17	Hartman, James..	E.	6:2	210	Colorado
18	Jorgensen, Wagner	C.	6:3	225	St. Mary's
19	Stojack, Frank...	G.	5:11	195	Washington State
20	Kirkland, B'Ho...	G.	6:0	215	Alabama
21	Lee, Bill.....	T.	6:2	240	Alabama
22	Cook, Dave.....	F.B.	6:0	210	Illinois
23	Fuqua, Ray.....	E.	6:0	190	So. Methodist
24	Krause, Henry...	C.	6:4	205	St. Louis U.
25	Sarboe, Phil.....		5:10	168	Washington State
26	Kercheval, Ralph	H.B.	6:1	190	Kentucky
27	Lumpkin, Roy...	Q.B.	6:3	205	Georgia Tech.
28	Boyer, Verdi....	G.	5:10	195	U. C. L. A.
29	Kaska, Tony.....	F.B.	6:0	200	Illinois Wesleyan
30	Whatley, James..	E.	6:6	215	Alabama
32	Badgro, Morris...	E.	6:1	190	So. Calif.
33	Barrett, Jeff....	E.	6:2	185	L. S. U.
34	Maniaci, Joe....	H.B.	6:2	210	Fordham
35	Rukas, Justin...	G.	6:0	205	L. S. U.

Paul J. Schissler, Coach  
Bill Culberth, Trainer



**Calvert**

**WHISKIES**

The pig says, "Why get in a hog?  
Get CALVERT, and—don't be a hog!"



EXECUTIVE OFFICES: N. Y. C. CALVERT'S "RESERVE"  
is in this product is 3 years old, 25% straight whiskey 5 years  
old, 75% BLENDED WHISKEY—no PROOF—straight whiskey  
4, 25% straight whiskey 75% grain neutral spirits; contents  
straight whiskey 2 years old; 15% straight whiskey 5 years old.

# The National Football League

## RULES OF MAJOR LEAGUE FOOTBALL SUMMARIZED BY WILFRID SMITH

Professional football, in the past three seasons, has altered the code of rules under which colleges and universities play the game. The changes have not been numerous but they have been important.

The most important change permits forward passes to be thrown from any point behind the scrimmage line. The college rule permits forward passes from any point FIVE yards behind the scrimmage line.

In professional football the goal posts are on the goal lines.

Professional football declined to adopt the "dead ball" rule of the collegiate code.

Flying blocks and flying tackles are permitted in the professional game. The professional rule against clipping, that is, knocking down an opponent from the rear, is strictly enforced. The penalty is loss of 25 yards, as compared with the collegiate rule which penalizes infractions with the loss of 15 yards.

Professional players may be stationed any place on the field so long as they do not advance within 10 yards of the ball before it is kicked.

At the kickoff, the pros may kick from a dirt tee.

Substitute players may communicate with their teammates immediately on entering the game. Coaches must be notified when the limit of three times out have been taken in a half.

When the ball carrier is run out of bounds or is tackled at any point within 15 yards of the side line, the ball will be placed in play at a corresponding point 15 yards from the side of the field.

Offside penalties on the defense within its own 10 yard line have been minimized. Instead of loss of five yards, customary rule, the penalty in this area now is half the distance to the goal.

### Here are the two most important changes in the pro rules for this fall:

1. A fumbled ball, except fumbles resulting from lateral passes, may be advanced by either team, no matter whether the ball strikes the ground or not. On fumbled laterals, the rule remains the same. The offense may recover and advance; the defense only may recover unless the ball is caught in the air. Then it may be advanced. Fumbled kicks may be recovered by the kicking team. They cannot be advanced unless the receiver of the kick gains possession and then fumbles when tackled.

2. The penalty for two forward passes on the same down has been changed. In the past there have been several instances where a forward pass was completed successfully and after the ball had been advanced for a long gain, an attempted lateral pass actually became a second forward pass. Under the collegiate rule the ball is brought back to the point at which it originally was put into play. The new professional rule provides for a loss of FIVE yards from the point at the second and illegal forward pass.

A second incomplete forward pass in the end zone constitutes a touchback and loss of the ball to opponents on their 20 yard line. This is the rule in the collegiate code. It also is the professional rule unless the second incomplete pass into the end zone is thrown when the ball was put into play from a point back of the opponents' 20 yard line. In this case the ball passes over to the opponents at that point rather than the 20 yard line.

**Insure Yourself « «**  
**Insure Your Business**

With

**JOHN S. "Shipwreck" KELLY**

All Forms of INSURANCE

LIFE

CASUALTY

BONDING

MARINE

FIRE

AIRCRAFT

Associated with

**BROWN, CROSBY & CO., Inc.**

96 WALL STREET

Tel. JOhns 4-1800

NEW YORK

**BROOKLYN PROFESSIONAL LEAGUE**  
**SCHEDULE—1936**

HOME

Nov. 15—Green Bay

Nov. 26—New York

ABROAD

Nov. 22—Boston

Nov. 29—Philadelphia

Dec. 6—Detroit

Music by

**HARRY ARNOLD and His Orchestra**



**BETWEEN  
MEALS**



**AND AT  
MEALS**



SMOKE  
**Camels**

FOR  
DIGESTION'S  
SAKE!

**COSTLIER TOBACCOS!**

Copyright, 1936, R. J. Reynolds Tobacco Company

Camels are made from finer, MORE EXPENSIVE TOBACCOS  
... Turkish and Domestic ... than any other popular brand.  
(Signed) R. J. REYNOLDS TOBACCO COMPANY, Winston-Salem, N. C.

