

Yellow Jackets

OFFICIAL PROGRAM

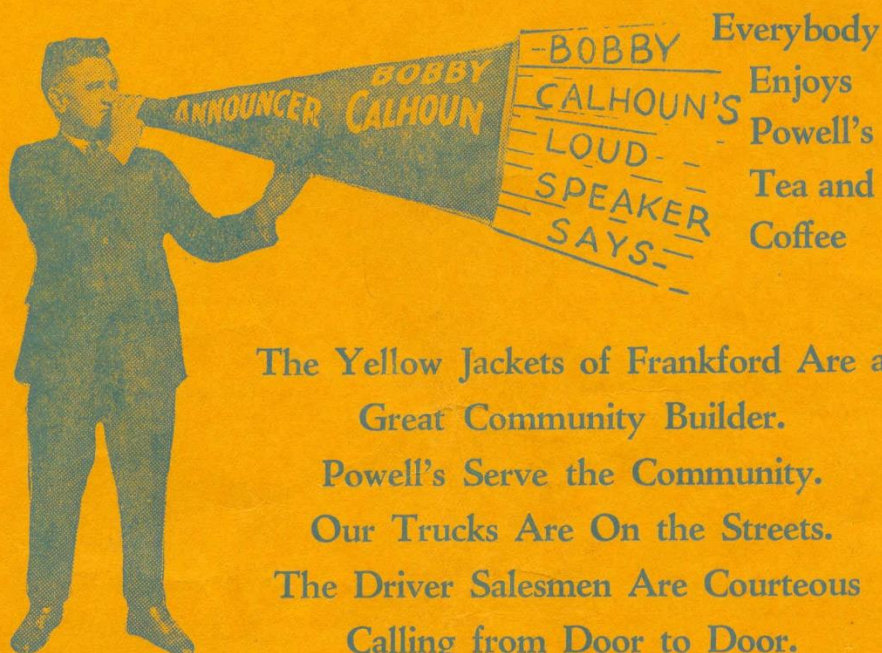


PRICE
TEN
CENTS

PUBLISHED WEEKLY BY THE
FRANKFORD ATHLETIC ASSOCIATION

Member of National Professional Football League

The Official Announcer
Frankford Athletic Association



The Yellow Jackets of Frankford Are a
Great Community Builder.
Powell's Serve the Community.
Our Trucks Are On the Streets.
The Driver Salesmen Are Courteous
Calling from Door to Door.

Powell's Merchandise Service Cannot Be Surpassed

HAIL A TRUCK—PHONE—WRITE

Powell's Tea & Coffee Company

1822-24 EAST WILLARD STREET

PHILADELPHIA, PA.

We Cover the Great Northeast like a Blanket

Frankford A. A. Official Program

VOL. VI

SATURDAY, NOVEMBER 3, 1928

No. 6

PUBLISHED BY AND IN THE INTEREST OF FRANKFORD ATHLETIC ASSOCIATION

PROGRAM COMMITTEE

EDWARD B. FRANCE

HERBERT S. ROYLE, *Chairman*

WILLIAM L. M. HEYS

OFFICERS AND DIRECTORS

HERBERT S. ROYLE, *President*

ROBERT O'NEILL, *Recording Secretary*

WILLIAM L. M. HEYS, *Vice-President*

LEWIS F. CASTOR, JR., *Financial Secretary*

ROBERT B. HAINES, *Treasurer*

JAMES ADAMS
THOMAS ASHBY
FRANK T. WILSON

FRANK HOLLINGSWORTH
WILLIAM TERRY
WILLIAM DODDS
HERBERT SINN

WILLIAM BLACKBURN
JOSEPH A. CARROLL
A. R. PRESTON

COMMITTEES

Solicitor

James L. Adams

Club Manager

Robert B. Haines

Coach

Edward Weir

Club Physician

Dr. Carl F. Koenig

Statistician

Joseph E. Evans

Program Committee

Herbert S. Royle, *Ch'n.*
William L. M. Heys
Edward B. France

Ground Committee

Lewis F. Castor, Jr., *Ch'n.*
Francis G. Gwynn
William Whittle
William A. France
Fred Lotz

Refreshment Stand Committee

A. R. Preston, *Ch'n.*
William Terry

Membership Committee

William L. M. Heys, *Ch'n.*
Thomas Ashby
Jules Foster
Harry Terry

Advisory Committee

Frank T. Wilson, *Ch'n.*
James L. Adams

Entertainment Committee

Joseph A. Carroll, *Ch'n.*
Walter Lightfoot
Belmont Pattison
Thomas Holden
William Terry
Francis G. Gwynn
William Whittle

Ticket Committee

Lewis F. Castor, Jr., *Ch'n.*
A. R. Preston

Publicity Committee

W. D. Blackburn, *Ch'n.*
Robert Calhoun
William Dallas
Samuel J. Murphy
Edward B. France

Finance Committee

Herbert Sinn, *Ch'n.*
Frank W. Hollingsworth
Clifford K. Fowler

Automobile Committee

Robert O'Neill, Jr., *Ch'n.*
Frank Gilbert
John Latimer

Usher Committee

Robert B. Haines, *Ch'n.*
Thomas Ashby
Arnold Dodds

Reception Committee

W. D. Blackburn, *Ch'n.*
Fred Baun
J. Harry Schumacker
Francis P. Moitz
Fred W. Cassidy, Jr.

Schedule Committee

Robert B. Haines, *Ch'n.*
Frank W. Hollingsworth

Equipment Committee

Lewis F. Castor, Jr., *Ch'n.*

DOM FRASETTO, *Official Announcer*

BOULEVARD POOL AND BEACH CLUB

ROOSEVELT BOULEVARD AND TYSON STREET

SWIM — DINE — DANCE

4 POOLS

BALCONY RESTAURANT

SPACIOUS BALL ROOM

AMPLE PARKING SPACE

Open from May to September

Kinkerter & Sheppard Co.

Hardware

TOOLS AND CUTLERY

CHINA AND GLASSWARE

BRIGHT CORNER

LINOLEUMS

HOUSEFURNISHINGS

STOVES

FRANKFORD

Margaret Station on the "L"

SMEDLEY BROS. CO.

Lumber and Millwork

FRANKFORD

BRIDESBURG

THE NORTHEAST PHILADELPHIA CHAMBER OF COMMERCE

For

THE YELLOW JACKETS

And

THE WHOLE NORTHEAST

The SIX of the Century

and

The Century EIGHT

HUPMOBILE

are STILL two years ahead
\$1530 to \$2350 delivered equipped

FILLMORE MOTOR CO.

4827 FRANKFORD AVE.

JEF. 7763

THE NINTH BANK AND TRUST COMPANY

FRONT STREET
AT NORRIS

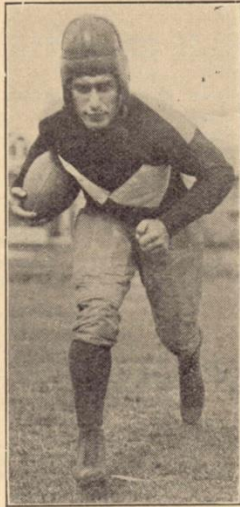


ALLEGHENY AVENUE
AT KENSINGTON

PHILADELPHIA
THE BANK OF SERVICE

Benny Friedman and His League Leading Detroit Aggregation Opposes Frankford

Win for Yellow Jackets Today Will Give Ed Weir and Mates First Place



"BENNY" FRIEDMAN

First place.

Yes, that is exactly what is at stake today as the Jackets and Wolverines take the field.

Benny Friedman and his players have been in three combats, one with the Yankees, another with the Giants and another with the Bears and won them all.

The Jackets have defeated Dayton twice, Providence, Green Bay, and lost to the Yankees.

Provided Frankford can win today it means that our boys will ride into New York at the head of the league and that is the hope of every fan.

Of Friedman the fans all know. They are acquainted with the fact that Detroit's position in the race is due largely to the individual accomplishments of the former Michigan All-American, but at the same time the fact must not be overlooked that Friedman has a real supporting cast.

Some of Benny's backfield mates are well known. E. E. Feather who plays fullback, Rex Thomas a halfback and Oscar Wiberg were with Benny when he played at Cleveland last year. Leonard Sedbrook and P. Jackson are playing their first year with Friedman.

Feather is usually the receiver for Benny's passes. He is 6 foot and weighs 190 pounds and is a great defensive star, especially excelling in providing interference. Oscar Wiberg weighs 210 pounds and hails from Nebraska Wesleyan College where he starred in 1923, 1924, 1925 and 1926. Last year with Cleveland he was a kicker, passer, pass receiver and punter and one of the mainstays of the Friedman attack. Rex Thomas last year had more runs to his credit than any other player in the National League. In a game Cleveland vs. Duluth he returned a kickoff 88 yards.

(Continued on page 29)

ABBOTT & COBB SEEDS

Growers and Importers

Everything for Farm and Garden

4903 FRANKFORD AVENUE

FRANKFORD

STRONG

RELIABLE

SOUND

FRANKFORD TRUST COMPANY

FRANKFORD AVENUE AND UNITY STREET

Capital and Surplus, \$1,000,000.00 Resources Over \$12,000,000.00

The Place for Your Savings

And All Trust Matters

Titles Insured

Boxes to Rent in Burglar-Proof Vault from
\$3.00 per Year Upwards

Open Banking Hours Every Day and on
FRIDAY EVENINGS, 6 to 9 o'clock

FRANKFORD SALES CO.

Distributors

STUDEBAKER and ERSKINE

4821 FRANKFORD AVENUE

PHILADELPHIA

The World's Champion Car

Established 1909

Cable Address "Bertolet"

Laurel
Brand

SOAPS — OILS

for the textile trade

Made in the Great Northeast for "Northeasters"

LAUREL SOAP MANUFACTURING CO., INC.

WM. H. BERTOLET & SONS

TIOGA, THOMPSON AND ALMOND STS.

PHILADELPHIA, PA.

GIBSON WALKER COMPANY

INCORPORATED

LUMBER

LUZERNE and F STREETS

PHILADELPHIA

Ex-Frankford Players with Millville No Match for Ed Weir's 1928 Combination

*Swede Youngstrum, Tex Hamer and Others
Completely Routed in 26-0 Win*

"The old gray mare, she ain't what she used to be," might be applied to the nine ex-Frankford players now with the Millville Club which took an artistic 26 to 0 trimming from the Jackets last Saturday. Welcoming the oldtimers with a kick in the slats, as it were.

The ex-Jackets were shadows of their former selves when Frankford "went up in the air" to score in nearly every quarter.

At the commencement of the home-coming battle the Millville crowd actually outplayed the Weir men. They were fresh, bubbling with confidence and fully determined to prove the Frankford officials bad guessers in leaving them go.

But early in the second quarter Tex Hamer, provided a break for the home team by fumbling a punt deep in his own territory.

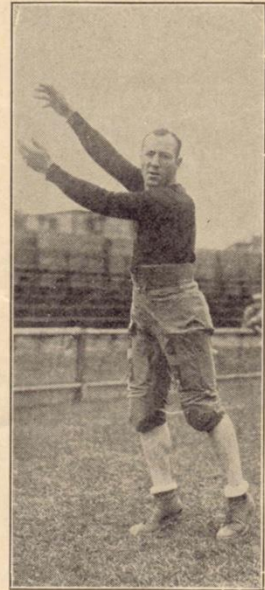
That was the turning point. Frankford switched to the passing game in earnest for the first time this year and revealed remarkable power in using the ether for the transportation of the leather lemon from heaver to receiver.

Charley Rogers, a full distance performer for the first time this fall, proved as adept in this overhead attack as in tearing off long gains off tackle and around the wings.

Rogers scored two touchdowns after taking passes from Ken Mercer, making short dashes to the goal line in each instance.

The aerial attack was instrumental in all the scoring.

Wally Diehl plunged across for one of the touchdowns after forwards thrown by Mercer and Stockton had put the pigskin in close proximity to the last chalk mark.



MERCER

(Continued on page 13)

COMPLIMENTS

Dr. Wm. L. Battersby
DENTIST

REAL BRICK

Since

1807

H. M. & C. B. SINER

Frankford, Philadelphia

VICI kid

REG. U.S. PAT. OFF.

is produced only by

ROBERT H. FOERDERER, INC.

FRANKFORD, PHILADELPHIA

Selling agencies in all parts of the world

BECKER'S BREAD

for particular people

Since 1852

J. BENTON McCANDLESS
5444 Oakland Street

ELMER G. MILLER
519 E. Hilton Street

McCANDLESS & MILLER

Domestic Coal for the Home

COAL
OF QUALITY

Steam Coal for the Industries

IMMEDIATE SERVICE THROUGHOUT THE GREATER NORTHEAST

Regent 9563-9564

ALBERT and SEPVIVA STREETS

East 8950

FRANCE-BUILT HOMES FRANKFORD STANDARD OR OVER FORTY YEARS

There Is an Operation Now
AT HORROCKS STREET
Above Bridge Street

W. M. France Sons, Inc.

"Say it with Flowers"



Flowers have a way of expressing those tender thoughts that we ourselves cannot say or write. Whatever the occasion may be flowers are always appreciated. We can telegraph them anywhere. FLOWERS FOR ALL OCCASIONS

Hill's Flower Shop

4465 FRANKFORD AVENUE
Bell Phone, Jefferson 4477 Keystone Phone

Wilbur Henry's Pottsville Maroons with Old Favorites Back Here Next Saturday

Upstaters Are Sure to Come to Frankford in Best Condition to Upset Jackets

No matter how Pottsville stands in the National League race, one thing is certain, the Maroons will play their hardest when they hit Frankford.

And they are here next Saturday and then the Jackets make the return trip upstate the following day.

The Maroons are down near the bottom right now with one win and two defeats and will hardly win their game tomorrow when they journey to Green Bay to play the Packers, but that will not stop them coming here all pepped up to upset Frankford.

The visitors have former Frankford players in their line-up and old favorites. There is Johnny Budd, Herb Stein, Joe Carp and Hap Moran, who is playing at one of the halfback posts.

Pottsville is being coached this year by Wilbur Henry, better known as Pete, the



"PETE" HENRY

all-time All-American tackle from Washington and Jefferson. Henry, who weighs more than 235 pounds, is still able to play a pretty fair game, although he rarely starts nowadays. Henry was cited on Walter Camp's All-American elevens of 1915 and 1916. After leaving Washington and Jefferson College he started on his professional football career. He was a member of the famous Canton Bulldogs, which won the championship in 1924.

Joe Carp, playing tackle for the Maroons, is a former Jacket. He was chosen Illinois all-state tackle for three years and is a wild man in football.

Johnny Budd was an All-American guard picked by Walter Camp in his first All-American service team. He played at Lafayette in 1921,

(Continued on page 29)

Schlater's



THE
BEST

THE
BEST

BREAD

KENSINGTON TRUST COMPANY

KENSINGTON AND ALLEGHENY AVENUES

Broad Street Office

BROAD STREET AND ALLEGHENY AVENUE

This Bank, upon completion of its new building at Kensington and Allegheny Avenues, and with its RESOURCES OF OVER \$16,000,000, offers to the business men and individuals of our great section every facility for the handling of their business.

Your Business is Earnestly Solicited

OUR SAVINGS FUND
Four Per Cent. Interest Paid

Open until 3 P. M. daily, and Monday and Friday Evenings until 9 o'clock.

CHARLES L. MARTIN

President

Vice Presidents

JAMES HENRY
WM. H. BREHM

Sec'y and Treas.

H. P. MAUGER

WM. HENDERSON & CO.

FRANKFORD, PHILADELPHIA

7,000 Fans at Clifton Heights Watch Jackets Romp Off with Easy 20-6 Win

*Backfield Players and Tony Kostos Have Big Day
on Delaware County Grid*

Following the easy triumph over Millville last Saturday, Ed Weir and his partners in the race for the National League Football gonfalon motored out to Clifton Heights, on Sunday, to take Jimmy Gallagher's proteges into camp by the score of 20 to 6.

The day was ideal and the throng according to Jimmy Gallagher was the largest that ever attended a game in the Delaware County town and the contest was the finest ever witnessed there. Gallagher is hoping that manager Bob Haines will see fit to return there for another game perhaps sometime early in December.

"Lot of difference playing a team in charge of the club management rather than a lot of barnstorming players," said Gallagher to assembled newspaper men after the game. "I believe this contest has done more to boost football at Clifton than any single game ever played here in the years the club has been in existence. Feature writers of the Philadelphia dailies, who also were in attendance, were loud in their praise of the 1928 Jacket combination.

Frankford scored in the first three periods. Johnny Roepke registering early in the initial quarter, Houston Stockton getting another six pointer in the second period while the final Frankford tally was made by Roepke in the third period.

Stockton tossed aials with apparent reckless abandon but invariably Fait Elkins or Tony Kostos were on the receiving end and most of the passes were completed. Elkins played the entire game at quarterback and impressed by the manner in which he ran the team.

The crowd was loud in its demand to send Rogers in and Bob Haines obliged when the Camden Comet played the last five minutes and made some long gains. Just before Rogers entered the fray Clifton scored when Andy Mulloy received a long pass from Ned Wilcox and raced to the goal line for a touchdown. Ned Wilcox and Dock Moynihan, former Frankford players looked good, but Pete Richards another ex-Jacket was not so impressive.



STOCKTON

GEORGE ROYLE & COMPANY

FRANKFORD, PHILADELPHIA

RESERVE POWER

You know the importance of reserve power—the power you don't use often, but keep for the unexpected emergency.

Money in this bank is your financial reserve power when you need it.

Capital	\$500,000.00
Surplus and Undivided Profits.....	1,650,000.00
Total Resources	14,500,000.00

Let our Trust Officer explain how we can serve as your executor.
You can discuss this matter without obligation.

SECOND NATIONAL BANK OF PHILADELPHIA AT FRANKFORD

Safe Deposit Boxes for Rent—\$3, \$5, \$7, \$10, \$15, \$25

ACTS AS EXECUTOR AND TRUSTEE

INTEREST PAID ON CHECKING AND SAVING ACCOUNTS. EQUIPPED FOR PERSONAL SERVICE

OPEN FRIDAY EVENINGS



FRANKLIN PRINTING COMPANY

514 LUDLOW STREET PHILADELPHIA, PA

THE INDUSTRIAL TRUST TITLE and SAVINGS CO.

Established 1889

1944-52 N. FRONT STREET

For nearly 40 years we have successfully served the community

Capital	\$ 500,000.00
Surplus and Profit.....	2,180,000.00
Total Resources	14,400,000.00
Trust Funds	9,400,000.00

Just What We Expected; Giants in Good Shape for Contest with Yellow Jackets

Proteges of Earl Pottieger Come Around in Time for Battle with Hornets

Little over a week ago a story was wafted over the wires by the Associated Press to the effect that the camp of the New York Giants rivaled that of any hospital—for cripples.

My but they were in bad shape, in fact it was hardly conceivable how they would play the Yankee game only a few days off. Well, they played C. C. Pyle and his troupe and won.

This is another week and now we read in the Gotham dailies such headlines as this: "Giants in Good Shape for Game with Yellow Jackets." They all suddenly seem to bound into condition when they face the Yellow Jackets.

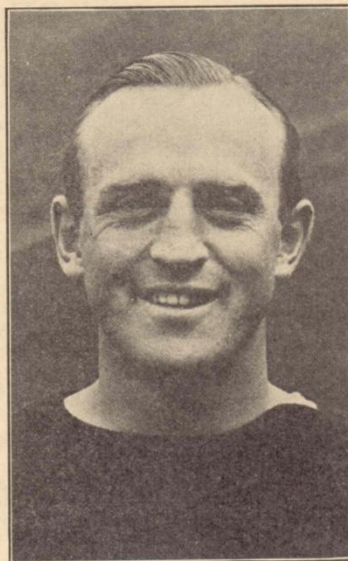
And these Giants are out to win, make no mistake about that, for they also have broadcasted that statement to their fans. They want to settle an old grudge as Frankford won in both 1925 and 1926.

The game, by the way, is the opening contest at home for Coach Earl Pottieger and his cohorts. It is the first time this season that the Jackets will be pitted against Bruce Caldwell, former Yale star. Mr. Caldwell has been doing very well according to reports.

The Giants are going along very nicely right now if you please. There has been a few changes in the team but most of the 1927 champions are back. Wilson, Hinkey Haines, Hagerly and McBride are all backfield players who returned, of course, with the addition of Caldwell.

Hubbard, Jappe, Milstead, Murtagh and Captain Owen are linemen who are in action again, while half a dozen newcomers occupy the other berths.

The signing of Caldwell gave the Giants a player who has proven a big drawing card at the gate. Reports of the



"HINKIE" HAINES

(Continued on page 29)

RUSH BROTHERS Contractors and Builders

DARRAH AND MARGARET STREETS

Jobbing Promptly Attended to

Estimates Given

Bell Phone, JEFFerson 5766

PLAY TO WIN—

SAVE TO WIN

The Team Saves Its Strength for a Clear Field to the Goal
Save *YOUR* Resources for a Clear Field to *SUCCESS*

Open a Savings Account—One Dollar will do it and
ADD TO IT REGULARLY

4% Interest

The Western Saving Fund Society
OF PHILADELPHIA

MAIN OFFICE: TENTH AND WALNUT STREETS

Front and York Sts. 4643-45 Frankford Ave. Germantown Ave. and Venango St.

ESTABLISHED 1898

Robert Lawson
MEN'S CLOTHES

Haberdashery Hats

FRANKFORD AVE. AND PAUL STREET
PHILADELPHIA

A WINNER

YOU CAN MAKE YOUR GOAL
WITH A SAVINGS ACCOUNT

HOLMESBURG TRUST COMPANY

Two Convenient Offices

8033-35 FRANKFORD AVENUE

7316 FRANKFORD AVENUE

HOLMESBURG, PHILADELPHIA

PLAYING THE GAME

Player-Coaches—Jackets' New End. Frankford's Week-End Struggles

By ED POLLOCK

There is one distinct advantage in being a player-coach, particularly when in quest of new material. The recent experience of Ed Weir, Frankford's popular mentor, illustrates the point.

Several days ago the Yellow Jackets played the Stapleton eleven on Long Island. Weir stationed himself at tackle.

Opposing him on the wing of the Stapleton team was Carl Waite. Weir had never heard of him and doubtless there are few in this community who have.

As Weir started to get across to the Stapleton backfield a few tons of humanity hit him on the thighs. At least it felt like a few tons.

Weir took a better look at the Stapleton end. Any one who can charge like that usually is well enough known to be recognized by the Frankford coach. He thought perhaps he was playing under an assumed name. There wasn't a feature that was familiar.

On the next play Weir tried again and was more careful to use his hands as he attempted to knife through. Again this terrible charge. The Frankford coach realized he was against a real football player.

Weir watched his adversary both on defense and offense. He saw he was doing the right thing and always at the right time. Furthermore, he was doing it a great deal better than most ends.

"He's the best football player I've played against all season," Weir said after the game. "Imagine an end weighing 205 pounds who is only 5 feet 9 inches tall, fast, shifty, smart and a good receiver."

The next time Weir met Waite it was strictly a business proposition. The Stapleton end is now a member of the Frankford Yellow Jackets.

EX-FRANKFORD PLAYERS WITH MILLVILLE

(Continued from page 5)

For complete deception the other six pointer registered by Tony Kostos takes the cake. It was a "pip."

Four yards away from the goal line, Frankford resumed its ground work. Diehl plunged once, twice, three times. And still Frankford was away.

On the fourth down, one yard to go, Kostos secreted himself over near the boundary line and took Mercer's forward in no man's land. There wasn't a soul near him. All he had to do was step across the line for the score.

Frankford's effectiveness in the air can be judged by fifteen complete aerials in twenty-five tries, only two being intercepted.

JOS. E. EVANS

Battery Specialist

1628 SELLERS STREET, FRANKFORD

Phone JEF. 7844

Peppy Batteries

Snappy Service

STETSON
HATS

SCHOBLE
HATS

ZANZINGER HATS

2929 and 4727 FRANKFORD AVE.

"LOOK AT YOUR HAT—

EVERYONE ELSE DOES!"



\$25

14-K. white or green gold ring, set with a brilliant pure white diamond. \$25 will not buy more value.

HOW TO BUY A DIAMOND

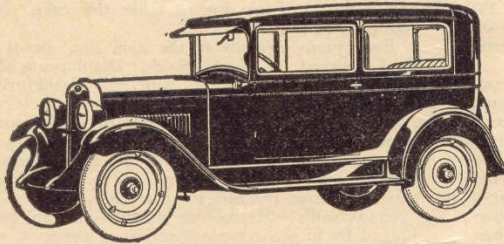
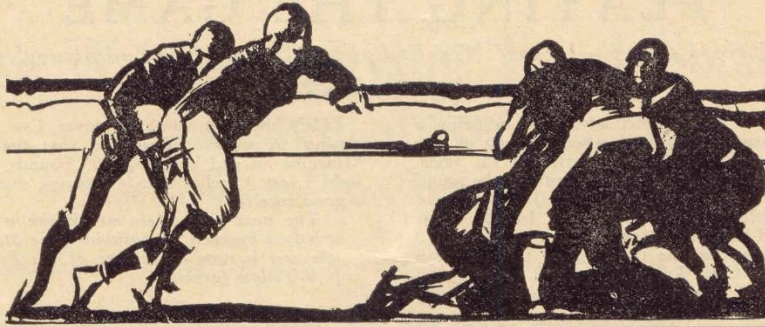
To make the best investment in a diamond you must either know diamond values expertly or purchase from a store that does. Since 1899 the Lyons Shops have been giving the public better diamond values. Our four-store buying power and our immense volume of business are the reasons.

S. J. LYONS CO.

Four Jewelry Stores with Immense Stocks

2258 NORTH FRONT STREET
2846 KENSINGTON AVENUE

4612 FRANKFORD AVENUE
2635 GERMANTOWN AVENUE



for Economical Transportation



COACH

\$637.00

Delivery Price	\$637.00
Down Payment	230.00
12 Monthly Payments	38.00 each

R. A. ERWIN MOTOR CO.

BUSTLETON AVENUE AND WELSH ROAD

BUSTLETON, PHILADELPHIA, PA.

Phone: BUS. 8350-1

LEAGUE SCHEDULE, 1928

Sunday, September 23rd

Frankford at Green Bay. 19-9.
Chicago Bears at Chicago Cardinals. 15-0.

Saturday, September 29th

Dayton at Frankford. 0-6.

Sunday, September 30th

Bears at Green Bay. 12-12.
Giants at Pottsville. 12-6.
Yankees at Providence. 7-20.

Saturday, October 6th

Boston at Frankford. 0-14.

Sunday, October 7th

Giants at Green Bay. 6-0.
Frankford at Providence. 10-6.
Yankees at Pottsville. 7-9.
Dayton at Cardinals. 0-7.

Saturday, October 13th

Yankees at Frankford. 13-0.

Sunday, October 14th

Giants at Chicago Bears. 0-13.
Cardinals at Green Bay. 0-20.
Dayton at Providence. 0-28.
Detroit at Yankees. 35-12.

Saturday, October 20th

Dayton at Frankford. 9-13.

Sunday, October 21st

Giants at Detroit. 0-28.
Green Bay at Bears. 16-6.
Providence at Yankees. 12-6.

Sunday, October 28th

Giants at Yankees. 10-7.
Detroit at Bears. 6-0.
Pottsville at Providence. 6-13.
Dayton at Green Bay. 0-17.

Saturday, November 3rd

Detroit at Frankford.

Sunday, November 4th

Frankford at Giants.
Detroit at Providence.
Yankees at Bears.
Green Bay at Cardinals.

Election Day, November 6th

Pottsville at Giants.

Saturday, November 10th

Pottsville at Frankford.

Sunday, November 11th

Frankford at Pottsville.
Detroit at Giants.
Dayton at Bears.
Yankees at Green Bay.

Saturday, November 17th

Providence at Frankford.

Sunday, November 18th

Frankford at Providence.
Green Bay at Giants.
Pottsville at Bears.
Yankees at Detroit.

Saturday, November 24th

Cardinals at Frankford.

Sunday, November 25th

Giants at Providence.
Cardinals at Yankees.
Detroit at Bears.

Thanksgiving Day, November 29th

Green Bay at Frankford.
Providence at Pottsville.
Cardinals at Bears.

Sunday, December 2nd

Yankees at Giants.
Frankford at Bears.
Green Bay at Providence.
Dayton at Detroit.

Saturday, December 8th

Giants at Frankford.

Saturday, December 15th

Bears at Frankford.



NINE MINUTES TO GO!

That's how quick you can reach GIBSON'S from this Stadium. It's the goal of all sportsmen.

Sports

VICTROLAS—RADIOLAS, K

WILL S. GIBSON

LINE-UP OF BOTH TEAMS

FRANKFORD YELLOW JACKETS

No.	Name	Position	Weight	Height	College
*2	WALLY DIEHL	Fullback	192	6.	Bucknell
*3	KEN MERCER	Quarterback	180	5.11	Simpson
*4	CHARLEY ROGERS	Halfback	163	5.10	Penn
5	JACK FILAK	Tackle	190	6.	Penn State
6	JOHN ROEPKE	Halfback	175	5.11	Penn State
*7	CHARLIE KASSEL	End	190	6.	Illinois
8	TWO-BITS HOMAN	Quarterback	157	5.5	Lebanon Valley
*9	ROGER MAHONEY	Center	195	5.11	Penn State
*10	TONY KOSTOS	End	190	6.	Bucknell
*11	ARNOLD OEHLRICH	Halfback	185	5.11	Nebraska
12	JOEY MAXWELL	Center	192	6.1	Notre Dame
13	DUTCH HOFFMAN	Halfback	190	5.11	West Virginia
*14	BULL BEHMAN	Tackle	210	5.10	Dickinson
*15	RUDY COMSTOCK	Guard	210	5.10	Georgetown
16	ED WEIR	End	192	6.1	Nebraska
17	HOUSTON STOCKTON	Fullback	195	5.11	Gonzaga
18	FAIT ELKINS	Quarterback	190	6.	Haskell
*19	BUB WELLER	Tackle	238	6.4	Nebraska
*20	HAROLD HANSON	Guard	190	6.	Minnesota
0	CARL WAITE	End	205	5.9	Rutgers

* Starting line-up of Yellow Jackets.

NEXT SATURDAY, NOVEMBER

Willard

w
A

ing Goods

A FIELD GOAL!

When you see the ball go over—you're looking at a GIBSON football, Coats supplied, too.

Serving Sportsmen for over 32 years

- SWeaters
- IndIan Clubs
- GoLf
- Basket BaLl
- Roller Skates
- Fishing Tackle
- Tennis
- FootBall
- Ice Skates
- SOccer
- SpriNg Exercisers

ODAKS, FILMS, RECORDS

"Equipment for Sport of the Quality Sort"
4626 FRANKFORD AVENUE

MS FOR TODAY'S GAME

BENNY FRIEDMAN'S DETROIT WOLVERINES

No.	Name	Position	Weight	College
1	WM. OWENS	Tackle	210	Phillips U.
2	JOE WOSTOUPAL	Center	210	Nebraska
3	ERNIE VICK	Guard	200	Michigan
4	L. CAYWOOD	Tackle or Guard	240	Oklahoma
5	ROBERT HOWARD	Guard	230	Oklahoma
6	TOM COBB	Tackle	250	Arkansas U.
7	JOHN BARRETT	Center	170	U. of Detroit
13	PROC RANDELS	End	180	Kansas Aggies
14	L. SEDBROOK	Halfback	175	Phillips U.
15	E. SHEARER	Quarterback	165	Notre Dame
16	REX THOMAS	Halfback	175	St. Johns, Brooklyn
17	P. JACKSON	Fullback	200	Missouri
18	CARL BACCHUS	End	210	Missouri
19	LYLE MUNN	End	190	Kansas Aggies
20	E. FEATHER	Fullback	195	Kansas Aggies
21	B. FRIEDMAN	Quarterback	185	Michigan
22	OSCAR WIBERG	Halfback	210	Nebr. Wesleyan

Coach and Manager—Leroy B. Andrew.

Referee—Eichelberger.

Umpire—Porter.

Linesman—Shirkey.

All from Baltimore.

10th — POTTSVILLE MAROONS

Villard Chevrolet

4100 Frankford Ave.

good place to buy your Car

Boosters of the
YELLOW JACKETS
and the
GREAT NORTHEAST



**EDGEWATER DYEING AND
FINISHING WORKS**

Dyeing : Finishing : Printing : Napping

4080 FRANKFORD AVENUE

You can now buy a new straight-eight
PACKARD 5 Passenger Sedan,
Fully Equipped and Delivered for

\$2555.00

FRANKFORD PACKARD

4730 FRANKFORD AVENUE

Del. 2200—Open Evenings

Linton's **LUNCH**

4701 FRANKFORD AVENUE

5243 FRANKFORD AVENUE

Thirsty? Just ~ WHISTLE

It is for sale right here—try it. You will like its true, fruit flavor. You can buy it wherever good bottled beverages are sold.

Look for the "Handy" Bottle

JOHN FRIEDRICH, Rising Sun Avenue at Fifth Street

THE ANNOUNCER DRINKS BLUE ANCHOR GINGER ALE

You Naturally Want
the Best



VISIT OUR

NEW OPERATION

Anchor and Large Streets

George R. Osborne & Sons

Builders

Bell Phone—JEfferson 9953

HARRY W. KEENE

Repair Parts for All Cars

1201 BRIDGE STREET

Bell Phone

Philadelphia, Pa.

Some Interesting Data on Last Saturday's Game with Millville

Compiled by Joe Evans and Wm. Fahrbach

TOTAL YARDS GAINED

Frankford 779 yds. Including Punting	{	Through Scrimmage, 97 yds.
		Intercepted Passes, 20 yds.
		Running Back Punts, 84 yds.
		Forward Passes, 245 yds.
		Punting, 333 yds.

Millville 629 yds. Including Punting	{	Through Scrimmage, 61 yds.
		Intercepted Passes, 10 yds.
		Running Back Punts, 89 yds.
		Forward Passes, 109 yds.
		Punting, 360 yds.

YARDAGE GAINED BY LONGEST PASSES

FKD.—Stockton to Mercer—53 yds.
 FKD.—Stockton to Oehlich, 33 yds.
 FKD.—Mercer to Rogers, 30 yds.
 FKD.—Mercer to Rogers, 25 yds.
 FKD.—Mercer to Oehlich, 22 yds.
 FKD.—Mercer to Oehlich to Kostos, 20 yds.
 MILLVILLE—Sullivan to Elliott, 20 yds.
 MILLVILLE—Hamer to Ford, 15 yds.
 MILLVILLE—Hamer to Ford, 11 yds.
 FRANKFORD'S FIRST DOWNS—9.
 Diehl—3. Oehlich—4. Mercer—1. Kostos—1.
 MILLVILLE'S FIRST DOWNS—9.
 Ford—3. Hamer—2. Elliott—2.
 Sullivan—1. Penalty—1.
 FKD. threw 26 passes—15 completed, 2 intercepted.

Millville threw 35 passes—14 completed, 4 intercepted.

PENALTIES—Fkd., 45 yds.; Millville, 40 yds.

TOUCHDOWNS—Fkd., 4; Rogers, 2; Diehl, 1; Kostos, 1.

POINT KICK—2; Behman, 1; Roepke, 1.

TOTAL PUNTING YARDAGE

FRANKFORD—333 yds.
 Diehl—5 kicks—144 yds. Average 28 4/5 yds.
 Mercer—2 kicks—74 yds. Average 37 yds.
 Elkins—3 kicks—115 yds. Average 38 1/3 yds.

MILLVILLE—360 yds.
 Hamer—11 kicks—360 yds. Average 32 8/11 yds.

RUNNING BACK PUNTS

FRANKFORD—Rogers 84 yds.
 MILLVILLE—Sullivan 54 yds.
 MILLVILLE—Hamer 28 yds.
 MILLVILLE—Gordon 7 yds.

TOTAL YARDS GAINED THROUGH SCRIMMAGE

FRANKFORD	MILLVILLE
Diehl—17 yds.	Elliott—11 yds.
Rogers—8 yds.	Sullivan—9 yds.
Mercer—7 yds.	Ford—5 yds.
Oehlich—4 yds.	Hamer—4 yds.
Stockton—3 yds.	Miller—2 yds.
Elkins—3 yds.	Gordon—1 yd.
Roepke—1 yd.	

MEMBER FEDERAL RESERVE SYSTEM

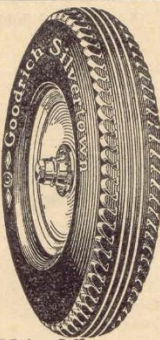
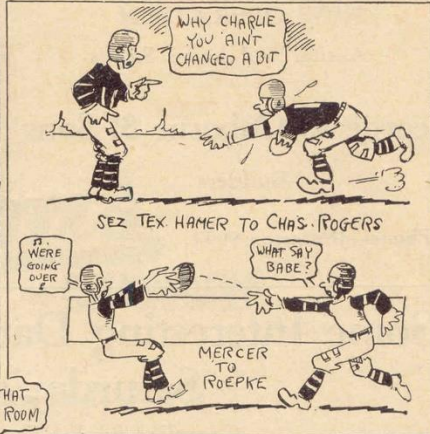
Northeast-Tacony Bank & Trust Co.

Longshore Street and Torresdale Avenue

TACONY, PHILADELPHIA, PA.

Assets Over \$2,000,000

MAC SEES A FEW OL' FRIENDS



Main Office
221 No. 22d St.

Goodrich Silvertowns

"Best in the Long Run"

Foster, Miller & Bierly, Inc.

4613 Torresdale Avenue
(Above Orthodox)

GUNS

KODAKS

HOWARD GEORGE

"The Sporting Goods Store"

Athletic Goods of Every Description, Priced Right

4359 FRANKFORD AVENUE
(At Unity Street)

Both Phones

Open Monday, Friday and Saturday Evenings

Established 36 Years

VICTROLAS

RADIO

We Serve the Northeast

OXFORD COAL

A Quality Product

YARDS { 33rd and MASTER STS.
5622 TACONY STREET

THOMAS D. O'BRIEN, *President*

News of the League

Gossip You Like to Read About the Teams

Harry O'Boyle, a Rockne product, is playing a swell game at fullback for the Green Bay Packers. O'Boyle isn't as heavy as the usual run of pro fullbacks but he carries a punch which always spells plenty of yardage.



Hinky Haines is back in the fold with the New York Giants. He was a holdout for five weeks but finally came to terms with the management. When going right, there isn't a better ball lugger than Haines in the Carr loop.



A change of scenery has done Weller, Frankford tackle, a world of good. The Hornets grabbed him from the Chicago Cardinals and so far this season he has been the one best bet on the Yellow Jackets' line of scrimmage.



Roy White is hogging his share of glory with the Chicago Bears. He is a triple-threat artist. White is a consistent line plunger. He isn't a half bad passer and in a pinch he will average about 50 yards with his punts.



Wild Bill Kelly, one time Montana flash, has more than been earning his salt with the New York Yanks. Kelly plays either quarter or half and he prances around pretty lively. He makes a specialty of grabbing forward passes.

One of the features of Pottsville's play this fall has been the brilliant exhibition of Ernst at quarterback. Ernst has been with the Maroons for many a gridiron season but he never looked better than right now.



Swede Erickson, W. and J. star of other years, is still pretty much at home with the old football. This is his fourth season with the Chicago Cardinals and he is one of the few O'Brien-men playing right up to their peak form.



Providence mixes up its attempts for the extra point after touchdown. In a recent game against Dayton, the Steam Rollers added four points by a drop kick, placement, pass and once Gus Sonnenberg rushed the ball across.



Jones, Packer guard, broke into the hero class in last Sunday's game against the Bears. Paddy Driscoll tried a pass from behind his own goal line. Jones blocked it then caught the ball and fell over the line for a touchdown.



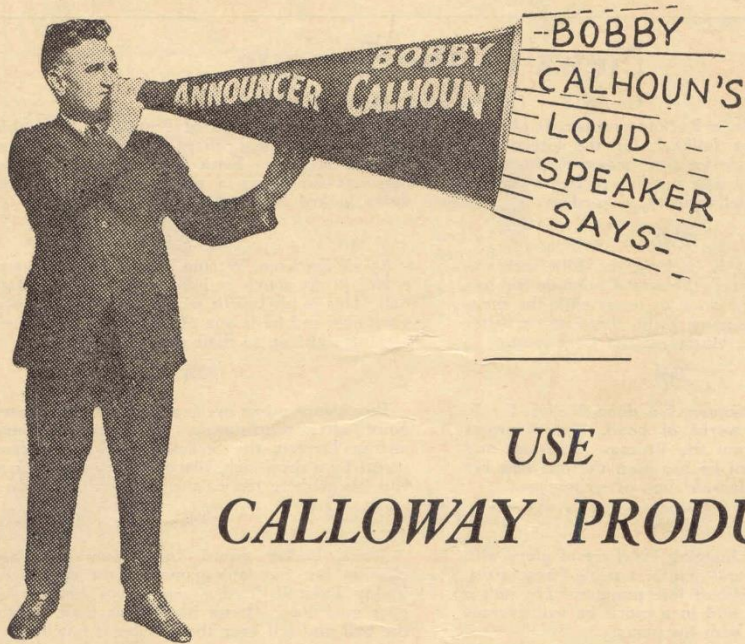
A number of the National League footballers are rated among the topnotchers in heavyweight wrestling. Sonnenberg and Spellman of Providence are high-class grapplers and so is McMillin, veteran Chicago Bear guard.

SUBURBAN
LAUNDRY

BALDWIN'S
DAIRIES

The Official Announcer

FRANKFORD ATHLETIC ASSOCIATION



USE
CALLOWAY PRODUCTS

CALLOWAY COAL COMPANY

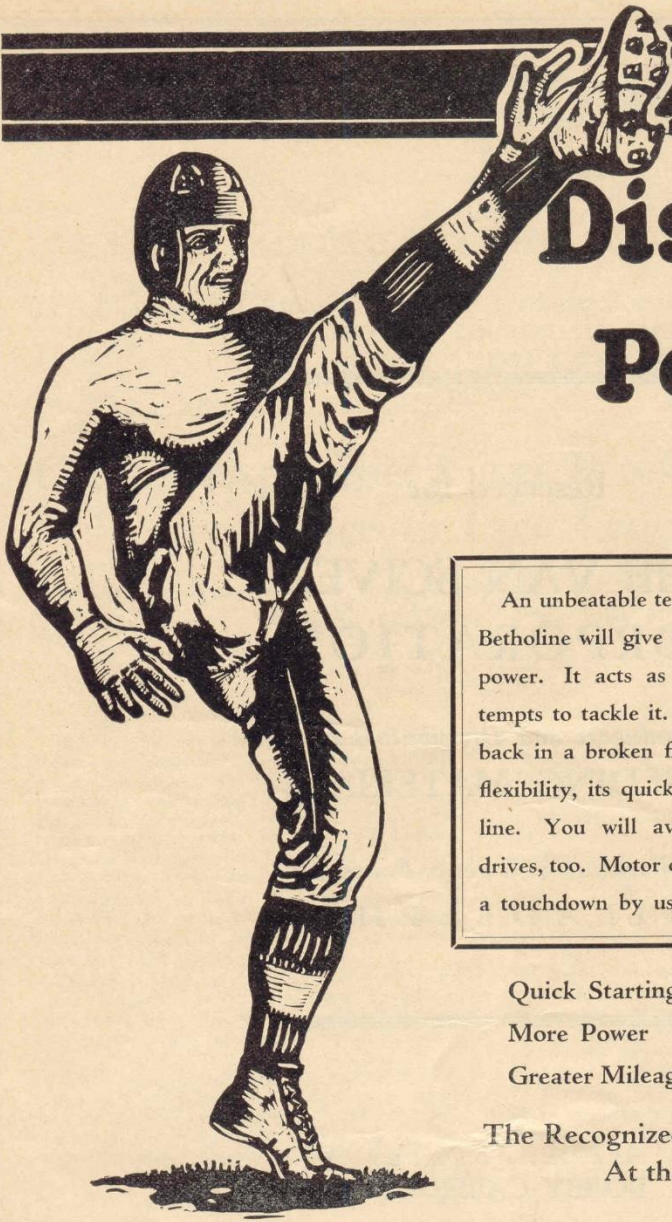
Coal and Builders' Supplies

Main Office and Yard
LANSDOWNE AVENUE
UPPER DARBY, PA.

Branch Office and Show Room
126 WEST CHESTER PIKE
LLANERCH, PA.

Hilltop 2171

Hilltop 1987



Distance and Power!

An unbeatable team—Betholine and your motor. Betholine will give any motor that extra drive and power. It acts as interference when carbon attempts to tackle it. In traffic you feel like a half-back in a broken field—you marvel at your car's flexibility, its quick pick-up when you use Betholine. You will average more distance to your drives, too. Motor contentment is your goal—score a touchdown by using Betholine.

Quick Starting

No Knocking

More Power

No Carbon

Greater Mileage

Fewer Repairs

The Recognized Leader of Motor Fuels
At the Green Pumps

BETHOLINE

THE LEADING MOTOR FUEL
SHERWOOD BROS., Inc., Phila.

Reserved for

**THE VAN SCIVER
CORPORATION**

—*Producers and Distributors of*—
BUILDING MATERIALS

The Parkway at Twenty-Fourth St.
P H I L A D E L P H I A

·:~] *Ask Announcer*]~:·
BOBBY CALHOUN

Firestone

Solid—Cushion—Pneumatics

ALSO

OLDFIELD—COURIER—AIRWAY

Firestone Built Tires

12 Stations in Philadelphia

Master Service Station in Frankford

FRANKFORD AND TORRESDALE AVENUES

WALTON TIRE SERVICE

Greater Experience Gives Pro Gridders Confidence to Face Crucial Moments

*Nervousness Often Causes College Boys to "Fall Down" on Try for Point.
"Football-for-Money" Lads Seldom Fail*

By STONEY McLINN

Evening Public Ledger

Bob Folwell, whose football opinions always commanded respectful attention, once said that a gridiron athlete was at his best as a professional because he was "just beginning to learn the game after his four years in college." That wise observation came to mind last Sunday afternoon as we watched the Frankford Yellow Jackets sting the Clifton Heights Panthers.

To properly introduce the point we seek to emphasize, we call your attention to three important games of the late week-end which were won by a try-for-point goal.

Dickinson defeated Ursinus, 7-6; Gettysburg upset Bucknell, 14-12, and Iowa nosed out Minnesota, 7-6. Skill at adding the point after touchdown would have given the three losers ties.

When a boy in college has to kick that one-point goal which may mean victory or defeat he's as nervous and fidgety as a public school declaimer on Parents' Day. Usually all his teammates share his panicky condition.

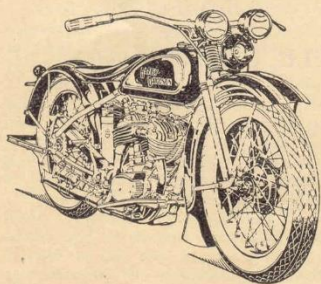
Well, when those Yellow Jackets want a point after touchdown what do they do? Fait Elkins, the brilliant Indian quarterback, whispers to his fellow backs.

The ball is snapped from center with the stage set for a placement kick. But Stockton is suddenly erect with the ball cocked and passes to Kostos, an end, who is in the midst of the enemy. (Clifton expected a pass.)

What the Panthers didn't know or suspect was that Kostos would chuck the pumpkin laterally to Roepke, who toted it over the line for the point without a hand being laid on him.

It was not the success of the play that impressed us. It was the *sang froid*—the word Gene Tunney would use as a synonym for composure—shown by the wage-earning athletes that caught our fancy.

If college lads could pass that same calm Barry-to-Collins-to-McInnis double-play confidence into their try-for-point efforts there would be few misses.



The New "45"

By Harley-Davidson

The Machine the World Has Been Waiting for Harley-Davidson to Build

PHILADELPHIA

HARLEY-DAVIDSON COMPANY

RISING SUN AVENUE AT 13TH STREET

Delivers in Philadelphia for \$298 or \$107 Down, Balance Pay-As-You-Ride

PHILADELPHIA TEXTILE MANUFACTURERS' ASSOCIATION

3530 KENSINGTON AVENUE, PHILADELPHIA, PA.

*A Service Organization for the Benefit
and Protection of the Textile Industry
of Philadelphia and Vicinity.*

With a Membership of Over 300 of
the Leading Textile Manufacturers.

Are You a Member?

If not, it will be to your interest to
become a Member.

CHARLES J. WEBB, *President*

ALLEN R. MITCHELL, *Chairman*
Board of Directors

C. MARLIN BELL, *General Manager*

Phone—JEfferson 3947-3948-3949

When you want to buy or sell
real estate or rent an apartment

SEE
GEO. T. SALE

TWO OFFICES:
238 S. Thirteenth Street
Frankford and Oxford Avenues

3 DOORS EAST OF OLNEY BANK

Permanent Waving

TRY

GARDNER and SONN
SPECIALISTS

429 W. TABOR ROAD

Waverly 6805

HAIR DRESSING

FINGER WAVING

**SCALE OF TICKET PRICES
FOR 1928**

North Stand—

Seats 53 to 161 and Top Row	
60 to 175.....	\$1.75
All other seats excepting Boxes	1.50
Box Seats—Upper	2.25
Box Seats—Lower	2.00

South Stand—

Seats 57 to 168 and Top Row	
60 to 185.....	\$1.75
All other seats excepting Boxes	1.50
Box Seats (Lower Only).....	2.00
All Bench Seats	2.00

In order to facilitate the more rapid handling of tickets at the gates, signs, painted colors corresponding to the colors of the different tickets, have been erected so that the color of your ticket denotes which gate you enter.

Please retain the stub of your ticket in case of error in seating arrangements.



ADVANCE TICKET SALE

Tickets for all games on sale at the F. A. A. Ticket Office in the Lawson Building, Frankford Ave. and Paul Street, 2d Floor, every evening from 7 to 9 o'clock.



**JUST WHAT WE EXPECTED; GIANTS
IN GOOD SHAPE**

(Continued from page 11)

attendance last week at the Yankee Stadium, where the Giants played, running anywhere from 18,000 to 25,000.

Caldwell had received the offer of help from many Yale alumni who were anxious to help him following his being declared ineligible for intercollegiate competition, but Caldwell preferred to work out his own problem and turned to professional football as the answer.

Hinkey Haines, who was a holdout for the early weeks has been in action for the past two weeks and is playing his usual bang-up game. Haines is the son of a Pennsylvania minister and married the daughter of another preacher of the good book.

**"BENNY" FRIEDMAN AND HIS LEAGUE
LEADING AGGREGATION**

(Continued from page 3)

Leonard Sedbrook, another of the backs is a shifty runner, great passer and pass receiver. Although this is his first year in professional football he has 150 yards to his credit from scrimmage.

Horace Randels, one of the ends is regarded as the scrappiest player on the squad. Carl Bacchus, another of the ends weighs 210 pounds. He is Benny's greatest target and doing a splendid job of substituting for Oosterban. He is a great blocker and defensive player. The other end, Lyle Munn, is a cousin of Wayne Munn, wrestler, and Monte Munn, the fighter.

It might be mentioned that Bacchus, who was captain of Missouri University in 1926, is credited with throwing a forward pass 55 yards. Tom Cobb, one of the tackles, is the biggest man on the squad tipping the scales at 250 pounds.



**WILBUR HENRY'S POTTSVILLE
MAROONS HERE NEXT SATURDAY**

(Continued from page 7)

1922, 1923 and 1924. He was a star at college in track, boxing and wrestling.

Herb Stein, one time snapperback for the Jackets, also was an All-American selection for Walter Camp. Hap Moran, who is playing great ball for the Maroons, was with Frankford in 1926 and part of 1927.

Other favorites are with the upstaters, including Jack Ernst, quarterback, also a former Lafayette luminary; Tony Latone, regarded as one of the greatest plunging backs in the game; Duke Osborne, who gained fame at Canton; with Harry Robb, Jim Thorpe, Pete Calac and others; but one player will be missed.

Barney Wentz, the Pottsville fullback has retired as a player with the Maroons, although he is expected to continue with one of the other coal region combinations. Wentz recently had the misfortune to run over and injure a miner who later died of his injuries. Whether this had anything to do with Barney's course is not known but he will be missed.

The Pottsville game always is full of color and attracts the largest crowd of the season.

FRANKFORD Wholesale Candy Co.

1621 ORTHODOX STREET

Phone: JEFferson 5767

*We sell the Yellow Jackets.
How About You?*

West 1886

Allegheny 2791

PEARL & JENKINS

104-106 NORTH 63RD STREET

AUTO CAR EXPERTS

*The only repair shop that guarantees repairs
six months. Let us estimate on your next job.*

Established in 1919

Summary of the More Important Penalties

1	Offside, both sidesNo penalty	
2	Offside	5 yards
3	Holding, etc., by defensive side	5 yards
4	Second or third incompleting forward pass during the same series of downs	5 yards
5	Crawling	5 yards
6	Taking out time more than three times during a half, etc.	5 yards
7	Running into kicker	5 yards
8	Substitute failing to report	5 yards
9	Unreasonable delay in putting ball in play	5 yards
10	Starting forward before ball	5 or 15 yards
11	Fair catch, taking more than two steps after catch	5 yards
12	Attempt to draw opponents offside	5 yards
13	Interference with opponents before ball is put in play	5 yards
14	Feint to snap ball	5 yards
15	Illegal tackling	5 yards
16	Neutral zone, encroachment on	5 yards
17	Player out of bounds	5 yards
18	Illegal use of hands and arms by offense	15 yards
19	Interference with fair catch, etc.	15 yards
20	Roughing kicker	15 yards
21	Substitute communicating before first play	15 yards
22	Unnecessary roughness	15 yards
23	Pushing, pulling, interlocked interference, etc.	15 yards
24	Forward passing, intentional throwing to ground	15 yards
25	Leaving field during one minute intermission	15 yards
26	Man going on field without permission	15 yards
27	More than one non-playing man going on field	15 yards
28	Coaching from sidelines	15 yards
29	Hurdling	15 yards
30	Tripping	15 yards
31	Unsportsmanlike conduct	15 yards
32	Clipping from behind	25 yards
33	Piling up	15 yards
34	Kicking loose ball	Loss of ball
35	Loss of "down" for one of various reasons(See Rule Book)	
36	Foul by defense on try for point	Point awarded
37	Illegal return to game	
	Half distance to goal and disqualification	
38	Slugging	
	Half distance to goal and disqualification	
39	Man in motion—no shift	5 yards
40	Man in motion on shift	15 yards
41	Delaying in starting game or second half	25 yards
42	Interference on forward by offense	Loss of ball

NEXT SATURDAY
POTTSVILLE
ANOTHER GAME WORTH SEEING
LET'S GO!

Champion Bugle Corps and Yellow Jacket Band to Accompany Team and Rooters to New York

Tomorrow the Yellow Jackets make the Annual Pilgrimage to New York City where they will invade the lair of the New York Giants.

The event marks the official opening of the Gothamites home season at the Polo Grounds. Each year the Jackets and their followers travel by special train, accompanied by the Yellow Jacket Band and Champion Bugle Corps of Frankford Post 211, American Legion. This year the same program has been arranged. The Bugle Corps will give an exhibition drill at the Polo Grounds between the halves, the same drill that was executed at the National Legion Convention in San Antonio when they captured third honors.

Judging from the advance sale of tickets the largest crowd ever to make the trip will be on hand. It is not too late to make reservations. Full details below:

Yellow Jackets Play NEW YORK GIANTS SUNDAY, NOVEMBER 4 at the Polo Grounds in New York City

SPECIAL TRAIN

Leaves Frankford Junction 9.00 A. M.

“ Wissinoming 9.06 A. M.

“ Tacony 9.09 A. M.

Returning Leaves New York 9.00 P. M.

Tickets for Special Train, \$3.55 Round Trip

*Tickets for Game on Sale at the F. A. A. Ticket Office,
2nd Floor, Lawson Building, Paul Street at Frankford Ave.*

MAKE RESERVATIONS EARLY

National League Schedule, Results and Standing of Teams

SATURDAY'S RESULTS

Frankford, 26; Millville, 0 (*Not a League game*).

SUNDAY'S RESULTS

Frankford, 20; Clifton Heights, 6 (*Not a League game*).

New York Giants, 10; New York Yankees, 7.
Providence, 13; Pottsville, 6.
Green Bay, 17; Dayton, 0.
Detroit, 6; Chicago Bears, 0.

TODAY'S GAMES

Detroit at Frankford.

SUNDAY'S GAMES

Frankford at New York Giants.
Detroit at Providence.
New York Yankees at Chicago Bears.
Pottsville at Green Bay.

ELECTION DAY GAMES

Pottsville at New York Giants.

STANDING OF THE TEAMS

	W.	T.	L.	P.C.
Detroit	3	0	0	1.000
Frankford	4	0	1	.800
Providence	4	0	1	.800
New York Giants	3	0	2	.600
Green Bay	3	1	2	.600
Chicago Bears	2	1	2	.500
Pottsville	1	0	2	.333
Chicago Cardinals	1	0	2	.333
New York Yankees	1	0	5	.200
Dayton	0	0	5	.000

1928 Scoring Record

- † * 1—Frankford 12; Orange 0.
- * 2—Frankford 19; Green Bay 9.
- 3—Frankford 6; Dayton 0.
- † 4—Frankford 14; Boston 0.
- * 5—Frankford 10; Providence 6.
- 6—Frankford 0; N. Y. Yankees 13.
- 7—Frankford 13; Dayton 9.
- † * 8—Frankford 14; Stapleton 13.
- † 9—Frankford 26; Millville 0.
- † * 10—Frankford 20; Clifton Heights 6.

* Denotes Sunday Games.

† Not League Games.

Scoring Record of Yellow Jackets

Name	T. D.	F. G.	E. P.	Total
Roepeke	4	1	6	33
Mercer	4		2	26
Diehl	4			24
Rogers	4			24
Homan	1			6
Maxwell	1			6
Kostos	1			6
Stockton	1			6
Weir			2	2
Behman			1	1
				134

Detroit Clings to First Place in League; Caldwell Stars as Giants Defeat Yankees

Providence Steam Roller Crushes Maroons, But Pottsville Stages Rally.

Triangles Trimmed

Detroit clings to first place in the National Football League. The Friedman aggregation tumbled the Bears on Wrigley Field in Chicago last Sunday, 6 to 0, in a closely contested game. The lone tally of the Wolverines came in the final quarter when Friedman's great passing and running put the ball on the Bears' 1-yard line from where Jackson, former Missouri star, took it over.

The Bears came right back and carried the ball to Detroit's 5-yard line, where they were stopped and Detroit again began a march down the field and had the ball inside the final white stripe when the game ended.

Twenty-five thousand fans were at the Yankee Stadium in New York to watch the Giants tumble the New York Yankees, 10 to 7. The fans were not disappointed. The crowd apparently was there to see Bruce Caldwell, former Yale ace and Gibby Welch, Pittsburgh's All-American backfield star of last year. Both stars scored the touchdowns credited to their teams but Bruce was assigned to the task of drop kicking a field goal and he arose to the occasion

admirably. The said field goal proved the winning margin and Caldwell got the nod when it came to doling out the individual glory.

Pottsville lost to the Steam Roller at Providence, and in winning the Rhode Islanders moved up on even terms with Frankford for second place. The Maroons made a great stand, however, and nearly tied the score at the finish. The final count read Steam Roller, 13; Pottsville, 6.

Wildcat Wilson was real wild and played havoc with Pottsville early in the game when he and Oden scored touchdowns. Pottsville came back and had the home team on the run near the finish. The Maroons scored in the final quarter and near the finish worked the ball to the Providence, 2-yard line, just shy of a first down. When a forward pass from Ernst was incompleting, Pottsville lost the ball on downs and Wilson immediately kicked out of danger.

The other League game ended in a 17 to 0 triumph for Green Bay over the Dayton Triangles.

Both Phones

JOHN A. QUINN

Plumbing and Heating

4324 PAUL STREET

FRANKFORD

PHILADELPHIA

ESTABLISHED 1858

Thos. W. Schumacher

Interior Decorator

SHOWROOM AND OFFICE

4411 FRANKFORD AVENUE

PHILADELPHIA

FRANKFORD

Phone, JEF. 6000

JEfferson 9485-8

ASHBY'S

OYSTER HOUSE

and

RESTAURANT

4804 FRANKFORD AVENUE

For the Best Oysters We Lead

SNAPPER SOUP

DEVILED CRABS

WILLIAM HEYS

Insurance

All forms, including Life

DREXEL BUILDING

Lombard 2497

KNOW THE NEWS OF YOUR TOWN

By Getting Your Name on the Mailing List of

The Frankford Gazette

Oldest Community Newspaper in Philadelphia

59th Year—Published Every Friday

One Dollar Per Annum

PRINTING OFFICE—4432 Frankford Ave.

ESTABLISHED 1875

WALKER MFG. CO.

Manufacturers of

LOOM REEDS, HEDDLES,

HEDDLE FRAMES, ETC.

RUTH AND ATLANTIC STS.

PHILADELPHIA, PA.

UNITED REPUBLICAN CLUB

23RD WARD

F. A. A.

Booster

FRANKFORD AND NORTHEAST!
A GOOD PLACE TO LIVE!

Get the Community Spirit and
Become a Regular Reader
of Your Home Paper

The Frankford Dispatch

Issued Every Friday

BY MAIL, \$1.50 PER YEAR



There's No Stopping Him!

JUST like a husky half-back who hits the line for a gain every time—that's the chap who banks regularly. There's no stopping him in what he wants, because he has or will have funds to support his ideas.

If you have no cash reserve, sooner or later the hard tackler, Life, will throw you for a loss. Join up with the Oxford Thrift Team! You'll find the coaches friendly, likable, and interested in you and your problems.

OXFORD BANK AND TRUST COMPANY

FRANKFORD AND OXFORD AVENUES

MEMBER
FEDERAL
RESERVE
SYSTEM



OTHER
OFFICES

Burholme
Bridesburg
Wissinoming
Orthodox St.