

CHICAGO

NEW YORK

BEARS vs. ***GIANTS***

**OFFICIAL
PROGRAM**

35c



**K. of C.
VARIETY CLUB
CLASSIC**

CRUMP STADIUM

•

SEPTEMBER 2, 1951

Station WHHM — 1340

*Falstaff's
got
something!*

...FOR YOUR EXTRA ENJOYMENT!



Major League Baseball

Listen **0:00 P. M. Station XXX (000)** on your dial

Hear the crucial games...the best Major League games...play-by-play every day throughout the season!

Falstaff's *got* something!...for your *extra* pleasure. And Falstaff brings you major league baseball for your *extra* enjoyment!



Sadler Distributing Co.

440 N. Second

5-7433



Meet Chunking Charley Conerly of the New York Giants, former Ole Miss All-American. He's a quarterback.

HAVE A COKE



Coca-Cola=Coke

"Coca-Cola" and its abbreviation "Coke" are the registered trademarks which distinguish the product of The Coca-Cola Company.

DRINK

Coca-Cola

Coca-Cola Bottling Co., of Memphis, Tenn.



READY TO GO—Johnny Lujack is starting to cut loose on behalf of the Chicago Bears. Lujack was one of Notre Dame's—and college football's—greatest passers in history before joining the Bears.

Fire—Automobile and General Insurance
Liberal Real Estate Loans
Real Estate Sales



E. H. CRUMP & CO.



"The South's Largest Direct Writing
Insurance Agency"



Here's a conference while arrangements were being made for today's classic. Left to right—S. A. (Monk) Godman, chairman for the Knights of Columbus; M. H. Brandon, chairman for the Variety Club; Wellington Mara, vice-president of the New York Giants; and Charley Conerly, Giants' star quarterback.

NATURAL GAS
THE FUEL OF TODAY
AND
TOMORROW



TEXAS GAS TRANSMISSION CORP.

MEMPHIS, TENN.

Put your foot down
-and lead a new life

● ITS A FIREBALL ENGINE



Want to start something?

Just slip behind the wheel of this spacious Buick, put your foot down—and feel what happens.

When that big and eager valve-in-head Fireball Engine swings into action—whisks from standstill to cruise in a handful of seconds—you'll find a brand-new zest in travel.

As Dynaflo Drive* flows power to rear wheels, so velvety, so smooth—you'll discover a joyous new ease in going places.

With coil springs on each Buick wheel to snub the drubbing of bumps and ruts, you'll know a new kind of comfort—a ride that skims the road like a swan on a pond.

You'll find new ease, too, in the many

uncommon touches this smart beauty brings you. In the softness of its deep, wide seats—in the lightness of its handling—in the shading of its new glare-and-heat-reducing glass.†

And beyond all this, you'll find great satisfaction in the price you pay for a 1951 Buick SPECIAL, SUPER or ROADMASTER—a lower price than you'll pay for any other car of comparable weight, power, room, comfort and equipment.

So—how about it? Want to change your whole motoring picture, and be happier for it?

Want to see what a wonderful new motoring life you lead at the wheel of a new Buick—and how big a buy you get?

Then come visit us soon—and the sooner the smarter.

Equipment, accessories, trim and models are subject to change without notice.
 *Standard on ROADMASTER, optional at extra cost on other Series.

†Optional at extra cost—available on most models. (Not presently available in California or Massachusetts)

NO OTHER CAR PROVIDES ALL THIS:

DYNAFLOW DRIVE* • FIREBALL ENGINE
 4-WHEEL COIL SPRING • DUAL VENTILATION
 PUSH-BAR FOREFRONT • TORQUE-TUBE DRIVE
 WHITE-GLOW INSTRUMENTS • DREAMLINE STYLING
 BODY BY FISHER

WHEN BETTER AUTOMOBILES ARE BUILT BUICK WILL BUILD THEM

Tune in HENRY J. TAYLOR, ABC Network, every Monday evening.

"Smart Buy's Buick"

Your Key to  Greater Value

SEE YOUR NEAREST BUICK DEALER



One of the founders of the National Football League, owner and head coach George Halas of the Chicago Bears.

Road Gravel and Dirt

— EXCLUSIVELY —

R. P. HARRIS GRAVEL PIT CO.

"Since 1939"



F. L. "MUTT" ABERNATHY, Owner

TELEPHONE 35-2391

SHELBY DRIVE

WHITEHAVEN, TENN.

OFFICIAL TIMING WATCH FOR THE

CHICAGO BEARS vs. NEW YORK GIANTS GAME

Longines

The World's Most Honored Watch

THE WORLD STANDARD OF ACCURACY FOR SPORTS
TIMING . . . 10 WORLD'S FAIR GRAND PRIZES, 28 GOLD
MEDALS . . . HIGHEST OBSERVATORY ACCURACY HONORS



Product of

Longines-Wittnauer Watch Company

SINCE 1866, WATCHES OF THE HIGHEST CHARACTER

LONGINES WATCHES from \$71.50; WITTAUER WATCHES from \$34.75



LUCHESE'S LIQUOR STORE

74 Union Ave.

MEMORIAL STUDIO

889 Union

P & H CURTAIN SHOP

1382 Overton Park Ave.

General Sales & Fluorescent Co.

A FRIEND

A. A. MOTORS

455 Union Ave.

DIXIE LIQUOR STORE

139 Beale Ave.

Universal Life Insurance Co.

480 Linden Ave.

J. C. "Joe" Pendergrast & Son

Sterick Bldg.

Crosstown Transfer & Storage Co.

2004 Carnes Ave.

Phone 7-4550

Lucky Heart Laboratories, Inc.

W. M. ELLIS PRODUCE CO.

179 S. Front

CARDINAL HATCHERIES

3365 Summer Ave.

ROBINSON TRUCK LINES

158 E. Virginia

J. A. Tapp Lumber Co.

3637 Lamar

R. CLUCK FLOOR CO.

825 Jefferson

RAY'S DONUT SHOP

FISCHER

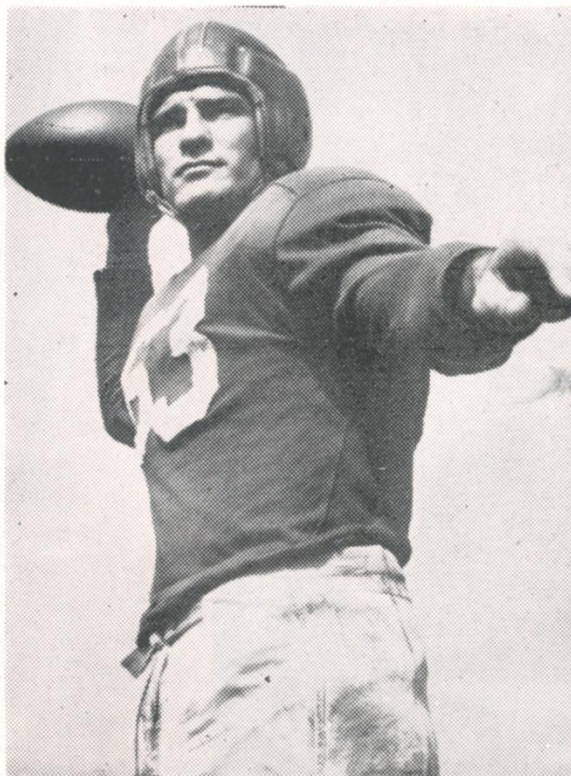
HEATING & PLUMBING CO.

BRUCE TERMINIX CO.

Sam Belz Upholstered Products

REG BEAZLEY

365 Court



PASSING ACES—Charley Conerly, left, and Johnny Lujack. Conerly will fire today for the Giants, with Lujack for the Bears.

"As Memphis Knows, So Will America"

Leonard's Pit Barbecue

IS SUPREME

1140 South Bellevue

ALLEN & HOSHALL

CONSULTING ENGINEERS

65 McCall Place

Memphis, Tenn.

MALONE & HYDE, INC.

WHOLESALE

157 S. Parkway E.

MISS HUTCHISON'S SCHOOL

Kindergarten — Through High School

Accredited by All Agencies
and Institutions

Art, Music, Dancing, Journalism
Domestic Science, Typing, French, Spanish
English, History, Latin, Math.

1925 Union Ave.

Phone 7-1496

Smith Store Fixture Mfg. Co.

376 S. Main

Phone 38-1354

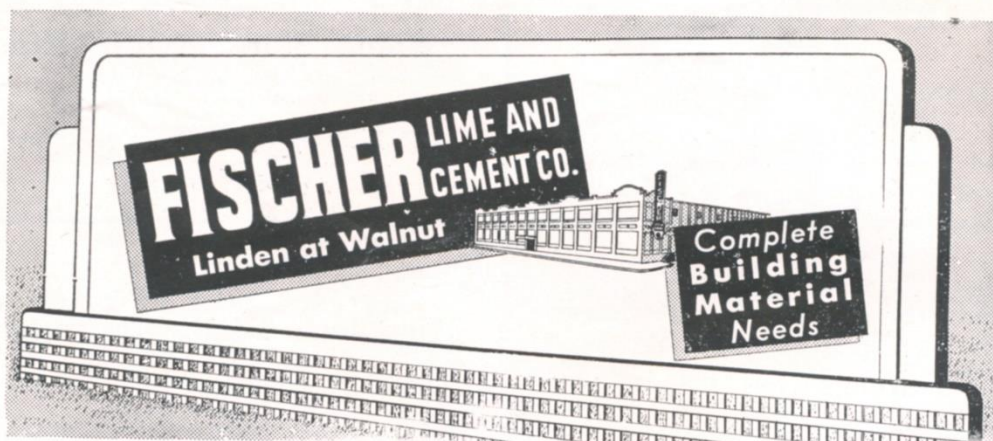
Southern Textile & Supply Co.

287 S. Bellevue

Phone 32-2981



The big moment came for Bob Williams (left) Notre Dame's great passer last year, as he shook hands with George Halas, owner of the Chicago Bears. Williams had just signed a pro contract to replace the retiring Sid Luckman in the Bears' lineup. Left to right—Williams, Luckman, Notre Dame Head Coach Frank Leahy, Johnny Lujack (another former Irish passing star with the Bears), and Halas.



FOR PROMPT SERVICE

Call

**BANNER
LAUNDRY-CLEANER**



PHONE 8-3256

Compliments of

**West Tennessee
Wholesale Tobacco
&
Candy Association**



The big fellow, John (Kayo) Dottley, former Ole Miss fullback sensation, is here with the Chicago Bears today.

**BRITLING'S
CAFETERIA**

"Where A Well Founded Meal
Costs Less"

155 MADISON
5-8577

75 UNION
8-7932

McCAA CHEVROLET CO.

SALES AND SERVICE

WEST MEMPHIS, ARK.

Day Brite Lighting Fixtures

166 Monroe

Phone 5-1631

W. A. Munding

T. F. Dohogne

H. L. GUION CO.

REAL ESTATE AND INSURANCE

72 Madison

Phone 5-1367

H. C. SHARP

AUTOMOTIVE SERVICE

2883 Poplar

Phone 48-8571

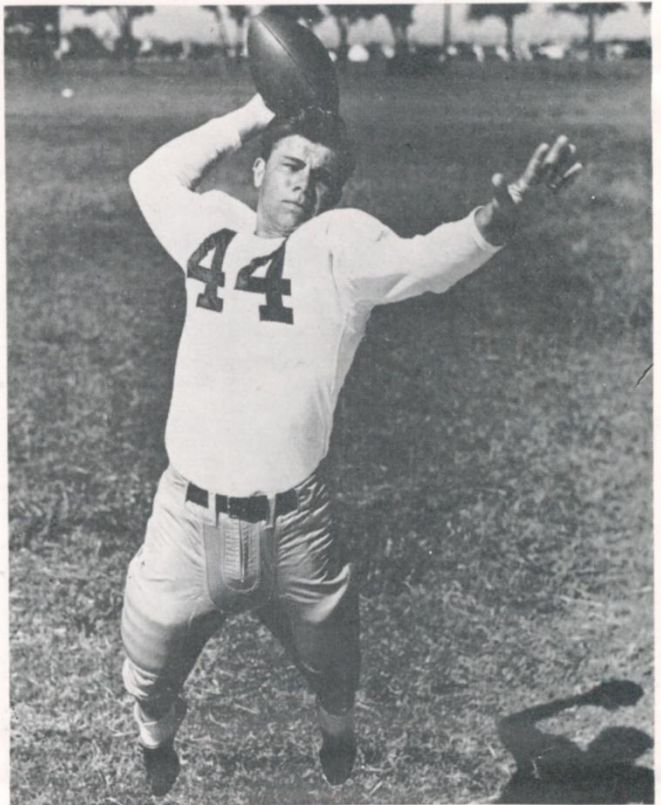
A FRIEND

Time has proven that the
best is the cheapest. Use
Union Labor employed by
Union Contractors.

Electrical Workers Union

No. 474 — AFL

Phone 32-1715



Talk of the pro ranks is Kyle Rote, 1950 brilliant halfback of Southern Methodist University. Now he is beginning his pay-for-play football and will perform for the New York Giants against the Chicago Bears today.

ELLIS-BAGWELL DRUG CO.

•
"THE HOUSE THAT SERVICE BUILT"
•

455 S. Front

Phone 5-3421

Byrnes Plumbing & Heating Co.

New Installations — Repairs

802 S. Cooper

Phones 2-2397—8

EDW. M. FOLEY



108 S. FRONT

BEST WISHES

BURGIE VINEGAR CO.

927 Kentucky

Phone 9-8694

•
ROBILIO LIQUOR STORE

2541 POPLAR AVE.

•
MEMPHIS ELEVATOR CORP.

Established in 1915

Call 8-8376

If No Answer—9-1843

Nights and Sundays—4-3925



They call him "Racehorse"—Harper Davis of the Chicago Bears, former Mississippi State star halfback.

Leader Federal Savings & Loan Association

•
Home Loans — Insured Savings
•

Telephone 37-1554

158 Madison Ave.

Visit Us For

DIAMONDS—
WATCHES—
JEWELRY—

Laguzzi and Barrasso

136½ N. Main Street

MEMPHIS, TENN.

*Gifts for All Occasions
Goes A Long Way
To Make Friends*

**Steepleton General
Tire Company**

Monroe at Fourth

8-2225

Service Is Our Business

See The Madman of Madison

USED CARS

WILSON AUTO SALES

475 Union Ave.

Schneider's Modern Bakery

262 Vance

Phone 8-1186



Compliments of

Lipsey's Fish Co.

FRESH FISH — OYSTERS
SEA FOODS



Beale at Front Phone 8-8511-23



Great end of the Chicago Bears, John Hoffman, who used to shine for Arkansas.

A FRIEND

WURZBURG BROS, INC.

710 S. Fourth St.

Phone 5-1442



Julius Lewis
FOREMOST IN APPAREL
Memphis, Tennessee

1460 UNION

145 SO. UNION

White Battery & Oil Co.

128 S. Fourth St.

Phone 37-4866

Maroon and White Fleet
VETERAN CAB CO.
of Memphis

302 Jackson Ave.

Phone 5-3535



Footballer Charley Conerly, who also is an off-season cotton farmer, received a souvenir from Memphis Cotton Carnival Queen Elinor Turner during the Carnival tourists' visit to Clarksdale, Miss., Conerly's home town, last April.



A FRIEND





TALKING THINGS OVER—New York Giants' Coach Steve Owen and sensational rookie halfback Kyle Rote.



A FRIEND



COMMERCE TITLE BUILDING



*The Most Convenient Location
in Memphis
for Your Office*



Sam W. Moore, Jr., President



Burks-Hall Paint Co.



Harry Pierotti, State Deputy of State of Tennessee, Knights of Columbus, co-sponsor of today's game.



Bob Bostick, chief barker of the Variety Club, Tent No. 20, co-sponsor of today's game.

Service Men Herald KayCees' Hospitality Over the World

Knights of Columbus in Memphis are known throughout the world, for this organization, co-sponsor of today's football classic along with the Variety Club, has been host to thousands of service men over the past few years.

Particularly during World War II, the KayCees and the Catholic Club entertained many soldiers, sailors, Marines and Coast Guardsmen who went to the corners of the earth afterward. Beds were available nightly for 516 service men.

Harry Pierotti, attorney, serves as Grand Knight of the Knights of Columbus and also president of the Catholic Club. Every member of the KayCees automatically becomes a member of the Catholic Club and has use of all facilities offered, swimming pool, shower rooms, handball courts, gymnasium, bowling alleys and other recreation units.

The KayCees do a great deal of charity work, and the New York Giants-Chicago Bears football game comes under the program for those charities.

Variety Club Started First Mothers' Milk Bank in South

Variety Club Tent No. 20 of Memphis began the first Mothers' Milk Bank in the South some years ago at the John Gaston Hospital, and this worthy project has been credited with saving many lives among new-born babies.

Co-sponsor of today's football classic, the Variety Club, an organization of people connected with the entertainment industry, promotes various shows to provide funds for the Mothers' Milk Bank.

Among those appearing under Variety Club auspices in the past has been Roy Acuff, the famed hill-billy singer, and profits from his shows went into the Mothers' Milk Bank.

Some 10 years ago, Tent No. 20 joined with other Variety Clubs in defraying the expenses of 24 trained nurses from all over the nation to go to Minneapolis and learn Sister Kenny's methods of treating polio patients. The nurses then returned to their homes and taught others.

The Variety Club here also adopted a European war orphaned child in its program of benevolence.

Clubrooms are located in the Hotel Gayoso. Bob Bostick is chief barker of the Variety Club Tent No. 20.

MORE LISTENERS

Than Any Other Station Daytime

"YOUR GOODWILL STATION"
WDIA
 73 On Your Radio

(C. E. Hooper Audience Reports, Jan. 1950-June 1951)

Men of the Chicago Bears

- AURILIO, ALEX STEPHEN** . . . Tackle 6:2, 230, born in Girard, Ohio, Dec. 26, 1926. Newcomer from John Carroll University (Cleveland), All-Ohio 1953. Served with Army.
- BARWEGEN, RICHARD (DICK)** . . . Guard 6:1, 230, born in Chicago, Dec. 25, 1921. Second season with Bears. Acquired in trade with Baltimore. All-NFL 1950; all-AAC 1948-49. Captained Fenger High School and earned all-state honors. Enrolled at Purdue 1941. Made all-Conference, all-Western and all-American. Purdue captain and most valuable player. Served 28 months with Air Forces in World War II. Married and has two children. Lives in Baltimore.
- BLANDA, GEORGE (THE TOE)** . . . Fullback 6:2, 197, born in Youngwood, Pa., Sept. 17, 1927. Third season with Bears. One of football's greatest kickers. His educated toe was deciding factor in second Detroit game last fall. Outstanding kickoff man and place kicker. Kicked six field goals in 1950. Joined Bears direct from University of Kentucky. Starred in North-South game. Married and lives in Richmond, Ky.
- BOONE, J. R. (JUNIOR)** . . . Halfback 5:8½, 163, born in Tulsa, Okla., July 28, 1925. Third season with Bears. Product of Tulsa University. Does not have a first name. Exceptional pass receiver and spot runner. Fair baseball player. Married and has three children. Lives in Chicago.
- BRADLEY, ED (STONEAGE)** . . . Guard 6, 215, born in Stratford, Conn., Sept. 16, 1926. Member of squad in early part of '50 season. Performed at end but has been shifted to middle of line. Earned all-Southern honors at Wake Forest. Weight lifter and strong man.
- BRAY, RAY (MUSCLES)** . . . Guard 6, 235, born in Caspian, Mich., Feb. 1, 1917. Tenth season with Bears. Bray and Sammy Baugh are the only players who have been in the NFL since 1939. All-league 1949; second team 1947-48-50. Member of three world championship Bear teams. Little all-American at Western Michigan State College, Kalamazoo. Known as one of the Strong Men of professional football. Served with Navy, World War II.
- BUTLER, CHARLES EDWARD** . . . End 6:3, 205, born in Wayland, Mass., Aug. 17, 1925. Newcomer to squad. Starred for George Washington University and was one of top pass receivers in East. Rated highly by Bob Margarita, former Bear halfback. Served with Air Force in World War II.
- CATERINA, GENE** . . . Halfback 5:9, 160, born in Vineland, Pa., Aug. 5, 1928. Rookie from Temple University. Scored 72 points (12 touchdowns in 1950).
- CAMPANA, AL** . . . Halfback 5:11, 180, born in Youngstown, Ohio, Feb. 26, 1926. Second year man. Little all-American from Youngstown College in Ohio. Starred in first game with Cardinals, gaining 78 yards. Fine runner, pass receiver and defensive back. Married and lives in Youngstown.
- CLARKSON, STUART (STU)** . . . Center 6:2, 225, born in Corpus Christi, Tex., July 4, 1919. Seventh season with Bears. Served With Army in World War II. Product of Texas A. & I. College but has taken advanced work at Corpus Christi U. Married and lives in Corpus Christi, Tex.
- CODY, ED (CATFOOT)** . . . Linebacker 5:10, 190, born in Newington, Conn., Feb. 27, 1924. Third season as Bear. Formerly with Green Bay. All-Big Ten fullback at Purdue. One of best defensive players in pro ball. Single.
- CONNOR, GEORGE (MOOSE)** . . . Tackle 6:3, 240, born in Chicago, Jan. 21, 1925. Fourth season with Bears. All-league tackle 1950. One of most versatile linemen in football. Played tackle-linebacker and end. De La Salle product. All-American at Holy Cross as freshman, starring in great upset over Holy Cross 1942. Entered Notre Dame after serving with Navy and captained Irish to two undefeated seasons, 1946-47, making the all-American both years.
- COWAN, LESLIE L. (LES)** . . . End 6:5, 235, born in Stamford, Texas, Dec. 24, 1925. Newcomer from McMurtry College. Plays both end and tackle. Caught ten touchdown passes in final season and starred as kickoff man. Served Navy in World War II. Married and resides in Hamlin, Tex.
- DAVIS, FRED** . . . Tackle 6:3, 245, born in Louisville, Ky., Feb. 15, 1919. Sixth season as Bear. One of pro football's top linemen ever since joining club. All-League tackle three times; twice second team. Acquired from Los Angeles Rams in trade for Tom Harmon. Played with Washington Redskins, 1942 and 1945. All-Southeastern at University of Alabama 1941. All-service at March Field with Air Force 1943-44. Married and father of two children. Lives in Louisville.
- DAVIS, HARPER (JUNIE-RACEHORSE)** . . . Halfback 5:11, 172, born in Clarksdale, Miss., Dec. 11, 1925. Second season with Bears. Graduate of Mississippi State College. All-Southeastern. Played in all-American Conference with Los Angeles Dons one season. Starred in Service as member St. Mary's Pre-flight eleven. Married and lives in Starkville, Miss.
- DEMPSEY, FRANKLIN (FRANK)** . . . Guard, 6:3, 230, born in Miami, Fla., May 27, 1925. Second season with club. Shifted from tackle to offensive guard and defensive end. Has competed in boxing. Single and lives in Miami.
- DOTTLEY, JOHN (KAYO)** . . . Fullback 6:1, 200, born in McGehee, Ark., Aug. 25, 1928. Rookie from University Mississippi. All-Southeastern 1949-1950. Collegiate ground gaining champion 1949 with 1,312 yards (third highest in history). Gained 1,007 yards 1950. Called greatest running back ever to play in South by General Boy Neyland (Tennessee) and other coaches. Arkansas schoolboy star. Member South team in Senior Bowl game. Married, has baby daughter and lives in Vicksburg, Miss.
- FALKENBURK, HERB** . . . Fullback 6:3, 215, born in Kingsville, Texas, Nov. 11, 1928. Rookie from Trinity University of Texas. One of top running backs in Texas 1950. Won Kansas Relays decathlon, Texas Relays 400 meter hurdles, and placed seventh in National AAU decathlon 1951. Single and lives in Kingsville, Tex.
- GULYANIS, GEORGE (LITTLE BRONKO)** . . . Halfback 5:11½, 198, born in Mishawaka, Ind., June 11, 1921. Fifth year with Bears. Team's leading ground gainer last fall with 571 yards. Bears' best ball carrier also 1948-1949. Topped NFL punters 1949. Product of Bears "farm system"; played at Akron, O., 1946. Attended Ellisville Junior College in Mississippi, but actually never played collegiate football.
- GURUNIAN, KRON ARAM** . . . Halfback 6, 190, born in Chicago, July 11, 1927. Newcomer from Carthage College in Illinois. Armenian All-American 1949. Plays all backfield positions and is triple threat. Single and lives in Chicago.
- HALL, SIDNEY (SID)** . . . Guard 6, 215, born in Maricopa, Calif., Jan. 31, 1926. Rookie from College of Pacific. One of leading line backers on Pacific Coast 1950. Also plays guard. Served with Navy in World War II.
- HANSEN, WAYNE** . . . Center 6:2½, 232, born in Monahans, Texas, Oct. 6, 1928. Second season with Bears. All-Border Conference center at Texas Western. Shifted to guard last fall. Displayed great promise. Exceptionally fast. One of youngest players in pro football. Married, father of one child and lives in Monahans, Tex.
- HAYS, JAMES RICHARD (JIM)** . . . Halfback 5:11, 175, born in Toledo, Ohio, Jan. 14, 1930. Toledo University newcomer. Specializes in pass defense. Recommended by Bob Snyder, former Bear quarterback.
- HOVER, ALLEN** . . . Guard 6:1, 230, born in Hamilton, Ohio, March 3, 1929. Newcomer from Louisiana State University. All-Southeastern 1949.
- HUNSINGER, CHARLEY (CHUCK)** . . . Halfback 6, 188, born in Harrisburg, Ill., July 25, 1925. Second year man. Handicapped by minor injuries last fall but starred in Detroit and New York games. Among NFL leaders in kickoff returns. All-state in high school; starred in football, basketball and track. Played on Jacksonville (Fla.) Navy team with Ray Bray and John O'Quinn 1943. All-Southeastern at University of Florida 1948-1949. Married, has two children and lives in Harrisburg.
- KAVANAUGH, KEN** . . . End 6:3, 207, born in Little Rock, Ark., Nov. 23, 1916. Ninth Year Man. Second highest scorer in Bears' history, 331 points. Third all-time leader National Football League total touchdowns, 55. Has caught three touchdown passes in one game three times. One of football's greatest offensive ends. All-league three times.
- KEANE, JIM** . . . End 6:4, 215, born in Bellaire, Ohio, Jan. 11, 1924. With Bears six seasons. Club's leading pass receiver 1950. Near top in league in receptions each season. Married and father of twins. Lives in Chicago.
- KINDT, DON** . . . Fullback 6:1, 208, born in Milwaukee, Wis., July 2, 1925. Fifth year as Bear. Played chiefly on defense last fall. Married and makes home in Milwaukee.
- LTIPLER, ROBERT A. (BOB)** . . . Tackle 6:2, 235, born in Buffalo, N. Y., Nov. 30, 1926. Rookie from Buffalo University.
- LISAK, EDWARD** . . . Halfback 6, 200, born in Kalamazoo, Mich., April 11, 1927. Newcomer, who starred both on offense and defense for University of Oklahoma last fall. Navy veteran. Married and lives in Kalamazoo, Mich.
- LUJACK, JOHN C. (JOHNNY)** . . . Quarterback 6, 187, born in Connelville, Pa., Jan. 4, 1925. Fourth season with Bears. All-league quarterback 1950. Finished second in loop scoring with 109 points. Led NFL in touchdowns, 11. Gained 397 yards and had highest ground gaining average last fall. Has been Bears' leading scorer since joining team in 1948. Three year total 216 points. Topped league passers 1949.
- LEA, PAUL** . . . Tackle 6:2½, 240, born in New Orleans, La., Feb. 10, 1929. Newcomer from Tulane University. A medical student who aspires to join Bears' elite group of Doctors. All-Southeastern 1948-1949. Member South squad in Senior Bowl game. Married and makes home in New Orleans.
- MCHUGH, THOMAS L. (TOM)** . . . Guard 6:1, 225, born in Phoenixville, Pa., April 28, 1926. Rookie from University of Maryland. Army veteran. Married and father of one child. Lives in Phoenixville, Pa.
- MILLER, JOHN H. (JOHNNY)** . . . Halfback 5:10½, 180 pounds, born in Chicago, Feb. 9, 1928. Newcomer from Northwestern University. Product of Schurz High.
- MONDATTI, PETER (PETE)** . . . Fullback 5:11, 200, born in Peckville, Pa., Feb. 1, 1927. Rookie from Scranton University. Rated outstanding blocker and ball carrier. Army veteran.
- MORRISON, FRED (CURLEY)** . . . Fullback 6:2, 220, born in Columbus, Ohio, Oct. 7, 1926. Second Year Man. Topped NFL with 43.3 punting mark 1950. Showed ability as ball carrier. Starred in Ohio State's Rose Bowl triumph 1950.
- O'QUINN, JOHN (RED)** . . . End 6:2, 192, born in Asheboro, N. C., Sept. 7, 1925. With Bears two seasons. Played defensive halfback last fall. Product of Wake Forest College and led nation's pass receivers in 1948 with 64 receptions, 910 yards and 10 touchdowns. Caught 22 touchdown passes in college.
- POLANSKE, WALTER** . . . Halfback 6:1½, 200, born in Lodi, California, March 11, 1928. Rookie from College of Pacific. Team's most valuable player 1950. Defensive specialist.
- ROBERTS, WILLIAM (BILL)** . . . Fullback 6, 195, born in Dubuque, Iowa, Sept. 11, 1929. Newcomer from Dartmouth. All-Eastern 1950. Leading Ivy League ground gainer.
- ROGERS, BUDDY** . . . Halfback 6:1½, 195, born in Lake Village, Ark., June 13, 1927. Rookie from University of Arkansas. Member North team in Senior Bowl game. Arkansas' leading ground gainer 1950. Quarter miler on track squad. Marine veteran.
- ROMANIK, STEVE** . . . Quarterback 6:1, 190, born in Millville, N. J., May 27, 1924. Second season as Bear. Fine passer, signal caller and ball handler. Good defensive back. Married and lives in Millville.
- HOFFMAN, JOHN (BIG JOHN)** . . . Fullback 6:2, 218, born in Little Rock, Ark., Dec. 8, 1925. Third season as Bear. One of the finest all around players in the National Football League. Standout runner, pass receiver, blocker and defensive back. All state in high school.
- ROWLAND, BRAD** . . . Halfback 6:1, 195, born in Hamlin, Texas, July 14, 1929. Rookie from McMurtry College, Abilene, Tex. Rated one of best players developed in state of Texas in years. Starred in East-West game. Gained 1,008 yards in 1950 and 1,724 in '49. In four seasons of college play gained more than three miles in total offense.
- RYKOVICH, JULES A. (JULIE)** . . . Halfback 6:1, 205, born in Gary, Ind., April 6, 1923. Third season as Bear. Dependable back, good runner, receiver and blocker. Two years in All-America Conference.
- SCHROEDER, GENE (FLASH)** . . . End 6:3, 192, born in Washington, D. C., March 3, 1929. Newcomer from University of Virginia. All-Southern Conference 1950 and star of Blue-Gray game.
- SERINI, WASHINGTON (WASH.)** . . . Guard 6:2, 235, born in Tackahoe, N. Y., March 9, 1922. Fourth year as Bear. Earned all-Southeastern honors at University of Kentucky as tackle.
- SHERILL, JAMES W. (J. W. or BUD)** . . . Halfback 6:1½, 191, born in Tulsa, Okla., Jan. 8, 1929.

CHICAGO BEARS' ROSTER

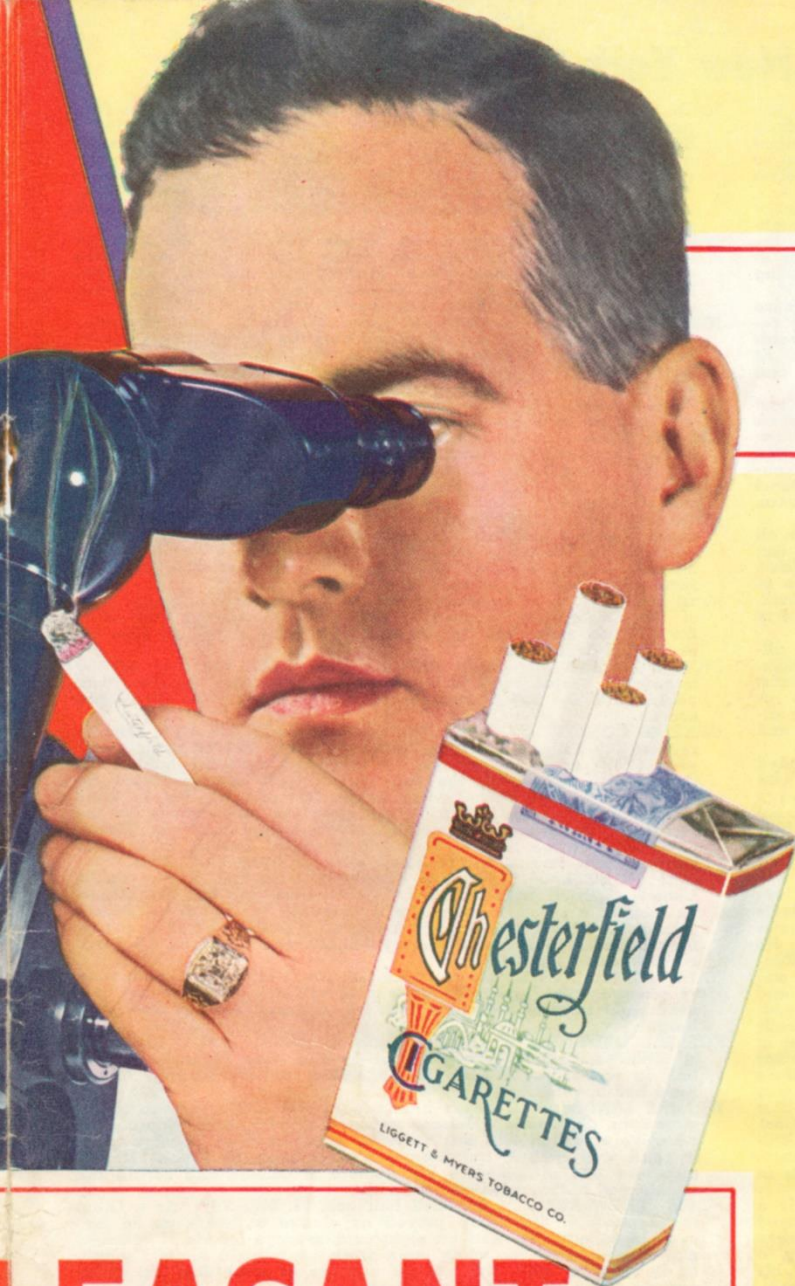
5—Stone	B	25	6'	188
6—Kindt	B	26	6'1	208
7—Sprinkle	E	28	6'1	207
9—Williams	B	21	6'2	198
10—Campana	B	25	5'11	180
11—Rykovich	B	28	6'1	205
12—Romanik	B	27	6'1	190
14—Hansen	G	24	6'2	230
15—Morrison	B	24	6'2	220
16—Cody	B	27	5'10	190
19—H. Davis	B	25	5'11	172
20—Keane	E	27	6'4	215
22—Blanda	B	23	6'2	204
23—Serini	G	29	6'2	235
24—F. Davis	T	32	6'3	245
26—Barwegen	G	29	6'1	228
29—Hoffman	E	25	6'2	218
31—Clarkson	C	32	6'2	225
32—Lujack	B	26	6'	187
33—White	B	22	5'9	172
34—Dottley	B	23	6'1	200
35—Stenn	T	31	6'2	245
37—O'Quinn	E	26	6'2	192
38—Bradley	G	26	6'	215
39—Gulyanics	B	30	5'11	203
40—Dempsey	G	26	6'3	230
43—Rogers	B	24	6'2	195
46—Hunsinger	B	26	6'	188
47—Miller	B	23	5'11	180
48—Wright	B	27	6'2	200
50—Lea	T	22	6'3	240
51—Kavanaugh	E	34	6'3	207
53—Wightkin	E	24	6'3	238
55—Moser	C	23	6'3	240
57—Boone	B	26	5'9	163
65—Lazetich	G	23	6'1	210
66—Turner	C	31	6'2	235
68—Stoutberg	G	23	6'2	228
81—Connor	T	26	6'3	240
82—Bray	9	34	6'	235
86—Rowland	B	21	6'1	190
88—Schroeder	E	22	6'3	192
89—Cowan	T	23	6'5	235

**SCIENCE
DISCOVERED IT
YOU CAN
PROVE IT-**

**"NO UNPL
AFTER-**

CHESTER

**MORE COLLEGE MEN
CHESTERFIELD THAN AN**



**PLEASANT
TASTE"**
U SMOKE
ERFIELD

**AND WOMEN BUY
ANY OTHER CIGARETTE**

Copyright 1951, Liggett & Myers Tobacco Co.

NEW YORK GIANTS ROSTER

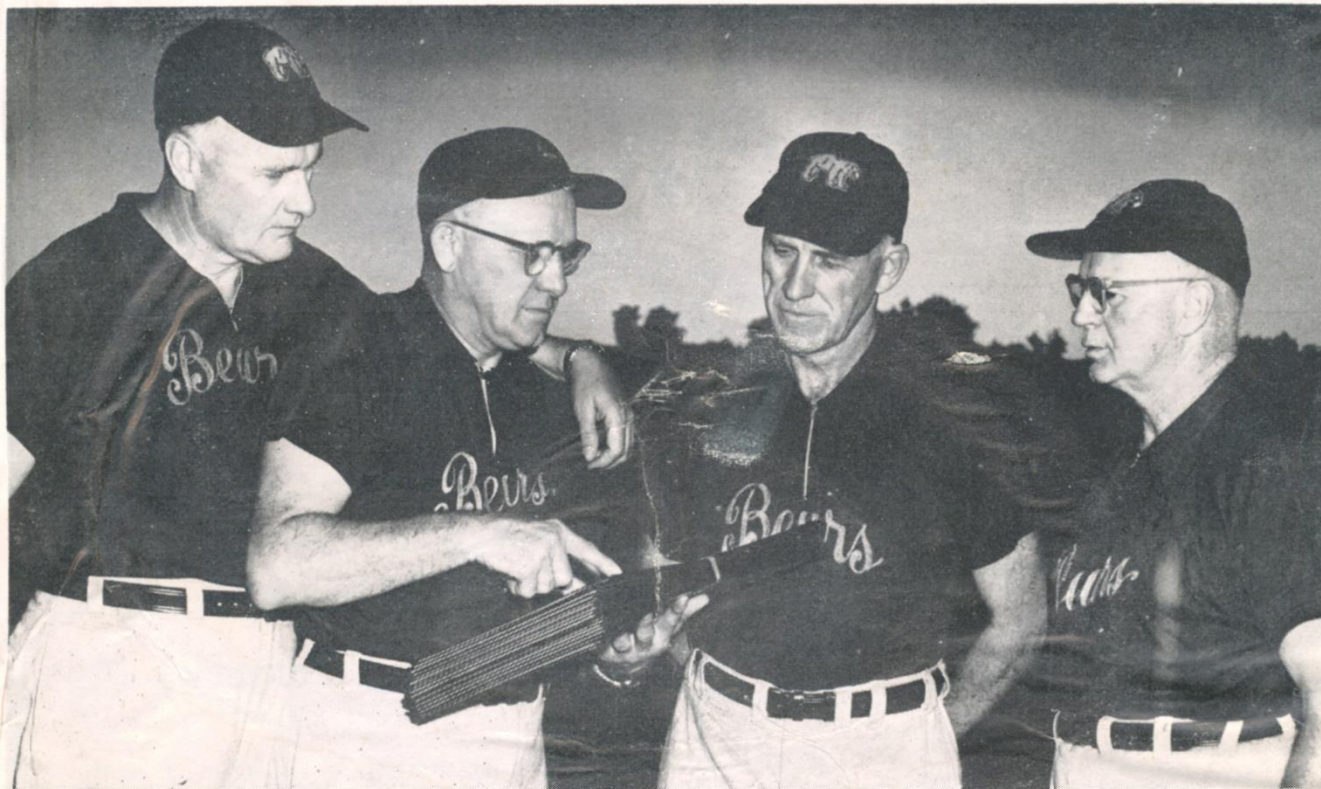
12—Amberg	B	22	5'11	195
16—Ostendarp	B	26	5'8	178
20—Tidwell	B	26	5'10	185
21—Sulaitis	G	30	6'2	215
22—Rowe	B	28	6'	182
30—Scott	B	25	6'1	195
31—Price	B	26	5'11	190
34—Jackson	B	26	5'11	210
40—Landry	B	26	6'1	195
41—Griffith	B	22	5'11	190
42—Conerly	B	27	6'1	185
44—Rote	B	23	6'	195
45—Tunnell	B	26	6'1	185
51—Woodard	C	25	6'2	225
52—Cannady	C	27	6'2	225
53—Rapacz	C	26	6'4	260
60—Baker	G	28	6'2	215
61—Biltz	G	24	6'	210
62—Murray	G	25	6'2	240
65—Barzilauskas	G	30	6'1	230
67—Soboleski	G	25	6'	215
70—Krouse	T	24	6'3	250
73—Weinmeister	T	28	6'4	235
75—Albright	T	22	6'1	232
76—Stribling	E	24	6'1	205
77—Hannah	T	29	6'3	220
78—DeRogatis	T	24	6'4	240
79—Coulter	T	26	6'5	260
80—Mote	E	28	6'2	190
82—Poole	E	29	6'3	215
83—Schnellbacher	B	28	6'2	190
84—Hubbard	E	23	6'2	205
85—Pfeifer	E	23	6'1	200
86—Duncan	E	25	6'2	205
87—Wilkinson	E	24	6'3	215
88—McChesney	E	24	6'2	190
89—Hudson	E	21	6'4	215

Officials for Today's Game

REFEREE—Ronald Gibbs (St. Thomas).
 UMPIRE—Carl H. Brubaker (Ohio Wesleyan).
 HEAD LINESMAN—Dan Tehan (Xavier).
 BACK JUDGE—Robert C. Austin (St. Ambrose).
 FIELD JUDGE—William F. McHugh (DePaul).

Men of the New York Giants

- JIM DUNCAN** . . . Wake Forest end, 25, 205, 6'2". Duncan was one of the redoubtable defensive ends who wrecked enemy formations in 1950 and he's cast for the same role this year. Jim was drafted by both the Chicago Bears and the Cleveland Browns before he came to the Giants. He was a 50 minute player at Wake Forest in 1950 despite the two-plateau system there.
- CHARLES HUBBARD** . . . Morris-Harvey end, 23, 205, 6'2". Here is the star receiver of unbeaten Morris-Harvey last year. Hubbard caught 23 passes for an average of 25 yards and 10 touchdowns in the season and accounted for three touchdowns on four receptions in the Tangerine Bowl victory. He competed in basketball and hurdling as well as football.
- BOB HUDSON** . . . Clemson end, 21, 215, 6'4". Bob played offense and defense for Clemson, Orange Bowl winner and was key receiver of a team which used the pass sparingly. Frank Howard, Clemson coach tabs him an outstanding professional prospect. At track, Hudson ran the 100 and 220 and was a shot putter and discus thrower.
- BOB MCCHESENEY** . . . Hardin-Simmons end, 24, 190, 6'2". In the last half of the 1950 campaign McCheesney shook his rookie greenness, and became a star receiver. He caught 19 passes for six touchdowns. His average gain of 20 yards was extraordinary. Bob was third draft choice of the Philadelphia Eagles for 1950, and was obtained from that club in a trade. McCheesney played in five bowl games at college, and gained 800 yards and scored 13 touchdowns in his final year.
- KELLY MOTE** . . . Duke end, 28, 190, 6'2". Versatile, That's Mote all over! He is the invaluable utility man of the end squad, who can play either wing, on offense or defense. He came to the Giants last season in a trade with Detroit. In 1946, he was rated one of the South's greatest flankers, was All-Southern and Duke captain, and helped the South whip the North. He has a master's degree in physical education.
- ALAN PFEIFER** . . . Fordham end, 23, 200, 6'1". Ed Danowski, all-time Giant passer, and now coach at his alma mater, Fordham, stated Pfeifer had the best chance of any of the rugged 1950 Rams to star in professional ball. Alan is one of the leading college receivers of all time with 95 receptions in three years. He made almost every All-East team, played in the North South game, and was named to the Chicago All-Star squad.
- RAY POOLE** . . . Mississippi end, 29, 215, 6'3". Brother Jim founded the Poole tradition at end for the Giants and Ray carries on with all of the family's accustomed class. Ray's speed, size and savvy made him likely the most devastating defensive wingman in the league last year. Poole did not appear on attack in 1950, but he's always available. Two years ago, he gained 277 yards on 25 passes thrown by his old college chum and teammate at Ole Miss, Chuck Conerly.
- BILL STRIBLING** . . . Mississippi end, 23, 207, 6'2". The "Bill" in Stribling's name is something he picked up. His proper handle is Majure Blanks. The Giants were so impressed with Bill as a junior that they drafted him after the 1949 season for 1951 delivery. He was one of the consistently excellent ends of the Southeastern Conference. Stribling matriculated in 1945 and was regular left end as a freshman. He spent the next two seasons in the Army, and returned to Mississippi to resume his football career at right end.
- BOB WILKINSON** . . . UCLA end, 24, 215, 6'3". Steve Owen calls Wilkinson the top-passing end prospect the Giants have signed in years. In fact, Owen believes that Wilkinson and other prize rookies noted above, will fill out the best squad the club has had since 1941. Wilkinson was All-Pacific Coast the past two years. He was nominated for the East-West, Senior Bowl, and Chicago All-Star games. In 1949, he set a new reception record for the Coast Conference. Last season, when UCLA did not have a star passer, Wilkinson played an average of 50 minutes on offense and defense. He played basketball. He was officially timed for the 100 yards in 9.9 seconds.
- WILLIAM ALBRIGHT** . . . Wisconsin tackle, 22, 232, 6'1". Here is a chap who lives football. He is fast, rough and durable, and played an average of 50 minutes per game last season. He spent six weeks in training at a Marine platoon leader school before reporting to camp. Bill was all-city and all-state high school choice in his native Racine, Wisc. He was a shotputter of note at Wisconsin. Red Smith, former Giant assistant coach, recommended Albright.
- AL DE ROGATIC** . . . Duke tackle, 24, 240, 6'4". The Giants can claim as dauntless and as talented a pair of tackles as the league possesses in De Rogatis and Arnie Weinmeister. At Duke, Al was an All-Southern selection and was on the first All-American chosen in a national players' pool. He was an outstanding star in the East-West game in San Francisco, and more than fulfilled collegiate promise in two years as a professional.
- HERB HANNAH** . . . Alabama tackle, 29, 220, 6'3". There was no football in Hannah's life until he finished a five-year tour in the Naval Air Force and matriculated at Alabama. He was however, a natural for the sport, and was heralded last season as the best blocker and downfield man in the Southeastern Conference.
- RAY KROUSE** . . . Maryland tackle, 24, 250, 6'3". The No. 2 Giant draft pick began collecting "all" honors as a sophomore, and attained national stature in his senior year. Andy Gustafson, Coach of Miami, commented last Fall: "Our fellows couldn't move Krouse at all."
- ARNIE WEINMEISTER** . . . Washington tackle, 28, 235, 6'4". In Weinmeister the Giants have one of the most colorful and accomplished tackles of their history. Arnie is one of the few line players who can captivate the fans the way a runner or passer does. His tremendous speed, and his intuition on a play, much in the Mel Hein manner, make him a marked man on the field.
- JON BAKER** . . . California guard, 28, 215, 6'2". Giant fans say Baker reminds them of Bill Edwards of Baylor, star guard on the great young team of 1941 which broke up to go to war. Baker, agile and prescient, is a terror up the middle on defense.
- FRITZ BARZILAIUSKAS** . . . Yale guard, 30, 230, 6'1". The Giants coaching star took a liking to the crisp, fast-starting, hard-hitting offensive work of Barzilauskas for the Boston Yanks, and obtained his service for the 1950 season. Fritz, however had retired a year to organize his new auto agency in Waterbury, Conn. He returns this season as a key blocker on the attack. He was All-America tackle at Yale, and shifted to guard soon after the Yanks drafted him No. 1 for the 1947 season.
- JOHN WILLIAM BILTZ** . . . Ohio State guard, 24, 210, 6'. This fast, hard-hitting offensive guard, obtained from Detroit in the trade for Bill Swiacki, aided Ohio State to the 17-14 Rose Bowl win in '49 over California, and took part in the East's 7-6 Shrine Game decision over the West in '50. Biltz, of Rumanian descent, was a two-letter winner as a Buckeye, and won all-Big Ten, all-Mid West, and second All-American honors. He was a freshman fullback before shifting to guard.
- EARL MURRAY** . . . Purdue guard, 25, 240, 6'2". When the Baltimore Colts disbanded in January, the Giants nabbed their outstanding offensive and defensive guard, Murray. Stu Holcomb also used Earl with or without the ball at Purdue, although the two-plateau system was in effect there in Murray's senior year, 1949.
- JOSEPH SOBOLESKI** . . . Michigan guard, 25, 215, 6'. Here is another winning Rose Bowl guard who came from the Lions for Bill Swiacki. Soboleski was a four-letter winner at Michigan. He was offensive tackle under Fritz Crisler for the Rose Bowl campaign of '47 and shifted to tackle the following season under Bennie Oosterbaan. Soboleski appeared in seven games with the Washington Redskins last fall before being traded to Detroit.
- JOE SALUATIS** . . . Dickinson H.S. guard, 30, 215, 6'2". Rare indeed is the chap who can jump from High School football into the pros, but this former Jersey City, N. J., athlete did it and made it stick—for eight years. He is the "dean" of the squad, and the most versatile player.
- JOHN CANNADY** . . . Indiana center, 27, 225, 6'2". Ask Marion Motley about Cannady! John's job was to stop the Cleveland fullback who led the league in rushing. For three games Motley gained a meager total of 86 yards. Cannady is a linebacker who will stand favorable comparison with any in the league.
- JOHN RAPACZ** . . . Oklahoma center, 26, 260, 6'4". This former titan of the All-American Conference joined the Giants for 1950, after Steve Owen made him No. 1 pick in the draft of players from the disbanded rival circuit.
- DICK WOODARD** . . . Iowa center, 25, 225, 6'2". Rounding out the formidable center corps is this former star of the Big Ten, who played with the Los Angeles Dons before coming to the Giants last season.
- CHARLES CONERLY** . . . Mississippi quarterback, 27, 185, 6'1". Conerly rewrote the nation's collegiate forward passing records in his senior year (1947) at Ole Miss, and he has maintained the habit as a professional. He holds the National Football League record for most passes completed in one game, 36, and he has in three years, surpassed the marks of his illustrious predecessors on the Giants. Charley was All-American at Mississippi and was Rookie-of-the-Year in the NFL in 1948. Off the field, Conerly is a rising young cotton farmer in his home town of Clarksdale, Miss.
- TRAVIS TIDWELL** . . . Auburn quarterback, 26, 185, 5'10". Unlike Conerly, Tidwell came up as a T quarterback, but just like Chuck, he learned a second system, the A formation so that in his second season as a professional he is a master of both. Tidwell is a running threat as well as a passing menace and averaged 4.5 yards on 29 attempts last fall.
- JOHN AMBERG** . . . Kansas halfback, 22, 195, 5'11". The Giants were so pleased with Forrest Griffith, rookie halfback last year that they went right back to Kansas to pick his successor on that team, Amberg.
- FORREST GRIFFITH** . . . Kansas halfback, 22, 190, 5'11". Right half is Griffith's "official" position but he can play fullback and left half in the T too. Forrest is the niftiest cutback star the Giants have had in years.
- THOMAS LANDRY** . . . Texas halfback, 26, 195, 6'1". As one of the marvelous "umbrella" defense quartet, Landry saw virtually no offensive action in 1950 but he is an attacking agent of high quality and was both T quarterback and fullback at Texas. Landry also was one of football's top punters in college and served the Giants well in that role, with 58 kicks.
- JAMES OSTENDARP** . . . Bucknell halfback, 26, 178, 5'8". As a Giant rookie in 1950, Ostendarp proved as elusive a runner as he had been in college. He had an eight-yard average for his 18 attempts and is scheduled for much more work as a professional "soph". At Bucknell in 1949, Jim had an average of more than 100 yards per game and scored two touchdowns.
- KYLE ROTE** . . . Southern Methodist halfback, 23, 195, 9". The "Mighty Mustang" is one of the most famous and most publicized college players of all times. He was desired by all clubs of the NFL but the Giants had the luck to draw him in the bonus pick. Rote was the most valuable player at Thomas Jefferson H. S. in San Antonio in 1946 and has been showered with honors ever since. His most celebrated stand was against Notre Dame in the Cotton Bowl in the final game of 1949 when his spirited and spectacular drive for three touchdowns failed by one point to gain a tie and by two of snapping the four year Irish unbeaten streak.
- HARMON ROWE** . . . San Francisco halfback, 28, 182, 6'. Rowe is another of the celebrated halfbacks of the Giants "umbrella" defense. He has, however, also demonstrated high quality as an offensive back in the T at Baylor in 1941 and at the U. of San Francisco after the war when he was mustered out of the Navy.
- OTTO SCHNELBACHER** . . . Kansas halfback, 28, 185, 6'2". This former star end who became known as "The Claw" for his pass defense finesse at halfback in the All-American Conference is one of the four "umbrella" specialists of the Giants. Last season, Otto intercepted nine passes for 93 yards.
- JOSEPH SCOTT** . . . San Francisco halfback, 25, 195, 6'1". Speed, strength, and a smooth change of pace make Scott a dangerous long-gaining back rushing, receiving, or on runback of kicks. Last season he averaged 4.5 yards on 72 rushes, caught nine passes for a 26.7 average, toted on punt back 23 yards, and 14 kickoffs for an average of 25.1 yards.
- EMLEN TUNNELL** . . . Iowa halfback, 26, 183, 6'1". This great defensive back was the whole show at safety for the Giants in 1949. He returned two interceptions and one punt for touchdowns. He stole 10 enemy aeriels for an average runback of 25 yards. He ran back 26 punts 315 yards.
- EDDIE PRICE** . . . Tulane fullback, 26, 190, 5'11". All-Southeastern Conference, All Southern, and finally, All American honors came to Price for his sensational ground gaining with the Green Wave and he upheld his reputation by ranking fourth in the NFL last season as a rookie with 703 yards and 5.6 average.



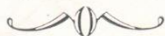
Guiding hands of the Chicago Bears—the coaching staff, left to right: Luke Johnsos, George Halas, Clark Shaughnessy, Paddy Driscoll.

GRISANTI ON MAIN

OPPOSITE CENTRAL STATION

38-9825

PLENTY OF PARKING SPACE



40 YEARS ON MAIN STREET

ITALIAN FOOD REPAIRED THE TOSCANA METHOD

Willie Grisanti, Prop.

Hoover Motor Express

325 East Calhoun

Dealers Transport Co.

• • •

1368 Riverside Blvd.

E. J. LIQUOR STORE

197 Jackson

8-8631

SEE BOSWELL HALE
(Former Memphis Grid Great)
FOR YOUR

DeSoto - Plymouth
AUTOMOBILE SALES CO.

38-1381

Patterson Transfer Company

Since 1856

Charles Liberto & Co.

WHOLESALE
FRUITS AND VEGETABLES

132 E. Webster

Phone 5-5581

Champions Also
G M C
1/2 to 20 tonners
Gasoline & Diesel

GMC Truck and Coach Division

General Motors Corporation

Memphis, Tennessee

Chandler & Chandler

Realtors, Developers and Builders

Porter Bldg.

Phone 8-8980

Weymouth Construction Company

GRAVEL DIVISION

WASHED SAND AND GRAVEL

Phone 48-1377

Compliments of

STRAND THEATRE

Compliments of

Commonwealth Amusement Corp.

Kansas City Missouri

SIENA COLLEGE

Regular Day Classes — Adult Evening Classes

370 S. Orleans

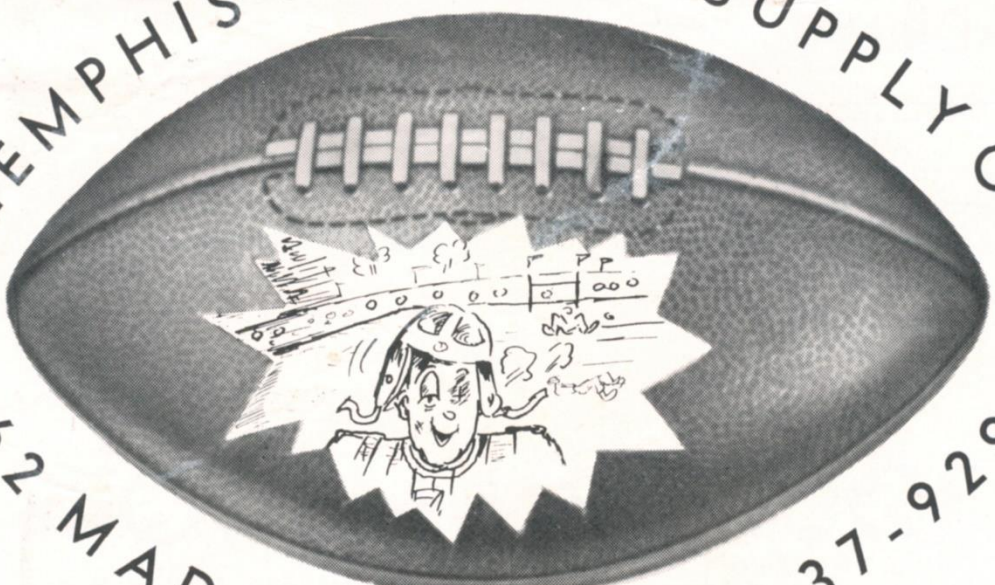
Phone 37-1401

SOUTHERN

LAMINATING CO.

Manufacturers of Plywood

MEMPHIS, TENN.



MEMPHIS ATHLETIC SUPPLY CO.
162 MADISON PHONE 37-9290



George Connor, tackle of the Chicago Bears, is a former Notre Dame All-American.

Firestone Products

Shell Products

SARTAIN'S SUPER SERVICE

845 S. Third at E. H. Crump Blvd.

"24-HOUR ROAD SERVICE"

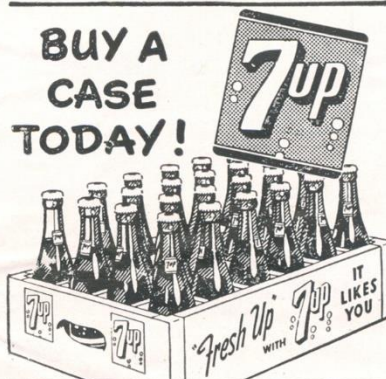
Washing and Lubrication Anytime, Day or Night

Phones—9-9365 — 39-2824

HALL SUPPLY CO.

414 S. Main St.

Phone 5-4773



OLDSMOBILE CADILLAC

— Sales and Service —



SOUTHERN MOTORS

Inc.

341 Union Avenue

Phone 8-8208

Memphis Hardwood
Flooring Co.

• • •

1591 Thomas St.

Compliments of

Lawson - Cavette

SPORTING GOODS CO.

Complete Athletic Outfitters

"It Pays to Play"

South's Largest Trophy Dealer

9 No. Third • Memphis

Headquarters for Advance Prep
School Tickets

Layne & Bowler, Inc.

Vertical Turbine Pumps

Chelsea & University

MEMPHIS, TENNESSEE

Anderson-Tully
Co.

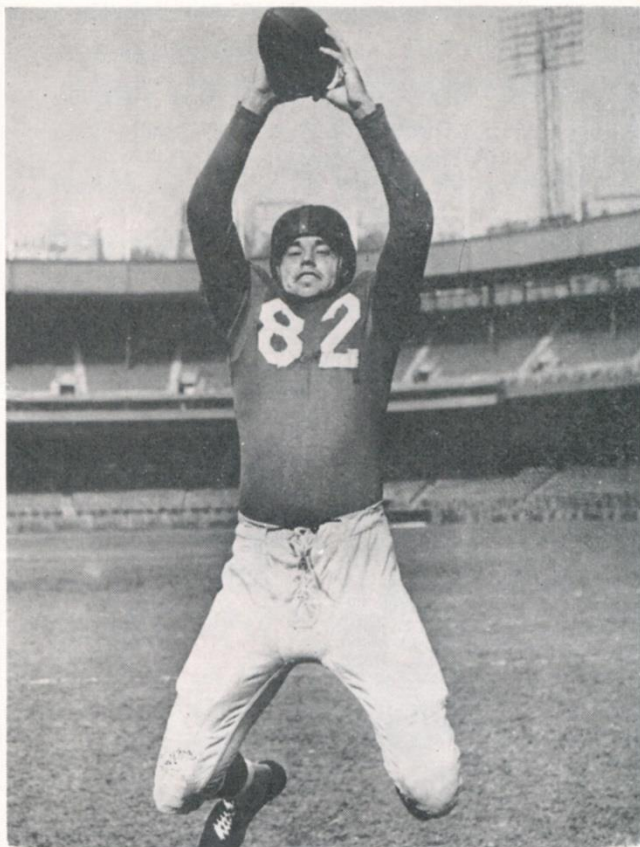
Hyde Park Mills, Inc.

Covington, Tenn.

Manufacturers of Cotton Yarns

BRAND NAMES
REELFOOT — TIPTON
Natural and Dyed
Single and Plied
Sizes — 1's to 14's

J. A. Conner, Vice Pres.-Gen. Mgr.



All-American of yesteryear is Ray Poole, New York Giants' end formerly of Ole Miss.

May The Best Team Win

CIRCLE INN LIQUOR STORE

2546 Poplar Ave.

BEST WISHES

GREEN FRONT LIQUOR STORE

123 S. WELLINGTON

Before and After the Game
For Good Food Visit

John P. Robilio, Delicatessen

Vance and East — Phone 8-1291

ANDERSON-CLAYTON

COTTON

C. F. WORK & SONS, INC.

WOOD PRODUCTS

Moseley-Robinson Drug Store



Memphis Institution Since 1905

Southern Music Co.

COIN OPERATED MACHINES

1120 Union Ave.

Phone 36-5494

• • •

BEST WISHES

Nat Buring Packing Co.

• • •

Wm. C. Ellis & Sons

Established 1862

Founders, Machinists and Blacksmiths

Manufacturers of Warehouse Trucks

☆ ☆ ☆

A FRIEND

☆ ☆ ☆

JACK SPRAT

ENRICHED

FLOUR

Magnet Bros. Co.

•

COTTON MERCHANTS

•

41 Union Ave.

Merchants & Planters Bank

☆

WEST MEMPHIS, ARK.

☆

A Progressive Bank in a Progressive Community

Whitfield King & Co.

GENERAL INSURANCE

81 Monroe

5-3581



Tickets began to move as Dave (Buddy) Wells, manager of Crump Stadium, loaded Fred Goldsmith, Variety Club representative (right) and W. G. Whitman of the Knights of Columbus with pasteboards to be sold for the Giants-Bears game.

COLLINS MEMPHIS

Pure Jellies and Preserves
Sold by Grocers Everywhere

Swayne Latham Tire Co.

139 Vance Ave.
1465 S. 3rd St.

Phone 5-8477
Phone 9-2581



Joe
Signaigo
invites you to
make your
beer
Extra Aged
51

Williams Shade & Awning Co.

AWNINGS—SLIPCOVERS
DRAPERIES—VENETIAN BLINDS
LINOLEUM—SHADES

Nationally Advertised

807 Union



Tel. 5-4444

At Your Service . . .

Peabody Liquor Store

JACK LLOYD, OWNER



Located on Lobby Floor, Hotel Peabody



The Finest Wines,
Liquors and Champagnes

Dottley—the Kayo Kid of Football—Makes His Pro Debut

Virtually every football fan in the South knows about John (Kayo) Dottley, making his professional bow this fall with the Chicago Bears at fullback.

He's the big, hard running, speedy fullback who showed in Memphis previously with Ole Miss.

Dottley, who is 23 years old, stands 6 feet, 1 inch, and weighs 200 pounds. He was the nation's leading ground gainer in 1949 with a total of 1,312 yards, the third highest in National Collegiate history. Dottley also was one of the leaders last fall, with a total of 1,007 yards. He compiled this impressive record with an Ole Miss eleven which won only three games in 1949 and five in 1950.

The new Bear fullback hails from McGehee, Ark., where he was a schoolboy sensation. Besides starring in football, Dottley competed in track as a runner. He was officially timed in 9.8 for the 100-yard dash.

Dottley was unanimous All-Southeastern Conference selection for the past two seasons. He gained All-American recognition. This earned him a bid to the annual North-South and Senior Bowl post-season games, in which he competed as the starting fullback for the Southern teams. Also Dottley recently was with the College All-Stars against the Cleveland Browns in their game before some 95,000 fans at Chicago.

Dixie coaches call Dottley the greatest fullback prospect the South has produced in many years. General Bob Neyland, head coach at Tennessee, rates Dottley as one of the most outstanding players he has ever seen. Two former professional aces, Bruiser Kinard, present line coach at Ole Miss, and Mike Holovak, Boston College head coach, also are loud in their praise of Dottley. Holovak, who played fullback for the Bears in 1947 and 1948, believes Dottley is the best fullback prospect he has encountered in collegiate ranks.

The logo for Pepsi-Cola, featuring the word "PEPSI" in a stylized, bold, sans-serif font, followed by "COLA" in a similar font. A small registered trademark symbol (®) is located between the two words.

More Bounce to the Ounce

Before you buy any car

Drive

Chrysler's New V-8 — 180 H.P.

America's Finest Automobile

John T. Fisher Motor Co.

211 So. Dudley

Phone 2-1143

J. W. PILLEY HOME BUILDING

SERVICE

787 S. Willett

• Phone 7-5144

Southern Millwork & Hardware Co.

Wholesale Exclusively

MEMPHIS, TENN.

•
SIKESTON, MO.

FLORENCE, ALA.

**Memphis
Plywood
Corporation**

**METHODIST
HOSPITAL
PHARMACY**

World Famous

SILVER SLIPPER

SOUTH'S SMARTEST SUPPER CLUB

FLOOR SHOWS NIGHTLY

**Finest Bands in the Land
Macon Road off Highway 70**

• **Superb Foods and Cuisine**
• **Phone 4-1480 for Reservations**

G. D. HOOK & CO.

"REALTORS"

119 Madison

Phone 5-5685

Jos. C. Culligan Ornamental Iron Works

4956 Old Summer Road

Phone 48-5955

SPEEDWAY PHARMACY

1013 Jackson Ave.

Phone 5-4646

HUMPHREYS-GODWIN CO.

2246 PARK AVE

BILL DWYER LIQUOR STORE

2860 POPLAR AVE.

FREUHAUF CARTER CO.

Division of Fruehauf Tractor Co.

587 Hernando

BELLEVUE LIQUOR STORE

LIQUORS—WINES—GIN

1339 S. BELLEVUE

The Wabash Screen Door Co.

Manufacturers of
Screen Doors, Window Screens, Storm Sash
And Washboards

JOBBER WELCOME

NEOGRAM SIGN CO.



417 S. Martin

Phone 5-1211

SHELBY ELECTRIC CO., INC.

112 E. IOWA

We Specialize in Delicatessen and Kosher Style
Foods, Featuring Kosher Zion Sausage Products

Dinners Served—5 to 9 P. M.

Closed All Day Sundays

KOSHER STYLE DELICATESSEN B. & S.

78 Madison

Call 38-9613 For Delivery Service in Downtown Area

E. L. MERCERE, INC.

99 S. SECOND ST

MOLER BARBER COLLEGE

Complete Training in Practical and
Scientific Barbering

82 N. 2nd St.

Phone 5-8108

ESQUIRE LIQUOR STORE

LIQUORS—WINES—GINS

104 South 2nd Street

Conley Frog & Switch Co.



362 BODLEY AVE.

E. D. Schumacher, President
Ernest P. Schumacher, Vice-President
Karl M. Blanchard, Vice-President
J. B. Simmons, Secretary-Treasurer
United Service & Research, Inc.
Mortgage Bankers — Realtors
Appraisals
81 Madison Building
MEMPHIS, TENN.
Phone 5-5303
Schumacher & Simmons Insurance Agency
INSURORS

GOOD LUCK

H. R. ALTICK

COTTON

161 S. FRONT

Alexander Marble & Tile Co.

631 Madison Ave.

Phone—8-1221

SLEDGE & NORFLEET

COTTON

109 S. FRONT

BEST WISHES

Russell Heckle Seed Co.

31 LINDEN AVE.

THE MINNOW SHOP

All Kinds Fishing Baits and Sporting Goods
For The Fisherman

1188 S. Bellevue

Phone 9-6778



A FRIEND



THE CITIZENS BANK

Member F.D.I.C.

COLLERVILLE, TENNESSEE

BEST WISHES



CEDAR GROVE DAIRY

L. T. Barringer & Co.

COTTON

66 S. Front St.

Memphis, Tenn.

Rhodes-Jennings Furniture Company

• • •

Main at Jefferson

COMPLIMENTS

Steele Motor Company

321 South Main Street

WILLYS-OVERLAND DISTRIBUTORS

☆ ☆ ☆

A FRIEND

☆ ☆ ☆

33-2651

2529 Summer

The Home Equipment Co.

**QUALITY APPLIANCES
SUPERIOR HOME IMPROVEMENTS**

"The Firm That Satisfies"

GEO. BATES BEN MILLER BERT BATES

C. E. Theobald & Son

• • •

FALLS BLDG.

Continental Mortgage Co.

624 Falls Building

W. C. MASON, JR., Mgr.

Lloyd Motor Co.

**NEW AND USED AUTOMOBILES
WHOLESALE & RETAIL**

Highest Cash Dollar for Your Car

410 Union Ave.

Phone 5-0459

DISTRIBUTORS
OF

**DESOTO
PLYMOUTH**

Automobile Sales Co.

PHONE 38-1381
309 UNION AVE.

Central Supply Co. Inc.

WHOLESALE
**PLUMBING, HEATING AND
INDUSTRIAL SUPPLIES**
303 Madison Ave.



COMPLIMENTS OF

A FRIEND



J. F. Shelton Co.

Specializing in
HEATING AND AIR CONDITIONING

194-196-200 Poplar Ave.
PHONE 8-6513

T. J. White & Co.

COTTON

112 S. Front Street

Burial Plan to Fit Every Need
One to Eighty—No Examination
Low Premium—Legal Reserve

Spencer-Sturla Memorial Chapel

FUNERAL DIRECTOR

1745 Union Ave. (Ambulance Service) 7-7700

Bus. Phone 8-2266

Res. Phone 34-0105

Milton Bowers Welding Co.

Welding and Machine Work

346 Madison

Weaver-Ozier & Co.

COTTON MERCHANTS

105 S. Front

Howell Construction Co.

EDWIN C. HOWELL

**COMMERCIAL • INDUSTRIAL
RESIDENTIAL CONSTRUCTION**

Towers Building 1503 Union Avenue

Phone 2-8437

MEMPHIS 4, TENN.

Taylor-Wheless & Myers

CONTRACTORS

1401 May St.

Phone 36-5924

Tennessee Valley Electric Supply Co.

296 Adams Ave.

PHONE 5-2777

BEST WISHES

•

Weil Bros. Cotton, Inc.

•

93 S. Front

Phone—5-5969

MADISON WEAVERS

22 S. Third

**RE-WEAVING ALTERATIONS
REPAIRING**

Joseph Gainsburg — Memphis, Tenn.

PACKING HOUSE MARKET

194 N. MAIN

BOYLE INVESTMENT CO.

**REAL ESTATE INSURANCE
MORTGAGE LOANS**

148 Monroe

Call 8-6811

FARRELL-CALHOUN

PAINT MANUFACTURERS

SINCE 1905

☆ ☆ ☆

SOUTHWEST STEEL CORP.

☆ ☆ ☆

K's DRIVE-IN RESTAURANT

E. H. Crump Blvd. between So. Main and Third Sts.

Phone 9-9200

Floors The American Way

R. E. SHULER COMPANY

1142 Jefferson

Phone 36-5379

CRESPI COTTON CO.



161 S. FRONT ST

Television By

RADIO CENTER

260 South Bellevue

Phone 32-2773

AUTOMATIC HEATING & SERVICE COMPANY

Sales and Service On All Gas Burning Equipment

22 So. Cooper

Phone 7-4491

North Memphis Lumber Co.



Phone 37-7421

BEST WISHES

DACUS LUMBER CO.

WEST MEMPHIS, ARK.

WORSLEY PIANO CO.

71 Union

1216 Union Ave.

WADE BROS.

REALTORS—INSURORS

2010 Union Ave.

JOHNSON REPAIR SERVICE

BICYCLES

780 Chelsea

Phone 8-4568

SIMPLEX PARTS CO.

C. R. McDANIEL

D. W. McLEMORE CO.

REAL ESTATE AND INSURANCE

Property Management

81 Madison Bldg.

Phone 5-5750

VALLEY PRODUCTS CO.

Brooks and I.C.R.R.

Pera & Pera WeOna No. 51

Groceries and Fresh Meats—Fresh Vegetables

908 Chelsea

Phone 5-5651

RELIABLE FURNITURE CO.

416 So. Main

Phone 8-7354

SERVE

RONCO

Spaghetti, Macaroni and Pure Egg Noodles

MEDICAL ARTS BUILDING

4th and Madison

Modern Offices—Centrally Located

CRUMP LIME & CEMENT CO.

1570 Lamar Ave.

Hemphill Diesel Schools, Inc.

311 S. Main St.

**BISHOP PLUMBING & HEATING
SUPPLY CO.**

147 Winchester Ave.

Phone 5-0888

MEMPHIS PLATING WORKS

GOLD, SILVER, NICKLE, COPPER, BRASS
AND CHROMIUM PLATING

678 Madison

Bob Billions Auto Service

GENERAL AUTO REPAIRING

1355 Jackson Ave.

Phone 2-7358

JOHN C. LARKIN CO.

INSUROR—REALTOR

Commerce Title Bldg.

Phone 8-3217

BELLANTI'S LIQUOR STORE

625 Union Ave.

Compliments of

J. O. Patterson Funeral Home

2204 Chelsea

COCKROFT MOTOR SALES

1069 S. Bellevue Blvd.—Phones 9-1308 — 9-7143

1120 Lamar—Phone 32-2517

H. W. LAY & CO., INC.

Lay's Potato Chips

B. J. LEE C.

PLUMBING—HEATING—AIR CONDITIONING

236 Adams

Phone 5-0667

Compliments of

A. W. HEUERTZ

POLLARD AND POLLARD

Insurance Counsellors

All Kinds of Insurance Including Life

SURETY BONDS

2713 Sterick Building

Phone 8-4285

Carl N. Pollard

TRI-STATE LIQUOR STORE

328 So. 2nd St.

"May the Best Team Win"



W. M. BARR & CO.

MANUFACTURERS
MEMPHIS, TENNESSEE

BEST WISHES

TO TWO GREAT TEAMS

Hoehnberg Bros. Co.

COTTON

Compliments of

Shelby-Skipwith
Inc.

**York Refrigeration &
Air Conditioning**

"Serving Industry Over 30 Years"

DESIGNERS AND BUILDERS OF
INDUSTRIAL BLOW PIPE AND
DUST CONTROL SYSTEMS

Matthews
Blow Pipe Company

125 Keel Ave. Memphis, Tenn.

8-6352

There is No Finer Mattress

Right! There is no finer mattress, anywhere or at any price, than a super-comfortable SEALY mattress. Over three generations of mattress-making experience are "built in to" every SEALY, so be sure that your next mattress is a SEALY mattress; you too will agree that



with the Clearest Picture of them all
and up to 50%
More Detail

Everyone Cheers



Admiral

Engineered to out perform
Any Set . . . Anywhere . . .
. . . Any Time—



Model 321K35

See New Models at Your Dealers
Also the Famed Admiral Dual Temp Refrigerator

Distributed by

ORGILL BROTHERS & CO.

Wholesale Exclusively — Our 105th Year
Memphis, Tenn. Little Rock, Ark. Jackson, Miss.
(Electrical Appliances)

Don't wake up with a

Backache!



Restonic **\$ \$69⁵⁰**
Orthotonic
Mattress

Guaranteed Restonic extra firm
orthotonic innerspring unit.

Matching **\$ \$69⁵⁰**
Box Spring

For best results use orthotonic
mattress with matching ortho-
tonic box spring.

**Sleep on the mattress
that removes the cause!**

Do you often wake up with
a soreness or aching in your
back? This is commonly
caused by improper support
of the spine, allowing your
body to sag into an unnatural
position.

RECOMMENDED BY PHY-
SICIANS. The Restonic Ortho-
tonic Innerspring Mattress
gives you comforting relief
from backache, because it
supports the spine in a natural
position. See it today! Sleep
on it tonight!

Contact Your Favorite Furniture or Department Store

MANUFACTURED BY

**SLUMBER PRODUCTS
CORPORATION**

MEMPHIS, TENNESSEE