

My First Pro. game

A red calendar page is shown at an angle. The date is December 9, 1951. The text on the page reads:

DECEMBER
19 9 51
EAGLES
vs.
GIANTS
SHIBE PARK

Lon Keller

enjoy *don't*
There's no better Bourbon!

There's no better Bourbon!

There's no better Bourbon!

NOW 5 YEARS OLD

There's no better Bourbon

**OLD
HICKORY**

Straight **BOURBON** *Whisky*



86 PROOF

\$ **4.00**
4/5 QUART

\$ **2.53**
PINT



DECEMBER 9 • 1951

PHILADELPHIA EAGLES

vs.

NEW YORK GIANTS

A SET of six (6) souvenir programs for all the Eagles 1951 home games will make an excellent Christmas gift for some boy or girl. Programs contain photos of the stars, action shots, thumbnail sketches, statistics and a wealth of information about the Eagles and their opponents.

The complete set is available for \$1.00; single issues for 35c each.

Please send check, stamps or coin to:

The Philadelphia Eagles
S. E. Corner, 15th and Locust Streets
Philadelphia 2, Pa.

Philadelphia Eagles Football Club

Owned and Operated by Philadelphians

ADMINISTRATIVE STAFF

JAMES P. CLARK *President*
FRANK L. McNAMEE *Treasurer*
PAUL C. LEWIS *Secretary*
VINCENT A. McNALLY *General Mgr.*
EDWARD S. HOGAN *Publicity Director*
JOSEPH A. DONOGHUE *Ticket Manager*
FRED SCHUBACH *Equipment Manager*

COACHING STAFF

WAYNE MILLNER *Head Coach*
JIM TRIMBLE *Assistant Coach*
FRANK WIECHEC *Trainer*

OFFICE

Southeast Corner, 15th and Locust Streets
Philadelphia 2, Pa.

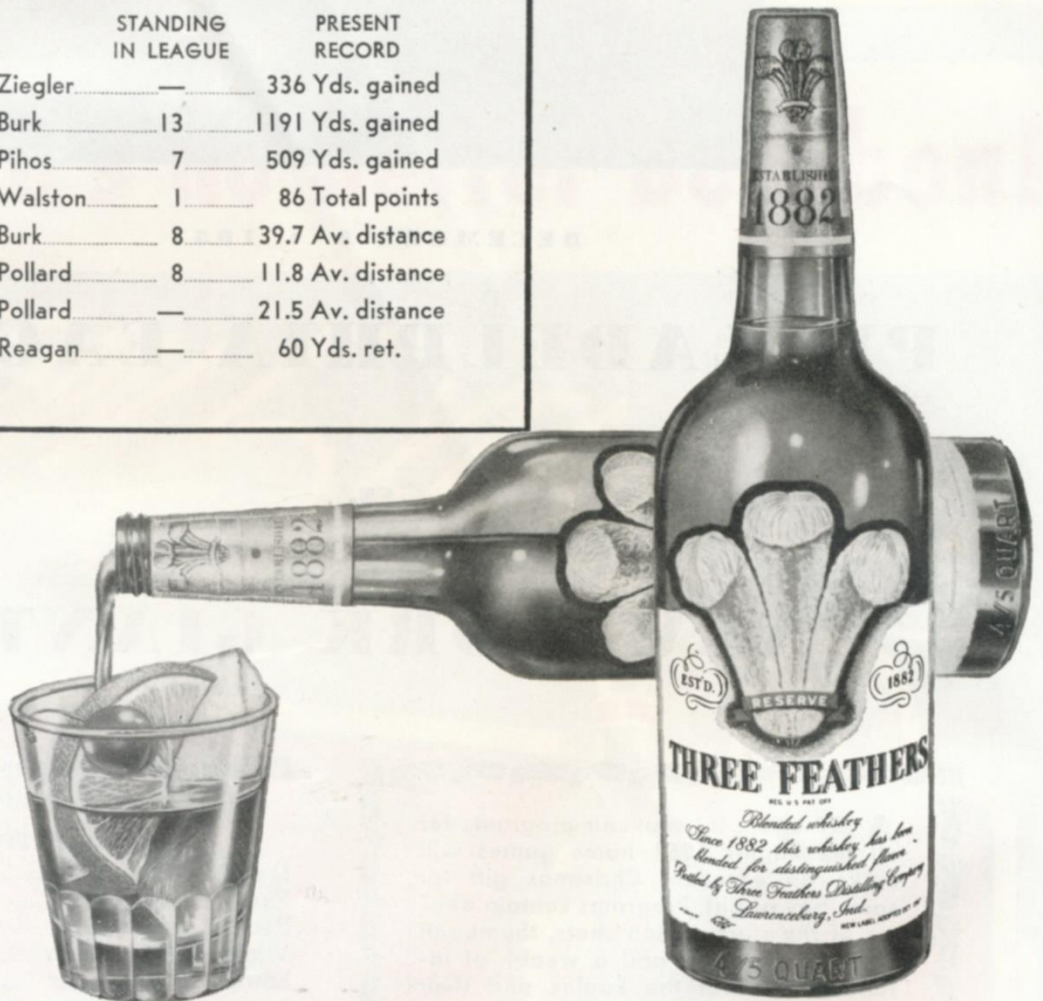
Telephone: PEennypacker 5-4014

Represented for National Advertising by DON SPENCER COMPANY, INC., 271 Madison Ave., New York City

So popular!

EAGLE PACE SETTERS

		STANDING IN LEAGUE	PRESENT RECORD
Ground Gaining	Ziegler	—	336 Yds. gained
Passing	Burk	13	1191 Yds. gained
Pass Receiving	Pihos	7	509 Yds. gained
Scoring	Walston	1	86 Total points
Punting	Burk	8	39.7 Av. distance
Punt Returns	Pollard	8	11.8 Av. distance
Kickoff Returns	Pollard	—	21.5 Av. distance
Interceptions	Reagan	—	60 Yds. ret.



THREE FEATHERS



BLENDING WHISKEY. 86.8 PROOF. 65% GRAIN NEUTRAL SPIRITS. THREE FEATHERS DISTILLING CO., LAWRENCEBURG, IND.

HIGH SCORING ROOKIE

by **ED DELANEY**

Daily News Sports Reporter



FOOTBALL has had its dearth of sixty-minute men ever since the introduction of the platoon system in the grid sport.

Yet, if one were to take a vote on the number of fellows who'd like to play both offensive and defensive ball, the raising of hands would be too numerous to count. One member of the Philadelphia Eagles who would delight in such a maneuver is rookie end Bob Walston.

One thing is for certain—Walston wouldn't be a "greenie" in this department of the game. He acted in such a capacity as a collegian; playing defensive safety and offensive left halfback with the University of Georgia Bulldogs in 1947.

The reason for his switch to a wingman came at Wally Butts' direction when the Georgia mentor decided to take advantage of Bobby's pair of hands. You see Walston had snared three touchdown passes from his present teammate, Johnny Rauch, during the Bulldogs' 1947 season. His changing to left end on offense by Butts is explained by Walston in this manner.

"Wally felt that I would be more valuable to the team as a pass receiver," says Bob. "Too, we weren't overloaded at the terminal post and the year 1948 saw me used only on offense."

Butts' convictions certainly were vindicated as Walston snared 25 aerials for 525 yards in the '48 campaign. Selectors of All-Southeast Conference teams were cognizant of Walston's pass-catching ability that year, when they named him to the second team. Then in 1949, Bob continued the step forward and made the Conference's All-Star first eleven. He was also given honorable mention on many All-Americans.

The Rauch-to-Walston combination was a subject of conversation whenever people started talking football. His sensational work drew the attention of an Eagles scout and there was no hesitancy when Walston's name

cropped up on the draft list. He certainly hasn't let the Eagles down, since he is one of those diamonds you sometimes find in the rough.

Bobby admits to other sports preferences. He competed in such events as the high and low hurdles, broad jump, high jump and pole vault at Georgia. Also, he tried his hand at and was a success in boxing and swimming.

He numbers three incidents in his football life as ones which have offered him the greatest thrills. No. 1 was his being selected on the All-Southeast Conference team. No. 2 was his first touchdown in college football, when he grabbed a pass in the end zone against Oklahoma A. and M. in 1947. No. 3 was his catching seven passes for 144 yards in the 1948 game against Miami.

Bobby played in three different post-season games—the 'Gator Bowl in 1947, the Orange Bowl in 1948, and the Presidential Cup in 1950.

Prior to his joining the Eagles this year, Walston had seen only one pro battle. He went to watch his former Georgia teammate, Joe Geri, playing with the Pittsburgh Steelers against the Chicago Bears in Cincinnati, Ohio, during Geri's first season as a pro.

Today Walston has plenty of company in the pro ranks. Besides Rauch and Geri, other ex-Georgia teammates who have turned pro are Dan Edwards of the Yanks, Floyd Read of Green Bay and both Hamp Tanner and Nick Feher of the San Francisco 49ers. Bobby became a bridegroom just before reaching the Eagles' camp at Hershey. He wed Lynell Woodcock, whom he had met in his senior year at college. The lovely Mrs. Walston resided at Glennville, Georgia. They were married on July 8.

Already in the high-scoring ranks, Bobby will be heard from for a long time.

first with **football** in Philadelphia



**all University of
Pennsylvania
Games**

play-by-play **Byrum Saam**
presented by **ATLANTIC**

**CBS Saturday
Football Round-up**

immediately following Penn games
with **Red Barber**
presented by
GENERAL ELECTRIC

**all Philadelphia
Eagles Games**

play-by-play **Bill Sears**
presented by
MILLER HIGH LIFE

GRANTLAND RICE
Fridays 8 pm

"FOOTBALL FINAL"
Saturdays . . 5:30 pm

"KICK-OFF TIME"
preceding all Penn Games





78 MIKE JARMOLUK T



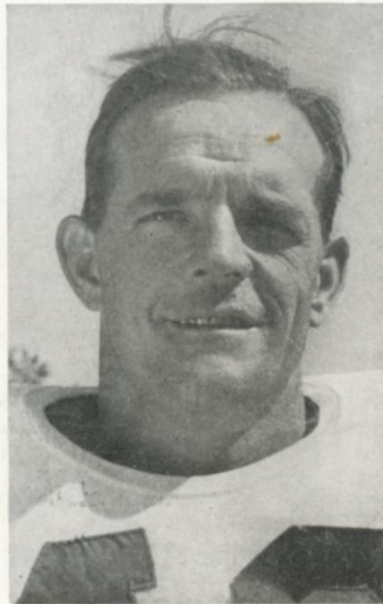
10 ADRIAN BURK QB



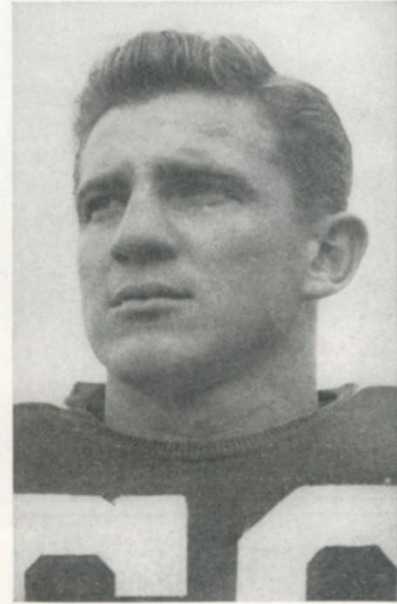
15 STEVE VAN BUREN HB



33 RUSS CRAFT HB



40 FRANK REAGAN HB



60 CHARLES BEDNARIK C



27 CLYDE SCOTT HB



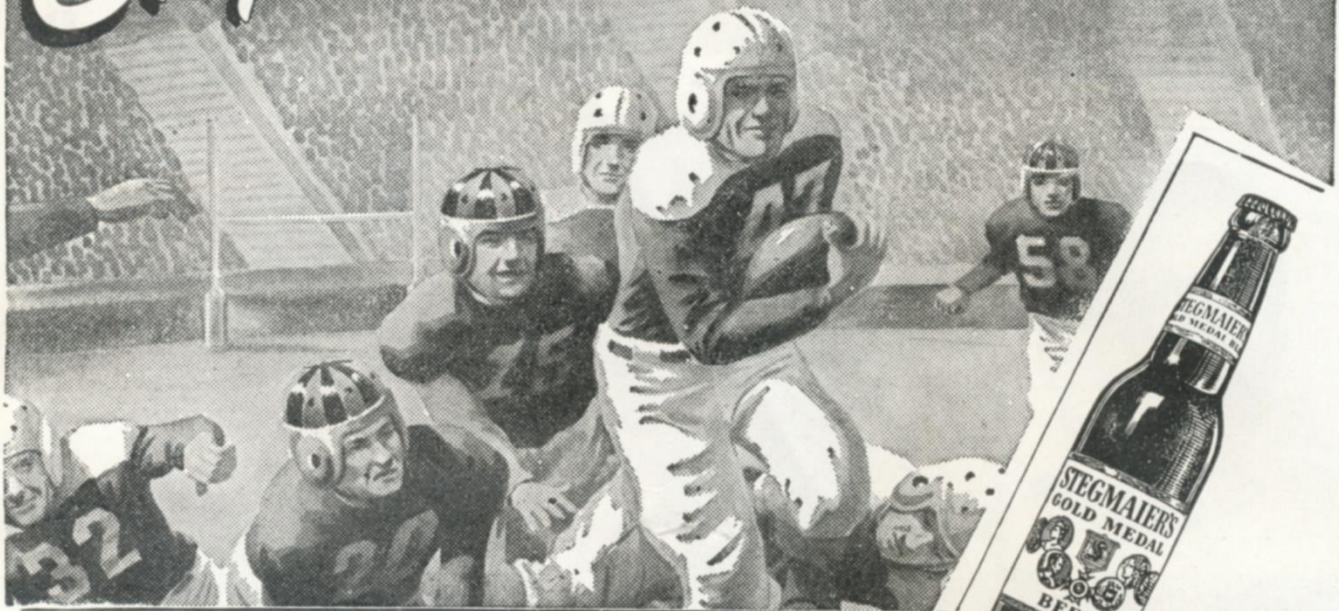
17 EBERT VAN BUREN HB

P
H
I
L
A
D
E
L
P
H
I
A

E
A
G
L
E
S

1951

Stegmaier's Scores Again!



Now Enjoy...
**OUR FINEST
BEER IN
94 YEARS**

Stegmaier Brewing Company, Wilkes-Barre, Pa.

Supreme in..

- TASTE
- FLAVOR
- SATISFACTION

Imported by

STEIN BEER COMPANY

52nd and Woodland Aves., Phila., Pa. Phone Saratoga 7-1000

For Prompt Delivery Phone Your Nearest Distributor



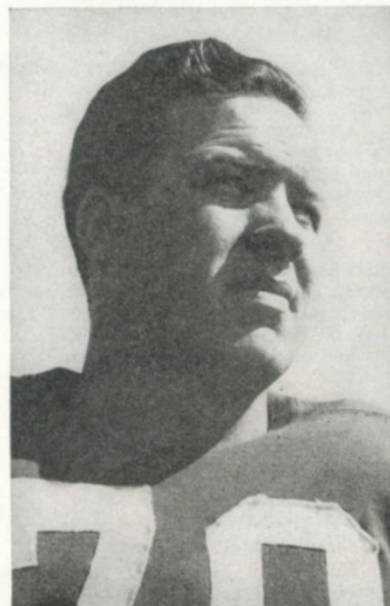
52 VIC LINDSKOG C



74 WALT BARNES G



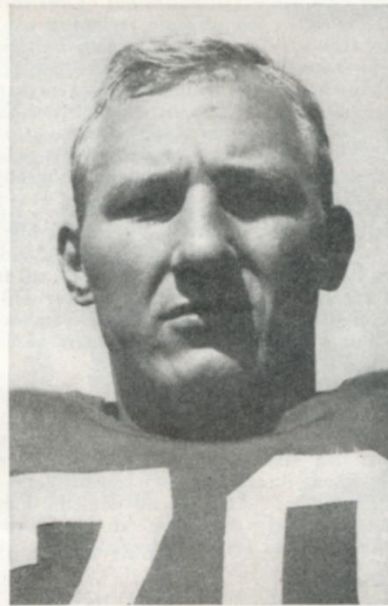
35 PETE PIHOS E



79 VIC SEARS T



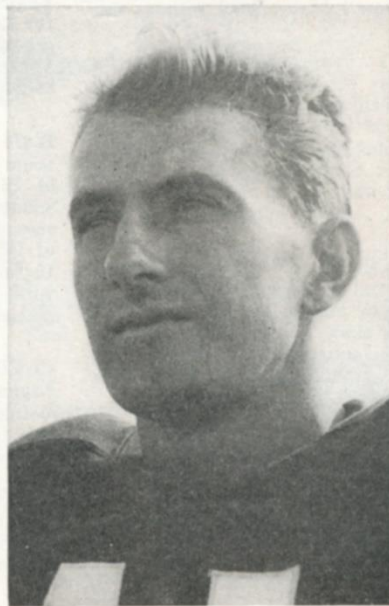
49 PAT McHUGH HB



70 AL WISTERT G



88 JAY MacDOWELL T



41 FRANK ZIEGLER HB

P
H
I
L
A
D
E
L
P
H
I
A

E
A
G
L
E
S

1951

EAGLE ETCHINGS

WALTER BARNES . . . Piggy . . . weight lifter and AAU wrestler of note . . . raises dogs for show purposes . . . talented caricaturist . . . one of finest physical specimens in National League . . . never out of condition . . . split right guard assignments with Frank Kilroy . . . another key man in Bo McMillin's line plans . . . defensive hero in All-Pro Bowl game . . . professional ball delayed by four years in Army . . . teammate of Steve Van Buren at LSU . . . works for Eagles in off season as ticket salesman . . . one of few bachelors on squad.

CHUCK BEDNARIK . . . Chuck . . . Killer . . . outstanding college player of the country in 1947 and 1948 . . . league outstanding rookie in 1949 . . . Eagle's bonus pick for 1949 season . . . in league only two years and already ranks with best in NFL history . . . fiery competitor and loves the game . . . equally adept on offense and defense but likes defense best where "I can smack 'em down" . . . backs up line on right side . . . capped brilliant performance in All-Pro Bowl game by intercepting pass leading to American Conference's winning touchdown . . . married and father of baby girl.

ADRIAN BURK . . . Big A . . . Abe . . . led nation's passers in 1949 while carrying Baylor University to its greatest season in 10 years . . . "Most Valuable Back" in Southwest in 1949 . . . that year completed 110 passes out of 191 throws for 1428 yards and 14 td's . . . one of main factors in All-Star's defeat of Eagles in 1950 . . . as pro rookie with Baltimore last year completed 43 out of 119 aerials for 798 yards and six td's . . . pitched two td strikes against Eagles . . . excellent punter and extra point specialist . . . averaged better than 40 yards per kick . . . booted 68-yarder against Detroit . . . bears strong physical resemblance to Sammy Baugh who also bears the name Adrian . . . married and father of baby boy.

RUSS CRAFT . . . Sturdy defensive back . . . great tackler and pass defender . . . intercepted seven aerials in 1950 for 70 yards . . . ran back kickoff for 103 yards and TD against Los Angeles Rams for NFL season high . . . all told returned 10 kickoffs for 327 yards and 19 punts for 113 yards . . . carried ball eight times for 52 yards . . . another key figure in Bo McMillin's plans for 1951 . . . married and father of two children.

KEN FARRAGUT . . . Rated top lineman in South . . . liked by opposing coaches . . . line backer for Mississippi . . . rates highly as offensive center . . . averaged better than 45 minutes per game for Ole Miss . . . regular center three years . . . pitches and throws discus for Reb baseball and track teams . . . direct descendent of Adm. David Glasgow Farragut, U. S. Naval officer immensely unpopular in the South during the 1860's . . . married and father of two children.

MARIO GIANNELLI . . . Yoyo . . . huge, agile Italian . . . considered one of best "men over center" in NFL . . . difficult to dislodge . . . fast man with the quip . . . keeps the boys entertained with mimicry . . . football his best dish . . . played 18 games in Everett (Mass.) high school without substitution . . . married.

HARRY P. (BUD) GRANT . . . Eagle's first draft choice for 1950 season . . . elected to play pro basketball with Minneapolis Lakers for one year . . . leading pass receiver for Minnesota in 1949, grabbing 22 aerials for 321 yards . . . entered Navy upon graduation from Superior (Wis.) Central High School in 1945 . . . played for Great Lakes Naval football team . . . greatest athletic thrill was playing with Great Lakes team that upset Notre Dame . . . deadly marksman with shot gun or rifle

JOHN GREEN . . . Ranked with best defensive wingmen in pro football . . . seldom fooled and never without a smile . . . up first time in 1946 but sent to minors for seasoning . . . back in 1947 and top hand ever since . . . star defensive performer in All-Pro Bowl game in January . . . tough, wiry and fast, he caught Charley Justice from behind in Shibe Park game with Redskins last October.

MIKE JARMOLUK . . . Biggest man on squad . . . five years of pro experience . . . joined Eagles after third game in 1949 . . . plays defensive tackle-end . . . likely to play offensive tackle this year . . . would welcome the opportunity . . . his agility amazing for big man . . . one of three Temple graduates on squad . . . his best when going is roughest . . . married and father of boy.

FRANK KILROY . . . Bucko . . . home town product from Temple University . . . tough, durable Irishman . . . joined Eagles in 1943 when only 21 years old . . . shifty for heavy man . . . plays guard and tackle, offense and defense, with equal ability . . . one of the club's strongest men . . . manages used car business . . . married and father of five children.

VIC LINDSKOG . . . Mr. Center . . . rated best offensive center in league . . . great blocker . . . All-America pivot on Stanford's Cinderella team of 1941 . . . keen student of T formation . . . type to make successful coach . . . won Golden Gloves heavyweight championship on Coast in 1941 . . . powerful physique . . . never out of condition . . . leads calisthenics in practice . . . stellar down field blocker . . . married and father of boy.

JAY MacDOWELL . . . Redhead . . . his specialty roaring in and grabbing passer . . . plays defensive end on five-man line . . . has knack of diagnosing plays . . . uses weight and height to best advantage . . . one of reasons why Eagles' defense so potent . . . married and father of baby girl.

JOHN MAGEE . . . Maggie . . . Tank . . . sharp blocker . . . good team man . . . durable as tank and as hard to budge . . . spent three years in Marines and then returned to Rice to help Owls win Southwestern title.

PAT McHUGH . . . Hinge-hips . . . Red Fox . . . Razor's Edge . . . Slicer . . . Bones . . . most nervous player on club . . . ace defender against passes . . . uses height and long arms to best advantage . . . intercepted four passes for 34 yards and returned two kickoffs for 45 yards . . . also good ball carrier when necessary.

JIM PARMER . . . Hard hitter and tackler . . . teammates say he hits as hard as Van Buren . . . hurt in 1950 but led team in scoring . . . bucked over for seven td's . . . caught pass for eighth . . . carried ball 60 times for 203 yards . . . snared six passes for 103 yards and one td . . . plays offense and defense.

PETE PIHOS . . . standout star in All-Pro Bowl . . . caught 38 passes for 447 yards and six TD's last year . . . came up with his usual excellent performance in defense . . . four-year total with Eagles: 141 passes caught for 2079 yards and 29 touchdowns . . . right end on offense, left end on defense . . . likes it rough . . . married and has two children.

FRANK REAGAN . . . One of key men in Eagles' celebrated defense cordon . . . safety man with six years' pro experience . . . started pro career with New York Giants . . . joined Eagles in 1949 . . . team's leading punter . . . booted 54 times for 2270 yards for 42.0 average . . . longest 68 yards . . . intercepted four passes for 132 yards and one TD . . . returned six punts for 38 . . . smart field general . . . married and father of four children.

DAN SANDIFER . . . Deeper . . . joined Washington Redskins in 1948 . . . and as Redskins rookie set league record of 13 passes intercepted . . . mark tied last year by Spec Sanders, New York Yanks . . . traded to Detroit before 1950 season in deal for Bill Dudley . . . picked up by Eagles middle of 1950 season . . . used mainly on punt returns . . . ran back 15 for 155 yards or 39 average . . . took four kickoffs for 89 yards . . . made All-Southeastern Conference in 1947 . . . played against Eagles in 1948 College All Star battle.

CLYDE SCOTT . . . Smackover . . . Scooter . . . drafted by Eagles in 1947 . . . joined club in 1949 . . . fastest human in football . . . thwarted by injuries 1949 and 1950 . . . played only first half of 1950 opener with Cleveland . . . out remainder of year with broken shoulder blade . . . sound of wind and limb again . . . one of few to make All America in football and Olympiad in track . . . finished close second in 110-meter high hurdles in 1948 Games at London . . . has run 100-yard dash in 9.4 . . . his return in sound physical shape "pickup" club needs . . . married and father of two children.

VIC SEARS . . . Oldest man in point of service on squad . . . two-platoon man, plays offense and defense . . . good inside worker, seldom spectacular . . . never rattled . . . valuable hand to new coaching staff . . . type of player coaches like . . . seems to get better each year.

WALTER STICKEL . . . Big Stick . . . joined club in time for pre-season swing in 1950 . . . home-grown product from Northeast High School and University of Pennsylvania . . . started pro career with Chicago Bears . . . teammate of Mike Jarmoluk when both members of Bears . . . agile and clever . . . married.

EBERT VAN BUREN . . . Younger half of "Jim Clark's Moving Vans" . . . brother to celebrated Steve, for seven years Eagles' brightest star . . . plays offense or defense . . . well recommended as line backer . . . like Steve good inside runner . . . hurt half of 1950 season but played spectacularly in North-South game . . . for LSU carried ball 33 times for net of 100 yards . . . missed four games because of injury . . . didn't play high school football . . . too light . . . played a bit on sandlots before entering LSU . . . worked his way from third team . . . in Army for 29 months . . . won Purple Heart and Bronze Star in Battle of Okinawa . . . wounded in both legs and left arm . . . captained 1950 LSU Tigers . . . may be used as ball carrier and defensive back for Eagles . . . looks a lot like Steve.

STEVE VAN BUREN . . . Wham Bam . . . Supersonic Steve . . . Blockbuster . . . Older half of Jim Clark's Movin' Vans . . . greatest ball carrier in history . . . holder of six NFL records: 1146 yards one season (1949); total yards career, 5533; attempts one year, 263; attempts career, 1208; touchdowns one year, 18; touchdowns running one year, 16 . . . operated only 50 percent last year . . . spur from big toe on left foot removed in operation . . . missed opening game against Cleveland . . . played in second game against Cards and hurt again . . . this time in chest . . . missed Rams game but came back for final nine . . . totaled 629 yards on 188 carries

. . . now well again . . . foot completely healed . . . has amazing average of 75.8 yards per game since joining Eagles in 1944 . . . best single game performance 205 yards against Pittsburgh in 1949 . . . his return to topflight duty could work wonders with club . . . married, has two children.

BOB WALSTON . . . First string left offensive end for three years at Georgia . . . also stars on defense . . . dependable extra point kicker and safety man . . . fast and tricky . . . led SEC in pass receiving in 1948 with 25 receptions for 525 yards . . . also quite adept with his fists, not on the football field, but in the ring . . . awarded trophy as "Outstanding Fighter" in Augusta Golden Gloves Tournament in January 1951 . . . won heavyweight division knocking out soldier Francis Vernon of Camp Gordon, Ga. . . veteran of military service.

NORMAN WILLEY . . . Strong and durable . . . could play fullback as well as end . . . likes to crash into enemy backfield . . . hard man to elude . . . married.

AL WISTERT . . . Whitey . . . Big Ox . . . superlative leader . . . great credit to professional football . . . his comeback last year when knee shattered in All Star game, one of sport stories of year . . . rode bicycle from home in Havertown to Shibe Park daily . . . distance of 12 miles to strengthen knee . . . courageous work rewarded . . . started second game of season and played remainder of year . . . captained team since 1947 . . . won numerous awards for selling insurance . . . married and father of two girls.

FRANK ZIEGLER . . . The Cat . . . Zoomer . . . team's top ground gainer in 1950 . . . carried ball 172 times for 733 yards . . . best day against Cardinals at Shibe Park, grinding out 113 yards on 18 attempts, including a 52-yard belt . . . caught 13 passes for 216 yards and two td's . . . returned three punts for 20 and 10 kickoffs for 204 . . . second to Browns' Marion Motley in league ground gaining . . . packs much power for little man . . . one of three Georgia Tech stars on team . . . married.



TUNE IN!

PHILADELPHIA EAGLES

Football Broadcasts
Home or Away

When you can't attend the games in person fans, be sure to follow the Eagles on radio with Miller High Life. Remember, too, that you can add an extra measure of pleasure to your listening enjoyment with Miller High Life, the Champagne of Bottle Beer.

A genuine Milwaukee beer . . . brewed and bottled by the Miller Brewing Company ONLY . . . and ONLY in Milwaukee, Wisconsin.



FLY HIGH
Eagles

PLAY-BY-PLAY
BROADCASTS OVER
THESE RADIO STATIONS

WCAU—Philadelphia

WILK—Wilkes-Barre • WCMB—Lemoine-Harrisburg
WLYC—Williamsport • WAEB—Allentown

In the Philadelphia area, Miller High Life is distributed by:

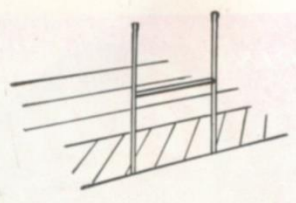
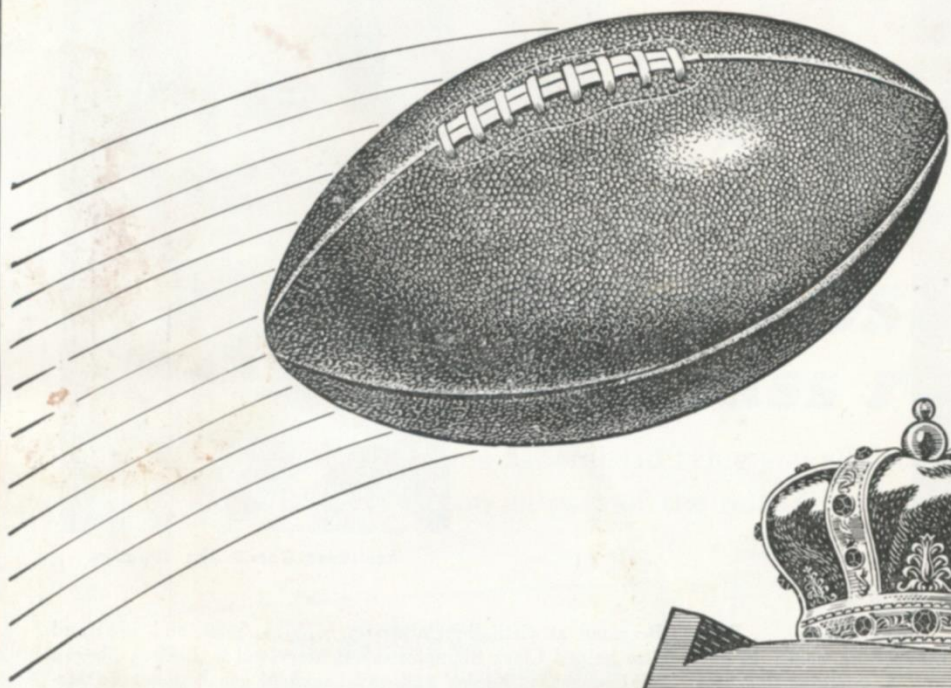
JOHN A. CLEMENT, JR.

S. E. Corner 21st and Allegheny Ave., Phila. 32, Pa. BALDWIN 3-9292



Miller
HIGH LIFE

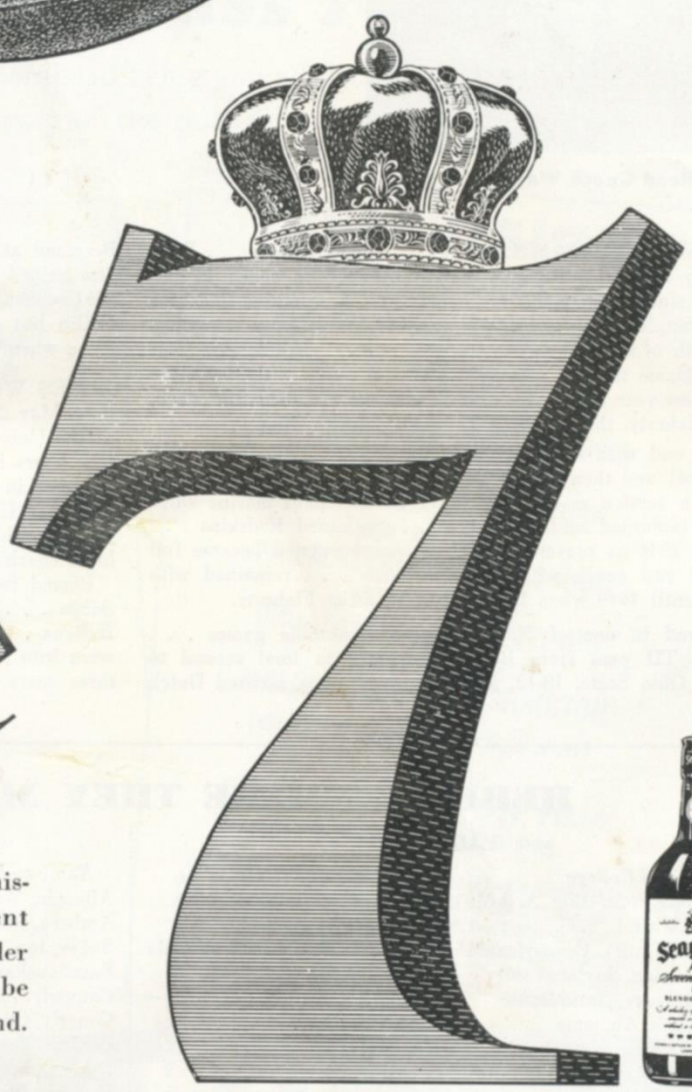
THE CHAMPAGNE OF BOTTLE BEER



SEVEN is the tops! That's the most touchdown passes by one man in one game.

Sure RECORD

SEVEN—Seagram's 7 is the tops in whiskey, too! It's the most magnificent whiskey of them all. Smoother... milder... it's the one whiskey that's *Sure* to be enjoyed every time it's passed around.



Say Seagram's and be Sure

Seagram's 7 Crown. Blended Whiskey. 86.8 Proof. 65% Grain Neutral Spirits. Seagram-Distillers Corporation, New York

DRINK

Coca-Cola

add Zest

PHILADELPHIA EAGLES LINE-UP (OFFENSE)

BY POSITION

<u>LE</u> Walston 83	<u>LT</u> Sears 79	<u>LG</u> Barnes 74	<u>C</u> Lindskog 52	<u>RG</u> Wistert 70	<u>RT</u> Kilroy 76	<u>RE</u> Pihos 35
			<u>QB</u> Burk 10			
<u>LH</u> S. Van Buren 15						<u>RH</u> Sandifer 31
			<u>FB</u> Parmer 43			

NEW YORK GIANTS LINE-UP (DEFENSE)

BY POSITION

<u>LE</u> Duncan 86	<u>LT</u> Weinmeister 73	<u>LG</u> Baker 60	<u>RG</u> Krouse 70	<u>RT</u> DeRogatis 78	<u>RE</u> Poole 82
<u>C</u> Cannady 52					<u>RBU</u> Landry 49
	<u>LH</u> Tunnell 45			<u>RH</u> Amberg 12	
		<u>SAFETY</u> Schnellbacher 83			

OFFICIALS

Name	Position	College	No.
Emil Heintz	Referee	Pennsylvania	9
Samuel M. Wilson	Umpire	Lehigh	19
Charles F. Berry	Head Linesman	Lafayette	31
Eugene E. Miller	Back Judge	Penn State	26
Michael Lisetski	Field Judge	Muhlenberg	16

See line-ups on page 16 for Eagles' defense and Giants' offense

PHILADELPHIA COCA-COLA BOTTLING COMPANY

PHILADELPHIA EAGLES
SQUAD

10—Burk	B	23	6'2"	190
11—Rauch	B	24	6'1"	195
15—Van Buren, S.	B	30	6'½"	202
17—Van Buren, E.	B	26	6'2"	208
27—Scott	B	27	5'10"	170
31—Sandifer	B	24	6'2"	190
32—Pollard	B	23	6'	196
33—Craft	B	30	5'9"	175
35—Pihos	E	27	6'1"	205
36—Cowhig	B	29	6'2"	218
40—Reagan	B	32	5'11"	178
41—Ziegler	B	27	5'11½"	175
43—Parmer	B	24	6'	195
44—Willey	E	24	6'2½"	215
45—Sutton	B	27	5'11"	170
49—McHugh	B	31	5'11½"	166
52—Lindskog	C	35	6'1½"	203
53—Farragut	C	22	6'4½"	230
60—Bednarik	C	26	6'3"	230
64—Giannelli	G	30	6'	260
67—Magee	G	28	5'10"	220
70—Wistert	G	30	6'1"	214
72—Steere	G	23	6'3"	235
74—Barnes	G	33	6'3"	230
75—Stickel	T	28	6'3"	245
76—Kilroy	T	30	6'2"	235
78—Jarmoluk	T	28	6'5"	250
79—Sears	T	32	6'3½"	225
80—Armstrong	E	25	6'2"	195
83—Walston	E	23	6'	190
86—Grant	E	24	6'3"	198
88—MacDowell	T	32	6'2½"	220

SCIENCE
DISCOVERED IT
YOU CAN
PROVE IT-



"NO UNP
AFTER-

WHEN YOU
CHESTER

MORE COLLEGE ME
CHESTERFIELD THAN



NEW YORK GIANTS SQUAD

12—Amberg	B	22	5'11"	195
20—Tidwell	B	26	5'10"	185
21—Sulaitis	G	30	6'2"	215
22—Rowe	B	28	6'	182
30—Scott	B	25	6'1"	195
31—Price	B	26	5'11"	190
34—Jackson	B	26	5'11"	210
35—Pritchard	B	32	5'11"	168
41—Griffith	B	22	5'11"	190
42—Conerly	B	27	6'1"	185
44—Rote	B	23	6'	195
45—Tunnell	B	26	6'1"	183
49—Landry	B	26	6'1"	195
51—Woodard	C	25	6'2"	225
52—Cannady	C	27	6'2"	225
53—Rapacz	C	26	6'4"	260
60—Baker	G	28	6'2"	215
62—Murray	G	25	6'2"	240
65—Barzilauskas	G	30	6'1"	230
67—Maronic	G	30	5'9"	218
70—Krouse	T	24	6'3"	250
73—Weinmeister	T	28	6'4"	235
75—Albright	T	22	6'1"	232
77—Hannah	T	29	6'3"	220
78—DeRogatis	T	24	6'4"	240
79—Coulter	T	26	6'5"	260
80—Mote	E	28	6'2"	190
82—Poole	E	29	6'3"	215
83—Schnellbacher	B	28	6'2"	190
86—Duncan	E	25	6'2"	205
87—Wilkinson	E	24	6'3"	215
88—McChesney	E	24	6'2"	190
89—Hudson	E	21	6'4"	215

**PLEASANT
TASTE"**
**U SMOKE
ERFIELD**

**N AND WOMEN BUY
ANY OTHER CIGARETTE**

DRINK

Coca-Cola

add Zest

NEW YORK GIANTS LINE-UP (OFFENSE)

BY POSITION

<u>LE</u> McChesney 88	<u>LT</u> Coulter 79	<u>LG</u> Albright 75	<u>C</u> Rapacz 53	<u>RG</u> Murray 62	<u>RT</u> Hannah 77	<u>RE</u> Mote 80
			<u>QB</u> Conerly 42			
	<u>LH</u> Griffith 41			<u>FB</u> Price 31		<u>RH</u> Scott 30

PHILADELPHIA EAGLES LINE-UP (DEFENSE)

BY POSITION

<u>LE</u> Grant 86	<u>LT</u> Stickel 75	<u>MIDDLE GUARD</u> Magee 67	<u>RT</u> Jarmoluk 78	<u>RE</u> Willey 44
		<u>C</u> Bednarik 60	<u>FB</u> Cowhig 36	
<u>LHB</u> Craft 33		<u>MIDDLE BACKER</u> Parmer 43		<u>RHB</u> Sutten 45
		<u>SAFETY</u> Reagan 40		

NEW YORK COACHING STAFF

STEVE OWEN (Phillips University), Head Coach
 AL SHERMAN (Brooklyn College), Assistant Coach
 ED KOLMAN (Temple University), Assistant Coach
 JIM LEE HOWELL (University of Arkansas), Assistant Coach

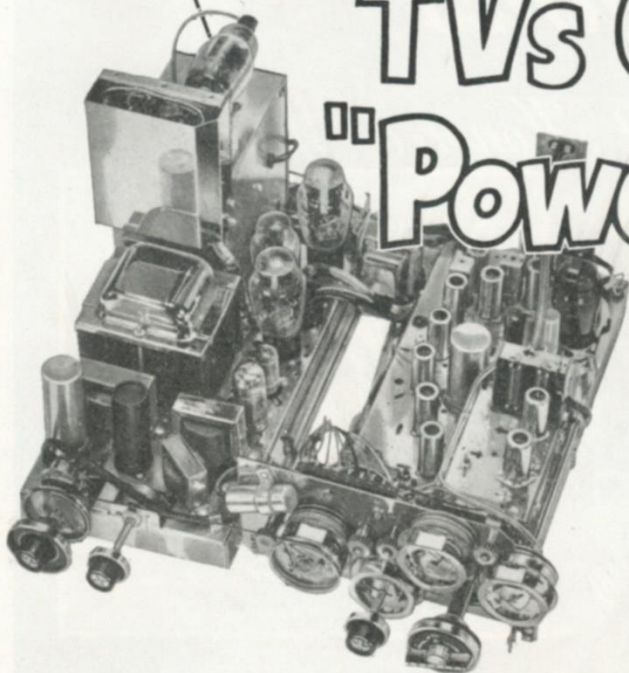
See line-ups on page 13 for Eagles' offense and Giants' defense

PHILADELPHIA COCA-COLA BOTTLING COMPANY

NEW FOR 1952

TV's Greatest "Power Plant"

FROM
PHILCO

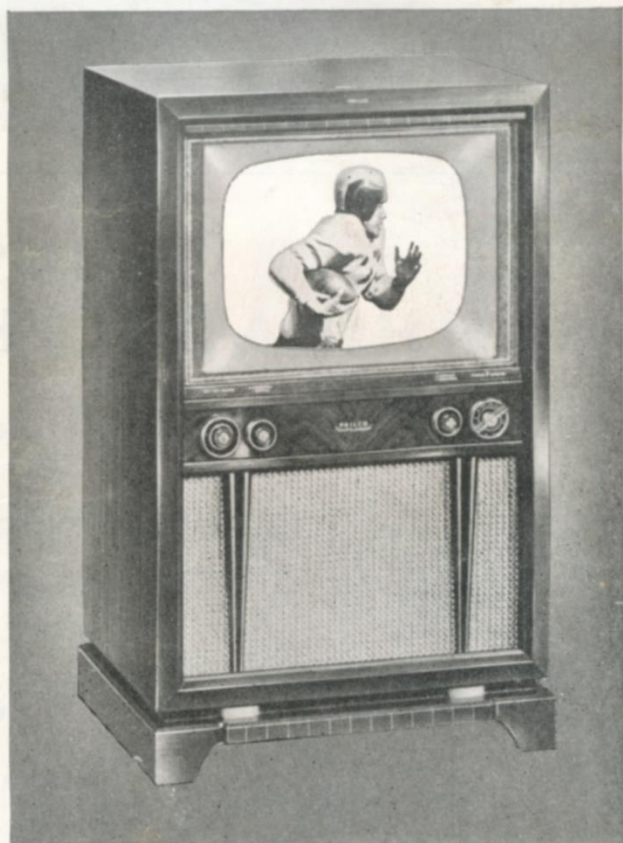


New 1952 Models as Much as

30% Less

THAN 1951 PRICES

Here's performance never before approached . . . value never before offered . . . yes, new 1952 Philco television with power-packed Balanced Beam Chassis, super-sensitive "Colorado" Tuner, and Built-In Aerial that outperforms all others. Yours now at *new low prices which sweep away the last reason for any other choice but a Philco!* It's the sensation of the television industry; don't settle for less!



*Enjoy great football games
in the stadium whenever possible . . .*

and when you can't go to the games, watch for leading games being televised AND WATCH THEM ON A BRAND NEW 1952 PHILCO.

Designed for Future Developments in U.H.F. and COLOR. Of course, all new Philco television sets are designed in advance for future TV developments. Your Philco dealer has the full story.

YOURS ON EASY TERMS AT YOUR PHILCO DEALER

OFFICIAL WATCH FOR NATIONAL FOOTBALL LEAGUE



Longines



The World's Most Honored Watch

ACCEPTED AS OFFICIAL WATCH
FOR TIMING
CHAMPIONSHIP SPORTS EVENTS
IN ALL FIELDS ALL OVER THE WORLD
INCLUDING THIS GAME



*Product of
Longines-Wittnauer Watch Company*

**Outfitters of
PHILADELPHIA EAGLES**

•

With MAC GREGOR-GOLDSMITH FOOTBALL EQUIPMENT
— used by leading professional football and baseball teams
and college and high school teams throughout the country

•

MITCHELL & NESS

Distributors

1312 ARCH STREET

PHILADELPHIA

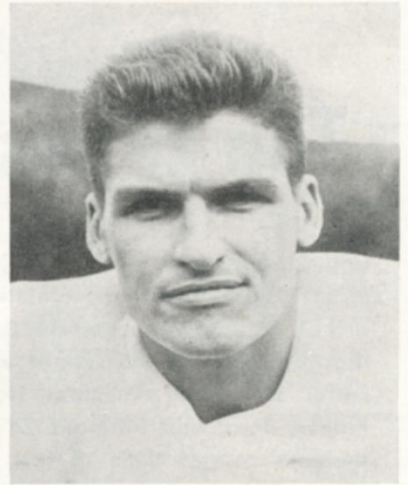
Meet the Giants



Arnie Weinmeister

Arnie Weinmeister (73) is one of those rare linemen who captivates the fans the way a runner or passer does. His tremendous speed and intuition on a play make him a marked man on the field. No. 1 Giant choice from the player pool of former Yankees, Arnie wasted no time in establishing himself as one of the most colorful and accomplished tackles in Giant history.

Al De Rogatis (78), in combination with Weinmeister, gives the Giants a tackle tandem par excellence. A New Jersey native who hails from Newark, Al won All-American honors at Duke and is launching his third season with the Giants. A big, rawboned slasher, he delights in wading in and specializes in making life uncomfortable for enemy passers.



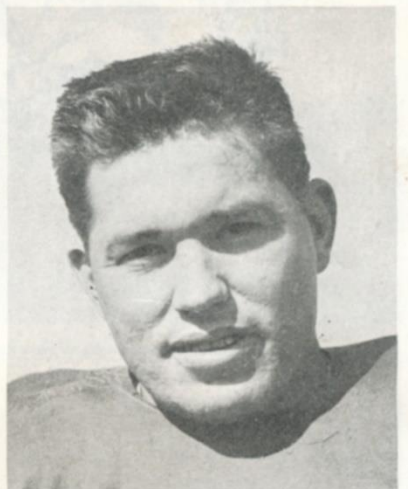
Al De Rogatis



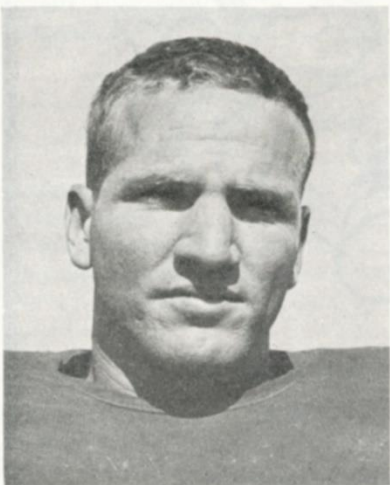
John Cannady

John Cannady (52), a solid and efficient Giant workman for five years, reached his peak last season in the personal attention job he did on Marion Motley. Middle linebacker in the rock-ribbed Giant defense, John concentrated on Motley with such good effect that Cleveland's great fullback made but 86 yards in three games.

Ray Poole (82) is carrying on a tradition founded by his brother Jim in supplying the Giants with devastating defensive end play. His speed, size and savvy have established him as one of the top wingmen in the NFL. Last year Ray blossomed out as a place-kicking specialist also and he has developed into a sure-fire field goal and extra-point marksman.



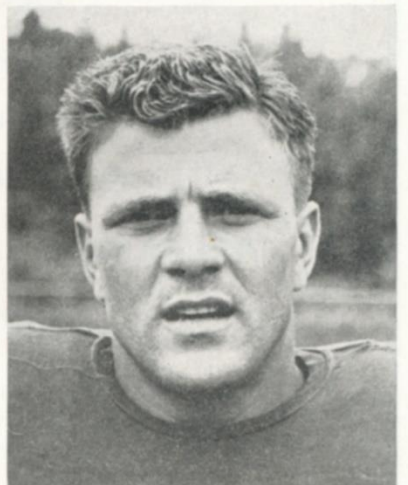
Ray Poole



Joe Scott

Joe Scott (30), four years a Giant, qualifies as one of the best breakaway runners in football. Fast, strong and clever, he's a constant threat on running plays, pass receptions and runbacks. Last season he averaged 4.5 yards on 72 rushes, caught nine passes for a 26.7 average, returned one punt 23 yards and 14 kickoffs for an average of 25.1 yards. Joe is equally effective from A and T formation.

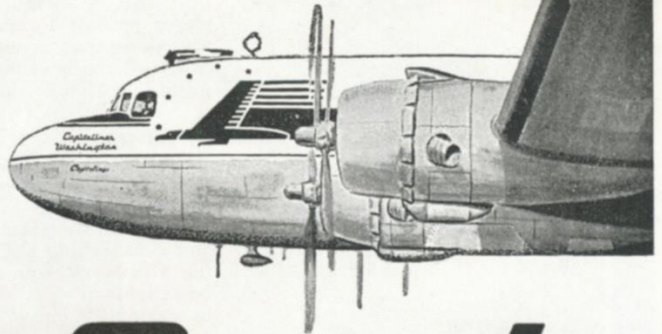
Eddie Price (31) came to the Giants last year after having set all manner of ground-gaining records at Tulane. He made good with a vengeance and finished fourth among the NFL ball-carriers with 703 yards and a 5.6-yard average. Eddie, a compact 190-pounder with a good turn of speed, is the half-back type of fullback and a guy who is capable of going all the way any time the defense gets careless.



Eddie Price

Top teams fly with *Capital*

Capital, one of the nation's major scheduled airlines, has carried more athletic teams than any other airline in the world. Coaches know that Capital's Special Flight Service saves travel time and eliminates travel fatigue. Players know that Capital's 24 years of experience assures them of fast, comfortable trips.



Capital

AIRLINES

TEAMS THAT HAVE FLOWN WITH CAPITAL

University of Alabama
Boston College
Boston University
Dartmouth College
Duke University
University of Illinois
University of Kentucky

Louisiana State University
University of Maryland
Michigan State College
University of Minnesota
North Carolina State College
University of North Carolina
University of Notre Dame

Ohio State University
Pennsylvania State College
University of Pittsburgh
Purdue University
University of Tennessee
Tulane University
United States Naval Academy

Vanderbilt University
University of Virginia
Wake Forest College
University of West Virginia
The College of William and Mary
University of Wisconsin
Chicago Cardinals

Cleveland Browns
Detroit Lions
Green Bay Packers
New York Yankees
Philadelphia Eagles
Pittsburgh Steelers
Washington Redskins

REDDY KILOWATT

Your
Electric
Servant
continues
to be the
**ALL-AMERICAN
CHOICE**



... scores every time with dependable
and reliable electric service

PHILADELPHIA ELECTRIC COMPANY

A BUSINESS-MANAGED, TAX-PAYING UTILITY COMPANY
OWNED BY MORE THAN 100,000 STOCKHOLDERS



NATIONAL FOOTBALL LEAGUE STATISTICS

LEADING GROUND GAINERS

	Atts.	Yds. Gained	Long Gain	Ave.
Goode, Washington.....	163	736	33	4.5
Towler, Los Angeles.....	96	692	79	7.2
Price, N. Y. Giants.....	214	662	25	3.1
Dottley, Chi Bears.....	116	610	36	5.3
Hoernschemeyer, Detroit.....	105	602	85	5.1

Longest Gain : 85 yards, Robt. Hoernschemeyer, Detroit vs. Green Bay, 11/22/51 TD.

LEADING PASSERS

	*Stdg.	Atts.	Com.	Yds. G	TdP	Pct. Com.	LP	Int.	Ave. Gain Yds.
Van Brocklin, Los Angeles.....	1	164	84	1525	13	51.2	81	11	9.30
Graham, Cleveland.....	2	220	124	1917	14	56.4	81	16	8.71
Waterfield, Los Angeles.....	3	146	72	1263	8	49.3	91	8	8.65
Romanik, Chi Bears.....	4	93	41	734	2	44.1	54	6	7.89
Baugh, Washington.....	5	118	53	922	5	44.9	53	13	7.81

Longest Completion: 91 yards, Robt. Waterfield, Los Angeles vs. Chi. Bears, 12/2/51 TD.

*Standings based on average gain per pass attempted.

LEADING PASS RECEIVERS

	Received	Yds. Gained	Long Gain	Touchdowns
Hirsch, Los Angeles.....	54	1268	91	14
Polsfoot, Chi Cards.....	48	653	80	3
Soltau, San Francisco.....	47	696	48	5
Lavelli, Cleveland.....	37	516	47	4
Edwards, N. Y. Yanks.....	37	460	53	3

Longest Completion: 91 yards, Elroy Hirsch, Los Angeles vs. Chi. Bears, 12/2/51, TD.

LEADING SCORERS

	Td.R	Td.P	Tot. Td.	XP	XPM	FG	FGA	Tot. Pts.
Walston, Philadelphia.....	0	7	7	26	3	6	10	86
Walker, Detroit.....	1	4	5	38	1	6	12	86
Hirsch, Los Angeles.....	0	14	14	0	0	0	0	84
Waterfield, Los Angeles.....	3	0	3	34	2	8	15	76
Jones, Cleveland.....	7	5	12	0	0	0	0	72

LEADING PUNTERS

	Stdg.	No.	Ave. Dist.	Longest
Gillom, Cleveland.....	1	56	45.0	66
Albert, San Francisco.....	2	33	44.6	66
Smith, Detroit.....	3	41	42.1	73
Van Brocklin, Los Angeles.....	4	44	41.3	58
Polsfoot, Chi Cards.....	4	34	41.3	56

Longest Punt: 75 yards, Verl Lillywhite, San Francisco vs. Cleveland, 9/30/51.

"Let's Go Philadelphia"

HYGIENIC SANITATION CO.

Philadelphia, Harrisburg, Johnstown, Altoona, Pittsburgh,
Washington, D. C., Cumberland, Md., Olean, N. Y.

PENNSYLVANIA'S LARGEST EXTERMINATING ORGANIZATION

Smartest play ..

of the day is a quick dash—after the game—to the goal of a hearty football-weather dinner . . . and a winning musical score . . . in the Stratford Garden.

Bennett E. Tousley,
Vice-President and General Manager

THE Bellevue-Stratford

BROAD AND WALNUT STREETS, PHILADELPHIA 2, PA.

"New in face . . . Old in grace"

Best Wishes
from



PRINTERS FOR THE
PHILADELPHIA EAGLES
FOOTBALL CLUB, Inc.

Union Printers • Publishers
223 S. 5th St., Philadelphia 6

EAGLES HEADQUARTERS
IN NEW YORK CITY
**HOTEL
CONCOURSE PLAZA**
Grand Concourse and 161st Street
A few short blocks from Polo
Grounds and Yankee Stadium.

•
under same management
**HOTEL
MARTINIQUE**
32nd Street at Broadway
1 block from Penn Station
Subway direct to Polo Grounds

you're welcome at

the **Willard hotel**
Washington, D. C. Home
of the Eagles

- Completely air conditioned
- Modern, friendly service
- Historic host to the great for over a century

**14th Street and
Pennsylvania Ave.**
Douglas A. Stalker, Manager
An Abbell Hotel

CHICAGO HOME OF
THE PHILADELPHIA EAGLES

**DEL PRADO
HOTEL**

53rd St. at Lake Michigan

HOTELS PATRONIZED BY THE PHILADELPHIA EAGLES

Meet the Giants



Travis Tidwell

Travis Tidwell (20) first caught Steve Owen's eye while playing for the Giant coach in the post-season Senior Bowl Game of 1949. After watching him in action, Steve wasted no time in signing up the Auburn star for the Giants. A take-charge quarterback, serviceable in both T and A formations, Trav won his spurs last year and is a valued alternate to Charley Conerly in the signal-calling and passing slot.



Cha. Conerly

Charley Conerly (42) rewrote the NCAA passing records as a Mississippi senior in 1947 and already has earned several listings in the NFL book. He holds the NFL record for most passes completed in one game, 36, and has eclipsed the aerial marks of his illustrious Giant predecessors. A single-wing tailback in college, Chuck automatically qualified for A-formation duty. He does all right as a T quarterback, too. He's the sparkplug and clutch ace of the Giants.



Jim Duncan

Jim Duncan (86) made the grade with the Giants last year as an unheralded rookie out of Wake Forest. He was a key member of Steve Owen's great line, playing regularly on defense at left end. A rugged 205-pounder, his crashing tactics made life miserable for enemy passers and stripped enemy runners of their blocking protection. He's carrying on this season in the same stalwart fashion.



Jon Baker

Jon Baker (60), who came to the Giants two years ago, has established himself as one of pro football's outstanding defensive guards. Middle-man in Steve Owen's five-man line, he's practically impossible to move. In addition to being impregnable to frontal assault, he's a nimble gent who willingly assumes a lot of lateral responsibility. An All-America at California, he played five years for the Golden Bears thanks to wartime eligibility concessions.

GRAHAM, MOTLEY HERE WITH BROWNS

The Cleveland Browns, winners of the 1950 World Championship title and hurtling on their way toward another, will wind up the 1951 season with the Eagles at Shibe Park next Sunday.

Both the Browns and Eagles felt that the Cleveland victory of 20-17 earlier this year was a lucky one. So Sun-

day's finale shapes up as one of the best, with the Eagles vowing to put a temporary halt in the Cleveland locomotion.

On display will be such Cleveland "greats" as: Otto Graham, Marion Motley, Mac Speedie, Dub Jones, Dante Lavelli and Ken Carpenter.

DON'T FORGET THE DATE: SUNDAY, DEC. 16, SHIBE PARK. KICK-OFF: 2 P. M.

OFFICIAL FOOTBALL SIGNALS

1



OFFSIDE or FREE KICK VIOLATION
Hands on hips
ENCROACHMENT—Same signal followed by placing one hand on top of cap.

2



CRAWLING, PUSHING or HELPING RUNNER
Pushing movement of hands to front with arms downward.

3



ILLEGAL MOTION AT SNAP
Horizontal arc with either hand.

4



ILLEGAL FORWARD PASS
Waving hands behind back.
Intentional Grounding of Pass—Same as above followed by raised hand flung downward.

5



UNSPORTSMANLIKE CONDUCT
Arms outstretched, palms down.
(Same signal means continuing action fouls are disregarded.)

6



INTERFERENCE WITH FAIR CATCH or FORWARD PASS
Pushing hands forward from shoulder with hands vertical.

7



HOLDING
Grasping of one wrist.
ILLEGAL USE OF HANDS or ARMS
Holding Signal followed by Interference Signal.

8



UNNECESSARY ROUGHNESS
Military salute.
Clipping—Salute followed by striking back of knee with hand.
Running into or Roughing the Kicker—Salute followed by swinging leg.
Running into Passer—Salute followed by raised arm swung forward.
Tripping—Salute followed by hooking foot behind opposite ankle.

9



DELAY OF GAME or EXCESS TIME-OUT
Folded arms.
ILLEGAL FORMATION—Same signal followed by over and over rotation of forearms in front of body.

10



TOUCHDOWN, FIELD GOAL or SUCCESSFUL TRY
Both arms extended above head

11



SAFETY
Palms together over head.

12



LOSS OF DOWN
(Follows signal for foul.)
Tapping both shoulders with finger tips.

13



PENALTY REFUSED, INCOMPLETE PASS, PLAY OVER, or MISSED GOAL
Sifting of hands in horizontal plane.

14



FIRST DOWN
Arm raised, then pointed toward defensive team's goal.

15



DEAD BALL or NEUTRAL ZONE ESTABLISHED
One arm aloft, open hand
(With fist closed—Fourth Down)

16



NO TIME-OUT or TIME-IN WITH WHISTLE
Full arm circles to simulate winding clock.

17



TIME-OUT
Hands criss-crossed over head.
TOUCHBACK
Time-Out Signal followed by arm swung of side

The Official Watch for Timing Today's Game is Longines—"The World's Most Honored Watch."

1879 "KENFORD PRODUCTS" 1951

FORD & KENDIG COMPANY

Pipe — Valves — Fittings
Power Piping & Engineering Specialties
Mill — Mine & Railroad Supplies

MAIN OFFICE AND WAREHOUSE
1428-30-32 Callowhill Street
PHILADELPHIA

Branch Office, Warehouse, Shops and Fabricating
 Department

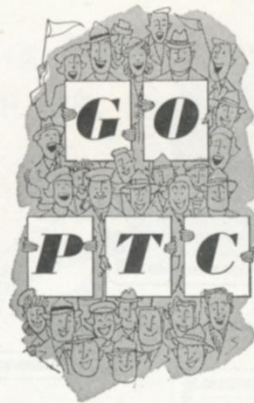
WASHINGTON AND CHERRY STREETS
 CONSHOHOCKEN, PA.

Branch Office and Warehouse
 GLEN RIDDLER, DELAWARE COUNTY, PA.

HAUGHTON WEYMOUTH & BISHOP

INSURANCE BROKERS FOR THE EAGLES

FIDELITY-PHILADELPHIA TRUST BUILDING
 PHILADELPHIA 9, PA.



BEAT TRAFFIC JAMS AND "SIDE-STEP" PARKING PROBLEMS

Instead of miles of annoyance, driving in jammed-up traffic, you can have miles of relaxed travel when you go PTC.

No stop-and-go traffic, no long walks from the parking lot, no parking fees, no more missing the kick-off. You'll get to the game quickly and economically by PTC!



PHILADELPHIA TRANSPORTATION COMPANY

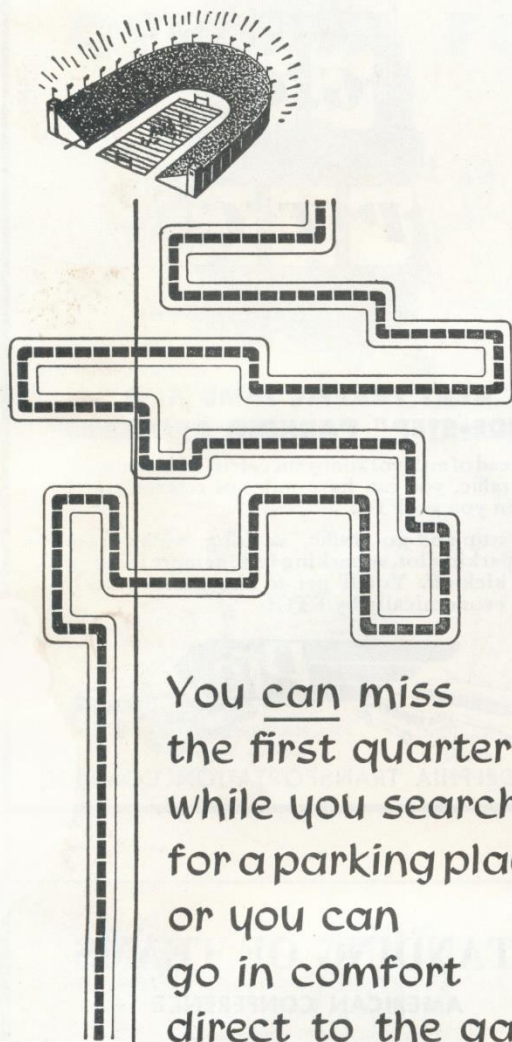
STANDING OF TEAMS

AMERICAN CONFERENCE

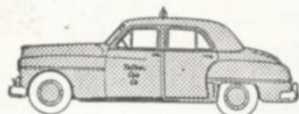
	W.	L.	T.	Pct.
Cleveland Browns	9	1	0	.900
New York Giants	7	2	1	.778
PHILADELPHIA EAGLES	4	6	0	.400
Washington Redskins	4	6	0	.400
Pittsburgh Steelers	3	6	1	.333
Chicago Cardinals	2	8	0	.200

NATIONAL CONFERENCE

	W.	L.	T.	Pct.
Los Angeles Rams	7	3	0	.700
Detroit Lions	6	3	1	.667
Chicago Bears	6	4	0	.600
San Francisco 49ers	5	4	1	.556
Green Bay Packers	3	7	0	.300
New York Yanks	1	7	2	.125



You can miss
the first quarter
while you search
for a parking place—
or you can
go in comfort
direct to the gate—
when you...



YELLOW CAB COMPANY OF PHILADELPHIA

1951 LEAGUE SCHEDULE

DATE	CLUBS	SCORES
Sept. 28	New York Yanks at Los Angeles.....	14-54
Sept. 30	Chicago Bears at Green Bay.....	31-20
" "	Cleveland at San Francisco.....	10-24
" "	Philadelphia at Chicago Cards.....	17-14
" "	Washington at Detroit	17-35
Oct. 1	New York Giants at Pittsburgh (N)	13-13
Oct. 6	San Francisco at Philadelphia (N)	14-21
Oct. 7	Chicago Bears at Chicago Cards	14-28
" "	Cleveland at Los Angeles	38-23
" "	New York Giants at Washington	35-14
" "	Pittsburgh vs. Green Bay at Milwaukee	33-35
Oct. 8	New York Yanks at Detroit (N)	10-37
Oct. 14	Chicago Cards at New York Giants	17-28
" "	Los Angeles at Detroit	27-21
" "	New York Yanks at Chicago Bears	21-24
" "	Philadelphia at Green Bay	24-37
" "	San Francisco at Pittsburgh	28-24
" "	Washington at Cleveland	0-45
Oct. 21	Chicago Cards at Washington	3- 7
" "	Los Angeles vs. Green Bay at Milwaukee	28- 0
" "	New York Yanks at Detroit	24-24
" "	Philadelphia at New York Giants	24-26
" "	Pittsburgh at Cleveland	0-17
" "	San Francisco at Chicago Bears	7-13
Oct. 28	Chicago Bears at Detroit	28-23
" "	Green Bay at New York Yanks	29-27
" "	Los Angeles at San Francisco	17-44
" "	New York Giants at Cleveland	13-14
" "	Pittsburgh at Chicago Cards	28-14
" "	Washington at Philadelphia	27-23
Nov. 4	Chicago Bears at Washington	27- 0
" "	Cleveland at Chicago Cards	34-17
" "	Detroit at Green Bay	24-17
" "	New York Yanks at New York Giants	31-37
" "	Philadelphia at Pittsburgh	34-13
" "	San Francisco at Los Angeles	16-23

1951 LEAGUE SCHEDULE

DATE	CLUBS	SCORES
Nov. 11	Chicago Cards at Los Angeles	21-45
" "	Detroit at Chicago Bears	41-28
" "	Green Bay at Pittsburgh	7-28
" "	New York Yanks at San Francisco	14-19
" "	Philadelphia at Cleveland	17-20
" "	Washington at New York Giants	14-28
Nov. 18	Chicago Cards at San Francisco	27-21
" "	Cleveland at New York Giants	10-0
" "	Detroit at Philadelphia	28-10
" "	Green Bay at Chicago Bears	13-24
" "	New York Yanks at Los Angeles	21-43
" "	Washington at Pittsburgh	22-7
Nov. 22	Green Bay at Detroit	35-52
Nov. 25	Pittsburgh at Philadelphia	17-13
" "	Chicago Bears at Cleveland	21-42
" "	Los Angeles at Washington	21-31
" "	New York Giants at Chicago Cards	10-0
" "	San Francisco at New York Yanks	10-10
Dec. 2	Chicago Cards at Cleveland	28-49
" "	Los Angeles at Chicago Bears	42-17
" "	New York Yanks at Green Bay	31-28
" "	Philadelphia at Washington	35-21
" "	Pittsburgh at New York Giants	0-14
" "	San Francisco at Detroit	20-10
Dec. 9	Chicago Bears at New York Yanks	
" "	Cleveland at Pittsburgh	
" "	Detroit at Los Angeles	
" "	Green Bay at San Francisco	
" "	New York Giants at Philadelphia	
" "	Washington at Chicago Cards	
Dec. 16	Chicago Cards at Chicago Bears	
" "	Cleveland at Philadelphia	
" "	Detroit at San Francisco	
" "	Green Bay at Los Angeles	
" "	New York Giants at New York Yanks	
" "	Pittsburgh at Washington	
Dec. 28	World's Championship Playoff in home city of National Conference Champion.	

THE PUZZLEMENT OF MR. PEABODY



Taking care of his investments cost Mr. Peabody many a gallon of midnight oil . . . not to mention several bushels of anguish as he wondered whether or not he'd made the right decisions.

Mr. Peabody, and others like him, could save much time and trouble by enlisting the aid of Fidelity's *Investment Supervisory Service*. Here he would find competent investment advice . . . tailored to his individual needs, and based on the *collective* judgment of experienced specialists. Here, too, he would find a full staff to relieve him of the many details of investment management.

Because of allowable tax deductions, the cost of this service is less than you might expect. Ask one of our trust officers. An appointment can be arranged to suit your convenience.

"Put your trust in Fidelity"

FIDELITY-PHILADELPHIA TRUST COMPANY



Organized 1866

BROAD AND WALNUT STREETS

PHILADELPHIA 9, PA.

SEASON BOOKS MAKE SPLENDID GIFTS

Gift Certificate

TO _____

FROM _____



PRESENT THIS CERTIFICATE TO *The Philadelphia Eagles* AND YOU WILL
RECEIVE _____ SEASON BOOKS FOR THE
EAGLE'S HOME GAMES OF THE _____ SEASON.

Issuing Signature

101

THE PHILADELPHIA EAGLES
15th and Locust Streets
Philadelphia 2, Pa. PE 5-4014

Here is a reproduction of the attractive gift certificate available for fans who want to give Eagles tickets as presents for Christmas or other occasions. The sender will long be remembered by anyone who receives this thoughtful gift.



Once again the Philadelphia Eagles Football Club makes it convenient for its many fans to purchase season books for the 1952 season... They make ideal Christmas Gifts.

The value of holding season tickets is manifold. There's no waiting in line, no worry about seats and, if you go in groups, you sit together.

Just come into the Eagles' office at 15th and Locust or mail in your request... A deposit of \$10.00 is required for the purchase of each season book.

An attractive, Christmas-colored Gift Certificate for your Christmas gift will be presented to you by the Eagles.

Don't delay... First come, first served for choice seats. Just fill out this application—

NAME _____ TELEPHONE _____

ADDRESS _____

NEW APPLICANT _____ RENEWAL _____

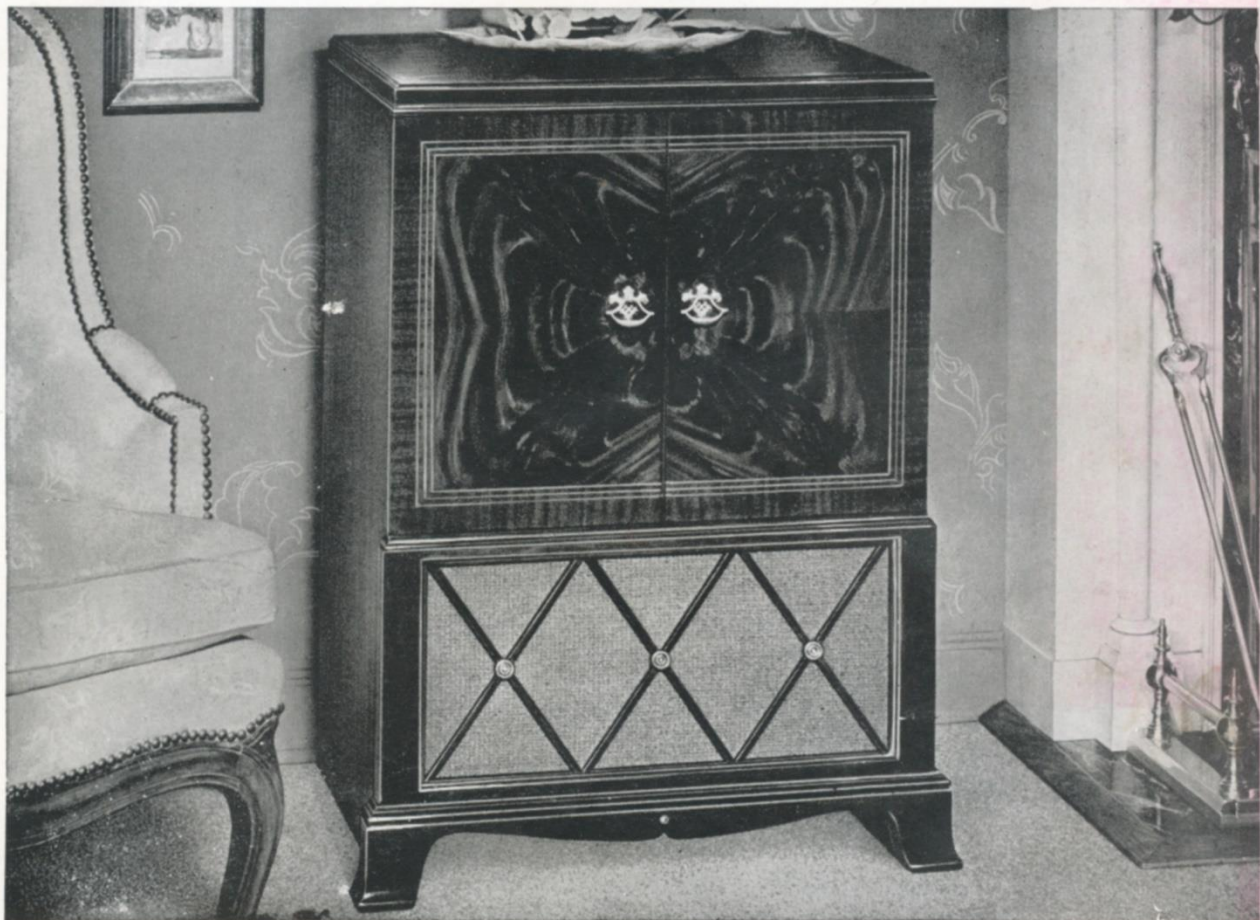
Please accept my application for _____ 1952 season tickets.

Enclosed find \$ _____ deposit.

Make out ticket orders to _____

Mail orders to _____

The Philadelphia Eagles Football Club, S. E. Corner 15th and Locust Streets—PE 5-4014



The RCA VICTOR

17 inch FAIRFIELD

is better looking in every way!



And with good reason . . . America's favorite console shows you why it pays to insist on RCA Victor television for your home. Easy, automatic tuning, with *all the controls you need* to get the picture just the way you want. New extra-powerful picture pick-up, famous RCA Victor "Golden Throat" tone system, shielded circuits and built-in antenna. *Better Looking In Every*

Way! 17" Million Proof television in an outstandingly beautiful 2-door cabinet—at an unexpectedly low price. Has "phono-jack" to plug in a record changer like the "Victrola" 45 attachment. Walnut, mahogany or limed oak finish. Ask to see the RCA Victor Fairfield, Model 7T122. It's America's fastest selling console television.

NORMAN PORRECA

1904 Chestnut Street, Philadelphia 3, Pa.

RI 6-6471



*There's only One
favorite!*

Ruffed grouse or ring-necked pheasant - wily quail
or cottontail - every sportsman hunts his favorite game.

And in beer, millions more have made
Miller High Life their favorite - the one beer
they prefer above all others! Try it - today!

Miller

HIGH LIFE

The Champagne of Bottle Beer

MILLER BREWING COMPANY • MILWAUKEE, WISCONSIN