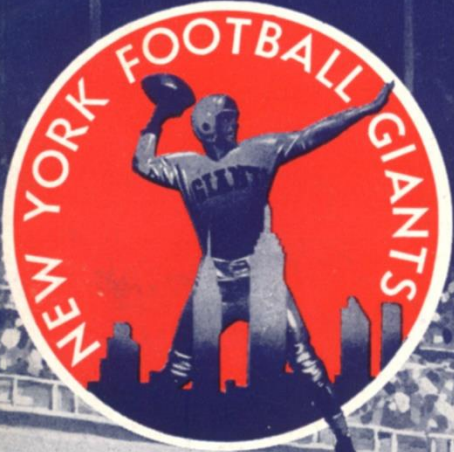


DECEMBER 1, 1957

YANKEE STADIUM



**GIANTS vs. 49ERS**

# Quality



Products of

*The American Tobacco Company*

"Tobacco IS OUR MIDDLE NAME"



Confound it, man,  
I asked for  
Canada Dry!



GINGER ALE  
CLUB SODA  
QUININE WATER

*A Mixer for Every Taste*



*Longines*

THE WORLD'S MOST HONORED WATCH

OFFICIAL WATCH FOR THE  
GIANTS-FORTY-NINERS  
FOOTBALL GAME

Longines, first watch of sport, is recognized as official for timing world records and international events by all international sports and contest associations. Every Longines watch, for whatever its use, is made to be the best of its kind. For yourself, as a gift, no other name on a watch means so much as Longines, the world's most honored watch.

*Longines-Wittnauer Watch Company*

OFFICIAL WATCH FOR



U. S. OLYMPIC COMMITTEE  
1948-1952-1956



NAT'L AERONAUTIC ASSN.



NAT'L COLLEGIATE ATHLETIC  
ASSN. CHAMPIONSHIPS



NATIONAL SKI ASSN.



AMERICAN  
POWERBOAT ASSN.



AAU CHAMPIONSHIPS  
AND MANY OTHERS



NATIONAL HORSE  
SHOW ASSN.



10 WORLD'S FAIR  
GRAND PRIZES  
28 GOLD MEDALS

Longines self-winding watches to cope with outdoor life—fully protected against all common watch hazards. For her—Longines Skylark Automatic, \$92.50. For him—Longines All-Guard Automatic, \$99.50. Other Longines watches from \$71.50.

# League Leaders

## CALSO SUPREME

# 300-PLUS

Today's Gasoline  
for Today's Horsepower

## RPM Supreme Motor Oil

—the motor oil that  
halts engine wear!



PRODUCTS OF THE CALIFORNIA OIL COMPANY

TM'S "CALSO," "RPM" AND  
CHEVRON DESIGN ©



Frank Gifford, Charley Conerly, Kyle Rote and Alex Webster led the Giants' first-half onslaught against the Cards

## The Problem Is Clear

**B**ACK at the Stadium, thankful after their Chicago excursion that they have had their last 1957 glimpse of the Cardinals' Ollie Matson, the Giants face the San Francisco Forty-Niners keenly aware of the problem they face for the rest of the season.

It is becoming increasingly obvious to Coach Jim Lee Howell's charges that they can expect no help from the rest of the league in their determined pursuit of the pace-setting Cleveland Browns.

That's all right with the Giants. While mindful that they must first dispose of the Forty-Niners today and the Steelers in Pittsburgh next Saturday to get the chance to win the Eastern Conference title on their own, they relish the idea of a showdown with the Browns.

There again was a Dr. Jekyll-Mr. Hyde aspect to the Giants' play against the Cards in Chicago last Sunday. But, significantly, Dr. Jekyll got the job pretty thoroughly done before Mr. Hyde which maybe is just an alias for Matson threatened to undo it.

The Giants were close to their 1957 peak, offensively and defensively, in their first half against a Cardinal team that had had a chance to rest and regroup forces since its visit to the Stadium two weeks previously.

Charley Conerly certainly never was more impressive than in pitching those long-range strikes to Bobby Epps, Bob Schnelker,

Kyle Rote, Frank Gifford and Ken MacAfee. The running game clicked too, with Alex Webster twice coming off the bench to supply the goal-line punch after his stand-in, Gene Filipiski, and Epps had helped Gifford keep the ball moving.

With the exception of one slip-up, on which the uncontainable Matson sprinted 76 yards to a score with a pass, Bill Svoboda's hard-bitten Giant defensive unit also was tremendous. Midfield pass interceptions put the New Yorkers on the road to two of their four touchdowns.

In the second half, the Giants eased up in all departments. You could almost hear them saying, "What's there to get excited

about, we're playing with their money."

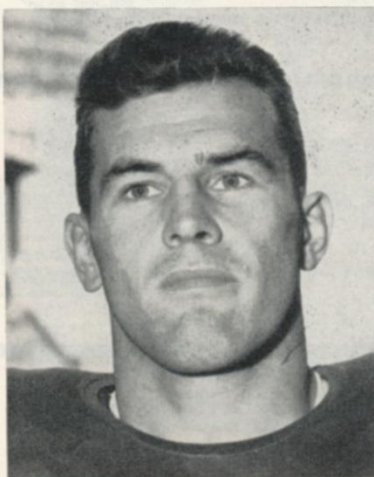
That, of course, is a dangerously complacent attitude in the rough, touch, delicately balanced National Football League of 1957—particularly when a guy named Matson is on the other side.

However, when the chips were down, the Giants came through. The defensive platoon made a couple of "gopher" goofs that resulted in two more long-play Cardinal touchdowns, but it also averted disaster by putting on a stirring goal line stand and intercepting three more passes for a total of five. (Em Tunnell stole three himself).

And, the offensive unit, which couldn't get untracked in the third quarter, generated enough momentum in the fourth period to keep the ball away from the re-surging Cardinals for lengthy spells that helped ease the pressure.

Last year, en route to the title, the Giants reached the three-quarter mark of their schedule with a 6-2-1 record. They stand 7-2-0 to date, so who can complain?

The only difference is that apparently nobody has told the Browns that you're supposed to lose at least a couple of times in this league. If that message doesn't arrive in Cleveland beforehand, the Giants will undertake its delivery, here personally, two weeks hence.



Gene Filipiski . . . capable stand-in

This book is published by HARRY M. STEVENS, Inc., 320 Fifth Avenue, New York 1, N. Y.

**PLEASE USE ENTRANCE RAMP NEAREST YOUR SEAT**

For Better Looks  
**MEN...**

Better Look for  
**MENNEN!**



**MENNEN  
Spray Deodorant  
For Men**

No. 1 seller gives round-the-clock protection.

60¢\* \$1.00\*



**MENNEN  
Skin Bracer**

More men personally chose this than any other.

30¢\* 60¢\* \$1.00\*



**MENNEN  
Bath Talc For Men**

Bath-fresh comfort and protection. Contains a full-fledged deodorant.

60¢\*



**MENNEN  
Foam Shave**

Smoother shaves with Special Menthol Formula.

79¢



**MENNEN  
4 great shave creams ...**

lather 60¢  
lather with menthol 40¢ 60¢  
brushless 35¢ 55¢  
brushless with menthol 55¢



**MENNEN AFTA**

No-sting, non-alcoholic after shave lotion ... soothes and conditions.

1.00\*



**MENNEN  
Shave Talc**

Regular or electric shave — ideal before or after ... neutral tint doesn't show.

35¢\*



**MENNEN  
Electric Pre-Shave**

For closer, cleaner shaves. Reduces shaver friction ... cools with menthol.

75¢



FOR  
CHAMPIONSHIP  
GROOMING  
EVERY DAY...

MAKE IT MENNEN  
ALL THE WAY!

Look for this world-famous line-up  
of good grooming products by

**MENNEN**

GREATEST NAME IN GOOD GROOMING SINCE 1879



# A Real Team

**T**HERE'S a reverse twist to that old sports saw—"He's a real pro"—that applies strikingly to the Giants. Of course these Giants are "real pros." Their professional competence is written boldly on the record.

At the same time, they are "real amateurs" in their approach toward football. That's a high compliment too, perhaps the highest compliment that can be paid to professional athletes.

This attitude reflects itself in a "one for all, all for one" spirit that few teams, pro or amateur, in any sport, can match. It has been as important to Giant success as the abundant mechanical skills of the team.

There are any number of examples of this rare esprit de corps but, unfortunately only enough room to cite a few of them here.

Most quarterbacks hate to "eat the ball." It's physically punishing and makes them look bad. In the team interest, Charley Conerly stands unflinchingly against opposing rushers rather than throw a risky pass to covered receivers. For a veteran like Conerly, it's also valor beyond the call of duty to block. Charley does these things and, because he does, his teammates put extra effort into blocking for him.

No Giant carried a more glowing college reputation into pro football than Kyle Rote. The Mighty Mustang from S. M. U. wore a "can't miss" label to be an outstanding pro back. Knee injuries afflicted Rote, so he was shifted to end. There, out of the spotlight, Kyle quietly has developed into a lethal blocker and an amazingly opportunistic pass catcher. His selfless adjustment to a new, less prominent role didn't pass unnoticed. The Giants elected him their offensive captain. Several teammates have further

shown their regard by naming sons after Kyle.

On any other team, Frank Gifford or Alex Webster very well might lead the league in rushing. On the Giants, they're content to share the applause. They block like fiends and decoy realistically for each other. They don't have to be urged to play, either. Gifford dragged himself out of a sick bed to have his best day of the season against the Cardinals here. Jack Mara practically had to invoke the law to keep Webster in the hospital when the Giants played the Eagles.

Selling ribbons would be too strenuous for a man with as many bumps and bruises as Em Tunnell has carried into action many a Sunday afternoon. But in ten years as a Giant, Em never has missed a game. Defensive captain Bill Svoboda and most of the other Giants are cut from the same "old Oriole" stripe.

Jack Stroud and Rosey Brown, key offensive lineman, joyfully

throw themselves into the breach as members of the Giants' special goal-line defensive unit. Walt Yowarsky of the defensive platoon did a bang-up job of filling in when the offensive line wore thin. Cliff Livingston will play anywhere.

The Giant defensive platoon isn't content with just getting the ball for the offensive unit. It blocks like fury on interceptions and has shaken Jim Patton, John Bookman and Tunnell loose for touchdown runs.

So it goes all the way down the line. Nor is it strange that the Giants are this way. Up on top, Head Coach Jim Lee Howell and his aides, Vin Lombardi, Tom Landry, Ken Kavanaugh and Johnny Dell Isolla, set the example. The Giant staff is conspicuous for its close cooperation and teamwork.

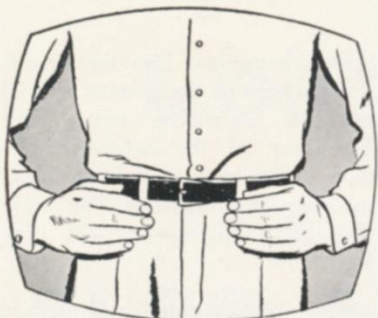
The Giants get things done together. They're a real team. That's the secret of their success.



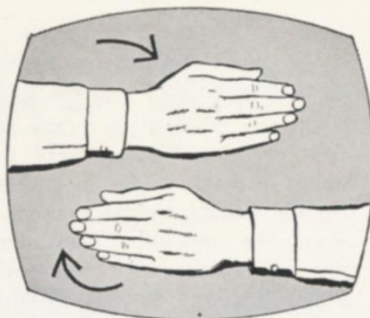
**GIANT STAFF:** Back row—Tom Landry, defensive coach; Jim Lee Howell, head coach; Ken Kavanaugh, end coach. Front row—Vin Lombardi, backfield and offensive coach; John Dell Isola, line coach.

**PLEASE USE ENTRANCE RAMP NEAREST YOUR SEAT**

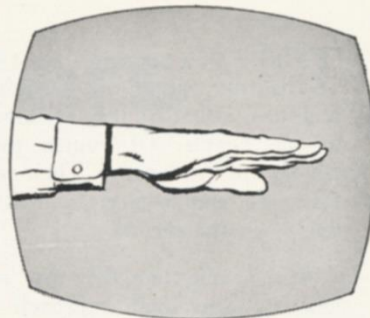
# DO YOU KNOW YOUR SIGNS?



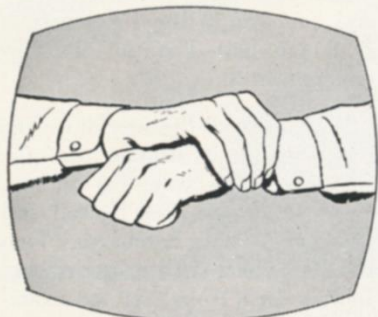
Arms akimbo signal flashed to indicate team off-side.



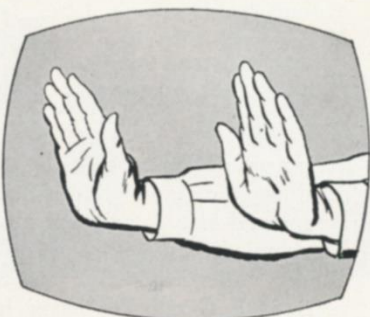
Signal used for illegal position or procedure.



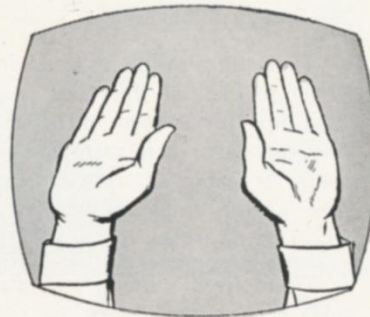
Offensive team charged with illegal motion or shift.



This signal means illegal use of hands or arms.



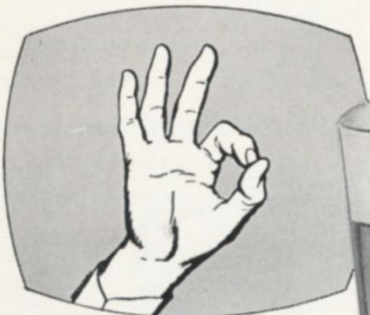
Signal for forward pass or kick catching interference.



Familiar signal for touchdown or field goal.



Team — or official — calls for time out.



Fan calls for Ballantine's famous real beer flavor — the liveliest taste in town!

Ask the man for  
**Ballantine beer**  
 YOU'LL BE SO GLAD YOU DID!



P. BALLANTINE & SONS, NEWARK, N. J.

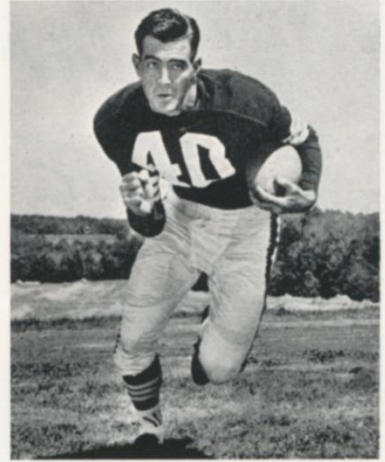
# In Two Weeks—The Browns!



**CHET HANULAK**



**JIM BROWN**



**PRESTON CARPENTER**

Pro football's game-of-the-season, matching the Giants with the Cleveland Browns, will conclude the Giants' Stadium schedule two weeks from today.

With a blend of new stars and old, the Browns have bounced back from their fourth-place finish of 1956 to the form that made them the scourge of the National League from 1950 through 1955.

Prominent in the resurgence of Coach Paul Brown's forces is one of the most celebrated athletes ever

developed in the New York metropolitan area—Jimmy Brown of Manhasset, L. I.

This 220-pound giant, a football and lacrosse All-America, a basketball star and an all-around track and field ace at Syracuse University, has breathed new fire into Cleveland's attack with his thunderous running from fullback.

With Brown supplying power and Ray Renfro, Chet Hanulak, Lew Carpenter, Billy Reynolds and Milt Campbell, the Olympic

decathlon champion, providing speed, the Browns have their most virulent running game since the days of Marion Motley and Special Delivery Jones.

Also, Tommy O'Connell's development at quarterback after a year of adjustment has restored to Cleveland's passing attack much of the devastating effectiveness it possessed during the Otto Graham era.

Don't miss this outstanding attraction!

## Last Giant Game at Stadium

GAME 6—DEC. 15

### CLEVELAND BROWNS

with

**JIMMY BROWN**

**TOMMY O'CONNELL**

**LOU GROZA**

**RAY RENFRO**

**CHET HANULAK**

**BILLY REYNOLDS**

**DARRELL BREWSTER**

**LEN FORD**

**DON COLO**

**TICKET  
PRICES:**

**\$5.00**

**BOX  
SEATS**

**\$4.00**

**RESERVED  
SEATS**

### Here's Where to Buy Tickets in Person

**YANKEE STADIUM**  
161st St. and River Ave.  
Bronx, N. Y.  
Mon.-Sat., 9-5 P.M.

**YANKEE TICKET OFFICE**  
North Mezzanine  
Grand Central Station  
Mon.-Fri., 10-6 P.M.; Sat., 10-4

OR

**DAVEGA STORES**  
Jamaica—163-24 Jamaica Avenue  
Hempstead—45 Main Street  
Newark—110 Market Street

Hackensack—325 Main Street  
White Plains—175 Main Street

### OTHER OUTLETS

**ANDY ROBUSTELLI'S SPORTS SHOPS**  
in Stamford and Cos Cob, Conn.

**ADDRESS ALL  
MAIL ORDERS TO:**

**TICKET MANAGER**  
**NEW YORK FOOTBALL GIANTS**  
10 Columbus Circle  
New York 19, N. Y.

(Add 50c for mailing and handling)

Make check or money order payable: **NEW YORK FOOTBALL GIANTS, INC.**

**Tickets Now on Sale at Advance Sale Windows in Main Lobby**

MM-M-M—  
LOVE THAT FLAVOR!



HAVE A REAL CIGARETTE—  
HAVE A Camel



Discover the difference between  
“just smoking”... and Camels!

No fads or fancy stuff in this cigarette—simply the finest taste in smoking. The exclusive Camel blend of quality tobaccos has never been equalled for *smooth* smoking. Try the good, rich flavor of Camels, the largest-selling cigarette today. They've really got it!

R. J. Reynolds Tobacco Company, Winston-Salem, N. C.

# The Fine Art of Scouting

“WHAT’S the first thing you look for when you scout another team for the Giants?” Jack Lavelle was asked the other day.

“My chief concern is the defense,” replied the super-sleuth of the Giants, whose detailed reports on the opposition have been a boon to the New Yorkers for a couple of decades.

“By concentrating on defense, you get an idea of where you can do best with your attack, which you have to figure on winning with. Also by noting the plays the other quarterback calls, you can confirm your own observations. That’s because the calls he makes undoubtedly are based on his team’s scouting reports.

“Of course, in this league, there are no bad defensive players. But some are better than others, or a man may be favoring an injury. It’s essential to planning for a scout to report these things,” Jack added.

“What about the attack? What do you look for there? You hear a lot about ‘keys’ and ‘give-aways’ . . . do you try to spot them?” the



JACK LAVELLE

inquisitor continued.

“Naturally, a scout always is on the look-out for ‘keys’ and ‘give-aways,’” said Lavelle. “But, frankly, I don’t worry too much about them. Pro players are too smart and experienced to tip their intentions in advance often. Also, I feel it can be a mistake to over-emphasize ‘keys.’

“Say, for instance, you recommend that your line-backers ‘key’ to the opposing guards, on the theory that if they pull the play will go in that direction. It’s fine in theory but it doesn’t always work that way. Furthermore, who wants a deep-thinking type as a

line-backer?

“Mainly, in scouting offense, I try to get a picture of a team’s attacking pattern. I’m not too concerned with the details of a formation or play. With minor variations that you soon get to know, most pro teams use pretty much the same stuff.

“What you like to know is where a team is most likely to run from its various formations, what are it’s favorite passes and what it tends to do in certain situations,” Jack continued.

“When you see teams play five or six times a season, as I do and record every play that is run, with the down, yardage and score noted, you get a pretty fair idea of how they prefer to operate. It’s a lot of work and takes a lot of post-game bookkeeping, but it also makes those long rides home shorter.

“Naturally, all teams vary tactics from time to time. You have to give the other side credit for planning, too. But football teams and coaches have certain basic

*(Continued on page 17)*



KEN SEARS, N. Y. Knickerbocker

## Pro Basketball Madison Square Garden

**TONIGHT (SUNDAY)**

**Knicks vs. Detroit Pistons**

First Game—7:15

NO TELEVISION

**This Tuesday**

**Knicks vs. Cincinnati**

AND

**Philadelphia vs. Syracuse**

NO TELEVISION

First Game—7 P. M.

Prices—\$4.50, \$3, \$2.50, \$2, \$1.50

Tickets on sale at Madison Square Garden box office. Mail orders promptly filled. Write Basketball Dept., Madison Square Garden, 307 W. 49th St. Add 25 cents for handling and mailing.



# Crowning achievement

**OF 100 YEARS OF CRAFTSMANSHIP !**

With craftsmanship comes perfection. In a product... and in the pleasure it delivers. Your confidence in the unchanging quality of Seagram's 7 Crown has made it the most popular whiskey of our time... the American whiskey of the century.

**Say Seagram's and be Sure**  
OF AMERICAN WHISKEY AT ITS FINEST

# Giant Gallery



*Cha. Conerly*

**Charlie Conerly (42)**, a 10-year Giant, is one of football's supreme clutch performers. The Ole Miss All-America, converted from a single-wing tailback to a T quarterback as a pro, has thrown more NFL TD passes than all but Baugh and Luckman. He had 125 going into this season. Every time Charlie uncocks his arm, he sets a new Giant passing record. Married, he farms cotton in Clarksville, Miss., off-season.



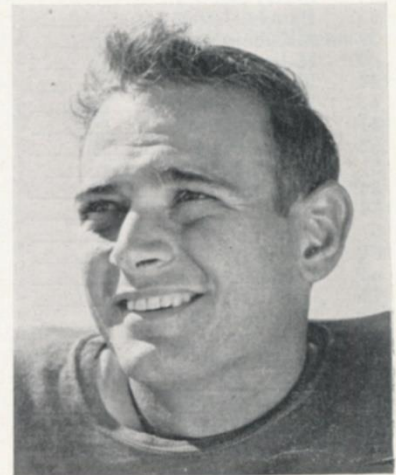
*Em Tunnell*

**Em Tunnell (45)** walked into the Giant office from off the street in 1948 to ask for a tryout. He got it and has been a Giant mainstay ever since. A far-ranging, fierce-tackling safety man, the former Iowa halfback has had years when he has gained more ground on defense than any Giant has made on offense. He's a threat any time he handles the ball on a kick return or interception. Single, Em's permanent residence is in Garret Hill, Pa.



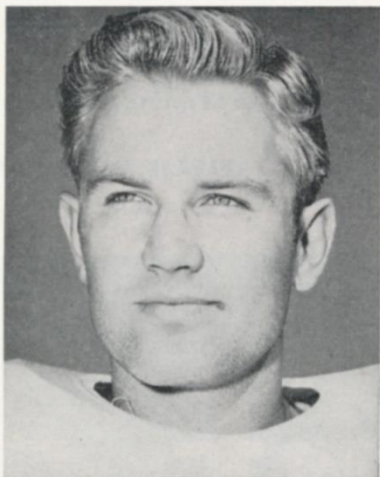
*John G Martinkovic*

**John Martinkovic (83)**, obtained from the Green Bay Packers in a pre-season deal, has provided the Giants with stalwart service as a defensive rush-liner. This big (6-3, 245) graduate of Xavier in Cincinnati keeps heavy pressure on opposing passers with his powerful charge. A 7-year pro, Big John makes his home in Green Bay, where he sells autos.



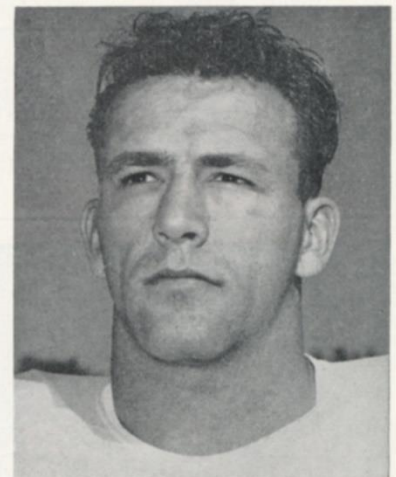
*John Bookman*

**John Bookman (22)** is one of the two rookies to win jobs with the Giants this season. Only 175 pounds but very fast, he has been a valuable addition to the defensive platoon's umbrella. As of midseason, he led the Giants in interceptions. A native of Baton Rouge, La., John attended Miami University of Florida. He's married and has an infant daughter.



*Bob Clatterback*

**Bob Clatterback (12)** hasn't seen much action in his four seasons as a Giant. However, he performs a valuable function just by being available. When the Giants need an extra quarterback, it's comforting to know there's a competent one at hand in Clatterback. The rangy Houston graduate can throw the ball as well as any one, as he has demonstrated when called upon. Bob is the father of two children.



*Cliff Livingston*

**Cliff Livingston (89)**, signed as a free agent, has been with the Giants four seasons. Fast and aggressive, he is a key member of the specialist units the Giants use for and against kick-offs, punts, field goals and extra points. He also is a versatile defensive spare, who can play end, linebacker or on the corner. A native Californian, Cliff starred for U. C. L. A.

**AUTOGRAPH COLLECTORS: "Giant Gallery" is a weekly program feature.**

**PLEASE USE ENTRANCE RAMP NEAREST YOUR SEAT**

# Forty Niners on Offense

KICK  
2:05

R. H. Owens (27)      F. B. Babb (32)      Q. B. Tittle (14)      L. H. McElhenny (39)  
 R. E. Wilson (84)      R. T. Dahms (70)      R. G. Connolly (64)      C. Morze (53)      L. G. Palatella (68)      L. T. Cross (78)      L. E. Conner (88)

# Giants on Defense

L. E. Yowarsky (78)      L. T. Modzelewski (77)      M. G. Huff (70)      R. T. Katcavage (75)      R. E. Robustelli (81)  
 L. W. Hughes (48)      L. L. B. Svoboda (30)      L. S. Tunnell (45)      R. S. Patton (20)      R. L. B. Svare (84)      R. W. Nolan (25)

## FORTY NINERS ROSTER

No.	Player	Position	Weight	Height	Age	College	Yrs. Pro
12	Brodie, John	QB	195	6:01	22	Stanford	1
14	Tittle, Y. A.	QB	195	6:00	30	Louisiana State	10
20	Stits, Bill	HB	195	6:00	25	U. C. L. A.	4
22	Arenas, Joe	HB	180	5:11	30	Omaha	7
24	Smith, J. D.	HB	200	6:01	24	North Carolina A&M	2
27	Owens, R. C.	E-HB	205	6:03	22	College of Idaho	1
32	Babb, Gene	FB	207	6:03	22	Austin	1
34	Perry, Joe	FB	210	6:00	30	Compton J. C.	10
35	Barnes, Larry	EB-LB	225	6:01	23	Colorado A&M	1
39	McElhenny, Hugh	HB	198	6:01	28	Washington	6
40	Holladay, Bobby	HB	175	5:11	24	Tulsa	2
42	Ridlon, Jim	HB	195	6:01	22	Syracuse	1
44	Walker, Val Joe	HB	178	6:01	26	Southern Methodist	5
47	Moegle, Dicky	HB	195	6:01	22	Rice	3
52	Rubke, Karl	C	235	6:04	21	U. S. C.	1
53	Morze, Frank	C-T	280	6:04	23	Boston College	1
54	Matuszak, Marv	LB	235	6:02	26	Tulsa	4
55	Hazeltine, Matt	LB	205	6:01	24	California	3
57	Carr, Paul	LB	205	6:00	25	Houston	3
64	Connolly, Ted	G	240	6:03	25	Santa Clara-Tulsa	3
68	Palatella, Lou	G	230	6:02	24	Pittsburgh	3
70	Dahms, Tom	T	250	6:05	29	San Diego State	7
72	Herchman, Bill	T	240	6:02	24	Texas Tech	2
73	Nomellini, Leo	T	255	6:03	31	Minnesota	8
74	Toneff, Bob	T	255	6:03	27	Notre Dame	5
75	Henke, Ed	E-LB	227	6:04	28	U. S. C.	5
76	Gonzaga, John	T	240	6:03	24	None	2
77	Bosley, Bruce	G-T	240	6:02	23	West Virginia	2
78	Cross, Bobby	T	250	6:04	26	Kilgore J. C.	5
79	St. Clair, Bob	T	265	6:09	26	Tulsa-U. S. F.	5
82	Soltau, Gordy	E	195	6:02	31	Minnesota	8
84	Wilson, Billy	E	190	6:04	30	San Jose State	7
85	Jessup, Bill	E-HB	195	6:01	27	U. S. C.	6
87	Powell, Charlie	E-LB	225	6:03	24	None	5
88	Conner, Clyde	E	195	6:02	23	College of Pacific	2

**GIANT SP**  
 PAT and FG—Agajani  
 Gifford  
 Punting—Chandler  
 Kick-Offs—Chandler

**OFFIC**  
 Refe  
 George Rennix ( )  
 Unp  
 Louis Palazzi (5)  
 Head Li  
 John Highberger (4)  
 Back  
 Stanley Jaworowski  
 Field  
 Norman Schacht

**FORTY-NINER**  
 PAT and FG—Soltau  
 Punting—Jessup ( )  
 Kicks-Offs—Soltau

**FORTY-NINER STAFF:** Frank Albert, Stanford, head coach; Phil Bengston, Minnesota, assistant coach; Mark Duncan, Denver, assistant coach; Howard Hickey, Arkansas, assistant coach; Bill Johnson, Tyler J. C., assistant coach; Lynn Waldorf, Syracuse, chief scout; Henry Schmidt, trainer; Chico Norton, equipment manager.

*The Official Watch for Timing Today's Game Is*

**PLEASE USE ENTRANCE RA**

Enjoy it tonight!

# Calvert



**RESERVE**

CK-OFF  
5 P.M.

## Giants on Offense

R. H. Webster (29) F. B. Triplett (33) Q. B. Conerly (42) L. H. Gifford (16)  
R. E. MacAfee (80) R. T. Yelvington (72) R. G. Stroud (66) C. Wietecha (55) L. G. Beck (61) L. T. Brown (79) L. E. Rote (44)

## Forty Niners on Defense

L. E. Henke (75) L. T. Nomellini (73) M. G. Matuszak (54) R. T. Herchman (72) R. E. Tonneff (74)  
L. W. Smith (24) L. L. B. Hazeltine (55) L. S. Holladay (41) R. S. Moegle (47) R. L. B. Powell (87) R. H. Stits (20)

### SPECIALISTS

Agajanian (8), Chandler (34), Gifford (16)  
Herchman (34), Conerly (42)  
Herchman (34), Agajanian (8)

### OFFICIALS

**Referee**  
Herchman (52), Minnesota)

**Umpire**  
Herchman (51), Penn Staa

**End Linesman**  
Herchman (48), Carnegie Tech

**Back Judge**  
Herchman (29), Georgetown

**Field Judge**  
Herchman (56), Alfred

### RESERVE SPECIALISTS

Herchman (82), Barnes (35).  
Herchman (85), Barnes (35).  
Herchman (82), Barnes (35).

## NEW YORK GIANTS ROSTER

No.	Player	Position	Weight	Height	Age	College	Yrs. Pro
8	Agajanian, Ben	E	215	6:00	38	New Mexico	9
11	Heinrich, Don	QB	180	6:00	26	Washington	4
12	Clatterbuck, Bob	QB	195	6:03	25	Houston	4
16	Gifford, Frank	B	205	6:01	27	Southern California	6
20	Patton, Jim	B	180	5:11	25	Mississippi	3
21	Crawford, Ed	B	185	6:03	23	Mississippi	1
22	Bookman, John	B	175	5:11	23	Miami (Fla.)	1
25	Nolan, Dick	B	180	6:01	25	Maryland	4
29	Webster, Alex	B	215	6:03	26	North Carolina State	3
30	Svoboda, Bill	LB	215	6:00	28	Tulane	8
33	Triplett, Mel	B	215	6:02	25	Toledo	3
34	Chandler, Don	B	205	6:02	22	Florida	2
35	Epps, Bobby	B	205	5:08	25	Pittsburgh	3
40	Filipski, Gene	B	185	5:10	26	Villanova	2
42	Conerly, Charles	QB	185	6:01	36	Mississippi	10
44	Rote, Kyle	B	205	6:00	29	Southern Methodist	7
45	Tunnell, Emlen	B	200	6:01	32	Iowa	10
48	Hughes, Ed	B	180	6:01	26	Tulsa	4
55	Wietecha, Ray	C	225	6:01	28	Northwestern	5
60	Austin, Bill	G	225	6:01	28	Oregon State	7
61	Beck, Ray	G	225	6:02	25	Georgia Tech	4
66	Stroud, Jack	G	240	6:01	28	Tennessee	5
68	Spinks, Jack	G	240	6:01	26	Alcorn A. and M.	4
70	Huff, Sam	LB	230	6:01	22	West Virginia	2
72	Yelvington, Dick	T	240	6:02	28	Georgia	6
75	Katcavage, Jim	E	230	6:03	22	Dayton	2
77	Modzelewski, Dick	T	260	6:00	26	Maryland	5
78	Yowarsky, Walt	E	235	6:02	29	Kentucky	6
79	Brown, Roosevelt	T	245	6:03	24	Morgan State	5
80	MacAfee, Ken	E	210	6:02	28	Alabama	4
81	Robustelli, Andy	E	230	6:01	29	Arnold	7
83	Martinkovic, John	E	245	6:03	30	Xavier	7
84	Sware, Harland	LB	215	6:00	26	Washington State	5
85	Schnelker, Bob	E	215	6:04	27	Bowling Green	5
89	Livingston, Cliff	E	215	6:03	27	U. C. L. A.	4

GIANTS STAFF: Jim Lee Howell, Arkansas, head coach; Vince Lombardi, Fordham, backfield coach; John Dell Isola, Fordham, line coach; Ken Kavanaugh, L. S. U., end coach; Tom Landry, Texas, defensive coach; John Johnson, Sid Moret and John Dziegiel, trainers; Dr. Francis J. Sweeny, physician; Dr. Arthur C. Croker, dentist.

Is Longines—"The World's Most Honored Watch"

RAMP NEAREST YOUR SEAT

1622 1622

**Calvert**  
RESERVE  
AMERICAN  
BLENDED WHISKEY

ESPECIALLY SELECTED FROM OUR  
CHOICEST STOCKS AND BOTTLED BY

THE CALVERT DISTILLING CO.  
BALTIMORE, MD. LOUISVILLE, KY.

Nothing finer  
in American taste

CALVERT DISTILLERS CO., N.Y.C. • AMERICAN BLENDED WHISKEY • 86.8 PROOF • 65% GRAIN NEUTRAL SPIRITS

The Marlboro Man

**MARLBORO  
BRINGS YOU  
GIANTS'  
GAMES  
ON TV...**

See your local listing  
for time and station

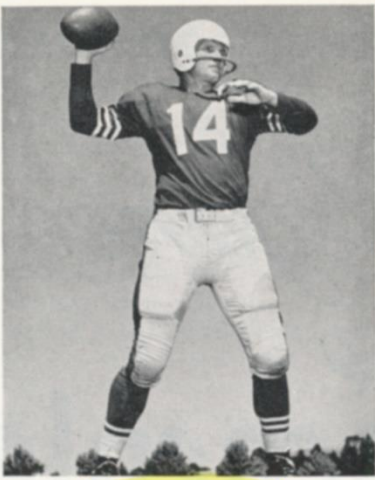
*A lot of man... a lot of cigarette*

*"He gets a lot to like—filter, flavor, flip-top box." The works.*

A filter that means business. An easy draw that's all  
flavor. And the flip-top box that ends crushed cigarettes.

(MADE IN RICHMOND, VIRGINIA, FROM A PRIZED RECIPE)





**Y. A. TITTLE**

**S**AN FRANCISCO'S Forty-Niners, paying their first visit to New York in five years, are one of professional football's most colorful aggregations.

Traditionally an attack-minded team that constantly aims for the long-gainer, the Forty-Niners strongly reflect the personality of their coach, Frankie Albert, who was as resourceful a quarterback as ever barked a signal.

Coach Albert has the tools at his disposal to play the aggressive, wide-open football he favors. It is mainly on the strength of their attack that the Forty-Niners have kept in contention for the National League's Western Conference title.

The San Francisco offense is built around two of the league's established stars—Y. A. Tittle and Hugh McElhenny.

A ten-year veteran of the pro football wars, Tittle is an Albert-type quarterback who rates as one of the most accomplished passers in the game. Unflinching under defensive fire, Y. A., which stands for Yelverton Abraham, has a completion average of better than

# About the '49ers



**JOHN BRODIE**

fifty per cent for his decade of distinguished service.

Many experts rank McElhenny, 6-1, 198 and lightning fast, as football's most dangerous open-field runner. Hurrying Hugh accounted for the NFL's longest touchdown run of 86 yards last year and perennially ranks among the leading ground-gainers.

San Francisco's offensive resources by no means end with Tittle and McElhenny. The Forty-Niners have another fine quarterback in John Brodie, the 1956 Stanford All-America. This cocky youngster is a good passer and an exceptional ball-handler. He gave the Giants fits as a member of the College All-Stars last August.

Jumping Joe Perry has slowed



**HUGH McELHENNY**

down a bit from his league-leading form of 1953-54 but still is a ball-carrying threat at fullback, where he now alternates with a powerful rookie, Gene Babb. Fleet R. C. Owens, another rookie, and the veteran Paul Jessup are skilled operatives in the slot.

Three of the best pass-catching ends in the business also figure prominently in the Forty-Niners' attacking scheme. They are Billy Wilson, twice the league's receiving champion; Clyde Conner, who was setting the pace for the circuit until injured a couple of weeks ago, and the veteran Gordy Soltau, who does the team's place-kicking.

A big, hard-blocking offensive line is anchored at center by 280-pound Frank Morze, who used to play his football for Boston College, and Bob St. Clair, 265-pound tackle.

San Francisco's rugged defensive platoon features Leo Nomellini and Bob Toneff, a couple of 255-pounders, up front and fleet Dickie Moegele and J. D. Smith in the secondary.



**R. C. OWENS**



**CLYDE CONNER**



**BOB ST. CLAIR**

**PLEASE USE ENTRANCE RAMP NEAREST YOUR SEAT**

MEN WHO KNOW THE SCORE...

*Live in Elegance*

*...enjoy* **Schenley**



## SCOUTING . . .

(Continued from page 9)

traits and habits. It's part of a scout's job to spot them," declared Lavelle.

"One last question, Jack: Where do you prefer to watch a game from?" the super-scout was asked.

"When I have anything to say about it, I like to be behind the goalposts—high," answered Jack. "From there, you can check a team's offensive spacing and catch what it is doing on defense much better.

"However, you're pretty much at the mercy of the home team's front office. Sometimes they put you in the press box, which can be good or bad; sometimes they stick you off in a corner, which you report to your front office for counter-action.

"It all boils down to the fact that a football scout, like a boy scout, must 'be prepared' for anything. Now, if you'll pardon me, I'll run through the San Francisco dossier once again," concluded Jack Lavelle.

## Jottings on the Giants

Chris Schenkel and Les Keiter were kept busy on the air last Sunday from Chicago with recitals of distinguished Giant performances. "That's Agajanian's seventy-third consecutive extra point," said Chris (No. 74, 75 and 76 came later). "That's Conerly's 131st touchdown pass as a Giant," observed Les (Charley subsequently added No. 132). "That's Tunnell's seventieth pass interception, adding to his league record," Chris and Les both chimed (Em went on to get steals No. 71 and 72).

"If you have to blow my first name, try to make it something interesting — like Pierre," growled Dick Yelvington the other day. This department, which has a blind spot on first names, called Dick Tom a couple of programs ago. By any name, the big blond from Georgia throws a mean block—and a mean look to anyone who doesn't use his proper handle. Among today's spectators are Pepsi-Cola bottlers from ten foreign nations: Germany, Honduras, Iran, Iraq, Lebanon, Martinique, Mexico, Puerto Rico, Spain and Venezuela. Most of them will be

seeing their first game of American football . . . For a team that was supposed to be deficient on attack, those Browns are doing pretty well, with three NFL statistical pace-setters: Jimmy Brown, rushing; Tommy O'Connell, passing, and Lou Groza, tied for the lead in scoring.

Supplying the between-halves entertainment today will be Morgan State College Band of Baltimore. This fine musical and marching unit is directed by R. Hayes Strider. The Morgan State delegation will have a real rooting interest in the game. Roosevelt Brown, the Giants' crack offensive tackle, is a graduate of the college and also a member of its faculty between football seasons.

For the last time, the Giant office in the Coliseum Tower, 10 Columbus Circle, is not open on Saturdays. To buy Giant tickets on Saturdays, go to Yankee Stadium, the Yankee ticket office in Grand Central Station, the Davega stores in Newark, Hackensack, Jamaica, Hempstead and White Plains and Andy Robustelli's sports shops in Stamford and Cos Cob.

**GULF OIL - BALLANTINE BEER - BEN-GAY**

**BOWERY SAVINGS BANK**

**Present**

**THE GIANTS**

**ON**

**WINS**

**1010 on Your Radio Dial**

**All Home and Away Games**



**PLAY-BY-PLAY BY LES KEITER**

# Touchdown!



KING-SIZE  
**FILTER**  
**KOOL**  
the cigarette with the  
**SNOW-FRESH FILTER**

Blocked by the hot cigarette habit? You can break that habit with refreshing Filter Kool. Kools taste *clean* and *fresh* and *light* . . . the *snow-fresh* filter makes the menthol right! So, put yourself on the winning team, the KOOL team! Break the hot cigarette habit with refreshing Filter Kool! Buy a carton today!

# Giant Blackboard

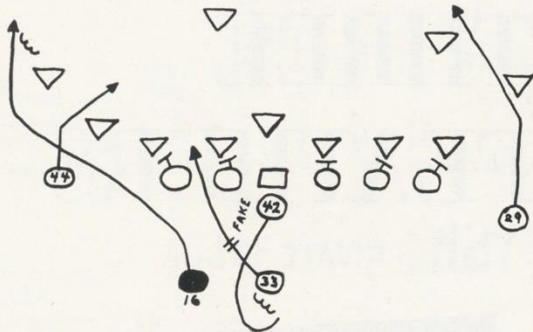
TODAY we'll talk a bit in general terms about the Giant passing attack and then describe in detail the effective pattern diagrammed below.

In the Giant attacking scheme under Coach Jim Lee Howell, the pass is regarded as an auxiliary weapon. That is not to say that the Giants don't take advantage of every opportunity to pass and don't often move the ball better through the air than on the ground.

But their primary aim is to establish their running game. When that objective is accomplished, it's not only easier but also much less hazardous to pass.

In line with this thinking, most Giant pass plays generate from faked runs that make it risky for the defensive line-backers to drop back to aid in the coverage of receivers.

The Giant pass patterns designed by Ken Kavanaugh, end coach, have one of two objectives: 1) to isolate a defender, so the receiver, who has the advantage of holding the initiative, can operate on



him, man-against-man; 2) to saturate one defensive zone with two or more receivers.

In the pattern diagrammed here, the zone saturation principle is used. The play develops out of "balanced right" formation, with Webster (29), the right halfback, flanked to the right and Rote (44), the left end, flanked to the left.

On taking the snap, Conerly (42) spins back to the left, rakes a hand-off to Triplett (33), who drives toward the line, as on a trap-buck, then retreats to passing position behind a protective cordon of blockers.

Rote, from his flanker spot, heads at the defensive right corner-man. Gifford (16), flaring out from left halfback, also aims at the corner-man, who thereby is put in a squeeze.

When Rote makes his cut to the inside and Gifford breaks downfield, one or the other is likely to be open, at least momentarily. Of course, the outside right line-backer will have attempted to check Rote at the line of scrimmage and the right safely will rush over to support the corner-man.

But the high-speed crossing of the receivers makes this a hard play to cover, particularly with fast, elusive men like Rote and Gifford running the pattern. Conerly has hit the mark time and again from this set-up. In the diagrammed play, the ball goes to Gifford.

## Greatest thing that's happened to men...since women!



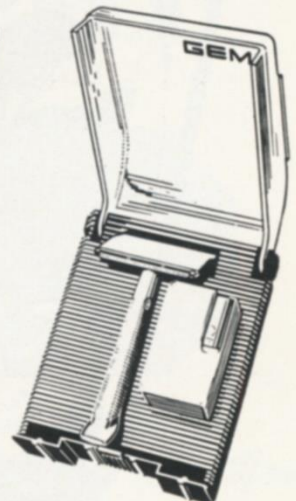
IT'S THE HEAVY, ALL-METAL NEW GEM RAZOR WITH FLAT-TOP DESIGN THAT HUGS YOUR CHEEK



AND ALWAYS HOLDS THE BLADE AT THE PERFECT ANGLE FOR A CLOSE, CLEAN SHAVE WITHOUT IRRITATION!

# NEW GEM

## RAZOR WITH FLAT-TOP DESIGN



ONLY \$1.00 WITH DISPENSER OF GEM BLADES AND TRAVEL CASE



**STANDS**

**OUT** in any crowd!

Finest whiskey  
of all the blends!

**THREE  
FEATHERS**

VSR PRIVATE STOCK

**QUARTS REDUCED!**  
**SAVE 91¢**  
 NOW **\$4.99**  
*Greatest whiskey buy  
 in New York  
 and New Jersey!*

**GIANT LEADERS**

Rushing.....	Gifford: 122-471 yds.
Passing.....	Conerly: 87 of 165
Receiving.....	Gifford: 24-371 yds.
Scoring.....	Agajanian: 49 pts.
Punting.....	Chandler: 45.2 yd. avg.
Punt Returns.....	Filipski: 19-91 yds.
Kick-Off Returns	Filipski: 17-399 yds.
Interceptions.....	Tunnell: 5-71 yds.

BLENDED WHISKEY • 86 PROOF • 65% GRAIN NEUTRAL SPIRITS  
 THREE FEATHERS DISTILLING CO., LAWRENCEBURG, INDIANA

# 1957 Giant Statistics

## TEAM RECORD

GIANTS	Opp.	GIANTS	Opp.
76 1st downs rush.	57	214 Yds., interceptions	144
67 1st downs pass.	47	47 No. of punts	49
13 1st downs pen.	18	45.2 Punting avg.	—
156 Total 1st downs	122	36 Punts returned	28
1405 Net yds. rush.	1159	142 Yds. punt ret.	242
1429 Net yds. pass.	1035	26 Kick-offs returned	31
19 Yds. lost, att. pass.	134	605 Yds. kick-off ret.	721
365 Rushing attempts	274	57 Penalties	35
182 Passing attempts	194	527 Yds. penalized	317
96 Passes completed	78	20 Fumbles	25
14 Passes int. by	7	11 Opp. fumbles recov.	12

## INDIVIDUAL RECORDS

### RUSHING

	Att.	Yds.	L.G.	Avg.
Gifford	122	471	23	3.8
Webster	101	380	34	3.8
Epps	54	257	55	4.8
Triplett	49	170	16	3.5
Filipski	21	90	11	4.4
Conerly	10	32	13	3.2
Chandler	1	4	4	4.0
Heinrich	1	1	1	1.0
Clatter'k	3	0	0	0.0

### RECEIVING

	No.	Yds.	TDs.	L.G.
Gifford	24	371	1	63
Webster	20	216	1	41
Rote	19	257	3	33
Schnel'r	16	357	5	70
MacAfee	8	147	2	41
Epps	7	71	0	7
Triplett	1	12	0	12
Filipski	1	7	0	7

### PASSING

	Att.	Comp.	Int.	Yds.	L.G.	TDs.	Pct.
Conerly	165	87	7	1225	70	9	.527
Heinrich	9	3	0	41	28	0	.333
Gifford	6	4	0	143	66	2	.667
Clatterbuck	2	2	0	39	29	1	1.000

### SCORING

	TD-R	TD-P	TDs.	PAT.	FG.	Pts.
Agajanian	0	0	0	25-25	16-8	49
Gifford	4	1	5	0	0	30
Schnelker	0	5	5	0	0	30
Webster	3	1	4	0	0	24
Rote	0	3	3	0	0	18
MacAfee	0	2	2	0	0	12
Bookman	1	0	0	0	0	6
Conerly	1	0	0	0	0	6
Heinrich	1	0	0	0	0	6
Huff	1	0	0	0	0	6
Patton	1	0	0	0	0	6
Tunnell	1	0	0	0	0	6

### PUNT RETURNS

	No.	Yds.	L.G.
Filipski	19	88	17
Tunnell	8	44	23
Patton	8	16	7

### INTERCEPTIONS

	No.	Yds.	L.G.
Tunnell	5	71	52
Bookman	3	54	31
Patton	2	51	51
Svare	1	21	21
Nolan	1	12	12
Huff	1	6	6
Svoboda	1	0	0

### KICK-OFF RETURNS

	No.	Yds.	L.G.
Filipski	17	401	41
Patton	8	193	33
Crawford	1	11	11

### PUNTING

	No.	Avg.	Lgst.
Chandler	47	45.2	61

### Giant Picture Pack

Attention, Giant fans! Here's a collector's item for you. For just one dollar, you can get a complete set of Giant player pictures—autographed, 5 by 7 inch, glossy prints of all the stars and their thumbnail biographies. You can obtain this picture pack from Stadium vendors or at Stadium souvenir stands. Or send \$1 to Giant Pictures, P. O. Box 119, Brooklyn 1, N. Y.

# builds you up — **FAST**



The Knowing New Yorker flexes his money muscles with a *Chemical Savings Account*. Your cash grows fast. It's multiplied by 3% interest, compounded and credited every three months. Savings build security and let you enjoy the good life. Start saving today. All other banking services here, too.

See phone book for office  
nearest you

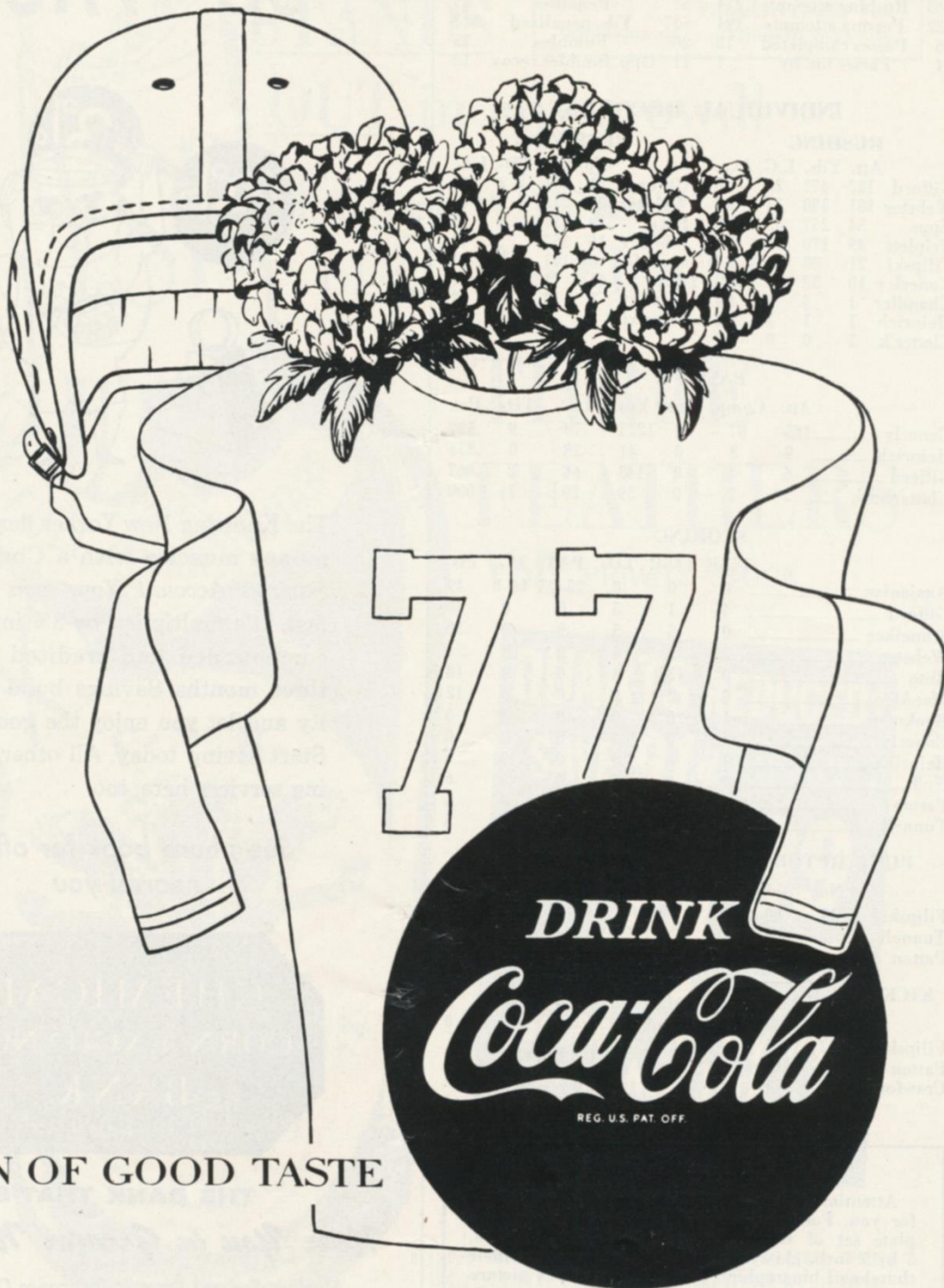


THE BANK THAT'S

*Near You in Greater New York*

Member Federal Deposit Insurance Corporation

# All-America favorite ... ice-cold Coke



SIGN OF GOOD TASTE

"Coke" is a registered trade-mark.

# NATIONAL LEAGUE OFFICIALS' SIGNALS



Offside



Crawling, Pushing,  
Helping Runner



Illegal Motion



Illegal Pass



Unsportsmanlike  
Conduct



Pass Interference



Holding, Illegal  
Use of Hands



Personal Foul  
(indication of  
offense follows)



Delay of Game,  
Excess Time-Out



Touchdown, Field  
Goal, Extra Point



Safety



Loss of Down



Penalty Declined,  
Incomplete Pass,  
Missed Goal



First Down



Dead Ball



No Time-Out or  
Time In with Whistle



Time-Out

**THIRSTY?**  
have a  
**Knicker**

Satisfy Your  
beer thirst better



**Knickerbocker**

New York's Famous Beer

Ruppert Knickerbocker Beer, Jacob Ruppert, N. Y. C.

# This Week's League Pairings

Home Team		Visiting Team	
NEW YORK		SAN FRANCISCO	
Won 7, Lost 2		Won 5, Lost 4	
3—Cleveland (a) .....	6	10—Chicago Cards .....	20
24—Philadelphia (a) .....	20	23—Los Angeles .....	20
24—Washington (a) .....	20	21—Chicago Bears (a) .....	17
35—Pittsburgh .....	0	24—Green Bay (a) .....	14
14—Washington .....	31	21—Chicago Bears .....	17
31—Green Bay (a) .....	17	35—Detroit .....	31
27—Chicago Cards .....	14	24—Los Angeles (a) .....	37
13—Philadelphia .....	0	10—Detroit (a) .....	31
28—Chicago Cards (a) .....	21	21—Baltimore (a) .....	27
—San Francisco .....		—New York (a) .....	
—Pittsburgh (a) .....		—Baltimore .....	
—Cleveland .....		—Green Bay .....	
199	129	189	214

Home Team		Visiting Team	
BALTIMORE		LOS ANGELES	
Won 6, Lost 3		Won 4, Lost 5	
34—Detroit .....	14	17—Philadelphia .....	13
21—Chicago Bears .....	10	20—San Francisco (a) .....	23
45—Green Bay (a) .....	17	7—Detroit (a) .....	10
27—Detroit (a) .....	31	26—Chicago Bears (a) .....	34
21—Green Bay .....	24	35—Detroit .....	17
13—Pittsburgh .....	19	10—Chicago Bears .....	16
21—Washington (a) .....	17	37—San Francisco .....	24
29—Chicago Bears (a) .....	14	31—Green Bay (a) .....	27
27—San Francisco .....	21	31—Cleveland (a) .....	45
—Los Angeles .....		—Baltimore (a) .....	
—San Francisco (a) .....		—Green Bay .....	
—Los Angeles (a) .....		—Baltimore .....	
238	167	214	209

CLEVELAND		CHICAGO CARDS	
Won 7, Lost 1, Tied 1		Won 2, Lost 6	
6—New York .....	3	20—San Francisco (a) .....	10
23—Pittsburgh (a) .....	12	14—Washington .....	37
24—Philadelphia .....	7	20—Pittsburgh (a) .....	29
7—Philadelphia (a) .....	17	44—Washington (a) .....	14
17—Chicago Cards (a) .....	7	7—Cleveland .....	17
21—Washington .....	17	21—Philadelphia .....	38
24—Pittsburgh .....	0	14—New York (a) .....	27
30—Washington (a) .....	30	21—New York .....	28
45—Los Angeles .....	31	—Cleveland (a) .....	
—Chicago Cards .....		—Chicago Bears .....	
—Detroit (a) .....		—Philadelphia (a) .....	
—New York (a) .....		—Pittsburgh .....	
197	124	161	200

CHICAGO BEARS		WASHINGTON	
Won 4, Lost 5		Won 2, Lost 6, Tied 1	
17—Green Bay (a) .....	21	7—Pittsburgh (a) .....	28
10—Baltimore (a) .....	21	37—Chicago Cards (a) .....	14
17—San Francisco .....	21	20—New York .....	24
34—Los Angeles .....	26	14—Chicago Cards .....	44
17—San Francisco (a) .....	21	31—New York (a) .....	14
16—Los Angeles (a) .....	10	17—Cleveland (a) .....	21
21—Green Bay .....	14	17—Baltimore .....	21
14—Baltimore .....	29	30—Cleveland .....	30
27—Detroit (a) .....	7	12—Philadelphia (a) .....	21
—Washington .....		—Chicago Bears (a) .....	
—Chicago Cards (a) .....		—Philadelphia .....	
—Detroit .....		—Pittsburgh .....	
173	170	185	217

PHILADELPHIA		PITTSBURGH	
Won 3, Lost 6		Won 4, Lost 4	
13—Los Angeles (a) .....	17	28—Washington .....	7
20—New York .....	24	12—Cleveland .....	23
7—Cleveland (a) .....	24	29—Chicago Cards .....	20
17—Cleveland .....	7	0—New York (a) .....	35
0—Pittsburgh (a) .....	6	6—Philadelphia .....	0
38—Chicago Cards (a) .....	21	19—Baltimore (a) .....	13
16—Detroit .....	27	0—Cleveland (a) .....	24
0—New York (a) .....	13	10—Green Bay .....	27
21—Washington .....	12	—Philadelphia (a) .....	
—Pittsburgh .....		—New York .....	
—Washington (a) .....		—Washington (a) .....	
—Chicago Cards .....		—Chicago Cards (a) .....	
132	151	104	149

DETROIT		GREEN BAY	
Won 5, Lost 4		Won 3, Lost 6	
14—Baltimore (a) .....	34	21—Chicago Bears .....	17
24—Green Bay (a) .....	14	14—Detroit .....	24
10—Los Angeles .....	7	17—Baltimore .....	45
31—Baltimore .....	27	14—San Francisco .....	24
17—Los Angeles (a) .....	35	24—Baltimore (a) .....	21
31—San Francisco (a) .....	35	17—New York .....	31
27—Philadelphia (a) .....	16	14—Chicago Bears (a) .....	21
31—San Francisco .....	10	27—Los Angeles .....	31
7—Chicago Bears .....	27	27—Pittsburgh (a) .....	10
—Green Bay .....		—Detroit (a) .....	
—Cleveland .....		—Los Angeles (a) .....	
—Chicago Bears (a) .....		—San Francisco (a) .....	
192	205	175	224

## NATIONAL LEAGUE LEADERS

RUSHING	
1. Brown, Cleveland .....	161 for 769 yds.
2. Cesares, Bears .....	155 for 572 yds.
3. Wilson, Los Angeles .....	114 for 559 yds.
PASSING	
1. O'Connell, Cleveland .....	58 of 98 for 1027 yds.
2. LeBaron, Washington .....	76 of 178 for 1187 yds.
3. Unitas, Baltimore .....	117 of 205 for 1760 yds.
RECEIVING	
1. Wilson, San Francisco .....	38 for 555 yds.
2. McLaren, Pittsburgh .....	36 for 467 yds.
3. Doran, Detroit .....	31 for 604 yds.
SCORING	
1. Baker, Washington .....	59 pts.
1. Blanda, Bears .....	59 pts.
1. Groza, Cleveland .....	59 pts.

## NATIONAL LEAGUE STANDINGS

EASTERN CONFERENCE					Points	
	W.	L.	T.	Pct.	For	Agst.
Cleveland .....	7	1	1	.875	197	124
NEW YORK .....	7	2	0	.778	199	129
Pittsburgh .....	4	4	0	.500	104	149
Philadelphia .....	3	6	0	.333	132	151
Chicago Cards .....	2	6	0	.250	161	200
Washington .....	2	6	1	.250	185	217
WESTERN CONFERENCE					Points	
	W.	L.	T.	Pct.	For	Agst.
Baltimore .....	6	3	0	.667	238	167
San Francisco .....	5	4	0	.556	189	214
Detroit .....	5	4	0	.556	192	205
Los Angeles .....	4	5	0	.444	214	209
Chicago Bears .....	4	5	0	.444	173	170
Green Bay .....	3	6	0	.333	175	224

PLEASE USE ENTRANCE RAMP NEAREST YOUR SEAT

# SITTING PRETTY



*"My master  
prefers  
Melrose"*

If pleasure is your goal, put Melrose Rare in your drink and you'll really be sitting pretty with "the very best"! What makes Melrose so Rare? It's mellowed with superb whiskies seven years old...*more, older, finer* whiskies than any leading blend!

There's nothing to compare with

# MELROSE

RARE



## NATIONAL LEAGUE LEADERS

Rushing.....	Brown, Cleveland.....	161 for 769 yds.
Passing.....	O'Connell, Cleveland.....	58 of 93 for 1027 yds.
Receiving.....	Wilson, San Francisco.....	38 for 555 yds.
Scoring.....	{ Baker, Washington Blanda, Bears Groza, Cleveland }	59 pts.
Punting.....	Chandler, Giants.....	45.2 yd.-avg.
Punt Returns.....	Zagers, Washington.....	11 for 202 yds.
Kick-Off Returns.....	McIlhenny, Green Bay.....	9 for 261 yds.
Interceptions.....	Butler, Pittsburgh.....	9 for 70 yds.



# Live Modern

Free up! Get more out of life...  
get more out of smoking!



Light into that  
**Live Modern** flavor!

Smoke today's most exciting cigarette... L&M!  
Only L&M gives you "Live Modern" flavor... the full,  
exciting flavor that means more taste... more aroma!  
Every L&M pack ever made has carried this state-  
ment: "A blend of premium quality cigarette tobaccos  
including special aromatic types."

**L&M lets you pick the pack that suits you best!**



©1957  
Liggett  
& Myers  
Tobacco Co.

HANDY PACKS (King and Reg.)

CRUSH-PROOF BOX (Costs no more)