

YANKEE STADIUM

OFFICIAL PROGRAM • 50 CENTS



N.Y.

**GIANTS**

VS.

PHILADELPHIA

**EAGLES**

NOVEMBER 30, 1958



Pick  
your  
pleasure

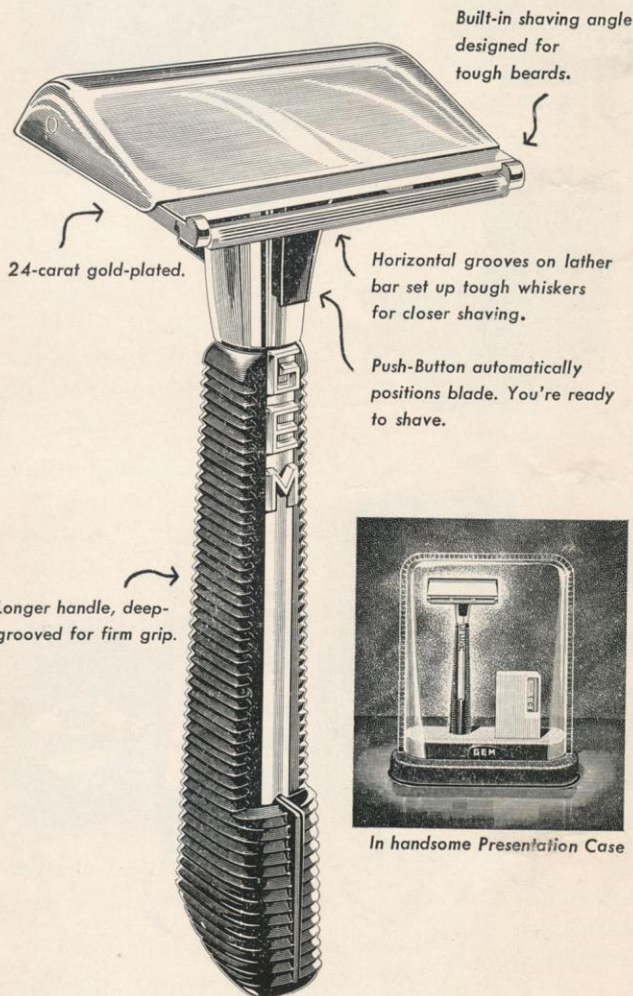
**PHILIP MORRIS INC.**

*The Quality House*



Marlboro pack or box • Philip Morris pack or box • Parliament pack or box • Benson & Hedges cigarette case box

# GEM INTRODUCES *PUSH-BUTTON* RAZOR FOR MEN WITH TOUGH BEARDS



Built-in shaving angle designed for tough beards.

24-carat gold-plated.

Horizontal grooves on lather bar set up tough whiskers for closer shaving.

Push-Button automatically positions blade. You're ready to shave.

Longer handle, deep-grooved for firm grip.




In handsome Presentation Case

There's never been a razor like the new Gem Push-Button Razor. Teamed up with extra-heavy, extra-sharp Gem Blades, it's the most powerful combination in history for shaving tough beards. Get tough with your tough beard—get the new Gem Push-Button Razor in the handsome Presentation Case today.

Avoid '5 o'clock shadow' with Gem.

Handsome Presentation Case contains Gem Push-Button Razor and Blades in Dispenser . . .

**\$1.00**

PRECISION  PRODUCTS

## OFFICIAL PROGRAM NEW YORK



## vs. PHILADELPHIA EAGLES

YANKEE STADIUM • Nov. 30, 1958

Volume 33

Number 5

### CONTENTS

Keep Rolling, Giants! .....	3
Giant Profile: Alex Webster .....	5
Giant Album .....	7 and 13
Next, the Browns! .....	9
Jottings on the Giants .....	11
Giants' 1958 Statistics .....	15
Eagles' Roster and Line-up .....	16
Giants' Roster and Line-up .....	17
Looking Over the Eagles .....	19
Yankee Stadium Services .....	21
Eagle Stars .....	23
Giant-Eagle Series .....	25
N. F. L. Officials' Signals .....	27
Giant Blackboard: Swing Pass .....	29
N. F. L. Statistical Leaders—1943-57 .....	31
This Week's N. F. L. Pairings, Team Records .....	32
N. F. L. Standings, Leaders .....	32

### NEW YORK FOOTBALL GIANTS

John V. Mara ..... *President-Treasurer*  
Wellington T. Mara ..... *Secretary*  
Raymond J. Walsh ..... *General Manager*

Jim Lee Howell ..... *Head Coach*  
Vince Lombardi ..... *Offensive Coach*  
Tom Landry ..... *Defensive Coach*  
John Dell-Isola ..... *Line Coach*  
Ken Kavanaugh ..... *End Coach*

John Johnson, Sid Moret and John Dziegiel ..... *Trainers*  
Dr. Francis Sweeny ..... *Physician*  
Dr. Arthur Croker ..... *Dentist*

Robert Daley ..... *Publicity Director*

This book published by  
HARRY M. STEVENS, Inc.  
320 Fifth Avenue  
New York 1, N. Y.

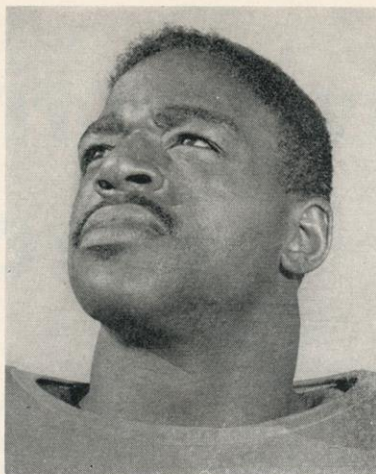


# The "All-American" Team

The brands all America selects  
for its smoking pleasure



**JACK STROUD**



**ROOSEVELT BROWN**

*It was nice to see them back.*

## *Keep Rolling, Giants*

**O**UR inspirational message of the last program was answered. "Get back to work," we told the Giants. They responded by beating the Redskins, 30-0, pitching their first shutout of the season.

By winning, our boys kept hot on the trail of the Cleveland Browns for the National League's Eastern Division title. With three games left for each team, the Giants trail the Browns by one game in the standings.

By beating the Eagles here today, which does not figure to be an easy task, and then bearding the Lions in their Detroit den a week from today, which could be even a tougher chore, the Giants can retain a shot at the title.

Cleveland's games before the Browns' visit to the Stadium on Dec. 14 are with Washington in Cleveland today and with the Eagles in Philadelphia next Sunday.

It's wishful thinking to hope that the Browns will lose either of these contests and equally wishful thinking to expect the Giants to win today and next Sunday. However, as Sunday after Sunday demonstrates, the National Foot-

ball League path is strewn with booby traps.

Between today and the Dec. 14 showdown, the Giants can win one or two games or lose one or two. Ditto the Browns. That's not even taking ties into consideration.

Just at a guess, though, we suspect the teams will match records in their next two starts. That would produce a dormie situation, bringing the Browns to the Stadium one game in front with one to play.

Under such circumstances, the Giants, by defeating the Browns, could tie for the divisional title and there would be a play-off. Naturally, we'd prefer to win outright but this has been such an exciting season that no one would seriously object to an extra game.

The Giants gave a highly encouraging performance against Washington. While they probably were not as good as the 30-0 score indicated, they showed a much closer resemblance to the real Giants who beat the Browns and Colts than the impostors who wore Giant uniforms in the Pittsburgh debacle of the previous Sunday.

It was nice to see the defensive

platoon close ranks solidly again. It was even nicer to see the offensive platoon take charge, after some early indecisiveness, and click off 95 and 54 yards to touchdowns in two of the season's most impressive sustained marches.

We're still waiting, and so, we know, is Coach Jim Lee Howell, to see the Giants come up to a kick-off at full offensive strength. There's a chance that may happen today. Roosevelt Brown and Jack Stroud, whose blocking in the line means so much to the attack, weren't visibly reinjured.

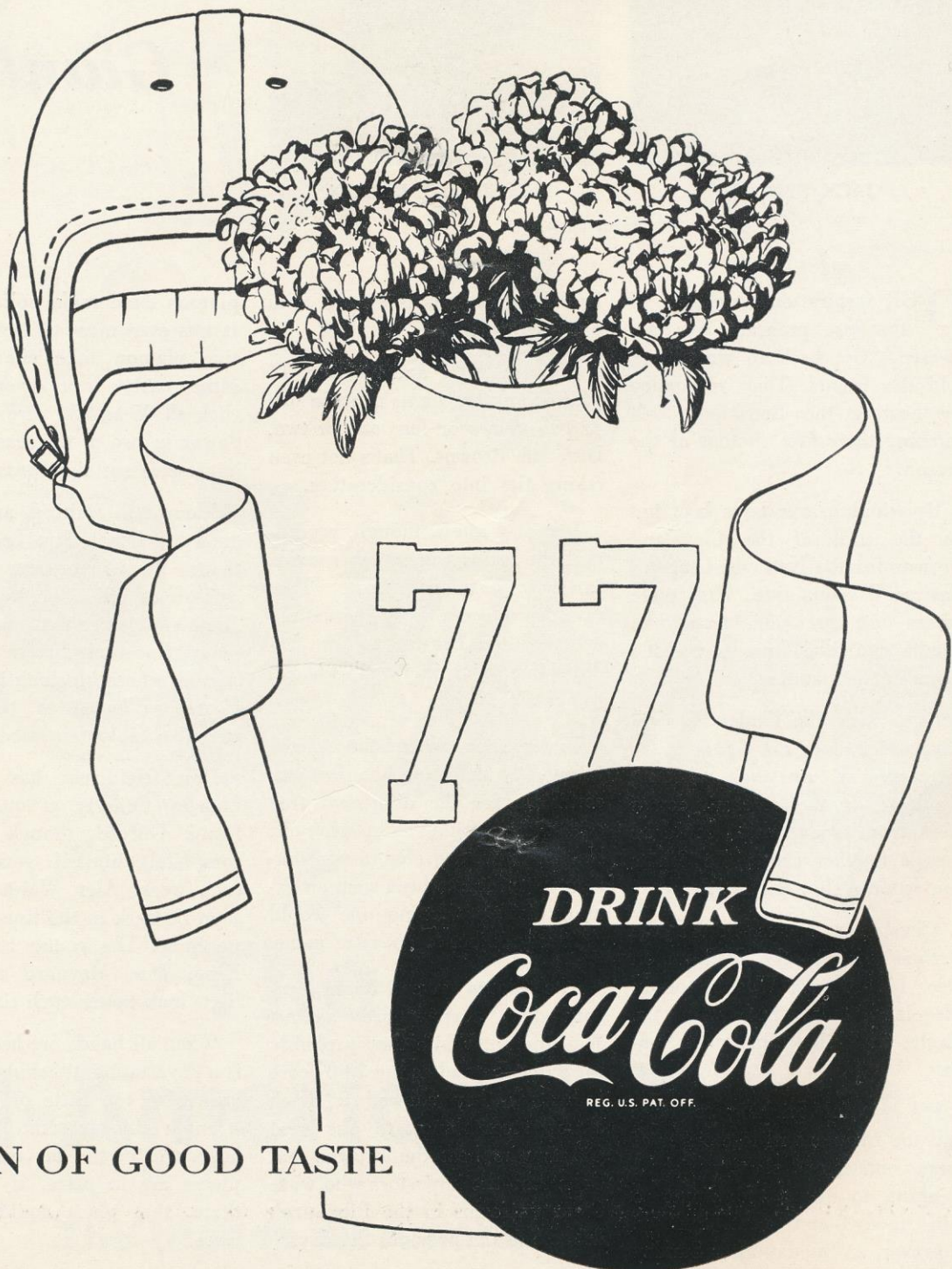
Don Heinrich has rejoined Charley Conerly at quarterback. Frank Gifford, though still not completely himself, gets stronger each week. Alex Webster should soon be back in the line-up, today we hope. The young backs, Phil King, Don Maynard and Billy Lott, look better each time out.

When all hands are healthy, this is a devastating attacking unit. We have seen too little of it at full strength this season. Today, we hope, will be the day when all the pieces are in place. If they stay there, that place could be first place.

Keep rolling, Giants!

**PLEASE USE ENTRANCE RAMP NEAREST YOUR SEAT**

# All-America favorite ... ice-cold Coke



SIGN OF GOOD TASTE

"Coke" is a registered trade-mark.

# Alex Webster: Giant of the Day

*The Crasher From Kearny  
Is at His Best When  
the Going Is Hard*

TODAY is Alex Webster Day at Yankee Stadium. Some 500 of Alex's friends from East Brunswick, N. J., are on hand to honor the big Giant halfback in half-time ceremonies.

Though only in his fourth season as a Giant, the 27-year-old Webster is the fourth best ground-gainer in Giant history, having rushed for more than 2,000 yards at a 4.1-yard average. Only Eddie Price in six seasons, Tuffy Lee-mans in eight, and Frank Gifford in seven outrank him, and only Gifford has a better average per try, at 4.4.

Since joining the Giants, Webster has been the heavy-duty runner called on to make the clutch play on third down, and has scored more touchdowns from inside the 5-yard line than any other back. He has been reliable, hits hard and fights for the extra yard needed so desperately in those situations.

Though not especially fast, Alex is called the team's best broken field runner by Giant coaches and has made more long gainers than any other back. As a rookie he made runs of 71, 53, 48 and 41 yards; weighed in with 55, 43 and 34 yarders in '56; 41 and 34 yarders in '57 and has 54 and 37 yarders already in '58.

Webster was born and brought up in Kearny, N. J., and was an All-State high school back in 1949. At that time, he was already working part time to support a widowed mother and did not have the



ALEX WEBSTER

*Not a Particularly Fast  
Runner but He Has the  
Breakaway Knack*

ceded he didn't have enough speed and cut him from the team.

Alex was married then, was still helping his mother, and his wife was about to have a baby. Desperate for a job, he wired Peahead Walker, coach of the Montreal Alouettes: "I have just been cut by the Redskins. I am in good shape and if you are looking for a halfback, can give you recommendations from my coaches."

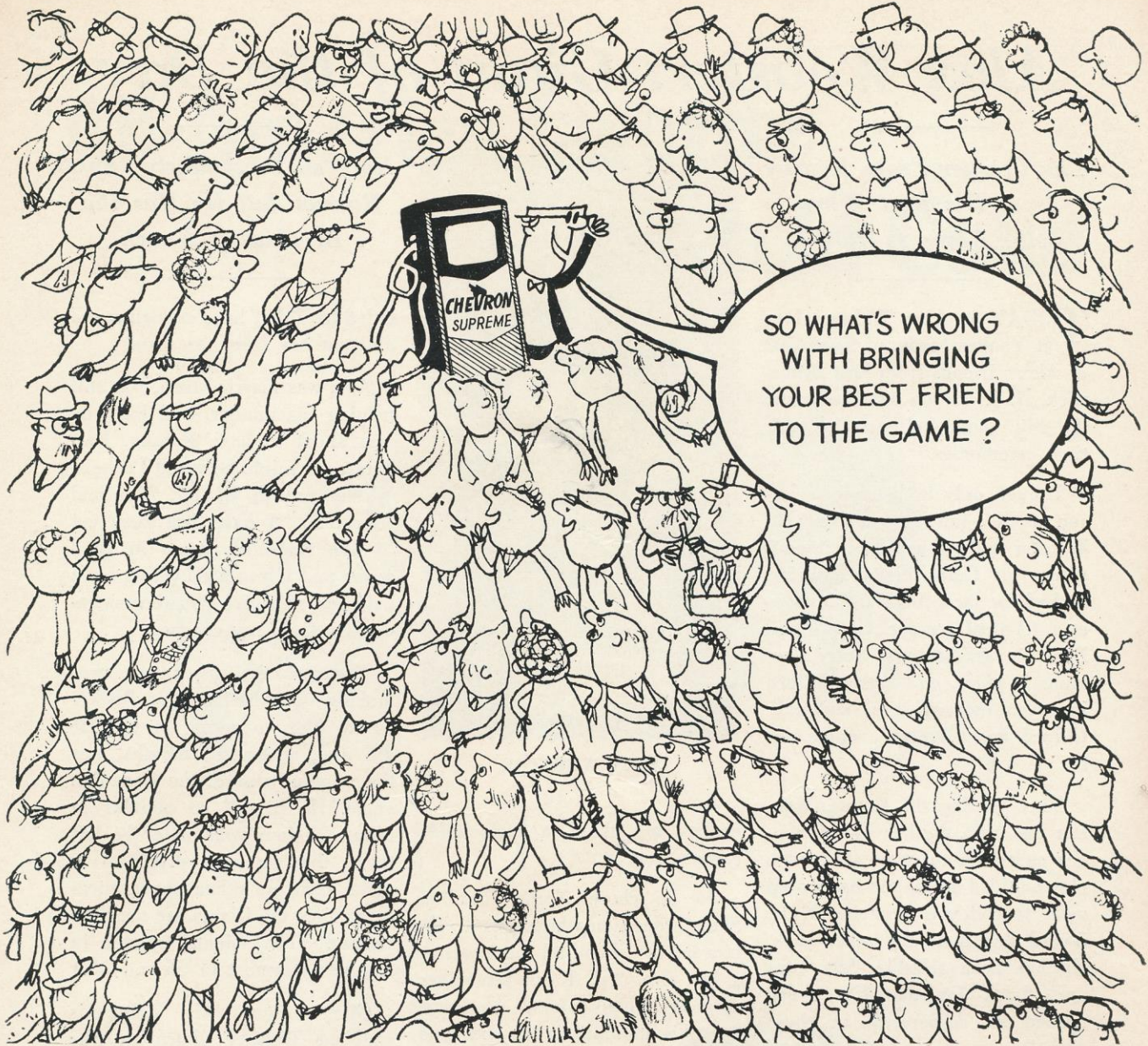
Montreal, it turned out, was looking for a halfback, so Walker wired Alex to come on up. He did and, within 18 months, was the reigning star of the Canadian game. He is still so popular in Montreal, four years after he left there, that he must drive up to make talks or other appearances every time the Giants are near the border. (The Giants trained in northern Vermont in '56 and '57.)

Giant scout Al DeRogatis watched Webster churn up the Canadian League in '54, and advised Jim Lee Howell to get Alex if possible. Since Webster had been a Giant fan all his life, the switch was arranged. In his second season he scored two touchdowns and made a 55-yard run to beat the Bears in the world championship play-off.

Two years ago he moved to East Brunswick, N. J., where he lives in a split level house with his wife, Louise, and their two youngsters. Now his friends are honoring him. In so doing, they also are honoring themselves. Alex is a Giant in every sense of the word.



PLEASE USE ENTRANCE RAMP NEAREST YOUR SEAT



It's certainly O.K. with *us*, Hy Finn! Matter of fact, *most* of the American Motorists who've tried new CHEVRON Supreme Gasoline feel that way. So if *you* haven't discovered this outstanding super-premium gasoline yet, don't wait any longer. Make friends with CHEVRON Supreme and its great teammate, RPM Supreme Motor Oil, *yourself* – at any CALSO Station.

PRODUCTS OF THE CALIFORNIA OIL COMPANY



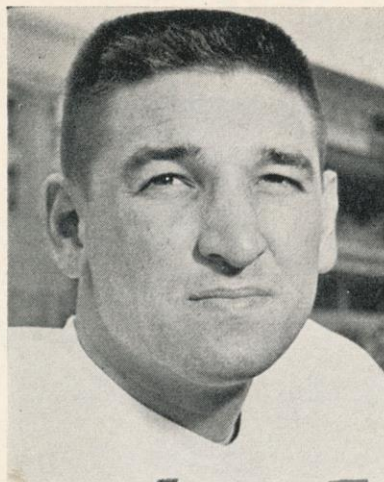
**CHEVRON**  
**SUPREME GASOLINE**  
*At all CALSO stations!*



TM'S "CHEVRON," "RPM," CHEVRON DESIGN®

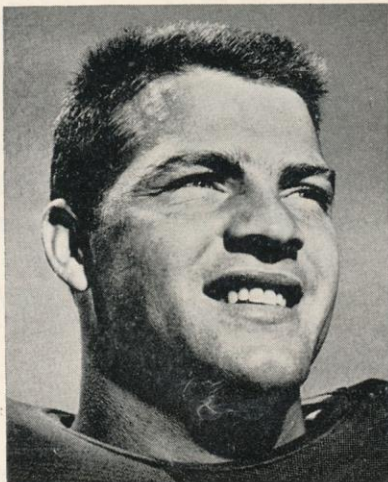


# Giant Album



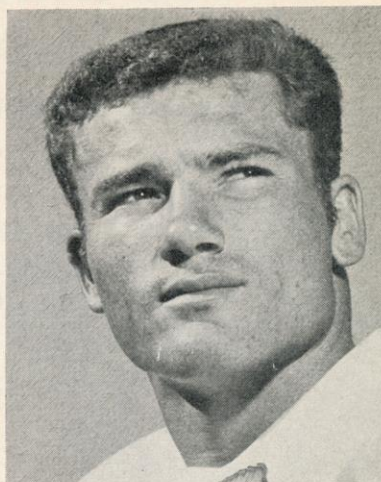
*Philip King*

The Giants appear to have made no mistake in naming **Phil King (24)** as their No. 1 choice in last winter's draft. This big (6-4 and 225) boy from Vanderbilt is a ripping runner from either halfback or fullback and also is a gifted pass-receiver. "Part Indian but all football player," Phil is nicknamed "The Chief."



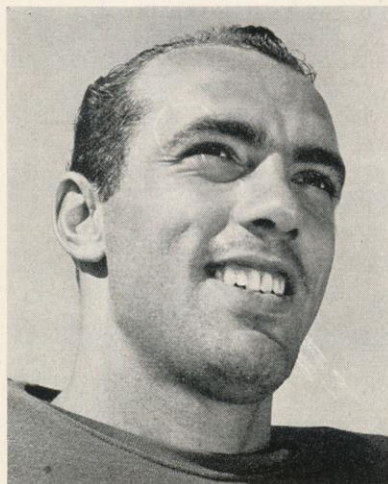
*Frank Gifford*

**Frank Gifford (16)** is back for his seventh season with the Giants after a period of doubt as to whether he'd quit football to pursue exclusively his budding career in Hollywood. Backs don't come any better than the ruggedly handsome USC alumnus. No. 1 draft choice of the Giants in 1952, he has been their No. 1 all-around player ever since.



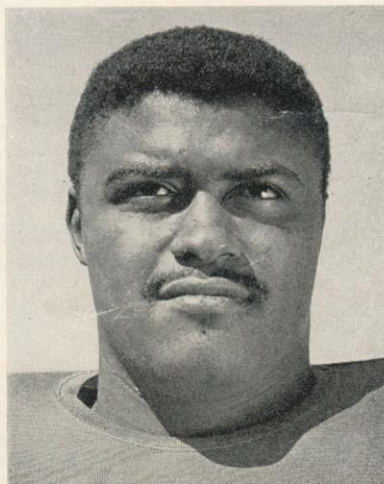
*Don Maynard*

**Don Maynard (13)**, drafted No. 9 in 1957 as a future prospect, is making the Giant handicappers look good. A 9.6-second sprinter and champion hurdler at Texas Western, he has speed to burn and uses it to advantage as a ball-carrier, pass-receiver and kick-returner. Superstitious in reverse, he wears No. 13 by request.



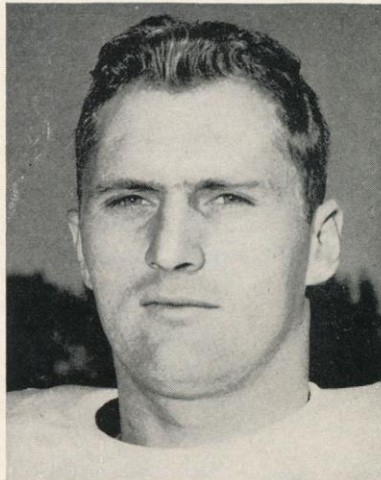
*Don Chandler*

**Don Chandler (34)** led the NFL punting with a 44.6-yard average as a Giant sophomore last year after having finished among the leaders with a 41.9-yard average as a rookie. The Florida alumnus, a No. 5 draft choice in 1955 after winning the collegiate punting title, also is a long-distance place-kicker. More than just a specialist, Don sees some backfield service, too.



*Rosy Grier*

A spectacular performer for the Giants in 1955-56, **Roosevelt Grier (76)** is back in harness after a year in the Army. A 270-pounder who is as fast and nimble as many halfbacks, Rosy is one of the most destructive tackles in the business. A Penn State graduate, he hails from Linden, N. J.



*Ken MacAfee*

**Ken MacAfee (80)**, signed as a free agent while serving in the Marine Corps, joined the Giants in 1954 and promptly nailed down a job as an offensive end. One of the fastest runners on the squad, the rangy Alabaman not only is a fine deep receiver but also does a solid job of blocking. Through 1957 he had caught 65 passes for 1021 yards and 15 TDs.

**AUTOGRAPH COLLECTORS: Giant Album is a weekly feature  
PLEASE USE ENTRANCE RAMP NEAREST YOUR SEAT**

# Guess which drink is better for you?

## Fizzless highball



**1.** Big feature, easy to make. Turn the tap, fill the glass. No longer socially acceptable, lacking in good taste.



**2.** What happened to the flavor of the liquor? A lifeless, bland drink.



**3.** Flat'er than a pancake! Wishy-washy... Your very best bet... start afresh.



**4.** Sparkling mixers save you money and trouble. Every drink tastes great... better for you too.

## Sparkling highball



**1.** Big feature... delectable taste. Costs more than tap water... but worth 5 times as much... Why?



**2.** Makes a lively drink every time. Makes any liquor taste terrific!



**3.** The drink comes alive with flavor. Money saving... You bet! Why?



**4.** No wasted drinks... no disappointed drinkers. You're traveling first class with Canada Dry Mixers.

**Research says: "Highballs with sparkling mixers are better for you"**

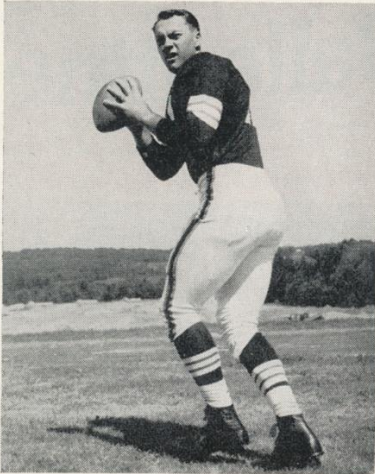
### Here's why—It's the lively bubbles!

- 1.** They speed the liquid through your system 80% faster than plain water.
- 2.** They aid your digestion.
- 3.** They curb unpleasant aftereffects.

Only Canada Dry Mixers have exclusive "Pin-Point Carbonation"—livelier, longer-lasting bubbles. Also superior flavor, from secret formulas, improve the taste of any liquor.



# Next, the Browns!



MILT PLUM



JIM BROWN



BOB MITCHELL

The next and last scheduled Giant home game will bring the big, bad Browns to the Stadium for what should be one of the memorable contests of the 1958 National Football League season. The date—Dec. 14—two weeks from today.

Jim Lee Howell's lad accomplished one of the crowning upsets of Giant history by knocking off the presumably invincible Browns, 21-17, in Cleveland a few weeks back. It was the first defeat of the

season for the Browns and put them into a slight state of shock.

The shock has disappeared but the bitter feeling of chagrin remains and it is no exaggeration to say that the Browns will come here for the return match in a vengeful mood.

With jolting Jimmy Brown, bolting Bobby Mitchell, menacing Milt Plum, puissant Preston Carpenter and larruping Lou Groza in their cast, a vengeful Brown team is rather terrifying to contemplate.

However, this Giant team is not one to back off from a challenge. In fact, it seems to thrive on challenges, when they come from a respected source.

So if the Browns are vengeful, you can be assured that the Giants will be equally determined to keep them that way.

Without belaboring the point any further, what better recipe is there for tasty football fare? See you Dec. 14.

## Football Giants — 1959 Season Subscription

**I**N late February or March the Giants 1959 Season Ticket Brochure will be available for mailing. If you wish to receive one, just fill in and mail the blank appearing on this page.

*(Please note that this Brochure is for the use of new applicants. If you are presently a season subscriber your reservation for the same seats you had this year is automatically renewed and no action on your part is required.)*

The advantages of season subscription are many. You reserve for yourself the same seats for every regular season or post season game the Giants play in the Stadium. The location is the closest you can possibly get to your own preference allowing, of course, for similar tastes of prior subscribers. You solve all your ticket problems at once and can avoid the last minute rushes and the pressures of trying to get "anything at all" when the big games develop. For business purposes or your own personal pleasure there is no greater buy in entertainment.

While you are here today we suggest that you take a look around. If you want upper or mezzanine reserved seats on the Giants side consider sections 34 or 14. There are vacancies there. Yardage on the Giants side? Yes in the lower stand there are some fine vacancies in both box and reserved seats as there are in the lower stand across the field in sections 29 or 31.

For you who must have the upper or mezzanine we refer you to sections such as 25, 23, 21, or 19 for reserved seats. For upper or mezzanine boxes we recommend the sections which look directly up the field from the end zone as the best available locations.

Our brochure will give complete season subscription information. But the first step is to fill out and mail the accompanying blank. We will be very happy to send you the brochure when it comes off the presses later this winter.

New York Football Giants, Inc.  
10 Columbus Circle  
New York 19, New York

Gentlemen:

Please send me your 1959 Season Ticket Brochure when it is ready for mailing:

Name .....

Address .....

City & Zone.....State.....

**This blank for use of new applicants. 1958 Season reservations are automatically renewed.**

**SEASON TICKETS — YOUR BEST BUY IN ENTERTAINMENT**



Hey, getcha cold beer  
Hey getcha **Ballantine!**



® Is a Reg. T. M. of P. Ballantine & Sons, Newark, N. J.

the 'crisp'  
refresher



Now...largest-selling beer in the East!

# Jottings on the Giants

WIN, lose or draw today, Coach Jim Lee Howell, his staff and all the Giants will be honored tonight at the annual dinner of the Section Five Club at the Hotel Concourse Plaza. For Senator Howell, it will be a reunion. A lot of his old Giant teammates of the 1936-40 era will be on hand—among them Tuffy Leemans, Hank Soar, Leland Shaffer, Johnny Gildea and Stan Galazin. . . . It's not too late to join this notable party. Just show up—with money—and you'll be welcome.

The Bergenfield High School Band of Bergenfield, N. J., directed by Bernard Baggs, will entertain between the halves of today's game. This talented marching and musical group, like the others who have been at the Stadium this season, puts on a rousing show. Please let these youngsters know you appreciate their efforts on your behalf!

This is Alex Webster's "Day." More than 500 East Brunswick, N. J., friends and neighbors of the great Giant halfback will pay trib-

ute to him. It's a motion that all Giant fans warmly second. Alex has provided so many fine days of performance for the Giants that it's about time the debt was repaid. . . . Another "day" is coming up two weeks hence, when the Giants meet the Browns. This one is for Em Tunnell, another worthy recipient of tribute from the stands. At room 228, 60 East 42nd

Street, they'll tell you what you can do to help give Em his due.

Charley Conerly, for his passing and play-calling, and Harland Svare, for his opportunistic ball-hawking, received the Longines - Wittenauer Watch Company awards for outstanding offensive and defensive performance against the Redskins last Sunday. . . . We'd like to call your attention again, and this time we think we've got the time correct, to the "Giant Radio Huddle," a hit football show that CBS puts on the airwaves each Thursday night at 10:05 P.M.

A number of the personable young gentlemen who play football for the Giants are available for off-season employment. If you act quickly enough, you may be able to sign up a willing worker who's ready to tackle any job and pursue the most difficult problem relentlessly by calling the Giant office, JUDson 2-7272. At the same number, you can establish a beachhold on your season tickets for 1959. In both cases, the supply is limited. Act now.

**Fly!**

as a  
**NAVAL OFFICER**

... in today's supersonic Navy. College men can now qualify for unmatched flight training under two different officer programs—NAVCAO or Aviation Officer Candidate. Earn "Wings of Gold" and a coveted officer's commission.

**NAVY**

Visit your local Office of Naval Officer Procurement.



## HOTEL MANHATTAN

HEADQUARTERS FOR  
PROFESSIONAL TEAMS  
IN NEW YORK CITY

New York's newest . . . Hotel Manhattan offers 1400 air-conditioned guest rooms, each with television and radio. Known as the "Home of Champions", this magnificent skyscraper hotel is ideally located in the heart of Times Square. Meet your friends at the Manhattan Bar or the new Playbill Room open daily for luncheon, dinner and supper.

Express Subway Trains Speed You to  
Yankee Stadium from the Private  
Subway Entrance of Hotel Manhattan

**FRANK W. KRIDEL**  
Executive Vice President and General Manager



HOTEL  
*Manhattan*  
44TH TO 45TH STREETS  
AT EIGHTH AVENUE • JUDson 2-0300



I'VE ALWAYS TOLD  
YOU, DOBERMAN, THE  
BEST TOBACCO MAKES  
THE BEST SMOKE!

BUT SARGE,  
THAT WAS  
MY LAST CAMEL  
YA TOOK!

Have a real cigarette -  
**CAMEL**



**CAMELS** taste so rich and smoke so mild  
they outsell every other brand today!

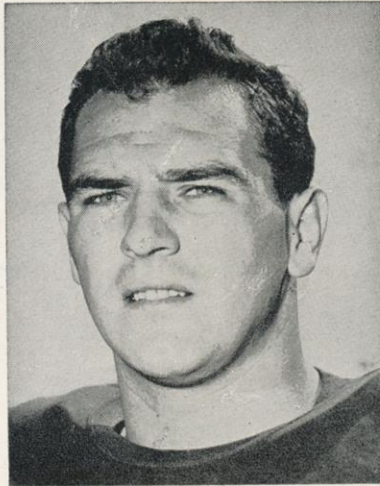
Watch Phil Silvers as Sgt. Bilko (with Pvt. Doberman) on "The Phil Silvers Show" CBS-TV

# Giant Album



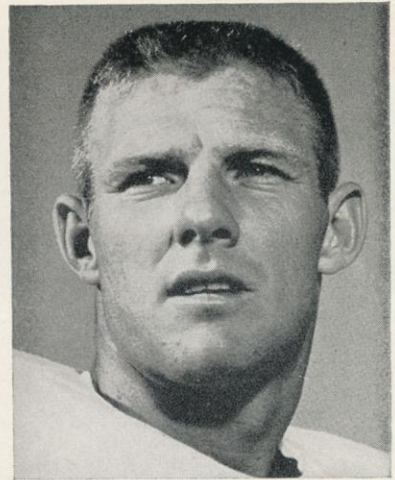
*Al Barry*

**Al Barry (68)**, obtained from the Packers in a pre-season trade, has done a splendid job for the Giants at guard, a position dogged by injuries this year. This is the 235-pound USC graduate's third pro season. He was drafted by Green Bay in '53 but stayed an extra year in college and put in a service hitch before joining them.



*Ray Wietecha*

**Ray Wietecha (55)**, who played half a dozen positions well for the Giants as a rookie in 1953, was installed as offensive center the following year and has since been a fixture there ever since. The Giants rate him as the best pivotman in the NFL. At Northwestern, Ray also was an outstanding baseball player.



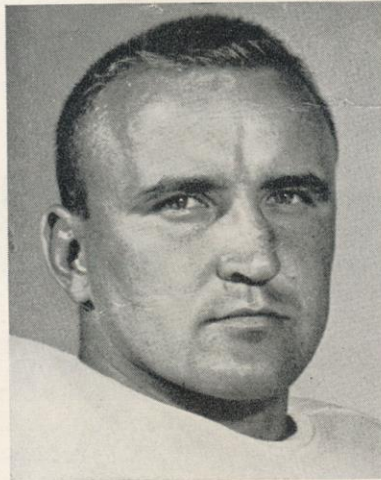
*Billy Lott*

**Billy Lott (22)**. This fleet, nifty 195-pound halfback, a No. 6 choice in last winter's draft, has been showing rare rookie poise on both offense and defense. Hailing from Ole Miss doesn't hurt Billy's chances. That's the school that started Charley Conerly, Jim Patton and the various Pooles on the road to Giant glory.



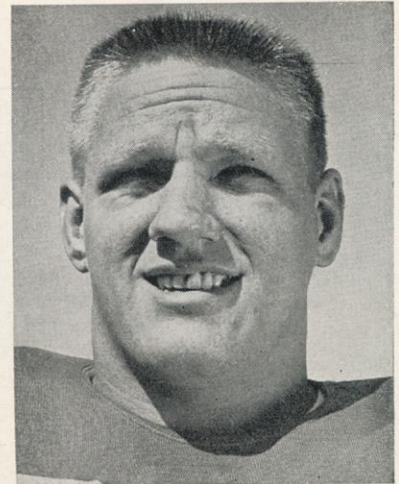
*Ed Hughes*

**Ed Hughes (48)**, who played his college football for the U. of Tulsa, joined the Giants in 1956 after having put in a couple of seasons with the Los Angeles Rams. Fast afoot and a sure tackler who has the knack of being in the right place at the right time, he has been a valuable addition to the defensive secondary.



*Bob Mischak*

**Bob Mischak (62)**, a crack end for Army a few years back, has bobbed up as an offensive guard with the Giants and looks like a good one. A first-year pro but technically not a rookie since he trained briefly with the Browns in 1957 after finishing his service hitch. Has good speed and, at 230 pounds, the power to make his blocks stick.



*Jim Katcavage*

At Dayton University, **Jim Katcavage (75)** did not have much chance to capture the spotlight. But Giant scouts had him tabbed as a great prospect. A No. 4 draft choice in 1956, he was a key rushliner on the championship team of that year. A rugged 230-pounder who likes to mix it, he does a capable job anywhere up front, on defense or offense.

**AUTOGRAPH COLLECTORS:** *Giant Album* is a weekly feature

**PLEASE USE ENTRANCE RAMP NEAREST YOUR SEAT**

## Eagles on Offense

R. H. RETZLAFF (44)	F. B. PEAKS (26)	Q. B. VAN BROCKLIN (11)	L. H. BARNES (33)
R. E. BIELSKI (36)	R. T. SNYDER (79)	R. G. HUXHOLD (63)	C. BEDNARIK (60)
		L. G. BRADLEY (65)	L. T. JACOBS (67)
			L. E. WALSTON (83)

## Giants on Defense

L. E. KATCAVAGE (75)	L. T. MODZELEWSKI (77)	M. L. B. HUFF (70)	R. T. GRIER (76)	R. E. ROBUSTELLI (81)
L. W. HUGHES (48)	L. L. B. SVOBODA (30)	L. S. CROW (41)	R. S. PATTON (20)	R. L. B. SVARE (84)
				R. W. KARILIVACZ (21)

## PHILADELPHIA EAGLES ROSTER

No.	Player	Position	Weight	Height	Age	College	Yrs. Pro
9	Jurgensen, Sonny	QB	200	5:11	24	Duke	2
11	Van Brocklin, Norm	QB	202	6:01	32	Oregon	10
22	Riley, Lee	HB	190	6:00	26	Detroit	3
25	McDonald, Tom	E-HB	182	5:10	24	Oklahoma	2
26	Peaks, Clarence	FB	218	6:01	23	Michigan State	2
27	Wells, Billy	HB	178	5:09 1/2	26	Michigan State	4
33	Barnes, Bill	HB	202	5:11	23	Wake Forest	2
36	Bielski, Dick	E-FB	218	6:01 1/2	26	Maryland	4
40	Brookshier, Tom	HB	198	6:01	26	Colorado	4
41	Norton, Jerry	HB	195	5:11	27	Southern Methodist	5
42	Hudson, Bob	LB	230	6:04	28	Clemson	7
43	Kowalczyk, Walt	HB	205	6:00	23	Michigan State	1
44	Retzlaff, Pete	E-HB	209	6:01	27	South Dakota State	3
46	Myers, Brad	HB	195 1/2	6:01	29	Bucknell	3
53	Pellegrini, Bob	C-LB	225	6:02	23	Maryland	2
60	Bednarik, Chuck	C-LB	235	6:03	33	Pennsylvania	10
61	Louderback, Tom	G	234	6:02	25	San Jose State	1
63	Huxhold, Ken	G	235	6:01 1/2	29	Wisconsin	5
64	Laack, Galen	G	230	6:00	26	C. O. P.	1
65	Bradley, Harold	G	230	6:02	27	Iowa	5
66	Meadows, Ed	E-LB	225	6:02	26	Duke	5
67	Jacobs, Proverb	T	255	6:04	23	California	1
68	Koman, Bill	LB	235	6:02	24	North Carolina	3
70	Owens, Don	T	250	6:05	26	Mississippi Southern	2
72	Richardson, Jess	T	272	6:03	28	Alabama	6
73	Khayat, Ed	T	225	6:04	23	Tulane	2
74	Szafaryn, Len	T	230	6:03	30	North Carolina	8
76	Peters, Volney	T	245	6:04	29	Southern California	7
78	Campbell, Marlon	T	255	6:03	29	Georgia	5
79	Snyder, Lum	T	230	6:05	28	Georgia Tech	5
81	Bell, Eddie	E-HB	212	6:01	27	Pennsylvania	4
82	Scott, Tom	E	220	6:02	28	Virginia	6
83	Walston, Bobby	E	191	6:00	29	Georgia	8
86	Cooke, Ed	E	238	6:04	23	Maryland	1

### GIANT SPEC

PAT and FG—S...  
Chandler  
Punting—Chandler (3)  
Kick-Offs—Sum...  
Chandler

### OFFICIAL

Refere...  
Robert Austin (44),  
Umpir...  
Joseph Connell (5)

### Head Line

Samuel Cooperman (4)

### Back Ju

John A. Glascott (7)

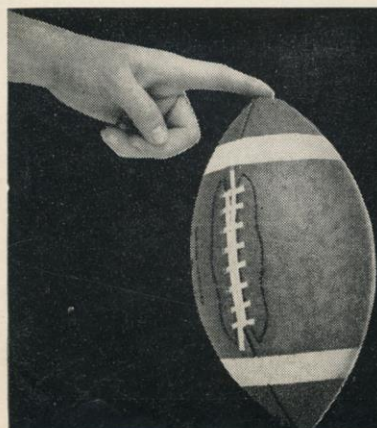
### Field Ju

Michael Lisetski (16)

### EAGLE SPEC

PAT and FG—Walston  
Punting—Van Brocklin  
Kick-Offs—Bielski (36)

PLEASE USE ENTRANCE RAM



Here's to the winning point!  
**CLEAR HEADS AGREE**



**KICK-OFF  
2:05 P.M.**

**Q. B.**  
VAN BROCKLIN (11)

**L. H.**  
BARNES (33)

**R. H.**  
WEBSTER (29)

**F. B.**  
TRIPLETT (33)

**L. G.**  
BRADLEY (65)

**L. T.**  
JACOBS (67)

**L. E.**  
WALSTON (83)

**R. E.**  
SCHNELKER (85)

**R. T.**  
STROUD (66)

**R. G.**  
MISCHAK (62)

WIE

**R. T.**  
GRIER (76)

**R. E.**  
ROBUSTELLI (81)

**L. E.**  
COOKE (86)

**L. T.**  
RICHARDSON (72)

PELLI

**R. S.**  
NORTON (20)

**R. L. B.**  
SVARE (84)

**R. W.**  
KARILIVACZ (21)

**L. W.**  
BELL (81)

**L. L. B.**  
SCOTT (82)

**L. S.**  
NORTON (41)

**MASTER**

College	Yrs. Pro
Duke	2
Oregon	10
Detroit	3
Oklahoma	2
Michigan State	2
Michigan State	4
Wake Forest	2
Maryland	4
Colorado	4
Southern Methodist	5
Clemson	7
Michigan State	1
South Dakota State	3
Bucknell	3
Maryland	2
Pennsylvania	10
San Jose State	1
Wisconsin	5
C. O. P.	1
Iowa	5
Duke	5
California	1
North Carolina	3
Mississippi Southern	2
Alabama	6
Tulane	2
North Carolina	8
Southern California	7
Georgia	5
Georgia Tech	5
Pennsylvania	4
Virginia	6
Georgia	8
Maryland	1

**GIANT SPECIALISTS**

PAT and FG—Summerall (88),  
Chandler (34).  
Punting—Chandler (34), Conerly (42).  
Kick-Offs—Summerall (88),  
Chandler (34).

**OFFICIALS**

**Referee**

Robert Austin (44), St. Ambrose

**Umpire**

Joseph Connell (57), Pittsburgh

**Head Linesman**

Samuel Copperman (45), Muhlenberg

**Back Judge**

John A. Glascott (7), Pennsylvania

**Field Judge**

Michael Lisetski (16), Muhlenberg

**EAGLE SPECIALISTS**

PAT and FG—Walston (83), Bielski (36).  
Punting—Van Brocklin (11), Norton (41).  
Kick-Offs—Bielski (36), Bednarik (60).

**NEW**

No.	Player
11	Heinrich, Don
13	Maynard, Don
16	Gifford, Frank
20	Patton, Jim
21	Karilivacz, Carl
22	Lott, Billy
24	King, Phil
29	Webster, Alex
30	Svoboda, Bill
33	Triplett, Mel
34	Chandler, Don
41	Crow, Lindon
42	Conerly, Charley
44	Rote, Kyle
45	Tunnell, Emlen
48	Hughes, Ed
55	Wietecha, Ray
60	Guy, Melwood
61	Jelacic, Jon
62	Mischak, Bob
66	Stroud, Jack
68	Barry, Al
70	Huff, Sam
71	Brackett, M. L.
72	Youso, Frank
75	Katcavage, Jim
76	Grier, Roosevelt
77	Modzelewski, Dick
79	Brown, Roosevelt
80	MacAfee, Ken
81	Robustelli, Andy
84	Svare, Harland
85	Schnelker, Bob
88	Summerall, Pat
89	Livingston, Cliff

PLEASE USE ENTRANCE RAMP NEAREST YOUR SEAT

...s to the winning point!  
**...R HEADS AGREE**

**Calvert** IS B  
RESERVE

WITH THE

OFF  
P.M.

**Giants on Offense**

R. H. WEBSTER (29)      F. B. TRIPLETT (33)      Q. B. HEINRICH (11)      L. H. GIFFORD (16)  
 R. E. SCHNELKER (85)      R. T. STROUD (66)      R. G. MISCHAK (62)      C. WIETecha (55)      L. G. BARRY (68)      L. T. BROWN (79)      L. E. ROTE (44)

**Eagles on Defense**

L. E. COOKE (86)      L. T. RICHARDSON (72)      M. L. B. PELLEGRINI (53)      R. T. OWENS (70)      R. E. CAMPBELL (78)  
 L. W. BELL (81)      L. L. B. SCOTT (82)      L. S. NORTON (41)      R. S. RILEY (22)      R. L. B. KOMAN (68)      R. W. BROOKSHIER (40)

**SPECIALISTS**

Summerall (88),  
 er (34).  
 (34), Conerly (42).  
 Summerall (88),  
 er (34).

**ICIALS**

eree  
 (4), St. Ambrose  
 pire  
 (57), Pittsburgh

**inesman**

n (45), Muhlenberg

**Judge**

(7), Pennsylvania

**Judge**

(16), Muhlenberg

**SPECIALISTS**

tan (83), Bielski (36).  
 lih (11), Norton (41).  
 (36), Bednarik (60).

**NEW YORK GIANTS ROSTER**

No.	Player	Position	Weight	Height	Age	College	Yrs. Pro
11	Heinrich, Don	QB	180	6:00	27	Washington	5
13	Maynard, Don	HB	178	6:00	22	Texas Western	1
16	Gifford, Frank	HB	205	6:01	28	Southern California	7
20	Patton, Jim	HB	180	5:10	26	Mississippi	4
21	Karilivacz, Carl	HB	190	6:01	27	Syracuse	6
22	Lott, Billy	HB	195	6:00	23	Mississippi	1
24	King, Phil	FB	225	6:04	22	Vanderbilt	1
29	Webster, Alex	HB	210	6:03	27	North Carolina State	4
30	Svoboda, Bill	LB	215	6:00	29	Tulane	9
33	Triplet, Mel	FB	215	6:01	26	Toledo	4
34	Chandler, Don	HB	205	6:02	23	Florida	3
41	Crow, Lindon	HB	200	6:01	25	Southern California	4
42	Conerly, Charley	QB	185	6:01	37	Mississippi	11
44	Rote, Kyle	E	205	6:00	30	Southern Methodist	8
45	Tunnell, Emlen	HB	200	6:01	33	Iowa	11
48	Hughes, Ed	HB	180	6:01	28	Tulsa	4
55	Wietecha, Ray	C	225	6:01	29	Northwestern	6
60	Guy, Melwood	G-T	248	6:03	23	Duke	1
61	Jelacic, Jon	G-E	230	6:03	22	Minnesota	1
62	Mischak, Bob	G	230	6:00	25	Army	1
66	Stroud, Jack	G	235	6:01	29	Tennessee	6
68	Barry, Al	G	230	6:02	26	Southern California	3
70	Huff, Sam	G	230	6:01	23	West Virginia	3
71	Brackett, M. L.	T	250	6:05	25	Auburn	3
72	Youso, Frank	T	260	6:04	22	Minnesota	1
75	Katcavage, Jim	T	230	6:03	23	Dayton	3
76	Grier, Roosevelt	T	270	6:05	25	Penn State	3
77	Modzelewski, Dick	T	260	6:00	27	Maryland	6
79	Brown, Roosevelt	T	245	6:03	25	Morgan State	6
80	MacAfee, Ken	E	215	6:02	29	Alabama	5
81	Robustelli, Andy	E	230	6:01	30	Arnold	8
84	Svare, Harland	LB	215	6:00	27	Washington State	6
85	Schnelker, Bob	E	215	6:04	28	Bowling Green	6
88	Summerall, Pat	E	235	6:04	28	Arkansas	7
89	Livingston, Cliff	LB	215	6:03	28	UCLA	5

**CAMP NEAREST YOUR SEAT**

**Calvert** IS BETTER  
 RESERVE

IT'S THE WHISKEY  
 WITH THE MAN-SIZED FLAVOR!





Give  
Seagram's Gin  
in the  
Martini Master  
to all your  
friends...  
*including you!*

For the man who (as the Yuletide ads say) has EVERYTHING, we have invented a new Something.

It is the Martini Master (with easy-to-remove label). And notice how it glows invitingly with 94 proof Seagram's Golden Gin. Buy it yourself... or hint broadly. And don't forget your friends!

The rewards, obviously are *double*. Not only do you get the famous improved gin that revitalized the martini, but you can stir as you never stirred before: Stir in a handsome antiqued glass Martini Master with screw-on strainer top! Stir with the pride of re-creating the martini from scratch into *smooth*, from damp into *dry*, from prose into poetry!

The Martini Master, to the chagrin of our company treasurer, is available to you at no extra cost. As a result, however, it is emphatically in limited supply.

# Looking Over the Eagles



**NORM VAN BROCKLIN**

**D**ON'T be deceived by the Eagles' unimpressive won-lost record. Look at the scores of their games (page 32). They tell the truer story which, in a nutshell, is that this is a sharply improved Philadelphia team that has put up a real battle in just about every game.

This is strictly for your benefit. The Giants don't need any briefing on the Eagles. They found out, painfully, in Philadelphia on October 5, how much more formidable than last year the 1958 Eagles are. The Giants lost that game, 27-24, after carrying a 24-20 lead into the last quarter.

Two big factors in the rehabilitation of a team that had accomplished little in the three previous seasons were the appointment of Lawrence T. (Buck) Shaw as coach and the acquisition of Norm Van Brocklin from the Los Angeles Rams.

The silver-haired Shaw, a star tackle at Notre Dame under Knute Rockne, is one of football's most respected coaches. During his distinguished 34-year career, Buck served at North Carolina State, Nevada, Santa Clara, California and the Air Force Academy, in the college ranks.

He's also an old hand at pro football. He was the original coach

of the San Francisco Forty-Niners and made them a power to be feared in the defunct All-America Conference and the National League through 1954. Then he accepted the assignment of getting the Air Force Academy off the ground in football.

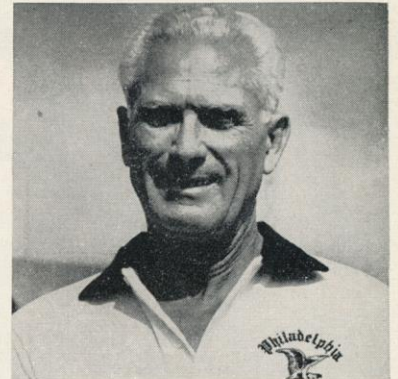
That mission accomplished, with outstanding success, Shaw was happy to return to pro football for another building job, with the Eagles.

It didn't take Buck long to discover that, more than anything else, the Eagles needed stronger wings. A chance to get Van Brocklin presented itself and Shaw grabbed him, for no National League passer has a stronger arm than the colorful Dutchman, a three-time winner of and perpetual contender for the league passing title.

With Van Brocklin at quarterback, the Eagles have one of the more potent attacks of the pro circuit. He's blessed with fine receivers in Bobby Walston and Maryland's Dick Bielski, at the ends, and Pete Retzlaff and Tommy McDonald in the flanking half-back position.



**BOB PELLEGRINI**



**BUCK SHAW**

Bill Barnes and Clarence Peaks, two of the league's best rookie backs in 1957, are good pass-catchers, too, and, unlike last year, when they pretty much had to go it alone, they have strong running support. Billy Wells, who was with Pittsburgh last year and Washington before that, and Walt Kowalczyk, a 1957 All-America at Michigan State, have stepped up the voltage of Philadelphia's ground game considerably.

One of pro football's noblest old pros heads a crisp-blocking offensive line that gives these speedy backs a chance to show their stuff. That's Chuck Bednarik, who, after years of devastating play as a linebacker, is revelling in the new role of offensive center.

The once-mighty Philadelphia defense has developed some chinks that Shaw has not yet had a chance to fill satisfactorily. As the record shows, the Eagles can be scored on.

However, no one is going to trample on such rugged operatives as Tom (Great) Scott and Jesse Richardson, who date back to the era when getting the Eagles to yield a touchdown was like pulling teeth. Bob Pellegrini, a more recent recruit, is cut from the same stripe.

Make no mistake about it, this is a good Philadelphia team!

**PLEASE USE ENTRANCE RAMP NEAREST YOUR SEAT**

# Touchdown!



KING-SIZE  
**FILTER**

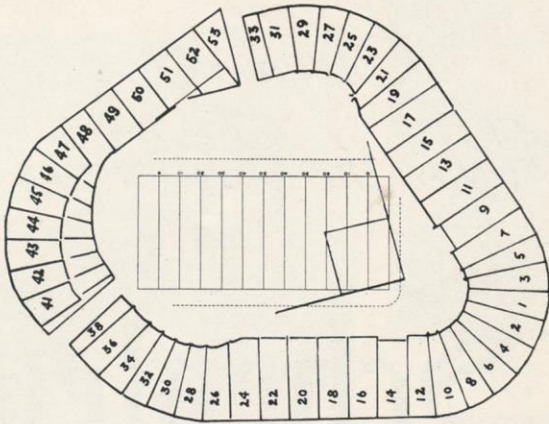
# KOOL

the cigarette with the  
**SNOW FRESH FILTER**

Blocked by hot cigarettes? Get into the clear—try a pack of refreshing Filter KOOL!

KOOLS taste *clean* and *fresh* and *light* . . . the *Snow Fresh* Filter makes the menthol *right*! So put yourself on the winning team . . . the KOOL team! For a cleaner, fresher taste all through the day . . . switch from "hots" to KOOLS!

# Yankee Stadium Services & Facilities



**LOST AND FOUND**—Direct inquiries and reports to James K. Thomson, the Stadium Manager. Any attendant will direct you to his office.

**REST ROOMS**—**Men:** Gate 2, Press Gate, Stadium Club (lower, upper), Gate 6; Lower Sections 34, 8, 6, 15, 21, 27; Mezzanine Sections 27, 15, 5, 18, 28; Upper Sections 34, 20, 6, 15, 21; Bleacher Sections 43, 47, 52. **Women:** Gate 2, Gate 4, Stadium Club (lower, upper), Gate 6; Lower Sections 28, 20, 5, 15, 27; Mezzanine Sections 21, 15, 6, 18, 34; Upper Sections 28, 20, 5, 15, 29; Bleacher Sections 47, 52.

**PUBLIC TELEPHONES**—Gate 2, Gate 4, Press Gate, Stadium Club (lower, upper), Gate 6, Lower Sections 24, 14, 12, 11, 17, 27; Mezzanine Sections 27, 17, 7, 8, 22; South side 157th St., Ruppert Pl. to Cromwell Ave. Upper Sections 34, 20, 12, 8, 9, 19, 27; Bleacher Sections 41, 49, 51.

## PARKING AREAS

### YANKEE LOTS

South side 157th St., Ruppert Pl. to Cromwell Ave. Between Cromwell and River Aves., on 153rd St. 163rd to 164th Sts., between River and Gerard Aves. 151st St. and River Ave., opposite Bronx County jail.

### PRIVATELY-OWNED LOTS

West side Ruppert Pl., between 157th and 158th Sts. West side River Ave., between 151st and 153rd Sts. West side River Ave. and 157th St. East side River Ave., North of 153rd St. East side River Ave., North of 151st St. East side River Ave., 164th to 165th Sts. East side River Ave., South of 162nd St. Farmer's Square—Cromwell Ave. Roadway, and West of 151st St. Viaduct, opposite Bronx County Jail.

### GARAGES

Cromwell Ave. and 157th St. East side of River Ave., South side of 158th St. East side of River Ave., North side of 157th St. East side of River Ave., South side of 157th St. North side of 158th St., between River and Gerard Aves. Also, the Polo Grounds lot again will be in service for all Giant games at the Stadium.

## SOUVENIR PRICE LIST

Roster Badge (All Teams).....	.25	Giants Bracelet.....	1.40
Picture Set (12 Players).....	.35	Player Doll (small).....	.75
Pennant (All Teams).....	.50	Doll (large).....	1.50
Giants Pen and Pencil Set.....	.75	Stadium Cap (ear laps).....	2.00
Giants Player Trophy.....	1.00	Football (small).....	1.50
Plastic Cushion.....	1.00	Football (large).....	3.00

Souvenir Stands located at Gates 2, 4, 6; Lower Sections 2, 18; Mezzanine Sections 20, 23; Upper Sections 18, 21; Bleacher Sections 43, 50.

These items also are available by mail from Harry M. Stevens, Inc., Souvenir Dept., Yankee Stadium, Bronx 51, N. Y.

# PARK & TILFORD



When you measure  
whiskey value—it's  
a good rule to buy  
**REPUTATION**



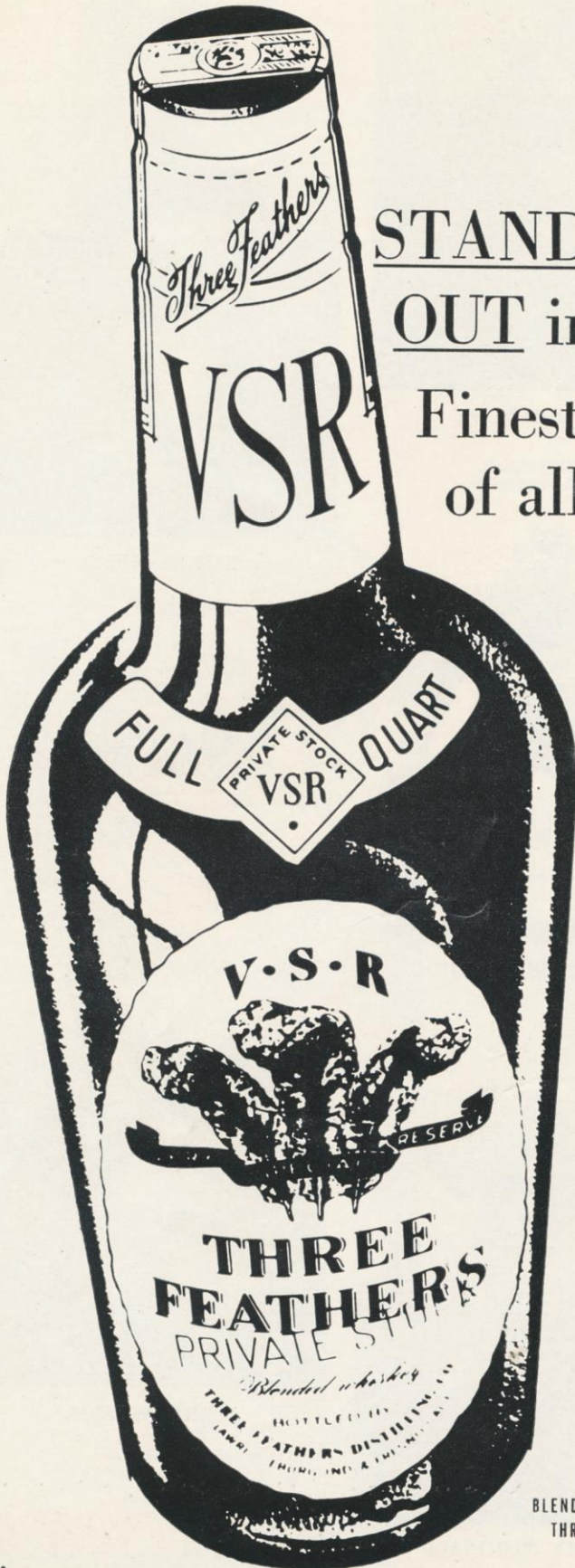
A reputation is hard to build, easy to destroy. Because we value ours, we market only the finest whiskey your money can buy.

**\$4.33**  
4/5 QUART

**\$5.34**  
QUART

**\$2.72**  
PINT

BLENDING WHISKEY. 65% GRAIN NEUTRAL SPIRITS. 86 PROOF. PARK & TILFORD, N. Y.



STANDS

OUT in any crowd!

Finest whiskey  
of all the blends!

# THREE FEATHERS

VSR PRIVATE STOCK

### GIANT LEADERS

Rushing	.....Triplet: 91-394 yds.
Passing	.....Conerly: 75 of 147
Receiving	.....Gifford: 24-392 yds.
Scoring	.....Gifford: 48 pts.
Punting	.....Chandler: 44.4 avg.
Punt Returns	.....Maynard: 15-63 yds.
Kick-Off Returns	.....Maynard: 8-210 yds.
Interceptions	.....Patton: 8-111 yds.

**QUARTS REDUCED!**  
**SAVE 91¢**  
 NOW **\$4.99**  
*Greatest whiskey buy  
 in New York  
 and New Jersey!*

BLENDING WHISKEY • 86 PROOF • 65% GRAIN NEUTRAL SPIRITS  
 THREE FEATHERS DISTILLING CO., LAWRENCEBURG, INDIANA

# Giants vs. Eagles

## SERIES RECORD

	W.	L.	T.	Pts.	Opp. Pts.
Giants	31	17	1	909	724
Eagles	17	31	1	724	909

The Giants have met the Philadelphia Eagles more frequently over the years than any other National Football League rival. This will be the fiftieth game between the teams, which have met twice each year since 1933 (except in the war year of 1943).

While the series record shows the Giants far in front, the won-lost-tied tally tells only part of the story of the heated rivalry between these old foes.

More significant of the lively give-and-take that has marked the series is the average score of the forty-nine preceding games. That works out to 18.2 points to 14.5 points, in favor of the Giants, a difference of only 3.7 points per game.

The series has run in cycles. From 1933 through 1942, as the NFL's dominant Eastern power, the Giants won 17 games and lost only three. From 1944 through 1949, when Greasy Neale beat the rest of the league to the punch in the general post-war rebuilding effort, the Eagles won nine and tied one of 12 games with the Giants.

From 1950 through 1957, a period which saw the Giants rise from the bottom to the top of the pro heap, the New Yorkers won 12 of 16.

Philadelphia, now showing signs of moving upward after a long period of innocuous desuetude, as the pundits say, drew first blood this year. Let's see what happens today.

## GIANTS vs. ALL OPPONENTS

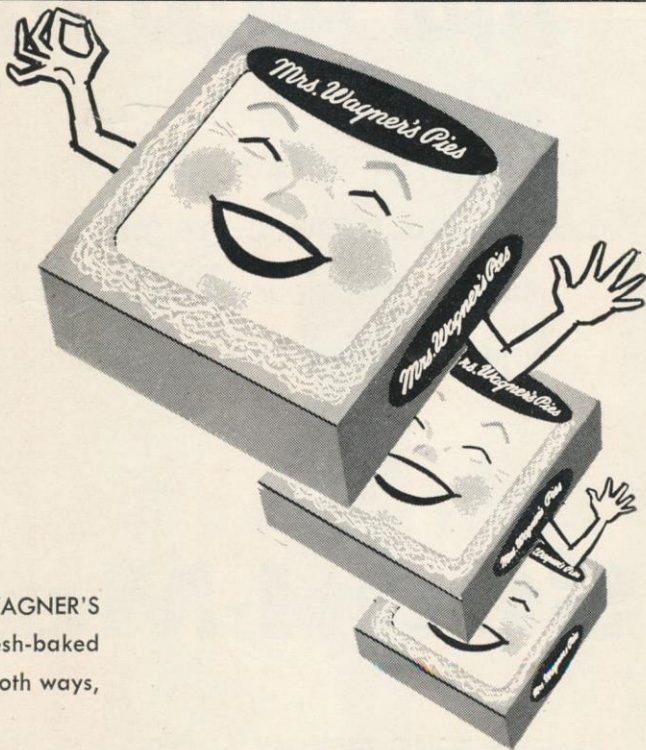
Opponent	W.	L.	T.	Pts.	Opp. Pts.
Baltimore	2	1	0	55	48
Chicago Bears	13	20	2	404	547
Chicago Cards	26	8	0	785	537
Cleveland Browns	6	11	1	257	346
Detroit Lions	4	8	1	158	268
Green Bay Packers	14	14	2	405	393
Los Angeles Rams	0	5	0	91	155
Philadelphia Eagles	31	17	1	909	724
Pittsburgh Steelers	26	18	2	832	642
San Francisco 49ers	2	1	0	78	62
Washington Redskins	28	16	1	893	727

## The complete series record:

1933—Giants 56, Phila. 0	1946—Phila. 24, Giants 14
Giants 20, Phila. 14	Giants 45, Phila. 17
1934—Giants 17, Phila. 0	1947—Phila. 23, Giants 0
Phila. 6, Giants 0	Phila. 41, Giants 24
1935—Giants 10, Phila. 0	1948—Phila. 45, Giants 0
Giants 21, Phila. 14	Phila. 35, Giants 14
1936—Phila. 10, Giants 7	1949—Phila. 24, Giants 3
Giants 21, Phila. 7	Phila. 17, Giants 3
1937—Giants 16, Phila. 7	1950—Giants 7, Phila. 3
Giants 21, Phila. 0	Giants 9, Phila. 7
1938—Phila. 14, Giants 10	1951—Giants 26, Phila. 24
Giants 17, Phila. 7	Giants 23, Phila. 7
1939—Giants 13, Phila. 3	1952—Giants 31, Phila. 7
Giants 27, Phila. 10	Phila. 14, Giants 10
1940—Giants 20, Phila. 14	1953—Phila. 30, Giants 7
Giants 17, Phila. 7	Giants 37, Phila. 28
1941—Giants 24, Phila. 0	1954—Giants 27, Phila. 14
Giants 16, Phila. 0	Phila. 29, Giants 14
1942—Giants 35, Phila. 17	1955—Giants 27, Giants 17
Giants 14, Phila. 0	Giants 31, Phila. 7
1944—Phila. 24, Giants 17	1956—Giants 20, Phila. 3
Phila. 21, Giants 21	Giants 21, Phila. 7
1945—Phila. 38, Giants 17	1957—Giants 24, Phila. 20
Giants 28, Phila. 21	Giants 13, Phila. 0
	1958—Phila. 27, Giants 24

# Enjoy 'em at the Game and at Home

Here at Yankee Stadium, reach for MRS. WAGNER'S delicious individual pies. At home, enjoy the fresh-baked goodness of MRS. WAGNER'S family-size pies. Both ways, you're in for real enjoyment.



## Why bake when you can buy

*Mrs. Wagner's Pies*





# "THESE FRANKFURTS ARE HICKORY SMOKED!"

Enjoy 'em at home, the circus, the football field, *everywhere!*  
Take your choice—regular or all-beef franks—both are *all  
meat!* Both deliciously hickory-smoked! Available in jars  
and cellophane, too. By famous . . .

## Stahl-Meyer



FAMOUS FERRIS HICKORY SMOKED CANNED HAM AND FERRIS BACON ARE TWO  
MORE FINE PRODUCTS MANUFACTURED AND KITCHEN TESTED BY STAHL-MEYER INC.

# NATIONAL LEAGUE OFFICIALS' SIGNALS



Offside



Crawling, Pushing, Helping Runner



Illegal Motion



Illegal Pass



Unsportsmanlike Conduct



Pass Interference



Holding, Illegal Use of Hands



Personal Foul (indication of offense follows)



Delay of Game, Excess Time-Out



Touchdown, Field Goal, Extra Point



Safety



Loss of Down



Penalty Declined, Incomplete Pass, Missed Goal



First Down



Dead Ball



No Time-Out or Time In with Whistle



Time-Out



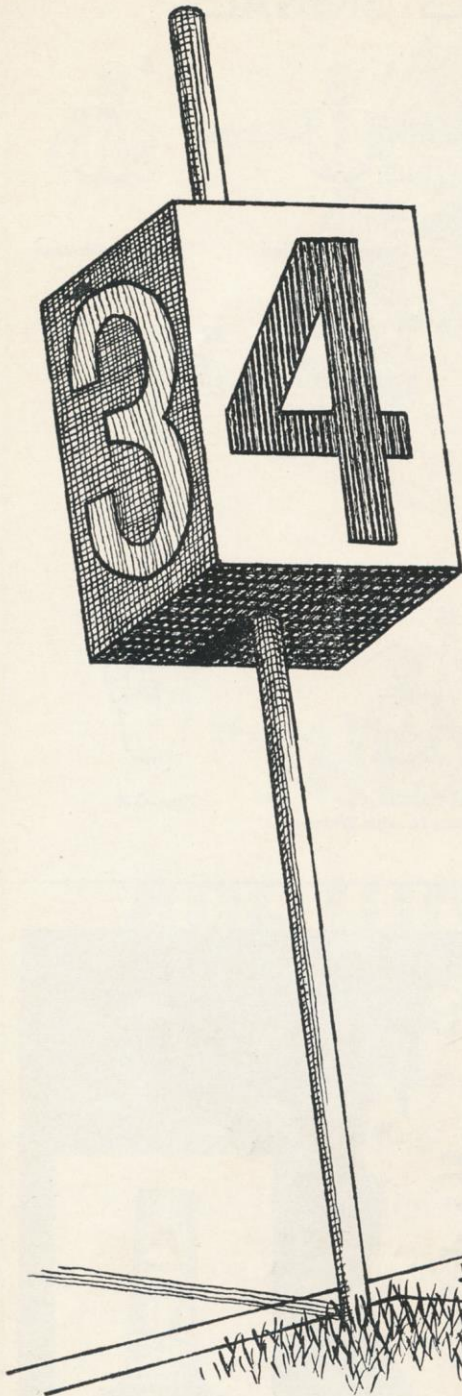
BY APPOINTMENT  
TO THOSE  
WHO THOUGHTFULLY  
JUDGE WHISKEY  
BY EXPERIENCE

# MELROSE

## THE VINTAGE WHISKEY



Vintage Blended Whiskey, 90 Proof, 60% Grain Neutral Spirits. Melrose Distillers Co., N. Y.



Before they call  
that 4th down kick  
Stand up, brother . . .

*Sing out for Knick*



# Knickerbocker

NEW YORK'S FAMOUS BEER

Jacob Ruppert, N. Y. C.

# Giant Blackboard: Swing Pass

THE average fan thinks of the pass as a "go for broke" type of play. Often it is. On the other hand, particularly in pro football, where passing skills have been developed to a high degree, the pass is an integral part of ball-control. It also frequently is used to discourage defensive overloading that wrecks havoc with normal play patterns.

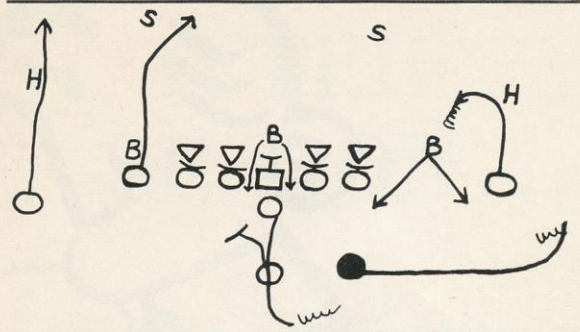
As an example of what might be termed a remedial pass, today's blackboard session with Vin Lombardi, the Giant offensive coach, deals with a play that has worked well for the Giants over the years. Since this is his "day," we have designated Alex Webster as the prime receiver.

The play is simple enough. Charley Conerly or Don Heinrich, whichever is at quarterback, drops straight back on taking the snap. After faking to Mel Triplett or Phil King, whichever is at fullback, the Giant quarterback quickly flips the ball to Webster, who has swung out into the right flat.

The flanked Giant left halfback and the tight left end go straight downfield and the flanked right end button-hooks in front of the defensive left halfback about ten yards beyond the line of scrimmage to complete the pattern.

More subtle than it appears, this swing pass is designed particularly to cope with a pinching, jamming defense featuring obstreperous darts into the Giant backfield by the line-backers.

If the line-backers crash, the Giant quarterback has a clear shot at Webster without having to worry



too much about an interception, which is always a matter of concern on a flat pass. Alex, in turn, has a chance to make some real yardage, because the defensive left halfback, occupied covering the flanked Giant right end, can't come up immediately.

In a reverse situation, when the Giant quarterback finds the left side line-backer sliding out into the flat to protect that passing zone, the ball can be thrown to the button-hooking end, who, being in front of the defensive left halfback and safety with no defender between him and the passer, should be free for at least a short gain.

Passes of this type don't often produce long-yardage touchdown plays. They do play an important part in ball-control. How? First, by keeping the Giants moving forward. Second, by making the line-backers think twice about being too venturesome.



Bob Cousy

NBA DOUBLEHEADER  
TUESDAY NIGHT

**KNICKS vs**  
**BOSTON CELTICS**

with Bob Cousy, Bill Sharman and Bill Russell

**CINCINNATI vs ST. LOUIS**

1st Game 7 PM

TICKETS NOW AT BOX OFFICE  
\$1.50, \$2.00, \$2.50, \$3.00, \$4.50 tax incl.

Home and Away Games on Radio WINS—1010 on your Dial

Brought to You by Budweiser

**MADISON SQ. GARDEN**



"There's no substitute  
for that  
**TIP-TOP**  
feeling"

Tip-Top Bread and Cakes...just a teeny bit better!

"Tip-Top" Reg. U. S. Pat. Off., Ward Baking Company

*Above all...it's light!*



Please be patient if you don't find Long John the first try! Shipments of this wonderfully light whisky are barely trickling over from Scotland.

86 PROOF • BLENDED SCOTCH WHISKY • DREYFUS, ASHBY CO., INC. • SOLE U. S. IMPORTERS, N. Y.

## NFL Statistical Leaders For Past Fifteen Years

### BALL CARRYING

	Yards Gained	Atts.
1957—James Brown, Cleveland .....	942	202
1956—Rick Casares, Chicago Bears .....	1,126	234
1955—Alan Ameche, Baltimore .....	961	213
1954—Joseph Perry, San Francisco .....	1,049	173
1953—Joseph Perry, San Francisco .....	1,018	192
1952—Dan Towler, Los Angeles .....	894	156
1951—ED PRICE, NEW YORK .....	971	*271
1950—Marion Motley, Cleveland .....	810	140
1949—Steve Van Buren, Philadelphia .....	*1,146	263
1948—Steve Van Buren, Philadelphia .....	945	201
1947—Steve Van Buren, Philadelphia .....	1,008	217
1946—William Dudley, Pittsburgh .....	604	146
1945—Steve Van Buren, Philadelphia .....	832	143
1944—BILL PASCHAL, NEW YORK .....	737	196
1943—BILL PASCHAL, NEW YORK .....	572	147

### FORWARD PASSING

	Passes	Comp.	Yds.	Tds.
1957—Tom O'Connell, Cleve. ....	110	63	1,229	9
1956—Ed Brown, Chi. Bears .....	168	96	1,667	11
1955—Otto Graham, Cleve. ....	185	98	1,721	15
1954—Norm Van Brocklin, L. A. ....	260	139	2,637	13
1953—Otto Graham, Cleve. ....	258	167	2,722	11
1952—Norm Van Brocklin, L. A. ....	205	113	1,736	14
1951—Bob Waterfield, L. A. ....	176	88	1,566	13
1950—Norm Van Brocklin, L. A. ....	233	127	2,061	18
1949—Sam Baugh, Washington .....	255	145	1,903	18
1948—Tommy Thompson, Phila. ....	246	141	1,965	25
1947—Sam Baugh, Washington .....	*354	*210	*2,938	25
1946—Bob Waterfield, L. A. ....	251	127	1,747	18
1945—Sam Baugh, Washington .....	182	128	1,669	11
1944—Frank Filchock, Wash. ....	147	84	1,139	13
1943—Sam Baugh, Washington .....	239	133	1,754	23

### PASS RECEIVING

	Caught	Yards	Tds.
1957—Billy Wilson, San Francisco .....	52	757	6
1956—Billy Wilson, San Francisco .....	60	889	5
1955—Pete Pihos, Philadelphia .....	62	864	7
1954—Pete Pihos, Philadelphia .....	60	872	10
Billy Wilson, San Francisco .....	60	830	5
1953—Pete Pihos, Philadelphia .....	63	1,049	10
1952—Mac Speedie, Cleveland .....	62	911	5
1951—Elroy Hirsch, Los Angeles .....	66	*1,495	*17
1950—Tom Fears, Los Angeles .....	*84	1,116	7
1949—Tom Fears, Los Angeles .....	77	1,013	9
1948—Tom Fears, Los Angeles .....	51	698	4
1947—Jim Keane, Chicago Bears .....	64	910	10
1946—Jim Benton, Los Angeles .....	63	981	6
1945—Don Hutson, Green Bay .....	47	834	9
1944—Don Hutson, Green Bay .....	58	866	9
1943—Don Hutson, Green Bay .....	47	776	11

### SCORING

	TDs	PAT	FG	Pts.
1957—Sam Baker, Washington .....	1	29	14	77
Lou Groza, Cleveland .....	0	32	15	77
1956—Bobby Layne, Detroit .....	5	33	12	99
1955—Doak Walker, Detroit .....	7	27	9	96
1954—Robert Walston, Philadelphia .....	11	36	4	114
1953—Gordon Soltau, San Francisco .....	6	48	10	114
1952—Gordon Soltau, San Francisco .....	7	34	6	94
1951—Elroy Hirsch, Los Angeles .....	17	0	0	102
1950—Doak Walker, Detroit .....	11	38	8	128
1949—Pat Harder, Chicago Cards .....	8	45	3	102
GENE ROBERTS, N. Y. ....	17	0	0	102
1948—Pat Harder, Chicago Cards .....	6	53	7	110
1947—Pat Harder, Chicago Cards .....	7	39	7	102
1946—Ted Fritsch, Green Bay .....	10	13	9	100
1945—Steve Van Buren, Phila. ....	*18	2	0	110
1944—Don Hutson, Green Bay .....	9	31	0	85
1943—Don Hutson, Green Bay .....	12	36	3	117

\*League record.

# SEASON AFTER SEASON...



"Ahh...  
So Pure!"

## She's New York's Best Girl!

# White Rock

for sparkling fine beverages

The White Rock Girl stays so popular because the brand she represents satisfies so completely! Thanks to superior carbonation, a White Rock drink keeps sparkling from the first pour to the last sip. So for a lighter, livelier drink every time, don't just mix it... *White Rock it!*



# This Week's N. F. L. Pairings

<b>Home Team</b>		<b>Visiting Team</b>		<b>Home Team</b>		<b>Visiting Team</b>	
<b>NEW YORK</b>		<b>PHILADELPHIA</b>		<b>CLEVELAND</b>		<b>WASHINGTON</b>	
Won 6, Lost 3		Won 2, Lost 6, Tied 1		Won 7, Lost 2		Won 3, Lost 6	
37—Cards at Buffalo .....	7	14—Washington .....	24	30—Los Angeles (a) .....	27	24—Philadelphia (a) .....	14
24—Philadelphia (a) .....	27	27—New York .....	24	45—Pittsburgh (a) .....	12	10—Chicago Cards (a) .....	37
21—Washington (a) .....	14	3—Pittsburgh (a) .....	24	35—Chicago Cards .....	28	14—New York .....	21
6—Chicago Cards .....	23	24—San Francisco .....	30	27—Pittsburgh .....	10	37—Green Bay .....	21
17—Pittsburgh .....	6	35—Green Bay (a) .....	38	38—Chicago Cards (a) .....	24	10—Baltimore (a) .....	35
21—Cleveland (a) .....	17	21—Chicago Cards (a) .....	21	17—New York .....	21	16—Pittsburgh (a) .....	24
24—Baltimore .....	21	24—Pittsburgh .....	31	10—Detroit .....	30	45—Chicago Cards .....	31
10—Pittsburgh (a) .....	31	49—Chicago Cards .....	21	20—Washington (a) .....	10	10—Cleveland .....	20
30—Washington .....	0	14—Cleveland (a) .....	28	28—Philadelphia .....	14	0—New York (a) .....	30
—Philadelphia .....	—	—New York (a) .....	—	—Washington .....	—	—Cleveland (a) .....	—
—Detroit (a) .....	—	—Cleveland .....	—	—Philadelphia (a) .....	—	—Pittsburgh .....	—
—Cleveland .....	—	—Washington (a) .....	—	—New York (a) .....	—	—Philadelphia .....	—
<hr/>	<hr/>	<hr/>	<hr/>	<hr/>	<hr/>	<hr/>	<hr/>
190	146	211	241	250	176	166	233

<b>PITTSBURGH</b>		<b>vs. CHICAGO BEARS</b>	
Won 5, Lost 4		Won 6, Lost 3	
20—San Francisco (a) .....	23	34—Green Bay (a) .....	20
12—Cleveland .....	45	38—Baltimore (a) .....	51
24—Philadelphia .....	3	28—San Francisco .....	6
10—Cleveland (a) .....	27	31—Los Angeles .....	10
6—New York (a) .....	17	27—San Francisco (a) .....	14
24—Washington .....	16	35—Los Angeles (a) .....	41
31—Philadelphia (a) .....	24	24—Green Bay .....	10
31—New York .....	10	0—Baltimore .....	17
27—Chicago Cards (a) .....	20	20—Detroit (a) .....	7
—Chicago Bears .....	—	—Pittsburgh (a) .....	—
—Washington (a) .....	—	—Chicago Cards .....	—
—Chicago Cards .....	—	—Detroit .....	—
<hr/>	<hr/>	<hr/>	<hr/>
185	185	237	176

<b>BALTIMORE</b>		<b>vs. SAN FRANCISCO</b>	
Won 8, Lost 1		Won 4, Lost 5	
28—Detroit .....	15	23—Pittsburgh .....	20
51—Chicago Bears .....	38	3—Los Angeles .....	33
24—Green Bay at Milw. .....	17	6—Chicago Bears (a) .....	28
40—Detroit (a) .....	14	30—Philadelphia (a) .....	24
35—Washington .....	10	14—Chicago Bears .....	27
56—Green Bay .....	0	24—Detroit .....	21
21—New York (a) .....	24	7—Los Angeles (a) .....	56
17—Chicago Bears (a) .....	0	21—Detroit (a) .....	35
34—Los Angeles .....	7	33—Green Bay at Milw. .....	12
—San Francisco .....	—	—Baltimore (a) .....	—
—Los Angeles (a) .....	—	—Green Bay .....	—
—San Francisco (a) .....	—	—Baltimore .....	—
<hr/>	<hr/>	<hr/>	<hr/>
306	125	161	256

<b>CHICAGO CARDS</b>		<b>vs. LOS ANGELES</b>	
Won 2, Lost 6, Tied 1		Won 5, Lost 4	
7—New York at Buff. ....	37	27—Cleveland .....	30
37—Washington .....	10	33—San Francisco (a) .....	3
28—Cleveland (a) .....	35	42—Detroit (a) .....	28
23—New York (a) .....	6	10—Chicago Bears (a) .....	31
24—Cleveland .....	38	24—Detroit .....	41
21—Philadelphia .....	21	41—Chicago Bears .....	35
31—Washington (a) .....	45	56—San Francisco .....	7
21—Philadelphia (a) .....	49	20—Green Bay (a) .....	7
20—Pittsburgh .....	27	7—Baltimore (a) .....	34
—Los Angeles .....	—	—Chicago Cards (a) .....	—
—Chicago Bears (a) .....	—	—Baltimore .....	—
—Pittsburgh (a) .....	—	—Green Bay .....	—
<hr/>	<hr/>	<hr/>	<hr/>
212	268	260	216

<b>DETROIT</b>		<b>vs. GREEN BAY</b>	
Won 3, Lost 5, Tied 1		Won 1, Lost 7, Tied 1	
15—Baltimore (a) .....	28	20—Chicago Bears .....	34
13—Green Bay (a) .....	13	13—Detroit .....	13
28—Los Angeles .....	42	17—Baltimore at Milw. ....	24
14—Baltimore .....	40	21—Washington (a) .....	37
41—Los Angeles (a) .....	24	38—Philadelphia .....	35
21—San Francisco (a) .....	24	0—Baltimore (a) .....	56
30—Cleveland (a) .....	10	10—Chicago Bears (a) .....	24
35—San Francisco .....	21	7—Los Angeles .....	20
7—Chicago Bears .....	20	12—San Fran. at Milw. ....	33
—Green Bay .....	—	—Detroit (a) .....	—
—New York .....	—	—San Francisco (a) .....	—
—Chicago Bears (a) .....	—	—Los Angeles (a) .....	—
<hr/>	<hr/>	<hr/>	<hr/>
204	222	138	276

## NATIONAL LEAGUE LEADERS

<b>RUSHING</b>	
1. Brown, Cleveland .....	199 for 1,229 yds.
2. Ameche, Baltimore .....	129 for 607 yds.
3. Perry, San Francisco .....	101 for 567 yds.
<b>PASSING</b>	
1. LeBaron, Washington .....	59 of 110 for 992 yds.
2. Wade, Los Angeles .....	140 of 262 for 2214 yds.
3. Unitas, Baltimore .....	85 of 167 for 1407 yds.
<b>RECEIVING</b>	
1. Retzlaff, Philadelphia .....	43 for 600 yds.
2. Shofner, Los Angeles .....	40 for 824 yds.
3. Berry, Baltimore .....	39 for 602 yds.
<b>SCORING</b>	
1. Brown, Cleveland .....	102 pts.
2. Moore, Baltimore .....	72 pts.
3. Galimore, Bears .....	66 pts.

## NATIONAL LEAGUE STANDINGS

<b>EASTERN CONFERENCE</b>				
				<i>Points</i>
	<i>W.</i>	<i>L.</i>	<i>T.</i>	<i>For Agst.</i>
Cleveland .....	7	2	0	.778 250 176
NEW YORK .....	6	3	0	.667 190 146
Pittsburgh .....	5	4	0	.556 185 185
Washington .....	3	6	0	.333 166 233
Chicago Cards .....	2	6	1	.250 212 268
Philadelphia .....	2	6	1	.250 211 241
<b>WESTERN CONFERENCE</b>				
Baltimore .....	8	1	0	.889 306 125
Chicago Bears .....	6	3	0	.667 237 176
Los Angeles .....	5	4	0	.556 260 216
San Francisco .....	4	5	0	.444 161 256
Detroit .....	3	5	1	.375 204 222
Green Bay .....	1	7	1	.125 138 276

PLEASE USE ENTRANCE RAMP NEAREST YOUR SEAT

ONCE  
IN A  
BLUE  
MOON



Rare is the whiskey of such character and savor that it unfailingly offers complete and perfect pleasure. And if this triumph won't quite change the stars in their courses or shade a gold moon blue, at least it can win more advocates than any other whiskey in the world's history.

It can . . . and *did*. Its name is 7 Crown.

Say **Seagram's** and be **Sure**  
OF THE FIRST AND FINEST AMERICAN WHISKEY





# Best to give - best to get!

The advertisement features three cigarette cartons arranged diagonally on a red background. The top carton is L&M, with a white background and gold and red accents. It features the text "Happy Holiday" in cursive, the L&M logo, and two holly wreaths with red bows. The middle carton is Chesterfield, with a white background and green and blue accents. It features the text "YOUR CHRISTMAS" in large letters, a green Christmas tree, and the word "CHESTERFIELD" in large blue letters. A small white card with "TO" and "FROM" fields is attached to the front. The bottom carton is Oasis, with a teal and white background. It features a circular illustration of Santa Claus holding a sign that says "Merry Christmas" with "To" and "From" fields. The text "OASIS" is written in large white letters, and "FILTER CIGARETTES WITH Menthol Mist" is written in smaller text. A small white card with "Give Cartons for Christmas\*" is placed in the bottom right corner.

Happy Holiday  
L&M  
CIGARETTES

YOUR CHRISTMAS  
TO  
FROM  
CHESTERFIELD  
CHESTERFIELD

Merry Christmas  
To  
From  
OASIS  
FILTER CIGARETTES WITH Menthol Mist  
Give Cartons for Christmas\*